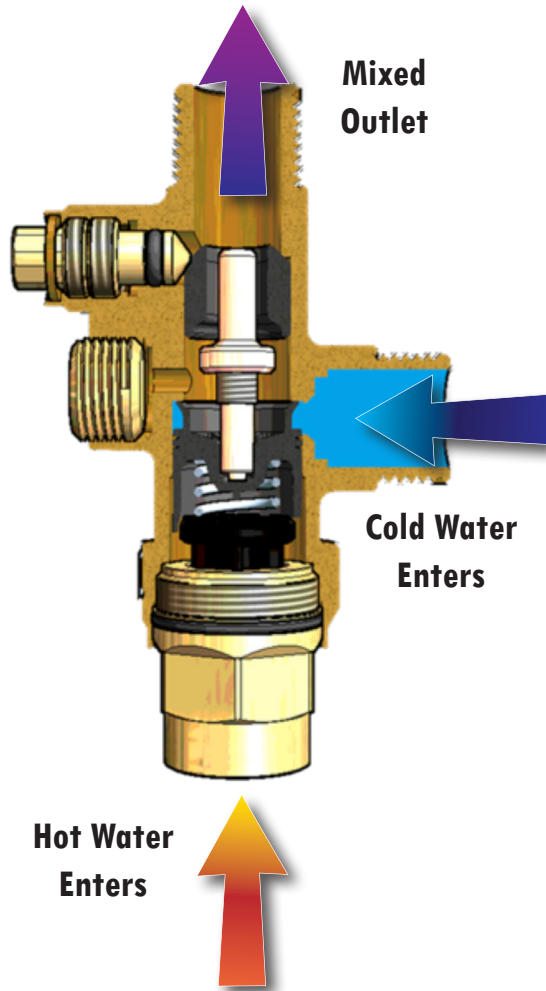


How do Mixing Valves work?



The Tank Booster uses the latest thermostatic wax technology to regulate hot and cold water inlet supplies to produce outlet water at a safe, stable, regulated temperature. During the valves operation, the wax responds to the temperature of the water entering the valve, expanding and contracting with increasing and decreasing inlet temperature. This movement of the wax drives motion of the piston allowing more hot or cold water to enter the valve as needed to maintain the set outlet temperature. Once water reaches a safe 120°F temperature, it is distributed throughout the house and supplied to fixtures.



Heatguard® Thermostatics

Cash Acme offers a wide range of mixing valves for both residential and commercial applications.

For more information visit: www.cashacme.com.

For more information on Cash Acme's Tank Booster please visit: www.tankbooster.com.



Cash Acme and SharkBite are divisions of
Reliance Worldwide Corporation.



Reliance Worldwide USA
2727 Paces Ferry Road SE
Building Two, Suite 1800
Atlanta, GA 30339
1-877-700-4280



HEATGUARD® TANK BOOSTER™

Boost. Protect. Save.

Get More Hot Water

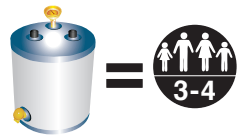


Boost.

Increase the Capacity of Your Water Heater.



Get more hot water by using Heatguard's Tank Booster by Cash Acme. This innovative valve was designed with safety and convenience in mind. Easily installed, Tank Booster combines hot and cold water before distributing safe tempered water to your fixtures. By raising the temperature of your water heater, Tank Booster draws less water out of your tank while still providing 120°F water throughout the home. This gives your tank the "boost" it needs.



Typical Water Heater will provide hot water for a family of 3-4



Typical Water Heater with a Tank Booster will provide hot water for a family of 6+

Protect.

Help Prevent Bacteria Growth and Scalding.

Protect your family and increase the safety of your home's hot water system. By increasing the temperature on your water heater to 140°F, you greatly reduce the chance of growing Legionella or other bacteria within your tank. In addition, Tank Booster greatly reduces the risk of scalding by safely tempering hot water before it is delivered to your fixtures.



Protection Against Legionella and Scalding

Legionella Bacteria
STORE ABOVE 140°F

Disinfection: >160°F

Legionella die in <2 minutes 160°F

Legionella die in 32 minutes 140°F

Legionella die in 5-6 hours 130°F

120°F

Ideal growth range:

95°F – 115°F

Legionella growth range:

70°F – 120°F

70°F

Legionella survive but dormant:

<70°F

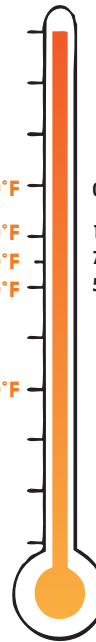
Scalding
DELIVER BELOW 120°F
Third Degree Burns

0.5 secs children, 1 secs adults

1 secs children, 5 secs adults

7 secs children, 30 secs adults

5 mins children and adults



Save.

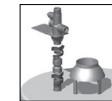
Conserve Resources and Reduce Install Time.

- Save on installation time by using SharkBite water heater connectors and SharkBite ball valves.
- Use less water out of your tank to supply the same amount of hot water throughout your home.

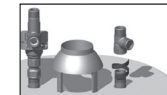
Connection Kit



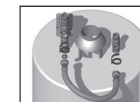
Installation



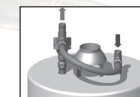
1. Shut off the incoming cold water supply and open the hot water at a fixture in your house until it drains completely.



2. Thread the Tank Booster on to the hot nipple and the tee on to the cold nipple. Connect the two with the flex hose.



3. Connect the valve and tee back to the hard piping that runs through the house using SharkBite water heater connectors.



4. Turn water supply back on and enjoy more hot water.