



**ROD  
ENDS**

# 2-Piece Carbon Steel Rod Ends

Metal to Metal - Right & Left Hand Threads - Male & Female

**C O M M E R C I A L**

## Specifications

### BALL

- 52100 Bearing Steel
- Heat Treated
- Hard Chrome Plated
- Precision Ground

### BODY

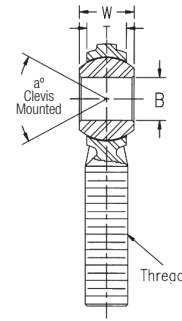
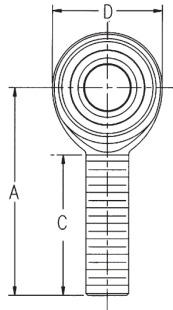
- Carbon Steel
- Protective Coated for Corrosion Resistance

## Male

### ITEM NUMBER

### DIMENSIONS IN INCHES

Right Hand	Left Hand	B + .0025 - .0005	W ± .005	T Ref.	A ± .015	D Ref.	Ball Dia. Ref.	C + .062 - .031	Thread UNF-3A	Misalign. Angle a°	Ult. Radial Static Load Lbs.	Approx. Brg. Wgt. Lbs.
20F975	20F976	0.1900	0.312	0.234	1.250	0.625	0.437	0.750	10-32	20	1,558	0.03
20F977	20F978	0.2500	0.375	0.250	1.562	0.750	0.500	1.000	1/4-28	27	2,835	0.04
20F979	20F980	0.3125	0.437	0.312	1.875	0.875	0.625	1.250	5/16-24	22	4,517	0.07
20F981	20F982	0.3750	0.500	0.359	1.938	1.000	0.719	1.250	3/8-24	22	6,323	0.11
20F983	20F984	0.4375	0.562	0.406	2.125	1.125	0.812	1.375	7/16-20	21	7,897	0.15
20F985	20F986	0.5000	0.625	0.453	2.438	1.312	.0937	1.500	1/2-20	20	10,046	0.24
20F987	20F988	0.6250	0.750	0.484	2.625	1.500	1.125	1.625	5/8-18	26	11,385	0.36
20F989	20F990	0.7500	0.875	0.593	2.875	1.750	1.312	1.750	3/4-16	24	15,894	0.57

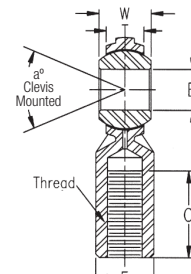
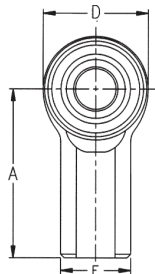


### ITEM NUMBER

### DIMENSIONS IN INCHES

## Female

Right Hand	Left Hand	B + .0025 - .0005	W ± .005	T Ref.	A ± .015	D Ref.	E ± .010	F ± .010	Ball Dia. Ref.	C + .062 - .031	Thread UNF-2B	Misalign. Angle a°	Ult. Radial Static Load Lbs.	Approx. Brg. Wgt. Lbs.
20F959	20F960	0.1900	0.312	0.234	1.062	0.625	0.406	0.312	0.437	0.500	10-32	20	2,079	0.04
20F961	20F962	0.2500	0.375	0.250	1.312	0.750	0.469	0.375	0.500	0.687	1/4-28	27	3,820	0.05
20F963	20F964	0.3125	0.437	0.312	1.375	0.875	0.500	0.437	0.625	0.687	5/16-24	22	5,110	0.08
20F965	20F966	0.3750	0.500	0.359	1.625	1.000	0.687	0.562	0.719	0.812	3/8-24	22	6,323	0.13
20F967	20F968	0.4375	0.562	0.406	1.812	1.125	0.750	0.625	0.812	0.937	7/16-20	21	7,897	0.18
20F969	20F970	0.5000	0.625	0.453	2.125	1.312	0.875	0.750	.0937	1.062	1/2-20	26	10,046	0.29
20F971	20F972	0.6250	0.750	0.484	2.500	1.500	1.000	0.875	1.125	1.375	5/8-18	26	11,385	0.43
20F973	20F974	0.7500	0.875	0.593	2.875	1.750	1.125	1.000	1.312	1.562	3/4-16	24	15,894	0.65





**ROD  
ENDS**

# 2-Piece Carbon Steel Rod Ends with Stud Configuration

Metal to Metal - Right & Left Hand Threads - Male & Female

## Specifications

### BALL

- 52100 Bearing Steel
- Heat Treated
- Hard Chrome Plated
- Precision Ground

### BODY

- Carbon Steel
- Protective Coated for Corrosion Resistance

### STUD

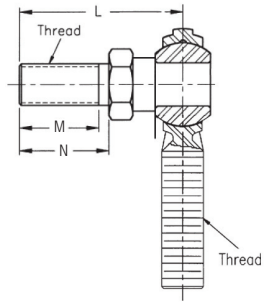
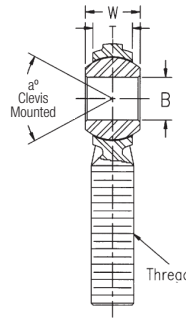
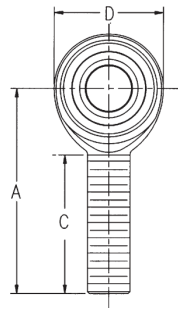
- Carbon Steel
- Protective Coated for Corrosion Resistance

### ITEM NUMBER

### DIMENSIONS IN INCHES

## Male with Stud

Right Hand	Left Hand	B + .0025 - .0005	W ± .005	T Ref.	A ± .015	D Ref.	Ball Dia. Ref.	C + .062 - .031	Thread UNF-3A	Misalign. Angle a°	Approx. Brg. Wgt. Lbs.	L Ref.	N ±.010	M Ref.
20G008	20G009	0.1900	0.312	0.234	1.250	0.625	0.437	0.750	10-32	20	0.04	1.000	0.500	0.437
20G010	20G011	0.2500	0.375	0.250	1.562	0.750	0.500	1.000	1/4-28	27	0.06	1.031	0.562	0.500
20G012	20G013	0.3125	0.437	0.312	1.875	0.875	0.625	1.250	5/16-24	22	0.11	1.219	0.687	0.593
20G014	20G015	0.3750	0.500	0.359	1.938	1.000	0.719	1.250	3/8-24	22	0.16	1.562	0.906	0.812
20G016	20G017	0.4375	0.562	0.406	2.125	1.125	0.812	1.375	7/16-20	21	0.20	1.750	1.062	0.937
20G018	20G019	0.5000	0.625	0.453	2.438	1.312	.0937	1.500	1/2-20	20	0.36	2.000	1.125	1.000
20G020	20G021	0.6250	0.750	0.484	2.625	1.500	1.125	1.625	5/8-18	26	0.59	2.500	1.500	1.375
20G022	20G023	0.7500	0.875	0.593	2.875	1.750	1.312	1.750	3/4-16	24	1.02	3.000	1.812	1.625

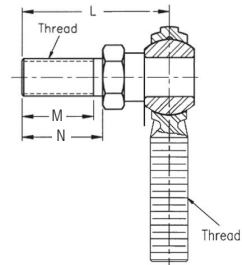
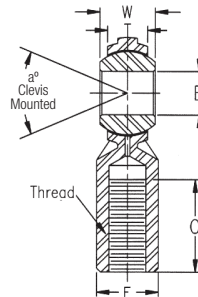
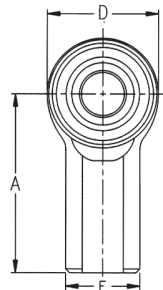


### ITEM NUMBER

### DIMENSIONS IN INCHES

## Female with Stud

Right Hand	Left Hand	B + .0025 - .0005	W ± .005	T Ref.	A ± .015	D Ref.	E ± .010	F ± .010	Ball Dia. Ref.	C + .062 - .031	Thread UNF-2B	Misalign. Angle a°	Approx. Brg. Wgt. Lbs.	L Ref.	N ±.010	M Ref.
20F991	20F992	0.1900	0.312	0.234	1.062	0.625	0.406	0.312	0.437	0.500	10-32	20	0.05	1.000	0.500	0.437
20F993	20F994	0.2500	0.375	0.250	1.312	0.750	0.469	0.375	0.500	0.687	1/4-28	27	0.08	1.031	0.562	0.500
20F995	20F996	0.3125	0.437	0.312	1.375	0.875	0.500	0.437	0.625	0.687	5/16-24	22	0.11	1.219	0.687	0.593
20F997	20F998	0.3750	0.500	0.359	1.625	1.000	0.687	0.562	0.719	0.812	3/8-24	22	0.12	1.562	0.906	0.812
20F999	20G001	0.4375	0.562	0.406	1.812	1.125	0.750	0.625	0.812	0.937	7/16-20	21	0.21	1.750	1.062	0.937
20G002	20G003	0.5000	0.625	0.453	2.125	1.312	0.875	0.750	.0937	1.062	1/2-20	26	0.44	2.000	1.125	1.000
20G004	20G005	0.6250	0.750	0.484	2.500	1.500	1.000	0.875	1.125	1.375	5/8-18	26	0.67	2.500	1.500	1.375
20G006	20G007	0.7500	0.875	0.593	2.875	1.750	1.125	1.000	1.312	1.562	3/4-16	24	1.09	3.000	1.812	1.625



AVAILABLE THROUGH

**GRAINGER**

FOR THE ONES WHO GET IT DONE