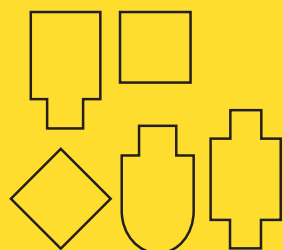


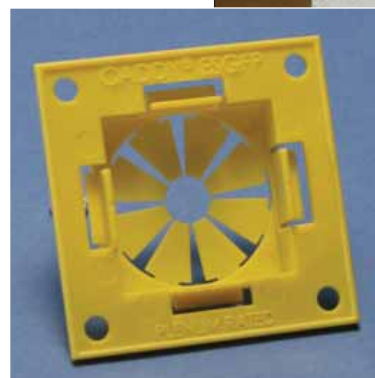
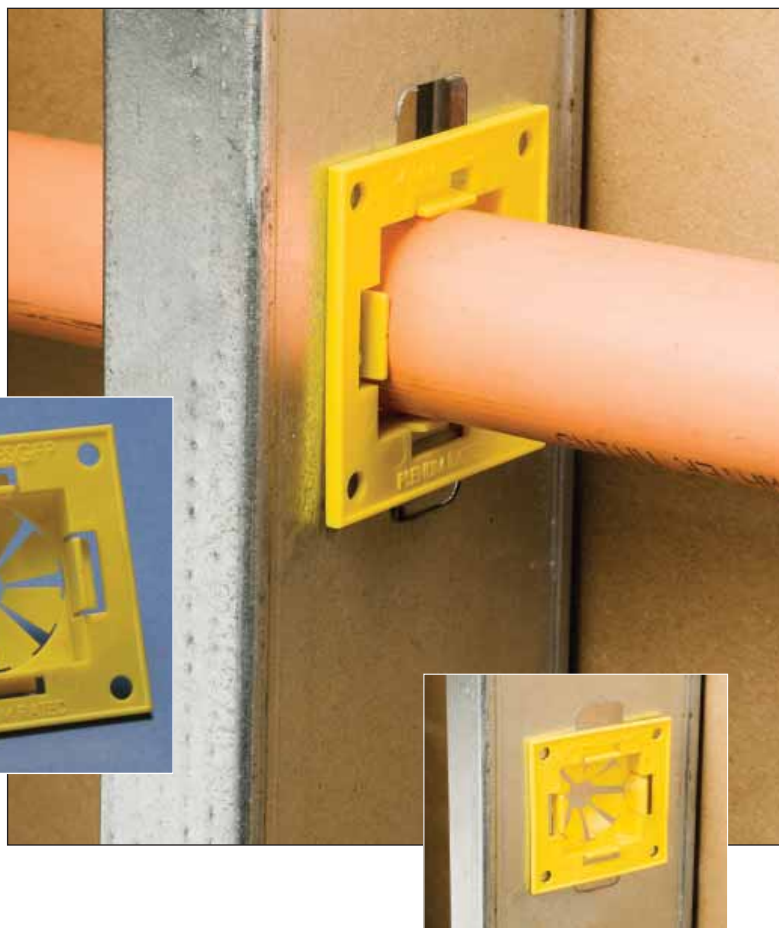
Easy Snap Grommet for Fire Protection (ESGFP)

Features

- Easy installation for pre-existing, factory-punched holes
- Provides 360° protection for plumbing, fire sprinkler piping/tubing and electrical cabling
- Helps protect CPVC pipe, conduit and copper tubing from sharp edges
- Only one grommet required per factory-punched hole
- Fits larger 1" pipe and conduit sizes
- Provides uniform support
- Plenum-rated per UL® 2043

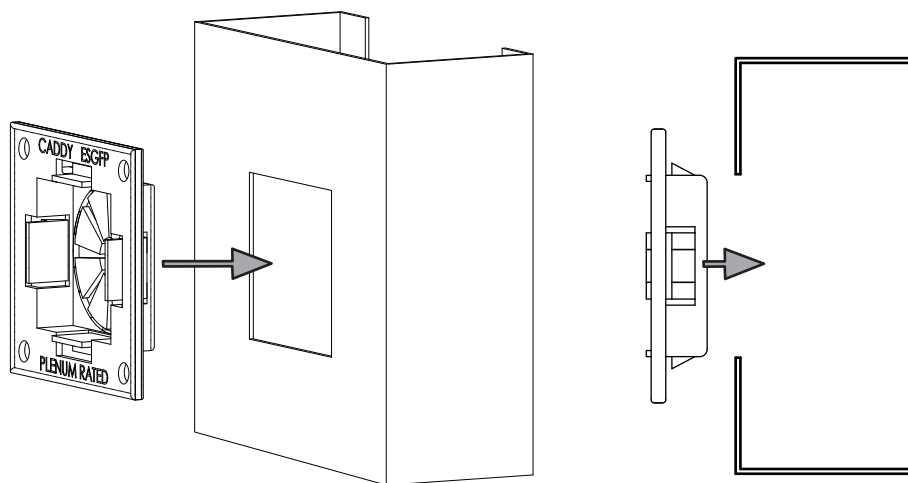


The ESGFP fits 1" CPVC pipe, copper tubing and conduit.



Easy Installation Options

To install 1/2" – 1" piping, tubing and conduit through a factory- or field-punched hole, snap one ESGFP into place. The holes provide the option to add screws.



Easy Snap Grommet and Metal Stud Punch

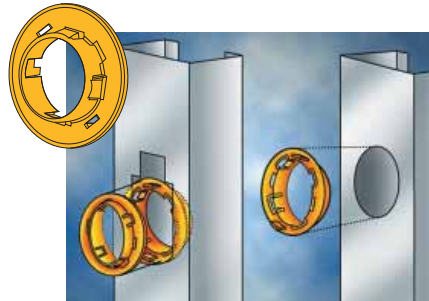
Also Available:

ESG1 and ESGP Features

- Snap one grommet into standard field-punched hole or snap two together into any shape factory-punched hole
- Provides 360° protection for pipe or cable



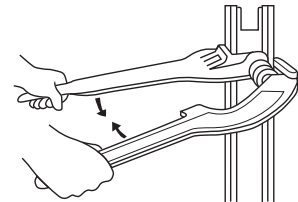
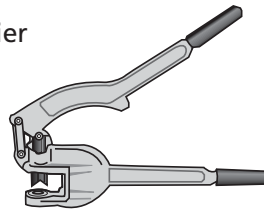
ESG1
The ESG1 grommet is NEC[®] 300-4 compliant



ESGP
The ESGP grommet provides anti-rattle protection

MSP20 Features

- Easily punches holes in metal stud
- Cushioned handles mean less operator fatigue and more comfortable handling
- Innovative tool design has offset handles to allow punch to work in confined locations or near perpendicular walls
- Lightweight punch makes accurate locations of holes easier
- Hardened steel components keep tool sharper longer
- Punches up to 20 gauge sheet metal
- Replacement cutter available



Ordering Information

Catalog No.	Description	Box Qty.
ESGP	Anti-Rattle Grommet	100
ESGPM	Anti-Rattle Grommet	1,000
ESG1	Easy Snap Grommet	100
ESG1M	Easy Snap Grommet	1,000
ESGFP	Easy Snap Square Grommet	100
MSP20	Metal Stud Punch	1
CRP	Replacement Cutter	1

WARNING

ERICO products shall be installed and used only as indicated in ERICO's product instruction sheets and training materials. Instruction sheets are available at www.erico.com and from your ERICO customer service representative. Improper installation, misuse, misapplication or other failure to completely follow ERICO's instructions and warnings may cause product malfunction, property damage, serious bodily injury and death.

Copyright ©2008 ERICO International Corporation. All rights reserved.
CADDY, CADWELD, CRITEC, ERICO, ERIFLEX, ERITECH, and LENTON are registered trademarks of ERICO International Corporation.