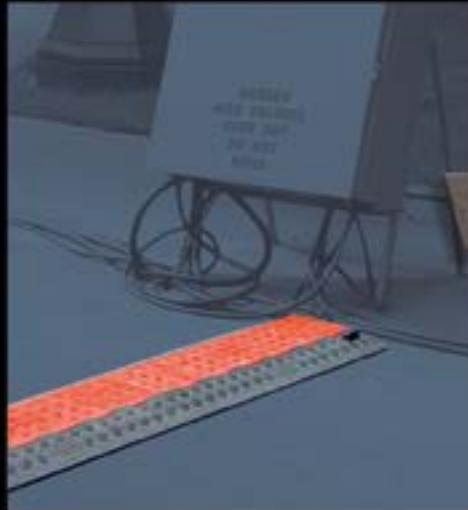
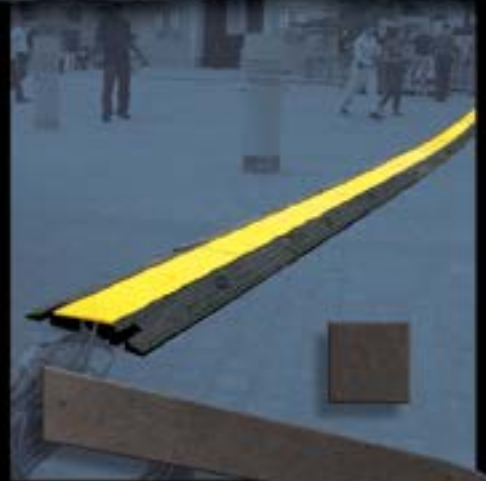


CHECKERS®

INDUSTRIAL SAFETY PRODUCTS



WE ARE

safety

Cable Protector Catalog

Dedicated to saving lives and protecting assets



INDUSTRIAL STRENGTH WARNING WHIPS

featuring models for every application

THE BEST WHIPS AVAILABLE

Checkers continually works with safety managers and industry experts to design warning whip products and accessories that provide the highest level of visibility and reliability in any weather or working condition.

GORILLA® INDUSTRIAL STRENGTH WARNING WHIPS are constructed with a premium fiberglass resin to ensure the highest performance in any condition. Available in 3, 5, 6, 8, 10 or 12 foot lengths, these whips include a threaded hex base for vehicle attachment and either a heavy duty Day Bright™ fluorescent orange, green, or yellow flag to help identify vehicles, equipment, or important locations at work sites.

We offer a variety of base mounts, including Threaded Hex Base, Quick Disconnect Base and Lock Pin Base (only available on the telescoping pole). You have your choice of lighted or non-lighted whips, with various lighting and mounting options available as accessories. GORILLA® INDUSTRIAL STRENGTH WARNING WHIPS are engineered to handle the harshest conditions at mines, construction sites, and other industrial applications.

LIGHTED WARNING WHIPS

HEAVY DUTY WHIPS

- Includes 18" pigtail, heavy duty Day Bright™ fluorescent nylon mesh flag with 3M® Scotchlite® reflective X, choice of lighting option, threaded hex base, and heavy duty spring mounting base
- High-quality power cable runs continuously from lamp through hex base
- Various flag color and lighting options
- Highly durable and resistant whips

ALL PURPOSE WHIPS

- Includes two conductor waterproof hot plug with 12" pigtail, heavy duty Day Bright™ fluorescent nylon mesh flag with or without 3M® Scotchlite® reflective X, Rocket™ II Super Bright Waterproof LED light, and stainless steel threaded hex base
- New waterproof LED light socket replaces old 1156 bulb and lamp socket
- The strongest whip in the industry

GENERAL PURPOSE WHIPS

- Includes single conductor hot plug with 12" pigtail, heavy duty Day Bright™ fluorescent nylon mesh flag with or without 3M® Scotchlite® reflective X, fiberglass whip, lamp socket, and threaded hex base mount
- Heavy duty wiring reduces shorts caused by extreme temperatures
- Various flag color and lighting options
- Various models - including quick disconnect base and telescoping poles

NON-LIGHTED WARNING WHIPS

GENERAL PURPOSE WHIPS

- Includes heavy duty Day Bright™ fluorescent nylon mesh flag with or without 3M® Scotchlite® reflective X, fiberglass whip, and threaded hex base
- Various flag colors available
- Various models - including quick disconnect base and telescoping poles

LIGHT DUTY WHIPS

- Includes orange nylon-mesh flag, and 7-foot non-lighted fiberglass whip with threaded hex base mount
- Various whip colors available

CHOOSING THE RIGHT MODEL

LIGHTED



* Lighted Warning Whips: Lighting options and mounting accessories sold separately. Lighting option included with Heavy Duty Whips.

LIGHTING OPTIONS*

Various colors and styles of lighting are available. Choose the combination that fits your application.
* Sold separately, except for Heavy Duty Whips

FLAG STYLE

When selecting your warning whip, be sure to specify your desired flag size, color, and whether you would like a 3M® Scotchlite® reflective X on your flag.

WHIP LENGTH

Whip lengths vary. Choose the correct whip length to fit the requirements necessary for your application.

WHIP BASE

Various Warning Whip base options and mounting accessories are available. Select the correct warning whip base depending upon your specific need.

NON-LIGHTED



* Non-Lighted Warning Whips: Mounting accessories sold separately

ADVANTAGES OF USING GORILLA WARNING WHIPS BY CHECKERS

- Checkers continually works with safety managers and industry experts to develop warning whips that provide the highest level of reliability
- We manufacture the most popular warning whips in the highly-demanding mining industry
- Gorilla warning whips are assembled at company headquarters in Broomfield, Colorado
- Lighted and non-lighted whips available with a wide selection of lighting and mounting options
- Extensive product and accessory assortment allows for customization to meet your precise needs
- Manufactured with a premium fiberglass resin creating the strongest whip in the industry
- Premium fiberglass resin is coated with a 3-5 year finish preventing fiberbloom or expose fiberglass slivers
- Includes heavy duty Day Bright™ fluorescent nylon mesh flag with 3M® Scotchlite® reflective X (available in orange, green and yellow)



GORILLA WARNING WHIP REFERENCE GUIDE

LIGHTED WHIPS



TYPE OF WHIP	HEAVY DUTY WHIP	ALL PURPOSE WATERPROOF WHIP	TRADITIONAL HEX BASE	TELESCOPING POLE	QUICK DISCONNECT BASE	SPLIT POLE W/ QUICK DISCONNECT BASE
LENGTHS AVAILABLE (FT)	12', 10', 8', 6', 5', 3'	12', 10', 8', 6', 5', 3'	12', 10', 8', 6', 5', 3'	21', 15', 13', 10', 8'	12', 10', 8', 6', 5', 3'	12', 10', 8'
PAGE NUMBER	Page 68	Page 70	Page 74	Page 74	Page 75	Page 75

NON-LIGHTED WHIPS



TYPE OF WHIP	TRADITIONAL HEX BASE	TELESCOPING POLE	QUICK DISCONNECT BASE	SPLIT POLE W/ QUICK DISCONNECT BASE	LIGHT DUTY WHIP W/ TRADITIONAL HEX BASE
LENGTHS AVAILABLE (FT)	12', 10', 8', 6', 5', 3'	21', 15', 13', 10', 8'	12', 10', 8', 6', 5', 3'	12', 10', 8'	7'
PAGE NUMBER	Page 76	Page 76	Page 77	Page 77	Page 78



HEAVY DUTY LIGHTED WHIPS

featuring sealed lamp socket, and hex base

FEATURES

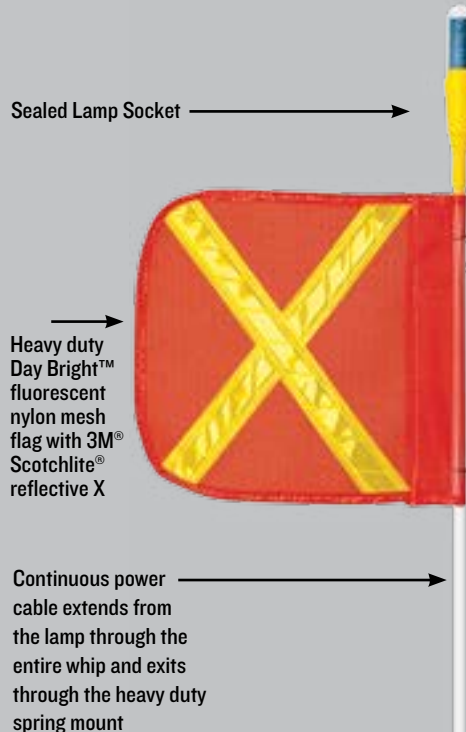
- 3, 5, 6, 8, 10 or 12 foot lengths available
- Sealed connections prevent corrosion & deterioration
- Interchangeable light options
- Premium fiberglass resin backed by a 5-year guarantee not to fiberbloom or expose fiberglass slivers
- -75° C/-103° F temperature rating of power cable

GORILLA® HEAVY DUTY LIGHTED WHIPS are constructed from a premium fiberglass resin (available in 3, 5, 6, 8, 10 or 12 foot lengths) and includes a heavy duty Day Bright™ fluorescent nylon mesh flag with 3M® Scotchlite® reflective X in orange, green, yellow, and threaded ultra heavy duty spring mount for vehicle attachment. Various interchangeable lights are available as options. Delivered fully assembled and ready for installation.

To prevent deterioration, a weather-resistant, polyolefin heat-shrink tubing is used to seal the interchangeable lamp socket to prevent moisture, chemicals, and debris from contacting electrical connectors. The hex base is also sealed to provide additional protection.

For improved durability, GORILLA® HEAVY DUTY LIGHTED WHIPS feature a high quality, continuous power cable that extends from the lamp through the hex base and heavy duty spring mount. This eliminates pinched wires, multiple solder joints, and hot plug power connections - all of which can cause failure due to corrosion. The custom designed power cable is molded into the whip and consists of 2 conductor, 20 AWG, 19 x 32 strand, triple-coated thermoplastic elastomer (TPE) insulation and features a cold temperature rating of -75° C/-103° F.

GORILLA® HEAVY DUTY LIGHTED WHIPS have a 5-year guarantee against fiberglass deterioration known as fiberbloom or exposed fiberglass slivers.



For accessories and replacement parts, see pages 80-85



Comes standard with Ultra Heavy Duty Spring Mount

BUILD YOUR OWN HEAVY DUTY LIGHTED WHIP

To build your own GORILLA® HEAVY DUTY LIGHTED WHIP, create a custom part number by selecting one code from each column below and transfer that code to the black lines below the arrows.

A: WHIP LENGTH	B: WHIP COLOR	C: WIRING OPTIONS	D: MOUNTING BASE	E: FLAG SIZE	F: FLAG COLOR	G: REFLEXITE X	H: LIGHTING OPTIONS
3	WT	1	UH	S1	OR	N	4
5							5
6				6			
8				7			
10				8			
12				9			
				S2	GN	Y	10
					YL	W	11
							12
							13
							14
							15
							16
							17
							18
							19

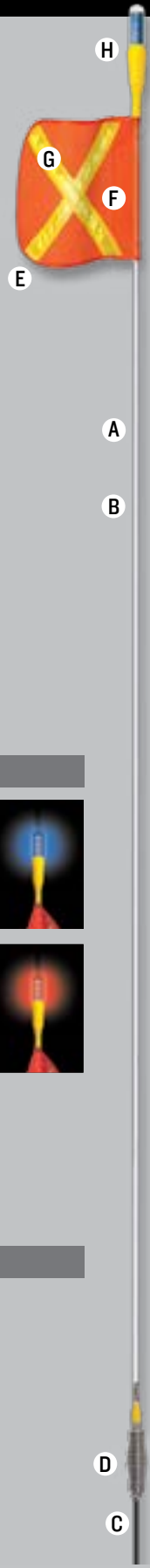
PART
NUMBER

G

WT

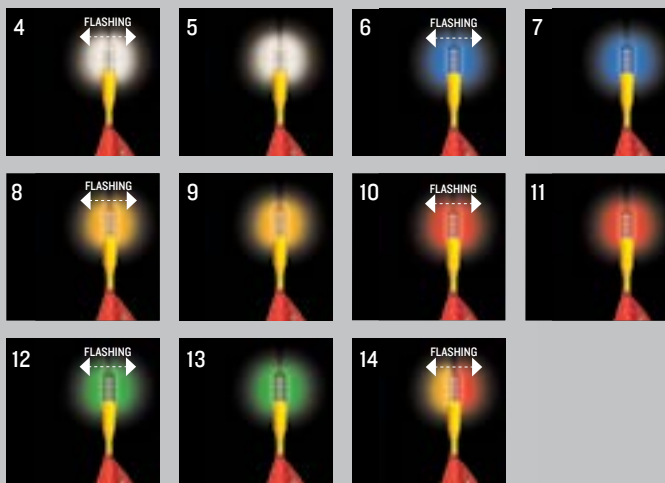
1

UH

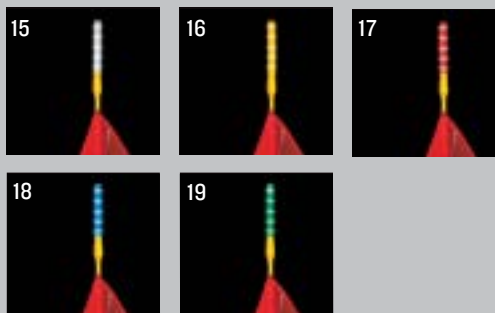


A: WHIP LENGTH	3', 5' 6', 8', 10', or 12' Whip
B: WHIP COLOR	WT = White
C: WIRING OPTIONS	1 = Lamp Socket with 18" Pigtail extending from Spring Mount
D: MOUNTING BASE	UH = Heavy Duty Spring Mount with Hex Base
E: FLAG SIZE	S1 = 12" x 11" S2 = 16" x 16"
F: FLAG COLOR	OR = Orange GN = Green YL = Yellow
G: REFLEXITE X	N = No X W = White Reflective X Y = Yellow Reflective X
H: LIGHTING OPTIONS	4 = White Flashing LED 5 = White LED 6 = Blue Flashing LED 7 = Blue LED 8 = Amber Flashing LED 9 = Amber LED 10 = Red Flashing LED 11 = Red LED 12 = Green Flashing LED 13 = Green LED 14 = Red and Amber Flashing LED 15 = White Glo-Worm 16 = Amber Glo-Worm 17 = Red Glo-Worm 18 = Blue Glo-Worm 19 = Green Glo-Worm

ROCKET™ SUPER BRIGHT LED LIGHTS



GLO-WORM™ LIGHTS





ALL PURPOSE WATERPROOF LIGHTED WHIPS

The new industry standard for weather resistance

FEATURES

- 3, 5, 6, 8, 10 or 12 foot lengths available
- Rocket™ II Super Bright Waterproof LED Lights are up to 10 times brighter than competing brands
- Multiple patent-pending features
- Most weather-resistant whip on the market
- -75° C/-103° F temperature rating of power cable

Checkers introduces the industry's best All Purpose Waterproof Lighted Warning Whips!

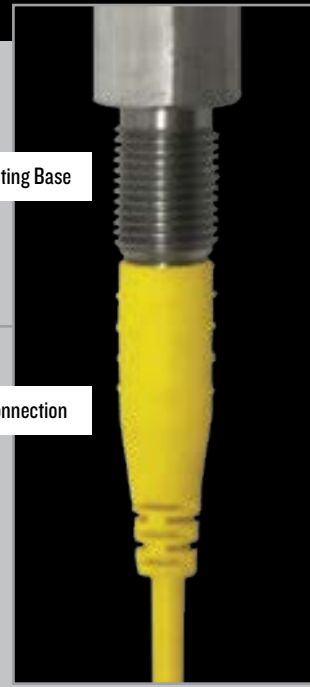


Checkers' new Gorilla® All Purpose Waterproof Warning Whip with stainless steel components sets the new standard for weather resistance in any working conditions. With multiple patent-pending features, these whips are ideal for extreme weather conditions such as coastal areas, corrosive environments, salt mines, and areas with high humidity.

- Includes a two conductor waterproof hot plug with 12" pigtail, heavy duty Day Bright™ fluorescent nylon mesh flag with or without 3M® Scotchlite® reflective X, New Rocket™ II Super Bright Waterproof LED light, and a stainless steel threaded hex base
- New patent-pending waterproof LED light socket replaces old 1156 bulb and lamp socket
- Rocket™ II Super Bright Waterproof LED comes standard with 9 changeable light modes, 7 flash patterns, and steady on or off, which provides a "one light fits all" solution
- Premium fiberglass resin creates the strongest whip in the industry
- Improved, patent-pending internal ground connection that helps eliminate power failures
- Patent-pending waterproof hot plug connection with two conductor 12" pigtail
- Internal wire is industrial grade and meets Military Spec MIL-W-16878
- Optional stainless steel, powered spring mount available



Features stainless steel



Stainless Steel Mounting Base

Waterproof Power Connection

For accessories and replacement parts, see pages 82-85

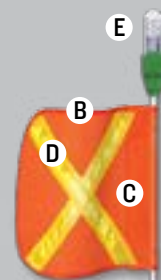
Ideal for extreme weather conditions such as coastal areas, corrosive environments, salt mines, and areas with high humidity.

BUILD YOUR OWN ALL PURPOSE LIGHTED WHIP

To build your own GORILLA® ALL PURPOSE LIGHTED WHIP, create a custom part number by selecting one code from each column below and transfer that code to the black lines below the arrows.

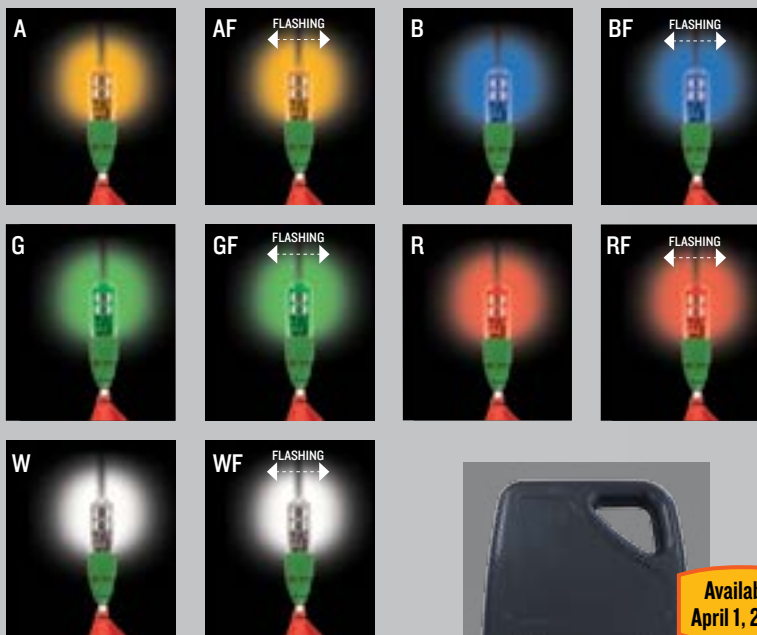
A: WHIP LENGTH	B: FLAG SIZE	C: FLAG COLOR	D: REFLEXITE X COLOR	E: LED LIGHT COLOR
3	16	O	W	A
5	12	G	Y	AF
6	↓	Y	↓	B
8		↓		B
10				GF
12				R
				RF
				W
				WF

PART NUMBER **AP**



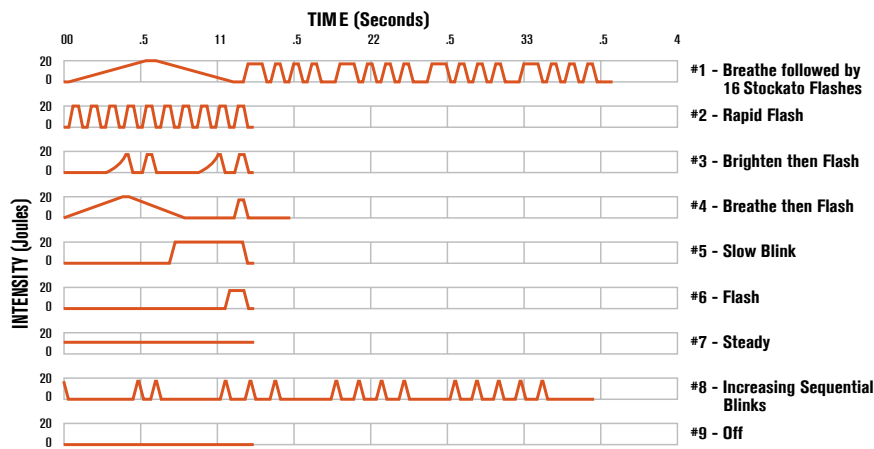
A: WHIP LENGTH	3', 5' 6', 8', 10', or 12' Whip
B: FLAG SIZE	16 = 16" x 16" 12 = 12" x 11"
C: FLAG COLOR	O = Orange G = Green Y = Yellow
D: REFLEXITE X COLOR	W = White Reflective X Y = Yellow Reflective X
E: LED LIGHT COLORS	A = Amber LED AF = Amber Flashing LED B = Blue LED BF = Blue Flashing LED G = Green LED GF = Green Flashing LED R = Red LED RF = Red Flashing LED W = White LED WF = White Flashing LED

ROCKET™ II SUPER BRIGHT LED WHIP LIGHTS



Available
April 1, 2014

FLASH PATTERNS FOR ROCKET™ II SUPER BRIGHT LED WHIP LIGHTS



Light patterns are easy to program with remote control (Part #FLREMOTE).



ALL PURPOSE WATERPROOF LIGHTED WARNING WHIPS

REPLACEMENT LIGHTS FOR EXISTING WHIPS WITH AN 1156 BASE USE ROCKET™ II SUPER BRIGHT LED LIGHTS ON ANY WHIP WITH AN 1156 BASE!

The NEW Rocket™ II Super Bright Waterproof LED Lights allow you to take advantage of the increased brightness and waterproof features without replacing your existing whips with 1156 technology. Rocket™ II LED lights fit an 1156 light base and come standard with 9 changeable light modes, 7 flash patterns, and steady on or off. These features reduce your inventory carrying costs by 50% by providing a “one light fits all” solution.

- New technology - up to 10 times brighter than competitors
- Ultra strong durable polycarbonate base eliminates power failures experienced with traditional 1156 lamp socket
- Amber, Blue, Green, Red and White
- Remote control is available and sold separately

FEATURES

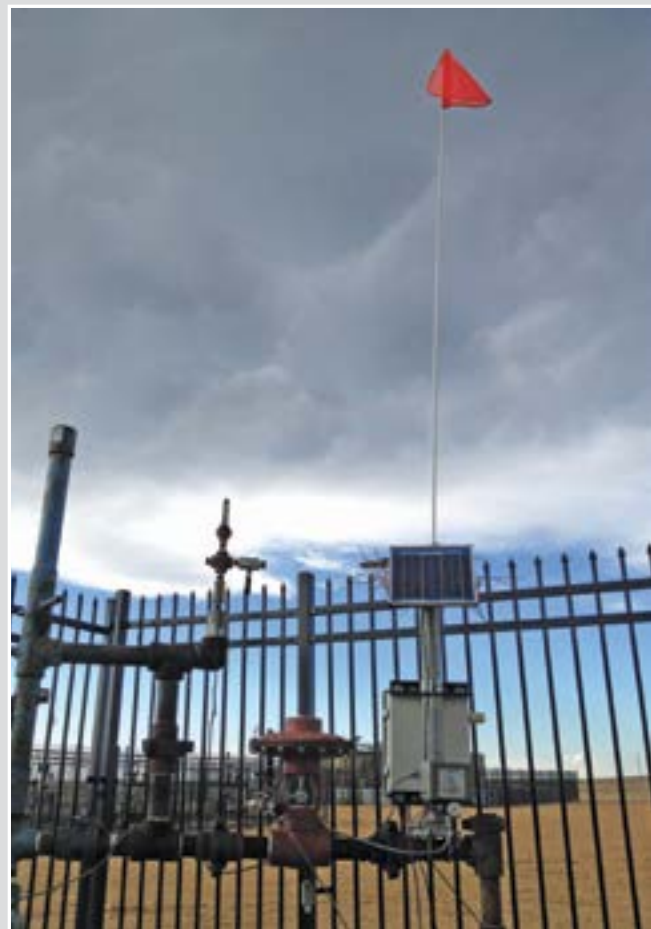
1. Replaceable LED Circuit
2. Replaceable Screw-On Clear Lens
3. O-Ring Waterproof Lens Seal



* ALL MODELS FOR ALL PURPOSE WHIP AVAILABLE THROUGH GRAINGER SOURCING

PART NUMBERS FOR STANDARD ALL PURPOSE LIGHTED WHIPS

MODEL	BASE TYPE	LIGHT	COLOR	FLASH	LEDS	VOLTS	AMPS	LUMENS
WLFS.6LED.W*	Stainless Steel Hex Base	Waterproof Adaptable Light	White	No	6	12-24	.25	750
WLFS.6LED.WF*	Stainless Steel Hex Base	Waterproof Adaptable Light	White	Yes	6	12-24	.25	750
WLFS.6LED.R*	Stainless Steel Hex Base	Waterproof Adaptable Light	Red	No	6	12-24	.25	750
WLFS.6LED.RF*	Stainless Steel Hex Base	Waterproof Adaptable Light	Red	Yes	6	12-24	.25	750
WLFS.6LED.A*	Stainless Steel Hex Base	Waterproof Adaptable Light	Amber	No	6	12-24	.25	750
WLFS.6LED.AF*	Stainless Steel Hex Base	Waterproof Adaptable Light	Amber	Yes	6	12-24	.25	750
WLFS.6LED.B*	Stainless Steel Hex Base	Waterproof Adaptable Light	Blue	No	6	12-24	.25	750
WLFS.6LED.BF*	Stainless Steel Hex Base	Waterproof Adaptable Light	Blue	Yes	6	12-24	.25	750
WLFS.6LED.G*	Stainless Steel Hex Base	Waterproof Adaptable Light	Green	No	6	12-24	.25	750
WLFS.6LED.GF*	Stainless Steel Hex Base	Waterproof Adaptable Light	Green	Yes	6	12-24	.25	750
WLFS.4LED.W*	Stainless Steel Hex Base	Waterproof Adaptable Light	White	No	4	12-24	.20	500
WLFS.4LED.WF*	Stainless Steel Hex Base	Waterproof Adaptable Light	White	Yes	4	12-24	.20	500
WLFS.4LED.R*	Stainless Steel Hex Base	Waterproof Adaptable Light	Red	No	4	12-24	.20	500
WLFS.4LED.RF*	Stainless Steel Hex Base	Waterproof Adaptable Light	Red	Yes	4	12-24	.20	500
WLFS.4LED.A*	Stainless Steel Hex Base	Waterproof Adaptable Light	Amber	No	4	12-24	.20	500
WLFS.4LED.AF*	Stainless Steel Hex Base	Waterproof Adaptable Light	Amber	Yes	4	12-24	.20	500
WLFS.4LED.B*	Stainless Steel Hex Base	Waterproof Adaptable Light	Blue	No	4	12-24	.20	500
WLFS.4LED.BF*	Stainless Steel Hex Base	Waterproof Adaptable Light	Blue	Yes	4	12-24	.20	500
WLFS.4LED.G*	Stainless Steel Hex Base	Waterproof Adaptable Light	Green	No	4	12-24	.20	500
WLFS.4LED.GF*	Stainless Steel Hex Base	Waterproof Adaptable Light	Green	Yes	4	12-24	.20	500
WLFS.2LED.W*	Stainless Steel Hex Base	Waterproof Adaptable Light	White	No	2	12-24	.20	250
WLFS.2LED.WF*	Stainless Steel Hex Base	Waterproof Adaptable Light	White	Yes	2	12-24	.20	250
WLFS.2LED.R*	Stainless Steel Hex Base	Waterproof Adaptable Light	Red	No	2	12-24	.20	250
WLFS.2LED.RF*	Stainless Steel Hex Base	Waterproof Adaptable Light	Red	Yes	2	12-24	.20	250
WLFS.2LED.A*	Stainless Steel Hex Base	Waterproof Adaptable Light	Amber	No	2	12-24	.20	250
WLFS.2LED.AF*	Stainless Steel Hex Base	Waterproof Adaptable Light	Amber	Yes	2	12-24	.20	250
WLFS.2LED.B*	Stainless Steel Hex Base	Waterproof Adaptable Light	Blue	No	2	12-24	.20	250
WLFS.2LED.BF*	Stainless Steel Hex Base	Waterproof Adaptable Light	Blue	Yes	2	12-24	.20	250
WLFS.2LED.G*	Stainless Steel Hex Base	Waterproof Adaptable Light	Green	No	2	12-24	.20	250
WLFS.2LED.GF*	Stainless Steel Hex Base	Waterproof Adaptable Light	Green	Yes	2	12-24	.20	250





Threaded Hex Base GENERAL PURPOSE LIGHTED WHIPS

FEATURES

- 3, 5, 6, 8, 10, or 12 foot lengths available
- Hot plug with 12" pigtail
- Wide variety of lighting options
- Orange, green or yellow heavy duty Day Bright™ fluorescent nylon mesh flag with or without X
- Whip constructed from premium fiberglass resin

GORILLA® GENERAL PURPOSE LIGHTED WARNING WHIPS WITH THREADED HEX BASE include a hot plug with 12" pigtail, heavy duty Day Bright™ fluorescent nylon mesh flag with or without 3M® Scotchlite® reflective X, premium fiberglass resin whip, and your choice of base mount. The heavy duty wiring in these whips helps to reduce shorts caused by extreme temperatures and conditions. Individual lights must be bought separately (see page 81 for lighting options). Threaded Hex Base Warning Whips are available in 3, 5, 6, 8, 10 or 12 foot lengths and your choice of an orange, green, or yellow flag.

MODEL NUMBERS FOR THREADED HEX BASE LIGHTED WHIPS

(includes Mounting Base, Lamp Socket, and Hot Plug with 12" pigtail)

*AVAILABLE THROUGH GRAINGER SOURCING

Type of Flag	12" x 11"	12" x 11" w/ X	16" x 16"	16" x 16" w/ X	Triangle	No Flag	
Pole Length	12 ft.	5UYL7	5UYL8	FS12L-16*	FS12XL-16*	FS12L-T*	FS12L-NF*
	10 ft.	5UYL3	5UYL4	FS10L-16*	FS10XL-16*	FS10L-T*	FS10L-NF*
	8 ft.	5UYK9	5UYL0	FS8L-16*	FS8XL-16*	FS8L-T*	FS8L-NF*
	6 ft.	FS6L	FS6XL	FS6L-16*	FS6XL-16*	FS6L-T*	FS6L-NF*
	5 ft.	5UYK5	5UYK6	FS5L-16*	FS5XL-16*	FS5L-T*	FS5L-NF*
	3 ft.	5UYK1	5UYK2	FS3L-16*	FS3XL-16*	FS3L-T*	FS3L-NF*

FLAG COLOR
SPECIFY FLAG COLOR AFTER MODEL NUMBER:

- ORANGE O = ORANGE
- GREEN G = GREEN
- YELLOW Y = YELLOW



For accessories and replacement parts, see pages 80-85

Telescoping Pole GENERAL PURPOSE LIGHTED WHIPS

FEATURES

- 8, 10, 13, 15, or 21 foot lengths available
- Water resistant, easy-lock, hot plug with 12" pigtail
- Adjusts quickly with Cam-Locks
- Coiled wire extends and retracts without binding
- Whip constructed with premium fiberglass resin
- Comes with orange flag with white reflective X

GORILLA® GENERAL PURPOSE LIGHTED WARNING WHIPS WITH TELESCOPING POLE are adjustable length whips that extend to 8, 10, 13, 15, and 21 feet. These whips are divided into sections that are connected by Cam-Locks. To adjust the whip length, simply flip the handle up on the Cam-Lock to loosen, extend the section(s) to desired length, and then flip down the handle on the Cam-Lock to tighten. This easy-to-use systems allows you to quickly remove a whip and break it down into a manageable size that can be easily stored in a vehicle.

With a high-visibility flag and light, these warning whips provide easy identification of other vehicles, equipment, and important sites in your area. Telescoping pole whips feature a painted white fiberglass pole that protects against fiber bloom and a heavy duty Day Bright™ fluorescent nylon mesh flag with a 3M® Scotchlite® reflective X. This system requires a Hitch Mount or Flat Mount for vehicle attachment. Lighted models feature lamp socket, a superior coiled wire that easily extends and retracts without pinching or binding, and a water-resistant, easy-lock hot plug with 12" pigtail for power connection.

MODEL NUMBERS FOR TELESCOPING POLE LIGHTED WHIPS

(includes coiled wire power cord, heavy duty easy-lock hot plug and 12" pigtail)

*AVAILABLE THROUGH GRAINGER SOURCING

Pole Length	MODEL	DESCRIPTION
21 ft.	TPCWHP21XL-16-0*	21 ft. Pole Collapsed Length: 118"
15 ft.	TPCWHP15XL-16-0*	15 ft. Pole Collapsed Length: 94"
13 ft.	TPCWHP13XL-16-0*	13 ft. Pole Collapsed Length: 92"
10 ft.	TPCWHP10XL-16-0*	10 ft. Pole Collapsed Length: 77"
8 ft.	TPCWHP8XL-16-0*	8 ft. Pole Collapsed Length: 62"

FLAG COLOR
COMES STANDARD WITH 16" x 16" ORANGE FLAG AND WHITE 3M® SCOTCHLITE® REFLECTIVE X



EASY-TO-USE CAM-LOCKS



Quick Disconnect Base GENERAL PURPOSE LIGHTED WHIPS

FEATURES

- 3, 5, 6, 8, 10, or 12 foot lengths available
- Quickly attach or detach from vehicle
- Wide variety of lighting options
- Choose from heavy duty orange, green or yellow flag
- Whip constructed of premium fiberglass resin
- Quick Disconnect Base has stainless steel components

GORILLA® GENERAL PURPOSE LIGHTED WARNING WHIPS WITH QUICK DISCONNECT BASE include a heavy duty Day Bright™ fluorescent nylon mesh flag with or without 3M® Scotchlite® reflective X, premium fiberglass resin whip, and male disconnect base (female base must be purchased separately). Heavy duty wiring helps reduce shorts caused by extreme conditions. Individual lights must be bought separately (see page 81 for lighting options). Available in 3, 5, 6, 8, 10 or 12 foot lengths and your choice of an orange, green, or yellow flag.

MODEL NUMBERS FOR QUICK DISCONNECT BASE LIGHTED WHIPS (includes Male Quick Disconnect Mounting Base, Lamp Socket and Hot Plug with 12" Pigtail)*

Type of Flag	12" x 11"	12" x 11" w/ X	16 x 16"	16 x 16" w/ X	No Flag	
Pole Length	12 ft.	16D778	16D782	FS12L-16-QD*	FS12XL-16-QD*	FS12L-QD-NF*
	10 ft.	16D770	16D774	FS10L-16-QD*	FS10XL-16-QD*	FS10L-QD-NF*
	8 ft.	16D802	16D806	FS8L-16-QD*	FS8XL-16-QD*	FS8L-QD-NF*
	6 ft.	16D794	16D796	FS6L-16-QD*	FS6XL-16-QD*	FS6L-QD-NF*
	5 ft.	16D790	16D792	FS5L-16-QD*	FS5XL-16-QD*	FS5L-QD-NF*
	3 ft.	16D786	16D788	FS3L-16-QD*	FS3XL-16-QD*	FS3L-QD-NF*

*AVAILABLE THROUGH GRAINGER SOURCING

FLAG COLOR - SPECIFY FLAG COLOR AFTER MODEL NUMBER:

ORANGE O GREEN G YELLOW Y

* FEMALE QUICK DISCONNECT BASE MOUNT MUST BE PURCHASED SEPARATELY.

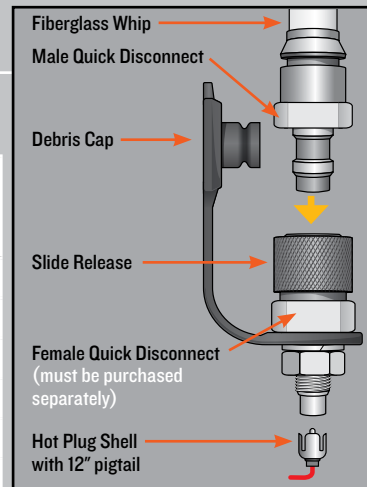


Figure A

To install, connect Male Quick Disconnect to Female Quick Disconnect by pulling the spring-loaded Slide Release down while firmly pushing the male and female components together and releasing the Slide Release. Attach Hot Plug Shell to the base of the Female Quick Disconnect to supply power to the Whip Light.



Split Pole and Quick Disconnect Base GENERAL PURPOSE LIGHTED WHIPS

For accessories and replacement parts, see pages 80-85

FEATURES

- 8, 10, or 12 foot lengths available
- Quickly attach or detach from vehicle
- Easily breaks down into smaller sections
- Choose from heavy duty orange, green or yellow flag
- Wide variety of lighting options
- Whip constructed of premium fiberglass resin

GORILLA® GENERAL PURPOSE SPLIT POLE LIGHTED WARNING WHIPS have a Quick Disconnect connection in the center so they can be broken down into smaller pieces for storage in a toolbox, trunk or truck. Bottom half has a Male Quick Disconnect for quick vehicle detachment, when paired with a Female Quick Disconnect Base Mount or Hitch Mount (must be purchased separately). Lights must be bought separately (see page 81 for lighting options). Available in 8, 10 or 12 foot lengths and your choice of an orange, green, or yellow flag.

MODEL NUMBERS FOR SPLIT POLE LIGHTED WHIPS (includes Male Quick Disconnect Mounting Base, Lamp Socket and Hot Plug with 12" Pigtail)*

Type of Flag	12" x 11"	12" x 11" w/ X	16 x 16"	16 x 16" w/ X	No Flag	
Pole Length	12 ft.	16D779	16D783	FS12L-16-SPQD*	FS12XL-16-SPQD*	FS12L-SPQD-NF*
	10 ft.	16D771	16D775	FS10L-16-SPQD*	FS10XL-16-SPQD*	FS10L-SPQD-NF*
	8 ft.	16D803	16D807	FS8L-16-SPQD*	FS8XL-16-SPQD*	FS8L-SPQD-NF*

*AVAILABLE THROUGH GRAINGER SOURCING

FLAG COLOR - SPECIFY FLAG COLOR AFTER MODEL NUMBER:

ORANGE O GREEN G YELLOW Y

* FEMALE QUICK DISCONNECT BASE MOUNT MUST BE PURCHASED SEPARATELY.



Refer to Figure A above. To install, connect Male Quick Disconnect to Female Quick Disconnect by pulling the spring-loaded Slide Release down while firmly pushing the male and female components together and releasing the Slide Release. Attach Hot Plug Shell to the base of the Female Quick Disconnect to supply power to the Whip Light.



Threaded Hex Base GENERAL PURPOSE NON-LIGHTED WHIPS

FEATURES

- 3, 5, 6, 8, 10, or 12 foot lengths available
- Heavy duty Day Bright™ fluorescent nylon mesh flag with or without 3M® Scotchlite® reflective X
- Flags available in orange, green or yellow
- Whip constructed of premium fiberglass resin
- Hitch mount available

GORILLA® GENERAL PURPOSE NON-LIGHTED WARNING WHIPS WITH THREADED HEX BASE include a heavy duty Day Bright™ fluorescent nylon mesh flag with or without 3M® Scotchlite® reflective X, premium fiberglass resin whip, and your choice of base mount. Threaded Hex Base Warning Whips are available in 3, 5, 6, 8, 10 or 12 foot lengths and your choice of an orange, green, or yellow flag.

MODEL NUMBERS FOR THREADED HEX BASE NON-LIGHTED WHIPS

(includes Mounting Base and Flag)

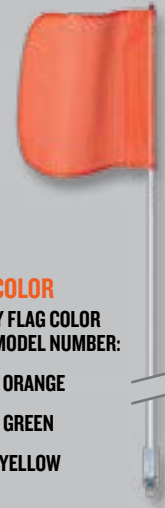
*AVAILABLE THROUGH GRAINGER SOURCING

Type of Flag		12" x 11"	12" x 11" w/ X	16" x 16"	16" x 16" w/ X	Triangle	No Flag
Pole Length	12 ft.	5UYL5	5UYL6	FS12-16*	FS12X-16*	FS12-T*	FS12-NF*
	10 ft.	5UYL1	5UYL2	FS10-16*	FS10X-16*	FS10-T*	FS10-NF*
	8 ft.	5UYK7	5UYK8	FS8-16*	FS8X-16*	FS8-T*	FS8-NF*
	6 ft.	FS6	FS6X	FS6-16*	FS6X-16*	FS6-T*	FS6-NF*
	5 ft.	5UYK3	5UYK4	FS5-16*	FS5X-16*	FS5-T*	FS5-NF*
	3 ft.	5UYJ9	5UYK0	FS3-16*	FS3X-16*	FS3-T*	FS3-NF*

FLAG COLOR

SPECIFY FLAG COLOR AFTER MODEL NUMBER:

- O = ORANGE
- G = GREEN
- Y = YELLOW



Telescoping Pole GENERAL PURPOSE NON-LIGHTED WHIPS

For accessories and replacement parts, see pages 82-85

FEATURES

- 8, 10, 13, 15, or 21 foot lengths available
- Tallest flag in the Gorilla line
- Adjusts quickly with Cam-Locks
- Heavy duty orange Day Bright™ fluorescent nylon mesh flag with 3M® Scotchlite® reflective X
- Whip constructed of premium fiberglass resin

GORILLA® GENERAL PURPOSE NON-LIGHTED WARNING WHIPS WITH TELESCOPING POLE are adjustable length whips that extend to 8, 10, 13, 15, and 21 feet. These whips are divided into sections that are connected by Cam-Locks. To adjust the whip length, simply flip the handle up on the Cam-Lock to loosen, extend the section(s) to desired length, and then flip down the handle on the Cam-Lock to tighten. This easy-to-use systems allows you to quickly remove a whip and break it down into a manageable size that can be easily stored in a vehicle.

With a high-visibility flag, these warning whips provide easy identification of other vehicles, equipment, and important sites in your area. Telescoping pole whips feature a painted white fiberglass pole that protects against fiber bloom and a heavy duty Day Bright™ fluorescent nylon mesh flag with a 3M® Scotchlite® reflective X. This system requires a Hitch Mount for vehicle attachment.

MODEL NUMBERS FOR TELESCOPING POLE NON-LIGHTED WHIPS

(includes Orange Flag with White Reflexite X)

*AVAILABLE THROUGH GRAINGER SOURCING

		MODEL	DESCRIPTION
Pole Length	21 ft.	TP21X-16-0	21 ft. Pole Collapsed Length: 118"
	15 ft.	TP15X-16-0	15 ft. Pole Collapsed Length: 94"
	13 ft.	TP13X-16-0	13 ft. Pole Collapsed Length: 92"
	10 ft.	TP10X-16-0	10 ft. Pole Collapsed Length: 77"
	8 ft.	TP8X-16-0	8 ft. Pole Collapsed Length: 62"

FLAG COLOR

COMES STANDARD WITH 16" x 16" ORANGE FLAG AND WHITE 3M® SCOTCHLITE® REFLECTIVE X



EASY-TO-USE CAM-LOCKS





Quick Disconnect Base GENERAL PURPOSE NON-LIGHTED WHIPS

FEATURES

- 3, 5, 6, 8, 10, or 12 foot lengths available
- Quickly attach or detach from vehicle
- Includes Debris Cap to keep unconnected base clean
- Choose from heavy duty orange, green or yellow flag
- Whip constructed of premium fiberglass resin
- Quick Disconnect Base has stainless steel components

GORILLA® GENERAL PURPOSE NON-LIGHTED WARNING WHIPS WITH QUICK DISCONNECT BASE include a heavy duty Day Bright™ fluorescent nylon mesh flag with or without 3M® Scotchlite® reflective X, premium fiberglass resin whip, and male disconnect base (female base must be purchased separately). Available in 3, 5, 6, 8, 10 or 12 foot lengths and your choice of an orange, green, or yellow flag.

MODEL NUMBERS FOR QUICK DISCONNECT BASE NON-LIGHTED WHIPS (includes Male Quick Disconnect Mounting Base)*

Type of Flag	12" x 11"	12" x 11" w/ X	16 x 16"	16 x 16" w/ X	No Flag	
Pole Length	12 ft.	16D780	16D784	FS12-16-QD*	FS12X-16-QD*	FS12-QD-NF*
	10 ft.	16D772	16D776	FS10-16-QD*	FS10X-16-QD*	FS10-QD-NF*
	8 ft.	16D804	16D808	FS8-16-QD*	FS8X-16-QD*	FS8-QD-NF*
	6 ft.	16D795	16D797	FS6-16-QD*	FS6X-16-QD*	FS6-QD-NF*
	5 ft.	16D791	16D793	FS5-16-QD*	FS5X-16-QD*	FS5-QD-NF*
	3 ft.	16D787	16D789	FS3-16-QD*	FS3X-16-QD*	FS3-QD-NF*

*AVAILABLE THROUGH GRAINGER SOURCING

FLAG COLOR - SPECIFY FLAG COLOR AFTER MODEL NUMBER:

ORANGE O GREEN G YELLOW Y

* FEMALE QUICK DISCONNECT BASE MOUNT MUST BE PURCHASED SEPARATELY.

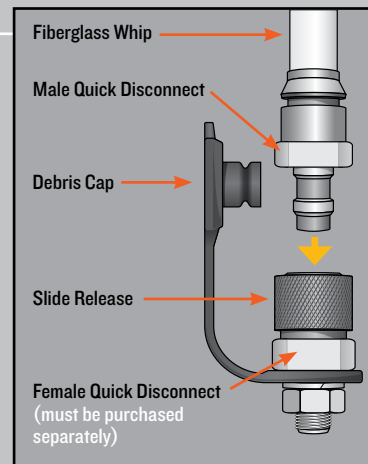


Figure B

To install, connect Male Quick Disconnect to Female Quick Disconnect by pulling the spring-loaded Slide Release down while firmly pushing the male and female components together and releasing the Slide Release.



Split Pole and Quick Disconnect Base GENERAL PURPOSE NON-LIGHTED WHIPS

For accessories and replacement parts, see pages 82-85

FEATURES

- 8, 10, or 12 foot lengths available
- Quickly attach or detach from vehicle
- Easily breaks down into smaller sections
- Choose from heavy duty orange, green or yellow flag
- Whip constructed of premium fiberglass resin
- Hitch mounts available

GORILLA® GENERAL PURPOSE SPLIT POLE LIGHTED WARNING WHIPS have a Quick Disconnect connection in the center so they can be broken down into smaller pieces for storage in a toolbox, trunk or truck. Bottom half has a Male Quick Disconnect for quick vehicle detachment, when paired with a Female Quick Disconnect Base Mount or Hitch Mount (must be purchased separately). Available in 8, 10 or 12 foot lengths and your choice of an orange, green, or yellow flag.

MODEL NUMBERS FOR SPLIT POLE NON-LIGHTED WHIPS (includes Male Quick Disconnect Mounting Base)*

Type of Flag	12" x 11"	12" x 11" w/ X	16 x 16"	16 x 16" w/ X	No Flag	
Pole Length	12 ft.	16D781	16D785	FS12-16-SPQD*	FS12X-16-SPQD*	FS12-SPQD-NF*
	10 ft.	16D773	16D777	FS10-16-SPQD*	FS10X-16-SPQD*	FS10-SPQD-NF*
	8 ft.	16D805	16D809	FS8-16-SPQD*	FS8X-16-SPQD*	FS8-SPQD-NF*

*AVAILABLE THROUGH GRAINGER SOURCING

FLAG COLOR - SPECIFY FLAG COLOR AFTER MODEL NUMBER:

ORANGE O GREEN G YELLOW Y

* FEMALE QUICK DISCONNECT BASE MOUNT MUST BE PURCHASED SEPARATELY.



Refer to Figure B above. To install, connect Male Quick Disconnect to Female Quick Disconnect by pulling the spring-loaded Slide Release down while firmly pushing the male and female components together and releasing the Slide Release.

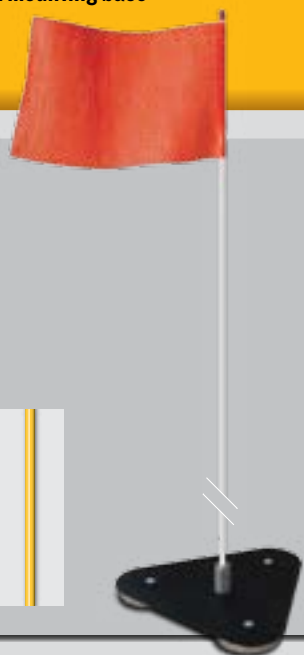


LIGHT DUTY WARNING WHIPS

for recreational and light duty applications

FEATURES

- Seven whip colors to choose from
- Durable nylon-mesh orange flag
- Includes threaded hex mounting base

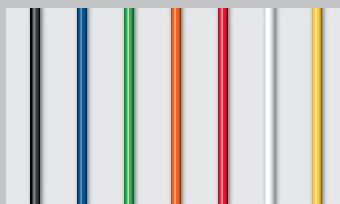


GORILLA® LIGHT DUTY WARNING WHIPS include a non-lighted, 7-foot flexible fiberglass whip with an orange flag and threaded hex base mount. Light duty whips are ideal for recreational equipment, and also make great markers for points of interest or caution.

MODEL	DESCRIPTION
5UYT0	BLACK 7 ft. Whip with Flag and Threaded Hex Mounting Base
5YMH6	BLUE 7 ft. Whip with Flag and Threaded Hex Mounting Base
FSRR7G-HB*	GREEN 7 ft. Whip with Flag and Threaded Hex Mounting Base
5YMH7	ORANGE 7 ft. Whip with Flag and Threaded Hex Mounting Base
5YMH8	RED 7 ft. Whip with Flag and Threaded Hex Mounting Base
5YMH9	WHITE 7 ft. Whip with Flag and Threaded Hex Mounting Base
FSRR7Y-HB*	YELLOW 7 ft. Whip with Flag and Threaded Hex Mounting Base

*AVAILABLE THROUGH GRAINGER SOURCING

WHIP COLORS



For accessories and replacement parts, see pages 82-85





HEAVY DUTY LIGHTED WHIPS

with Stainless Steel Threaded Mounting Base

FEATURES

- 3, 5, 6, 8, 10, or 12 foot lengths available
- Includes heavy duty spring mount
- Heavy duty DAY BRIGHT™ Florescent orange nylon mesh flag with yellow 3M® Scotchlite® reflective X
- Whip constructed of premium fiberglass resin
- High-quality continuous power cable from light to base

SUPER WHIPS® HEAVY DUTY LIGHTED WARNING WHIPS with stainless steel threaded mounting base are designed without a lamp socket connection to eliminate failures often caused by socket corrosion.

SUPER WHIPS® WARNING WHIPS include a sealed electrical connection with 18" pigtail, premium fiberglass resin whip, Heavy Duty DAY BRIGHT™ Florescent orange flag with yellow 3M® Scotchlite® reflective X, and a ultra heavy duty spring mount. These whips are wired with a high quality power cable that is integrated directly into the whips, which eliminates potential breaks to the internal wires. They also include a polyolefin heat-shrink tubing to contain the fiberglass and prevent personal injury from fiberglass deterioration or fractures in the fiberglass whip. SUPER WHIPS® are engineered with a cold temperature rating of -75° C/-103° F.

SUPER WHIPS® are available in 3, 5, 6, 8, 10 or 12 foot lengths and come with a solid amber 12 LED light and a 12" x 11" orange nylon flag with a yellow 3M® Scotchlite® reflective X.

MODEL NUMBERS FOR SUPER WHIPS

(Includes chrome plated heavy duty spring mount with 18" pigtail, flag, I2 LED amber light)

Type of Flag	12" x 11" w/ X
Pole Length	12 ft. SW12*
	10 ft. SW10*
	8 ft. SW8*
	6 ft. SW6*
	5 ft. SW5*
	3 ft. SW3*

*AVAILABLE THROUGH GRAINGER SOURCING

FLAG COLOR
COMES STANDARD WITH 12" x 11" ORANGE FLAG AND YELLOW 3M® SCOTCHLITE™ REFLECTIVE X



For accessories and replacement parts, see pages 81-85

12 Volt, 12 Amber LED Light

Sealed Electrical Connection

Heavy duty DAY BRIGHT™ Florescent orange nylon mesh flag with yellow 3M® Scotchlite® reflective X

Continuous power cable from LED to mounting base

Polyolefin heat shrink tubing to prevent fiberbloom and fractures from top to bottom



Sealed Base

Stainless steel mounting base

Ultra Heavy Duty Zinc Plated Spring Mount

Pigtail extends 18" from spring mount



Spring mount with 1" threads



HEAVY DUTY REPLACEMENT LIGHTS

for Gorilla Heavy Duty Lighted Warning Whips

EASY-TO-USE

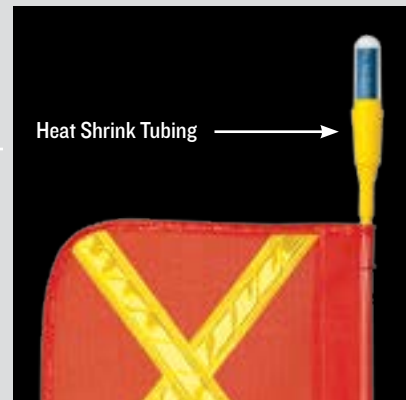
One of the benefits to using Gorilla® Heavy Duty Lighted Whips is the ease of changing lighting options. In a matter of minutes you can alter a whip to fit any need that arises for a vehicle.

GORILLA® HEAVY DUTY LIGHTED WARNING WHIPS are available with two different lighting styles: LED Rocket™ and LED Glo-Worm™. These lighting options are easy to connect and available in five different color options: Amber, Green, Red, Blue and White. Each lighting option works with any GORILLA® HEAVY DUTY LIGHTED WARNING WHIP.

EASY-TO-INSTALL INTERCHANGEABLE LAMPS

Gorilla Heavy Duty Lighted Whips feature interchangeable LED lights so there is no need to return your whips to the factory for replacement. To replace a light, simply:

1. Slit the heat-shrink tubing
2. Remove the old light
3. Install the new light
4. Reseal with new heat-shrink tubing (included with all new lights)



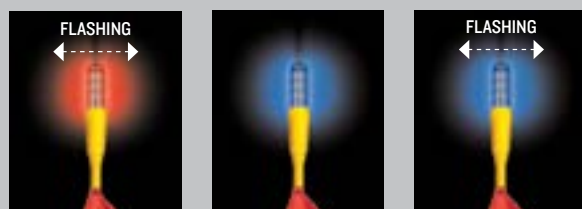
ROCKET™ SUPER BRIGHT LED LIGHTS for Gorilla Heavy Duty Lighted Whips (360° visibility and heat-shrink tubing)



GSRKT-6WNF GSRKT-6WF GSRKT-3AF/3RF



GSRKT-6ANF GSRKT-6AF GSRKT-6RNF

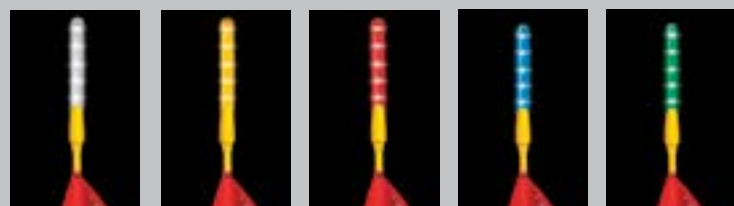


GSRKT-6RF GSRKT-6BNF GSRKT-6F

MODEL	COLOR	VOLT	AMPS	LUMENS	DESCRIPTION
GSRKT-6WNF*	White	12-24	.23	68	Super Bright Non-Flashing LED Light, 6 White
GSRKT-6WF*	White	12-24	.23	280	Super Bright Flashing LED Light, 6 White
GSRKT-3AF/3RF*	Amber/Red	12-24	.23	92	Super Bright Flashing LED Light, 3 Amber/ 3 Red
GSRKT-6ANF*	Amber	12-24	.23	19	Super Bright Non-Flashing LED Light, 6 Amber
GSRKT-6AF*	Amber	12-24	.23	77	Super Bright Flashing LED Light, 6 Amber
GSRKT-6RNF*	Red	12-24	.23	24	Super Bright Non-Flashing LED Light, 6 Red
GSRKT-6RF*	Red	12-24	.23	107	Super Bright Flashing LED Light, 6 Red
GSRKT-6BNF*	Blue	12-24	.23	13	Super Bright Non-Flashing LED Light, 6 Blue
GSRKT-6BF*	Blue	12-24	.23	60	Super Bright Flashing LED Light, 6 Blue
GSRKT-6GNF*	Green	12-24	.23	41	Super Bright Non-Flashing LED Light, 6 Green
GSRKT-6GF*	Green	12-24	.23	170	Super Bright Flashing LED Light, 6 Green

*AVAILABLE THROUGH GRAINGER SOURCING

GLO-WORM™ LIGHTS for Gorilla Heavy Duty Lighted Whips (with heat-shrink tubing)



GSLED12-6-W GSLED12-6-A GSLED12-6-R GSLED12-6-B GSLED12-6-G

MODEL	COLOR	VOLTS	AMPS	DESCRIPTION
GSLED12-6-W*	White	12	.13	Glo-Worm LED Light, 6 in. Length, White
GSLED12-6-A*	Amber	12	.13	Glo-Worm LED Light, 6 in. Length, Amber
GSLED12-6-R*	Red	12	.13	Glo-Worm LED Light, 6 in. Length, Red
GSLED12-6-B*	Blue	12	.13	Glo-Worm LED Light, 6 in. Length, Blue
GSLED12-6-G*	Green	12	.13	Glo-Worm LED Light, 6 in. Length, Green

*AVAILABLE THROUGH GRAINGER SOURCING



HIGH VISIBILITY LIGHTS

Gorilla® General Purpose Lighted Whips offer one of the widest selections of lighting options in the industry. All of our lights are built with high quality materials and electrical components to withstand any working or weather conditions.

GENERAL PURPOSE REPLACEMENT LIGHTS for Gorilla General Purpose Lighted Warning Whips

GORILLA® GENERAL PURPOSE LIGHTED WARNING WHIPS are available with three different lighting styles: LED Rocket™, LED Glo-Worm™, or Traditional Lens. These lighting options are easy to connect and available in five different color options: Amber, Green, Red, Blue and White. Each lighting option works with any GORILLA® GENERAL PURPOSE LIGHTED WARNING WHIP.

ROCKET™ SUPER BRIGHT LED LIGHTS for Gorilla General Purpose Lighted Whips (360° visibility)


MODEL	COLOR	VOLT	AMPS	LUMENS	DESCRIPTION
FSRKT-6WNF*	White	12-24	.23	68	Super Bright Non-Flashing LED Light, 6 White
FSRKT-6WF*	White	12-24	.23	280	Super Bright Flashing LED Light, 6 White
5UYPI	Amber/Red	12-24	.23	92	Super Bright Flashing LED Light, 3 Amber/ 3 Red
5UYP2	Amber	12-24	.23	19	Super Bright Non-Flashing LED Light, 6 Amber
5UYP3	Amber	12-24	.23	77	Super Bright Flashing LED Light, 6 Amber
5UYP4	Red	12-24	.23	24	Super Bright Non-Flashing LED Light, 6 Red
5UYP5	Red	12-24	.23	107	Super Bright Flashing LED Light, 6 Red
FSRKT-6BNF*	Blue	12-24	.23	13	Super Bright Non-Flashing LED Light, 6 Blue
FSRKT-6BF*	Blue	12-24	.23	60	Super Bright Flashing LED Light, 6 Blue
5UYP6	Green	12-24	.23	41	Super Bright Non-Flashing LED Light, 6 Green
5UYP7	Green	12-24	.23	170	Super Bright Flashing LED Light, 6 Green
WLED-ANF*	Amber	12	.23	234	Super Bright Non-Flashing LED Light, 12 Amber
WLED-WNF*	White	12	.23	234	Super Bright Non-Flashing LED Light 12 White

*AVAILABLE THROUGH GRAINGER SOURCING


TRADITIONAL LENS KIT for Gorilla General Purpose Lighted Whips (Includes lens, chrome lens cap and 12 Volt Lamp)

MODEL	COLOR	VOLTS	AMPS	DESCRIPTION
5UYL9	White	12	.65	Traditional High-Impact Plastic Lens Kit with Lens Cap and Lamp, White
5UYN0	Amber	12	.65	Traditional High-Impact Plastic Lens Kit with Lens Cap and Lamp, Amber
5UYN1	Red	12	.65	Traditional High-Impact Plastic Lens Kit with Lens Cap and Lamp, Red
5UYN2	Blue	12	.65	Traditional High-Impact Plastic Lens Kit with Lens Cap and Lamp, Blue
5UYN3	Green	12	.65	Traditional High-Impact Plastic Lens Kit with Lens Cap and Lamp, Green


KIT COMPONENTS (ALL INCLUDED)



Lamp, 12 Volt (1156)



Chrome Lens Cap



Traditional Lens

GLO-WORM™ LIGHTS for Gorilla General Purpose Lighted Whips

MODEL	COLOR	VOLTS	AMPS	DESCRIPTION
5UYN6	White	12	.13	Glo-Worm LED Light, 6 in. Length, White
5UYN7	Amber	12	.13	Glo-Worm LED Light, 6 in. Length, Amber
5UYN8	Red	12	.13	Glo-Worm LED Light, 6 in. Length, Red
5UYN9	Blue	12	.13	Glo-Worm LED Light, 6 in. Length, Blue
5UYN0	Green	12	.13	Glo-Worm LED Light, 6 in. Length, Green

CHECKERS®

INDUSTRIAL SAFETY PRODUCTS

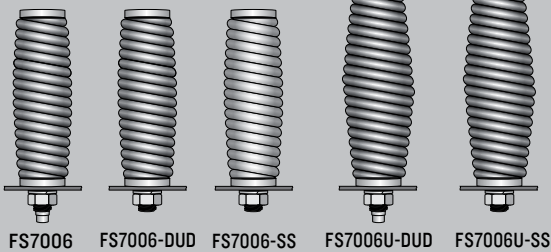
ACCESSORIES & REPLACEMENT PARTS

for Warning Whips

WHAT YOU NEED

One of the benefits to using Checkers Warning Whips is having the ability to use our wide variety of mounting options that accommodate almost any need you may have. We also offer a full selection of replacement parts.

SPRING MOUNTS



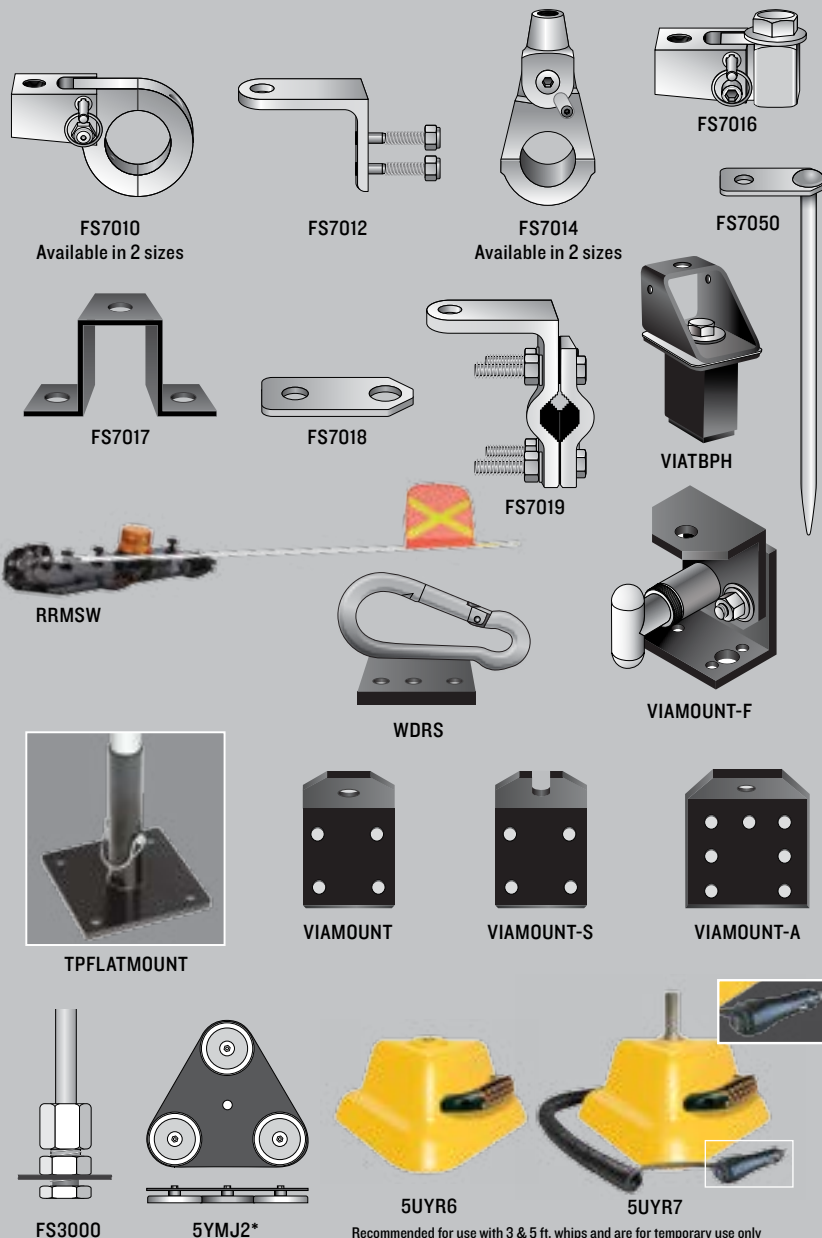
MODEL	DESCRIPTION
5UYR2	Heavy Duty Spring Mount with Bright Zinc Finish for Lighted Models in 3 ft to 8 ft lengths*
FS7006-DUD*	Heavy Duty Spring Mount with Bright Zinc Finish for Non-Lighted Models in 3 ft to 8 ft lengths*
FS7006-SS*	Heavy Duty Spring Mount with Stainless Steel Finish for Lighted Models in 3 ft to 8 ft lengths*
5UYR3	Ultra Heavy Duty Spring Mount with Bright Zinc Finish for Lighted Models in 10 ft to 12 ft lengths*
FS7006U-DUD*	Ultra Heavy Duty Spring Mount with Bright Zinc Finish for Non-Lighted Models in 10 ft to 12 ft lengths*

**(Includes Lock Washer and Jam Nut)*

***AVAILABLE THROUGH GRAINGER SOURCING**

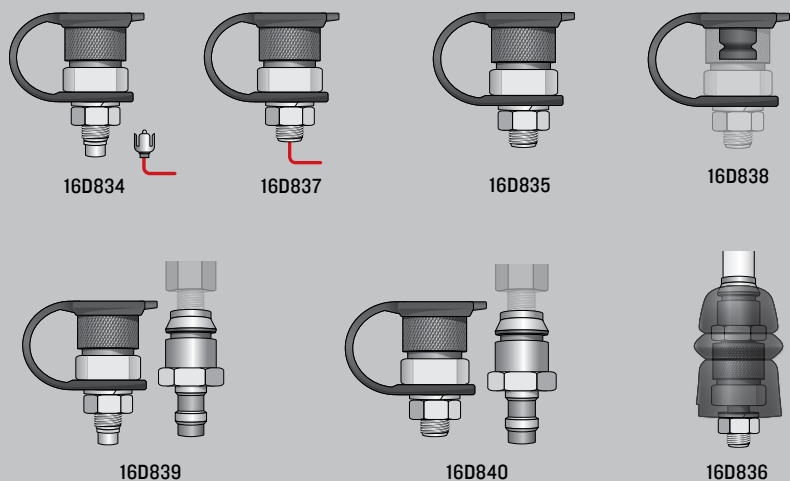
ASSORTED MOUNTS

***AVAILABLE FOR GRAINGER SOURCING**



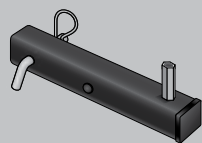
MODEL	DESCRIPTION
FS7010-1.5*	Billet, Fold-Down, Clamp Mount Bracket for 1.5" Round Tubing
FS7010-1.75*	Billet, Fold-Down, Clamp Mount Bracket for 1.75" Round Tubing
FS7012*	Aluminum "L" Bracket Mount (Mounting Hardware Included)
FS7014-1.5*	Billet, Fold-Down, Clamp Mount Bracket for 1.5" Round Tubing
FS7014-1.75*	Billet, Fold-Down, Clamp Mount Bracket for 1.75" Round Tubing
FS7016*	Billet, Fold-Down, Tab Mount Bracket
FS7017*	12 Ga. Black Powder-Coated Steel, Flat Surface Mounting Bracket
FS7018*	Steel Fire Hydrant/Flange Mount with Bright Zinc Finish
FS7019*	Aluminum tube style mirror bracket for 1/2" to 1" OD. (Mounting hardware included)
FS7050*	Steel Stake Mount with Bright Zinc Finish
VIATBPH*	TEMPORARY mount for truck bed post holes
RRMSW*	Aluminum Roof Rack with fold-down mounting bracket with strobe light and 5' Super Whip.
WDRS*	Steel Fold Down Whip Retainer Bracket, Black Powder Coated with Three 1/4" Universal Mounting Holes. Quickly Fastens Whips Down (Mounting Hardware NOT Included)
TPFLATMOUNT*	Flat Mount Bracket with Mounting Holes
VIAMOUNT-F*	Steel Quick Release Fold Down Mounting Bracket, Black Powder Coated with Stainless Steel Hardware (Mounting Hardware NOT Included)
VIAMOUNT*	Steel "L" Mounting Bracket, Black Powder Coated with Four 1/4" Universal Mounting Holes and 1/2" Hole for Attaching Whip (Mounting Hardware NOT Included)
VIAMOUNT-S*	Steel "L" Mounting Bracket, Black Powder Coated with Four 1/4" Universal Mounting Holes and 1/2" Slit for Attaching Whip (Mounting Hardware NOT Included)
VIAMOUNT-A*	Steel "L" Mounting Bracket, Black Powder Coated with Seven 1/4" Universal Mounting Holes and 1/2" Hole for Attaching Whip (Mounting Hardware NOT Included)
FS3000*	Replacement Compression Hex Base Mount - ONLY for Light Duty Non-Lighted Whips
5YMJ2	Magnetic Mounting Base - ONLY for Light Duty Non-Lighted Whips up to 7 ft.
5UYR6	Magnetic Mount Base with Handle
5UYR7	Magnetic Mount Base w/ Handle & 7' Coiled Power Cord w/ Switch-On Lighter Plug

QUICK DISCONNECT PARTS

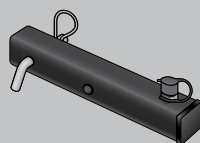


MODEL	DESCRIPTION
16D834	Female Quick Disconnect Base Mount with Hot Plug with 12" Pigtail and Debris Cap (for Lighted Models)
16D837	Female Quick Disconnect Base Mount with 12" Pigtail and Debris Cap (for Lighted Models)
16D835	Female Quick Disconnect Base Mount with Debris Cap (for Non-Lighted Models)
16D839*	Quick Disconnect Base Mount Kit with Female/Male Components and Debris Cap (for Lighted Models) *Use to convert a Threaded Hex Base Mount into a Male Quick Disconnect
16D840*	Quick Disconnect Base Mount Kit with Female/Male Components and Debris Cap (for Non-Lighted Models) *Use to convert a Threaded Hex Base Mount into a Male Quick Disconnect
16D836	Quick Disconnect Protective Boot
16D838	Quick Disconnect Debris Cap Replacement

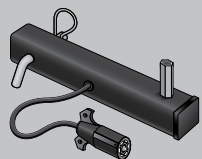
HITCH MOUNTS



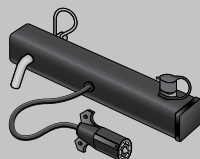
FS7015*
2" Hitch Mount with Threaded Hex Base (Non-Powered)



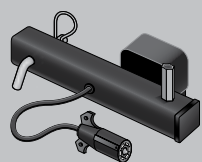
FS7015-QD*
2" Hitch Mount with Female Quick Disconnect Base and Debris Cap (Non-Powered)



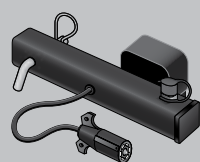
FS7015PC*
2" Hitch Mount with Threaded Hex Base and 24" Power Cord with 7-Way Plug



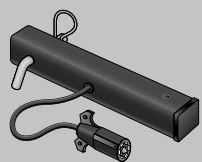
FS7015PC-QD*
2" Hitch Mount with Female Quick Disconnect Base Mount, Debris Cap and 24" Power Cord with 7-Way Plug



FS7015PC-BU*
2" Hitch Mount with Threaded Hex Base, 24" Power Cord with 7-Way Plug and Backup Alarm



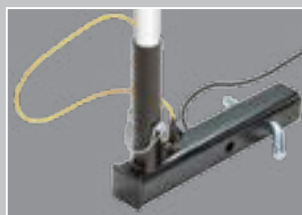
FS7015PC-BU-QD*
2" Hitch Mount with Female Quick Disconnect Base Mount, Debris Cap, 24" Power Cord with 7-Way Plug, and Backup Alarm



FS7015-PT*
2" Permanent Hitch Mount for Super Whip and Heavy Duty Gorilla Whip with 7-way power cord



TP7015*
2" Hitch Mount (Non-Powered)



TP7015PC*
2" Hitch Mount with 24" Power Cord with 7-Way Plug



TP7015PC-BU*
2" Hitch Mount with 24" Power Cord with 7-Way Plug and Backup Alarm

*AVAILABLE THROUGH GRAINGER SOURCING

CHECKERS®

INDUSTRIAL SAFETY PRODUCTS

ACCESSORIES & REPLACEMENT PARTS

for Warning Whips

THE BEST SELECTION

We offer a wide assortment of accessories, mounting and flag options, and replacement parts to accommodate any need you may have. We do our best to make it convenient and easy to use our Warning Whips in any situation.

EXTENSIONS for Gorilla Warning Whips



MODEL	DESCRIPTION
FSEXT-6*	6 ft. Whip Extension with Threaded Hex Base and Hot Plug
FSEXT-5*	5 ft. Whip Extension with Threaded Hex Base and Hot Plug
FSEXT-4*	4 ft. Whip Extension with Threaded Hex Base and Hot Plug
FSEXT-3*	3 ft. Whip Extension with Threaded Hex Base and Hot Plug
FSEXT-6-DUD*	6 ft. Whip Extension with Threaded Hex Base (Non-Powered)
FSEXT-5-DUD*	5 ft. Whip Extension with Threaded Hex Base (Non-Powered)
FSEXT-4-DUD*	4 ft. Whip Extension with Threaded Hex Base (Non-Powered)
FSEXT-3-DUD*	3 ft. Whip Extension with Threaded Hex Base (Non-Powered)

*AVAILABLE THROUGH GRAINGER SOURCING

MISC. PARTS for Gorilla Warning Whips



MODEL	DESCRIPTION
5UYR4	Easy Mount Adapter with 12" Hot Wire Pigtail
FS7008-2*	Easy Mount Adapter with 12" Hot Wire and Ground Wire Pigtails
5UYR8	Hot Plug
5UYR9	Hot Plug with 12" Hot Wire Pigtail
TP9028*	Hot Plug with Debris Cap and 12" Pigtail
FSWPPG*	Waterproof Hot Plug with 12" Hot Wire Pigtail
ZFLENS-RKT-C-4*	Replacement Lens for Rocket II LED Super Bright Lights
O5.WL.4LED.x*	Replacement Board for Rocket II LED Super Bright Lights ("x" represents color)

REPLACEMENT FLAGS

Heavy duty Day Bright™ fluorescent nylon mesh flag with 3M® Scotchlite® reflective X for Gorilla Heavy Duty Whips. Available in two sizes, three colors, and with the option of a white or yellow 3M® Scotchlite® reflective X. Mounting clips included.



Orange Flag
12" x 11" or 16" x 16"



Orange Flag w/
White X
12" x 11" or 16" x 16"



Orange Flag w/
Yellow X
12" x 11" or 16" x 16"



Green Flag
12" x 11" or 16" x 16"



Green Flag w/
White X
12" x 11" or 16" x 16"



Green Flag w/
Yellow X
12" x 11" or 16" x 16"



5YMJ1
Orange, Plastic-Coated
Nylon Mesh Flag for Light
Duty Whips
11 1/2" x 7 1/4" with Mounting
Clips



FSAF
Plastic-Coated, Nylon
Mesh, Double Sided,
Reflective American Flag
17" x 13"
Made in the USA



Yellow Flag
12" x 11" or 16" x 16"



Yellow Flag w/
White X
12" x 11" or 16" x 16"



Yellow Flag w/
Yellow X
12" x 11" or 16" x 16"



NYLON MESH
PATTERN

Type of Flag

ORANGE FLAG

GREEN FLAG

YELLOW FLAG

12" x 11"	12" x 11" w/ White X	12" x 11" w/ Yellow X	16" x 16"	16" x 16" w/ White X	16" x 16" w/ Yellow X
16D818	16D830	FS8025-0*	16D812	16D824	16D799
16D817	16D829	FS8025-G*	16D811	16D823	16D798
16D821	16D833	FS8025-Y*	16D815	16D827	16D801

*AVAILABLE THROUGH GRAINGER SOURCING

CHECKERS®

INDUSTRIAL SAFETY PRODUCTS



Dedicated to saving lives and protecting assets

www.checkersindustrial.com

Toll free: 800-438-9336

Ph: 720-890-1187 • Fx: 720-890-1191

620 Compton St. • Broomfield, CO 80020



MADE IN THE
USA

VERSION: 3/14

WE ARE
safety.