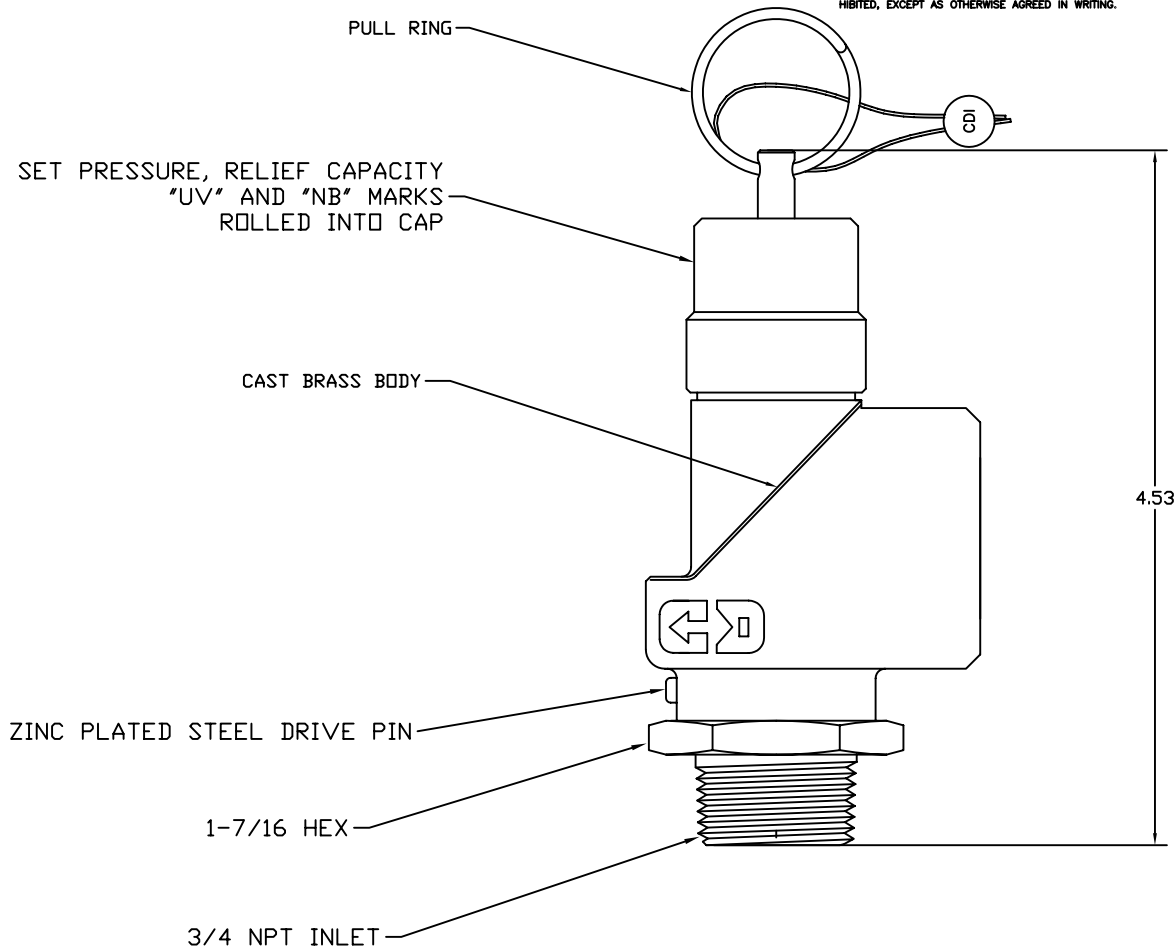


THIS DOCUMENT CONTAINS PROPRIETARY AND CONFIDENTIAL INFORMATION OF CONTROL DEVICES INC. AND MUST BE USED STRICTLY IN ACCORDANCE WITH THE LIMITED PURPOSE FOR WHICH IT WAS SUBMITTED. ANY REPRODUCTION, DISCLOSURE OR USE OF THIS DOCUMENT IS EXPRESSLY PROHIBITED, EXCEPT AS OTHERWISE AGREED IN WRITING.

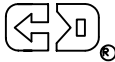
DATE	SYM	REVISION RECORD	ECN NO.	CK.



NOTES:

1. SET PRESSURE RANGE 50 TO 300 PSI
2. CERTIFIED RELIEF CAPACITY IS GIVEN BY THE EQUATION
 $Q = 3.26 (1.1P + 14.7)$, WHERE
 Q = RELIEF CAPACITY IN SCFM, AND
 P = SET PRESSURE IN PSI
3. MATERIALS OF CONSTRUCTION:
 BODY, ROD, DISK, ADJUSTMENT
 SPRING, PULL RING - STAINLESS STEEL
 O-RING - SILICONE OR FLUOROCARBON RUBBER
 SEAL - LEAD

ALL DIMENSIONS ARE IN INCHES.

TOLERANCES (EXCEPT AS NOTED)		 control devices inc. 711 HANLEY INDUSTRIAL COURT ST. LOUIS, MISSOURI 63144			
DECIMAL +		MATERIAL	SCALE	SIZE	DRAWN BY
FRACTIONAL +			1:1	B	<i>RMH</i>
ANGULAR ±		TITLE			
DATE		SAFETY VALVE, 3/4 NPT OUTLET			
7/29/98		CAD FILE	DRAWING NUMBER		
		Q:\ENGR\PARTDWGS\SCB7575.DWG	SCB7575		

APPROVED BY