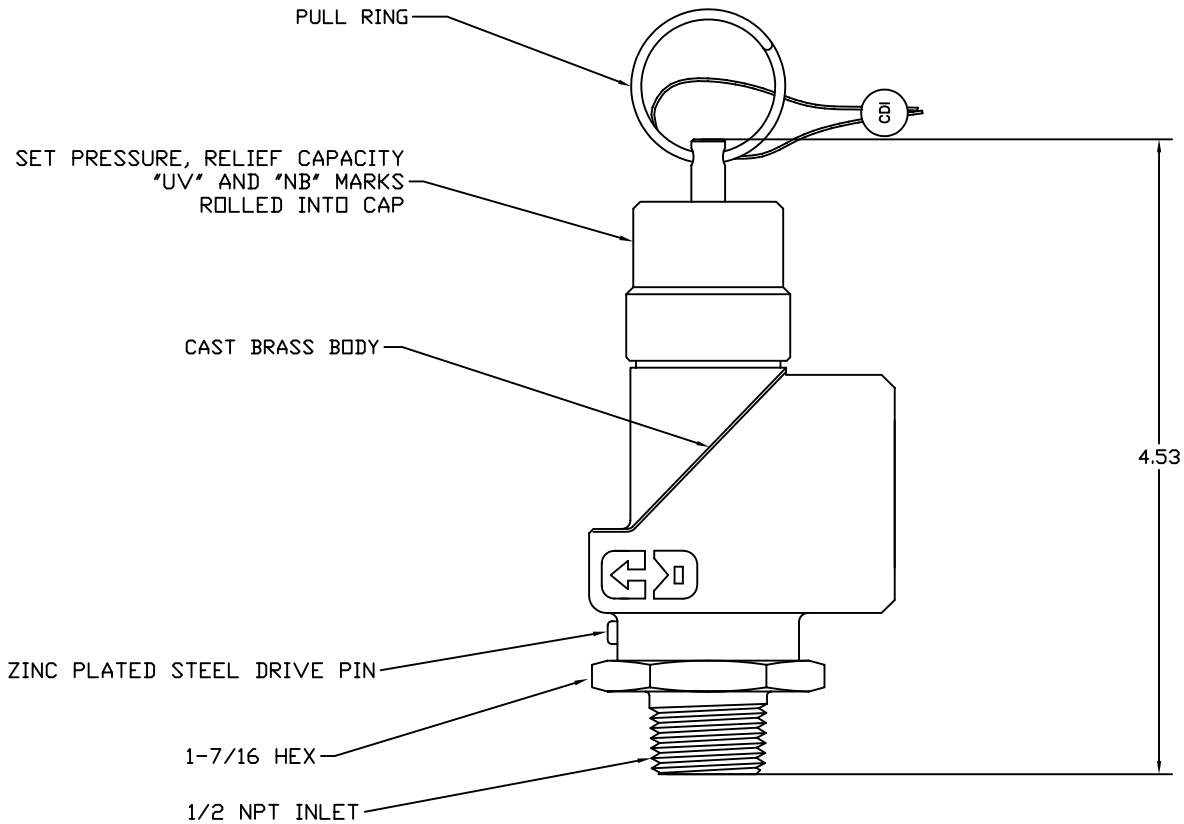


THIS DOCUMENT CONTAINS PROPRIETARY AND CONFIDENTIAL INFORMATION OF CONTROL DEVICES INC. AND MUST BE USED STRICTLY IN ACCORDANCE WITH THE LIMITED PURPOSE FOR WHICH IT WAS SUBMITTED. ANY REPRODUCTION, DISCLOSURE OR USE OF THIS DOCUMENT IS EXPRESSLY PROHIBITED, EXCEPT AS OTHERWISE AGREED IN WRITING.


DATE	SYM	REVISION RECORD	ECN NO.	CK.



NOTES:

1. SET PRESSURE RANGE 50 TO 300 PSI
2. CERTIFIED RELIEF CAPACITY IS GIVEN BY THE EQUATION

$$Q = 3.26 (1.1P + 14.7),$$
 WHERE
 Q = RELIEF CAPACITY IN SCFM, AND
 P = SET PRESSURE IN PSI
3. MATERIALS OF CONSTRUCTION:
 BODY, ROD, DISK, ADJUSTMENT
 SPRING, PULL RING - STAINLESS STEEL
 O-RING - SILICONE OR FLUOROCARBON RUBBER
 SEAL - LEAD
4. MAX TEMPERATURE 300 DEG F.

TOLERANCES (EXCEPT AS NOTED)		 control devices inc. 711 HANLEY INDUSTRIAL COURT ST. LOUIS, MISSOURI 63144			
DECIMAL +	MATERIAL	SCALE 1:1	SIZE B	DRAWN BY RMH	
FRACTIONAL +				APPROVED BY	
ANGULAR ±	TITLE SAFETY VALVE, 3/4 NPT OUTLET				
DATE 7/29/98	CAD FILE	DRAWING NUMBER SCB5075			
Q:\ENGR\PARTDWGS\SCB5075.DWG					

ALL DIMENSIONS ARE IN INCHES.