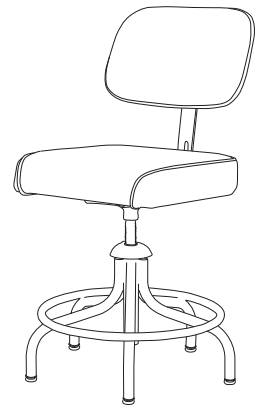




CHAIR ASSEMBLY INSTRUCTION GUIDE

for BEVCO EVANSTON CHAIRS

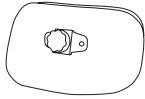
2000 Series Models



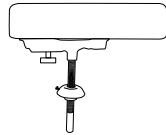
PARTS LIST



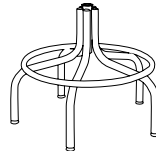
Support bar
(1)



Backrest
w/hinge assembly
and handwheel
(1)



Seat w/threaded
stem & bell
handwheel
(1)

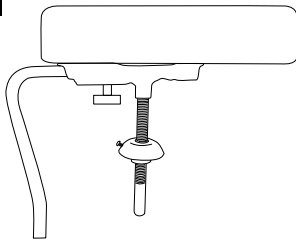


Tubular Base
(1)



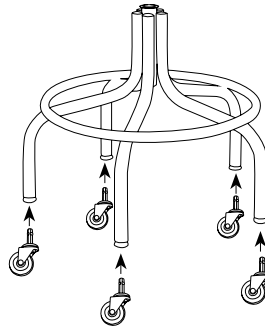
Casters
(optional)
(5)

1



Support bar is packed attached to seat. Loosen handwheel to remove support bar from seat bottom. Set aside.

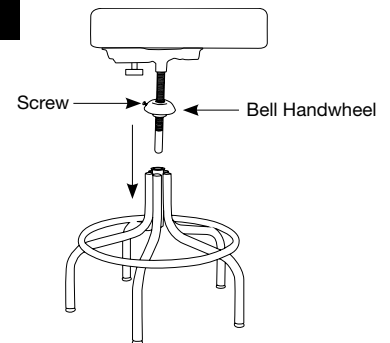
2



If optional casters were purchased with chair, insert caster into the end of each tubular steel leg.

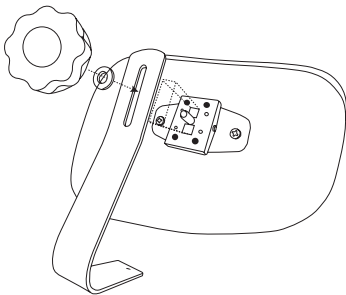
If casters were added after chair purchase, remove plastic glides, tap inserts into the end of each tubular steel leg using side of hammer, then insert casters.

3



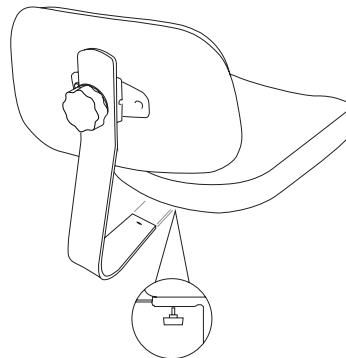
A) Insert stem of seat into base hub tube. **B)** Rotate large bell handwheel on threaded stem to select proper height. **C)** Tighten screw in bell handwheel enough to prevent removal of seat from base.

4



Remove handwheel and white washer from hinge assembly on backrest. Slide screw through slot in back support bar so it is aligned with the two raised squares on hinge assembly, then position white washer against back bar and then tighten handwheel securely.

5



Slide bottom of support bar into the seat control unit. Tighten handwheel securely.

REQUIRED MAINTENANCE

1. Every six (6) months lightly lubricate the threaded stem with a petroleum based grease.

2. Tighten all screws and handwheels periodically.

CAUTION: Failure to perform required maintenance may void your warranty.