



**Model 202** Stainless Steel Tray

Certified by NSF

**Features**

- Stainless steel tray for the food industry
- Electropolished and passivated to enhance corrosion resistance
- This tray fits most standard dollies and racks for easy storage
- Sanitary seamless construction makes this tray easy to clean and corrosion resistant
- Tray size is 18" x 26" x 1"



**Model 250** Stainless Steel Floor Drain

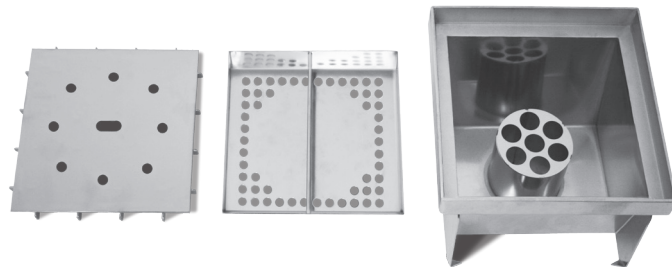
**Features**

- Heavy duty stainless steel construction
- Electropolished finish to enhance corrosion resistance
- Side view: Top to bottom 7.780"
- Top view: 9.750" x 9.750"

**Model 300** Stainless Steel Floor Drain

**Features**

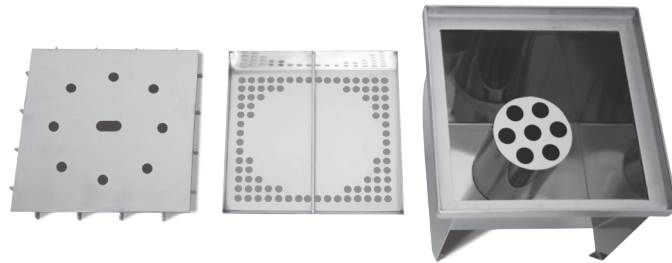
- Heavy duty stainless steel construction
- Electropolished finish to enhance corrosion resistance
- Side view: Top to bottom 11.125"
- Top view: 11.750" x 11.750"



**Model 560** Perforated False Bottom

**Features**

- Size is 15" x 18"
- Made from 18 gauge #304 stainless steel
- Fits all Columbia 16" x 19" x 10" bowls
- Numerous perforations for easy fluid flow
- Creased and notched for easy removal/cleaning



**Model 1010** Duo Basket Strainer

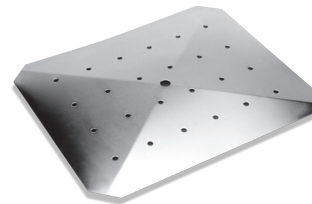
**Features**

- Removable basket allows for quick disposal of debris and food waste
- Durable stainless steel construction.
- Basket can be inserted to allow draining or turned to seal drain outlet. Seal gasket and securing nuts included.

**Model 1040** Wall Mounting Bracket

**Features**

- Standard for all wall mounted sinks



Model 560

Model 1010



Model 1040