

2021

TRANSPORTATION SAFETY PRODUCTS

A photograph of a man wearing a black baseball cap, sunglasses, and a blue and white plaid shirt, sitting in the driver's seat of a red truck. He is looking out the window. The truck's interior and exterior are visible.

**MOVING  
THROUGH  
LIFE SAFELY**



# ABOUT DEFLECTO

For over 60 years, Deflecto has been committed to providing innovative new products for a variety of applications. Deflecto's expertise in reflective products further strengthens our leadership position and allows us to offer more product choices and bring better value and service to our customers.

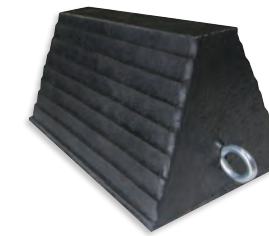


## TABLE OF CONTENTS



### **MUD FLAPS** ..... 4

We offer an extensive selection of high-quality mud flaps made for heavy-duty trucks, trailers and commercial vehicles. Deflecto mud flaps are available in a variety of quality materials, sizes and colors that can be easily customized with your logo.



### **SAFETY CHOCKS** ..... 11

Our chocks are made from rubber tire compounds reinforced with nylon and polyester fabric. Designed to resist abrasion, their elasticity and impact absorption provide excellent protection for vehicles.



### **WARNING TRIANGLES** ..... 12

Be seen and stay safe with warning triangles that meet or exceed DOT standard FMVSS-125. Bright fluorescent orange ABS plastic frames and red acrylic reflectors are highly visible - day or night. Weighted, non-skid bases provide stability, and triangles feature a folding design for easy storage.



### **REFLECTORS & LENSES** ..... 14

Deflecto is a leading manufacturer of reflectors, lenses and warning devices used in transportation, consumer & commercial applications. Our products meet multi-industry standards including those established by the Department of Transportation and the Society of Automotive Engineers.

No returns will be accepted without prior written approval by Deflecto Customer Service Department. An RMA number is required.



# MUD FLAPS

We offer an extensive selection of high-quality mud flaps made for heavy-duty trucks, trailers and commercial vehicles.



## PROFLEX MUD FLAPS

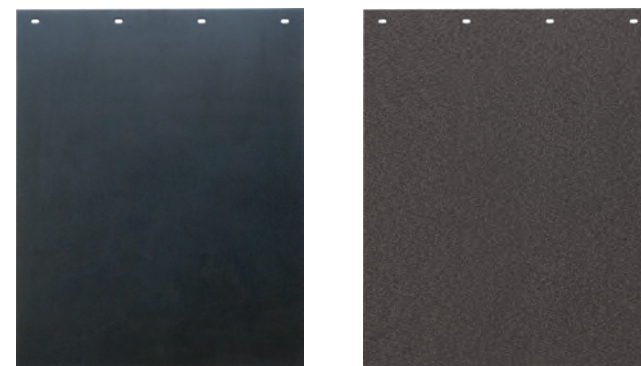


PROFLEX flaps are made from a unique hybrid of recycled, reclaimed rubber that provides the best combination of strength and flexibility. PROFLEX flaps are well-suited for hot-stamping or logo art.

### .150 Gauge

#### .150 GAUGE PROFILE

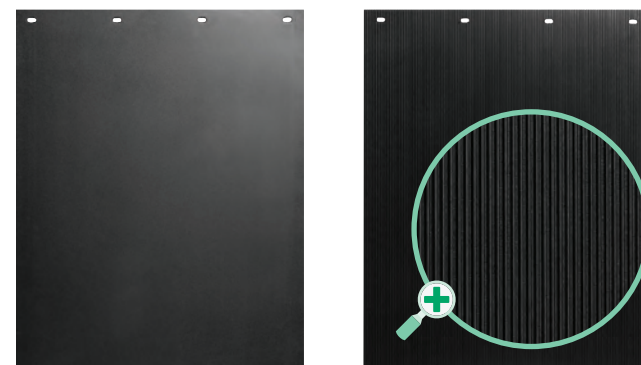
PART NO.	DESCRIPTION	DIMENSIONS	LBS EACH
AE2424	Matte/PG	24" x 24"	3.4
AE2426	Matte/PG	24" x 26"	3.7
AE2428	Matte/PG	24" x 28"	4.0
AE2430	Matte/PG	24" x 30"	4.2
AE2436	Matte/PG	24" x 36"	5.0



### 1/4"

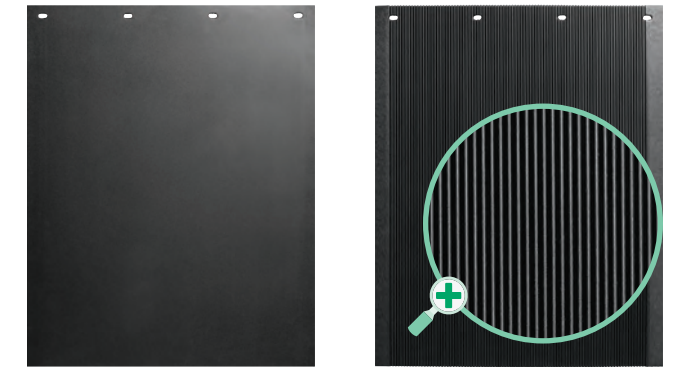
#### 1/4" PROFILE

PART NO.	DESCRIPTION	DIMENSIONS	LBS EACH
002424	Matte/GRS	24" x 24"	4.3
002426	Matte/GRS	24" x 26"	4.7
002428	Matte/GRS	24" x 28"	5.0
002430	Matte/GRS	24" x 30"	5.3
002436	Matte/GRS	24" x 36"	6.4



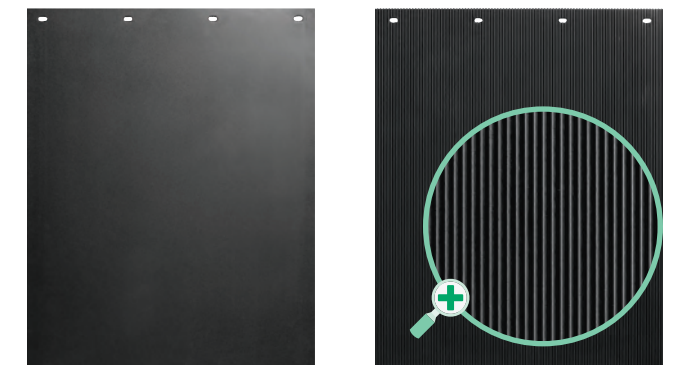
#### .320 GAUGE PROFILE

PART NO.	DESCRIPTION	DIMENSIONS	LBS EACH
372424	Matte/SB	24" x 24"	4.2
372426	Matte/SB	24" x 26"	4.5
372428	Matte/SB	24" x 28"	4.9
372430	Matte/SB	24" x 30"	5.2
372436	Matte/SB	24" x 36"	6.2



#### 3/8" PROFILE

PART NO.	DESCRIPTION	DIMENSIONS	LBS EACH
382424	Matte/AS	24" x 24"	5.7
382426	Matte/AS	24" x 26"	6.2
382428	Matte/AS	24" x 28"	6.6
382430	Matte/AS	24" x 30"	7.0
382436	Matte/AS	24" x 36"	8.7

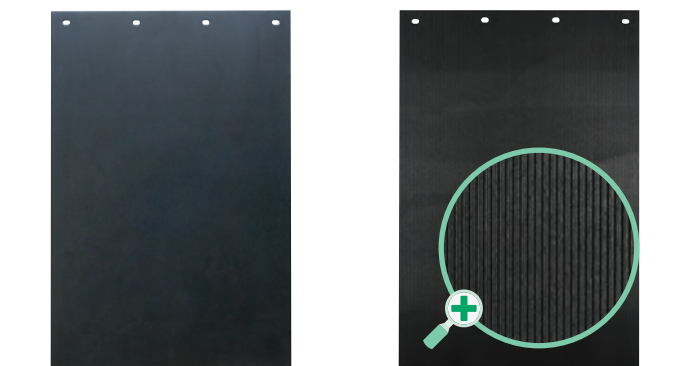


## PROFLEX SUPER SINGLES



#### 1/4" PROFILE

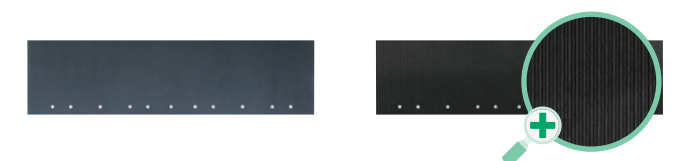
PART NO.	DESCRIPTION	DIMENSIONS	LBS EACH
002024	Matte/GRS	20" x 24"	3.4
002026	Matte/GRS	20" x 26"	3.6
002028	Matte/GRS	20" x 28"	3.9
002030	Matte/GRS	20" x 30"	4.2
002036	Matte/GRS	20" x 36"	5.0



## PROFLEX RUBBER FENDER EXTENSIONS



PART NO.	DESCRIPTION	DIMENSIONS	LBS EACH
002406	1/4" Matte/GRS	24" x 6"	1.1
382406	3/8" Matte/GRS	24" x 6"	1.5



#### DESCRIPTION CODES

- **Matte/AS:** Matte finish front/anti-spray back
- **Matte/GRS:** Matte finish front/groove roll shallow back
- **Matte/PG:** Matte finish front/Pro Grip pattern back
- **HD:** Heavy duty
- **RC:** Rain channel
- **RP:** Recessed pebble
- **SB:** Support bar
- **SM:** Smooth

ISO 9001:2015 certified



# POLYPRO MUD FLAPS

Made from the highest quality polymeric materials and elastomeric resins, PolyPro mud flaps are alloyed to provide resistance to cracking and breaking under extreme conditions.

## POLYPRO SUPER SINGLES



### 3/16" PROFILE

PART NO.	DESCRIPTION	DIMENSIONS	LBS EACH
102424	Black Poly, Matte/Matte	24" x 24"	3.5
102426	Black Poly, Matte/Matte	24" x 26"	3.8
102428	Black Poly, Matte/Matte	24" x 28"	4.0
102430	Black Poly, Matte/Matte	24" x 30"	4.2
102436	Black Poly, Matte/Matte	24" x 36"	5.0
112424	White Poly, Matte/Matte	24" x 24"	3.5
112426	White Poly, Matte/Matte	24" x 26"	3.8
112428	White Poly, Matte/Matte	24" x 28"	4.0
112430	White Poly, Matte/Matte	24" x 30"	4.2
112436	White Poly, Matte/Matte	24" x 36"	5.0



### .320 GAUGE PROFILE

PART NO.	DESCRIPTION	DIMENSIONS	LBS EACH
302424	Black Poly, Matte/SB	24" x 24"	4.4
302426	Black Poly, Matte/SB	24" x 26"	4.8
302428	Black Poly, Matte/SB	24" x 28"	5.1
302430	Black Poly, Matte/SB	24" x 30"	6.4
302436	Black Poly, Matte/SB	24" x 36"	7.4
312424	White Poly, Matte/SB	24" x 24"	4.4
312426	White Poly, Matte/SB	24" x 26"	4.8
312428	White Poly, Matte/SB	24" x 28"	5.1
312430	White Poly, Matte/SB	24" x 30"	6.4
312436	White Poly, Matte/SB	24" x 36"	7.4



### 3/16" PROFILE

PART NO.	DESCRIPTION	DIMENSIONS	LBS EACH
102024	Black Poly, Matte/Matte	20" x 24"	2.9
102026	Black Poly, Matte/Matte	20" x 26"	3.1
102028	Black Poly, Matte/Matte	20" x 28"	3.4
102030	Black Poly, Matte/Matte	20" x 30"	3.6
102036	Black Poly, Matte/Matte	20" x 36"	4.3
112024	White Poly, Matte/Matte	20" x 24"	2.9
112026	White Poly, Matte/Matte	20" x 26"	3.1
112028	White Poly, Matte/Matte	20" x 28"	3.4
112030	White Poly, Matte/Matte	20" x 30"	3.6
112036	White Poly, Matte/Matte	20" x 36"	4.3



### 1/4" PROFILE

PART NO.	DESCRIPTION	DIMENSIONS	LBS EACH
802424	Black Poly, Matte/GRS	24" x 24"	3.7
802426	Black Poly, Matte/GRS	24" x 26"	4.0
802428	Black Poly, Matte/GRS	24" x 28"	4.3
802430	Black Poly, Matte/GRS	24" x 30"	4.6
802436	Black Poly, Matte/GRS	24" x 36"	5.5
812424	White Poly, Matte/GRS	24" x 24"	3.7
812426	White Poly, Matte/GRS	24" x 26"	4.0
812428	White Poly, Matte/GRS	24" x 28"	4.3
812430	White Poly, Matte/GRS	24" x 30"	4.6
812436	White Poly, Matte/GRS	24" x 36"	5.5



### 3/8" PROFILE

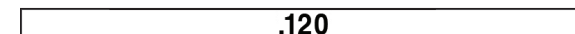
PART NO.	DESCRIPTION	DIMENSIONS	LBS EACH
202424	Black Poly, Matte/AS	24" x 24"	5.0
202426	Black Poly, Matte/AS	24" x 26"	5.4
202428	Black Poly, Matte/AS	24" x 28"	5.8
202430	Black Poly, Matte/AS	24" x 30"	6.2
202436	Black Poly, Matte/AS	24" x 36"	7.5
212424	White Poly, Matte/AS	24" x 24"	5.0
212426	White Poly, Matte/AS	24" x 26"	5.4
212428	White Poly, Matte/AS	24" x 28"	5.8
212430	White Poly, Matte/AS	24" x 30"	6.2
212436	White Poly, Matte/AS	24" x 36"	7.5



### 1/2" PROFILE

PART NO.	DESCRIPTION	DIMENSIONS	LBS EACH
502424	Black Poly, Matte/AS	24" x 24"	8.5
502430	Black Poly, Matte/AS	24" x 30"	9.4
502436	Black Poly, Matte/AS	24" x 36"	10.8

## POLYPRO FENDER EXTENSIONS



PART NO.	DESCRIPTION	DIMENSIONS	LBS EACH
402406	Black Poly, Matte/Matte	24" x 6"	0.8
412406	White Poly, Matte/Matte	24" x 6"	0.8



### DESIGN YOUR OWN MUD FLAPS

We're the leader in the custom mud flap industry. Let us turn your logo, business card, letterhead and other artwork into a custom design. Or, use our existing tools for trucks, trailers, dozers, cement & dump bodies.

Custom logo artwork tooling fees apply and costs vary depending on size & number of colors. There is a 50 piece minimum but no tooling fee or set-up charge when using hot-stamped block lettering.

"God Bless America" & "POW+MIA" mud flaps are examples, not stock items.



### CHOOSE YOUR FLAP COLOR



Colors available for both **DESIGN YOUR OWN** and **BLOCK LETTER** mud flaps.

\* Red, Royal Blue & Yellow for use with Poly GRS pattern only

### BLOCK LETTER OPTIONS

- 2" LETTERS - 16 characters per line
- 3" LETTERS - 12 characters per line
- 4" LETTERS - 10 characters per line
- Rounded corners and 45° angle cut available
- Can mix sizes and print colors
- Font: Swiss 924 with 0.75" spacing





# MOLDED RUBBER MUD FLAPS

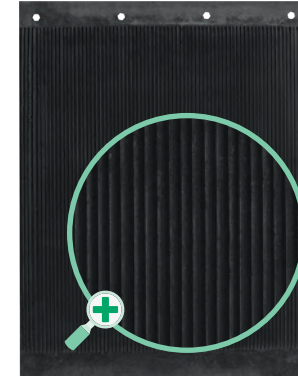
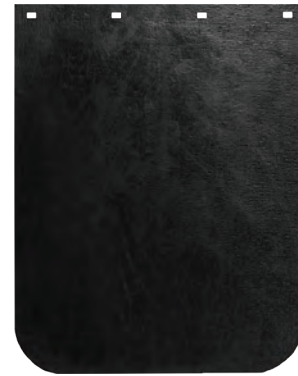
## CHEVRON 1/4" PROFILE

PART NO.	DESCRIPTION	DIMENSIONS	INSERT	BACKING	LBS EACH
AM2424	Chevron	24" x 24"	None	SM	4.9
AM2430	Chevron	24" x 30"	None	SM	5.5
AM2436	Chevron	24" x 36"	None	SM	6.6



## CHEVRON PEBBLE FINISH 1/4" PROFILE

PART NO.	DESCRIPTION	DIMENSIONS	INSERT	BACKING	LBS EACH
PB2424	Chevron	24" x 24"	None	RP	4.4
PB2430	Chevron	24" x 30"	None	RP	5.5
PB2436	Chevron	24" x 36"	None	RP	6.0



## HEAVY-DUTY 1/4" PROFILE

PART NO.	DESCRIPTION	DIMENSIONS	INSERT	BACKING	LBS EACH
APM24M	Rubber, HD	24" x 24"	20.5" x 19.5"	SM	4.8
APM30M	Rubber, HD	24" x 30"	20.5" x 19.5"	SM	6.0
APM36M	Rubber, HD	24" x 36"	20.5" x 19.5"	SM	7.3



## CHEVRON STEEL INSERT 5/16" PROFILE

PART NO.	DESCRIPTION	DIMENSIONS	INSERT	BACKING	LBS EACH
AM2424312SI	Chevron	24" x 24"	None	SM	5.8
AM2430312SI	Chevron	24" x 30"	None	SM	7.2
AM2436312SI	Chevron	24" x 36"	None	SM	8.7



## CHEVRON STEEL INSERT 3/8" PROFILE

PART NO.	DESCRIPTION	DIMENSIONS	INSERT	BACKING	LBS EACH
AM242438SI	Chevron	24" x 24"	None	SM	5.8
AM243038SI	Chevron	24" x 30"	None	SM	7.2
AM243638SI	Chevron	24" x 36"	None	SM	8.7

## RAIN CHANNEL ANTI-SPRAY 3/8" PROFILE

PART NO.	DESCRIPTION	DIMENSIONS	INSERT	BACKING	LBS EACH
SF24AS	Super flap	24" x 24"	20" x 20"	RC/AS	5.2
SF30AS	Super flap	24" x 30"	20" x 20"	RC/AS	7.4
SF36AS	Super flap	24" x 36"	20" x 20"	RC/AS	7.8

## HEAVY-DUTY 3/8" PROFILE

PART NO.	DESCRIPTION	DIMENSIONS	INSERT	BACKING	LBS EACH
APH24M	Rubber, HD	24" x 24"	20" x 20"	SM	6.5
APH30M	Rubber, HD	24" x 30"	20" x 20"	SM	8.0
APH36M	Rubber, HD	24" x 36"	20" x 20"	SM	9.5
APH40M	Rubber, HD	24" x 40"	20" x 20"	SM	11.1

## OPTIONAL DOT ANTI-SPRAY 1/2" PROFILE

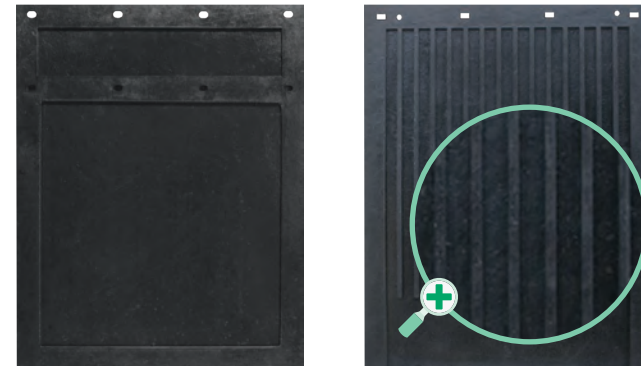
PART NO.	DESCRIPTION	DIMENSIONS	INSERT	BACKING	LBS EACH
APS24M	Rubber, HD	24" x 24"	20" x 20"	AS/DOT	7.8
APS30M	Rubber, HD	24" x 30"	20" x 20"	AS/DOT	10.0
APS36M	Rubber, HD	24" x 36"	20" x 20"	AS/DOT	12.2
APS40M	Rubber, HD	24" x 40"	20" x 20"	AS/DOT	14.0



## MOLDED RUBBER MUD FLAPS

### OPTIONAL RAIN CHANNEL ANTI-SPRAY 1/2" PROFILE

PART NO.	DESCRIPTION	DIMENSIONS	INSERT	BACKING	LBS EACH
APR24M	Rubber, HD	24" x 24"	20" x 20"	RC/AS	11.4
APR30M	Rubber, HD	24" x 30"	20" x 20"	RC/AS	13.6
APR36M	Rubber, HD	24" x 36"	20" x 20"	RC/AS	15.7



### RAIN CHANNEL ANTI-SPRAY 1/2" PROFILE

PART NO.	DESCRIPTION	DIMENSIONS	INSERT	BACKING	LBS EACH
SF24ASF450	Super flap	24" x 24"	20" x 20"	RC/AS	5.7
SF30ASF450	Super flap	24" x 30"	20" x 20"	RC/AS	7.4
SF36ASF450	Super flap	24" x 36"	20" x 20"	RC/AS	8.6



### EXTRA HEAVY-DUTY 1/2" PROFILE

PART NO.	DESCRIPTION	DIMENSIONS	INSERT	BACKING	LBS EACH
APSM24	Rubber, HD	24" x 24"	20" x 20"	SM	9.2
APSM30	Rubber, HD	24" x 30"	20" x 20"	SM	12.0
APSM36	Rubber, HD	24" x 36"	20" x 20"	SM	14.3
APSM40	Rubber, HD	24" x 40"	20" x 20"	SM	15.4

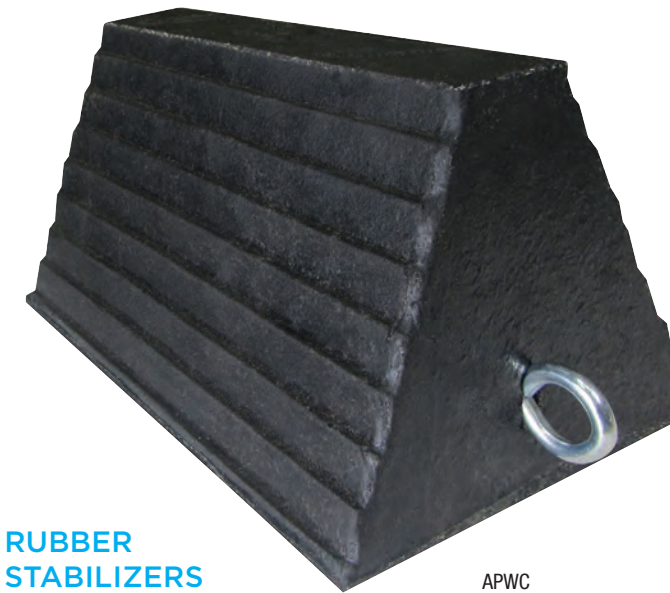


## SAFETY CHOCKS

Our chocks are made from rubber tire compounds reinforced with nylon and polyester fabric. Designed to resist abrasion, their elasticity and impact absorption provide excellent protection for vehicles.

### WHEEL CHOCKS

PART NO.	DESCRIPTION	DIMENSIONS
APWC	Safety chock with eyebolt hardware	6" x 8" x 10"
LNCF	Low profile safety chock	9.75" x 8" x 5"
APWF	Wedge chock with rubber molded handle	7.25" x 9.75" x 8"



### RUBBER STABILIZERS

Not hollow like the other brands



LNCF

APWF





# WARNING TRIANGLES

Be seen and stay safe with warning triangles that meet or exceed DOT standard FMVSS-125. Bright fluorescent orange ABS plastic frames and red acrylic reflectors are highly visible - day or night. Weighted, non-skid bases provide stability, and triangles feature a folding design for easy storage.

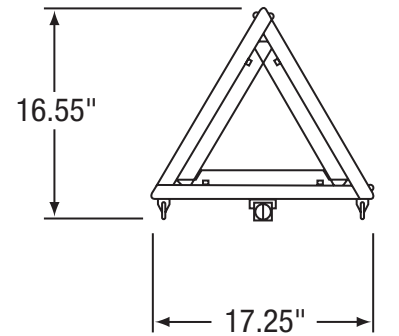


Easy open, easy close latch

## EMERGENCY WARNING TRIANGLE KIT

PART NO.	DESCRIPTION	DIMENSIONS	QTY
73-0711-00	Kit* in cardboard shipper	17.25"W x 16.55"H	144/Pallet
73-0711-40	4 Kits* in carton	17.25"W x 16.55"H	144/Pallet
73-0711-41	Kit* (no shipper)	17.25"W x 16.55"H	160/Pallet

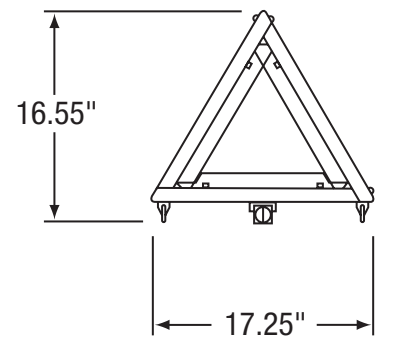
\* Kit = 3 triangles in red plastic box



## SINGLE WARNING TRIANGLE

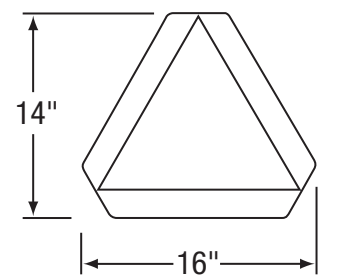
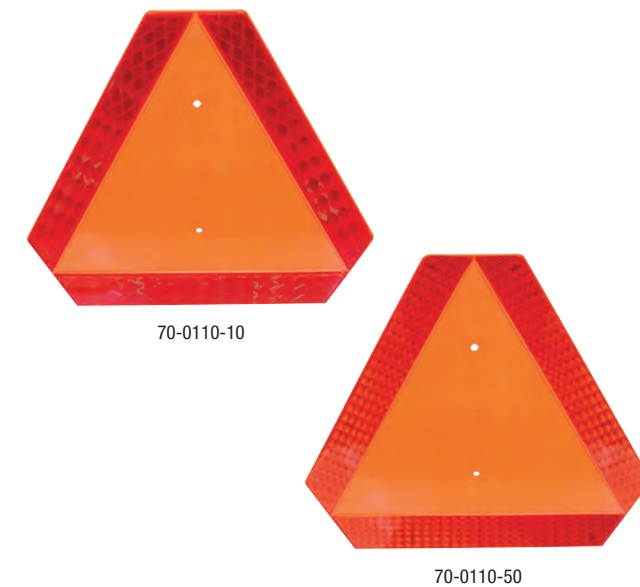
PART NO.	DESCRIPTION	DIMENSIONS	QTY
71-0711-12	Bulk 500 / Gaylord*	17.25"W x 16.55"H	500/Gaylord

\* No box included



## SLOW MOVING VEHICLE SIGN

PART NO.	DESCRIPTION	DIMENSIONS	QTY
70-0110-10	Plastic reflector	16"W x 14"H	10/Ctn
70-0110-11	Plastic reflector	16"W x 14"H	6/Ctn
RSMVT	Plastic reflector, w/retail label & hang tab	16"W x 14"H	6/Ctn
70-0110-50	Reflective tape	16"W x 14"H	25/Ctn

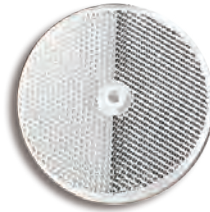




# REFLECTORS & LENSES

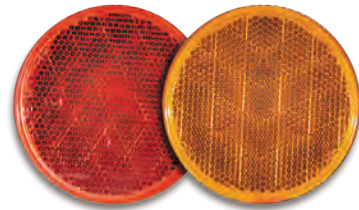
Deflecto is a leading manufacturer of reflectors, lenses and warning devices used in transportation, consumer and commercial applications. Our products meet multi-industry standards including those established by the Department of Transportation and the Society of Automotive Engineers.

## ROUND REFLECTORS



### ROUND HIGH INTENSITY DELINEATOR WITH CENTER HOLE

PART NO.	DESCRIPTION	DIMENSIONS	MOUNTING	COLOR
40-0035-20	Round high intensity delineator with center hole	3.25"	Center mounting hole; sealed to backer	Clear



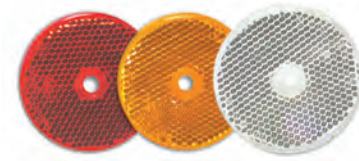
### ROUND SELF ADHESIVE

PART NO.	DESCRIPTION	DIMENSIONS	MOUNTING	COLOR
20-0030-01	Round self adhesive	3.25"	Self adhesive backer	Red
20-0030-02	Round self adhesive	3.25"	Self adhesive backer	Amber



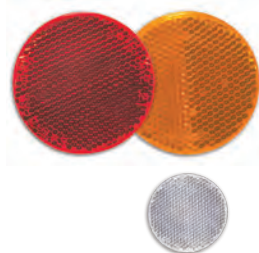
### ROUND SELF ADHESIVE WITH ALUMINUM BEZEL

PART NO.	DESCRIPTION	DIMENSIONS	MOUNTING	COLOR
70-0030-01	Round self adhesive	3"	Self adhesive backer	Red
70-0030-02	Round self adhesive	3"	Self adhesive backer	Amber



### ROUND WITH CENTER HOLE SEALED TO PLASTIC BACKER

PART NO.	DESCRIPTION	DIMENSIONS	MOUNTING	COLOR
40-0025-01	Round reflector sealed to plastic backer	2.1875"	With 0.25" center hole	Red
40-0025-02	Round reflector sealed to plastic backer	2.1875"	With 0.25" center hole	Amber
40-0026-00	Round reflector sealed to plastic backer	2.375"	With 0.25" center hole	Clear



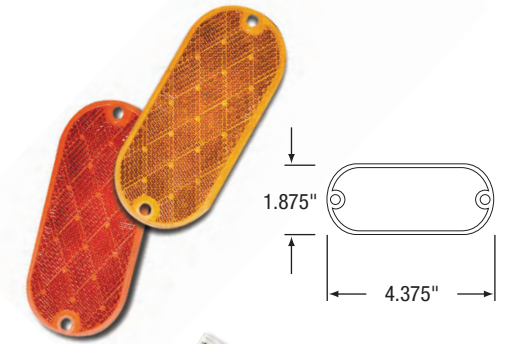
### ROUND SELF ADHESIVE

PART NO.	DESCRIPTION	DIMENSIONS	MOUNTING	COLOR
20-0020-01	Round reflector	2.1875"	Self adhesive backer	Red
20-0020-02	Round reflector	2.1875"	Self adhesive backer	Amber
20-0005-00	Round reflector	1.25"	Self adhesive backer	Clear

## OBLONG REFLECTORS

### OBLONG WITH TWO 3/16" HOLES

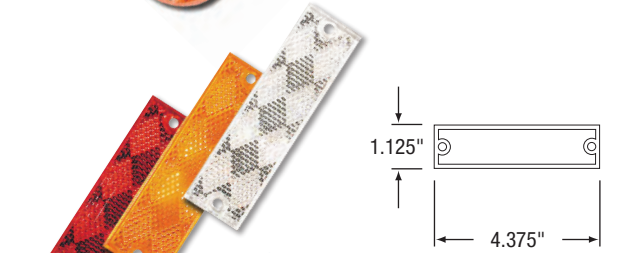
PART NO.	DESCRIPTION	DIMENSIONS	MOUNTING	COLOR
20-0024-01	Reflector	4.375"W x 1.875"H	Self-adhesive tape	Red
40-0024-01	Reflector	4.375"W x 1.875"H	Sealed to backer	Red
40-0024-02	Reflector	4.375"W x 1.875"H	Sealed to backer	Amber
60-0024-01	Reflector	4.375"W x 1.875"H	Sealed to backer with self-adhesive tape	Red
60-0024-02	Reflector	4.375"W x 1.875"H	Sealed to backer with self-adhesive tape	Amber



## RECTANGULAR REFLECTORS

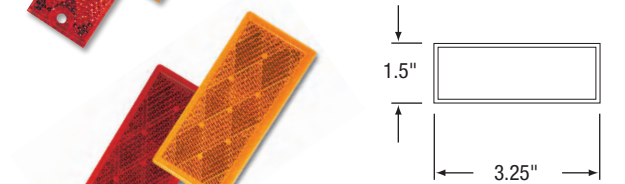
### SLIM LINE STRIP WITH TWO 3/16" HOLES

PART NO.	DESCRIPTION	DIMENSIONS	MOUNTING	COLOR
20-0004-01	Reflector	4.375"W x 1.125"H	Self-adhesive tape	Red
20-0004-02	Reflector	4.375"W x 1.125"H	Self-adhesive tape	Amber
40-0004-00	Reflector	4.375"W x 1.125"H	Sealed to backer	Clear



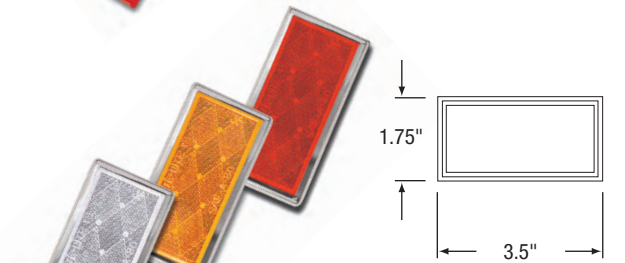
### RECTANGULAR

PART NO.	DESCRIPTION	DIMENSIONS	MOUNTING	COLOR
20-0015-01	Reflector	3.25"W x 1.5"H	Self-adhesive tape	Red
20-0015-02	Reflector	3.25"W x 1.5"H	Self-adhesive tape	Amber



### RECTANGULAR WITH BEZEL

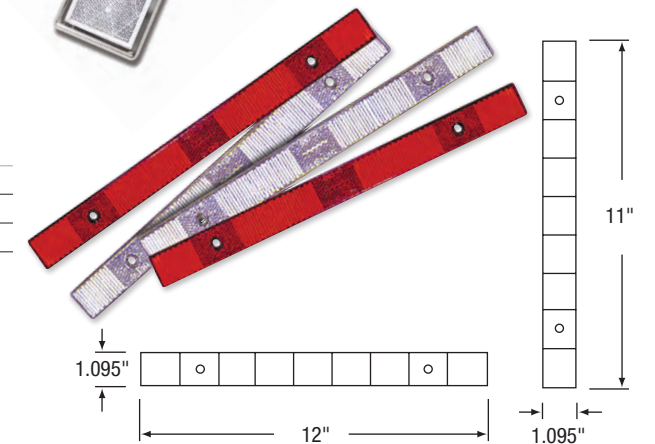
PART NO.	DESCRIPTION	DIMENSIONS	MOUNTING	COLOR
60-0015-00	Reflector with chrome bezel	3.5"W x 1.75"H	Self-adhesive tape	Clear
60-0015-01	Reflector with chrome bezel	3.5"W x 1.75"H	Self-adhesive tape	Red
60-0015-02	Reflector with chrome bezel	3.5"W x 1.75"H	Self-adhesive tape	Amber



### CONSPICUITY STRIPS WITH TWO MOUNTING HOLES

PART NO.	DESCRIPTION	DIMENSIONS	COLOR
60-0045-20	Rectangular horizontal conspicuity strips	12"W x 1.095"H	Clear
60-0045-21	Rectangular horizontal conspicuity strips	12"W x 1.095"H	Red
60-0045-30	Rectangular vertical conspicuity strips	1.095"W x 11"H	Clear

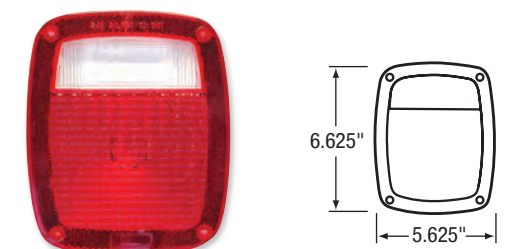
Mounting Options: Screw mount or self adhesive backer. Case pack quantity of 144. Meets or exceeds DOT-C and SAE J594F requirements for reflectivity markings of trucks and trailers.



## LENSES

### JEEP RED PILLOWED LENS

PART NO.	DESCRIPTION	DIMENSIONS
10-0257-20	Jeep red pillowed lens, acrylic	5.625" x 6.625"





deflecto®



SAFCAT

©2021 Deflecto LLC  
Indianapolis, IN  
800-428-4328  
deflecto.com