

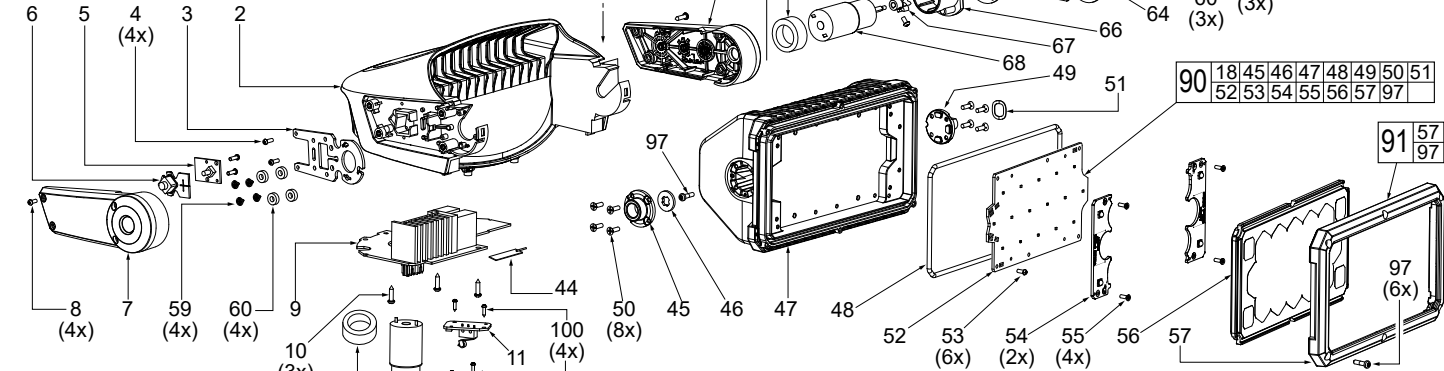


SERVICE PARTS LIST

BULLETIN NO.
54-06-9010

SPECIFY CATALOG NO. AND SERIAL NO. WHEN ORDERING PARTS		REVISED BULLETIN	DATE
M18™ LED Truck Mounted Light			Sept. 2021
CATALOG NO.	2123-20	STARTING SERIAL NO.	K73A
		WIRING INSTRUCTION See Pages 5-7	

FIG.	PART NO.	DESCRIPTION OF PART	NO. REQ.
1	45-60-0905	Support Housing-Left	(1)
2	42-92-3025	Top Cover	(1)
3	45-60-0906	Right Support for Heat Sink	(1)
4	06-82-9703	PB2.6 X 8mm Pan Hd. Torx Screw	(4)
5	22-06-0177	PCBA On-Off Button	(1)
6	45-06-1017	Waterproof Pad	(1)
7	45-60-0907	Support Cover-Right	(1)



EXAMPLE:
Component Parts (Small #) Are Included When Ordering Assembly (Large #)

SCREW TORQUE SPECIFICATION CHART ON PAGE 5

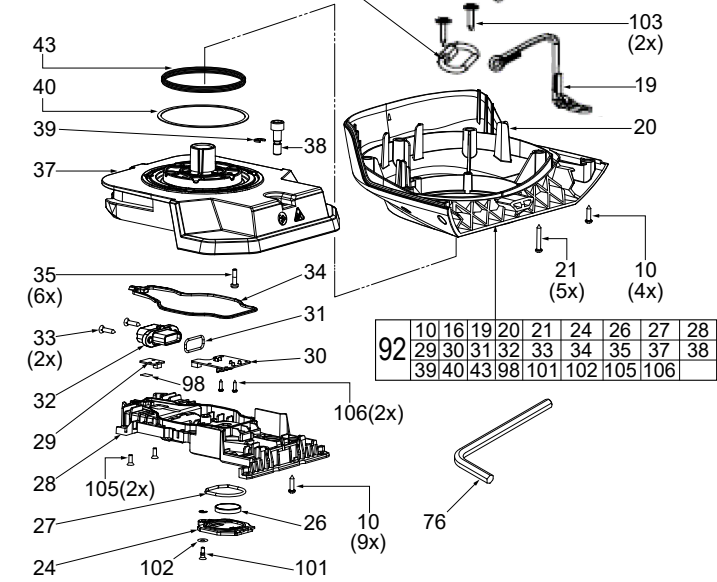


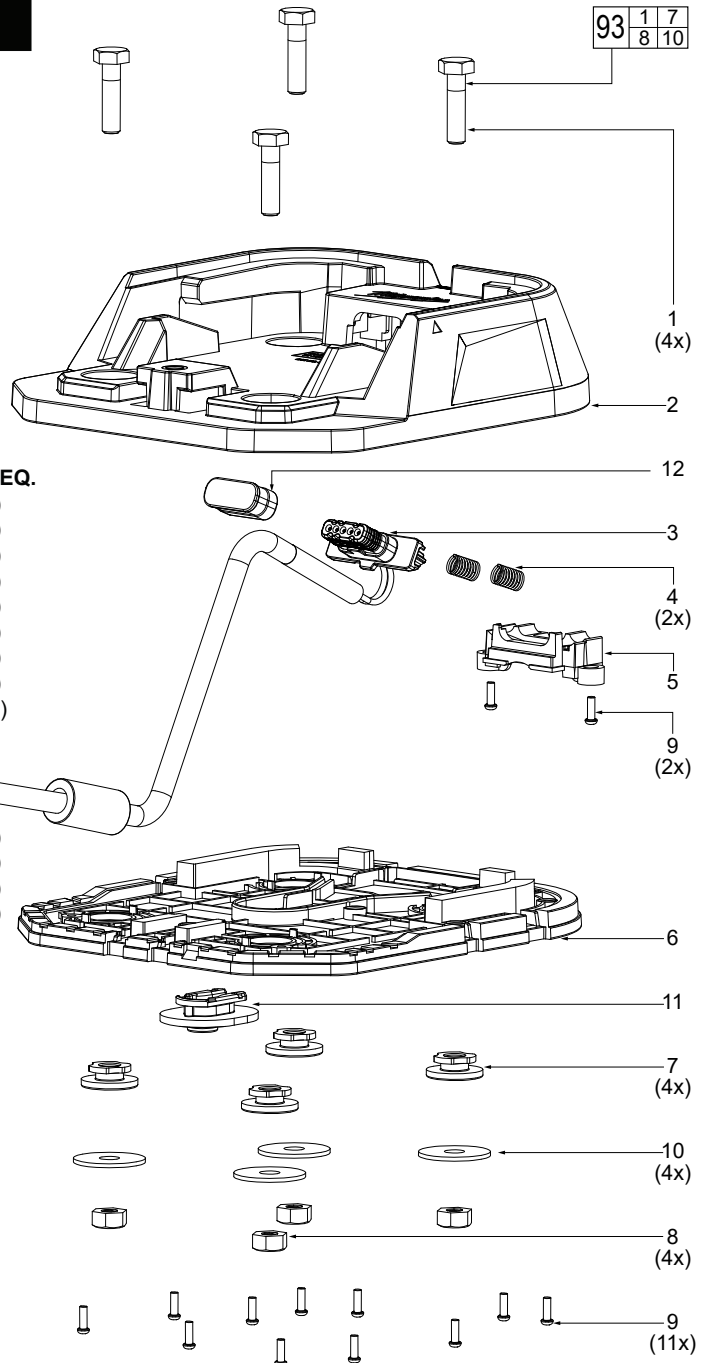
FIG.	PART NO.	DESCRIPTION OF PART	NO. REQ.
21	05-88-0151	PA3 x 20mm Pan Hd. Torx Screw	(5)
24	-----	Coin Cell Cover	(1)
26	-----	Coin Cell	(1)
27	-----	Coin Cell Cover Gasket	(1)
28	-----	Support Base Bottom Cover	(1)
29	-----	LED Indicator	(1)
30	-----	Coin Cell PCBA	(1)
31	-----	Male Connector Gasket	(1)
32	-----	Male Connector	(1)
33	05-88-0152	KA3 x 12mm Pan Hd. Torx Screw	(2)
34	-----	Support Base Gasket	(1)
35	05-88-0153	PM3 x 15mm Pan Hd. Torx Screw	(6)
37	-----	Support Base Top cover	(1)
38	05-88-0154	CM6 x 20mm Cap Hd. Socket Screw	(1)
39	-----	E-Ring	(1)
40	45-88-0221	Washer	(1)
41	22-54-0110	Ferrite Bead	(1)
42	14-46-8650	Embedded Tick	(1)
43	-----	Waterproof Ring-Top Body	(1)
44	22-06-0183	PCBA Antenna	(1)
45	-----	Connecting Shaft-Lamp Cable	(1)
46	-----	Heat Sink Wand Cover	(1)
47	-----	Heat Sink	(1)
48	-----	Lens Gasket	(1)
49	-----	Connecting Shaft-Head Lamp Gear	(1)
50	05-88-0155	KM3 x12mm Flat Hd. Torx Screw	(8)
51	-----	Wavy Washer	(1)
52	-----	Spot Lamp PCBA	(1)
53	05-88-0156	PM2.5 x 8mm Pan Hd. Torx Screw	(6)
54	-----	Flood Lamp PCBA	(2)
55	05-88-0157	KM2.5 x 8mm Flat Hd. Torx Screw	(4)
56	-----	TML Optic Lens	(1)
57	-----	Front Cover	(1)
58	06-82-9707	PA3 x 12mm Pan Hd. Torx Screw	(3)
59	06-82-9708	PWA2 x 5mm Pan Hd. w/Washer Screw	(7)
60	45-60-0909	Support Cushions	(1)
61	32-40-2322	Gear	(7)
62	32-40-2323	Gear	(1)
63	32-40-2324	Gear	(1)
64	45-60-0910	Left Support for Heat Sink	(1)
65	45-06-1019	Waterproof Pad	(1)
66	44-66-1377	Motor Holder	(1)
67	32-40-2325	Gear	(1)
68	23-30-0170	Motor	(2)
71	06-81-0022	M3 x 5mm Pan Hd. Screw	(4)
75	23-82-0025	Shrink Tube for Motor	(2)
76	49-96-0013	Hex Wrench	(1)
90	31-12-0056	Lamp Kit	(1)
91	42-92-0136	Front Cover Assembly	(1)
92	28-06-0015	Support Base Kit	(1)
97	06-81-0023	M3 x 8mm Pan Hd. Screw	(8)
98	-----	Double Sided Tape	(1)
100	06-81-0027	PWA x 7mm Torx Screw	(4)
101	05-88-0158	Flat Head Phillips Screw	(1)
102	42-70-0013	Ring Clip	(1)
103	06-81-0024	PWA3 x 15mm Pan hd. Torx Screw	(2)
104	22-56-0008	Teather Clasp	(1)
105	-----	KB2.6 x 8mm Screw	(4)
106	-----	PA2.0 x 8mm Screw	(2)

FIG.	PART NO.	DESCRIPTION OF PART	NO. REQ.
8	06-82-9704	PM2.5 x 8mm Pan Hd. Phillips Screw	(4)
9	22-06-0178	PCBA-Max	(1)
10	06-82-9705	PA3 x 12mm Pan Hd. Torx Screw	(7)
11	22-06-0179	PCBA-B	(1)
12	06-82-9706	M3 x 4mm Hex Socket Set Screw	(2)
13	32-40-2320	Gear	(1)
14	45-60-0908	Support for H Gear	(1)
15	42-28-0384	Limit Block	(1)
16	32-40-2321	Gear	(1)
17	45-06-1018	Waterproof Ring	(1)
18	22-56-0164	Teather Assembly-T	(1)
19	22-56-0165	Teather Assembly-B	(1)
20	42-92-3026	Bottom Cover	(1)

PERMANENT BASE ASSEMBLY

**SCREW TORQUE
SPECIFICATION
CHART ON PAGE 5**

FIG.	PART NO.	DESCRIPTION OF PART	NO. REQ.
1	06-14-0240	Hex Bolt	(4)
2	42-92-3023	Permanent Base-Top Cover	(1)
3	22-56-0161	Female Connector	(1)
4	40-50-8934	Spring	(2)
5	22-56-0162	Connector Bottom	(1)
6	42-92-3024	Permanent Base-Bottom Cover	(1)
7	44-52-1075	Permanent Base Foot Pad	(4)
8	06-55-3798	Hex Nut	(4)
9	06-82-9702	PB2.6 x 8mm Pan Hd. Torx Screw	(13)
10	05-90-0067	Flat Washer	(4)
11	43-44-8007	Permanent Base Cable Gasket	(1)
12	22-56-0163	Female Connector Jacket	(1)
93	14-46-0421	Permanent Base Service Kit	(1)



MAGNETIC BASE ASSEMBLY

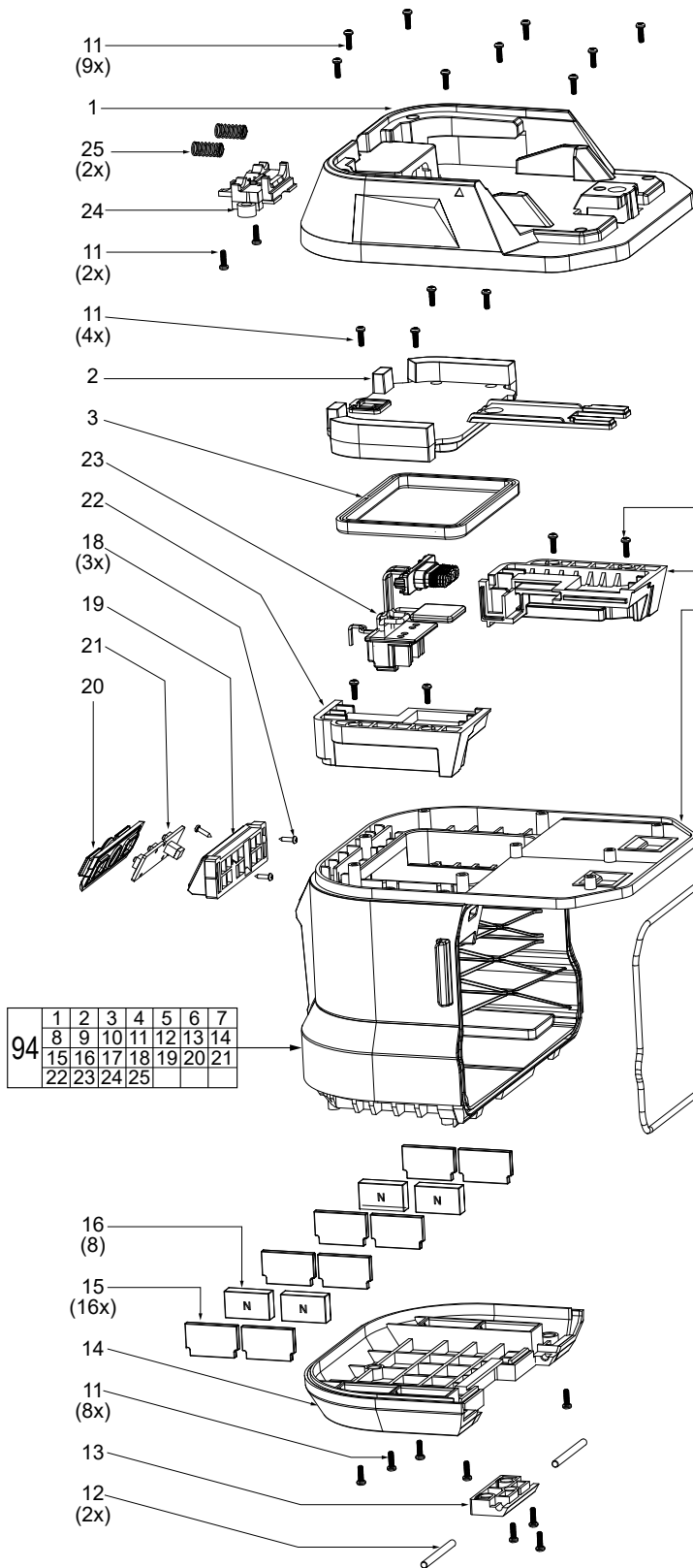


FIG.	PART NO.	DESCRIPTION OF PART	NO. REQ.
1	42-92-3020	Auxiliary Base-Top Cover	(1)
2	42-92-3021	Base Car Battery Cover	(1)
3	43-44-8005	Base Car Battery Gasket	(1)
4	42-20-0653	Battery Fit Base-Right	(1)
5	42-30-0153	Main Body Base	(1)
6	44-20-2535	Latch Clamp	(2)
7	42-68-0695	Latch	(2)
8	44-50-1455	Latch Pin	(2)
9	31-21-0237	Auxiliary Base-Battery Door	(1)
10	31-06-0220	Auxiliary Base-Battery Base Front	(1)
11	06-82-9700	PB2.6 x 8mm Pan Hd. Torx Screw	(33)
12	44-50-1456	Pin	(2)
13	42-28-0382	Hinge Block	(1)
14	31-06-0221	Auxiliary Base-Battery Base Rear	(1)

SCREW TORQUE SPECIFICATION CHART ON PAGE 5

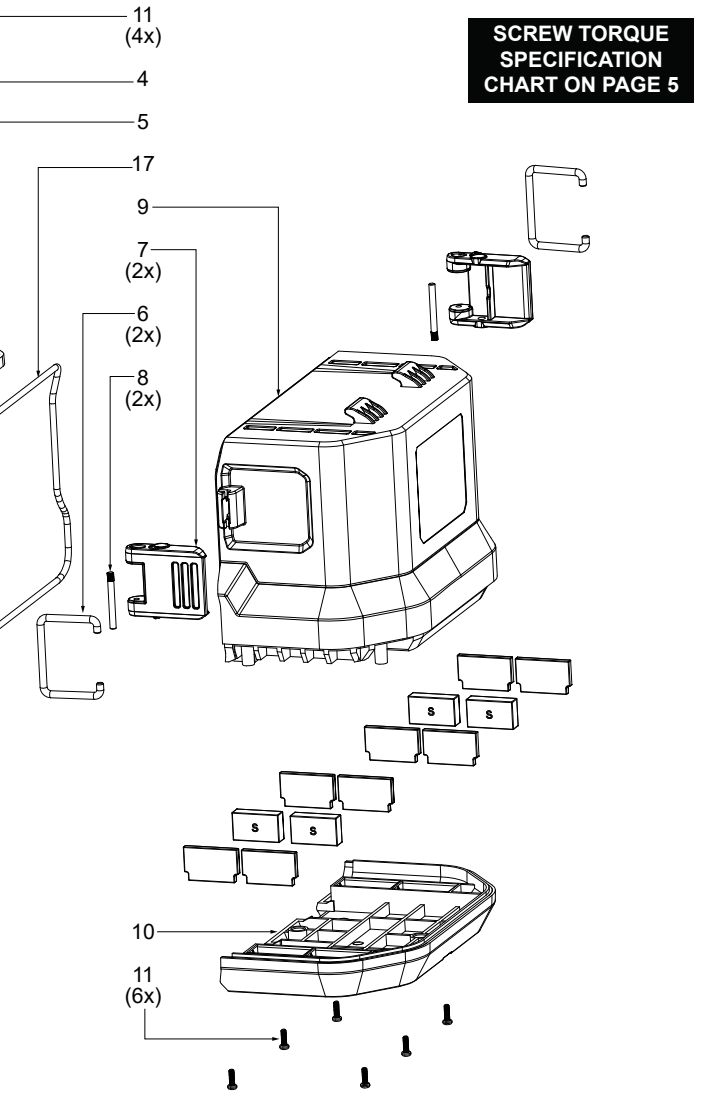
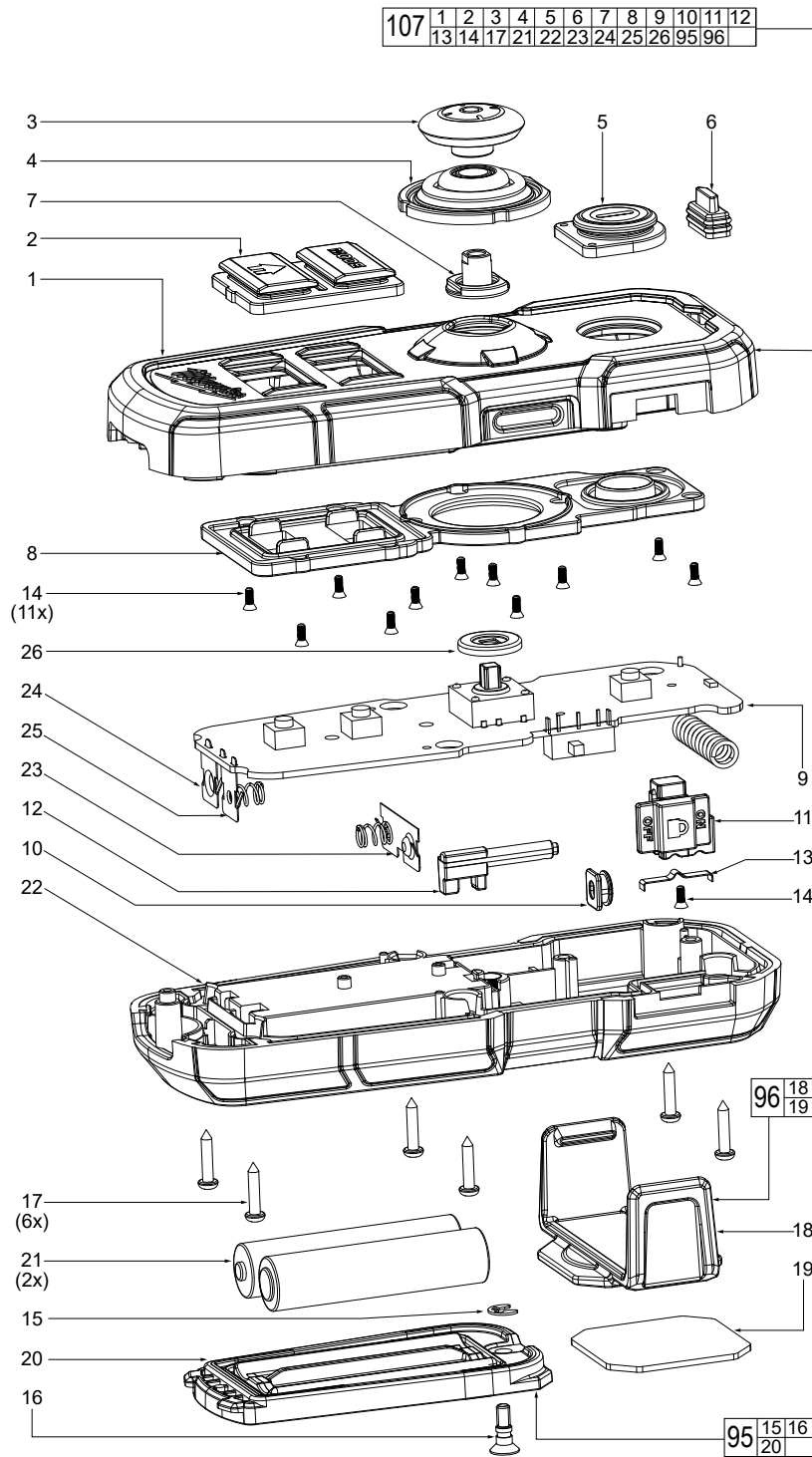


FIG.	PART NO.	DESCRIPTION OF PART	NO. REQ.
15	49-77-3005	Magnet Holder	(16)
16	44-26-0105	Magnet	(8)
17	43-44-8006	Main Body Gasket	(1)
18	06-82-9701	PA2 x 8mm Pan Hd. Torx Screw	(3)
19	42-92-3022	Button Cover	(1)
20	42-42-3050	Button	(1)
21	22-06-0176	Button PCBA	(1)
22	31-06-0222	Battery Fit Base-Left	(1)
23	42-28-0383	Battery Connector Block	(1)
24	31-06-0223	Connect Bottom Holder	(1)
25	40-50-8933	Spring	(2)
94	31-12-0067	Magnetite Base Assembly	(1)
	12-20-5405	Service Nameplate (Not Shown)	(1)



**SCREW TORQUE
SPECIFICATION
CHART ON PAGE 5**

REMOTE AND BRACKET

FIG.	PART NO.	DESCRIPTION OF PART	NO. REQ.	FIG.	PART NO.	DESCRIPTION OF PART	NO. REQ.
1	-----	Top Cover	(1)	17	-----	Screw	(6)
2	-----	Remote Button Cover	(1)	18	-----	Remote Bracket Base	(1)
3	-----	Handle	(1)	19	-----	Remote Base Adhesive Pad	(1)
4	-----	Remote Button Rubber	(1)	20	-----	Battery Door	(1)
5	-----	Power Button Cover	(1)	21	-----	AAA Battery	(2)
6	-----	Top Cover Lens	(1)	22	-----	Remote Back Cover	(1)
7	-----	Handle standoff	(1)	23	-----	Battery Spring	(1)
8	-----	Remote Button Support	(1)	24	-----	Positive Connector	(1)
9	-----	PCBA	(1)	25	-----	Negative Connector	(1)
10	-----	Rubber Switch Cover	(1)	26	-----	Pad	(1)
11	-----	Switch Cover-01	(1)	95	31-21-0238	Battery Door Service Assembly	(1)
12	-----	Switch Cover-02	(1)	96	14-46-0426	Bracket Service Kit	(1)
13	-----	Leaf Spring	(1)	107	22-80-0019	Remote Control Assembly	(1)
14	-----	Screw	(12)				
15	-----	E-Washer	(1)				
16	-----	Screw	(1)				

SCREW TORQUE SPECIFICATIONS

FIG.	PART NO.	DESCRIPTION OF FASTENER	WHERE USED	SEAT TORQUE	
				(KG/CM)	(lbf.in)
PAGE 1					
4	06-82-9703	PM2.5 X 8mm Pan Hd. Phillips Screw	Support for heat sink, PCBA of button	4.0-4.5	3.47-3.91
8	06-82-9704	PA2 x 8mm Pan Hd. Torx Screw	Support cover-right	3.0-3.5	2.60-3.04
10	06-82-9705	PA3 x 12mm Pan Hd. Torx Screw	Support cover-left and H gear, motor holder	4.5-5.0	3.91-4.34
10	06-82-9705	PA3 x 12mm Pan Hd. Torx Screw	Top cover to bottom cover	6.0-6.5	5.21-5.64
12	06-82-9706	M3 x 4mm Hex Socket Set Screw	Gear to motor	5.5-6.0	4.77-5.21
21	05-88-0151	PA3 x 20mm Pan Hd. Torx Screw	Top cover to bottom cover	6.0-6.5	5.21-5.64
33	05-88-0152	KA3 x 12mm Pan Hd. Torx Screw	Male connector	4.0-4.5	3.47-3.91
35	05-88-0153	PM3 x 15mm Pan Hd. Torx Screw	Support base cover / gear	8.0-8.5	6.94-7.38
38	05-88-0154	CM6 x 20mm Cap Hd. Socket Screw	Light housing to base	4.5-5.0	3.91-4.34
50	05-88-0155	KM3 x12mm Flat Hd. Torx Screw	Connecting shaft to heat sink	5.5-6.0	4.77-5.21
53	05-88-0156	PM5 x 8mm Torx Screw	Spot PCBA to heat sink	3.0-3.5	2.60-3.04
55	05-88-0157	KM2.5 x 8mm Flat Hd. Torx Screw	Flood PCBA to heat sink	4.0-4.5	3.47-3.91
59	06-82-9708	PWA2 x 5mm Pan Hd. w/Washer Screw	Support cushions	1.5-2.0	1.30-1.74
71	06-81-0022	M3 x 5mm Pan Hd. Screw	Motor	6.5-7.0	5.64-6.08
97	06-81-0023	M3 x 8mm Pan Hd. Screw	Front cover & teather to heat sink, gear	5.5-6.0	4.77-5.21
100	06-81-0027	M2 x 7mm PWA Screw	Embedded tick, PCBA B to cover	2.0-2.5	1.74-2.17
101	05-88-0158	Flat Head Phillips Screw	Coin cell cover	3.0-3.5	2.60-3.04
103	06-81-0024	PWA3 x 15mm Pan hd. Torx Screw	Ring clip for teather	5.0-5.5	4.34-4.77
105	-----	KB2.6 x 8mm Screw	Light base	3.0-3.5	2.60-3.04
106	-----	PA2.0 x 8mm Screw	Coin cell PCBA to cover	2.5-3.0	2.17-2.60
PAGE 2					
9	06-82-9702	PB2.6 x 8mm Pan Hd. Torx Screw	Permanent base top and bottom cover	4.0-4.5	3.47-3.91
PAGE 3					
11	06-82-9700	PB2.6 x 8mm Pan Hd. Torx Screw	Top cover, battery cover, battery fit bases, battert rear base, battery front base	4.0-4.5	3.47-3.91
18	06-82-9701	PA2 x 8mm Pan Hd. Torx Screw	Base car button PCBA, base car button cover	2.5-3.0	2.17-2.60
PAGE 4					
16	-----	KBM2.5 x 9mm Phillips Screw	Battery cover	2.0-2.5	1.74-2.17

