

74 22 200

High Leverage Diagonal Cutter



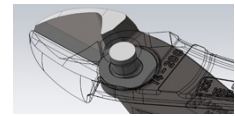
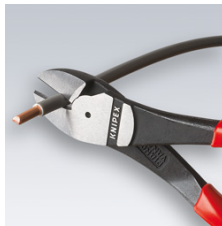
- for very tough, continuous use
- high cutting performance with minimum effort due to optimum co-ordination of the cutting edge angle and transmission ratio
- precision cutting edges additionally induction hardened (cutting edge hardness approx. 64 HRC), for all sorts of wire including piano wire
- Chrome vanadium heavy-duty steel, forged, oil-hardened
 - Style: 12° angled head offers clearance for gripping

20 % less effort required

compared to conventional diagonal cutters of the same length.

With integrated forged joint axle.

Article No.	74 22 200
EAN	4003773051831
Pliers	black atramentized
Head	polished
Handles	with multi-component grips
Style	2
medium hard wire Ø mm	4,2
hard wire Ø mm	3,0
piano wire Ø mm	2,5
Dimensions angle °	12
Length mm	200
Net weight g	300



With integrated forged joint axle for very tough, continuous use

technical change and errors excepted

