

# 74 12 180

## High Leverage Diagonal Cutter



- for very tough, continuous use
- high cutting performance with minimum effort due to optimum co-ordination of the cutting edge angle and transmission ratio
- precision cutting edges additionally induction hardened (cutting edge hardness approx. 64 HRC), for all sorts of wire including piano wire
- Chrome vanadium heavy-duty steel, forged, oil-hardened
  - Style: with opening spring; to be activated if required

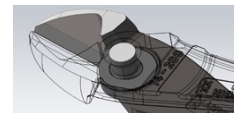
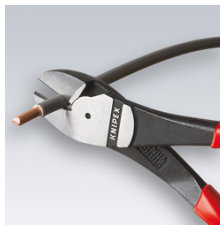


### 20 % less effort required

compared to conventional diagonal cutters of the same length.

With integrated forged joint axle.

<b>Article No.</b>	74 12 180
<b>EAN</b>	4003773060192
<b>Pliers</b>	black atramentized
<b>Head</b>	polished
<b>Handles</b>	with multi-component grips
<b>Style</b>	1
<b>medium hard wire Ø mm</b>	3,8
<b>hard wire Ø mm</b>	2,7
<b>piano wire Ø mm</b>	2,2
<b>Length mm</b>	180
<b>Net weight g</b>	273



With integrated forged joint axle for very tough, continuous use



74 12: opening spring in deactivated position

74 12: just gentle sliding with your thumb will activate the opening spring

*technical change and errors excepted*

