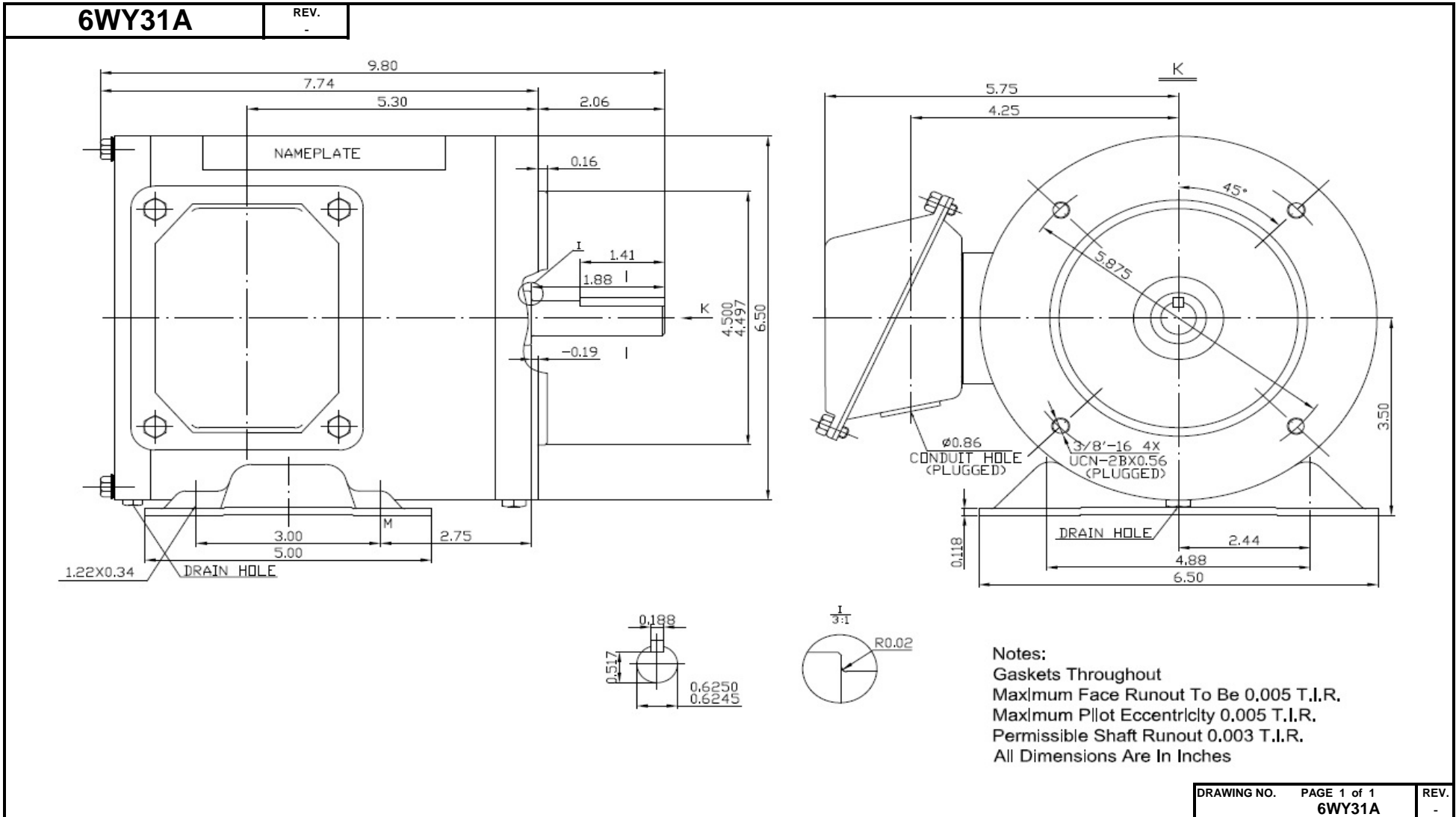


Dimensional Drawing



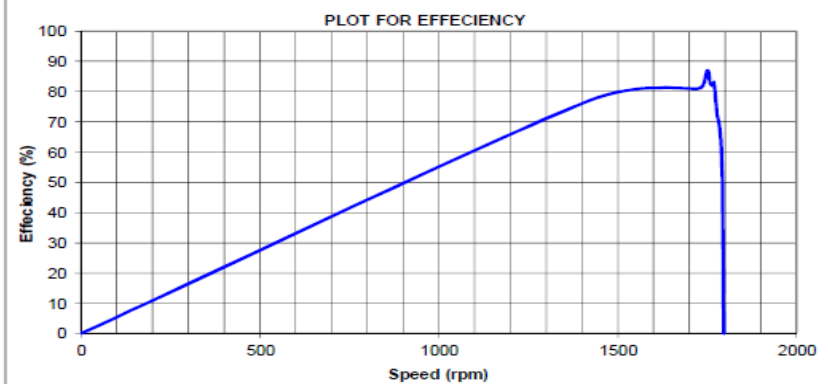
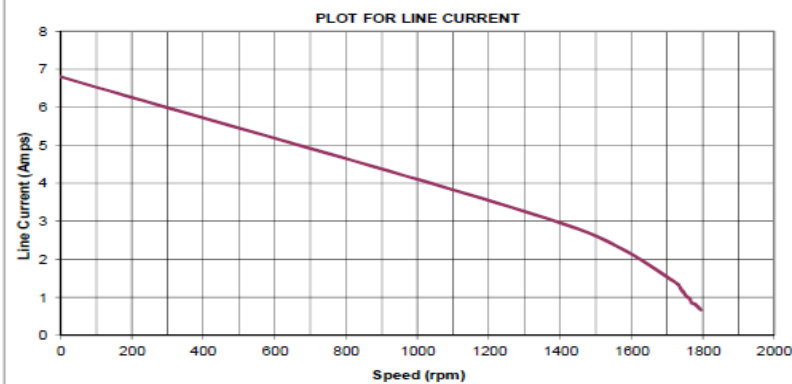
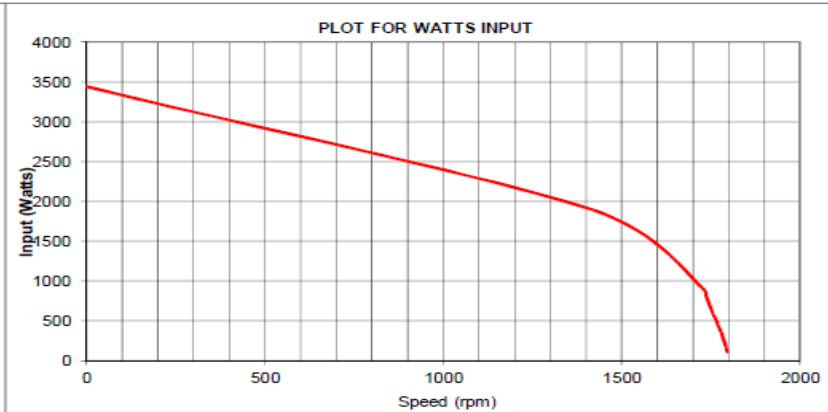
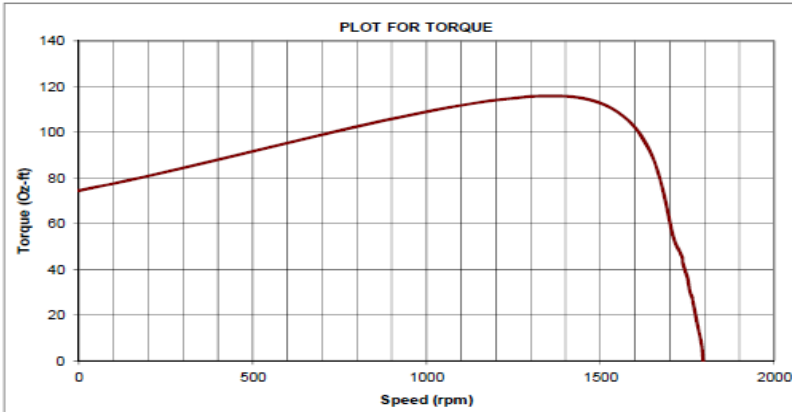
Dayton Electric Mfg. Co. Lake Forest, IL 60045 USA

Performance Data



6WY31A

REV.
-



Model No: 6WY31A Curve at 460 Volts , 60Hz, 1/2HP, 1745 RPM

| | | |
|------------------|-------|-------|
| Full load torque | 23.7 | Oz-ft |
| BD Torque | 115.6 | Oz-ft |
| LR Torque | 74.5 | Oz-ft |

| | | |
|----------------|------|-------|
| Full load Amps | 0.85 | Amps |
| PU Torque | 55 | Oz-ft |
| LR AMPS @ 460' | 6.8 | Amps |

| | | |
|-------------|-------------|------|
| DRAWING NO. | PAGE 1 of 2 | REV. |
| | 6WY31A | - |

Dayton Electric Mfg. Co. Lake Forest, IL 60045 USA

Performance Data



| 6WY31A | | REV. - | | | | | | | | |
|-------------|-------|-----------|----------|---------|--------------|----------------|------------|------------|------------|--|
| | Speed | Torque | Watts In | Current | Power Factor | Capacitor Volt | Efficiency | Watts Loss | Motor Mode | |
| No load | 1796 | 0 | 110 | 0.67 | 20 | | 0 | 110 | 0 | |
| | 1792 | 5.8 | 175 | 0.69 | 30 | | 53 | 82 | 0.25 | |
| | 1785 | 11.8 | 274 | 0.76 | 42 | | 68 | 88 | 0.5 | |
| | 1777 | 17.6 | 380 | 0.83 | 53 | | 73 | 101 | 0.75 | |
| Full load | 1769 | 23.7 | 450 | 0.85 | 64 | | 83 | 77 | 1 | |
| | 1764 | 27.6 | 520 | 0.95 | 69 | | 82 | 92 | 1.15 | |
| | 1758 | 30.1 | 564 | 1.01 | 70 | | 83 | 98.00 | 1.25 | |
| | 1751 | 36 | 645 | 1.07 | 75 | | 87 | 86 | 1.5 | |
| | 1738 | 42.2 | 795 | 1.23 | 80 | | 82 | 145 | 1.75 | |
| | 1725 | 48.7 | 918 | 1.38 | 83 | | 81 | 172 | 2 | |
| Break Down | 1420 | 115.6 | 1892 | 2.9 | 82 | | 77 | 435 | BD | |
| Locked Roto | 0 | 74.5 | 3440 | 6.8 | 63 | | 0 | 3440 | LR | |

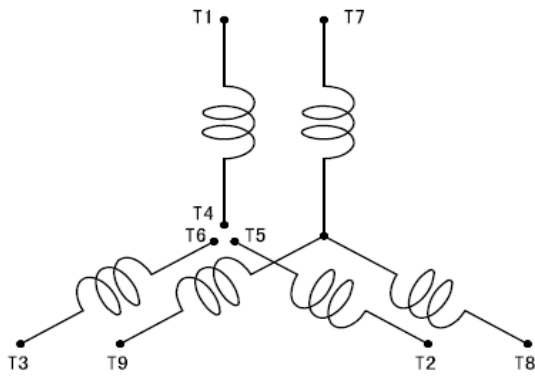
| | | |
|-------------|-------------|------|
| DRAWING NO. | PAGE 2 of 2 | REV. |
| 6WY31A | | - |

6WY31A

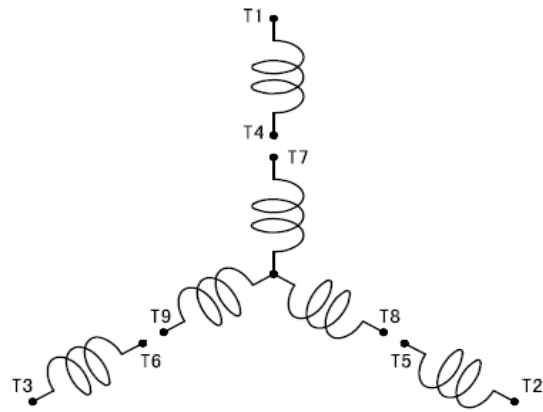
REV.
0

SCHEMATIC

LOW VOLT 2Y

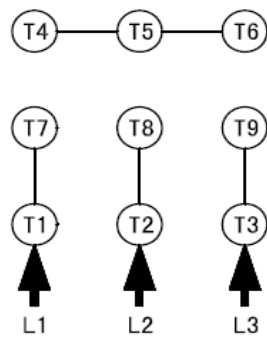


HIGH VOLT Y

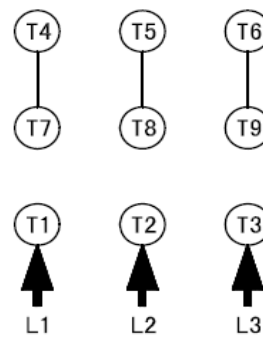


CONNECTION

LOW VOLT 2Y



HIGH VOLT Y



DRAWING NO. PAGE 1 of 1 REV.
6WY31A 0