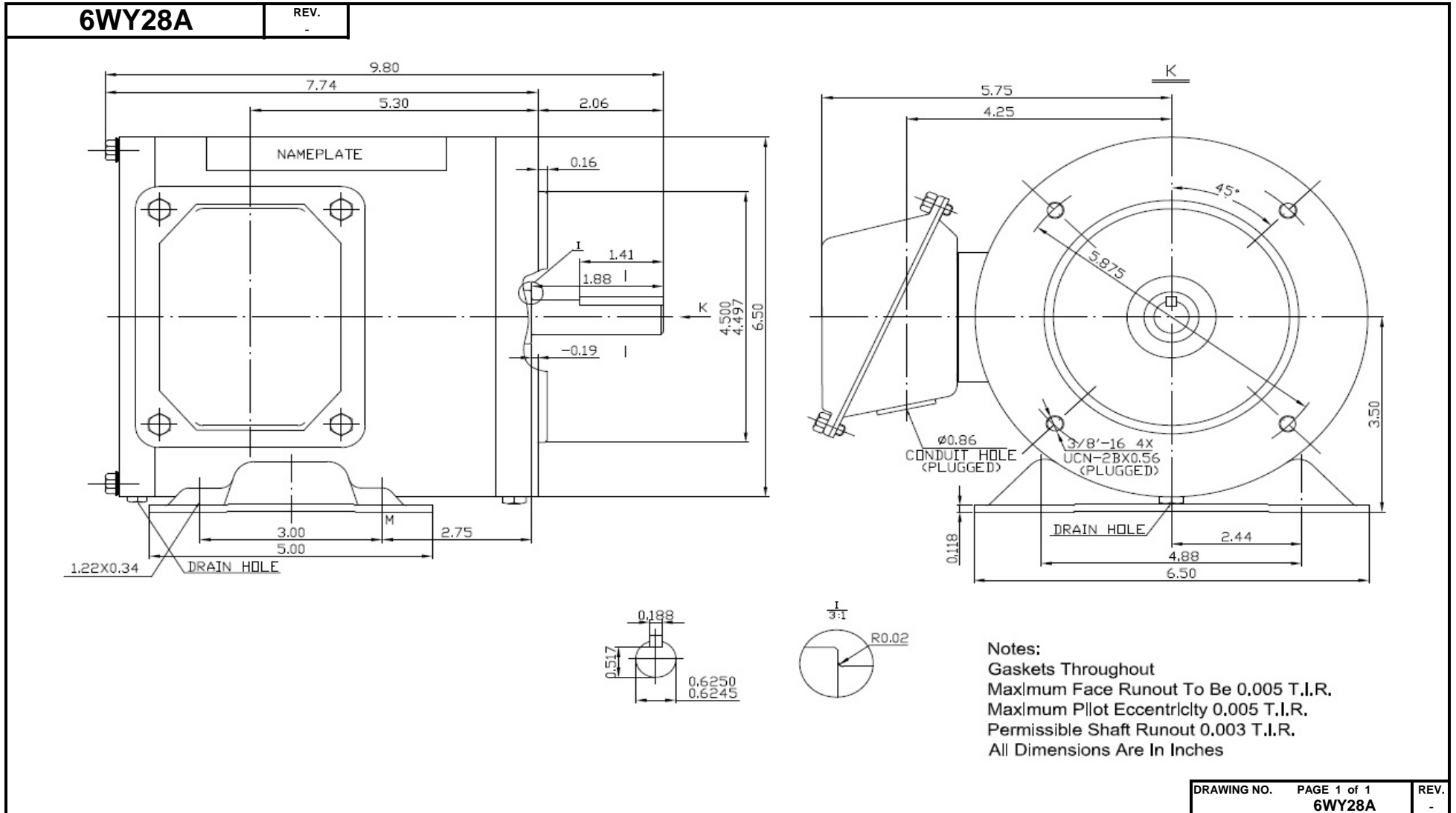


Dimensional Drawing

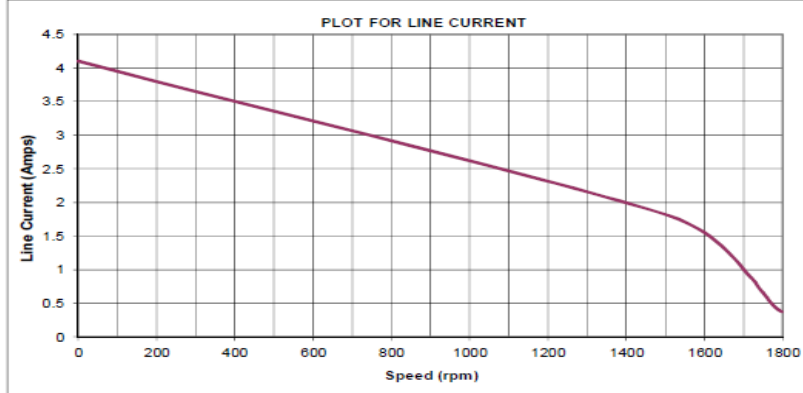
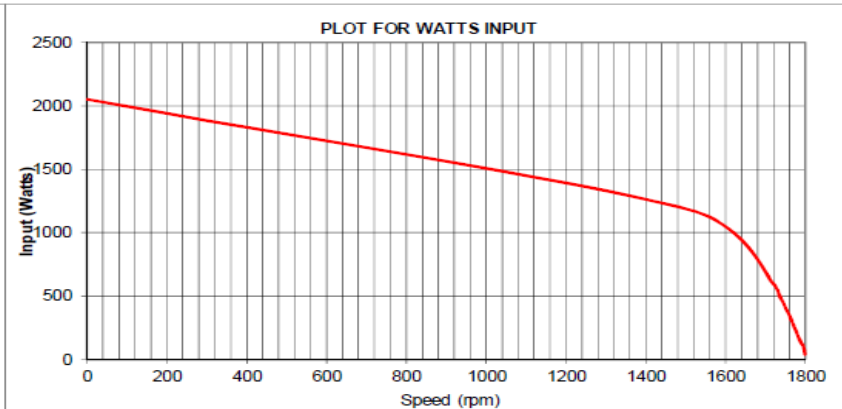
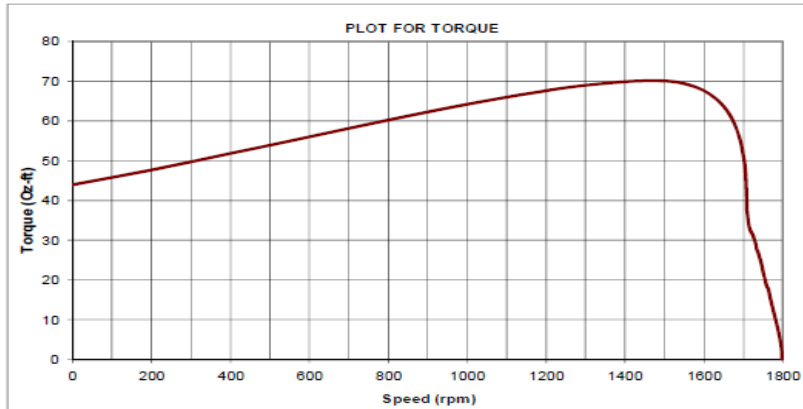


Performance Data



6WY28A

REV.
-



Model No: 6WY28A Curve at 460 Volts , 60Hz, 1/2HP, 1745 RPM

Customer:

Full load torque	15.6 Oz-ft
BD Torque	70.0 Oz-ft
LR Torque	44 Oz-ft

Full load Amps	0.52 Amps
PU Torque	40 Oz-ft
LR AMPS @ 460	4.1 Amps

DRAWING NO.	PAGE 1 of 2	REV.
	6WY28A	-

Dayton Electric Mfg. Co. Lake Forest, IL 60045 USA

Performance Data



6WY28A		REV. -								
	Speed	Torque	Watts In	Current	Power Factor	Capacitor Volt	Efficiency	Watts Loss	Motor Mode	
No load	1798	0	38	0.37	13		0	38	0	
	1795	3.9	100	0.38	33		62	38	0.25	
	1787	7.9	143	0.41	43		86	20	0.5	
	1777	11.7	218	0.46	58		84.4	34	0.75	
Full load	1768	15.6	285	0.52	68		86.3	39	1	
	1763	17.9	323	0.55	72		87.6	40	1.15	
	1759	18.3	352	0.59	75		87.2	45	1.25	
	1746	23.7	434	0.68	80		85	65	1.5	
	1734	27.8	508	0.77	83		84.6	78	1.75	
	1719	32.2	598	0.88	85		82.3	106	2	
Break Down	1510	70	1180	1.8	82		79.5	242	BD	
Locked Rotor	0	44	2052	4.1	63		0	2052	LR	

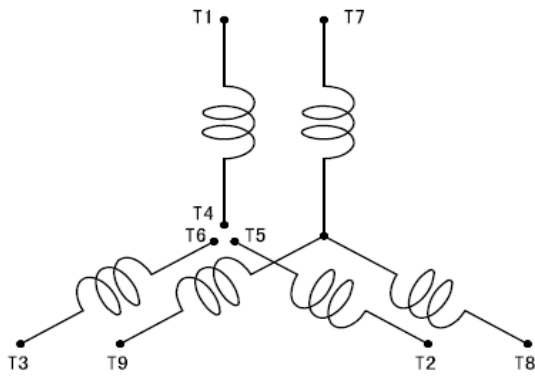
DRAWING NO.	PAGE 2 of 2	REV.
6WY28A		-

6WY28A

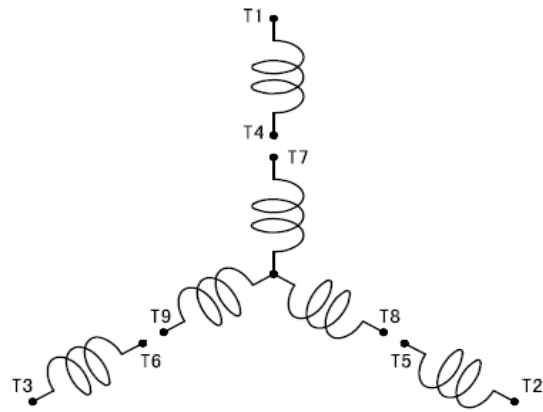
REV.
0

SCHEMATIC

LOW VOLT 2Y

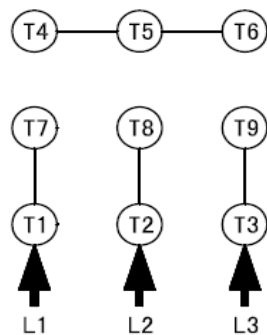


HIGH VOLT Y

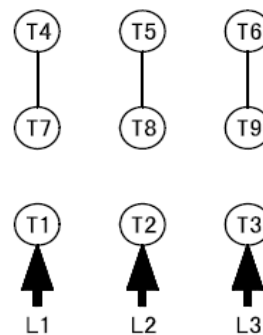


CONNECTION

LOW VOLT 2Y



HIGH VOLT Y



DRAWING NO.	PAGE 1 of 1	REV.
6WY28A		0