

# Palmer

## Gas Test Gauges - 40KBDLA6#/12"Hg, 40KBDLA15#/30"Hg, 40KBDLA30#/60"Hg

### FEATURES

- Class 1A Accuracy
- Equipped with Set Hand
- Hex Body and Schrader Air Valve
- Solid Brass Internal Body
- 4" (100mm) Painted Black Steel Case
- Dual Scale (PSI-Outer/Inches of Hg-Inner) in Dual Color
- Measures in 1/10th lb increments, 1/2" Hg increment (6psi/12"Hg, 15psi/30"Hg)
- Measures in 1/5th lb increments, 1" Hg increment (30psi/60"Hg)
- Internal Overpressure Protection Device
- Phosphor Bronze Diaphragm
- Heavy Duty Gear Movement
- Heavy Duty Construction
- Environmentally-Safe Alternative to Mercury Column

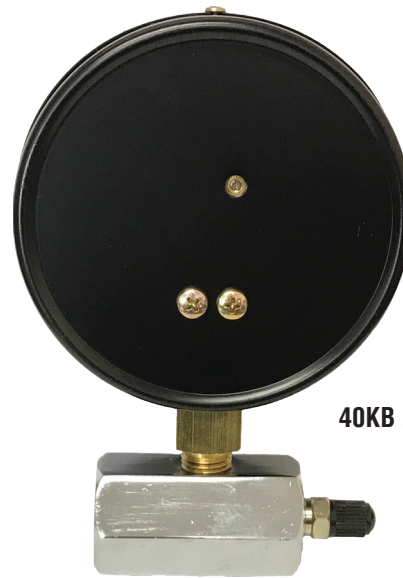
### SPECIFICATIONS

Case:	Painted Black Steel. 4" (100 mm) diameter.
Fill:	Dry
Ring:	Painted Black Stainless Steel with Bayonet Ring.
Window:	Plastic.
Socket:	Lower Connected Brass Valve Hex Body with Schrader Valve.
Connection:	3/4" NPT Process Connection.
Accuracy:	± 1%
Bourdon Tube:	Phosphor Bronze Diaphragm Internals.
Movement:	Heavy Duty Gear Movement.
Pointer:	Set Pointer for Leak Off. Set hand.
Dial:	Dual Scale, White Background, PSI-Outer Scale Black Lettering, Inches of Hg-Inner Scale Blue Lettering.
Range Availability:	6#/12Hg, 15#/30Hg, 30#/60Hg
Ambient Operating Range:	-4° to 160 °F (-20° to -60°C).

Specifications subject to change without notice.



40KB Front



40KB Back

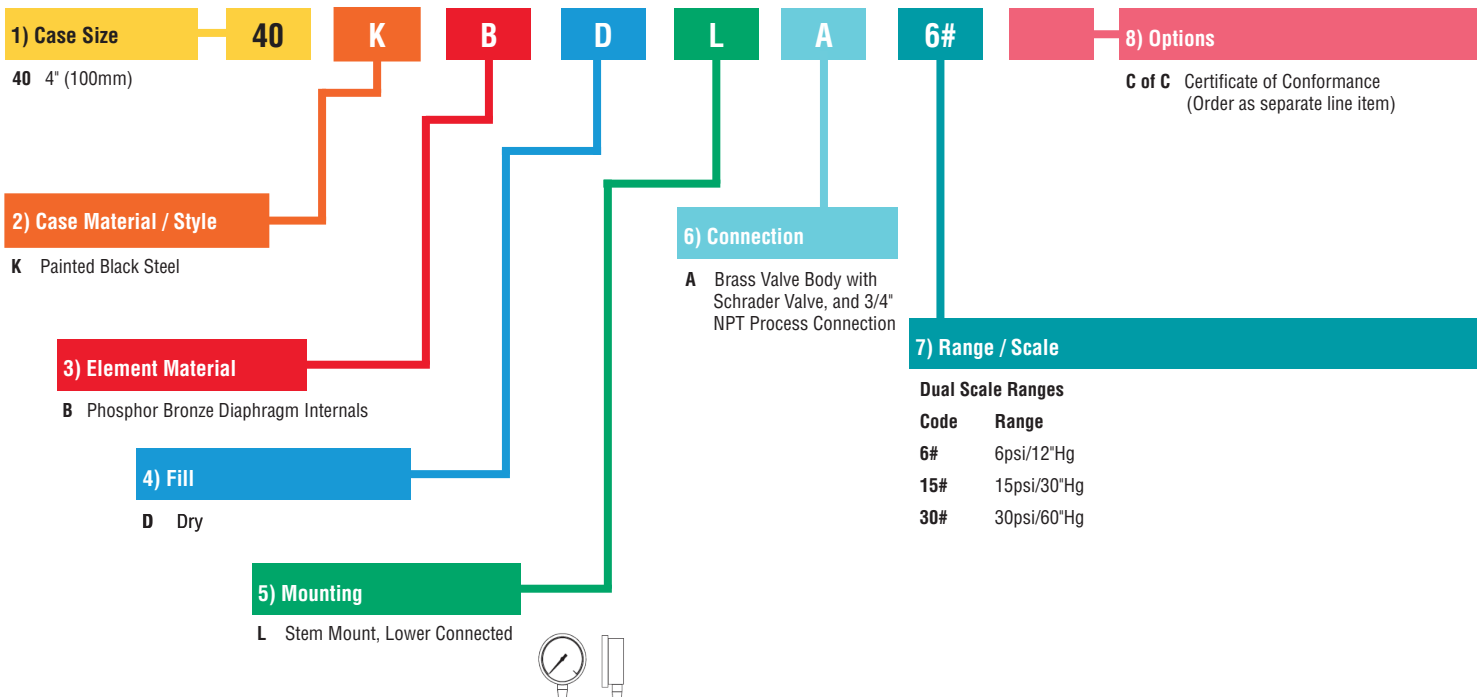
***Palmer 40KB Gas Test Gauges feature a durable plastic face and brass internals. Used to test new gas installations for leaks and for passing inspection codes.***

### APPLICATIONS:

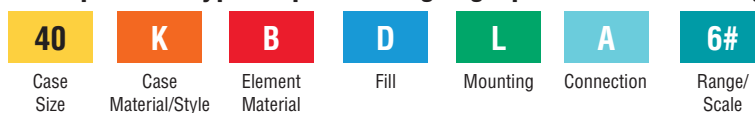
- Test for Leaks in Residential & Commercial Gas, Air & Water Lines
- Test for Leaks in Drain, Waste and Vent Lines
- Test for Low Pressure Plumbing Lines



# ORDERING GUIDE



### Example of a typical pressure gauge part number configuration:



**Contact Customer Service for availability.**