

Robertshaw®

**BJWA SERIES
4350 SERIES**

**GAS
THERMOSTATS**

The Robertshaw® BJWA control is a combination gas cock and by-pass type thermostat. It is available with both by-pass and pilot adjustments. With the BJWA thermostats, the gas is turned on and the temperature setting made with a single turn of the dial.

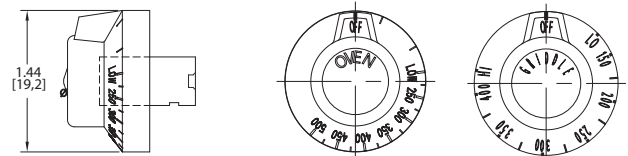
The BJWA is available for a wide variety of applications, especially ranges and griddles.



Features and Benefits

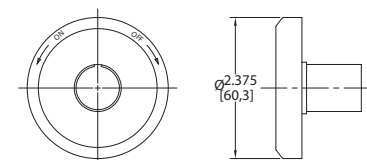
- Highly adaptable because of multiple orientation and number of outlets
- Mounted, via flange nipple, above or below the manifold
- Available with various temperature ranges
- Front adjustment for pilot and by-pass
- Modulating seat action
- Variety of applications from griddles to ovens
- Bulb and capillary available in copper, nickel plated copper and stainless steel

DIAL SUBASSEMBLIES



OTHER DIAL LAYOUTS AVAILABLE

BEZEL SUBASSEMBLIES



Specifications

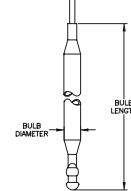
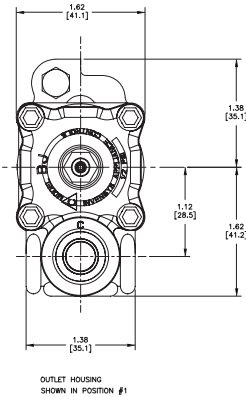
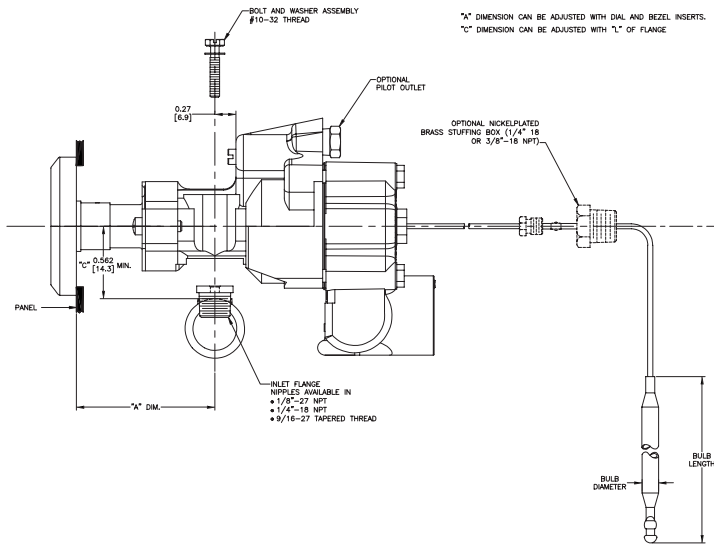
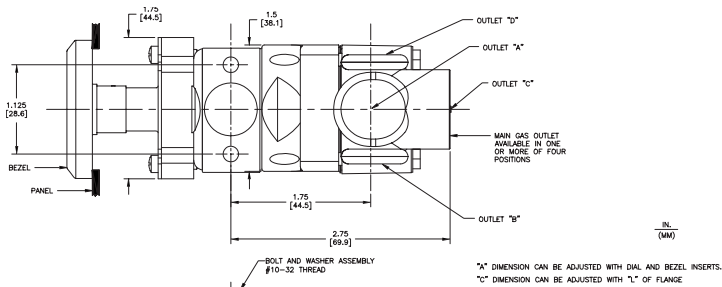
- Ambient temperature: 32°F to 350°F (0°C to 177°C)
- Maximum inlet pressure: 0.5 PSI
- Capacity (Natural Gas) to 70,000 BTU/HR
- Agency Certification Numbers:
 - CSA Certificate # 164327-1177534
 - BSi Certificate # EC-87/96/12/M5-2009
 - CE Certification applies only to BJWE models



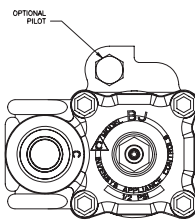
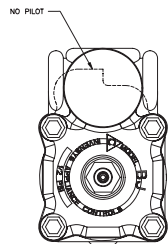
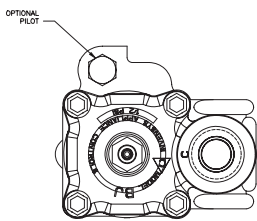
An ISO 9001 – 2008 Certified Company

PRODUCT DIMENSIONS

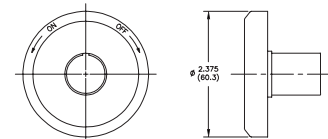
Dimensions are inches and [millimeters].



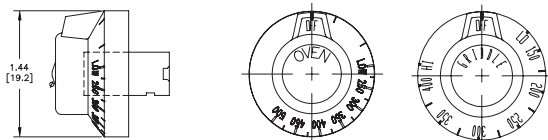
OUTLET HOUSING POSITIONS



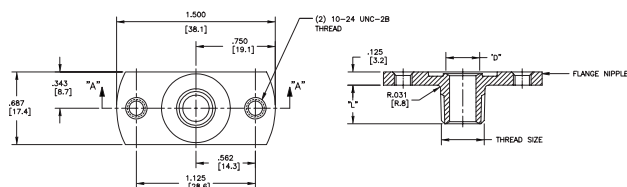
BEZEL SUBASSEMBLIES



DIAL SUBASSEMBLIES



INLET FLANGE NIPPLES



CONTACT INVENSYS FOR OTHER DIAL LAYOUTS