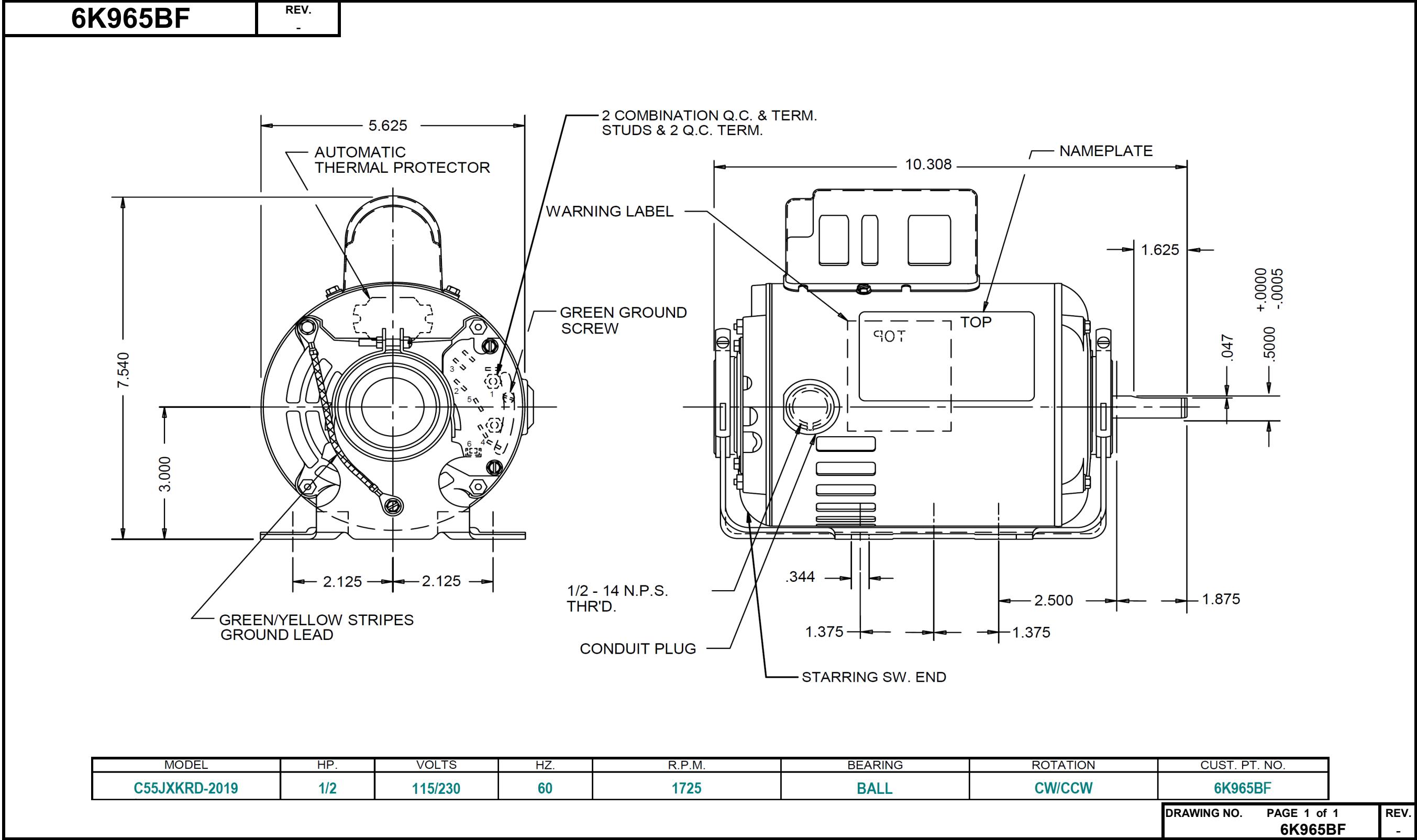


Dimensional Drawing



Dayton Electric Mfg. Co. Lake Forest, IL 60045 USA

Performance Data



6K965BF		REV.
Dayton Manufacturing Company		
Motor Description		Test Conditions
Model:	6K965BF	Test Type: Start
Motor ID:	055KRD201901	Run Cap: 0
Poles:	4	Test Number: 4
Volts:	115/230	Start Cap: 0µfd
Frequency:	60	Poles: 4
HP:	1/2	Volts: 115
Speed:	1725	Hz: 60
Phase:	1	Rotation:
Protector:	MEJ36RO	Special Cond: 2 Line
		Speed Conn:
		TestBoard: Aamps Performance Fixture #1
		Tested: 3/20/2012 8:27:01 AM
		Gear Ratio: 1:1
		Bearing Friction: -0.57 Oz-Ft
		Windage Torque: -1.47 Oz-Ft
Special Points	Vline	Iline
	115.0	42.83
	115.0	42.91
PUT OZ-FT	115.0	42.72
	115.0	42.72
	115.0	42.63
	115.0	42.48
	115.0	42.27
	115.0	42.07
	115.0	41.93
	115.0	41.75
	115.0	41.57
	115.0	41.39
	115.0	41.20
	115.0	40.96
	115.0	40.56
	115.0	39.86
	115.0	39.42
	115.0	39.06
	115.0	38.79
	115.0	23.16
	115.0	22.30
	115.0	20.85
	115.0	19.38
	115.0	17.88
	115.0	16.41
	115.0	14.96
	115.0	13.50
	115.0	12.05
	115.0	10.73
	115.0	9.48
	115.0	8.40
	115.0	7.37
	115.0	6.89
	115.0	6.85
		Watts
		4597
		4602
		4590
		4590
		4587
		4580
		4568
		4556
		4558
		4555
		4547
		4540
		4536
		4523
		4492
		4438
		4406
		4383
		4365
		2107
		2096
		1976
		1844
		1707
		1565
		1420
		1266
		1106
		938
		782
		603
		423
		243
		174
		Speed
		8
		42
		185
		185
		318
		442
		557
		664
		763
		856
		941
		1020
		1093
		1160
		1222
		1279
		1332
		1381
		1425
		1456
		1498
		1535
		1568
		1598
		1625
		1650
		1674
		1696
		1717
		1736
		1754
		1773
		1792
		1799
		Tq(Oz-ft)
		102.16
		104.28
		101.12
		101.12
		105.99
		110.42
		114.72
		118.72
		123.00
		127.39
		131.30
		134.28
		137.62
		139.51
		139.47
		136.97
		134.95
		132.42
		128.80
		52.12
		60.37
		60.96
		60.19
		57.54
		55.84
		52.91
		48.39
		43.55
		37.57
		30.98
		22.61
		13.96
		4.07
		0.00
		HP
		0.010
		0.052
		0.223
		0.223
		0.402
		0.581
		0.760
		0.939
		1.118
		1.298
		1.471
		1.631
		1.790
		1.926
		2.029
		2.086
		2.141
		2.177
		2.185
		0.903
		1.076
		1.114
		1.123
		1.094
		1.080
		1.040
		0.965
		0.879
		0.768
		0.640
		0.472
		0.295
		0.087
		0.000
		Eff (%)
		0.2
		0.8
		3.6
		3.6
		6.5
		9.5
		12.4
		15.4
		18.3
		21.3
		24.1
		26.8
		29.4
		31.8
		33.7
		35.1
		36.2
		37.1
		37.4
		32.0
		38.3
		42.0
		45.4
		47.8
		51.5
		54.6
		56.8
		59.3
		61.0
		61.1
		58.4
		51.9
		26.6
		0.0
		PF (%)
		93.3
		93.3
		93.4
		93.4
		93.6
		93.8
		94.0
		94.2
		94.5
		94.9
		95.1
		95.4
		95.7
		96.0
		96.3
		96.8
		97.2
		97.6
		97.9
		79.1
		81.7
		82.4
		82.8
		83.0
		82.9
		82.5
		81.6
		79.8
		76.1
		71.8
		62.4
		49.9
		30.7
		22.0
DRAWING NO.		PAGE 1 of 8
6K965BF		REV.
-		-

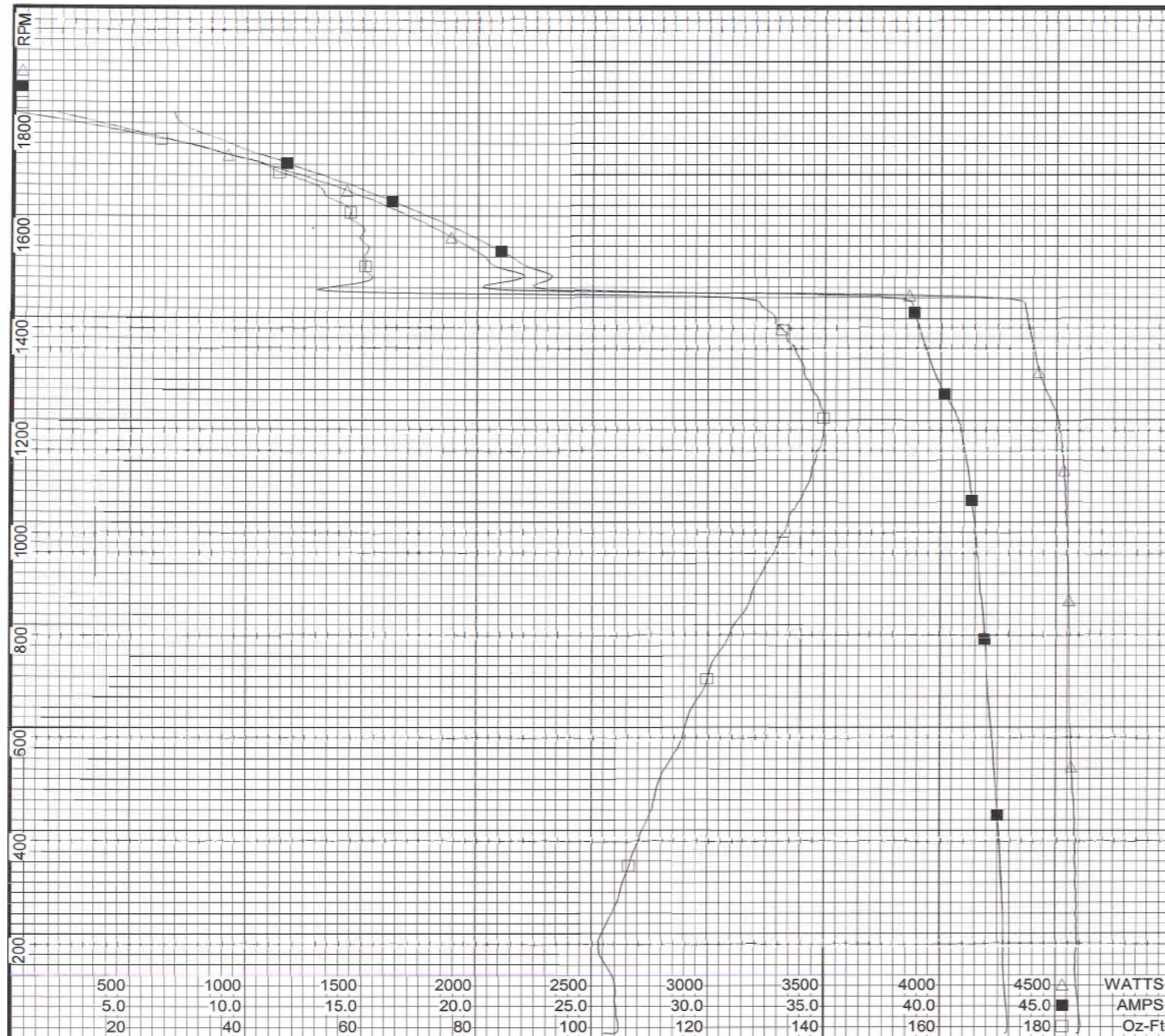
Performance Data



6K965BF

REV.

-



Curve Descriptions:
 Motor(1) Test 4 Start 115V 60 Hz 4P
 2 Line Attempt #1
 □ SPEED vs TORQUE
 ■ SPEED vs ILine
 △ SPEED vs WATTS

Motor Ratings:
 (1) 6K965BF
 C055KRD201901 ID: 1

DRAWING NO.	PAGE 2 of 8	REV.
6K965BF		-

Dayton Electric Mfg. Co. Lake Forest, IL 60045 USA

©2020 W.W. Grainger, Inc. This design may not be reproduced, modified or redistributed without written permission from W.W. Grainger, Inc.

Performance Data



6K965BF

REV.

-

Dayton Manufacturing Company

Motor Description

Model: 6K965BF
 Motor ID: C055KRD201901
 Poles: 4
 Volts: 115/230
 Frequency: 60
 HP: 1/2
 Speed: 1725
 Phase: 1
 Protector: MEJ36RO

Test Conditions

Test Type: Run
 Test Number: 6
 Poles: 4
 Volts: 115
 Hz: 60
 Rotation:
 Special Cond: 2 Line
 Speed Conn:
 TestBoard: Amtps Performance Fixture #1
 Run Cap: 0
 Start Cap: 0µfd
 Tested: 3/20/2012 8:20:52 AM
 Gear Ratio: 1:1
 Bearing Friction: -0.60 Oz-Ft
 Windage Torque: -1.60 Oz-Ft

Special Points	Vline	Iline	Watts	Speed	Tq(Oz-ft)	HP	Eff(%)	PF(%)
	115.0	7.18	177	1791	0.00	0.000	0.0	21.5
	115.0	7.29	367	1773	11.27	0.238	48.3	43.8
	115.0	8.17	587	1753	23.52	0.491	62.4	62.5
24.3 OZ-FT	115.0	8.26	603	1751	24.30	0.507	62.7	63.4
0.5 HP	115.0	8.22	596	1752	23.98	0.500	62.6	63.0
30.4 OZ-FT	115.0	9.11	732	1738	30.40	0.629	64.1	69.8
0.625 HP	115.0	9.08	728	1739	30.20	0.625	64.1	69.6
	115.0	9.44	776	1734	32.72	0.675	65.0	71.5
1725 RPM	115.0	10.13	858	1725	36.20	0.743	64.7	73.6
	115.0	10.80	946	1713	39.90	0.814	64.2	76.2
	115.0	12.42	1139	1692	46.76	0.942	61.7	79.8
	115.0	13.84	1303	1669	52.85	1.050	60.1	81.9
	115.0	15.42	1466	1644	57.19	1.119	56.9	82.7
	115.0	16.97	1621	1618	60.80	1.171	53.9	83.1
	115.0	18.56	1772	1588	62.55	1.183	49.8	83.0
	115.0	20.06	1910	1558	64.96	1.205	47.1	82.8
BDT OZ-FT	115.0	21.57	2040	1524	65.78	1.194	43.7	82.2
	115.0	21.57	2040	1524	65.78	1.194	43.7	82.2
	115.0	23.04	2162	1487	65.10	1.153	39.8	81.6
	115.0	24.49	2271	1448	63.89	1.102	36.2	80.6
	115.0	25.83	2372	1404	61.54	1.029	32.4	79.8
	115.0	27.11	2461	1358	58.61	0.947	28.7	78.9
	115.0	28.30	2540	1306	55.73	0.866	25.5	78.0
	115.0	29.43	2609	1250	51.91	0.773	22.1	77.1
	115.0	30.48	2671	1190	47.70	0.676	18.9	76.2
	115.0	31.43	2721	1125	42.99	0.576	15.8	75.3
	115.0	32.30	2764	1056	38.17	0.480	12.9	74.4
	115.0	33.10	2801	980	33.51	0.391	10.4	73.6
	115.0	33.81	2831	899	28.52	0.305	8.0	72.8
	115.0	35.51	3141	812	41.93	0.406	9.6	76.9
	115.0	42.16	4574	733	119.73	1.045	17.0	94.3
	115.0	42.33	4585	628	116.45	0.871	14.2	94.2
	115.0	42.54	4594	519	112.83	0.697	11.3	93.9
	115.0	42.72	4608	403	108.56	0.521	8.4	93.8
	115.0	42.86	4615	280	105.07	0.350	5.7	93.6
	115.0	42.87	4611	149	102.74	0.182	2.9	93.5

DRAWING NO. PAGE 3 of 8 REV.
 6K965BF -

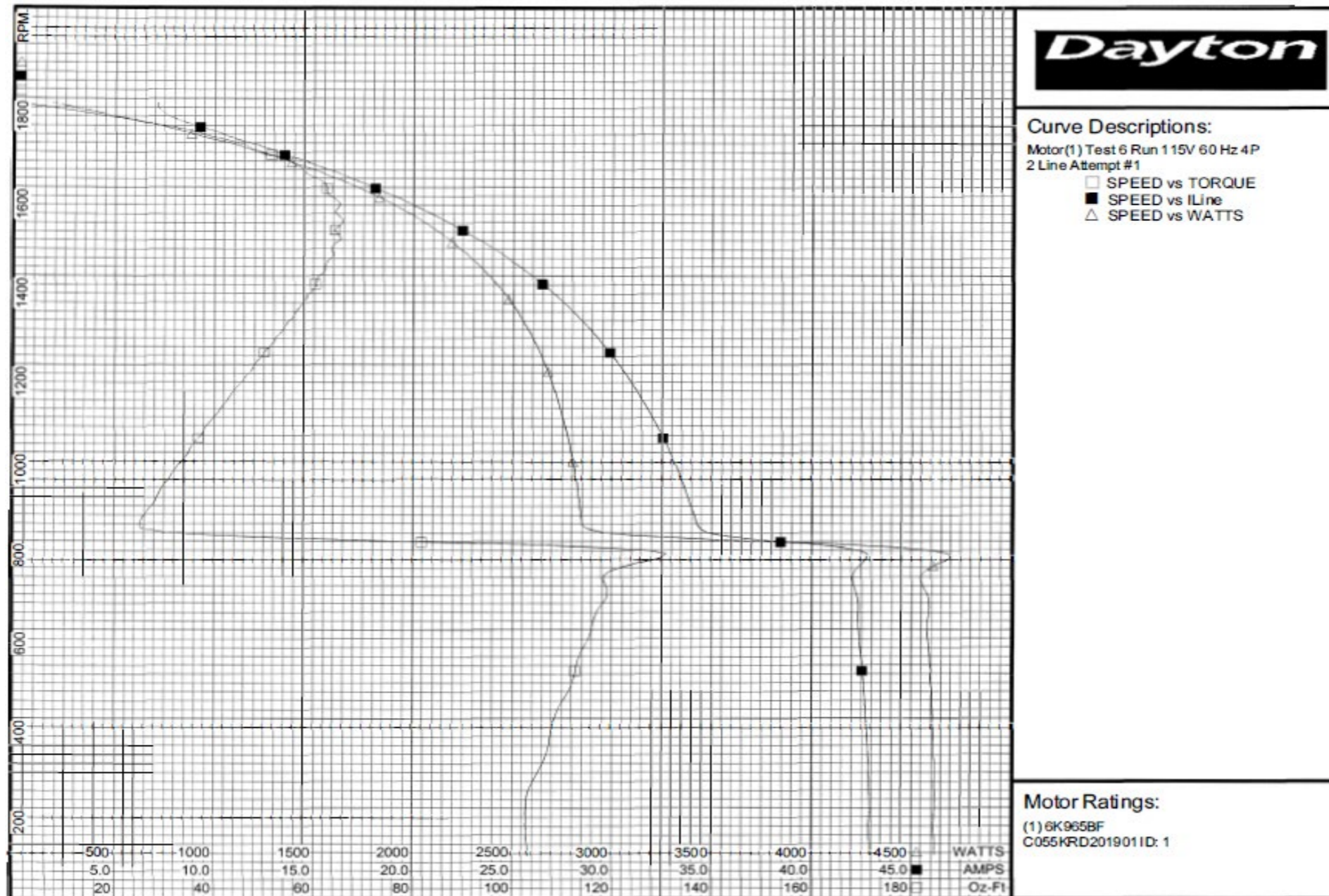
Performance Data



6K965BF

REV.

-



DRAWING NO.	PAGE 4 of 8	REV.
6K965BF		-

Dayton Electric Mfg. Co. Lake Forest, IL 60045 USA

Performance Data



6K965BF

REV.

-

Dayton Manufacturing Company

Motor Description

Model: 6K965BF
 Motor ID: C055KRD201901
 Poles: 4
 Volts: 115/230
 Frequency: 60
 HP: 1/2
 Speed: 1725
 Phase: 1
 Protector: MEJ36RO

Test Conditions

Test Type: Start
 Test Number: 12
 Poles: 4
 Volts: 230
 Hz: 60
 Rotation:
 Special Cond: 2 Line
 Speed Conn:
 TestBoard: Aamps Performance Fixture #1
 Run Cap: 0
 Start Cap: 0µfd
 Tested: 3/19/2012 2:36:15 PM
 Gear Ratio: 1:1
 Bearing Friction: -0.50 Oz-Ft
 Windage Torque: -1.31 Oz-Ft

Special Points	Vline	Iline	Watts	Speed	Tq(Oz-ft)	HP	Eff (%)	PF (%)
	230.0	21.94	4552	7	93.04	0.008	0.1	90.2
	230.0	21.82	4530	40	91.73	0.044	0.7	90.3
PUT OZ-FT	230.0	21.80	4527	184	89.37	0.196	3.2	90.3
	230.0	21.80	4527	184	89.37	0.196	3.2	90.3
	230.0	21.74	4526	317	94.58	0.357	5.9	90.5
	230.0	21.63	4512	441	97.87	0.514	8.5	90.7
	230.0	21.49	4496	557	101.74	0.674	11.2	91.0
	230.0	21.35	4479	664	105.35	0.832	13.9	91.2
	230.0	21.21	4468	763	109.43	0.994	16.6	91.6
	230.0	21.06	4455	855	113.87	1.159	19.4	92.0
	230.0	20.85	4434	941	117.11	1.312	22.1	92.4
	230.0	20.62	4409	1019	119.31	1.448	24.5	93.0
	230.0	20.39	4384	1092	121.38	1.579	26.9	93.5
	230.0	20.17	4364	1160	123.23	1.702	29.1	94.0
	230.0	19.96	4340	1221	124.04	1.803	31.0	94.5
	230.0	19.76	4320	1279	124.29	1.893	32.7	95.1
	230.0	19.53	4291	1332	123.41	1.957	34.0	95.5
	230.0	19.31	4263	1381	121.82	2.003	35.0	96.0
	230.0	19.10	4231	1425	118.97	2.018	35.6	96.3
	230.0	11.54	2070	1457	55.13	0.956	34.4	78.0
	230.0	11.03	2063	1498	62.27	1.111	40.2	81.3
	230.0	10.31	1946	1534	62.50	1.141	43.7	82.1
	230.0	9.56	1812	1567	61.49	1.147	47.2	82.4
	230.0	8.83	1674	1597	59.04	1.123	50.0	82.4
	230.0	8.09	1529	1625	57.47	1.112	54.2	82.2
	230.0	7.36	1384	1649	53.25	1.045	56.3	81.7
	230.0	6.63	1227	1673	49.25	0.981	59.6	80.4
	230.0	5.97	1073	1695	43.09	0.869	60.4	78.1
	230.0	5.33	922	1715	38.25	0.781	63.2	75.2
	230.0	4.67	747	1735	30.25	0.625	62.4	69.6
	230.0	4.16	591	1753	22.96	0.479	60.5	61.7
	230.0	3.82	418	1772	13.47	0.284	50.8	47.6
	230.0	3.59	236	1791	2.81	0.060	18.9	28.6
	230.0	3.58	181	1796	0.00	0.000	0.0	22.0

DRAWING NO. PAGE 5 of 8 REV.
 6K965BF -

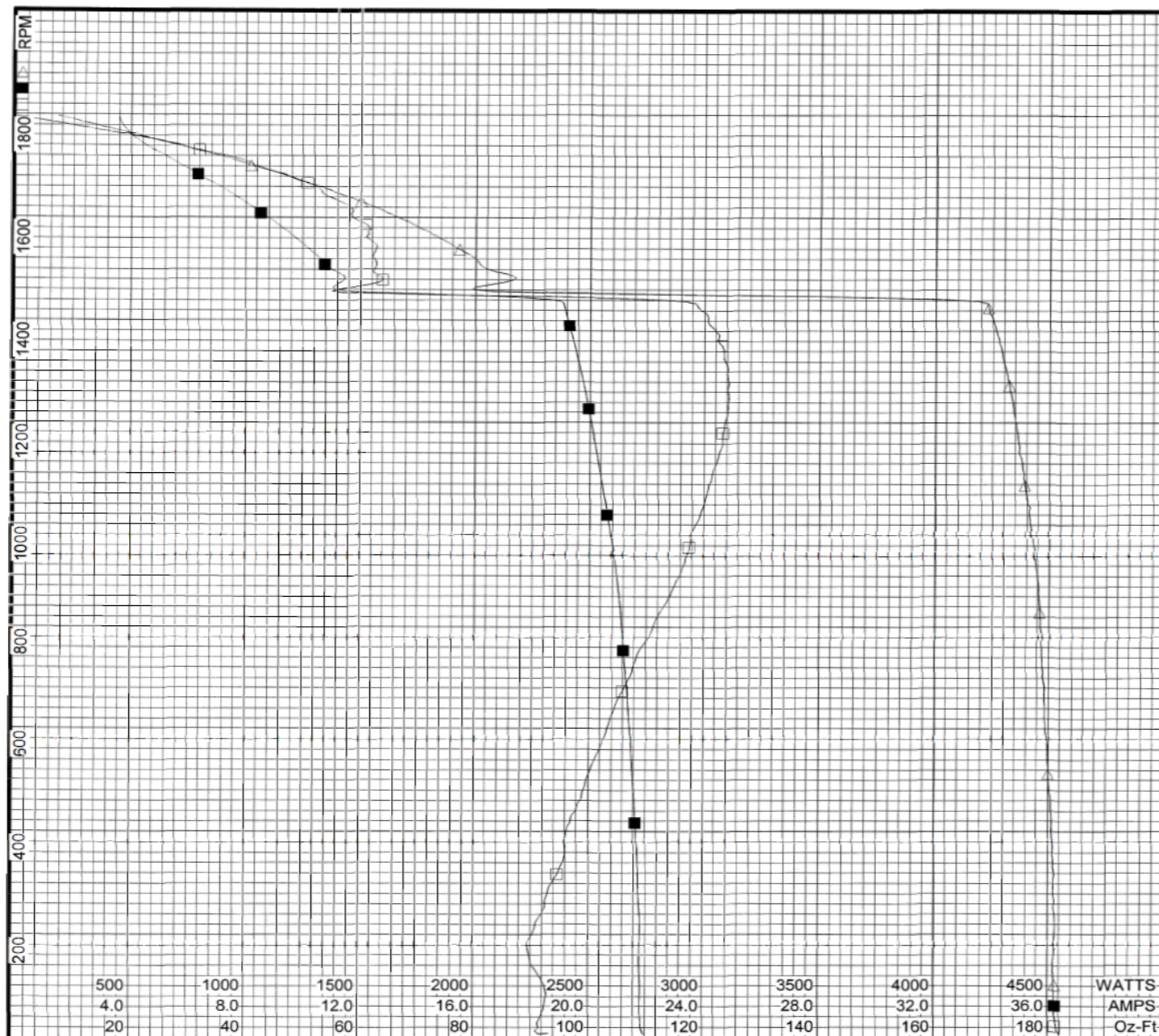
Performance Data



6K965BF

REV.

-



Curve Descriptions:

Motor(1) Test 12 Start 230V 60 Hz 4P
2 Line Attempt #1

- SPEED vs TORQUE
- SPEED vs ILine
- △ SPEED vs WATTS

Motor Ratings:

(1) 6K965BF
C055KRD201901 ID: 1

DRAWING NO.	PAGE 6 of 8	REV.
6K965BF		-

Dayton Electric Mfg. Co. Lake Forest, IL 60045 USA

Performance Data



6K965BF

REV.

-

Dayton Manufacturing Company

Motor Description

Model: 6K965BF
 Motor ID: C055KRD201901
 Poles: 4
 Volts: 115/230
 Frequency: 60
 HP: 1/2
 Speed: 1725
 Phase: 1
 Protector: MEJ36RO

Test Conditions

Test Type: Run
 Test Number: 14
 Poles: 4
 Volts: 230
 Hz: 60
 Rotation:
 Special Cond: 2 Line
 Speed Conn:
 TestBoard: Amtps Performance Fixture #1
 Run Cap: 0
 Start Cap: 0µfd
 Tested: 3/19/2012 2:35:12 PM
 Gear Ratio: 1:1
 Bearing Friction: -0.57 Oz-Ft
 Windage Torque: -1.39 Oz-Ft

Special Points	Vline	Iline	Watts	Speed	Tq (Oz-ft)	HP	Eff(%)	PF(%)
	230.0	3.51	167	1792	0.00	0.000	0.0	20.6
	230.0	3.65	348	1774	10.34	0.218	46.8	41.4
	230.0	4.01	542	1754	20.89	0.436	60.0	58.8
24.3 OZ-FT	230.0	4.16	607	1747	24.30	0.505	62.1	63.4
0.5 HP	230.0	4.14	600	1748	24.03	0.500	62.1	63.0
30.4 OZ-FT	230.0	4.54	730	1735	30.40	0.628	64.2	69.9
0.625 HP	230.0	4.53	727	1735	30.26	0.625	64.1	69.8
	230.0	4.56	735	1734	30.65	0.633	64.2	70.1
1725 RPM	230.0	4.90	825	1725	34.79	0.714	64.6	73.2
	230.0	5.28	910	1715	38.40	0.784	64.2	74.9
	230.0	5.99	1093	1693	45.42	0.915	62.4	79.4
	230.0	6.74	1257	1670	50.56	1.005	59.6	81.2
	230.0	7.53	1423	1645	55.93	1.095	57.4	82.2
	230.0	8.31	1581	1619	58.85	1.134	53.5	82.7
	230.0	9.10	1734	1591	62.13	1.177	50.6	82.9
	230.0	9.87	1871	1561	64.15	1.192	47.5	82.4
	230.0	10.64	2008	1527	64.35	1.170	43.4	82.1
BDT OZ-FT	230.0	10.85	2045	1516	65.07	1.174	42.8	81.9
	230.0	11.36	2130	1491	63.88	1.134	39.7	81.5
	230.0	12.09	2248	1451	62.96	1.087	36.1	80.8
	230.0	12.77	2349	1408	61.43	1.030	32.7	80.0
	230.0	13.42	2443	1361	58.55	0.949	29.0	79.1
	230.0	14.03	2524	1311	55.58	0.867	25.6	78.2
	230.0	14.60	2596	1256	52.00	0.777	22.3	77.3
	230.0	15.14	2658	1196	48.05	0.684	19.2	76.4
	230.0	15.63	2714	1131	43.70	0.588	16.2	75.5
	230.0	16.08	2754	1062	39.06	0.494	13.4	74.5
	230.0	16.48	2794	987	34.44	0.405	10.8	73.7
	230.0	16.85	2828	906	30.15	0.325	8.6	73.0
	230.0	17.17	2849	819	24.88	0.243	6.3	72.1
	230.0	21.65	4595	741	116.01	1.023	16.6	92.3
	230.0	21.44	4497	638	104.65	0.794	13.2	91.2
	230.0	21.55	4506	529	100.88	0.635	10.5	90.9
	230.0	21.67	4522	414	96.44	0.475	7.8	90.7
	230.0	21.74	4525	291	92.18	0.319	5.3	90.5
	230.0	21.77	4527	161	90.17	0.172	2.8	90.4

DRAWING NO. PAGE 7 of 8 REV.
 6K965BF -

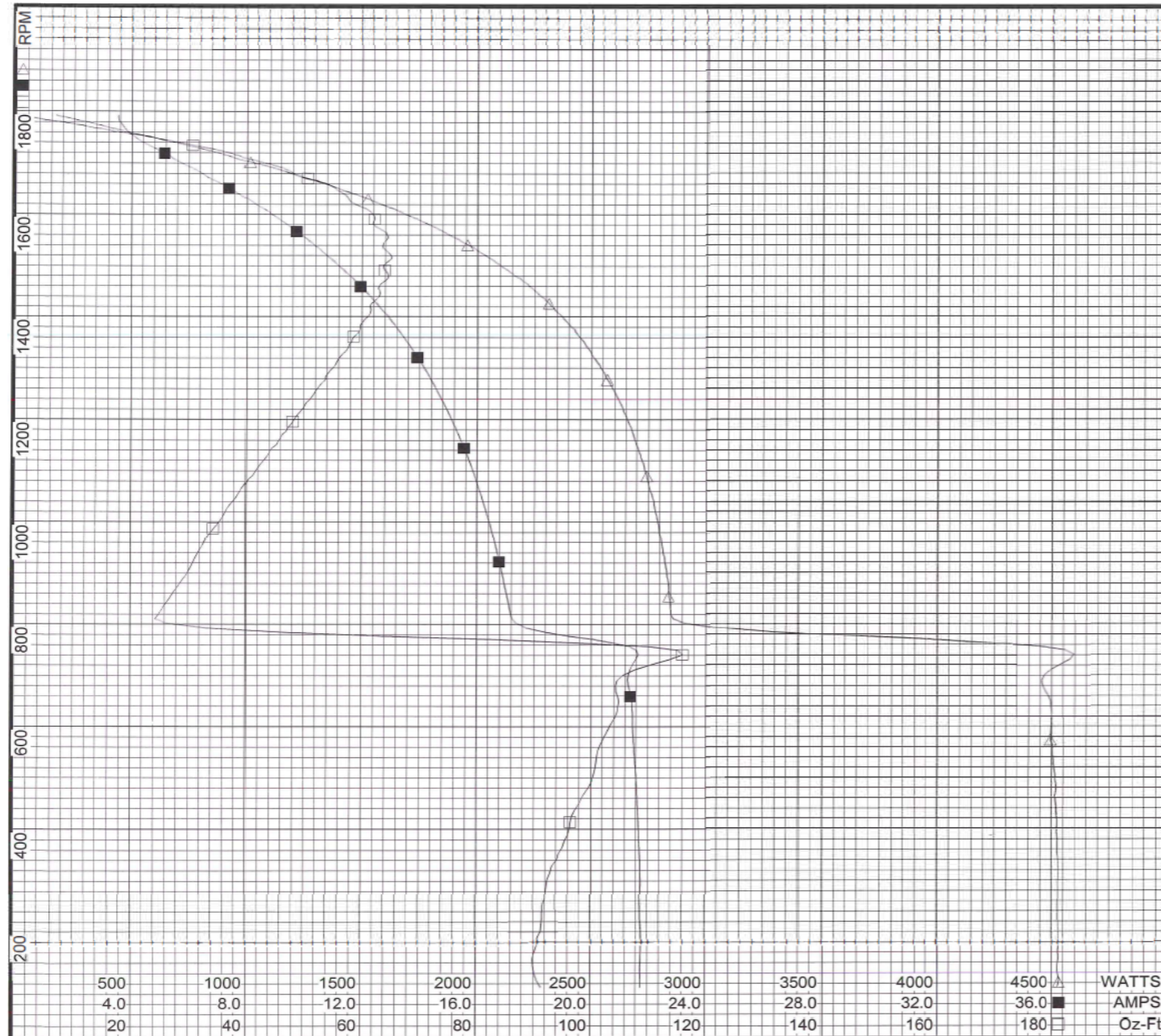
Performance Data



6K965BF

REV.

-



Curve Descriptions:

Motor(1) Test 14 Run 230V 60 Hz 4P
2 Line Attempt #1

- SPEED vs TORQUE
- SPEED vs ILine
- △ SPEED vs WATTS

Motor Ratings:

(1) 6K965BF
C055KRD201901 ID: 1

DRAWING NO.	PAGE 8 of 8	REV.
	6K965BF	-

Dayton Electric Mfg. Co. Lake Forest, IL 60045 USA

6K965BF

REV.
-

SPLIT-PHASE & CAPACITOR START MOTOR PERFORMANCE

HP:	1/2						
Poles:	4						
Ambient (°C):	40						
Altitude (FASL):							
No. of Speeds:	1						
Volts:	115/230	115					230
HZ:	60	60					60
Service Factor:	1.25						
Efficiency:	@ Rated Load	64.1					64.0
Power Factor:	@ Rated Load	59.1					58.5
Amps:	@ No Load	7.05					3.59
	@ Rated Load	8.55					4.32
	@ Service Factor	9.24					4.69
	@ Locked Rotor	42.93					21.66
RPM:	@ Rated Load	1753					1753
Torques:	Breakdown	68.38					69.02
	Locked Rotor	103.03					86.67
	Pull-Up	101.13					85.16
	Rated Load	23.97					23.96
	Service Factor	30.17					30.19
Watts:	Rated Load	582					582
KVA Code:		L					
Temperature Rise:	@ Rated Load	58.30					55.40
	@ Service Factor	70.80					68.30
Thermal Protector:	Trip Temp (°C)	149.80					163.70
Winding Material:	Start (Auxiliary)	Copper					
	Run (Main)	1st half Copper, 2nd half Aluminum					
Capacitor(s):	Start (MFD / Volts)	418					
	No. of Start Capacitors	1					
	Run (MFD / Volts)	N/A					
	No. of Run Capacitors	N/A					

LOW SPEED PERFORMANCE DATA:

HP:									
Poles:									
Volts:		120	208	230	277	460	100	200	
HZ:		60	60	60	60	60	50	50	
Efficiency:	@ Rated Load								
Power Factor:	@ Rated Load								
Amps:	@ No Load								
	@ Rated Load								
	@ Service Factor								
	@ Locked Rotor								
Torques:	BreakDown								
	Locked Rotor								
	Pull-Up								
	Rated Load								
	Service Factor								
Watts:	@ Rated Load								
Temperature Rise:	@ Rated Load								
	@ Service Factor								

DRAWING NO. PAGE 1 of 1
6K965BF

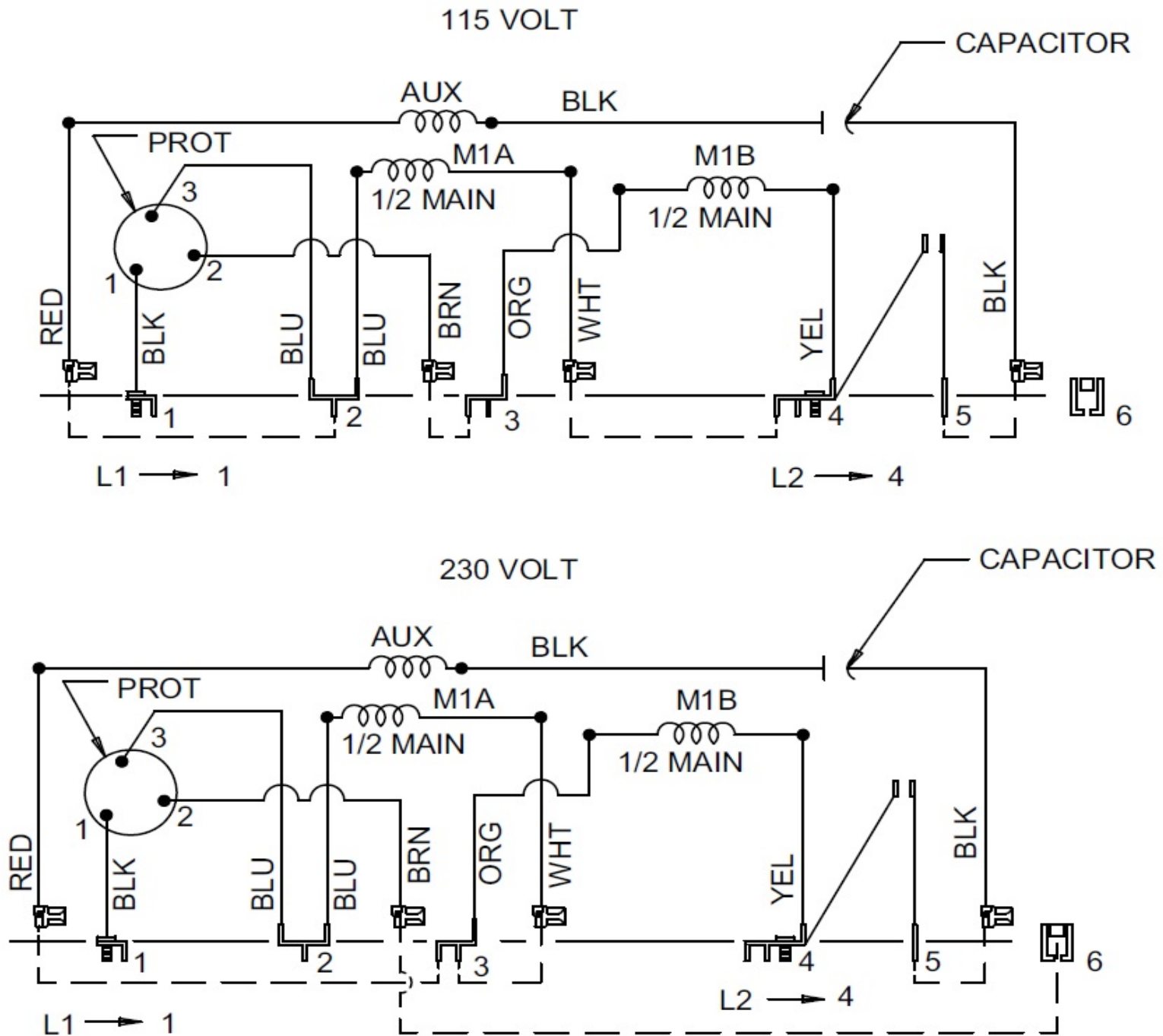
REV.
-

Wiring Diagram

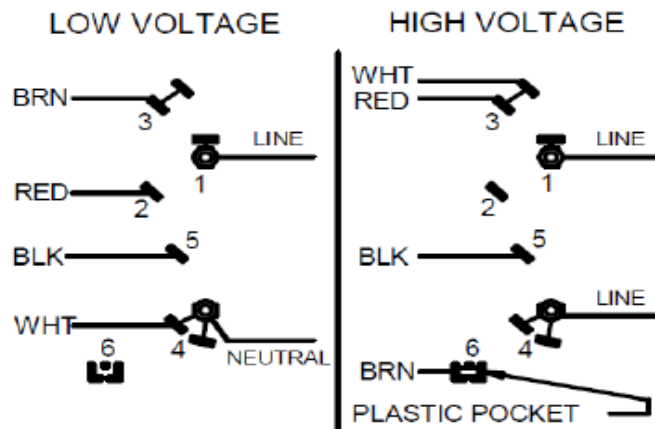


6K965BF

REV.
0



CONNECTIONS



TO REVERSE ROTATION
INTERCHANGE RED AND BLACK LEADS

DRAWING NO. PAGE 1 of 1 REV.
6K965BF 0

Dayton®**BELT DRIVE FAN &
BLOWER MOTOR**HP: 1/2
VOLTS: 115/230

Part No 6K965BF



AMPS: 8.2/4.1

PH: 1

RPM: 1725

HZ: 60

DUTY: CONT

FR: 48Z

SF: 1.25

INS CL: B

KVA CODE: L

AMB: 40 °C

ENCL: ODP

SFA: 9.1/4.5

THERMALLY PROTECTED: AUTO

MFG. NO. PROT. CODE: 04530AVG. F.L.
EFF.

MTR REF: C55JXKRD-2019

TO SAVE ENERGY REPLACE WITH: 30PT65



E37403



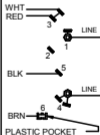
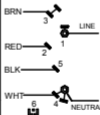
258501

Disconnect Power Before Making Any
Electrical Connections or Changes

CONNECTIONS

LOW VOLTAGE

HIGH VOLTAGE

TO REVERSE ROTATION
INTERCHANGE RED AND BLACK LEADS

Mfd for Dayton Electric Mfg. Co., Lake Forest, IL 60045 USA

Made in Mexico