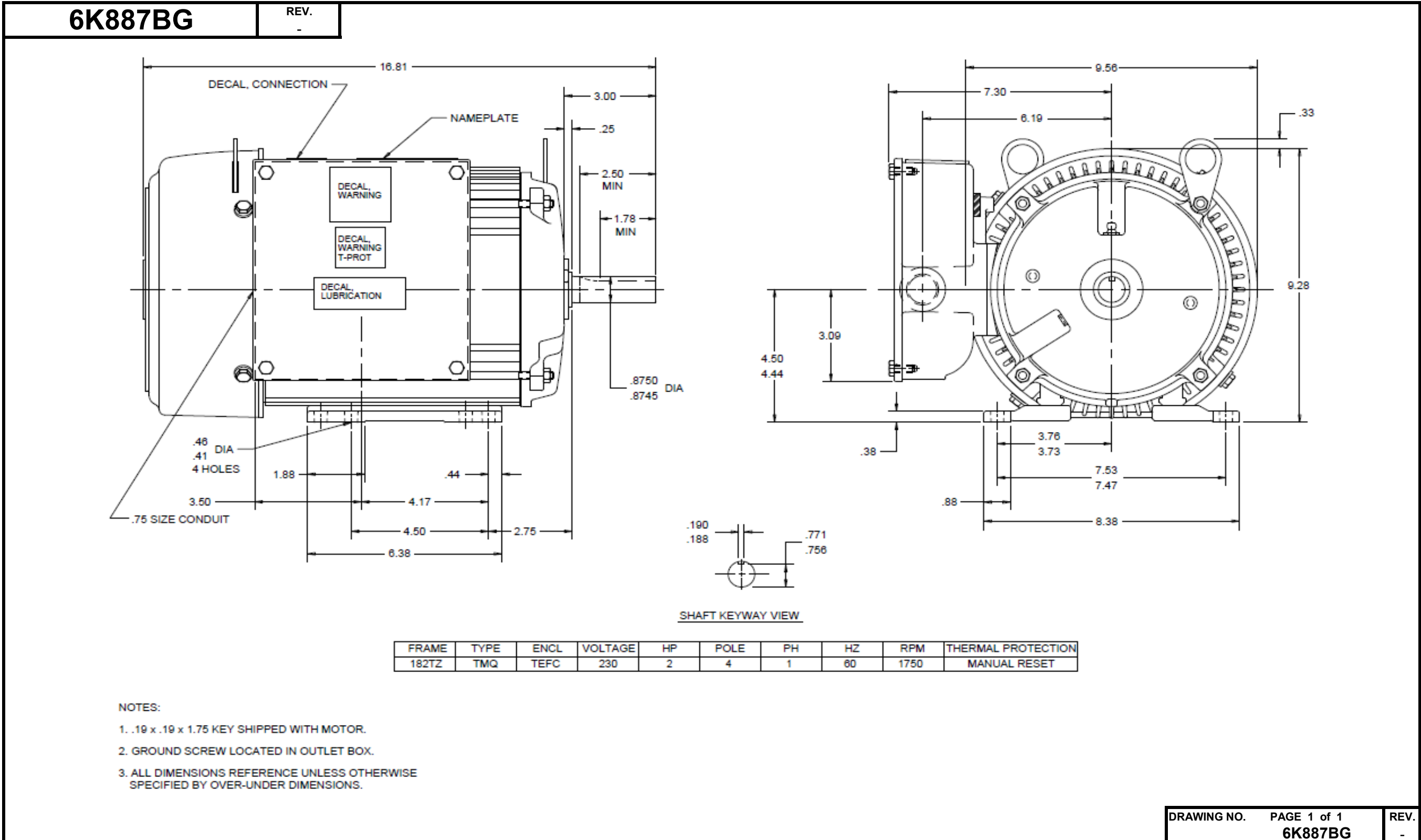


Dimensional Drawing



Dayton Electric Mfg. Co. Lake Forest, IL 60045 USA

Performance Data



6K887BG

REV.
X

MOTOR PERFORMANCE

MODEL NO.	SKU NO.	PHASE	TYPE	FRAME
6K887BG	6K887BG	1	TMQ	182TZ

ORDER NO.	NA	LINE NO.

HP:	2	2
POLES:	4	4
HZ:	60	60
SERVICE FACTOR:	1.15	1.15
DUTY CYCLE:	CONTINUOUS	CONTINUOUS
ALTITUDE (FASL) FT:	3300	3300
MAX AMBIENT:	40°C	40°C
ENCLOSURE:	TE	TE
INSULATION CLASS:	F	F
VOLTS:	115	230
EFFICIENCY (%):		
S.F.	73.4	73.9
FULL	73.4	73.9
3/4	71.8	72.4
1/2	66.7	67.4
1/4	52.7	53.5
POWER FACTOR (%):		
S.F.	74.7	74.6
FULL	70.9	70.8
3/4	61.9	61.7
1/2	49.7	49.3
1/4	33.8	33.3
AMPS:		
S.F.	27.2	13.5
FULL	24.9	12.4
3/4	21.9	10.9
1/2	19.6	9.7
1/4	18.2	9.1
NO LOAD	18.5	9.1
LOCKED ROTOR AMPS:	149.5	80.5
NEMA CODE LETTER	L	L
NEMA DESIGN LETTER	#	#
FULL LOAD RPM	1750	1750
THERMAL PROTECTION	MANUAL RESET	MANUAL RESET
TORQUES:		
BREAKDOWN{LB-FT}	16.1	16.1
LOCKED ROTOR{LB-FT}	18.9	24.2
FULL LOAD{LB-FT}	5.9	5.9

NEMA Nominal and Guaranteed Efficiencies are up to 3,300 feet above sea level and 25 ° C ambient

DRAWING NO.	PAGE 1 of 2	REV.
	6K887BG	X

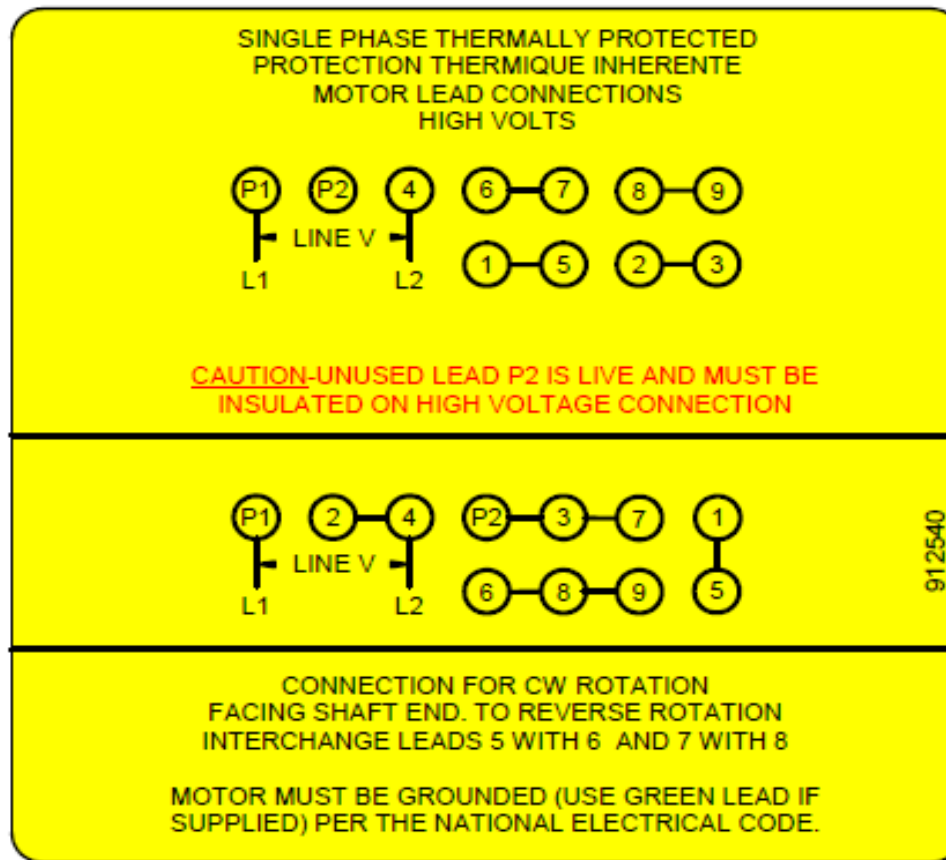
Dayton Electric Mfg. Co. Lake Forest, IL 60045 USA

6K887BG

REV.
0

Motor Wiring Diagram

11 Lead, Dual Voltage, Single Phase, Thermally Protected



CW Rotation facing shaft. To reverse direction of rotation, interchange lead 5 with 6 and lead 7 with 8 for CCW Rotation. Each lead may have one or more cables comprising that lead. In such case, each cable will be marked with the appropriate lead number.

DRAWING NO.	PAGE 1 of 1	REV.
6K887BG		0

Dayton**Farm Duty Motor**

D 258525

MODEL NO **6K887BG**VOLTS **115/230**HP **2** RPM **1750**AMPS **25.6/12.8**PH **1** FRAME **182TZ** TYPE **TMQ**SFA **28.0/14.0**MOTOR
REFSF **1.15**HZ **60**NEMA
DESIGN **L**INSUL
CLASS **F**ENCL **TEFC**MAX
AMB **40 C**LR KVA
CODE **L**THERMALLY
PROTECTED **MANUAL RESET**DUTY **CONT**SHAFT
END BRG **6206**OPP
END BRG **6205**

Make sure that voltage,
phase and freq of line
agrees with values given
on this plate. Connect
per wiring diagram
supplied with motor.

2040632

Manufactured for Dayton Electric Mfg. Co., Lake Forest, IL 60045 U.S.A.

Made In Mexico