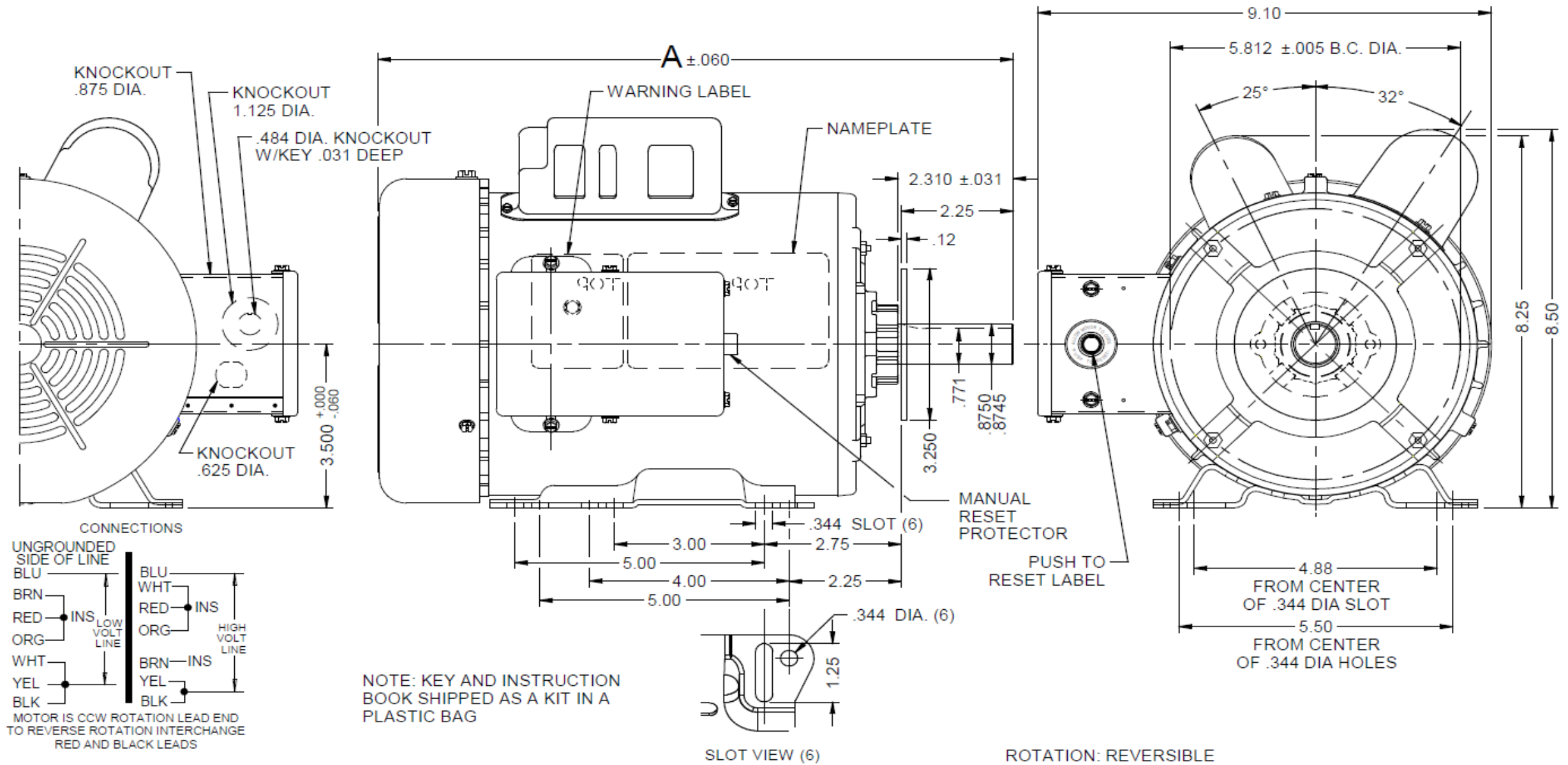


# Dimensional Drawing

**6K886BG**

REV.  
-

VAR	MODEL	CUST. PT. NO.	A	B	C	D	HP	VOLTS	SF	AMPS	HZ	RPM	CONN VOLTS	PROT.	DESCRIPTION / REMARKS
001	T63YZBHE-2239	6K886BG	14.75	---	---	---	1 1/2	115/230	1.15	19.2/10.1	60	1725	---	MANUAL	143T, TEFC, GREEN, BALL BEARING



DRAWING NO. PAGE 1 of 1 REV.  
6K886BG -

# Performance Data



**6K886BG**

REV.  
-

## MOTOR PERFORMANCE

<b>HP:</b>	1 1/2						
<b>Poles:</b>	4						
<b>No. of Speeds:</b>	1						
<b>Volts:</b>	115/230	<b>115</b>	<b>230</b>				
<b>HZ:</b>	60	<b>60</b>	<b>60</b>				
<b>Service Factor:</b>	1.15						
<b>Efficiency:</b>	@ Rated Load	72.1	73.2				
<b>Power Factor:</b>	@ Rated Load	79.8	78.9				
<b>Amps:</b>	@ No Load						
	@ Rated Load	17	8.4				
	@ Service Factor	18.9	9.5				
	@ Locked Rotor	112.8	58.03				
<b>RPM:</b>	@ Rated Load	1745	1747				
<b>Ambient (°C):</b>	40						
<b>Altitude (FASL):</b>							
<b>Torques:</b>	Breakdown	186.2	190.78				
	Locked Rotor	282.3	260.8				
	Pull-Up	280.8	253.8				
	Rated Load	72.21	72.13				
	Service Factor	84	84				
<b>Watts:</b>	Rated Load	1553	1524				
<b>KVA Code:</b>	L	K	K				
<b>Temperature Rise:</b>	@ Rated Load	73.6	72.6				
	@ Service Factor	89.3	89.3				
<b>Thermal Protector:</b>	Trip Temp (°C)	145.9	156.9				
<b>Winding Material:</b>	Start (Auxiliary)	Cu	Cu				
	Run (Main)	Cu	Cu				
<b>Capacitor(s):</b>	Start (MFD / Volts)	896					
	No. of Start Capacitors						
	Run (MFD / Volts)	25					
	No. of Run Capacitors						

### LOW SPEED PERFORMANCE DATA:

<b>HP:</b>							
<b>Poles:</b>							
<b>Volts:</b>							
<b>HZ:</b>							
<b>Efficiency:</b>	@ Rated Load						
<b>Power Factor:</b>	@ Rated Load						
<b>Amps:</b>	@ No Load						
	@ Rated Load						
	@ Service Factor						
	@ Locked Rotor						
<b>Torques:</b>	Bead Down						
	Locked Rotor						
	Pull-Up						
	Rated Load						
	Service Factor						
<b>Watts:</b>	@ Rated Load						
<b>Temperature Rise:</b>	@ Rated Load						
	@ Service Factor						

DRAWING NO. PAGE 1 of 1 REV.  
6K886BG -

# Performance Data



**6K886BG**      REV.  
-

## Dayton Manufacturing Company

### Motor Description

Model: T063BHE223901 6K886BG  
 Motor ID: 1  
 Poles: 4  
 Volts: 115/230  
 Frequency: 60  
 HP: 1.5  
 Speed: 1745  
 Phase: 1  
 Protector: BED2975

### Test Conditions

Test Type: Start  
 Test Number: 1  
 Poles: 4  
 Volts: 115  
 Hz: 60  
 Rotation:  
 Special Cond:  
 Speed Conn:  
 TestBoard: Amps Performance Fixture #2  
 Run Cap: 25 µfd  
 Start Cap: 896 µfd  
 Environment:  
 Tested: 10/14/2009 12:35:22 PM  
 Tested By: Sharp, Gerald  
 Gear Ratio: 1:1  
 Bearing Friction: -0.32 Oz-Ft  
 Windage Torque: -2.88 Oz-Ft

Special Points	Vline(V)	Vaux(V)	Vcap(V)	Iline(A)	Imain(A)	Iaux(A)	Watts	RPM	Tq(Oz-ft)	HP	Eff(%)	PF(%)	Cap
PUT OZ-FT	115.0	104.6	139.7	112.84	97.82	48.60	11957	13	282.3	0.044	0.3	92.1	923.1
	<b>115.0</b>	<b>104.6</b>	<b>139.7</b>	<b>112.82</b>	<b>97.79</b>	<b>48.57</b>	<b>11942</b>	<b>12</b>	<b>280.8</b>	<b>0.040</b>	<b>0.3</b>	<b>92.0</b>	<b>922.3</b>
	115.0	105.1	138.5	112.55	97.37	48.27	11946	57	289.4	0.198	1.2	92.3	924.5
	115.0	106.6	135.5	112.14	95.74	47.07	11889	212	289.5	0.732	4.6	92.2	921.5
	115.0	107.7	133.0	111.07	93.51	46.06	11813	359	305.5	1.306	8.2	92.5	918.5
	115.0	108.6	129.4	109.22	91.00	44.75	11650	489	309.2	1.800	11.5	92.7	917.6
	115.0	109.9	125.0	107.80	88.99	42.96	11471	613	315.4	2.301	15.0	92.5	911.7
	115.0	114.8	121.6	109.45	88.39	41.67	11620	727	328.8	2.845	18.3	92.3	909.2
	115.0	120.7	120.3	110.39	86.44	41.27	11831	834	352.4	3.501	22.1	93.2	910.2
	115.0	125.2	119.3	109.87	83.59	40.94	11897	929	363.3	4.018	25.2	94.2	910.3
	115.0	131.0	118.5	109.81	80.83	40.63	11985	1019	379.5	4.603	28.7	94.9	909.3
	115.0	137.0	118.0	110.09	78.46	40.32	12050	1099	389.9	5.099	31.6	95.2	906.7
	115.0	143.4	117.3	110.02	75.98	40.20	12117	1172	391.1	5.456	33.6	95.8	908.8
	115.0	149.9	117.0	109.62	73.53	40.21	12156	1239	393.0	5.797	35.6	96.4	911.6
	115.0	157.3	117.9	109.42	71.19	40.55	12201	1300	387.8	6.002	36.7	97.0	912.7
	115.0	165.3	119.7	109.49	69.13	41.27	12257	1355	378.9	6.114	37.2	97.3	914.2
	115.0	173.6	122.3	109.63	67.37	42.33	12323	1405	366.6	6.132	37.1	97.7	917.8
	115.0	181.5	125.7	109.67	65.76	43.64	12369	1450	347.8	6.005	36.2	98.1	921.1
	115.0	65.4	111.9	56.16	58.71	-1.80	5233	1468	174.1	3.043	43.4	81.0	-42.8
	115.0	78.7	116.9	54.48	54.34	0.95	5215	1516	180.0	3.249	46.5	83.2	21.6
	115.0	84.9	121.3	49.73	49.40	1.17	4837	1557	178.3	3.305	51.0	84.6	25.6
	115.0	90.4	126.4	44.84	44.50	1.22	4410	1593	172.1	3.265	55.2	85.5	25.6
	115.0	96.0	131.5	40.18	39.81	1.27	3985	1624	162.3	3.138	58.7	86.2	25.6
	115.0	100.6	137.1	35.53	35.12	1.31	3530	1653	148.1	2.915	61.6	86.4	25.4
	115.0	105.8	142.7	30.98	30.57	1.37	3077	1678	136.5	2.726	66.1	86.4	25.5
	115.0	110.2	148.2	26.59	26.19	1.42	2615	1701	118.0	2.390	68.2	85.5	25.5
	115.0	114.1	153.7	22.36	22.02	1.47	2146	1723	98.5	2.020	70.2	83.4	25.4
	115.0	118.8	160.0	18.06	17.83	1.53	1660	1744	77.5	1.609	72.3	79.9	25.4
	115.0	122.2	166.0	14.48	14.48	1.59	1189	1762	52.8	1.107	69.5	71.4	25.4
	115.0	126.5	173.6	11.19	11.68	1.64	650	1783	22.9	0.486	55.8	50.5	25.1
	115.0	129.7	179.7	10.07	11.04	1.68	279	1797	0.0	0.000	0.0	24.1	24.8

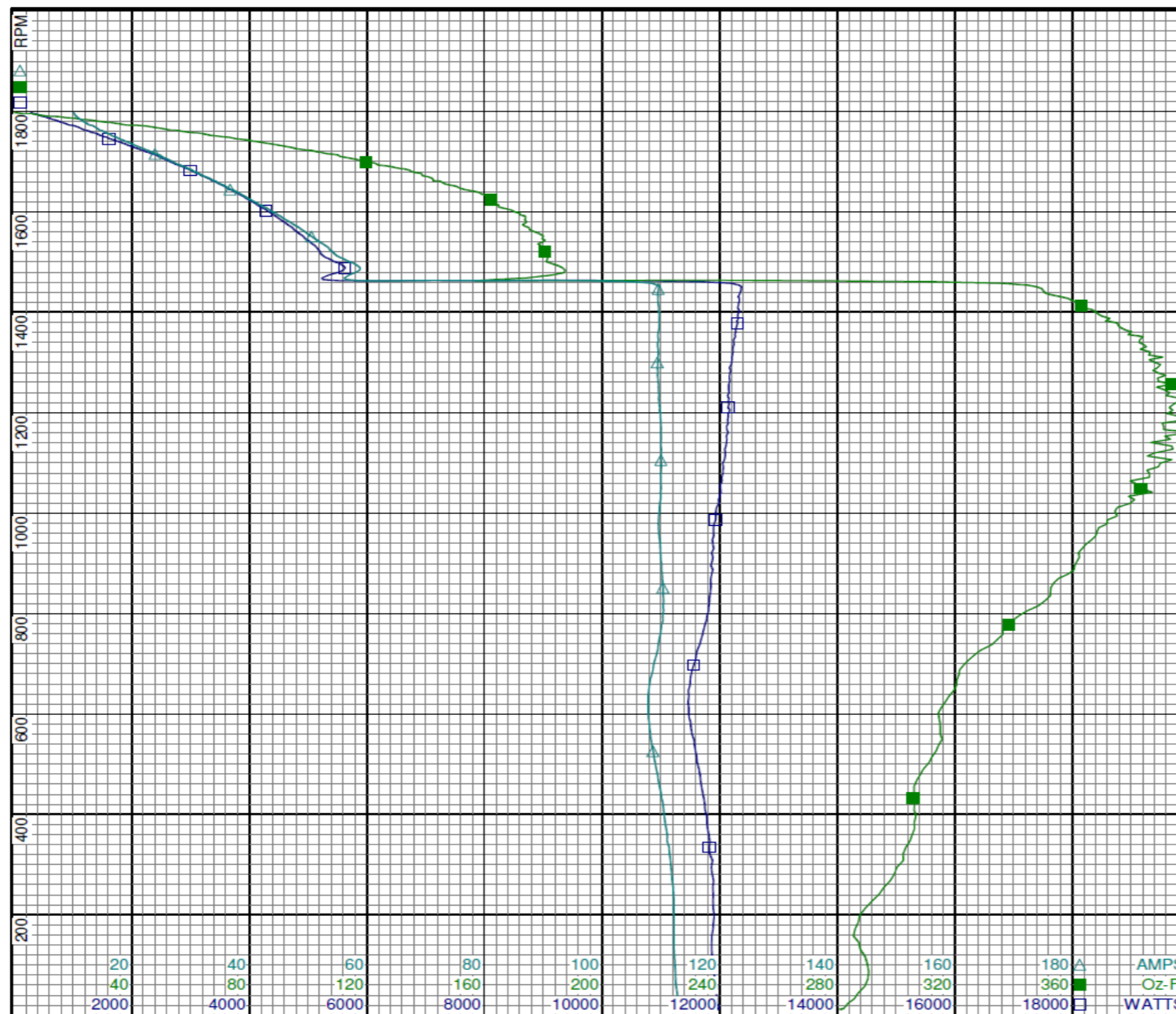
DRAWING NO.      PAGE 1 of 8      REV.  
**6K886BG**      -

**Dayton Electric Mfg. Co. Lake Forest, IL 60045 USA**

# Performance Data



**6K886BG**      REV. -



**Curve Descriptions:**

Motor(1) Test 1 Start 115V 60 Hz 4P

- SPEED vs WATTS
- SPEED vs TORQUE
- △ SPEED vs ILine

**Motor Ratings:**

T063BHE223901 6K886BG

DRAWING NO.	PAGE 2 of 8	REV.
6K886BG		-

**Dayton Electric Mfg. Co. Lake Forest, IL 60045 USA**



# Performance Data



**6K886BG**

REV.

-

## Dayton Manufacturing Company

### Motor Description

Model: T063BHE223901 6K886BG  
 Motor ID: 1  
 Poles: 4  
 Volts: 115/230  
 Frequency: 60  
 HP: 1.5  
 Speed: 1745  
 Phase: 1  
 Protector: BED2975

### Test Conditions

Test Type: Run  
 Test Number: 6  
 Poles: 4  
 Volts: 115  
 Hz: 60  
 Rotation:  
 Special Cond:  
 Speed Conn:  
 TestBoard: Amtps Performance Fixture #2  
 Run Cap: 25 µfd  
 Start Cap: 896 µfd  
 Environment:  
 Tested: 10/14/2009 12:34:07 PM  
 Tested By: Sharp, Gerald  
 Gear Ratio: 1:1  
 Bearing Friction: -0.48 Oz-Ft  
 Windage Torque: -3.04 Oz-Ft

Special Points	Vline(V)	Vaux(V)	Vcap(V)	Iline(A)	Imain(A)	Iaux(A)	Watts	RPM	Tq(Oz-ft)	HP	Eff(%)	PF(%)	Cap
	115.0	130.9	181.1	9.57	10.58	1.744	231	1792	0.00	0.000	0.0	21.0	25.5
	115.0	126.4	172.5	11.19	11.54	1.693	732	1775	29.31	0.619	63.1	56.9	26.0
	115.0	122.5	165.5	14.47	14.41	1.643	1234	1757	56.29	1.177	71.2	74.1	26.3
<b>73 OZ-FT</b>	<b>115.0</b>	<b>119.8</b>	<b>161.2</b>	<b>17.09</b>	<b>16.87</b>	<b>1.600</b>	<b>1569</b>	<b>1744</b>	<b>73.00</b>	<b>1.516</b>	<b>72.1</b>	<b>79.8</b>	<b>26.3</b>
<b>1745 RPM</b>	<b>115.0</b>	<b>119.9</b>	<b>161.4</b>	<b>16.95</b>	<b>16.73</b>	<b>1.602</b>	<b>1551</b>	<b>1745</b>	<b>72.13</b>	<b>1.498</b>	<b>72.1</b>	<b>79.6</b>	<b>26.3</b>
<b>1.5 HP</b>	<b>115.0</b>	<b>119.9</b>	<b>161.3</b>	<b>16.96</b>	<b>16.74</b>	<b>1.602</b>	<b>1553</b>	<b>1745</b>	<b>72.21</b>	<b>1.500</b>	<b>72.1</b>	<b>79.6</b>	<b>26.3</b>
	115.0	118.6	159.0	18.58	18.30	1.583	1748	1739	82.41	1.706	72.8	81.8	26.4
<b>84 OZ-FT</b>	<b>115.0</b>	<b>118.2</b>	<b>158.8</b>	<b>18.88</b>	<b>18.58</b>	<b>1.579</b>	<b>1781</b>	<b>1737</b>	<b>84.00</b>	<b>1.737</b>	<b>72.7</b>	<b>82.1</b>	<b>26.4</b>
	115.0	113.9	152.6	23.11	22.73	1.529	2259	1717	104.79	2.142	70.7	85.0	26.6
	115.0	109.4	146.6	27.74	27.33	1.468	2767	1695	126.19	2.547	68.7	86.7	26.6
	115.0	104.8	140.9	32.49	32.07	1.421	3257	1672	142.82	2.842	65.1	87.2	26.7
	115.0	99.8	135.6	37.21	36.81	1.379	3717	1646	157.03	3.078	61.8	86.9	27.0
	115.0	94.8	130.4	42.04	41.68	1.331	4177	1619	168.68	3.251	58.1	86.4	27.1
	115.0	90.6	125.5	45.90	45.58	1.278	4527	1587	177.18	3.347	55.2	85.8	27.0
	115.0	85.6	120.5	50.12	49.77	1.235	4894	1556	180.97	3.351	51.1	84.9	27.2
	115.0	80.3	116.2	54.78	54.49	1.195	5285	1519	183.80	3.324	46.9	83.9	27.3
<b>BDT OZ-FT</b>	<b>115.0</b>	<b>76.4</b>	<b>113.6</b>	<b>58.02</b>	<b>57.77</b>	<b>1.179</b>	<b>5541</b>	<b>1493</b>	<b>186.20</b>	<b>3.310</b>	<b>44.6</b>	<b>83.0</b>	<b>27.5</b>
	115.0	74.5	112.2	59.40	59.16	1.169	5648	1482	183.54	3.238	42.8	82.7	27.6
	115.0	69.2	109.2	63.87	63.70	1.136	5979	1438	179.67	3.075	38.4	81.4	27.6
	115.0	63.9	106.4	67.94	67.82	1.111	6255	1392	172.78	2.864	34.2	80.1	27.7
	115.0	58.8	104.5	71.85	71.77	1.099	6504	1342	164.66	2.631	30.2	78.7	27.9
	115.0	53.9	103.0	75.49	75.47	1.082	6717	1290	152.12	2.336	25.9	77.4	27.9
	115.0	48.9	101.9	78.87	78.93	1.070	6897	1231	140.52	2.060	22.3	76.0	27.9
	115.0	44.3	101.5	82.09	82.20	1.073	7052	1169	124.71	1.736	18.4	74.7	28.1
	115.0	39.9	101.8	85.08	85.19	1.074	7165	1101	106.47	1.396	14.5	73.2	28.0
	115.0	35.4	101.6	87.64	87.85	1.052	7260	1028	89.20	1.092	11.2	72.0	27.5
	115.0	32.0	101.9	90.03	90.26	1.071	7338	950	71.59	0.810	8.2	70.9	27.9
	115.0	28.1	101.7	92.11	92.39	1.072	7369	866	47.98	0.495	5.0	69.6	28.0
	115.0	25.3	100.9	93.82	94.15	1.087	7350	777	28.25	0.261	2.7	68.1	28.6
	115.0	22.3	99.8	94.58	94.98	1.053	7250	682	13.34	0.108	1.1	66.7	28.0
	115.0	15.8	103.4	93.64	94.07	1.091	7113	582	28.26	0.196	2.1	66.1	28.0
	115.0	10.4	109.8	93.62	94.09	1.100	7273	480	54.87	0.313	3.2	67.6	26.6
	115.0	8.4	112.1	95.23	95.72	1.092	7415	361	38.44	0.165	1.7	67.7	25.8
	115.0	6.4	112.4	96.34	96.86	1.081	7471	234	20.83	0.058	0.6	67.4	25.5
	115.0	4.9	114.7	96.69	97.21	1.096	7490	102	17.22	0.021	0.2	67.4	25.4

DRAWING NO.	PAGE 3 of 8	REV.
6K886BG		-

Dayton Electric Mfg. Co. Lake Forest, IL 60045 USA

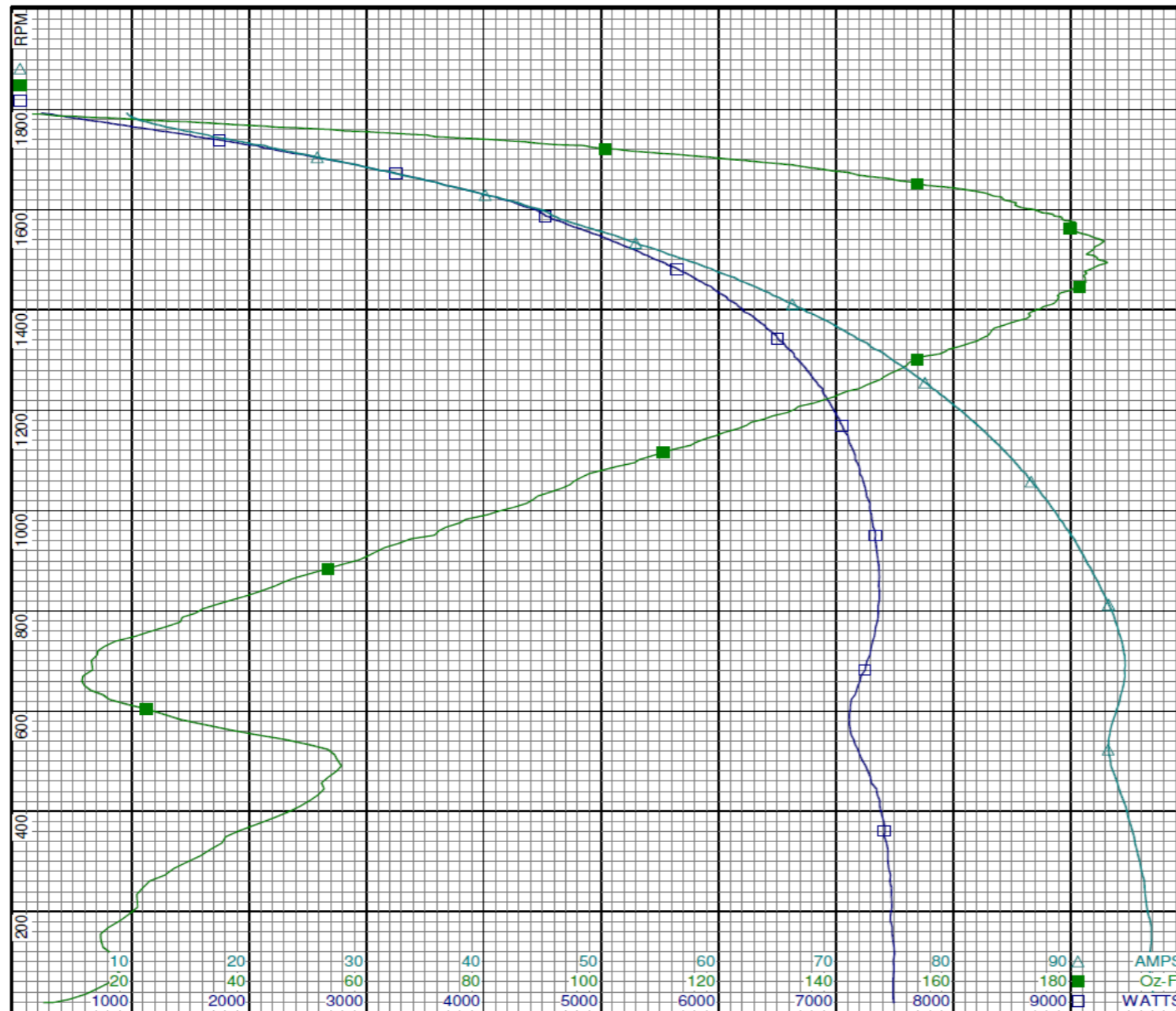
# Performance Data



6K886BG

REV.

-



**Curve Descriptions:**

Motor(1) Test 6 Run 115V 60 Hz 4P

- SPEED vs WATTS
- SPEED vs TORQUE
- △ SPEED vs ILine

**Motor Ratings:**

T063BHE223901 6K886BG

DRAWING NO.	PAGE 4 of 8	REV.
6K886BG		-

**Dayton Electric Mfg. Co. Lake Forest, IL 60045 USA**

# Performance Data



**6K886BG**      REV.  
-

## Dayton Manufacturing Company

### Motor Description

Model: T063BHE223901 6K886BG  
 Motor ID: 1  
 Poles: 4  
 Volts: 115/230  
 Frequency: 60  
 HP: 1.5  
 Speed: 1745  
 Phase: 1  
 Protector: BED2975

### Test Conditions

Test Type: Start  
 Test Number: 45  
 Poles: 4  
 Volts: 230  
 Hz: 60  
 Rotation:  
 Special Cond:  
 Speed Conn:  
 TestBoard: Amtps Performance Fixture #2  
 Run Cap: 25 µfd  
 Start Cap: 896 µfd  
 Environment:  
 Tested: 10/14/2009 10:09:50 AM  
 Tested By: Sharp, Gerald  
 Gear Ratio: 1:1  
 Bearing Friction: -0.48 Oz-Ft  
 Windage Torque: -2.72 Oz-Ft

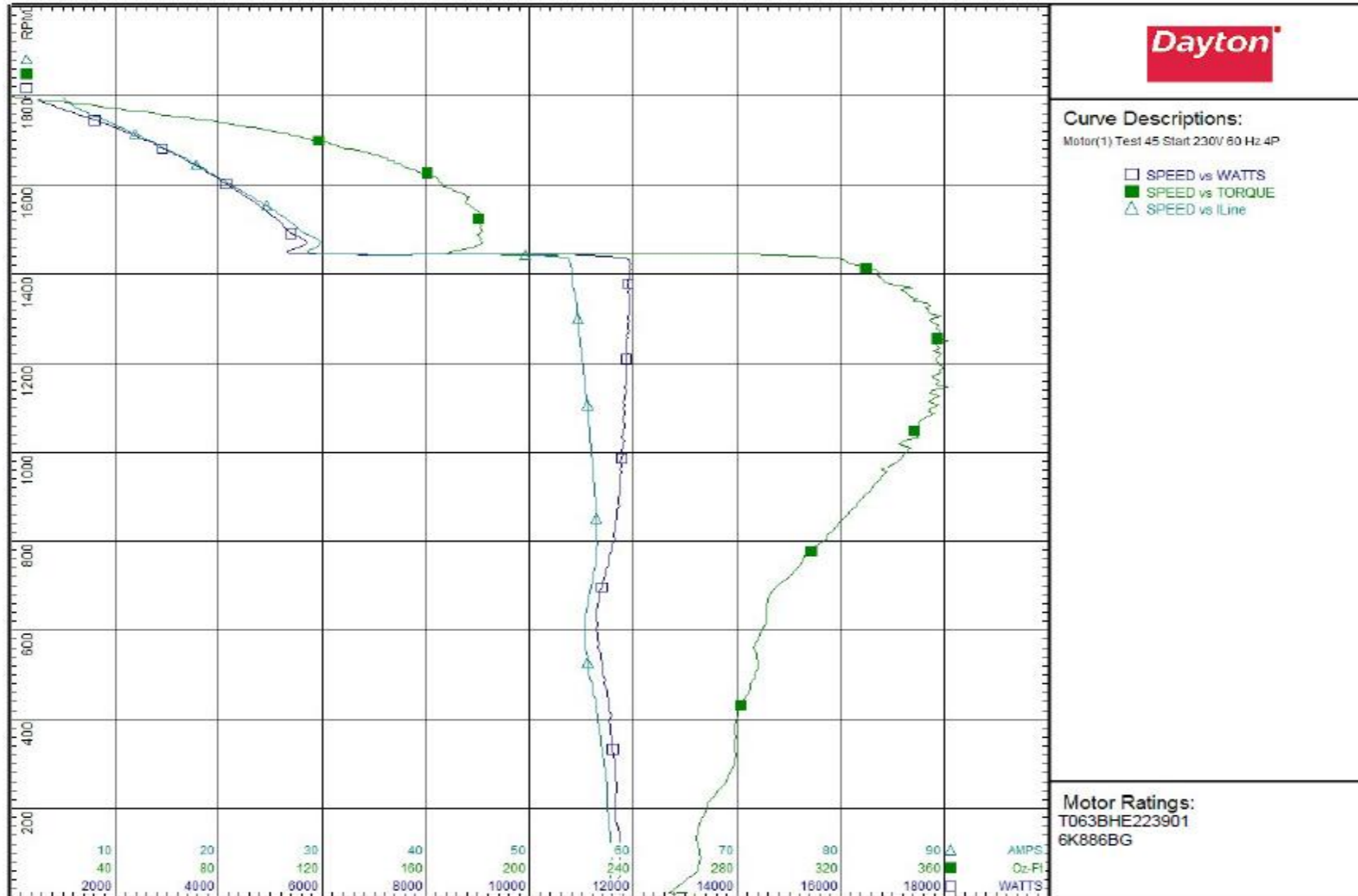
Special Points	Vline (V)	Vaux (V)	Vcap (V)	Iline (A)	Imain (A)	Iaux (A)	Watts	RPM	Tq (Oz-ft)	HP	Eff (%)	PF (%)	Cap
PUT OZ-FT	230.0	186.6	124.2	58.03	51.65	42.74	11741	12	260.8	0.036	0.2	88.0	912.8
	230.0	186.2	124.1	57.82	51.49	42.81	11723	11	253.8	0.035	0.2	88.2	914.9
	230.0	187.7	123.2	57.82	50.99	42.49	11746	57	264.2	0.178	1.1	88.3	914.5
	230.0	191.1	120.4	57.48	49.49	41.33	11660	214	268.9	0.684	4.4	88.2	910.4
	230.0	194.1	118.4	56.83	47.48	40.59	11572	359	279.7	1.196	7.7	88.5	909.6
	230.0	197.0	115.7	55.86	45.63	39.56	11451	490	286.8	1.675	10.9	89.1	907.4
	230.0	202.0	110.9	55.37	43.93	37.79	11302	613	291.1	2.124	14.0	88.7	904.3
	230.0	209.7	108.2	56.18	41.87	36.82	11468	727	301.6	2.610	17.0	88.7	902.7
	230.0	216.1	107.8	56.44	39.06	36.72	11657	833	318.7	3.161	20.2	89.8	903.3
	230.0	222.0	107.4	56.23	36.11	36.52	11736	929	333.2	3.686	23.4	90.8	902.5
	230.0	228.8	106.8	55.91	33.02	36.37	11808	1018	342.4	4.149	26.2	91.8	903.5
	230.0	235.3	106.7	55.63	29.85	36.25	11818	1100	355.2	4.649	29.3	92.4	901.6
	230.0	242.5	106.5	55.26	26.72	36.29	11858	1172	355.3	4.958	31.2	93.3	903.8
	230.0	249.9	107.2	54.92	23.57	36.54	11867	1239	356.9	5.265	33.1	94.0	904.4
	230.0	258.1	108.8	54.68	20.34	37.19	11900	1300	354.8	5.494	34.4	94.6	906.7
	230.0	266.0	110.8	54.35	17.45	38.03	11908	1355	345.8	5.579	35.0	95.3	910.6
	230.0	274.9	114.3	54.06	14.82	39.34	11934	1405	334.6	5.597	35.0	96.0	913.1
	230.0	228.6	111.4	45.71	24.74	25.48	9594	1445	253.0	4.352	33.8	91.3	606.7
	230.0	165.0	113.2	29.72	28.73	1.93	5674	1476	181.3	3.185	41.9	83.0	45.2
	230.0	164.7	118.1	26.75	26.47	1.20	5156	1521	180.0	3.258	47.1	83.8	26.9
	230.0	166.5	123.2	24.18	23.89	1.19	4713	1560	175.6	3.260	51.6	84.7	25.6
	230.0	168.3	128.1	21.70	21.40	1.22	4270	1594	168.5	3.197	55.9	85.6	25.3
	230.0	169.2	133.1	19.36	19.03	1.24	3832	1626	160.3	3.105	60.4	86.1	24.8
	230.0	170.0	138.4	17.31	16.95	1.30	3430	1654	147.9	2.912	63.3	86.2	25.0
	230.0	170.7	143.8	15.20	14.84	1.37	3004	1679	133.3	2.664	66.2	85.9	25.2
	230.0	171.0	149.0	13.17	12.83	1.41	2574	1702	116.6	2.362	68.5	85.0	25.1
	230.0	171.7	154.4	11.15	10.87	1.46	2139	1723	99.6	2.042	71.2	83.4	25.2
	230.0	171.3	160.2	9.10	8.95	1.54	1659	1744	76.7	1.593	71.6	79.2	25.4
	230.0	170.6	166.7	7.14	7.25	1.59	1159	1765	51.4	1.080	69.5	70.6	25.3
	230.0	168.8	173.0	5.62	6.18	1.62	671	1783	24.5	0.521	57.9	51.9	24.8
	230.0	166.7	179.2	4.99	6.06	1.66	252	1799	0.0	0.000	0.0	21.9	24.5

DRAWING NO.      PAGE 5 of 8      REV.  
 6K886BG      -

# Performance Data



**6K886BG**      REV. -



DRAWING NO.      PAGE 6 of 8      REV.  
6K886BG      -

**Dayton Electric Mfg. Co. Lake Forest, IL 60045 USA**



# Performance Data



**6K886BG**

REV.

-

## Dayton Manufacturing Company

### Motor Description

Model: T063BHE223901 6K886BG  
 Motor ID: 1  
 Poles: 4  
 Volts: 115/230  
 Frequency: 60  
 HP: 1.5  
 Speed: 1745  
 Phase: 1  
 Protector: BED2975

### Test Conditions

Test Type: Run  
 Test Number: 7  
 Poles: 4  
 Volts: 230  
 Hz: 60  
 Rotation:  
 Special Cond:  
 Speed Conn:  
 TestBoard: Amtps Performance Fixture #2  
 Run Cap: 25 µfd  
 Start Cap: 896 µfd  
 Environment:  
 Tested: 10/14/2009 8:51:47 AM  
 Tested By: Sharp, Gerald  
 Gear Ratio: 1:1  
 Bearing Friction: -0.48 Oz-Ft  
 Windage Torque: -2.72 Oz-Ft

Special Points	Vline (V)	Vaux (V)	Vcap (V)	Iline (A)	Imain (A)	Iaux (A)	Watts	RPM	Tq (Oz-ft)	HP	Eff (%)	PF (%)	Cap
	230.0	168.2	180.8	4.80	5.91	1.743	208	1794	0.00	0.000	0.0	18.8	25.6
	230.0	170.0	173.1	5.52	6.00	1.692	704	1776	28.59	0.604	64.1	55.4	25.9
	230.0	171.7	166.2	7.15	7.19	1.649	1202	1759	55.67	1.166	72.3	73.1	26.3
<b>73 OZ-FT</b>	<b>230.0</b>	<b>172.1</b>	<b>161.6</b>	<b>8.52</b>	<b>8.38</b>	<b>1.609</b>	<b>1547</b>	<b>1746</b>	<b>73.00</b>	<b>1.517</b>	<b>73.2</b>	<b>78.9</b>	<b>26.4</b>
<b>1.5 HP</b>	<b>230.0</b>	<b>172.1</b>	<b>162.0</b>	<b>8.42</b>	<b>8.28</b>	<b>1.612</b>	<b>1524</b>	<b>1747</b>	<b>72.13</b>	<b>1.500</b>	<b>73.4</b>	<b>78.7</b>	<b>26.4</b>
<b>1745 RPM</b>	<b>230.0</b>	<b>172.1</b>	<b>161.3</b>	<b>8.61</b>	<b>8.46</b>	<b>1.607</b>	<b>1568</b>	<b>1745</b>	<b>73.88</b>	<b>1.535</b>	<b>73.0</b>	<b>79.2</b>	<b>26.4</b>
	230.0	172.0	159.8	9.22	9.02	1.590	1709	1740	80.65	1.670	72.9	80.5	26.4
<b>84 OZ-FT</b>	<b>230.0</b>	<b>172.0</b>	<b>159.1</b>	<b>9.49</b>	<b>9.27</b>	<b>1.583</b>	<b>1769</b>	<b>1737</b>	<b>84.00</b>	<b>1.737</b>	<b>73.3</b>	<b>81.0</b>	<b>26.4</b>
	230.0	172.3	154.1	11.29	10.98	1.529	2185	1720	103.45	2.118	72.3	84.2	26.3
	230.0	172.3	148.6	13.37	13.00	1.481	2631	1699	123.08	2.489	70.6	85.6	26.4
	230.0	172.9	143.6	14.99	14.61	1.423	2990	1674	136.00	2.710	67.6	86.7	26.3
	230.0	172.4	138.7	17.03	16.66	1.379	3399	1649	151.55	2.974	65.3	86.8	26.4
	230.0	171.5	133.4	19.31	18.95	1.336	3843	1621	164.37	3.172	61.6	86.5	26.6
	230.0	170.1	128.0	21.70	21.38	1.286	4294	1592	177.62	3.366	58.5	86.0	26.7
	230.0	168.4	122.8	24.08	23.78	1.247	4726	1559	181.60	3.371	53.2	85.3	26.9
	230.0	166.4	118.2	26.45	26.20	1.209	5128	1524	187.87	3.408	49.6	84.3	27.1
<b>BDT OZ-FT</b>	<b>230.0</b>	<b>164.6</b>	<b>114.7</b>	<b>28.29</b>	<b>28.09</b>	<b>1.172</b>	<b>5426</b>	<b>1494</b>	<b>190.78</b>	<b>3.394</b>	<b>46.7</b>	<b>83.4</b>	<b>27.1</b>
	230.0	164.3	113.7	28.75	28.55	1.164	5499	1486	189.38	3.349	45.4	83.2	27.1
	230.0	162.4	110.0	31.00	30.86	1.141	5852	1444	189.04	3.250	41.4	82.1	27.5
	230.0	159.1	106.6	33.33	33.26	1.108	6169	1400	181.00	3.017	36.5	80.5	27.6
	230.0	156.6	104.0	35.44	35.44	1.083	6454	1349	172.54	2.771	32.0	79.2	27.6
	230.0	154.2	102.0	37.36	37.40	1.068	6685	1295	163.81	2.526	28.2	77.8	27.8
	230.0	151.3	100.4	39.20	39.30	1.054	6889	1238	148.98	2.196	23.8	76.4	27.8
	230.0	148.9	99.4	40.89	41.05	1.043	7063	1176	134.85	1.888	19.9	75.1	27.8
	230.0	146.0	98.8	42.43	42.64	1.043	7188	1109	116.94	1.544	16.0	73.7	28.0
	230.0	143.4	98.7	43.87	44.13	1.034	7298	1036	98.52	1.215	12.4	72.3	27.8
	230.0	141.2	98.8	45.17	45.48	1.049	7377	958	78.56	0.896	9.1	71.0	28.2
	230.0	139.4	98.8	46.31	46.67	1.049	7428	874	54.73	0.569	5.7	69.7	28.2
	230.0	138.2	97.7	47.18	47.63	1.047	7397	786	33.20	0.311	3.1	68.2	28.4
	230.0	137.6	96.6	47.63	48.11	1.022	7312	690	15.47	0.127	1.3	66.7	28.1
	230.0	133.3	99.3	47.29	47.81	1.051	7183	592	28.69	0.202	2.1	66.0	28.1
	230.0	126.7	105.3	47.18	47.78	1.083	7294	490	53.98	0.315	3.2	67.2	27.3
	230.0	123.8	107.9	47.91	48.52	1.060	7456	374	41.32	0.184	1.8	67.7	26.1
	230.0	123.0	108.8	48.51	49.14	1.043	7528	246	25.11	0.074	0.7	67.5	25.4
	230.0	121.0	110.7	48.79	49.45	1.061	7521	114	16.48	0.022	0.2	67.0	25.4
	230.0	118.1	113.2	48.94	49.63	1.078	7564	22	2.31	0.001	0.0	67.2	25.3

DRAWING NO. PAGE 7 of 8 REV.  
**6K886BG** -

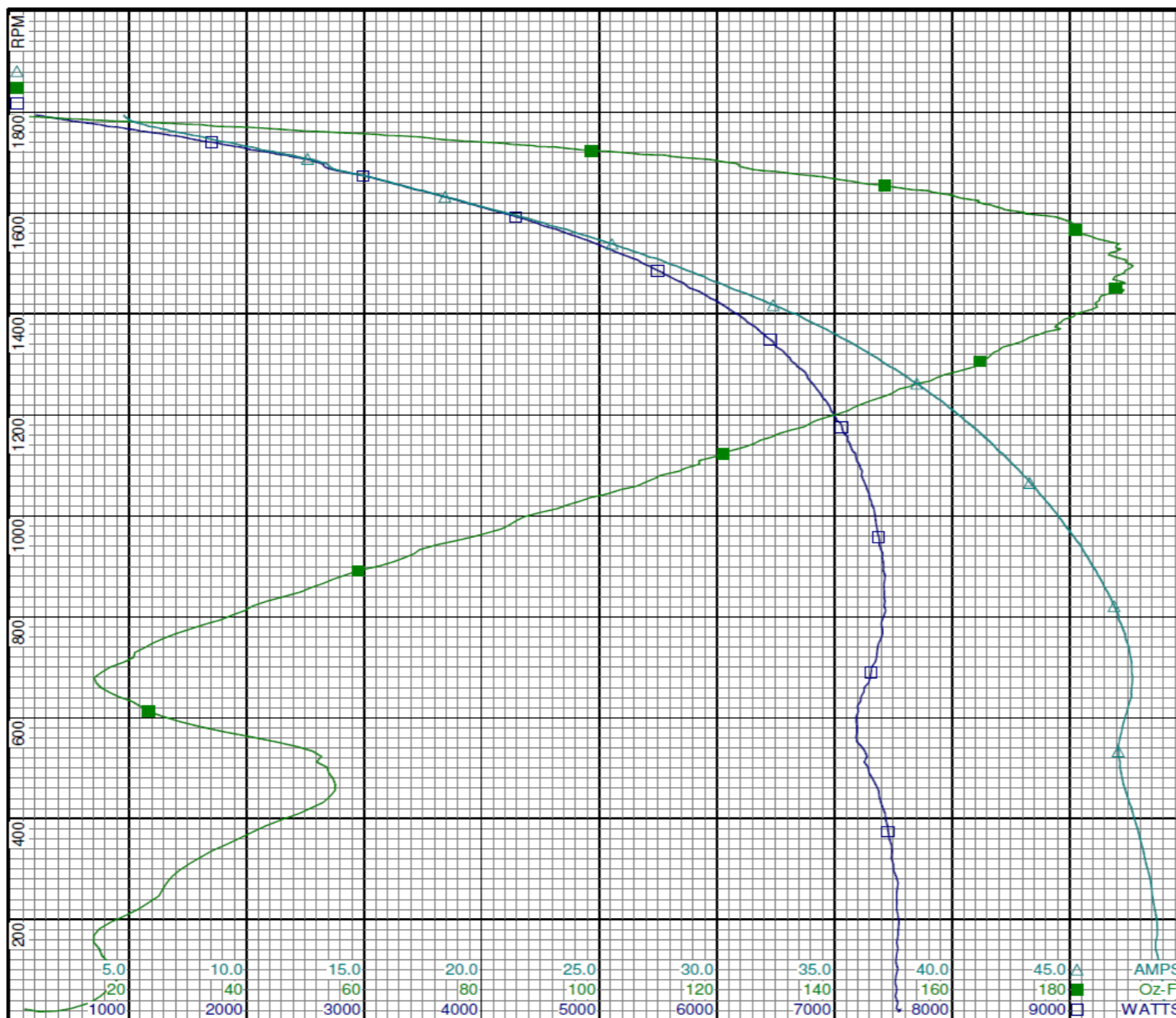
# Performance Data



6K886BG

REV.

-



**Curve Descriptions:**

Motor(1) Test 7 Run 230V 60 Hz 4P

- SPEED vs WATTS
- SPEED vs TORQUE
- △ SPEED vs ILine

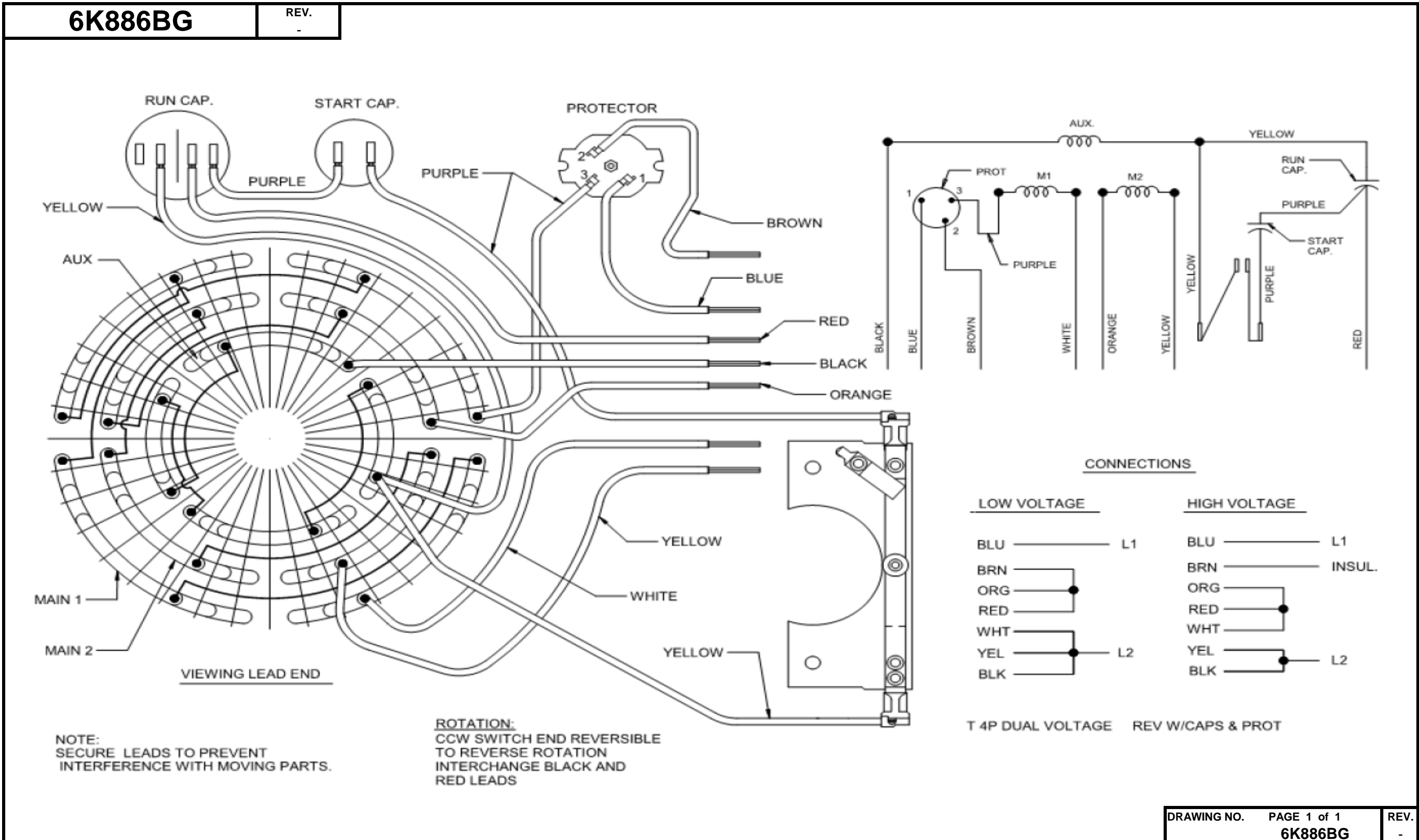
**Motor Ratings:**

T063BHE223901 6K886BG

DRAWING NO.	PAGE 8 of 8	REV.
6K886BG		-

Dayton Electric Mfg. Co. Lake Forest, IL 60045 USA

# Wiring Diagram



**Dayton**<sup>®</sup>**FARM DUTY MOTOR**

HP: 1 1/2

VOLTS: 115/230

AMPS: 19.2/10.1

RPM: 1725

DUTY: CONT

SF: 1.15

KVA CODE: K

ENCL: TEFC

THERMALLY PROTECTED: MANUAL

MFG. NO. PROT. CODE: 09082AVG. F.L.  
EFF.

MTR REF: T63YZBHE-2239

Part  
No 6K886BG**BAR CODE**

PH: 1

HZ: 60

FR: 143T

INS CL: F

AMB: 40 °C

SFA: 20.8/10.9

Disconnect Power Before Making Any  
Electrical Connections or Changes

## CONNECTIONS

UNGROUND  
SIDE OF LINE

BLU

BRN

RED

ORG

WHT

YEL

BLK

INS  
LOW  
VOLT  
LINE

BLU

WHT

RED

ORG

BRN

YEL

BLK

INS  
HIGH  
VOLT  
LINEMOTOR IS CCW ROTATION LEAD END  
TO REVERSE ROTATION INTERCHANGE  
RED AND BLACK LEADS

E47479



258501

Mfd for Dayton Electric Mfg. Co., Lake Forest, IL 60045 USA

Made in Mexico