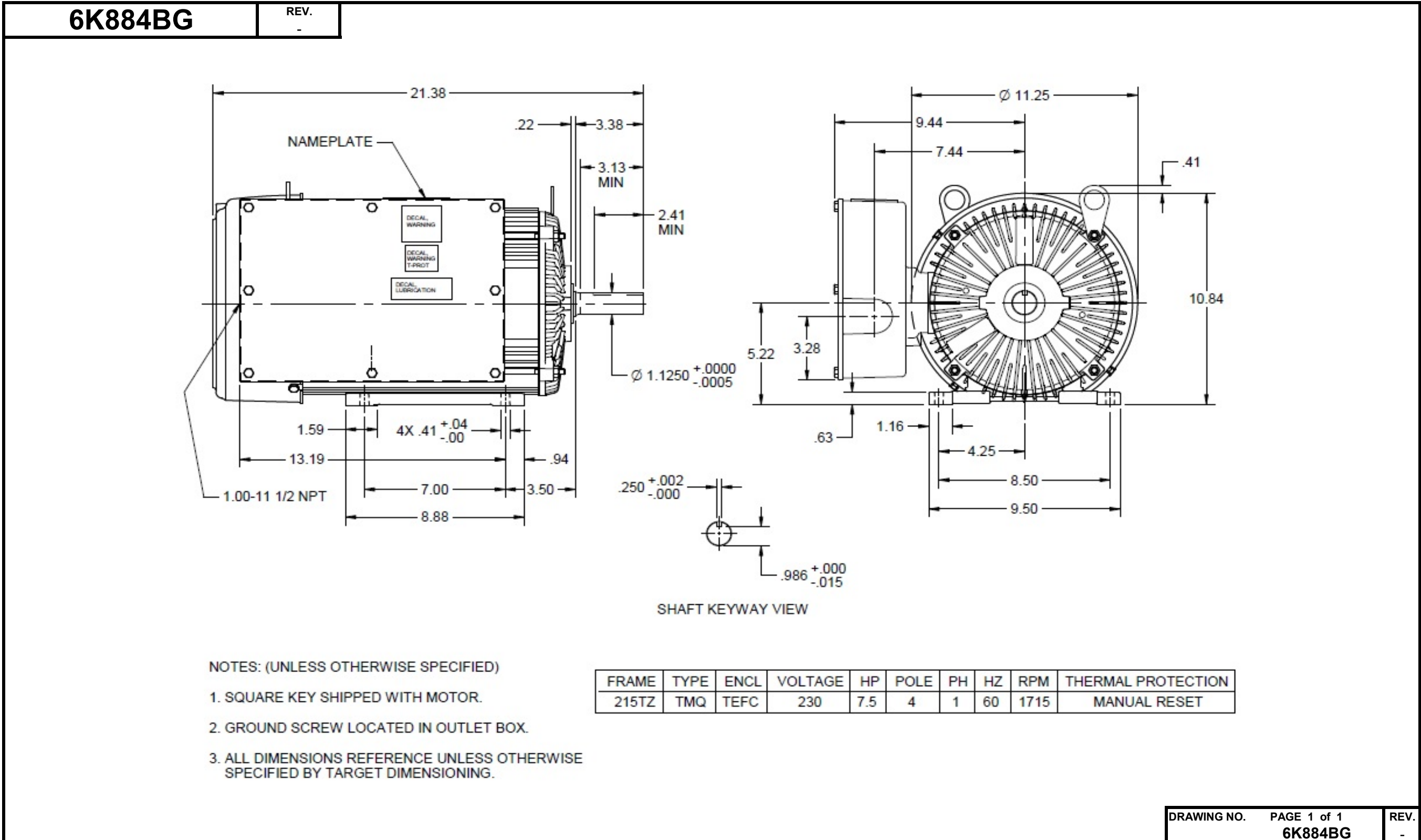


Dimensional Drawing



Dayton Electric Mfg. Co. Lake Forest, IL 60045 USA

Performance Data



6K884BG

REV.
X

MOTOR PERFORMANCE

MODEL NO.	SKU NO.	PHASE	TYPE	FRAME
6K884BG	6K884BG	1	TMQ	215TZ

ORDER NO.	NA	LINE NO.

HP:	7.5
POLES:	4
HZ:	60
SERVICE FACTOR:	1.15
DUTY CYCLE:	CONTINUOUS
ALTITUDE (FASL) FT:	3300
MAX AMBIENT:	40°C
ENCLOSURE:	TE
INSULATION CLASS:	F
VOLTS:	230
EFFICIENCY (%):	
S.F.	79.6
FULL	83.0
3/4	84.6
1/2	82.4
1/4	72.1
POWER FACTOR (%):	
S.F.	93.4
FULL	94.5
3/4	95.7
1/2	95.7
1/4	92.8
AMPS:	
S.F.	37.3
FULL	30.8
3/4	22.7
1/2	15.6
1/4	9.2
NO LOAD	3.0
LOCKED ROTOR AMPS:	200
NEMA CODE LETTER	G
NEMA DESIGN LETTER	L
FULL LOAD RPM	1715
THERMAL PROTECTION	MANUAL RESET
TORQUES:	
BREAKDOWN{LB-FT}	52.0
LOCKED ROTOR{LB-FT}	81.0
FULL LOAD{LB-FT}	21.9

NEMA Nominal and Guaranteed Efficiencies are up to 3,300 feet above sea level and 25 ° C ambient

DRAWING NO.	PAGE 1 of 2	REV.
	6K884BG	X

Dayton Electric Mfg. Co. Lake Forest, IL 60045 USA

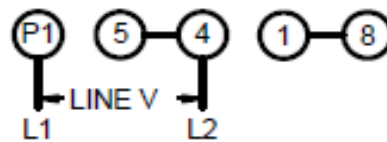
6K884BG

REV.
0

Motor Wiring Diagram

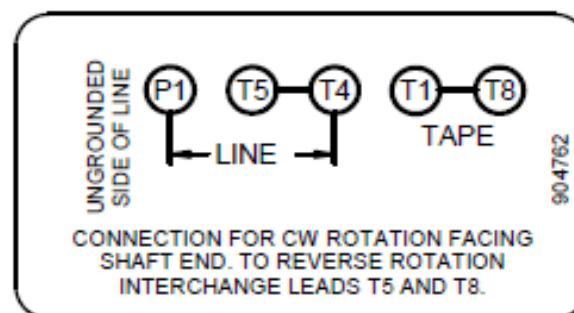
5 Lead, Single Phase, Single Voltage,
Thermally Protected, CW Rotation

**SINGLE PHASE THERMALLY PROTECTED
PROTECTION THERMIQUE INHERENTE
MOTOR LEAD CONNECTIONS**



CONNECTION FOR CW ROTATION
FACING SHAFT END. TO REVERSE ROTATION
INTERCHANGE LEADS 5 AND 8.
MOTOR MUST BE GROUNDED (USE GREEN LEAD IF
SUPPLIED) PER THE NATIONAL ELECTRIC CODE.

912541



Connected for CW Rotation Facing the Shaft End.

To Reverse Direction of Rotation, Interchange Leads 5 & 8.

Each lead may have one or more cables comprising that lead.
In such case, cable will be marked with the appropriate lead number.

DRAWING NO.	PAGE 1 of 1	REV.
6K884BG		0

Dayton**Farm Duty Motor**

D 258525

MODEL NO **6K884BG**VOLTS **230**HP **7.5**RPM **1715**AMPS **30.8**PH **1** FRAME **215TZ**TYPE **TMQ**SFA **37.3**MOTOR
REFSF **1.15**HZ **60**NEMA
DESIGN **L**INSUL
CLASS **F**ENCL **TEFC**MAX
AMB **40 C**LR KVA
CODE **G**THERMALLY
PROTECTED **MANUAL RESET**DUTY **CONT**SHAFT
END BRG **6208**OFP
END BRG **6205**

Make sure that voltage, phase and freq of line agrees with values given on this plate. Connect per wiring diagram supplied with motor.

Manufactured for Dayton Electric Mfg. Co., Lake Forest, IL 60045 U.S.A.

Made in Mexico

2010632