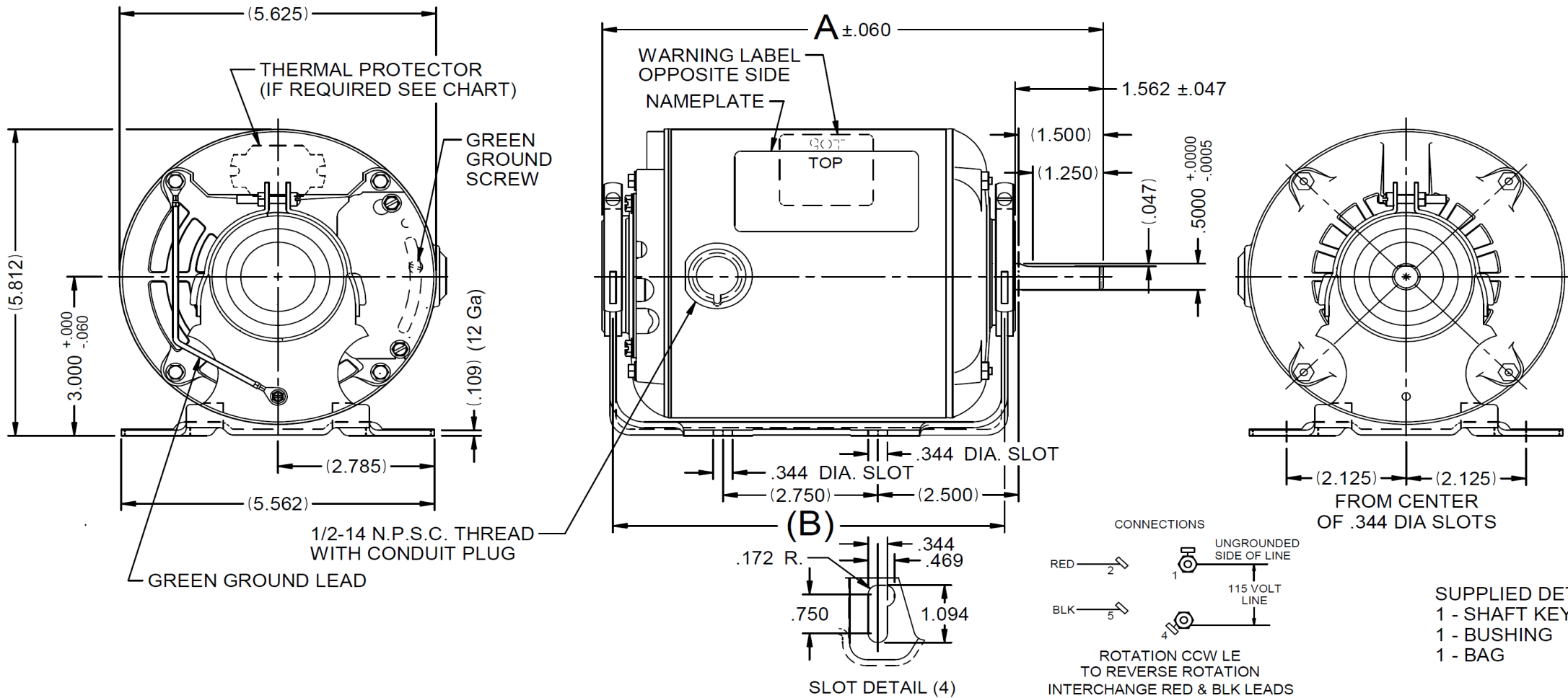


Dimensional Drawing



6K778BG REV. -

VAR	MODEL	CUST. PT. NO.	A	B	C	D	HP	VOLTS	SF	AMPS	HZ	RPM	CONN VOLTS	PROT.	DESCRIPTION / REMARKS
001	S55JXGWJ-8488	6K778BG	9.901	7.931	-----	-----	1/3	115	1.35	5.8	60	1725	---	AUTO	48, ODP, BALL BEARING



DRAWING NO. PAGE 1 of 1 REV. -
6K778BG

©2019 W.W. Grainger, Inc. This design may not be reproduced, modified or redistributed without written permission from W.W. Grainger, Inc.

Performance Data



6K778BG

REV.
-

6K857BG

MOTOR PERFORMANCE

HP:	1/3HP							
Poles:	4P							
No. of Speeds:	1							
Volts:	115	115						
HZ:	60	60						
Service Factor:	1.35							
Efficiency:	@ Rated Load	65.1						
Power Factor:	@ Rated Load	66						
Amps:	@ No Load							
	@ Rated Load	5.1						
	@ Service Factor	6.01						
	@ Locked Rotor	32.7						
RPM:	@ Rated Load	1751						
Ambient (°C):	40							
Altitude (FASL):								
Torques:	Breakdown	40.5						
	Locked Rotor	20.2						
	Pull-Up	17.4						
	Rated Load	16.2						
	Service Factor	21.9						
Watts:	Rated Load	387.2						
KVA Code:								
Temperature Rise:	@ Rated Load	37.1						
	@ Service Factor	40						
Thermal Protector:	Trip Temp (°C)							
Winding Material:	Start (Auxiliary)					AI		
	Run (Main)					AI		
Capacitor(s):	Start (MFD / Volts)					N/A		
	No. of Start Capacitors							
	Run (MFD / Volts)					N/A		
	No. of Run Capacitors							
HP:								
Poles:								
Volts:								
HZ:								
Efficiency:	@ Rated Load							
Power Factor:	@ Rated Load							
Amps:	@ No Load							
	@ Rated Load							
	@ Service Factor							
	@ Locked Rotor							
Torques:	@ Rated Load							
	Locked Rotor							
	Pull-Up							
	Rated Load							
	Service Factor							
Watts:	@ Rated Load							
Temperature Rise:	@ Rated Load							
	@ Service Factor							

DRAWING NO. PAGE 1 REV.
6K778BG -

Dayton Electric Mfg. Co. Lake Forest, IL 60045

Performance Data



6K778BG	REV. -
----------------	-----------

Dayton Manufacturing Company

Motor Description

Model: S055GWJ848801 6K778BG
 Motor ID: 1
 Poles: 4
 Volts: 115
 Frequency: 60
 HP: 1/3
 Speed: 1725
 Phase: 1
 Protector: MEJ28AX

Test Conditions

Test Type: Start
 Test Number: 3
 Poles: 4
 Volts: 115
 Hz: 60
 Rotation:
 Special Cond:
 Speed Conn:
 TestBoard: Amtps Performance Fixture #4
 Run Cap: 0
 Start Cap: 0µfd
 Environment:
 Tested: 9/6/2012 3:08:13 PM
 Tested By: Sharp, Gerald
 Gear Ratio: 1:1
 Bearing Friction: 0.00 Oz-Ft
 Windage Torque: -0.97 Oz-Ft

Special Points	Vline(V)	Iline(A)	Imain(A)	Iaux(A)	Watts	RPM	Tq(Oz-ft)	HP	Eff(%)	PF(%)
	115.0	32.71	21.91	11.544	3139	35	20.25	0.009	0.2	83.4
	115.0	32.63	21.90	11.470	3130	42	20.27	0.010	0.2	83.4
	115.0	32.52	21.93	11.248	3117	175	17.45	0.036	0.9	83.3
PUT OZ-FT	115.0	32.52	21.93	11.248	3117	175	17.45	0.036	0.9	83.3
	115.0	32.33	21.87	11.017	3106	338	21.26	0.086	2.1	83.5
	115.0	32.06	21.73	10.769	3089	494	24.31	0.143	3.5	83.8
	115.0	31.70	21.53	10.516	3062	627	26.95	0.201	4.9	84.0
	115.0	31.30	21.27	10.279	3037	746	29.71	0.264	6.5	84.4
	115.0	30.85	20.95	10.064	3004	854	32.38	0.329	8.2	84.7
	115.0	30.37	20.59	9.861	2970	950	34.98	0.396	9.9	85.0
	115.0	29.84	20.19	9.667	2934	1039	37.29	0.461	11.7	85.5
	115.0	29.26	19.75	9.477	2889	1119	39.32	0.524	13.5	85.9
	115.0	28.66	19.29	9.305	2840	1190	41.17	0.583	15.3	86.2
	115.0	28.03	18.80	9.152	2788	1256	42.37	0.634	17.0	86.5
	115.0	27.36	18.27	9.024	2730	1316	43.24	0.677	18.5	86.8
	115.0	26.69	17.72	8.938	2673	1369	43.65	0.711	19.8	87.1
	115.0	26.02	17.16	8.888	2613	1416	43.56	0.734	21.0	87.4
	115.0	25.34	16.59	8.869	2550	1459	43.10	0.749	21.9	87.5
	115.0	24.67	16.01	8.888	2490	1497	42.54	0.758	22.7	87.8
	115.0	24.00	15.42	8.934	2424	1533	40.91	0.746	23.0	87.8
	115.0	23.34	14.84	9.009	2361	1563	38.79	0.722	22.8	87.9
	115.0	22.70	14.25	9.105	2296	1592	36.59	0.693	22.5	87.9
	115.0	22.09	13.67	9.229	2231	1618	34.02	0.655	21.9	87.8
	115.0	21.46	13.06	9.378	2166	1641	30.99	0.605	20.8	87.8
	115.0	20.86	12.48	9.527	2103	1663	27.78	0.550	19.5	87.6
	115.0	20.27	11.88	9.704	2036	1684	24.15	0.484	17.7	87.4
	115.0	19.71	11.27	9.899	1973	1702	20.27	0.411	15.5	87.0
	115.0	19.16	10.71	10.084	1909	1722	16.33	0.335	13.1	86.6
	115.0	18.56	10.07	10.295	1839	1739	11.64	0.241	9.8	86.2
	115.0	18.02	9.43	10.534	1772	1757	6.80	0.142	6.0	85.5
	115.0	17.44	8.68	10.811	1695	1774	1.10	0.023	1.0	84.5
	115.0	17.29	8.50	10.873	1676	1777	0.00	0.000	0.0	84.3

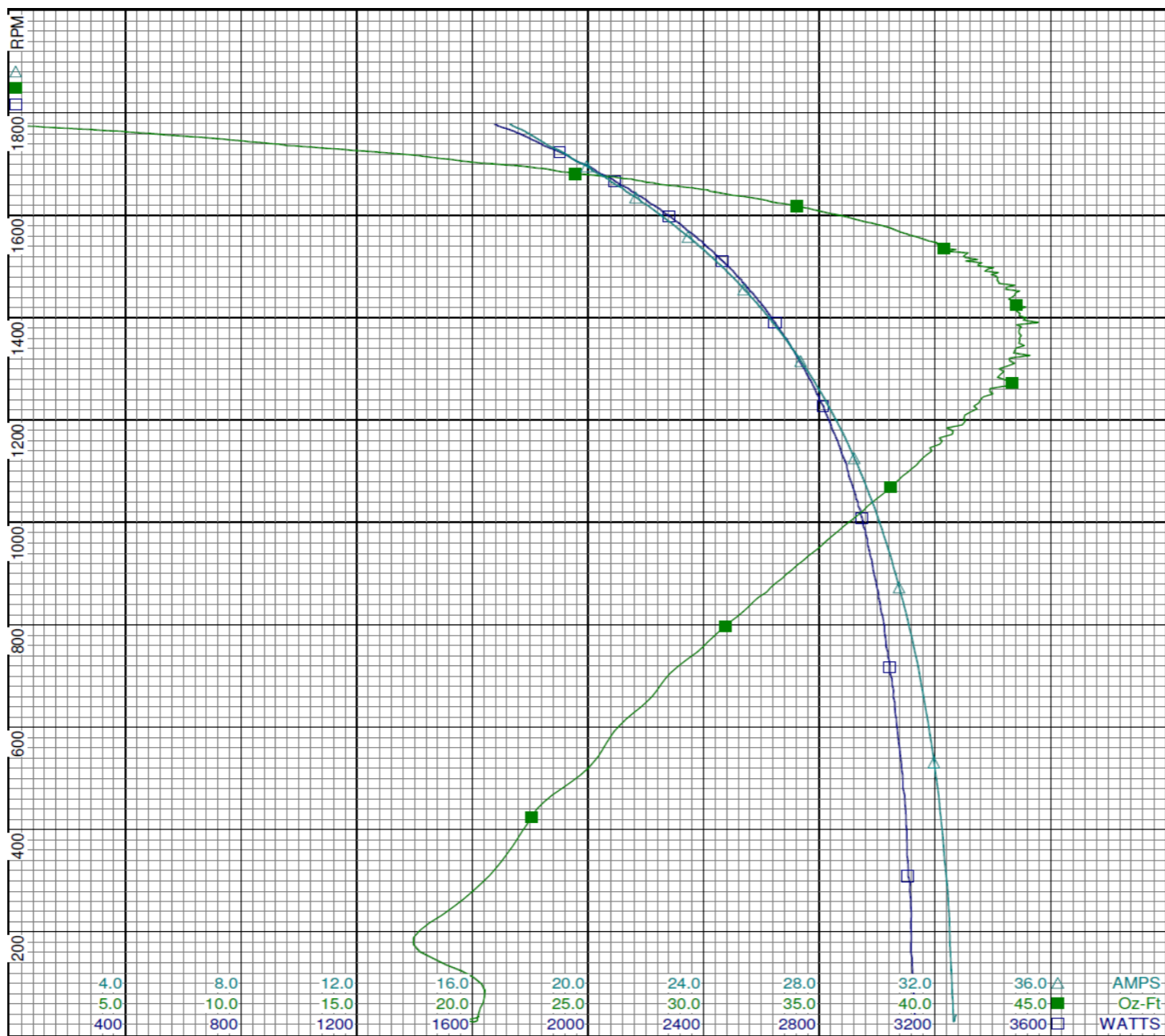
DRAWING NO.	PAGE 1 of 4	REV.
6K778BG		-

Dayton Electric Mfg. Co. Lake Forest, IL 60045 USA

Performance Data



6K778BG REV. -



Dayton

Curve Descriptions:
Motor(1) Test 3 Start 115V 60 Hz 4P

- SPEED vs WATTS
- SPEED vs TORQUE
- △ SPEED vs ILine

Motor Ratings:
S055GWJ848801 6K778BG

DRAWING NO. PAGE 2 of 4 REV.
6K778BG -

Dayton Electric Mfg. Co. Lake Forest, IL 60045 USA

Performance Data



6K778BG	REV. -
----------------	-----------

Dayton Manufacturing Company

Motor Description

Model: S055GWJ848801 6K778BG
 Motor ID: 1
 Poles: 4
 Volts: 115
 Frequency: 60
 HP: 1/3
 Speed: 1725
 Phase: 1
 Protector: MEJ28AX

Test Conditions

Test Type: Run
 Test Number: 4
 Poles: 4
 Volts: 115
 Hz: 60
 Rotation:
 Special Cond:
 Speed Conn:
 TestBoard: Aamps Performance Fixture #4
 Run Cap: 0
 Start Cap: 0µfd
 Environment:
 Tested: 9/6/2012 3:02:43 PM
 Tested By: Sharp, Gerald
 Gear Ratio: 1:1
 Bearing Friction: -0.23 Oz-Ft
 Windage Torque: -1.20 Oz-Ft

Special Points	Vline (V)	Iline (A)	Watts	RPM	Tq(Oz-ft)	HP	Eff (%)	PF (%)
	115.0	4.17	101.6	1795	0.00	0.000	0.0	21.2
	115.0	4.22	167.9	1782	4.05	0.086	38.2	34.6
	115.0	4.46	254.7	1771	9.08	0.191	56.1	49.6
	115.0	4.94	360.7	1755	14.89	0.311	64.3	63.5
0.333 HP	115.0	5.07	382.2	1752	15.96	0.333	65.0	65.6
16.2 OZ-FT	115.0	5.10	387.2	1751	16.20	0.338	65.1	66.0
	115.0	5.68	470.2	1739	20.09	0.416	66.0	71.9
20.3 OZ-FT	115.0	5.72	475.1	1738	20.30	0.420	66.0	72.2
21.9 OZ-FT	115.0	6.01	511.1	1731	21.90	0.451	65.9	73.9
1725 RPM	115.0	6.26	543.3	1725	23.30	0.479	65.7	75.4
	115.0	6.56	582.7	1718	24.98	0.511	65.4	77.3
	115.0	7.59	705.7	1695	29.63	0.598	63.2	80.9
	115.0	8.69	829.6	1669	33.69	0.669	60.2	83.0
	115.0	9.92	957.1	1636	36.87	0.718	56.0	83.9
	115.0	11.16	1079.2	1601	39.06	0.745	51.5	84.1
	115.0	12.38	1191.3	1561	40.20	0.747	46.8	83.7
BDT OZ-FT	115.0	13.08	1255.0	1535	40.57	0.742	44.1	83.5
	115.0	13.54	1294.5	1517	39.98	0.722	41.6	83.1
	115.0	14.61	1382.6	1470	39.47	0.691	37.3	82.3
	115.0	15.59	1461.2	1419	38.02	0.642	32.8	81.5
	115.0	16.45	1524.7	1366	36.18	0.588	28.8	80.6
	115.0	17.22	1577.9	1310	33.95	0.530	25.0	79.7
	115.0	17.91	1623.0	1252	31.50	0.469	21.6	78.8
	115.0	18.52	1662.3	1189	28.94	0.410	18.4	78.1
	115.0	19.07	1695.4	1124	26.24	0.351	15.5	77.3
	115.0	19.57	1721.9	1052	23.43	0.293	12.7	76.5
	115.0	20.02	1745.4	978	20.64	0.240	10.3	75.8
	115.0	20.42	1765.1	898	17.84	0.191	8.1	75.2
	115.0	20.78	1782.6	811	15.01	0.145	6.1	74.6
	115.0	21.09	1795.2	719	11.90	0.102	4.2	74.0
	115.0	21.35	1805.2	619	8.85	0.065	2.7	73.5
	115.0	21.53	1811.2	516	6.57	0.040	1.7	73.1
	115.0	21.69	1817.9	404	4.06	0.020	0.8	72.9
	115.0	21.79	1820.5	286	1.95	0.007	0.3	72.6
	115.0	21.84	1821.0	161	0.21	0.000	0.0	72.5
	115.0	21.85	1823.4	35	0.76	0.000	0.0	72.6

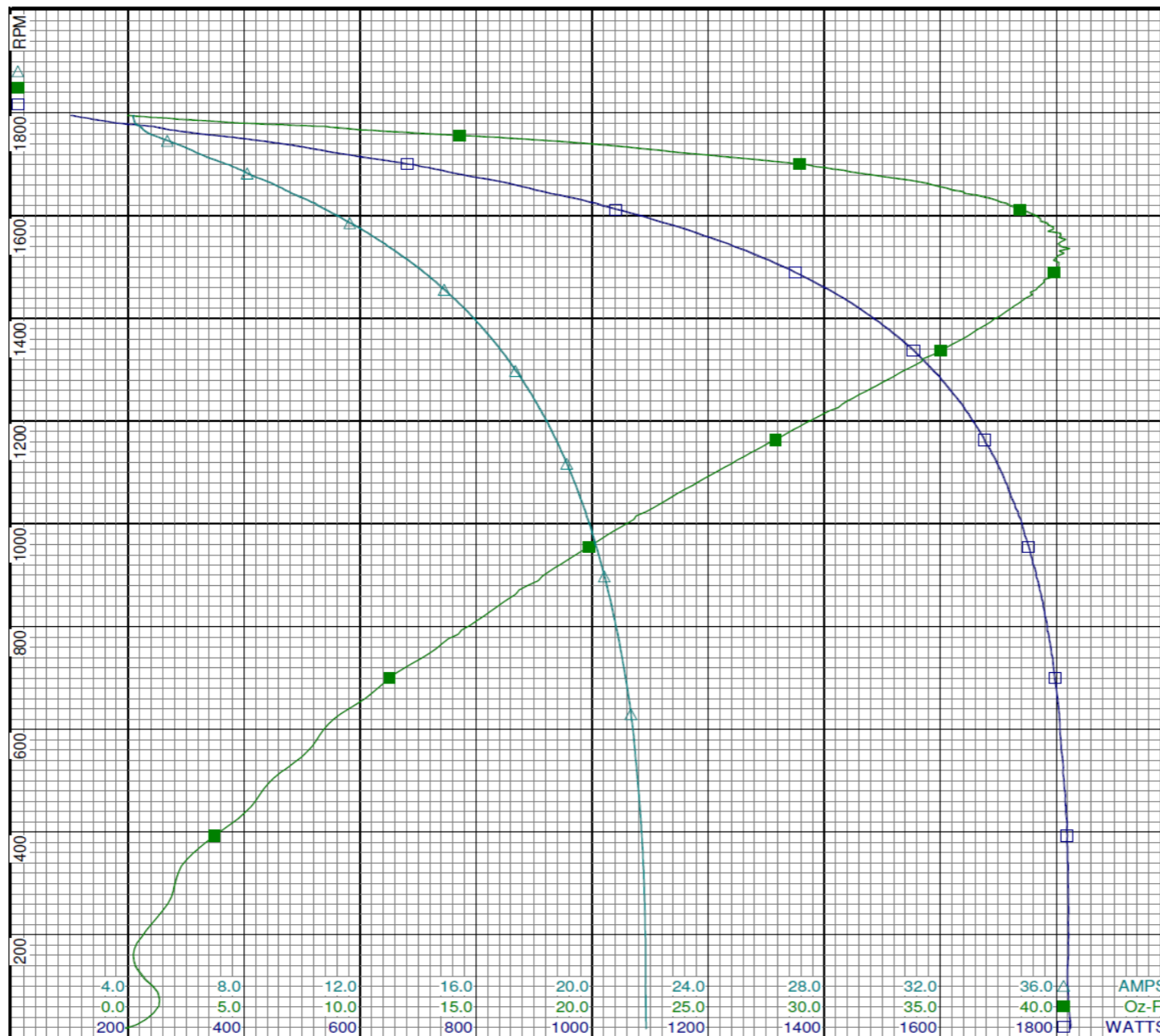
DRAWING NO.	PAGE 3 of 4	REV.
6K778BG		-

Dayton Electric Mfg. Co. Lake Forest, IL 60045 USA

Performance Data



6K778BG REV. -



Dayton

Curve Descriptions:
Motor(1) Test 4 Run 115V 60 Hz 4P

- SPEED vs WATTS
- SPEED vs TORQUE
- △ SPEED vs ILine

Motor Ratings:
S055GWJ848801 6K778BG

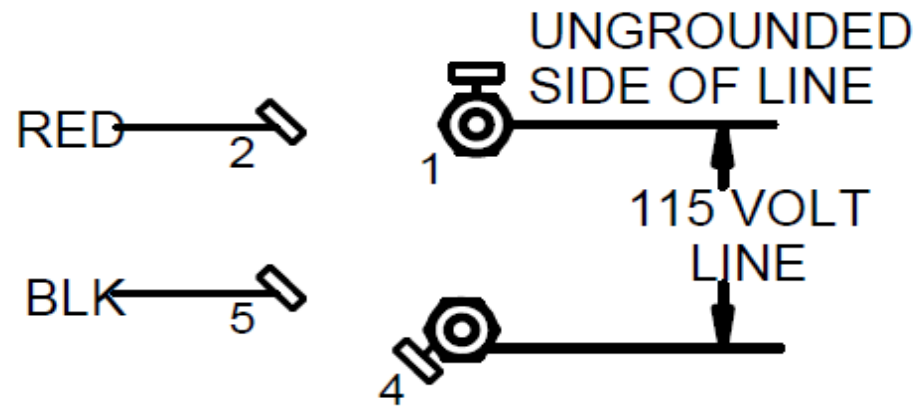
DRAWING NO.	PAGE 4 of 4	REV.
6K778BG		-

Dayton Electric Mfg. Co. Lake Forest, IL 60045 USA

6K778BG

REV.
-

CONNECTIONS

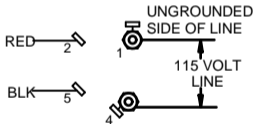


ROTATION CCW LE
TO REVERSE ROTATION
INTERCHANGE RED & BLK LEADS

DRAWING NO.	PAGE 1 of 1	REV.
6K778BG		-

Dayton[®]

BELT DRIVE FAN & BLOWER MOTOR

HP: 1/3
VOLTS: 115**AMPS:** 5.8
RPM: 1725
DUTY: CONT**SF:** 1.35
KVA CODE: N
ENCL: ODP**THERMALLY PROTECTED:** AUTO
MFG. NO. PROT. CODE: 04320
MTR REF: S55JXGWJ-8488**PH:** 1
HZ: 60
FR: 48
INS CL: B
AMB: 40 °C
SFA: 6.4AVG. F.L.
EFF.Part
No **6K778BG****Disconnect Power Before Making Any
Electrical Connections or Changes****CONNECTIONS****ROTATION CCW LE
TO REVERSE ROTATION
INTERCHANGE RED & BLK LEADS**

Mfd for Dayton Electric Mfg. Co., Lake Forest, IL 60045 USA

Made in Mexico