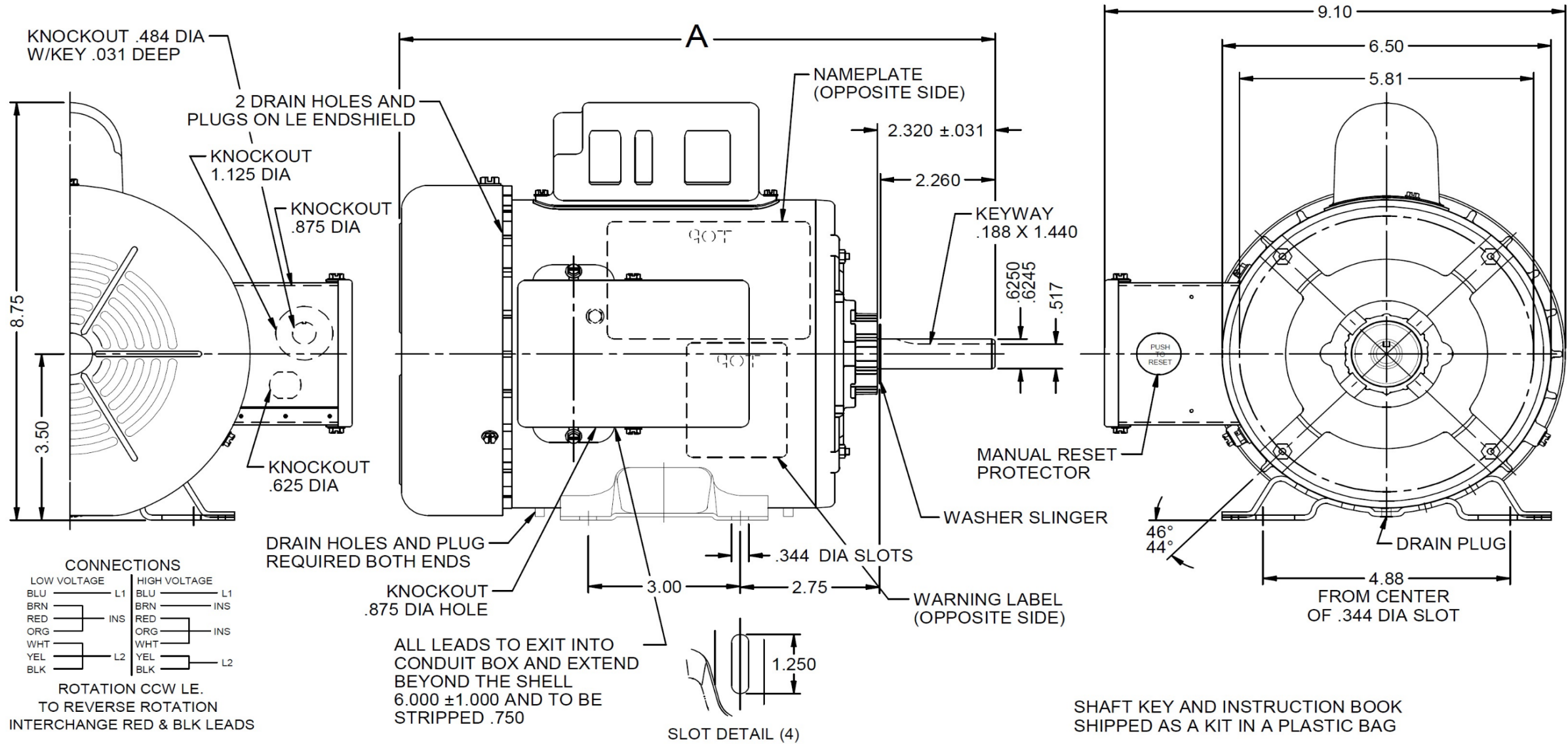


Dimensional Drawing

6K714BH REV. -

VAR	MODEL	CUST. PT. NO.	A	B	C	D	HP	VOLTS	SF	AMPS	HZ	RPM	CONN VOLTS	PROT.	DESCRIPTION / REMARKS
001	C63BXCJY-1304	6K714BH	11.76	-----	-----	-----	1/2	115/230	1.15	9.0/4.5	60	1725	---	MANUAL	56, TEFC, GREEN



DRAWING NO. PAGE 1 of 1 REV. -
6K714BH

Performance Data



6K714BH

REV.
-

MOTOR PERFORMANCE

HP:	1/2							
Poles:	4							
No. of Speeds:	1							
Volts:	115/230	115	230					
HZ:	60	60	60					
Service Factor:	1.15							
Efficiency:	@ Rated Load							
Power Factor:	@ Rated Load							
Amps:	@ No Load							
	@ Rated Load	8.5	4.2					
	@ Service Factor	8.9	4.5					
	@ Locked Rotor	40.7	20.5					
RPM:	@ Rated Load	1737	17.39					
Ambient (°C):	40							
Altitude (FASL):								
Torques:	Breakdown	63.3	63.2					
	Locked Rotor	84.3	71.2					
	Pull-Up	81.4	71.2					
	Rated Load	24.3	24.3					
	Service Factor	28	28					
Watts:	Rated Load	605	603					
KVA Code:	L	L	L					
Temperature Rise:	@ Rated Load	67.3	66.5					
	@ Service Factor	73.9	72.9					
Thermal Protector:	Trip Temp (°C)	184	185					
Winding Material:	Start (Auxiliary)	Cu	Cu					
	Run (Main)	Cu	Cu					
Capacitor(s):	Start (MFD / Volts)	367/165V						
	No. of Start Capacitors							
	Run (MFD / Volts)	NA						
	No. of Run Capacitors							
LOW SPEED PERFORMANCE DATA:								
HP:								
Poles:								
Volts:								
HZ:								
Efficiency:	@ Rated Load							
Power Factor:	@ Rated Load							
Amps:	@ No Load							
	@ Rated Load							
	@ Service Factor							
	@ Locked Rotor							
Torques:	Bead Down							
	Locked Rotor							
	Pull-Up							
	Rated Load							
	Service Factor							
Watts:	@ Rated Load							
Temperature Rise:	@ Rated Load							
	@ Service Factor							

DRAWING NO. PAGE 1 of 1 REV.
6K714BH -

Dayton Electric Mfg. Co. Lake Forest, IL 60045 USA

Performance Data



6K714BH REV.
-

Dayton Manufacturing Company

Motor Description

Model: C063BXCJY1304 6K714BH
 Motor ID: 1
 Poles: 4
 Volts: 115/230
 Frequency: 60
 HP: 1/2
 Speed: 1725
 Phase: 1
 Protector: CED2791

Test Conditions

Test Type: Start Run Cap: 0
 Test Number: 40 Start Cap: 357µfd
 Poles: 4 Environment: 21.1 Deg C 12 % RH 1012 hPa
 Volts: 115 Tested: 3/9/2012 12:30:04 PM
 Hz: 60 Tested By: Sharp, Gerald
 Rotation: Gear Ratio: 1:1
 Special Cond: Bearing Friction: -0.64 Oz-Ft
 Speed Conn: Windage Torque: -2.51 Oz-Ft
 TestBoard: Amtps Performance Fixture #3

Special Points	Vline (V)	Vaux (V)	Vcap (V)	Iline (A)	Imain (A)	Iaux (A)	Watts	RPM	Tq (Oz-ft)	HP	Eff (%)	PF (%)	Cap
PUT OZ-FT	115.0	107.3	121.7	40.73	34.75	14.78	4217	7	84.26	0.007	0.1	90.0	322.3
	115.0	107.0	121.4	40.70	34.74	14.74	4211	9	81.36	0.009	0.2	90.0	322.1
	115.0	107.4	121.3	40.70	34.68	14.72	4212	27	83.61	0.027	0.5	90.0	322.0
	115.0	108.9	119.2	40.66	34.36	14.45	4208	159	85.90	0.162	2.9	90.0	321.5
	115.0	110.4	116.6	40.44	33.82	14.13	4195	301	90.59	0.325	5.8	90.2	321.4
	115.0	112.0	113.6	40.13	33.22	13.76	4169	434	96.23	0.497	8.9	90.3	321.4
	115.0	113.6	110.0	39.78	32.68	13.33	4130	554	99.73	0.658	11.9	90.3	321.5
	115.0	116.7	107.1	39.91	32.41	12.96	4138	662	101.48	0.800	14.4	90.2	321.0
	115.0	121.1	106.0	40.15	31.96	12.82	4188	764	105.81	0.962	17.1	90.7	320.9
	115.0	125.0	104.7	40.09	31.31	12.66	4207	857	111.31	1.135	20.1	91.2	320.5
	115.0	128.8	103.4	39.92	30.61	12.49	4210	942	115.20	1.292	22.9	91.7	320.4
	115.0	133.0	102.2	39.70	29.90	12.35	4210	1021	118.77	1.443	25.6	92.2	320.4
	115.0	137.1	101.4	39.48	29.19	12.24	4207	1094	121.36	1.580	28.0	92.6	320.3
	115.0	141.9	100.8	39.22	28.46	12.18	4200	1162	123.11	1.702	30.2	93.1	320.7
	115.0	146.3	100.4	38.85	27.67	12.16	4183	1222	123.68	1.799	32.1	93.6	321.1
	115.0	149.9	100.8	38.29	26.73	12.21	4145	1278	122.29	1.860	33.5	94.1	321.2
	115.0	154.7	102.3	37.83	25.79	12.39	4120	1331	120.51	1.909	34.6	94.7	321.1
	115.0	159.6	104.3	37.42	24.91	12.64	4099	1379	118.28	1.942	35.3	95.2	321.3
	115.0	164.8	106.8	37.04	24.05	12.96	4079	1423	115.10	1.949	35.6	95.8	322.0
	115.0	170.2	109.8	36.65	23.22	13.34	4058	1463	110.89	1.931	35.5	96.3	322.5
	115.0	175.5	113.2	36.26	22.38	13.79	4033	1500	106.08	1.894	35.0	96.7	323.1
	115.0	181.0	117.0	35.89	21.55	14.29	4009	1533	100.70	1.838	34.2	97.1	323.9
	115.0	186.3	121.2	35.46	20.68	14.84	3977	1565	94.27	1.756	32.9	97.5	324.8
	115.0	191.3	125.6	35.03	19.83	15.41	3942	1593	87.34	1.656	31.3	97.9	325.5
	115.0	196.4	130.3	34.56	18.93	16.03	3902	1619	79.39	1.530	29.3	98.2	326.3
	115.0	201.6	135.4	34.08	18.01	16.71	3860	1644	69.83	1.366	26.4	98.5	327.4
	115.0	206.5	140.3	33.61	17.12	17.37	3816	1666	60.62	1.202	23.5	98.7	328.3
	115.0	211.3	145.4	33.07	16.16	18.06	3761	1688	50.20	1.009	20.0	98.9	329.4
	115.0	215.5	150.2	32.50	15.24	18.69	3700	1707	39.41	0.801	16.1	99.0	330.1
	115.0	219.5	155.3	31.81	14.17	19.37	3624	1725	27.50	0.565	11.6	99.1	330.9
	115.0	223.5	159.9	31.06	13.07	20.05	3546	1745	15.02	0.312	6.6	99.3	332.6
	115.0	227.2	164.9	30.20	11.84	20.75	3449	1763	1.04	0.022	0.5	99.3	333.7
	115.0	227.5	165.2	30.11	11.72	20.82	3440	1765	0.00	0.000	0.0	99.3	334.3

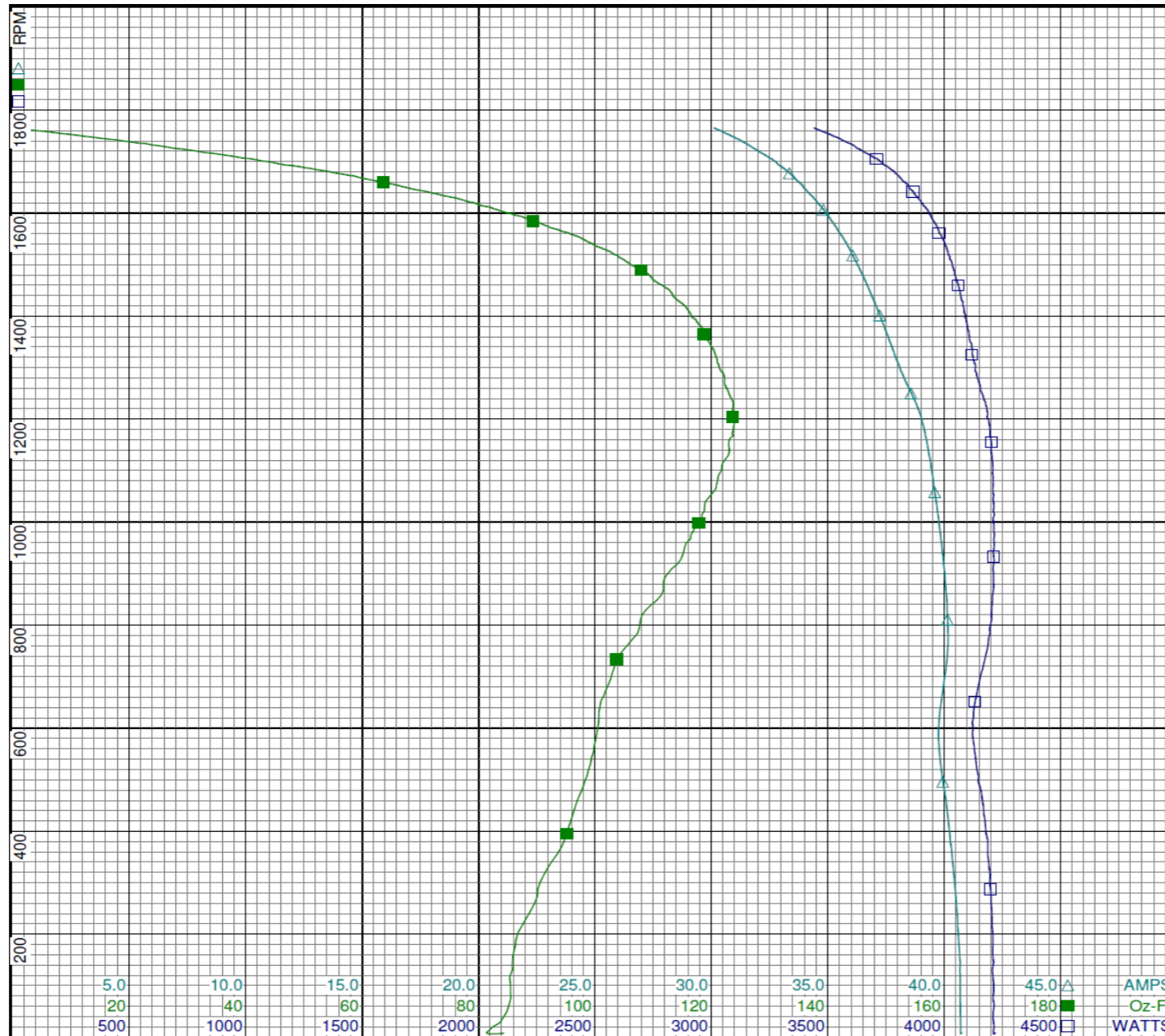
DRAWING NO. PAGE 1 of 8 REV.
6K714BH -

Dayton Electric Mfg. Co. Lake Forest, IL 60045 USA

Performance Data



6K714BH REV. -



Dayton

Curve Descriptions:
Motor(1) Test 40 Start 115V 60 Hz 4P

- SPEED vs WATTS
- SPEED vs TORQUE
- △ SPEED vs ILine

Motor Ratings:
(1) C063CJY1304 6K714BH

DRAWING NO.	PAGE 2 of 8	REV.
	6K714BH	-

Dayton Electric Mfg. Co. Lake Forest, IL 60045 USA

Performance Data



6K714BH REV.
-

Dayton Manufacturing Company

Motor Description

Model: C063BXCJY1304 6K714BH
 Motor ID: 1
 Poles: 4
 Volts: 115/230
 Frequency: 60
 HP: 1/2
 Speed: 1725
 Phase: 1
 Protector: CED2791

Test Conditions

Test Type: Run Run Cap: 0
 Test Number: 42 Start Cap: 357µfd
 Poles: 4 Environment: 21.1 Deg C 12 % RH 1012 hPa
 Volts: 115 Tested: 3/9/2012 12:29:07 PM
 Hz: 60 Tested By: Sharp, Gerald
 Rotation: Gear Ratio: 1:1
 Special Cond: Bearing Friction: -0.72 Oz-Ft
 Speed Conn: Windage Torque: -2.64 Oz-Ft
 TestBoard: Amps Performance Fixture #3

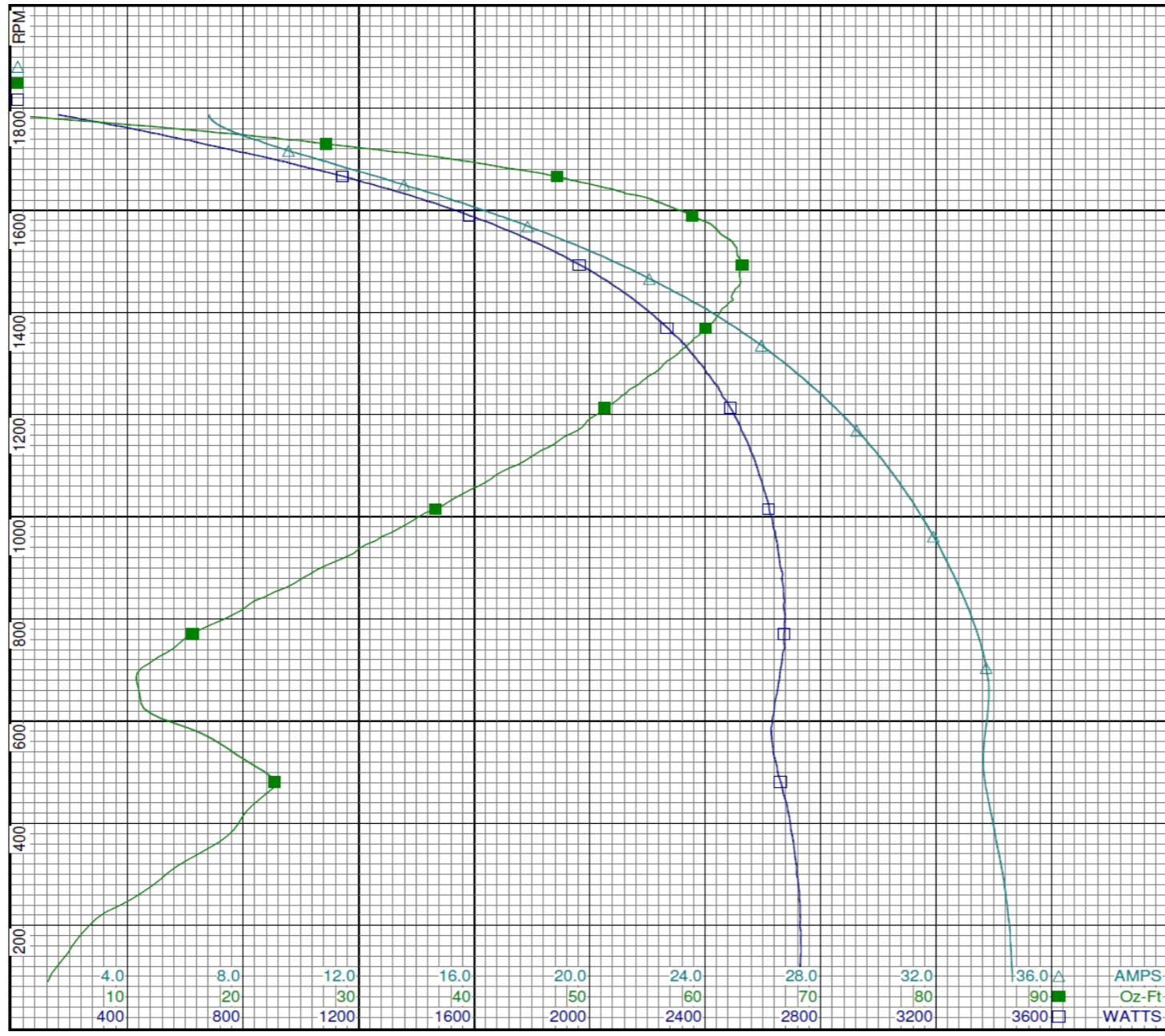
Special Points	Vline (V)	Iline (A)	Watts	RPM	Tq(Oz-ft)	HP	Eff (%)	PF (%)
	115.0	6.82	159	1787	0.00	0.000	0.0	20.2
	115.0	7.12	339	1768	10.03	0.211	46.4	41.4
16.2 OZ-FT	115.0	7.57	450	1755	16.20	0.339	56.1	51.7
0.333 HP	115.0	7.55	446	1756	15.93	0.333	55.8	51.3
18.7 OZ-FT	115.0	7.80	496	1750	18.70	0.390	58.6	55.3
	115.0	7.90	515	1748	19.79	0.412	59.7	56.7
	115.0	8.93	678	1728	27.95	0.575	63.3	66.0
1725 RPM	115.0	9.09	702	1725	29.04	0.596	63.4	67.1
	115.0	10.07	840	1708	35.52	0.722	64.1	72.5
	115.0	11.43	1010	1685	42.16	0.846	62.5	76.8
	115.0	12.88	1175	1662	47.91	0.948	60.2	79.3
	115.0	14.30	1328	1637	52.57	1.024	57.5	80.7
	115.0	15.76	1478	1611	56.53	1.084	54.7	81.6
	115.0	17.28	1626	1580	59.68	1.123	51.5	81.8
	115.0	18.74	1761	1549	61.59	1.136	48.1	81.7
	115.0	20.23	1893	1514	62.76	1.131	44.6	81.4
BDT OZ-FT	115.0	21.22	1977	1489	63.27	1.122	42.3	81.0
	115.0	21.64	2013	1478	62.99	1.108	41.1	80.9
	115.0	23.05	2124	1437	62.38	1.067	37.5	80.1
	115.0	24.42	2224	1393	61.04	1.012	34.0	79.2
	115.0	25.70	2315	1345	58.90	0.943	30.4	78.3
	115.0	26.91	2392	1293	56.23	0.866	27.0	77.3
	115.0	28.08	2459	1236	52.74	0.776	23.5	76.1
	115.0	29.15	2522	1175	49.36	0.691	20.4	75.2
	115.0	30.16	2572	1110	44.43	0.587	17.0	74.2
	115.0	31.07	2611	1038	38.44	0.475	13.6	73.1
	115.0	31.90	2642	961	32.01	0.366	10.3	72.0
	115.0	32.65	2665	879	25.09	0.263	7.3	71.0
	115.0	33.31	2674	789	17.29	0.162	4.5	69.8
	115.0	33.75	2658	694	10.84	0.090	2.5	68.5
	115.0	33.74	2632	595	14.06	0.100	2.8	67.8
	115.0	33.66	2655	491	22.37	0.131	3.7	68.6
	115.0	34.05	2701	375	18.64	0.083	2.3	69.0
	115.0	34.42	2726	251	10.36	0.031	0.8	68.9
	115.0	34.62	2729	118	3.85	0.005	0.1	68.5

DRAWING NO. PAGE 3 of 8 REV.
 6K714BH -

Performance Data



6K714BH REV. -



Dayton[®]

Curve Descriptions:
Motor(1) Test 42 Run 115V 60 Hz 4P

- SPEED vs WATTS
- SPEED vs TORQUE
- △ SPEED vs ILine

Motor Ratings:
(1) C063CJY1304 6K714BH

DRAWING NO.	PAGE 4 of 8	REV.
	6K714BH	-

Dayton Electric Mfg. Co. Lake Forest, IL 60045 USA

Performance Data



6K714BH REV.
-

Dayton Manufacturing Company

Motor Description

Model: C063BXCJY1304 6K714BH
 Motor ID: 1
 Poles: 4
 Volts: 115/230
 Frequency: 60
 HP: 1/2
 Speed: 1725
 Phase: 1
 Protector: CED2791

Test Conditions

Test Type: Start
 Test Number: 6
 Poles: 4
 Volts: 230
 Hz: 60
 Rotation:
 Special Cond:
 Speed Conn:
 TestBoard: Amps Performance Fixture #3
 Run Cap: 0
 Start Cap: 357µfd
 Environment: 21.1 Deg C 15 % RH 1013 hPa
 Tested: 3/9/2012 10:12:51 AM
 Tested By: Sharp, Gerald
 Gear Ratio: 1:1
 Bearing Friction: -0.64 Oz-Ft
 Windage Torque: -2.47 Oz-Ft

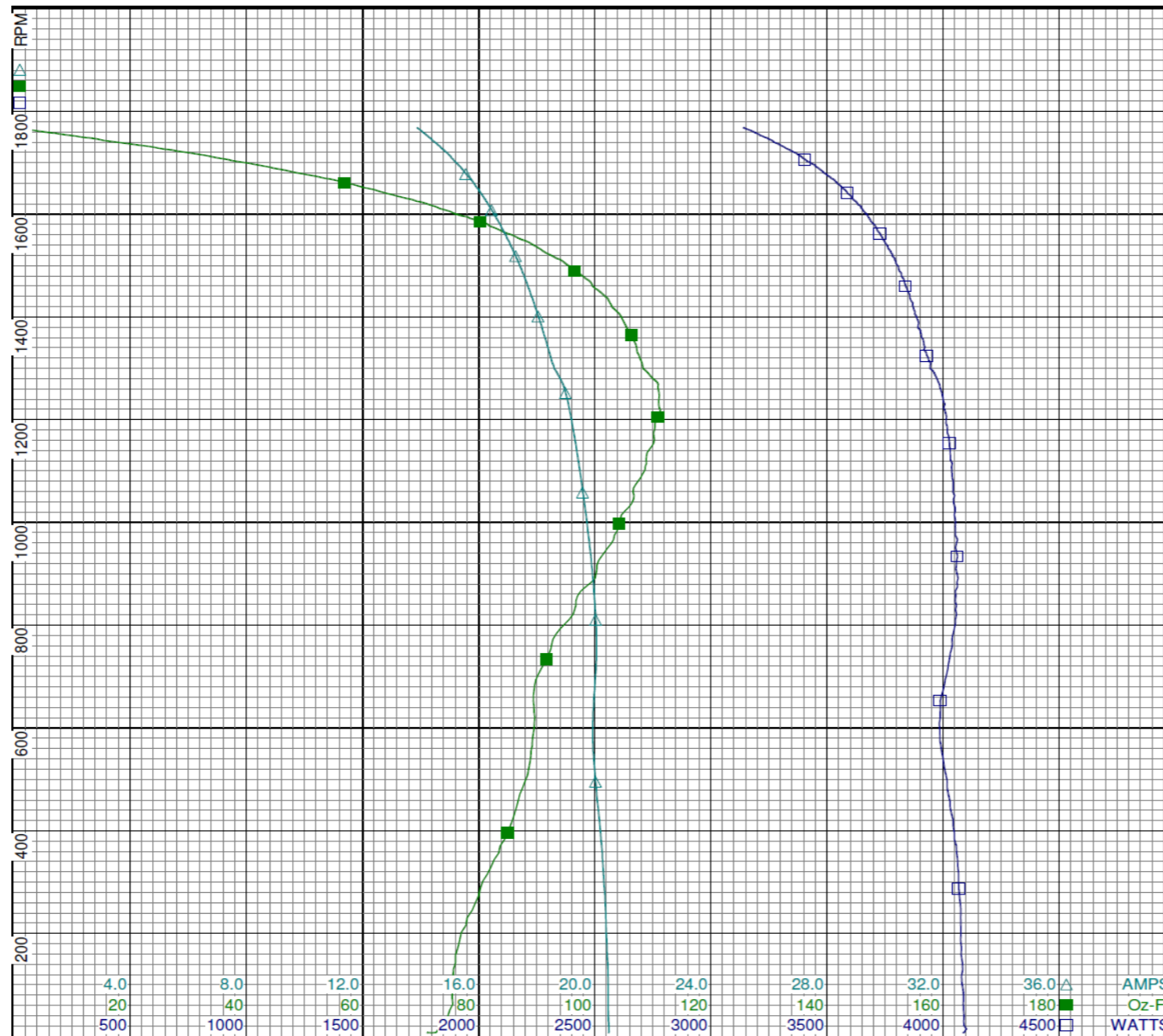
Special Points PUT OZ-FT	Vline (V)	Vaux (V)	Vcap (V)	Iline (A)	Imain (A)	Iaux (A)	Watts	RPM	Tq (Oz-ft)	HP	Eff (%)	PF (%)	Cap
	230.0	199.2	106.0	20.48	16.676	12.860	4088	6	71.15	0.005	0.1	86.8	322.0
	230.0	199.2	106.0	20.48	16.676	12.860	4088	6	71.15	0.005	0.1	86.8	322.0
	230.0	199.7	105.9	20.47	16.577	12.839	4088	29	74.34	0.026	0.5	86.8	321.7
	230.0	202.3	103.7	20.42	16.231	12.571	4077	158	76.01	0.143	2.6	86.8	321.7
	230.0	205.4	101.3	20.31	15.739	12.286	4066	301	80.70	0.289	5.3	87.1	321.7
	230.0	208.3	98.8	20.13	15.234	11.976	4035	433	86.18	0.445	8.2	87.1	321.5
	230.0	211.4	95.7	19.94	14.791	11.586	3993	555	88.99	0.587	11.0	87.1	321.0
	230.0	215.7	93.1	19.97	14.347	11.263	3993	664	89.43	0.707	13.2	86.9	320.8
	230.0	221.0	92.1	20.05	13.698	11.145	4039	763	92.57	0.841	15.5	87.6	320.9
	230.0	225.4	91.3	19.98	12.979	11.042	4055	856	97.02	0.989	18.2	88.2	320.6
	230.0	230.0	90.4	19.84	12.255	10.930	4057	943	101.72	1.141	21.0	88.9	320.7
	230.0	234.6	89.6	19.68	11.521	10.838	4051	1022	105.13	1.279	23.5	89.5	320.8
	230.0	239.3	89.2	19.50	10.797	10.777	4037	1094	108.25	1.410	26.1	90.0	320.5
	230.0	244.0	89.0	19.31	10.072	10.763	4024	1161	110.23	1.524	28.2	90.6	320.7
	230.0	248.7	89.3	19.11	9.350	10.798	4002	1223	111.08	1.618	30.2	91.1	320.7
	230.0	253.4	90.2	18.81	8.538	10.929	3973	1279	110.02	1.675	31.5	91.8	321.3
	230.0	256.1	91.5	18.43	7.812	11.085	3927	1331	107.31	1.700	32.3	92.6	321.3
	230.0	260.4	93.4	18.18	7.078	11.306	3891	1379	105.49	1.731	33.2	93.0	321.2
	230.0	265.4	95.5	17.92	6.366	11.603	3868	1422	102.86	1.742	33.6	93.8	322.4
	230.0	270.3	98.2	17.67	5.692	11.951	3836	1464	99.47	1.733	33.7	94.4	322.8
	230.0	275.0	101.3	17.41	5.082	12.349	3802	1500	95.32	1.703	33.4	95.0	323.3
	230.0	279.4	104.7	17.14	4.547	12.781	3762	1534	90.19	1.647	32.7	95.4	323.8
	230.0	283.8	108.3	16.87	4.107	13.257	3722	1565	84.28	1.570	31.5	95.9	324.6
	230.0	288.0	112.4	16.59	3.795	13.776	3678	1595	77.99	1.481	30.0	96.4	325.1
	230.0	291.9	116.5	16.31	3.670	14.298	3631	1621	70.87	1.367	28.1	96.8	325.7
	230.0	295.9	120.6	16.03	3.708	14.846	3583	1644	62.79	1.229	25.6	97.2	326.7
	230.0	299.6	124.9	15.72	3.916	15.404	3525	1668	54.42	1.081	22.9	97.5	327.2
	230.0	303.0	129.0	15.41	4.260	15.966	3463	1689	44.69	0.898	19.4	97.7	328.3
	230.0	306.1	133.1	15.09	4.668	16.501	3400	1708	35.84	0.729	16.0	97.9	328.9
	230.0	308.9	137.1	14.76	5.133	17.034	3333	1726	26.04	0.535	12.0	98.1	329.5
	230.0	311.9	141.6	14.37	5.768	17.650	3248	1746	14.22	0.296	6.8	98.3	330.6
	230.0	314.2	145.9	13.96	6.426	18.228	3159	1765	2.21	0.047	1.1	98.4	331.4
	230.0	314.8	146.6	13.87	6.562	18.350	3140	1768	0.00	0.000	0.0	98.4	332.0

DRAWING NO. PAGE 5 of 8 REV.
6K714BH -

Performance Data



6K714BH REV.
-



Dayton

Curve Descriptions:
Motor(1) Test 6 Start 230V 60 Hz 4P

- SPEED vs WATTS
- SPEED vs TORQUE
- △ SPEED vs ILine

Motor Ratings:
(1) C063CJY1304 6K714BH

DRAWING NO.	PAGE 6 of 8	REV.
6K714BH		-

Dayton Electric Mfg. Co. Lake Forest, IL 60045 USA

Performance Data



6K714BH	REV. -
----------------	-----------

Dayton Manufacturing Company

Motor Description

Model: C063BXCJY1304 6K714BH
Motor ID: 1
Poles: 4
Volts: 115/230
Frequency: 60
HP: 1/2
Speed: 1725
Phase: 1
Protector: CED2791

Test Conditions

Test Type: Run
Test Number: 7
Poles: 4
Volts: 230
Hz: 60
Rotation:
Special Cond:
Speed Conn:
TestBoard: Amps Performance Fixture #3
Run Cap: 0
Start Cap: 357µfd
Environment: 21.1 Deg C 15 % RH 1013 hPa
Tested: 3/9/2012 9:48:36 AM
Tested By: Sharp, Gerald
Gear Ratio: 1:1
Bearing Friction: -0.77 Oz-Ft
Windage Torque: -2.70 Oz-Ft

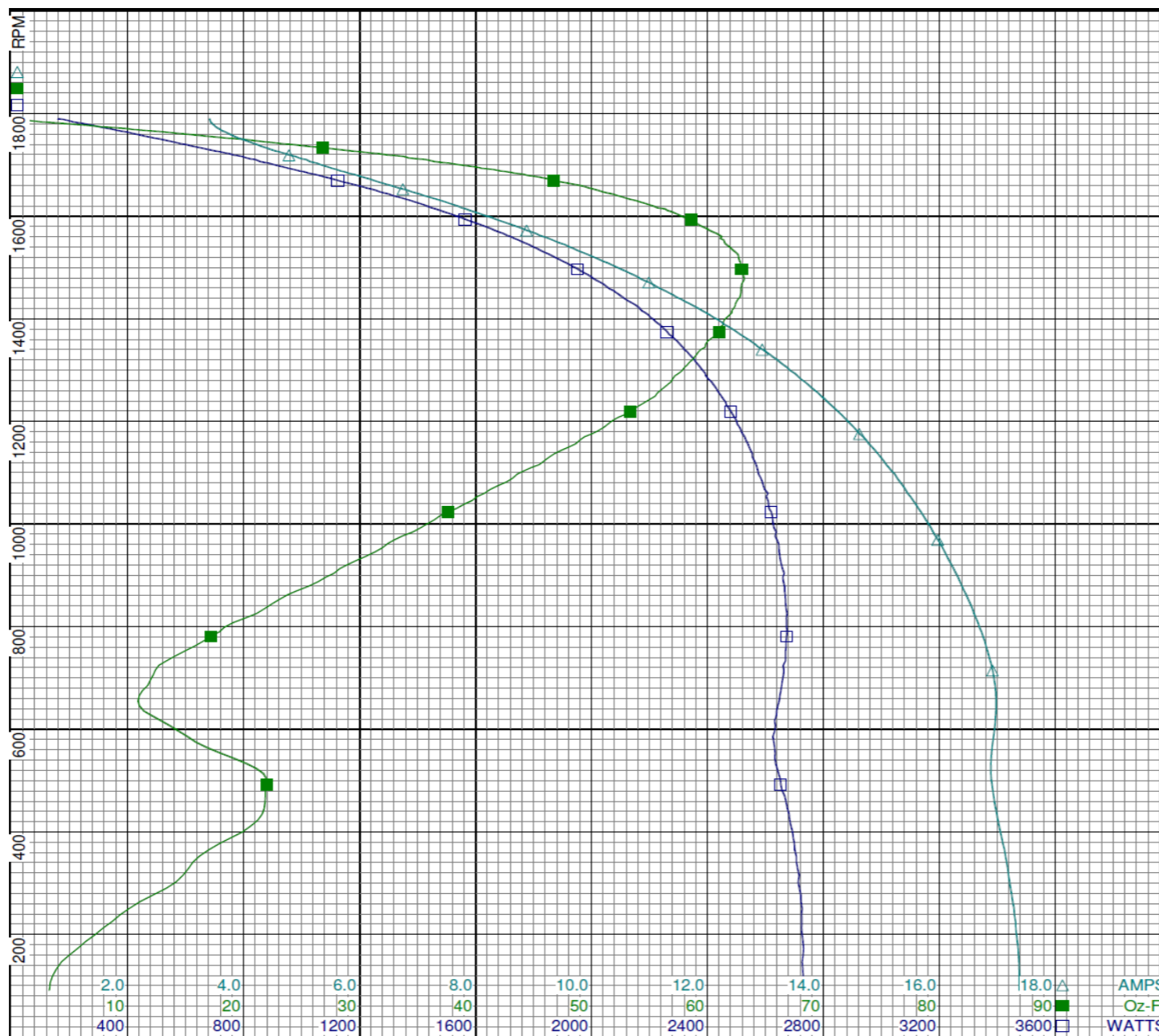
Special Points	Vline (V)	Iline (A)	Watts	RPM	Tq (Oz-ft)	HP	Eff (%)	PF (%)
	230.0	3.410	159	1790	0.00	0.000	0.0	20.2
	230.0	3.564	332	1770	9.78	0.206	46.3	40.5
16.2 OZ-FT	230.0	3.803	449	1757	16.20	0.339	56.3	51.3
0.333 HP	230.0	3.791	444	1758	15.91	0.333	56.0	50.9
18.7 OZ-FT	230.0	3.919	495	1752	18.70	0.390	58.8	54.9
	230.0	3.959	508	1751	19.49	0.406	59.7	55.8
	230.0	4.435	668	1731	27.70	0.571	63.8	65.4
1725 RPM	230.0	4.611	719	1725	30.09	0.618	64.1	67.8
	230.0	5.018	825	1711	35.15	0.716	64.7	71.5
	230.0	5.669	992	1688	42.13	0.847	63.7	76.1
	230.0	6.379	1157	1665	47.83	0.948	61.1	78.8
	230.0	7.110	1315	1640	52.24	1.020	57.8	80.4
	230.0	7.830	1462	1614	56.35	1.083	55.2	81.2
	230.0	8.582	1609	1585	59.14	1.116	51.7	81.5
	230.0	9.325	1747	1553	61.40	1.135	48.5	81.4
	230.0	10.050	1874	1519	62.68	1.134	45.1	81.1
	230.0	10.780	1997	1482	63.12	1.114	41.6	80.5
BDT OZ-FT	230.0	10.848	2008	1477	63.16	1.111	41.3	80.5
	230.0	11.468	2107	1442	62.78	1.077	38.1	79.9
	230.0	12.172	2214	1398	61.48	1.023	34.5	79.1
	230.0	12.817	2304	1350	59.83	0.962	31.1	78.2
	230.0	13.433	2384	1298	57.79	0.893	28.0	77.2
	230.0	14.020	2454	1243	55.04	0.815	24.8	76.1
	230.0	14.572	2516	1182	50.61	0.712	21.1	75.1
	230.0	15.081	2567	1116	45.48	0.604	17.6	74.0
	230.0	15.545	2608	1045	39.68	0.494	14.1	73.0
	230.0	15.973	2639	969	33.00	0.381	10.8	71.8
	230.0	16.353	2661	887	26.39	0.279	7.8	70.8
	230.0	16.690	2672	798	18.32	0.174	4.9	69.6
	230.0	16.932	2661	705	12.19	0.102	2.9	68.3
	230.0	16.955	2634	606	13.65	0.099	2.8	67.5
	230.0	16.892	2651	502	21.98	0.131	3.7	68.2
	230.0	17.072	2695	388	18.91	0.087	2.4	68.6
	230.0	17.260	2722	264	11.08	0.035	1.0	68.6
	230.0	17.373	2728	132	3.85	0.006	0.2	68.3

DRAWING NO.	PAGE 7 of 8	REV.
	6K714BH	-

Performance Data



6K714BH REV. -



Curve Descriptions:
Motor(1) Test 7 Run 230V 60 Hz 4P

- SPEED vs WATTS
- SPEED vs TORQUE
- △ SPEED vs ILine

Motor Ratings:
(1) C063CJY1304 6K714BH

AMPS
Oz-Ft
WATTS

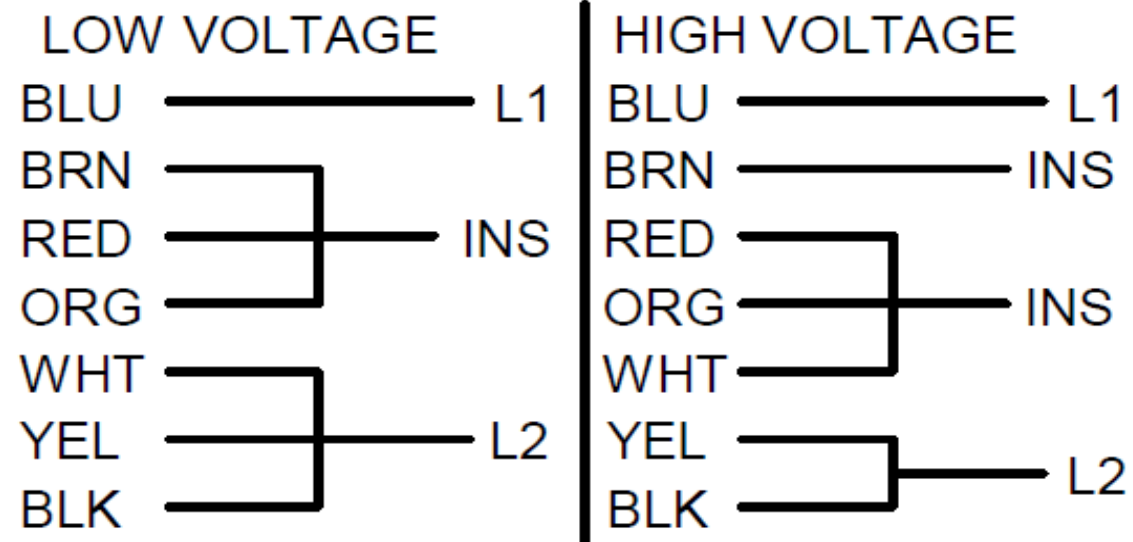
DRAWING NO.	PAGE 8 of 8	REV.
6K714BH		-

Dayton Electric Mfg. Co. Lake Forest, IL 60045 USA

6K714BH

REV.
-

CONNECTIONS



ROTATION CCW LE
TO REVERSE ROTATION
INTERCHANGE RED & BLK LEADS

DRAWING NO.	PAGE 1 of 1	REV.
6K714BH		-

Dayton[®]**FARM DUTY MOTOR**

HP: 1/2

VOLTS: 115/230

AMPS: 9.0/4.5

RPM: 1725

DUTY: CONT

SF: 1.15

KVA CODE: L

ENCL: TEFC

THERMALLY PROTECTED: MANUAL

MFG. NO. PROT. CODE: 01110

MTR REF: C63BXCJY-1304

PH: 1

HZ: 60

FR: 56

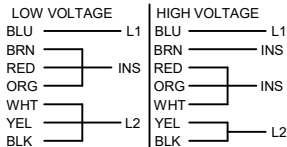
INS CL: F

AMB: 40 °C

SFA: 9.2/4.6

AVG. F.L.
EFF.BAR CODE

Part No 6K714BH

**Disconnect Power Before Making Any
Electrical Connections or Changes****CONNECTIONS**

ROTATION CCW LE
TO REVERSE ROTATION
INTERCHANGE RED & BLK LEADS



Mfd for Dayton Electric Mfg. Co., Lake Forest, IL 60045 USA

Made in Mexico