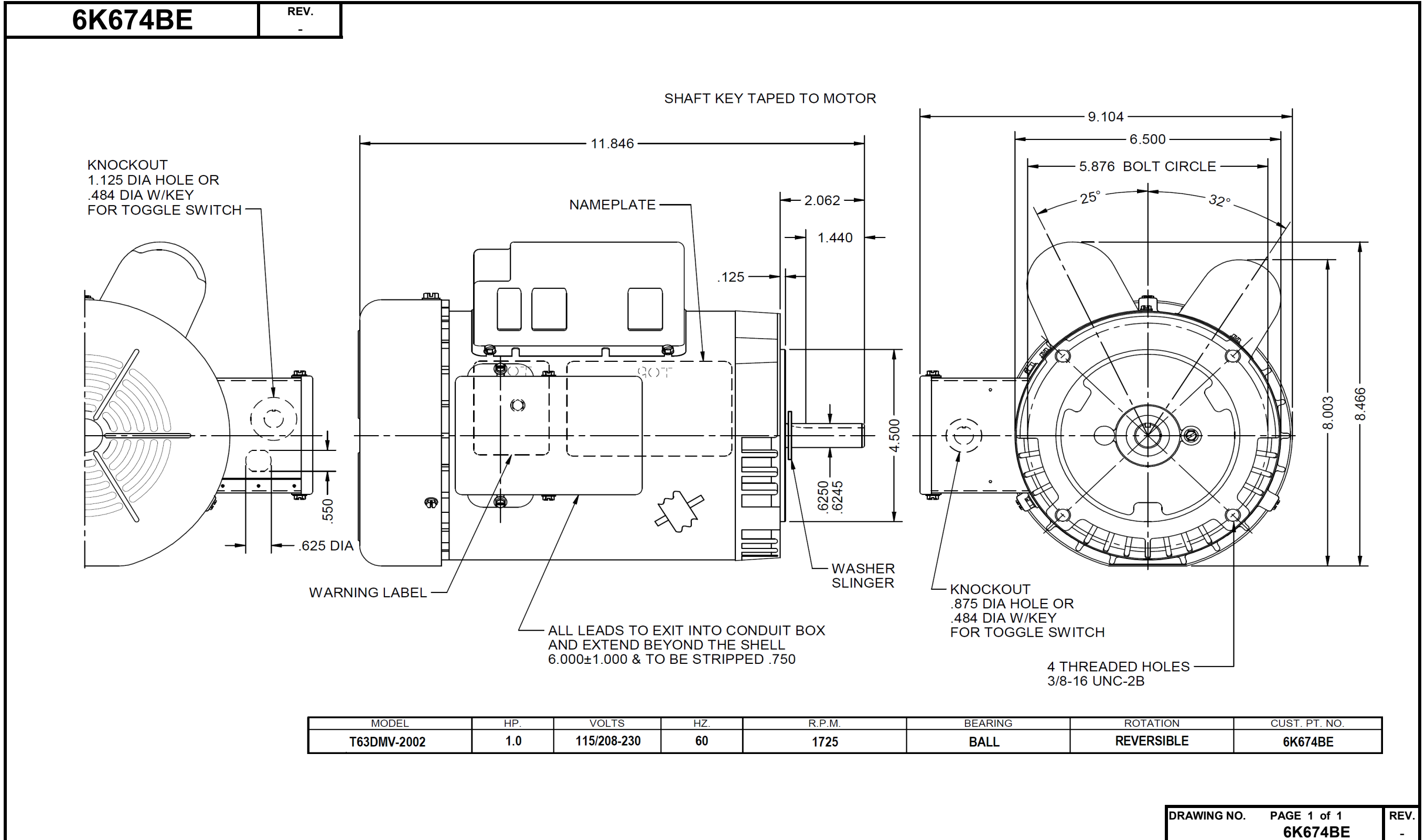


Dimensional Drawing



Dayton Electric Mfg. Co. Lake Forest, IL 60045 USA

Performance Data



6K674BE

REV.
-

MOTOR PERFORMANCE

HP:	1							
Poles:	4P							
No. of Speeds:	1spd							
Volts:	115/208-230	230						
HZ:	60	60						
Service Factor:	1.15							
Efficiency:	@ Rated Load							
Power Factor:	@ Rated Load							
Amps:	@ No Load							
	@ Rated Load	5						
	@ Service Factor	5.6						
	@ Locked Rotor	35.1						
RPM:	@ Rated Load							
Ambient (°C):								
Altitude (FASL):								
Torques:	Breakdown	143.6						
	Locked Rotor	132.1						
	Pull-Up	130.2						
	Rated Load							
	Service Factor							
Watts:	Rated Load							
KVA Code:								
Temperature Rise:	@ Rated Load	51.6°C						
	@ Service Factor	58.4°C						
Thermal Protector:	Trip Temp (°C)							
Winding Material:	Start (Auxiliary)							
	Run (Main)							
Capacitor(s):	Start (MFD / Volts)	233-280 MFD / 125 VAC						
	No. of Start Capacitors							
	Run (MFD / Volts)	30 MFD / 370 VAC						
	No. of Run Capacitors							

PERFORMANCE DATA:

HP:								
Poles:								
Volts:								
HZ:								
Efficiency:	@ Rated Load							
Power Factor:	@ Rated Load							
Amps:	@ No Load							
	@ Rated Load							
	@ Service Factor							
	@ Locked Rotor							
Torques:	@ Rated Load							
	Locked Rotor							
	Pull-Up							
	Rated Load							
	Service Factor							
Watts:	@ Rated Load							
Temperature Rise:	@ Rated Load							
	@ Service Factor							

DRAWING NO. PAGE 1 REV.
6K674BE -

Performance Data



6K674BE	REV. -
----------------	-----------

Dayton Manufacturing Company

Motor Description

Model: T063DMV2002
 Motor ID: 1
 Poles: 4
 Volts: 115/208-230
 Frequency: 60
 HP: 1
 Speed: 1725
 Phase: 1
 Protector: NONE

Test Conditions

Test Type: Start
 Test Number: 1
 Poles: 4
 Volts: 115
 Hz: 60
 Rotation:
 Special Cond: 2-line
 Speed Conn:
 TestBoard: Amtps Performance Fixture #1
 Run Cap: 0
 Start Cap: 0µfd
 Tested: 9/18/2012 1:54:29 PM
 Tested By: Sharp, Gerald
 Gear Ratio: 1:1
 Bearing Friction: -0.16 Oz-Ft
 Windage Torque: -2.56 Oz-Ft

Special Points	Vline (V)	Iline (A)	Watts	RPM	Tq (Oz-ft)	HP	Eff (%)	PF (%)
PUT OZ-FT	115.0	68.45	6835	7	146.85	0.013	0.1	86.8
	115.0	68.39	6826	19	145.71	0.032	0.4	86.8
	115.0	68.37	6825	53	147.29	0.093	1.0	86.8
	115.0	67.98	6803	210	149.68	0.374	4.1	87.0
	115.0	67.43	6770	356	161.79	0.685	7.5	87.3
	115.0	66.52	6684	488	166.96	0.970	10.8	87.4
	115.0	66.12	6610	610	165.56	1.203	13.6	86.9
	115.0	66.84	6721	722	164.38	1.413	15.7	87.4
	115.0	66.80	6817	827	173.02	1.704	18.7	88.7
	115.0	66.30	6841	923	180.38	1.981	21.6	89.7
	115.0	65.69	6846	1010	181.89	2.187	23.8	90.6
	115.0	65.09	6844	1091	185.26	2.406	26.2	91.4
	115.0	64.49	6832	1165	185.48	2.572	28.1	92.1
	115.0	63.92	6825	1232	182.37	2.675	29.2	92.8
	115.0	63.34	6815	1294	177.27	2.731	29.9	93.6
	115.0	62.73	6795	1349	171.30	2.752	30.2	94.2
	115.0	62.13	6776	1401	161.90	2.699	29.7	94.8
	115.0	61.71	6768	1447	151.41	2.608	28.7	95.4
	115.0	60.78	6706	1488	137.80	2.442	27.2	95.9
	115.0	48.33	5093	1526	115.87	2.105	30.8	91.6
	115.0	27.82	2916	1566	129.08	2.406	61.6	91.1
	115.0	26.28	2733	1596	122.14	2.321	63.4	90.4
	115.0	23.70	2470	1626	114.30	2.213	66.8	90.6
	115.0	20.99	2197	1652	104.58	2.057	69.8	91.0
	115.0	18.48	1932	1678	94.80	1.893	73.1	90.9
	115.0	16.03	1663	1700	82.23	1.664	74.7	90.2
	115.0	13.57	1389	1723	69.94	1.434	77.1	89.0
	115.0	11.31	1127	1743	56.08	1.163	77.0	86.6
	115.0	8.76	806	1765	38.02	0.799	73.9	80.0
	115.0	6.75	523	1784	21.32	0.453	64.5	67.5
	115.0	5.64	296	1801	7.05	0.151	38.1	45.6

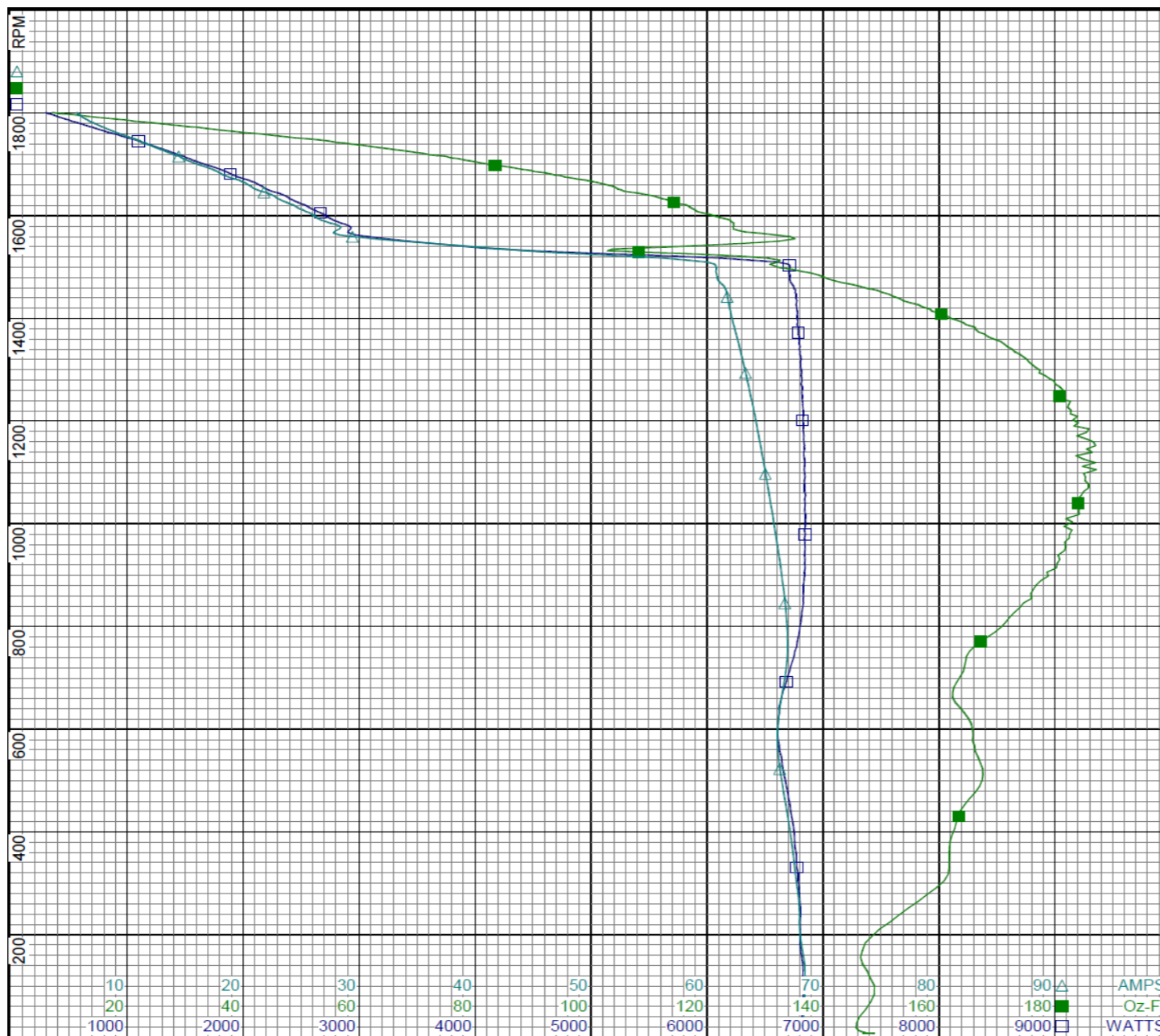
DRAWING NO.	PAGE 1 of 8	REV.
6K674BE		-

Dayton Electric Mfg. Co. Lake Forest, IL 60045 USA

Performance Data



6K674BE REV. -



Dayton

Curve Descriptions:
 Motor(1) Test 1 Start 115V 60 Hz 4P
 2-line Attempt #1

- SPEED vs WATTS
- SPEED vs TORQUE
- △ SPEED vs ILine

Motor Ratings:
 (1) T063DMV2002 ID: 1

DRAWING NO. PAGE 2 of 8 REV.
6K674BE -

Dayton Electric Mfg. Co. Lake Forest, IL 60045 USA

Performance Data



6K674BE	REV. -
----------------	------------------

Dayton Manufacturing Company

Motor Description

Model: T063DMV2002
 Motor ID: 1
 Poles: 4
 Volts: 115/208-230
 Frequency: 60
 HP: 1
 Speed: 1725
 Phase: 1
 Protector: NONE

Test Conditions

Test Type: Run
 Test Number: 3
 Poles: 4
 Volts: 115
 Hz: 60
 Rotation:
 Special Cond: 3 line
 Speed Conn:
 TestBoard: Amtps Performance Fixture #1
 Run Cap: 0
 Start Cap: 0µfd
 Tested: 9/18/2012 2:04:57 PM
 Tested By: Sharp, Gerald
 Gear Ratio: 1:1
 Bearing Friction: -0.16 Oz-Ft
 Windage Torque: -2.24 Oz-Ft

Special Points	Vline (V)	Vaux (V)	Vcap (V)	Iline (A)	Imain (A)	Iaux (A)	Watts	RPM	Tq (Oz-ft)	HP	Eff (%)	PF (%)	Cap
	115.0	222.5	255.8	5.37	6.72	2.907	167	1797	0.00	0.000	0.0	26.9	30.1
	115.0	219.3	250.0	5.88	6.40	2.832	364	1778	12.59	0.267	54.5	53.9	30.0
	115.0	211.8	237.5	8.85	7.97	2.691	834	1760	40.72	0.853	76.3	82.0	30.1
1 HP	115.0	209.3	234.0	9.80	8.75	2.655	957	1753	47.93	1.000	78.0	84.9	30.1
48.8 OZ-FT	115.0	208.9	233.6	9.92	8.86	2.650	971	1752	48.80	1.018	78.2	85.1	30.1
1.15 HP	115.0	206.0	230.0	10.96	9.80	2.611	1091	1744	55.40	1.150	78.6	86.6	30.1
56.1 OZ-FT	115.0	205.8	229.7	11.07	9.90	2.607	1105	1743	56.10	1.164	78.6	86.8	30.1
	115.0	205.5	229.2	11.23	10.04	2.602	1125	1741	57.11	1.184	78.5	87.0	30.1
1725 RPM	115.0	200.5	222.7	13.15	11.84	2.538	1348	1725	69.04	1.418	78.4	89.2	30.2
	115.0	199.0	221.0	13.64	12.32	2.518	1405	1721	71.83	1.471	78.1	89.5	30.2
	115.0	192.3	212.7	16.28	14.91	2.431	1696	1700	85.58	1.732	76.2	90.6	30.3
	115.0	185.7	204.7	18.78	17.41	2.348	1972	1678	97.92	1.956	74.0	91.3	30.4
	115.0	178.9	196.7	21.33	20.01	2.265	2242	1653	109.02	2.146	71.4	91.4	30.5
	115.0	171.6	188.4	24.03	22.74	2.179	2514	1628	118.11	2.289	67.9	91.0	30.7
	115.0	163.9	180.2	26.69	25.45	2.095	2778	1600	126.40	2.407	64.6	90.5	30.8
	115.0	156.2	172.2	29.39	28.22	2.008	3038	1569	133.00	2.484	61.0	89.9	30.9
	115.0	148.5	164.1	32.04	30.97	1.922	3293	1536	137.42	2.512	56.9	89.4	31.1
	115.0	140.5	156.4	34.72	33.75	1.836	3539	1499	140.52	2.508	52.9	88.6	31.1
	115.0	132.5	148.8	37.35	36.47	1.754	3774	1460	142.33	2.475	48.9	87.9	31.3
BDT OZ-FT	115.0	130.7	147.2	37.87	37.01	1.737	3818	1452	142.66	2.465	48.2	87.7	31.3
	115.0	124.4	141.7	39.92	39.14	1.674	3992	1417	142.03	2.396	44.8	87.0	31.3
	115.0	116.3	135.1	42.44	41.76	1.598	4200	1371	139.87	2.283	40.6	86.1	31.4
	115.0	108.3	129.0	44.87	44.29	1.528	4395	1320	136.08	2.139	36.3	85.2	31.4
	115.0	100.2	123.5	47.14	46.72	1.463	4560	1265	130.61	1.967	32.2	84.1	31.4
	115.0	92.4	118.6	49.39	49.06	1.399	4720	1207	123.23	1.770	28.0	83.1	31.3
	115.0	84.6	114.6	51.50	51.27	1.349	4862	1142	114.97	1.564	24.0	82.1	31.2
	115.0	77.1	111.4	53.48	53.34	1.313	4991	1074	104.88	1.341	20.0	81.2	31.2
	115.0	69.9	108.5	55.31	55.25	1.281	5103	998	93.19	1.107	16.2	80.2	31.3
	115.0	62.5	106.5	57.02	57.06	1.252	5192	919	79.70	0.871	12.5	79.2	31.2
	115.0	55.4	104.5	58.58	58.71	1.227	5265	832	64.98	0.644	9.1	78.2	31.1
	115.0	48.0	102.5	59.88	60.11	1.199	5301	739	47.40	0.417	5.9	77.0	31.0
	115.0	38.8	101.5	60.49	60.80	1.175	5272	642	39.19	0.299	4.2	75.8	30.7
	115.0	29.3	106.3	60.18	60.61	1.219	5257	540	50.99	0.328	4.7	76.0	30.4
	115.0	25.3	112.8	60.58	61.07	1.291	5341	430	53.39	0.274	3.8	76.7	30.4
	115.0	22.0	115.3	61.41	61.95	1.311	5418	309	39.95	0.147	2.0	76.7	30.2
	115.0	17.6	118.4	61.91	62.52	1.346	5450	180	20.91	0.045	0.6	76.5	30.2
	115.0	15.6	122.6	62.18	62.88	1.405	5467	46	16.84	0.009	0.1	76.5	30.4

DRAWING NO.	PAGE 3 of 8	REV.
6K674BE		-

Performance Data



6K674BE REV. -



Curve Descriptions:
 Motor(1) Test 3 Run 115V 60 Hz 4P
 3 line Attempt #1
 □ SPEED vs WATTS
 ■ SPEED vs TORQUE
 △ SPEED vs ILine

Motor Ratings:
 (1) T063DMV2002 ID: 1

DRAWING NO. PAGE 4 of 8 REV.
6K674BE -

Dayton Electric Mfg. Co. Lake Forest, IL 60045 USA

Performance Data



6K674BE REV.
-

Dayton Manufacturing Company

Motor Description

Model: T063DMV2002
 Motor ID: 1
 Poles: 4
 Volts: 115/208-230
 Frequency: 60
 HP: 1
 Speed: 1725
 Phase: 1
 Protector: NONE

Test Conditions

Test Type: Start Run Cap: 0
 Test Number: 6 Start Cap: 0µfd
 Poles: 4
 Volts: 230 Tested: 9/18/2012 12:37:45 PM
 Hz: 60 Tested By: Sharp, Gerald
 Rotation:
 Special Cond: 2 line Gear Ratio: 1:1
 Speed Conn: Bearing Friction: -0.16 Oz-Ft
 TestBoard: Windage Torque: -2.08 Oz-Ft
 Amtps Performance Fixture #1

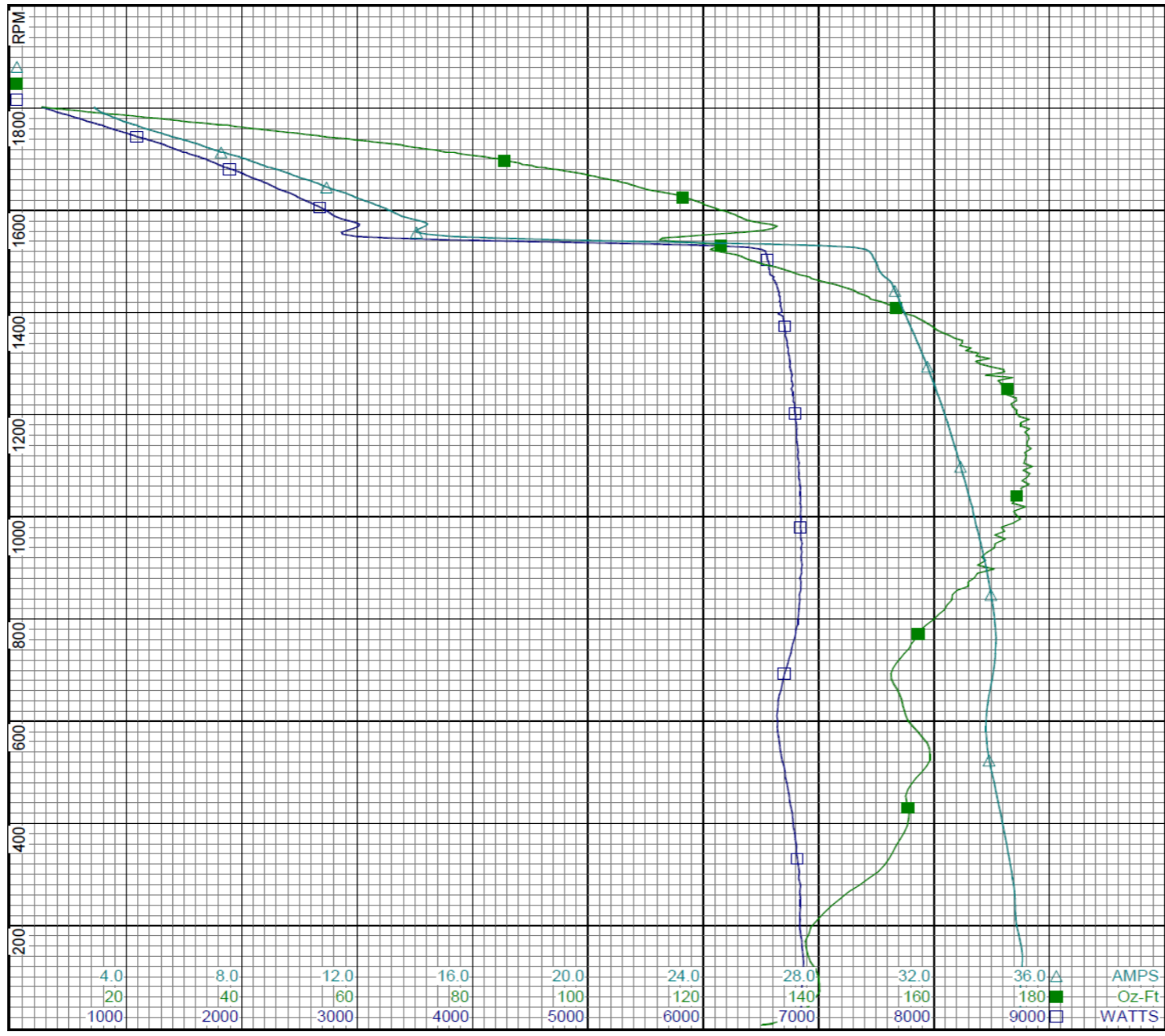
Special Points	Vline (V)	Iline (A)	Watts	RPM	Tq (Oz-ft)	HP	Eff (%)	PF (%)
	230.0	35.08	6857	7	132.08	0.010	0.1	85.0
PUT OZ-FT	230.0	35.06	6846	6	130.22	0.009	0.1	84.9
	230.0	34.99	6856	54	139.15	0.089	1.0	85.2
	230.0	34.84	6839	211	139.80	0.351	3.8	85.3
	230.0	34.53	6807	356	153.42	0.650	7.1	85.7
	230.0	34.05	6712	489	156.93	0.914	10.2	85.7
	230.0	33.82	6637	611	155.11	1.128	12.7	85.3
	230.0	34.12	6744	723	154.16	1.326	14.7	85.9
	230.0	34.04	6831	828	162.29	1.599	17.5	87.3
	230.0	33.71	6847	922	168.28	1.847	20.1	88.3
	230.0	33.35	6845	1011	173.82	2.092	22.8	89.2
	230.0	32.96	6827	1091	175.46	2.279	24.9	90.1
	230.0	32.57	6808	1166	175.76	2.439	26.7	90.9
	230.0	32.18	6783	1232	174.23	2.556	28.1	91.6
	230.0	31.78	6749	1294	169.70	2.614	28.9	92.3
	230.0	31.36	6718	1350	163.53	2.628	29.2	93.1
	230.0	30.96	6681	1401	154.78	2.582	28.8	93.8
	230.0	30.62	6645	1447	145.24	2.501	28.1	94.4
	230.0	30.05	6566	1489	132.52	2.349	26.7	95.0
	230.0	29.21	6388	1528	122.08	2.220	25.9	95.1
	230.0	14.19	2971	1565	132.19	2.463	61.8	91.0
	230.0	13.21	2745	1597	124.03	2.359	64.1	90.3
	230.0	11.92	2483	1626	116.46	2.254	67.7	90.6
	230.0	10.63	2215	1653	106.78	2.101	70.8	90.6
	230.0	9.36	1945	1677	95.80	1.913	73.4	90.4
	230.0	8.14	1684	1701	84.91	1.719	76.1	90.0
	230.0	6.86	1398	1722	70.86	1.453	77.5	88.6
	230.0	5.67	1115	1743	55.09	1.143	76.5	85.5
	230.0	4.43	811	1764	38.76	0.814	74.8	79.6
	230.0	3.47	530	1784	22.00	0.467	65.8	66.4
	230.0	2.87	268	1802	5.28	0.113	31.6	40.5

DRAWING NO. PAGE 5 of 8 REV.
6K674BE -

Performance Data



6K674BE REV. -



Curve Descriptions:
 Motor(1) Test 6 Start 230V 60 Hz 4P
 2 line Attempt #1
 □ SPEED vs WATTS
 ■ SPEED vs TORQUE
 △ SPEED vs ILine

Motor Ratings:
 (1) T063DMV2002 ID: 1

DRAWING NO. PAGE 6 of 8 REV.
6K674BE -

Dayton Electric Mfg. Co. Lake Forest, IL 60045 USA

Performance Data



6K674BE	REV. -
----------------	------------------

Dayton Manufacturing Company

Motor Description

Model: T063DMV2002
 Motor ID: 1
 Poles: 4
 Volts: 115/208-230
 Frequency: 60
 HP: 1
 Speed: 1725
 Phase: 1
 Protector: NONE

Test Conditions

Test Type: Run
 Test Number: 8
 Poles: 4
 Volts: 230
 Hz: 60
 Rotation:
 Special Cond: 3 line
 Speed Conn:
 TestBoard: Aamps Performance Fixture #1
 Run Cap: 0
 Start Cap: 0µfd
 Tested: 9/18/2012 8:03:12 AM
 Tested By: Sharp, Gerald
 Gear Ratio: 1:1
 Bearing Friction: -0.32 Oz-Ft
 Windage Torque: -2.24 Oz-Ft

Special Points	Vline (V)	Vaux (V)	Vcap (V)	Iline (A)	Imain (A)	Iaux (A)	Watts	RPM	Tq (Oz-ft)	HP	Eff (%)	PF (%)	Cap
	230.0	247.1	256.4	2.69	4.47	2.916	151	1803	0.00	0.000	0.0	24.3	30.2
	230.0	246.5	248.2	3.13	3.83	2.805	444	1785	17.40	0.370	62.1	61.8	30.0
	230.0	245.6	239.0	4.33	3.94	2.710	804	1765	38.98	0.819	76.0	80.7	30.1
1 HP	230.0	243.9	234.4	4.94	4.26	2.663	956	1753	47.92	1.000	78.0	84.2	30.1
48.8 OZ-FT	230.0	243.7	234.0	5.00	4.30	2.659	973	1752	48.80	1.018	78.0	84.5	30.1
	230.0	242.4	230.9	5.47	4.62	2.632	1082	1746	54.59	1.134	78.2	86.1	30.2
1.15 HP	230.0	242.2	230.5	5.53	4.67	2.629	1098	1744	55.39	1.150	78.2	86.3	30.3
56.1 OZ-FT	230.0	242.1	230.1	5.59	4.71	2.626	1112	1743	56.10	1.164	78.1	86.4	30.3
1725 RPM	230.0	239.8	223.1	6.62	5.53	2.551	1358	1725	69.21	1.421	78.1	89.1	30.3
	230.0	239.8	223.0	6.63	5.53	2.550	1359	1725	69.28	1.423	78.1	89.1	30.3
	230.0	236.3	214.7	7.90	6.69	2.465	1639	1705	83.26	1.690	76.9	90.2	30.5
	230.0	233.4	207.0	9.11	7.85	2.378	1907	1682	95.11	1.905	74.5	91.0	30.5
	230.0	229.8	198.8	10.45	9.20	2.290	2193	1659	106.60	2.105	71.6	91.2	30.6
	230.0	225.9	190.6	11.83	10.60	2.207	2477	1633	117.51	2.284	68.8	91.0	30.7
	230.0	221.6	182.4	13.20	12.03	2.123	2750	1606	125.61	2.401	65.1	90.6	30.9
	230.0	217.2	174.6	14.52	13.43	2.039	3005	1576	131.95	2.476	61.5	90.0	31.0
	230.0	212.3	166.5	15.90	14.89	1.952	3267	1542	137.88	2.531	57.8	89.4	31.1
	230.0	207.5	158.7	17.24	16.32	1.868	3516	1508	141.81	2.545	54.0	88.7	31.2
	230.0	202.7	151.3	18.57	17.74	1.785	3752	1468	143.49	2.508	49.9	87.9	31.3
BDT OZ-FT	230.0	198.7	145.5	19.61	18.87	1.720	3935	1436	143.64	2.455	46.5	87.2	31.4
	230.0	197.5	144.0	19.86	19.13	1.703	3975	1427	143.20	2.432	45.6	87.0	31.4
	230.0	192.5	137.3	21.14	20.51	1.628	4190	1382	141.53	2.328	41.4	86.2	31.4
	230.0	187.0	130.8	22.38	21.85	1.554	4383	1331	138.16	2.190	37.3	85.1	31.5
	230.0	181.8	125.2	23.56	23.14	1.487	4550	1277	132.79	2.019	33.1	84.0	31.5
	230.0	176.4	120.0	24.69	24.38	1.424	4710	1219	126.13	1.831	29.0	82.9	31.5
	230.0	171.1	115.6	25.78	25.56	1.370	4856	1156	117.59	1.618	24.9	81.9	31.4
	230.0	166.0	111.9	26.78	26.66	1.323	4981	1087	107.56	1.392	20.8	80.9	31.4
	230.0	161.0	108.8	27.72	27.69	1.288	5098	1014	96.22	1.161	17.0	80.0	31.4
	230.0	156.5	106.2	28.60	28.66	1.257	5195	935	83.26	0.927	13.3	79.0	31.4
	230.0	152.0	104.0	29.41	29.57	1.229	5271	850	68.09	0.689	9.7	77.9	31.4
	230.0	147.8	101.5	30.11	30.34	1.186	5309	758	51.44	0.464	6.5	76.7	31.0
	230.0	143.0	99.7	30.51	30.85	1.162	5294	661	39.41	0.310	4.4	75.5	30.9
	230.0	134.9	102.7	30.41	30.86	1.186	5262	561	48.01	0.320	4.5	75.2	30.6
	230.0	126.6	109.6	30.50	31.02	1.251	5332	453	55.36	0.299	4.2	76.0	30.3
	230.0	122.5	112.6	30.90	31.47	1.281	5416	334	42.39	0.168	2.3	76.2	30.2
	230.0	118.3	115.0	31.23	31.86	1.305	5467	206	24.87	0.061	0.8	76.1	30.1
	230.0	112.7	118.8	31.35	32.06	1.354	5476	72	16.76	0.014	0.2	75.9	30.2

DRAWING NO.	PAGE 7 of 8	REV.
	6K674BE	-

Dayton Electric Mfg. Co. Lake Forest, IL 60045 USA

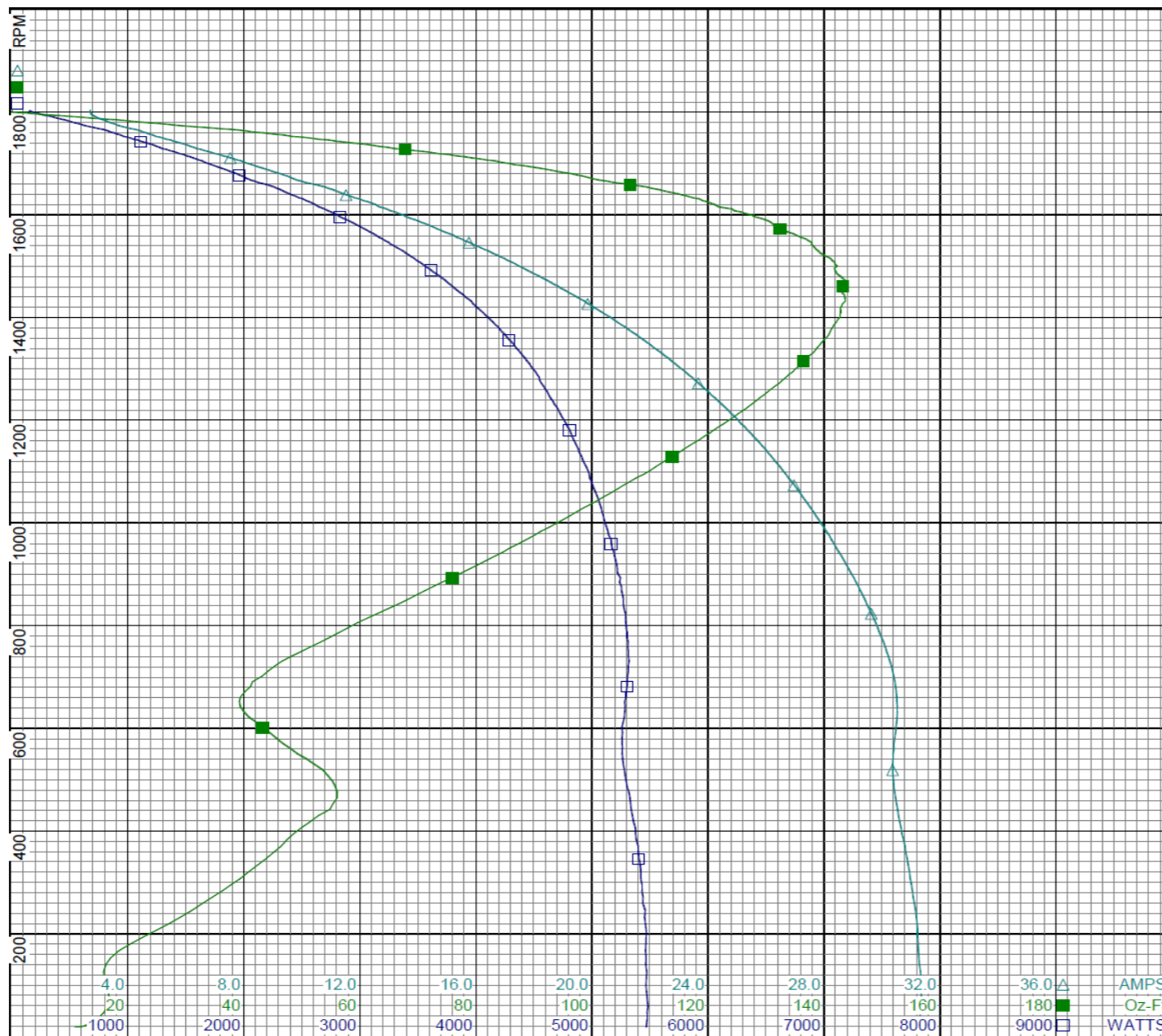
Performance Data



6K674BE

REV.

-



Curve Descriptions:

Motor(1) Test 8 Run 230V 60 Hz 4P
3 line Attempt #1

- SPEED vs WATTS
- SPEED vs TORQUE
- △ SPEED vs ILine

Motor Ratings:

(1) T063DMV2002 ID: 1

DRAWING NO.	PAGE 8 of 8	REV.
6K674BE		-

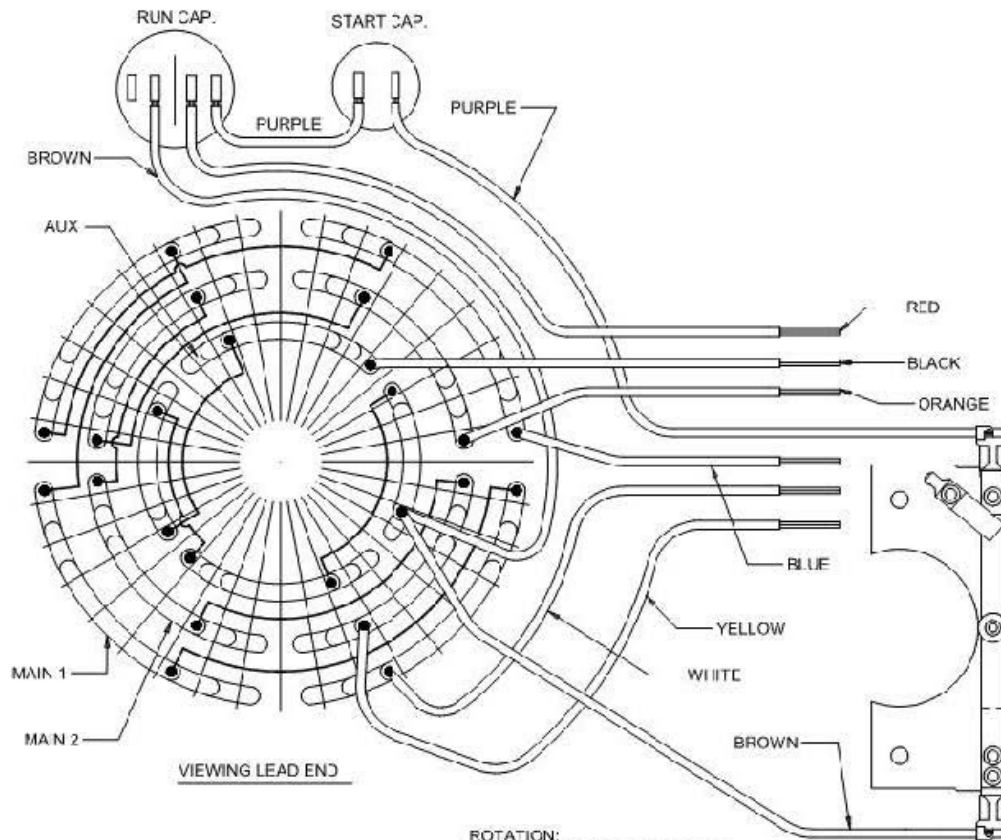
Dayton Electric Mfg. Co. Lake Forest, IL 60045 USA

Wiring Diagram

6K674BE

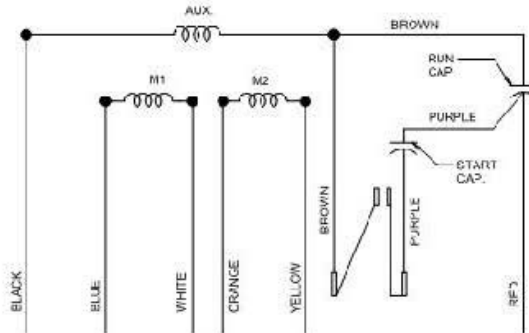
REV.

-



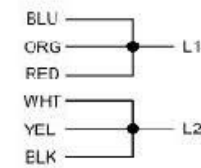
NOTE:
SECURE ALL LEADS TO
PREVENT INTERFERENCE
WITH MOVING PARTS.

ROTATION:
CCW SWITCH END REVERSIBLE
TO REVERSE ROTATION
INTERCHANGE BLACK AND
RED LEADS

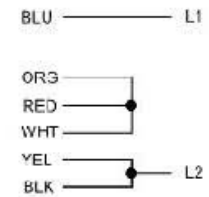


CONNECTIONS

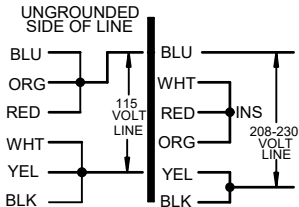
LOW VOLTAGE



HIGH VOLTAGE



T 4P DUAL VOLTAGE REV W/CAPS & NO PROT

Dayton[®]Part
No**6K674BE****INDUSTRIAL
MOTOR****HP:** 1.0**PH:** 1**VOLTS:** 115/208-230**HZ:** 60**AMPS:** 9.9/5.2-5.0**FR:** 56 C**RPM:** 1725**INS CL:** B**DUTY:** CONT**AMB:** 40 °C**SF:** 1.15**SFA:** 11.1/5.2-5.6**KVA CODE:** J**ENCL:** TEFC**MTR REF:** T63DMV-2002**THERMALLY PROTECTED:** NONEPROT. CODE: MFG. NO. **S.F. AT 208 VOLTS IS 1.0****Disconnect Power Before Making
Any Electrical Connections or Changes****CONNECTIONS****MOTOR IS CCW ROTATION LEAD END
TO REVERSE ROTATION INTERCHANGE
RED AND BLACK LEADS**

258501



E47479

Mfd for Dayton Electric Mfg. Co., Lake Forest, IL 60045 USA

Made in Mexico