

Dimensional Drawing

[illegible]

Performance Data



6K582BG

REV.
-

MOTOR PERFORMANCE

HP:	1.0							
Poles:	2							
No. of Speeds:	1							
Volts:	115/208-230	115	208	230				
HZ:	60	60	60	60				
Service Factor:	1.4							
Efficiency:	@ Rated Load	67.3	67.9	67.8				
Power Factor:	@ Rated Load	78.6	82.9	77.4				
Amps:	@ No Load							
	@ Rated Load	12.4	6.4	6.3				
	@ Service Factor	15.96	8.46	7.98				
	@ Locked Rotor	66.5	29.1	33.9				
RPM:	@ Rated Load	3498	3483	3508				
Ambient (°C):	40							
Altitude (FASL):								
Torques:	Breakdown	63.6	1.9	66.4				
	Locked Rotor	44.3	34.5	45				
	Pull-Up	42.7	33	42.9				
	Rated Load	24.4	24.4	24.4				
	Service Factor	34.09	34.09	34.09				
Watts:	Rated Load	1123	1109	1119				
KVA Code:	J	J	G	J				
Temperature Rise:	@ Rated Load	38.8	34.8	39.5				
	@ Service Factor	53.8	58.5	54.5				
Thermal Protector:	Trip Temp (°C)	139.5	147.2	144.1				
Winding Material:	Start (Auxiliary)	Al	Al	Al				
	Run (Main)	Al	Al	Al				
Capacitor(s):	Start (MFD / Volts)	238						
	No. of Start Capacitors							
	Run (MFD / Volts)	N/A						
	No. of Run Capacitors							

LOW SPEED PERFORMANCE DATA:

HP:								
Poles:								
Volts:								
HZ:								
Efficiency:	@ Rated Load							
Power Factor:	@ Rated Load							
Amps:	@ No Load							
	@ Rated Load							
	@ Service Factor							
	@ Locked Rotor							
Torques:	Bead Down							
	Locked Rotor							
	Pull-Up							
	Rated Load							
	Service Factor							
Watts:	@ Rated Load							
Temperature Rise:	@ Rated Load							
	@ Service Factor							

DRAWING NO. PAGE 1 of 1
6K582BG

REV.
-

Dayton Electric Mfg. Co. Lake Forest, IL 60045 USA

Performance Data



6K582BG		REV. -												
Dayton Manufacturing Company														
Motor Description				Test Conditions										
Model:		C063HKZ137301 6K582BG		Test Type:		Start		Run Cap:		0				
Motor ID:		3		Test Number:		2		Start Cap:		238 MFD 110 VOLT				
Poles:		2		Poles:		2		Environment:						
Volts:		115/208-230		Volts:		115		Tested:		8/2/2002 2:48:41 PM				
Frequency:		60		Hz:		60		Tested By:		Mitchell (Mitch), L.				
HP:		1		Rotation:				Gear Ratio:		1:1				
Speed:		3450		Special Cond:				Bearing Friction:		-0.37 Oz-Ft				
Phase:		1		Speed Conn:				Windage Torque:		-2.99 Oz-Ft				
Protector:		AUTO		TestBoard:		Amps Performance		Fixture #1						
Special Points		Vline(V)	Vaux(V)	Vcap(V)	Iline(A)	Imain(A)	Iaux(A)	Watts	RPM	Tq(Oz-ft)	HP	Eff(%)	PF(%)	Cap
		115.0	103.5	106.1	66.53	63.60	9.659	5945	0	44.31	0.000	0.0	77.7	241.4
		115.0	104.0	105.3	66.52	63.48	9.593	5947	71	43.97	0.037	0.5	77.7	241.7
PUT OZ-FT		115.0	105.3	103.4	66.47	63.31	9.385	5943	245	42.68	0.125	1.6	77.8	240.7
		115.0	106.3	102.1	66.45	63.15	9.281	5949	354	43.65	0.184	2.3	77.8	241.1
		115.0	108.9	99.3	66.18	62.58	9.009	5952	627	45.76	0.341	4.3	78.2	240.7
		115.0	111.8	96.6	65.76	61.80	8.757	5948	878	50.17	0.524	6.6	78.7	240.4
		115.0	115.8	94.9	65.25	60.85	8.571	5947	1110	54.10	0.715	9.0	79.3	239.5
		115.0	119.3	94.2	64.75	59.99	8.508	5959	1324	55.58	0.876	11.0	80.0	239.6
		115.0	121.8	91.5	64.10	59.11	8.247	5948	1524	59.21	1.074	13.5	80.7	239.1
		115.0	125.2	89.1	63.35	58.02	8.010	5927	1709	63.12	1.284	16.2	81.4	238.5
		115.0	129.3	87.3	62.56	56.87	7.825	5908	1881	66.12	1.481	18.7	82.1	237.8
		115.0	133.7	85.9	61.70	55.64	7.686	5884	2040	69.24	1.682	21.3	82.9	237.4
		115.0	138.8	85.1	60.77	54.33	7.602	5859	2187	72.40	1.885	24.0	83.8	236.9
		115.0	144.0	84.9	59.79	52.96	7.566	5828	2324	74.21	2.053	26.3	84.8	236.5
		115.0	149.1	86.2	58.62	51.35	7.687	5794	2449	75.02	2.187	28.2	85.9	236.7
		115.0	155.5	87.8	57.58	50.12	7.826	5758	2565	76.83	2.346	30.4	87.0	236.4
		115.0	161.7	89.8	56.50	48.63	7.999	5712	2671	77.20	2.455	32.1	87.9	236.4
		115.0	168.4	92.3	55.40	47.14	8.245	5667	2769	77.17	2.544	33.5	89.0	236.9
		115.0	175.1	95.7	54.25	45.62	8.547	5607	2860	75.80	2.580	34.3	89.9	237.0
		115.0	182.1	99.8	53.07	44.08	8.933	5544	2943	74.65	2.616	35.2	90.8	237.5
		115.0	189.3	104.6	51.86	42.50	9.403	5473	3019	72.47	2.605	35.5	91.8	238.4
		115.0	196.5	109.9	50.63	40.95	9.929	5394	3089	69.45	2.554	35.3	92.6	239.6
		115.0	203.4	115.4	49.45	39.46	10.482	5316	3150	65.22	2.446	34.3	93.5	241.0
		115.0	210.0	121.0	48.26	37.98	11.066	5232	3206	60.79	2.320	33.1	94.3	242.6
		115.0	216.8	126.6	46.98	36.52	11.646	5126	3264	56.80	2.207	32.1	94.9	244.1
		115.0	223.2	132.1	45.75	35.12	12.266	5036	3307	49.50	1.949	28.9	95.7	246.2
		115.0	229.6	138.9	44.13	33.23	12.993	4891	3357	42.68	1.706	26.0	96.4	248.2
		115.0	235.5	144.9	42.68	31.61	13.668	4759	3401	34.70	1.405	22.0	97.0	250.2
		115.0	241.4	150.9	41.12	29.96	14.384	4615	3442	26.87	1.101	17.8	97.6	252.9
		115.0	246.2	156.0	39.61	28.40	14.988	4457	3481	17.51	0.726	12.1	97.9	254.9
		115.0	251.2	161.5	37.82	26.57	15.703	4276	3519	6.99	0.293	5.1	98.3	258.0
		115.0	254.0	164.7	36.47	25.26	16.162	4138	3547	0.00	0.000	0.0	98.7	260.4

DRAWING NO. PAGE 1 of 8

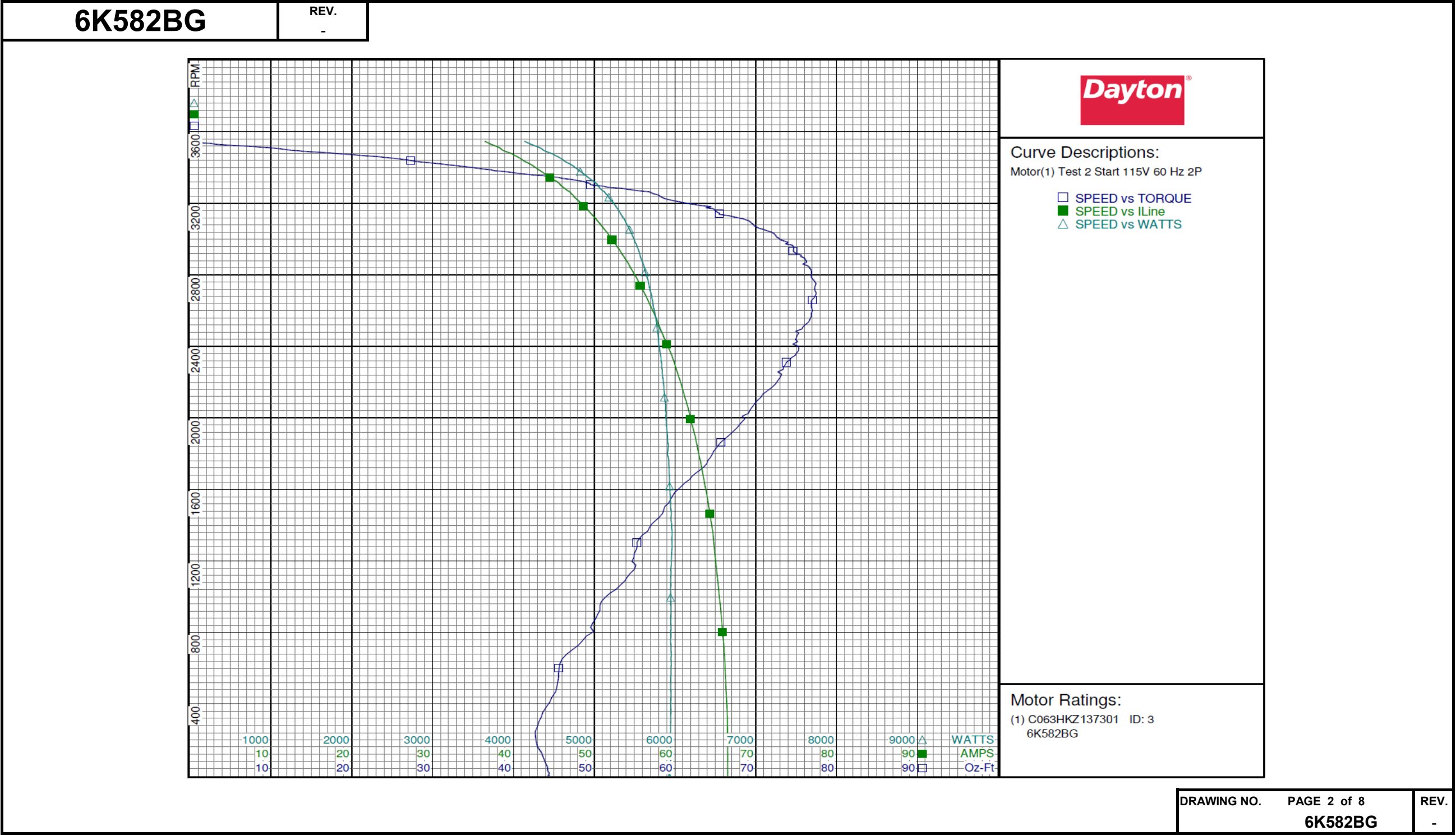
6K582BG

REV.
-

DRAWING NO.	PAGE 1 of 8	REV.
	6K582BG	-

Dayton Electric Mfg. Co. Lake Forest, IL 60045 USA

Performance Data



Dayton Electric Mfg. Co. Lake Forest, IL 60045 USA

Performance Data



6K582BG		REV. -						
Dayton Manufacturing Company								
Motor Description				Test Conditions				
Model:	C063HKZ137301 6K582BG			Test Type:	Run	Run Cap:	0	
Motor ID:	3			Test Number:	3	Start Cap:	238 MFD 110 VOLT	
Poles:	2			Poles:	2	Environment:		
Volts:	115/208-230			Volts:	115	Tested:	8/2/2002 2:35:46 PM	
Frequency:	60			Hz:	60	Tested By:	Mitchell (Mitch), L.	
HP:	1			Rotation:		Gear Ratio:	1:1	
Speed:	3450			Special Cond:		Bearing Friction:	-0.26 Oz-Ft	
Phase:	1			Speed Conn:		Windage Torque:	-2.87 Oz-Ft	
Protector:	AUTO			TestBoard:	Amps Performance Fixture #1			
Special Points	Vline(V)	Iline(A)	Watts	RPM	Tq(Oz-ft)	HP	Eff (%)	PF (%)
	115.0	7.64	217	3588	0.00	0.000	0.0	24.7
	115.0	9.28	664	3548	11.93	0.504	56.6	62.2
	115.0	11.66	1017	3508	21.56	0.900	66.0	75.9
24.35 OZ-FT	115.0	12.43	1123	3498	24.35	1.014	67.3	78.6
	115.0	15.26	1463	3470	32.20	1.330	67.8	83.4
34.09 OZ-FT	115.0	15.96	1544	3461	34.09	1.405	67.9	84.1
3450 RPM	115.0	16.75	1631	3450	36.13	1.484	67.9	84.7
	115.0	18.61	1833	3428	40.15	1.638	66.7	85.7
	115.0	21.96	2190	3382	47.89	1.928	65.7	86.7
	115.0	24.87	2485	3338	52.51	2.087	62.6	86.9
	115.0	28.06	2797	3287	56.36	2.206	58.8	86.7
	115.0	30.90	3058	3237	59.85	2.306	56.3	86.0
	115.0	33.98	3326	3176	61.84	2.338	52.4	85.1
	115.0	36.71	3549	3118	62.22	2.309	48.5	84.1
BDT OZ-FT	115.0	38.75	3727	3066	63.55	2.320	46.4	83.6
	115.0	39.73	3790	3045	63.02	2.285	45.0	82.9
	115.0	42.41	3993	2969	62.64	2.214	41.4	81.9
	115.0	44.67	4147	2895	61.08	2.105	37.9	80.7
	115.0	46.91	4289	2813	59.39	1.989	34.6	79.5
	115.0	49.20	4427	2718	56.95	1.843	31.1	78.3
	115.0	51.31	4548	2616	53.70	1.673	27.4	77.1
	115.0	53.27	4644	2505	50.43	1.504	24.2	75.8
	115.0	55.06	4723	2385	46.83	1.330	21.0	74.6
	115.0	56.70	4791	2254	42.06	1.129	17.6	73.5
	115.0	58.20	4845	2114	38.37	0.966	14.9	72.4
	115.0	59.52	4882	1963	33.75	0.789	12.1	71.3
	115.0	60.75	4924	1800	29.22	0.626	9.5	70.5
	115.0	61.78	4941	1624	24.61	0.476	7.2	69.5
	115.0	62.68	4959	1436	20.40	0.349	5.2	68.8
	115.0	63.45	4976	1235	16.27	0.239	3.6	68.2
	115.0	64.10	4987	1020	12.10	0.147	2.2	67.7
	115.0	64.67	4994	788	7.49	0.070	1.0	67.2
	115.0	64.98	4989	549	3.56	0.023	0.3	66.8
	115.0	65.12	4987	290	0.57	0.002	0.0	66.6

DRAWING NO.

PAGE 3 of 8

6K582BG

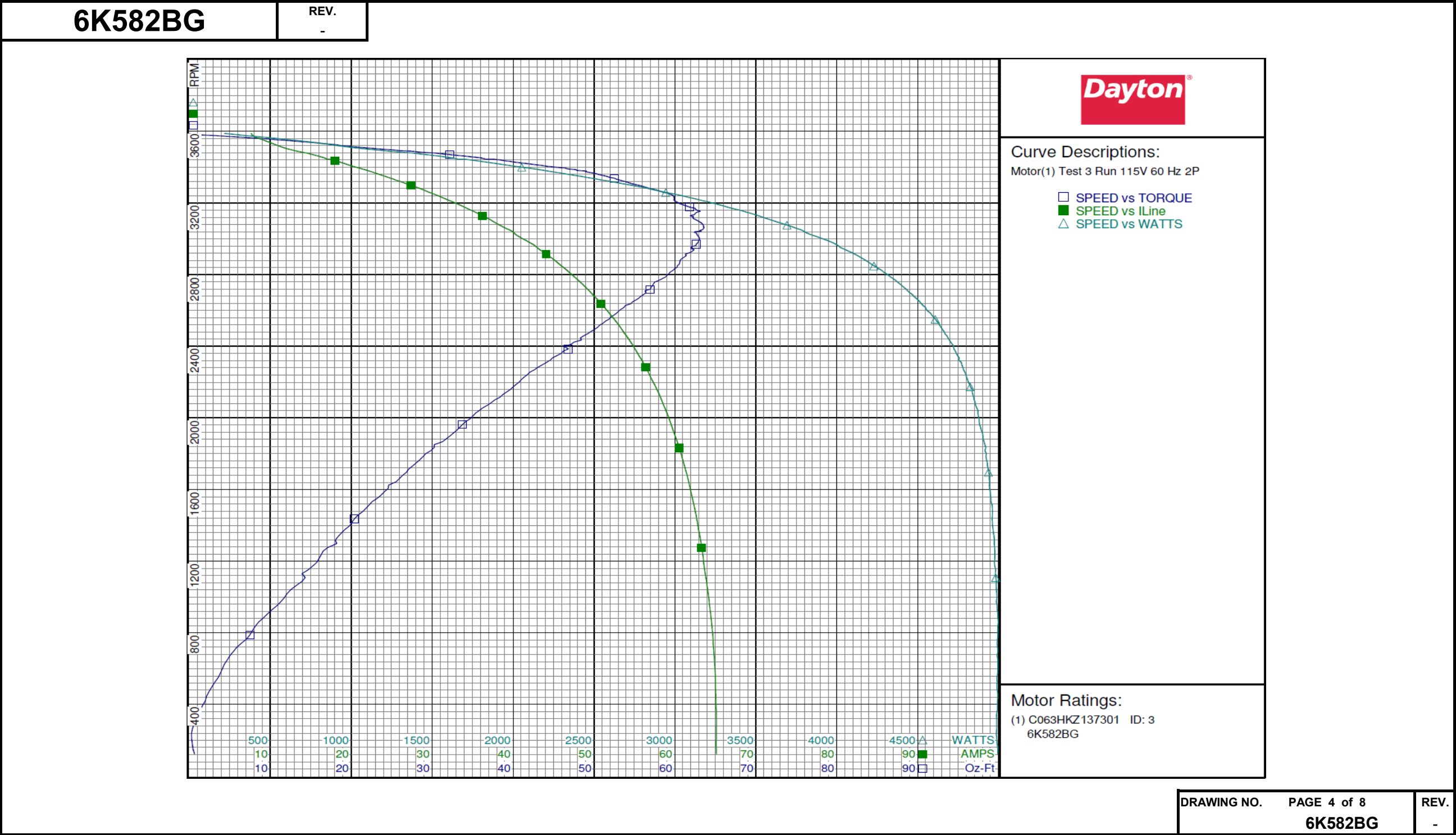
REV.

-

DRAWING NO.	PAGE 3 of 8	REV.
	6K582BG	-

Dayton Electric Mfg. Co. Lake Forest, IL 60045 USA

Performance Data



Dayton Electric Mfg. Co. Lake Forest, IL 60045 USA

Performance Data



6K582BG		REV. -												
Dayton Manufacturing Company														
Motor Description				Test Conditions										
Model:		C063HKZ137301 6K583BG		Test Type:		Start		Run Cap:		0				
Motor ID:		3		Test Number:		10		Start Cap:		238 MFD 110 VOLT				
Poles:		2		Poles:		2		Environment:						
Volts:		115/208-230		Volts:		230		Tested:		8/2/2002 2:20:11 PM				
Frequency:		60		Hz:		60		Tested By:		Mitchell (Mitch), L.				
HP:		1		Rotation:				Gear Ratio:		1:1				
Speed:		3450		Special Cond:				Bearing Friction:		-0.31 Oz-Ft				
Phase:		1		Speed Conn:				Windage Torque:		-2.51 Oz-Ft				
Protector:		AUTO		TestBoard:		Amps Performance		Fixture #1						
Special Points		Vline(V)	Vaux(V)	Vcap(V)	Iline(A)	Imain(A)	Iaux(A)	Watts	RPM	Tq(Oz-ft)	HP	Eff(%)	PF(%)	Cap
		230.0	192.5	106.4	33.92	31.78	9.729	6006	0	45.02	0.000	0.0	77.0	242.6
		230.0	193.4	105.7	33.89	31.67	9.661	5998	71	44.33	0.037	0.5	77.0	242.5
PUT OZ-FT		230.0	195.3	104.0	33.89	31.52	9.498	5988	217	42.94	0.111	1.4	76.8	242.3
		230.0	197.0	102.3	33.80	31.33	9.331	5984	354	43.77	0.184	2.3	77.0	241.9
		230.0	201.1	99.6	33.66	30.85	9.062	5983	627	46.17	0.345	4.3	77.3	241.4
		230.0	205.2	97.0	33.45	30.27	8.804	5983	877	50.23	0.524	6.5	77.8	240.8
		230.0	210.2	94.9	33.19	29.58	8.611	5990	1110	54.24	0.717	8.9	78.5	240.6
		230.0	214.2	94.2	32.95	28.93	8.537	5997	1325	55.99	0.883	11.0	79.1	240.4
		230.0	217.7	91.4	32.61	28.33	8.260	5986	1524	59.71	1.083	13.5	79.8	239.8
		230.0	222.4	88.7	32.23	27.59	8.010	5967	1709	63.47	1.292	16.1	80.5	239.4
		230.0	227.4	86.7	31.81	26.78	7.807	5949	1881	66.69	1.493	18.7	81.3	238.8
		230.0	232.7	85.1	31.38	25.93	7.649	5928	2040	70.30	1.707	21.5	82.1	238.5
		230.0	238.5	83.9	30.89	25.09	7.538	5898	2188	73.11	1.904	24.1	83.0	238.2
		230.0	244.3	83.3	30.39	24.17	7.476	5862	2324	75.33	2.084	26.5	83.9	238.0
		230.0	250.7	83.4	29.86	23.22	7.479	5832	2449	77.44	2.258	28.9	84.9	237.8
		230.0	256.0	84.5	29.24	22.18	7.585	5782	2565	77.79	2.375	30.6	86.0	238.0
		230.0	263.0	86.7	28.65	21.13	7.790	5744	2671	78.50	2.496	32.4	87.2	238.2
		230.0	269.9	89.0	28.06	20.12	8.007	5688	2770	78.71	2.595	34.0	88.1	238.6
		230.0	277.1	91.9	27.46	19.15	8.285	5629	2859	78.19	2.662	35.3	89.1	239.0
		230.0	284.3	95.7	26.85	18.19	8.644	5561	2942	76.78	2.689	36.1	90.1	239.6
		230.0	291.7	100.2	26.20	17.22	9.085	5487	3019	75.05	2.697	36.7	91.0	240.4
		230.0	299.0	105.3	25.56	16.30	9.593	5405	3089	72.08	2.650	36.6	91.9	241.7
		230.0	305.8	110.5	24.95	15.49	10.118	5336	3148	68.39	2.563	35.8	93.0	242.8
		230.0	313.2	116.5	24.26	14.63	10.739	5237	3208	62.94	2.404	34.2	93.9	244.5
		230.0	320.0	122.5	23.54	13.85	11.356	5122	3264	57.66	2.240	32.6	94.6	245.9
		230.0	326.7	128.4	22.81	13.13	12.001	5000	3315	51.70	2.040	30.4	95.3	248.0
		230.0	332.2	134.0	22.12	12.56	12.608	4881	3357	44.75	1.789	27.3	95.9	249.6
		230.0	337.7	139.6	21.37	12.00	13.257	4748	3400	37.62	1.522	23.9	96.6	251.9
		230.0	343.3	145.9	20.56	11.54	13.980	4599	3441	29.16	1.195	19.4	97.3	254.1
		230.0	348.1	151.4	19.71	11.12	14.642	4429	3479	19.85	0.822	13.8	97.7	256.5
		230.0	352.7	156.9	18.80	10.90	15.319	4243	3519	8.94	0.375	6.6	98.1	258.9
		230.0	356.1	161.1	17.92	10.75	15.909	4055	3553	0.00	0.000	0.0	98.4	261.9

DRAWING NO.

PAGE 5 of 8

6K582BG

REV.

-

DRAWING NO.	PAGE 5 of 8	REV.
6K582BG		-

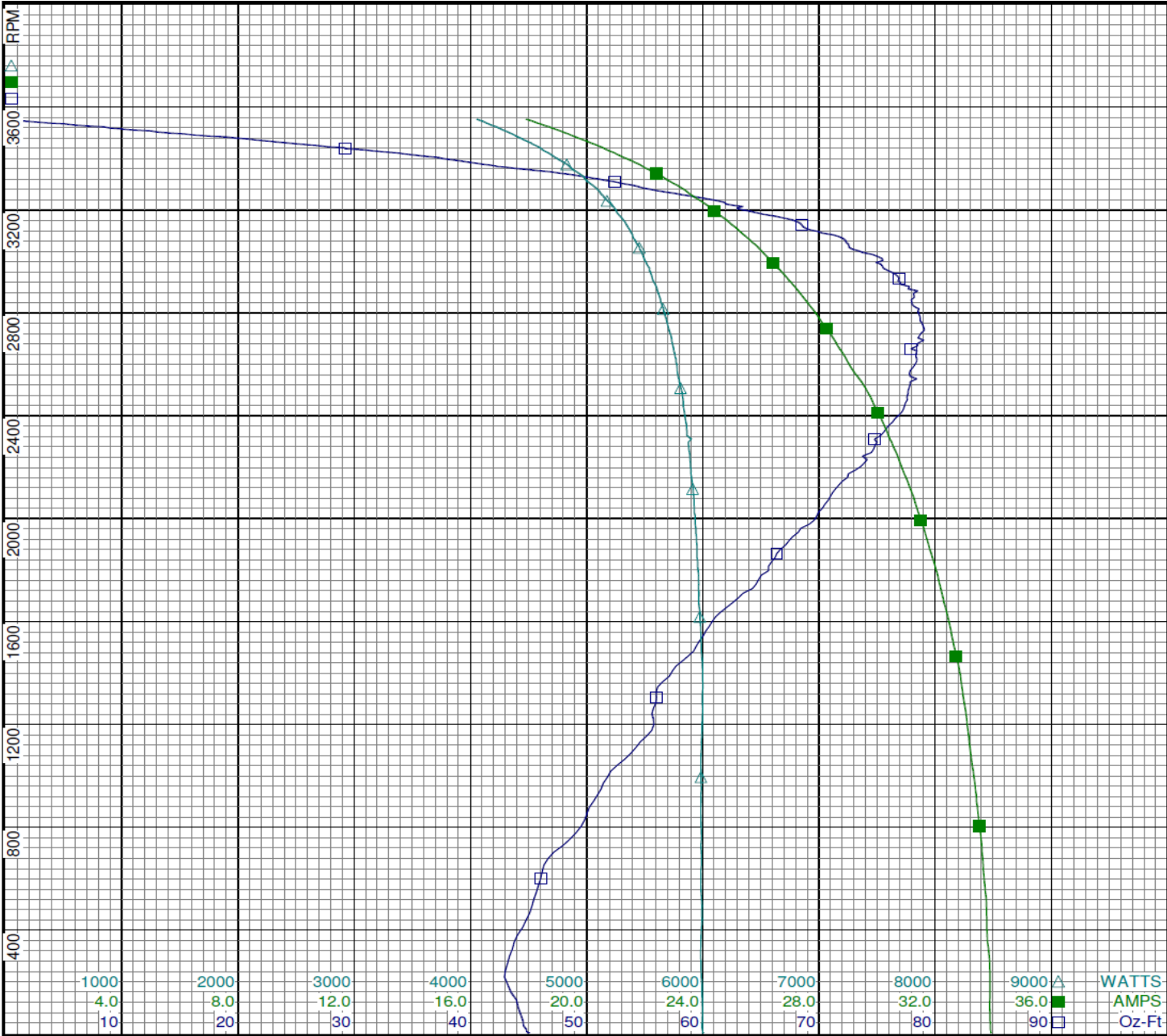
Dayton Electric Mfg. Co. Lake Forest, IL 60045 USA

Performance Data



6K582BG

REV.
-



Curve Descriptions:
Motor(1) Test 10 Start 230V 60 Hz 2P

Performance Data



6K582BG		REV. -							
Dayton Manufacturing Company									
Motor Description					Test Conditions				
Model:	C063HKZ137301 6K582BG			Test Type:	Run		Run Cap:	0	
Motor ID:	3			Test Number:	11		Start Cap:	238 MFD 110 VOLT	
Poles:	2			Poles:	2		Environment:		
Volts:	115/208-230			Volts:	230		Tested:	8/2/2002 12:51:26 PM	
Frequency:	60			Hz:	60		Tested By:	Mitchell (Mitch), L.	
HP:	1			Rotation:			Gear Ratio:	1:1	
Speed:	3450			Special Cond:			Bearing Friction:	-0.29 Oz-Ft	
Phase:	1			Speed Conn:			Windage Torque:	-2.90 Oz-Ft	
Protector:	AUTO			TestBoard:	Amps Performance		Fixture #1		
Special Points	Vline (V)	Iline (A)	Watts	RPM	Tq (Oz-ft)	HP	Eff (%)	PF (%)	
	230.0	3.87	210	3588	0.00	0.000	0.0	23.6	
	230.0	4.77	688	3547	12.81	0.541	58.7	62.7	
	230.0	6.23	1105	3509	23.95	1.001	67.5	77.2	
24.35 OZ-FT	230.0	6.28	1119	3508	24.35	1.017	67.8	77.4	
	230.0	7.87	1502	3469	33.56	1.386	68.8	82.9	
34.09 OZ-FT	230.0	7.98	1526	3466	34.09	1.407	68.8	83.2	
3450 RPM	230.0	8.56	1659	3450	37.34	1.534	68.9	84.2	
	230.0	9.30	1821	3430	40.85	1.668	68.3	85.1	
	230.0	11.21	2224	3383	49.61	1.998	67.0	86.3	
	230.0	12.86	2562	3336	54.77	2.175	63.3	86.7	
	230.0	14.43	2866	3287	59.10	2.312	60.2	86.4	
	230.0	15.98	3145	3235	62.16	2.394	56.8	85.6	
	230.0	17.58	3424	3173	64.87	2.450	53.4	84.7	
	230.0	18.86	3631	3118	64.93	2.410	49.5	83.7	
BDT OZ-FT	230.0	19.71	3766	3080	66.37	2.433	48.2	83.1	
	230.0	20.28	3845	3051	65.05	2.363	45.9	82.4	
	230.0	21.77	4068	2972	65.21	2.307	42.3	81.2	
	230.0	22.96	4227	2895	63.26	2.180	38.5	80.0	
	230.0	24.13	4368	2810	60.95	2.039	34.8	78.7	
	230.0	25.25	4496	2717	58.50	1.892	31.4	77.4	
	230.0	26.32	4599	2615	55.16	1.717	27.9	76.0	
	230.0	27.30	4691	2504	51.52	1.536	24.4	74.7	
	230.0	28.21	4771	2384	47.96	1.361	21.3	73.5	
	230.0	29.03	4834	2253	42.84	1.149	17.7	72.4	
	230.0	29.76	4878	2114	38.87	0.978	15.0	71.3	
	230.0	30.43	4916	1962	34.14	0.797	12.1	70.2	
	230.0	31.02	4942	1799	29.54	0.633	9.5	69.3	
	230.0	31.55	4963	1624	24.87	0.481	7.2	68.4	
	230.0	31.99	4974	1436	20.55	0.351	5.3	67.6	
	230.0	32.35	4986	1235	16.27	0.239	3.6	67.0	
	230.0	32.67	4989	1019	12.04	0.146	2.2	66.4	
	230.0	32.95	4998	786	6.74	0.063	0.9	65.9	
	230.0	33.11	4993	543	2.92	0.019	0.3	65.6	
	230.0	33.18	4991	293	0.68	0.002	0.0	65.4	

DRAWING NO.

PAGE 7 of 8

6K582BG

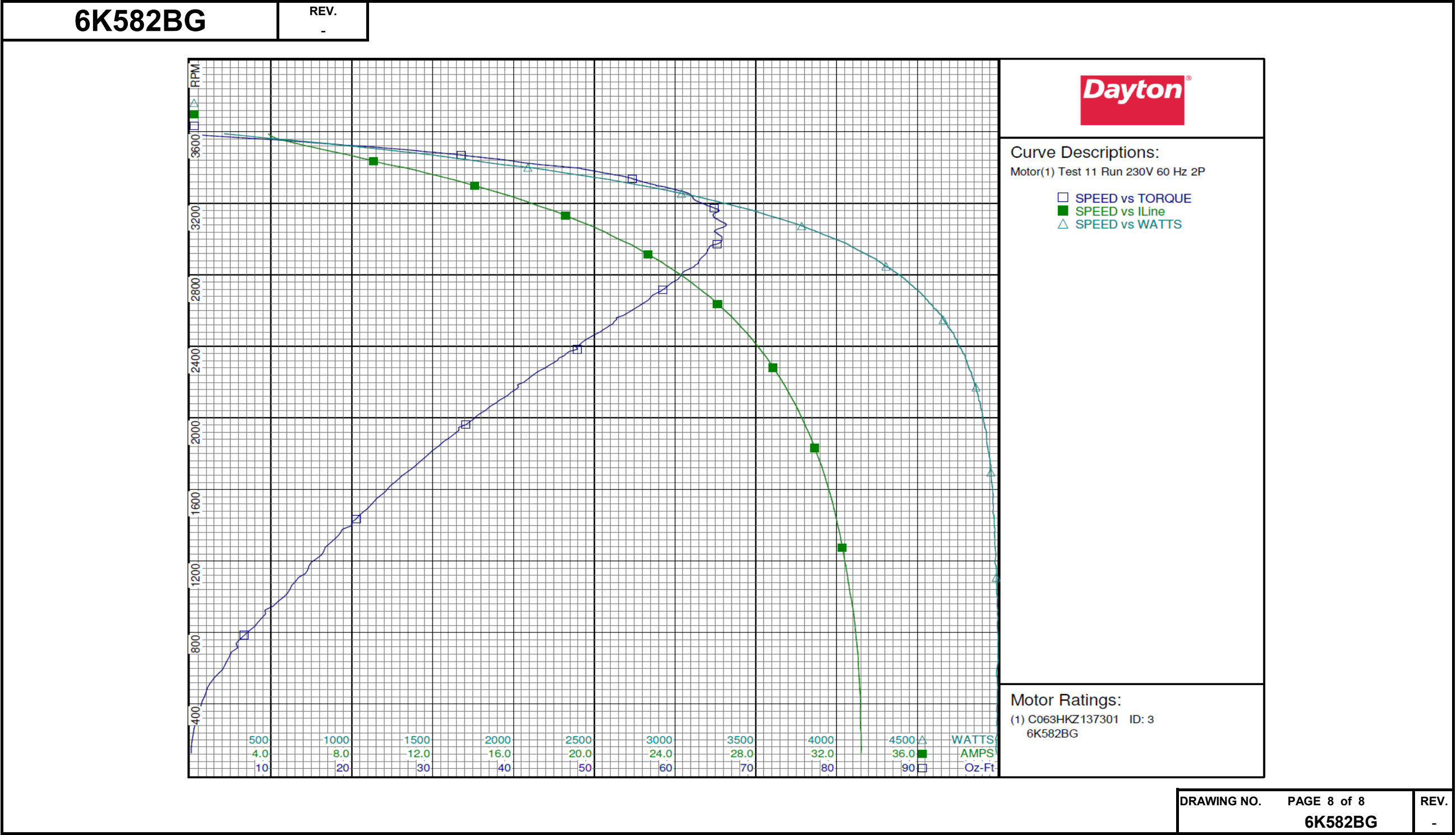
REV.

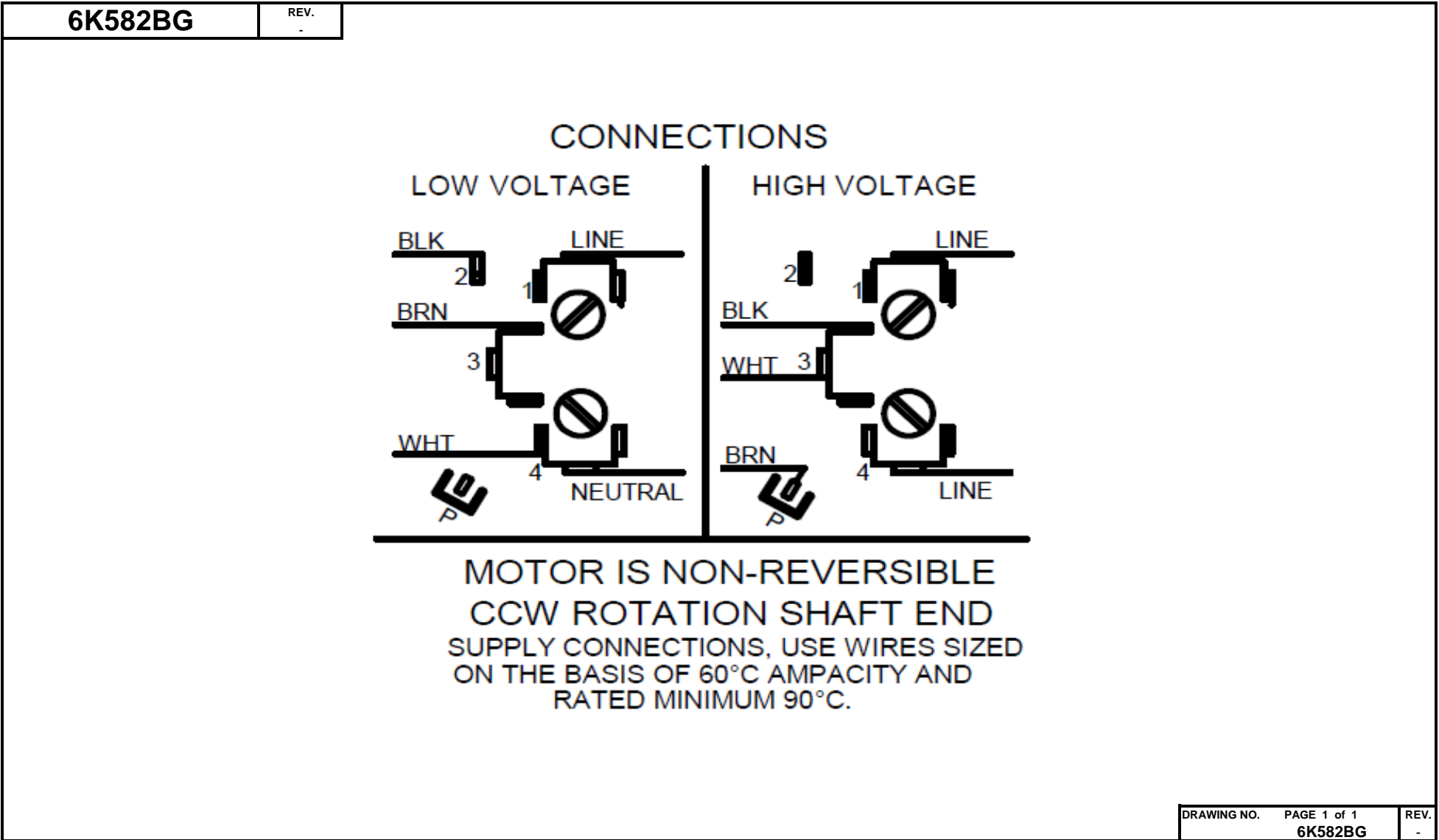
-

DRAWING NO.	PAGE 7 of 8	REV.
	6K582BG	-

Dayton Electric Mfg. Co. Lake Forest, IL 60045 USA

Performance Data





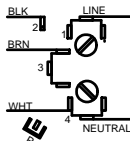
Dayton[®]

JET PUMP MOTOR

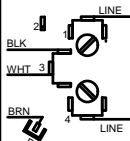
HP: 1**VOLTS:** 115/208-230**AMPS:** 13.2/6.8-6.6**RPM:** 3450**DUTY:** CONT**SF:** 1.4**KVA CODE:** J**ENCL:** ODP**THERMALLY PROTECTED:** AUTOMFG. NO. PROT. CODE: **MTR REF:** C63CXHKZ-1373**PH:** 1**HZ:** 60**FR:** 56J**INS CL:** B**AMB:** 40 °C**SFA:** 16.2/8.6-8.1AVG. F.L.
EFF.Part
No **6K582BG****Disconnect Power Before Making Any
Electrical Connections or Changes**

CONNECTIONS

LOW VOLTAGE



HIGH VOLTAGE

**MOTOR IS NON-REVERSIBLE****CCW ROTATION SHAFT END**SUPPLY CONNECTIONS, USE WIRES SIZED
ON THE BASIS OF 60°C AMPACITY AND
RATED MINIMUM 90°C.

E37403



258501

Mfd for Dayton Electric Mfg. Co., Lake Forest, IL 60045 USA

Made in Mexico