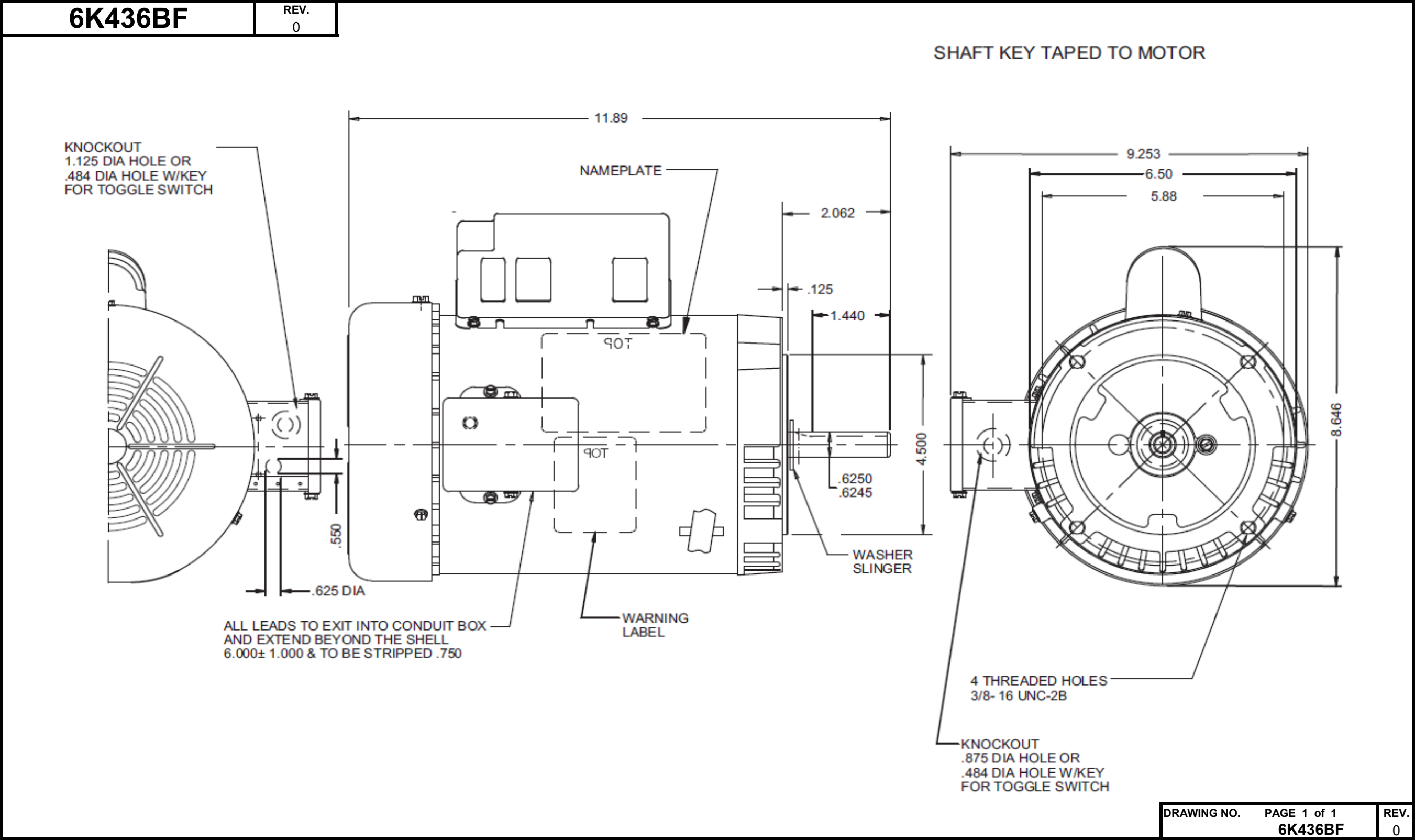


Dimensional Drawing



Dayton Electric Mfg. Co. Lake Forest, IL 60045 USA



6K436BF

REV.
-

SPLIT-PHASE & CAPACITOR START MOTOR PERFORMANCE

HP:	3/4							
Poles:	4							
Ambient (°C):	40							
Altitude (FASL):								
No. of Speeds:	1							
Volts:	115/208-230	115	208	230				
HZ:	60	60	60	60				
Service Factor:	1.15							
Efficiency:	@ Rated Load	63.20	62.40	62.20				
Power Factor:	@ Rated Load	68.30	75.40	68.60				
Amps:	@ No Load	9.11	3.71	4.34				
	@ Rated Load	11.27	5.72	5.70				
	@ Service Factor	12.15	6.46	6.21				
	@ Locked Rotor	60.73	27.20	30.43				
RPM:	@ Rated Load	1729	1706	1728				
Torques:	Breakdown	88.2	68.8	87.2				
	Locked Rotor	150.33	106.26	131.98				
	Pull-Up	148.90	104.38	129.70				
	Rated Load	36.43	36.92	36.45				
	Service Factor	42.22	42.95	42.25				
Watts:	Rated Load	885	897	900				
KVA Code:								
Temperature Rise:	@ Rated Load	N/A	N/A	N/A				
	@ Service Factor	N/A	N/A	N/A				
Thermal Protector:	Trip Temp (°C)	N/A	N/A	N/A				
Winding Material:	Start (Auxiliary)	Cu						
	Run (Main)	Cu						
Capacitor(s):	Start (MFD / Volts)	495 MFD / 165 V						
	No. of Start Capacitors	1						
	Run (MFD / Volts)	N/A						
	No. of Run Capacitors	N/A						

LOW SPEED PERFORMANCE DATA:

HP:								
Poles:								
Volts:		120	208	230	277	460	100	200
HZ:		60	60	60	60	60	50	50
Efficiency:	@ Rated Load							
Power Factor:	@ Rated Load							
Amps:	@ No Load							
	@ Rated Load							
	@ Service Factor							
	@ Locked Rotor							
Torques:	BreakDown							
	Locked Rotor							
	Pull-Up							
	Rated Load							
	Service Factor							
Watts:	@ Rated Load							
Temperature Rise:	@ Rated Load							
	@ Service Factor							

DRAWING NO. PAGE 1 of 1
6K436BF

REV.
-

Performance Data



6K436BF

REV.

-

Dayton Manufacturing Company

Motor Description

Model: C063CXHYM1182
 Motor ID: 1
 Poles: 4
 Volts: 115/208-230
 Frequency: 60
 HP: 3/4
 Speed: 1725
 Phase: 1
 Protector: CEJ65CS

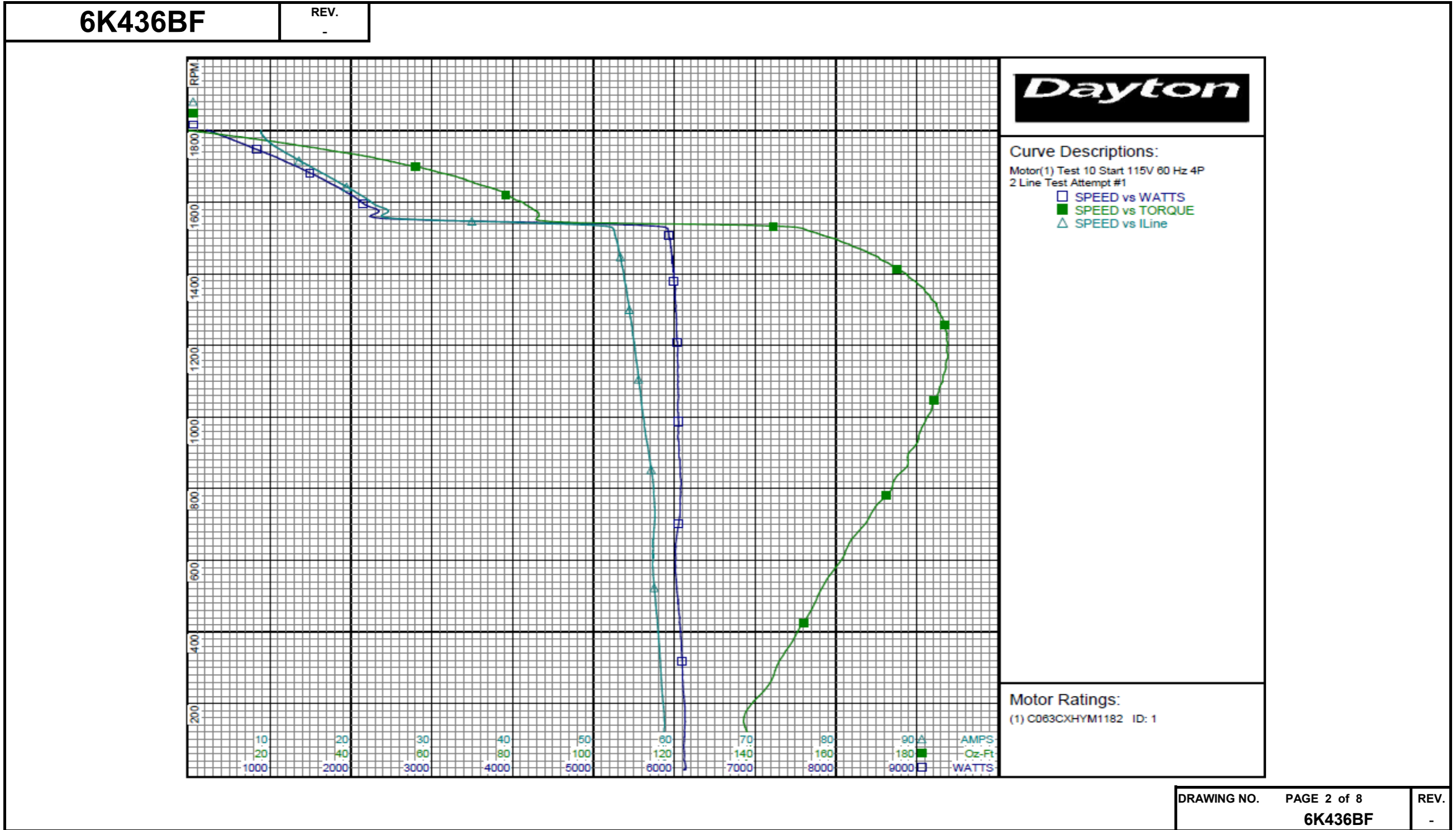
Test Conditions

Test Type: Start
 Test Number: 10
 Poles: 4
 Volts: 115
 Hz: 60
 Rotation:
 Special Cond: 2 Line Test
 Speed Conn:
 TestBoard: Amps Performance Fixture #3
 Run Cap: 0
 Start Cap: 0µfd
 Tested: 8/7/2012 12:34:48 PM
 Tested By: Sharp, Gerald
 Gear Ratio: 1:1
 Bearing Friction: -0.71 Oz-Ft
 Windage Torque: -3.13 Oz-Ft

Special Points	Vline (V)	Iline (A)	Watts	RPM	Tq (Oz-ft)	HP	Eff (%)	PF (%)
PUT OZ-FT	115.0	58.78	6131	16	136.14	0.026	0.3	90.7
	115.0	58.73	6126	15	133.79	0.023	0.3	90.7
	115.0	58.74	6121	42	137.73	0.069	0.8	90.6
	115.0	58.67	6131	191	138.59	0.315	3.8	90.9
	115.0	58.18	6091	346	147.54	0.608	7.5	91.0
	115.0	57.67	6049	489	155.14	0.903	11.1	91.2
	115.0	57.38	6016	616	162.13	1.189	14.7	91.2
	115.0	57.62	6071	731	168.70	1.468	18.0	91.6
	115.0	57.29	6074	835	175.05	1.740	21.4	92.2
	115.0	56.62	6054	931	180.24	1.997	24.6	93.0
	115.0	56.05	6042	1019	183.64	2.227	27.5	93.7
	115.0	55.62	6048	1098	186.41	2.437	30.1	94.6
	115.0	55.22	6039	1172	187.71	2.620	32.4	95.1
	115.0	54.83	6031	1239	187.25	2.762	34.2	95.7
	115.0	54.45	6019	1300	185.14	2.865	35.5	96.1
	115.0	54.10	6015	1356	181.93	2.936	36.4	96.7
	115.0	53.71	5991	1406	176.48	2.953	36.8	97.0
	115.0	53.32	5975	1451	169.56	2.929	36.6	97.5
	115.0	52.88	5947	1493	160.75	2.857	35.8	97.8
	115.0	52.20	5882	1531	149.79	2.729	34.6	98.0
	115.0	28.30	2706	1552	85.83	1.586	43.7	83.1
	115.0	23.58	2233	1587	84.08	1.589	53.1	82.3
	115.0	21.11	1994	1621	78.38	1.512	56.6	82.2
	115.0	18.88	1763	1650	71.44	1.404	59.4	81.2
	115.0	16.78	1536	1678	63.89	1.276	62.0	79.6
	115.0	14.86	1314	1702	54.91	1.112	63.2	76.9
	115.0	13.02	1090	1725	45.58	0.936	64.1	72.8
	115.0	11.39	855	1745	34.43	0.715	62.4	65.3
	115.0	10.03	636	1765	23.26	0.489	57.3	55.2
	115.0	9.15	410	1785	10.48	0.223	40.5	39.0
	115.0	8.89	219	1802	0.00	0.000	0.0	21.5

DRAWING NO. PAGE 1 of 8 REV.
6K436BF -

Performance Data



Dayton Electric Mfg. Co. Lake Forest, IL 60045 USA

Performance Data



6K436BF REV.
-

Dayton Manufacturing Company

Motor Description

Model: C063CXHYM1182
 Motor ID: 1
 Poles: 4
 Volts: 115/208-230
 Frequency: 60
 HP: 3/4
 Speed: 1725
 Phase: 1
 Protector: CEJ65CS

Test Conditions

Test Type: Run Run Cap: 0
 Test Number: 4 Start Cap: 0µfd
 Poles: 4
 Volts: 115 Tested: 8/7/2012 1:07:36 PM
 Hz: 60 Tested By: Sharp, Gerald
 Rotation:
 Special Cond: Gear Ratio: 1:1
 Speed Conn: Bearing Friction: -0.76 Oz-Ft
 TestBoard: Amps Performance Fixture #3 Windage Torque: -3.12 Oz-Ft

Special Points	Vline (V)	Iline (A)	Watts	RPM	Tq (Oz-ft)	HP	Eff (%)	PF (%)
	115.0	8.60	206	1797	0.00	0.000	0.0	20.8
	115.0	9.04	451	1778	13.38	0.283	46.9	43.4
	115.0	10.16	686	1757	26.45	0.553	60.2	58.7
0.75 HP	115.0	11.32	872	1741	36.18	0.750	64.1	67.0
36.6 OZ-FT	115.0	11.37	881	1740	36.60	0.758	64.2	67.4
	115.0	11.60	916	1738	38.33	0.793	64.6	68.6
42 OZ-FT	115.0	12.16	992	1731	42.00	0.866	65.1	70.9
1725 RPM	115.0	12.70	1063	1725	45.25	0.929	65.2	72.8
	115.0	13.26	1135	1718	48.63	0.995	65.4	74.4
	115.0	15.01	1349	1697	57.81	1.168	64.6	78.2
	115.0	16.99	1573	1674	66.20	1.320	62.6	80.5
	115.0	19.17	1805	1648	74.84	1.468	60.7	81.8
	115.0	21.25	2018	1622	80.18	1.548	57.2	82.6
	115.0	23.40	2228	1593	85.80	1.627	54.5	82.8
	115.0	25.61	2434	1560	90.00	1.672	51.2	82.6
	115.0	27.72	2623	1526	91.87	1.669	47.5	82.3
	115.0	29.86	2807	1488	92.81	1.644	43.7	81.7
BDT OZ-FT	115.0	30.87	2887	1469	93.51	1.635	42.3	81.3
	115.0	31.89	2974	1448	92.98	1.603	40.2	81.1
	115.0	33.91	3126	1403	91.42	1.527	36.4	80.2
	115.0	35.84	3268	1355	88.73	1.431	32.7	79.3
	115.0	37.67	3394	1303	84.93	1.317	29.0	78.3
	115.0	39.41	3503	1246	79.88	1.185	25.2	77.3
	115.0	41.03	3600	1186	74.21	1.047	21.7	76.3
	115.0	42.55	3682	1119	67.25	0.896	18.1	75.2
	115.0	43.95	3750	1047	59.60	0.743	14.8	74.2
	115.0	45.24	3804	971	51.41	0.594	11.7	73.1
	115.0	46.40	3846	889	41.89	0.443	8.6	72.1
	115.0	47.39	3858	800	32.26	0.307	5.9	70.8
	115.0	48.21	3870	705	22.45	0.188	3.6	69.8
	115.0	48.54	3848	606	20.82	0.150	2.9	68.9
	115.0	48.59	3869	501	25.54	0.152	2.9	69.2
	115.0	49.02	3911	388	21.60	0.100	1.9	69.4
	115.0	49.50	3935	265	13.97	0.044	0.8	69.1
	115.0	49.76	3945	133	5.90	0.009	0.2	68.9

DRAWING NO. PAGE 3 of 8 REV.
6K436BF -

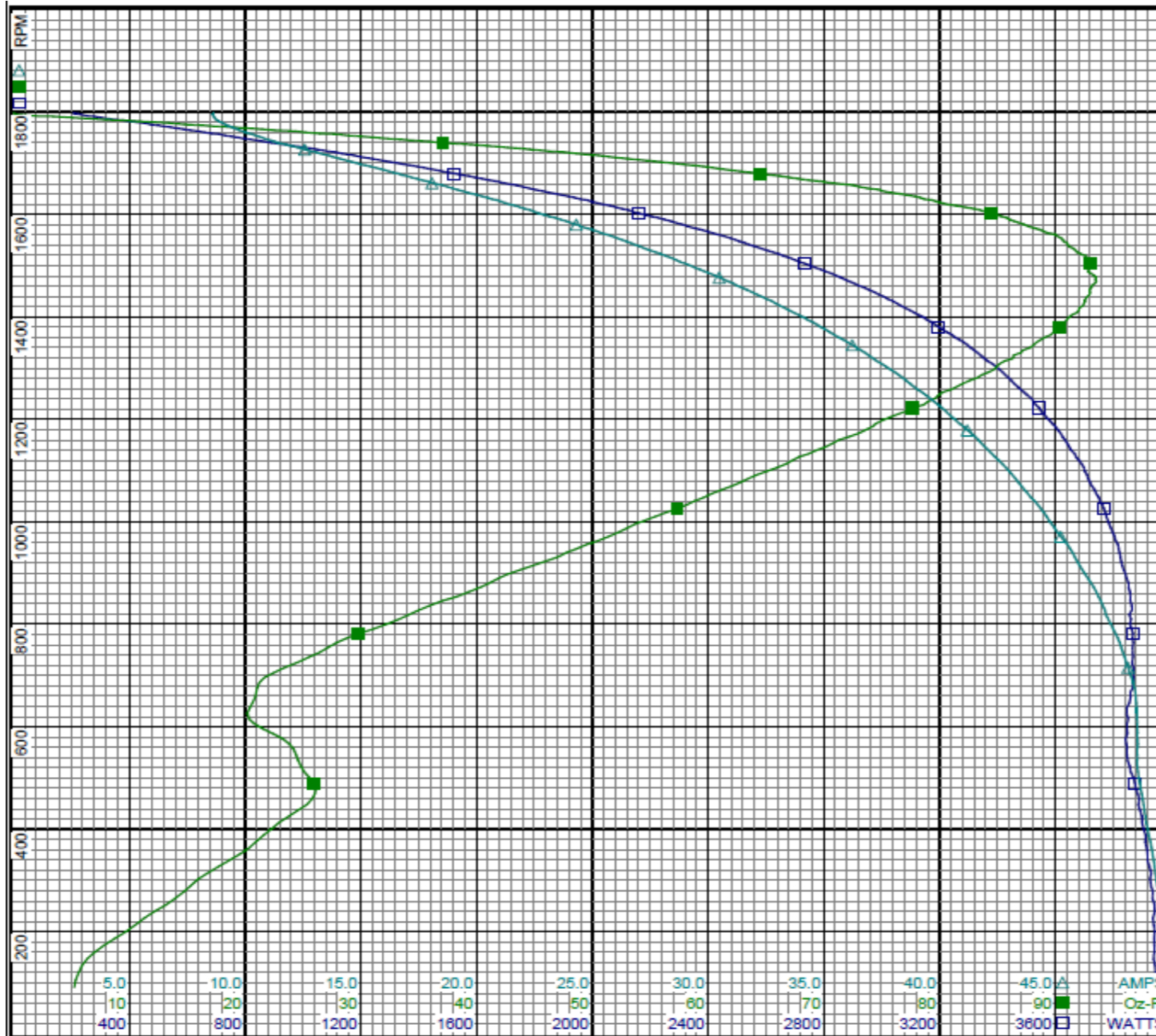
Performance Data



6K436BF

REV.

-



Curve Descriptions:

Motor(1) Test 4 Run 115V 60 Hz 4P
Attempt #1

- SPEED vs WATTS
- SPEED vs TORQUE
- △ SPEED vs ILine

Motor Ratings:

(1) C063CXHYM1182 ID: 1

DRAWING NO.	PAGE 4 of 8	REV.
6K436BF		-

Dayton Electric Mfg. Co. Lake Forest, IL 60045 USA

Performance Data



6K436BF

REV.

-

Dayton Manufacturing Company

Motor Description

Model: C063CXHYM1182
 Motor ID: 1
 Poles: 4
 Volts: 115/208-230
 Frequency: 60
 HP: 3/4
 Speed: 1725
 Phase: 1
 Protector: CEJ65CS

Test Conditions

Test Type: Start
 Test Number: 15
 Poles: 4
 Volts: 230
 Hz: 60
 Rotation:
 Special Cond: 2 Line Test
 Speed Conn:
 TestBoard: Amps Performance Fixture #3
 Run Cap: 0
 Start Cap: 0µfd
 Tested: 8/7/2012 10:13:08 AM
 Tested By: Sharp, Gerald
 Gear Ratio: 1:1
 Bearing Friction: -0.71 Oz-Ft
 Windage Torque: -2.89 Oz-Ft

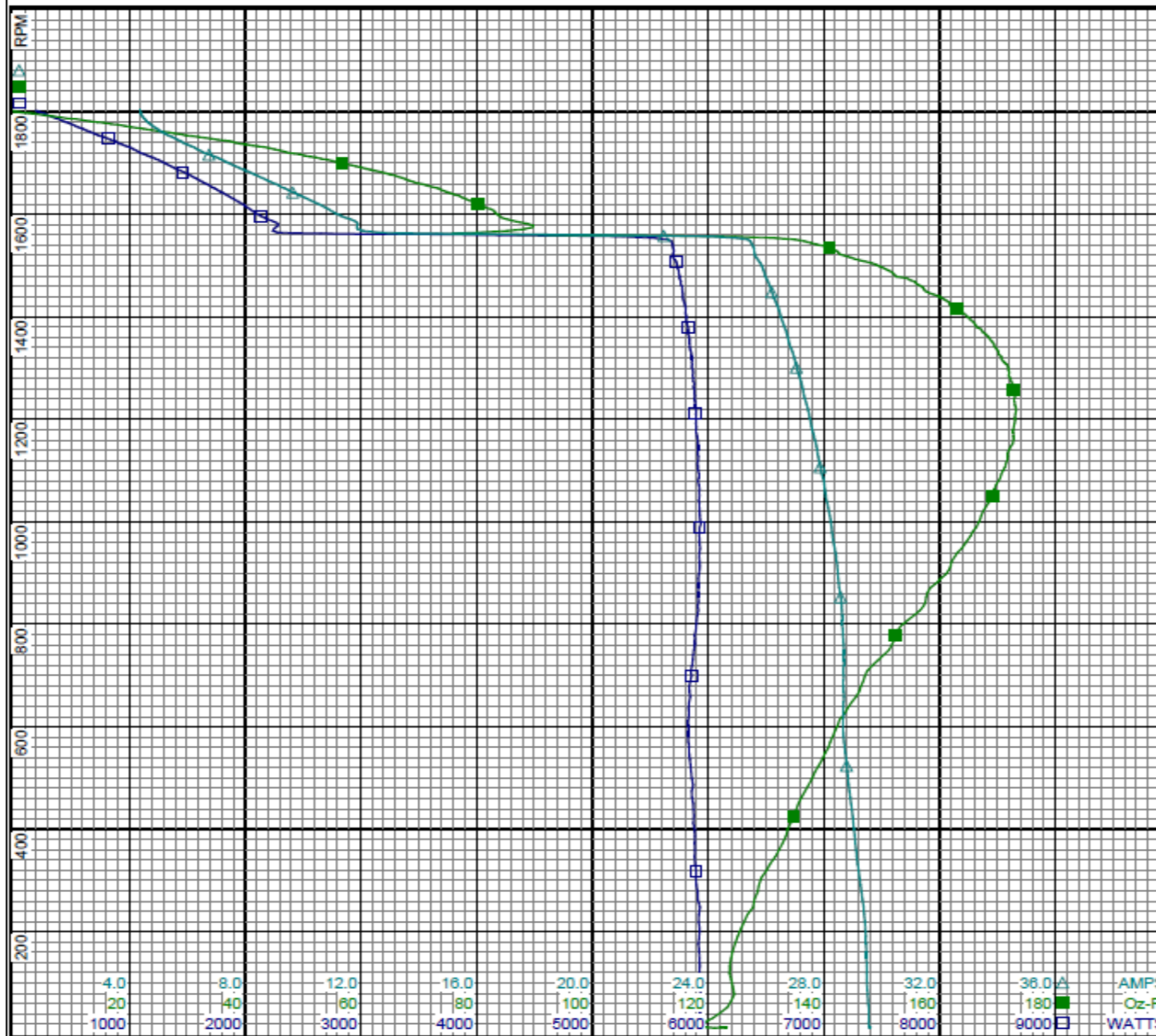
Special Points	Vline (V)	Iline (A)	Watts	RPM	Tq (Oz-ft)	HP	Eff (%)	PF (%)
	230.0	29.60	5948	14	122.01	0.020	0.3	87.4
PUT OZ-FT	230.0	29.55	5943	18	118.71	0.025	0.3	87.4
	230.0	29.54	5932	41	122.03	0.059	0.7	87.3
	230.0	29.45	5923	190	125.10	0.283	3.6	87.4
	230.0	29.13	5882	346	131.61	0.542	6.9	87.8
	230.0	28.86	5870	486	137.32	0.794	10.1	88.4
	230.0	28.67	5829	614	142.70	1.042	13.3	88.4
	230.0	28.69	5867	729	149.36	1.297	16.5	88.9
	230.0	28.62	5910	835	157.23	1.564	19.7	89.8
	230.0	28.42	5922	931	162.58	1.802	22.7	90.6
	230.0	28.17	5926	1019	167.43	2.032	25.6	91.4
	230.0	27.90	5914	1099	170.92	2.237	28.2	92.2
	230.0	27.62	5899	1174	172.75	2.413	30.5	92.8
	230.0	27.34	5881	1240	172.90	2.552	32.4	93.5
	230.0	27.06	5859	1301	171.84	2.662	33.9	94.1
	230.0	26.77	5839	1356	168.69	2.723	34.8	94.8
	230.0	26.48	5804	1407	164.06	2.748	35.3	95.3
	230.0	26.18	5777	1453	157.29	2.720	35.1	95.9
	230.0	25.89	5736	1494	150.37	2.675	34.8	96.3
	230.0	25.59	5701	1531	141.68	2.582	33.8	96.9
	230.0	18.28	3582	1561	86.23	1.602	33.4	85.2
	230.0	11.76	2226	1587	86.11	1.627	54.5	82.3
	230.0	10.46	1963	1621	80.15	1.547	58.8	81.6
	230.0	9.37	1737	1651	73.34	1.441	61.9	80.6
	230.0	8.32	1508	1678	65.03	1.299	64.2	78.8
	230.0	7.35	1287	1702	55.80	1.130	65.5	76.1
	230.0	6.43	1057	1724	45.92	0.943	66.5	71.5
	230.0	5.67	839	1745	35.35	0.734	65.3	64.4
	230.0	5.02	621	1764	23.78	0.499	60.0	53.8
	230.0	4.54	389	1786	10.67	0.227	43.5	37.3
	230.0	4.38	193	1803	0.00	0.000	0.0	19.2

DRAWING NO. PAGE 5 of 8 REV.
 6K436BF -

Performance Data



6K436BF REV. -



Curve Descriptions:
 Motor(1) Test 15 Start 230V 60 Hz 4P
 2 Line Test Attempt #1
 □ SPEED vs WATTS
 ■ SPEED vs TORQUE
 △ SPEED vs ILine

Motor Ratings:
 (1) C063CXHYM1182 ID: 1

DRAWING NO. PAGE 6 of 8 REV.
 6K436BF -

Dayton Electric Mfg. Co. Lake Forest, IL 60045 USA

Performance Data



6K436BF

REV.

-

Dayton Manufacturing Company

Motor Description

Model: C063CXHYM1182
 Motor ID: 1
 Poles: 4
 Volts: 115/208-230
 Frequency: 60
 HP: 3/4
 Speed: 1725
 Phase: 1
 Protector: CEJ65CS

Test Conditions

Test Type: Run
 Test Number: 12
 Poles: 4
 Volts: 230
 Hz: 60
 Rotation:
 Special Cond:
 Speed Conn:
 TestBoard: Amps Performance Fixture #3
 Run Cap: 0
 Start Cap: 0µfd
 Tested: 8/7/2012 8:24:08 AM
 Tested By: Sharp, Gerald
 Gear Ratio: 1:1
 Bearing Friction: -0.73 Oz-Ft
 Windage Torque: -3.16 Oz-Ft

Special Points	Vline (V)	Iline (A)	Watts	RPM	Tq (Oz-ft)	HP	Eff (%)	PF (%)
	230.0	4.18	218	1799	0.00	0.000	0.0	22.6
	230.0	4.44	461	1779	13.84	0.293	47.4	45.1
	230.0	5.04	700	1759	26.83	0.562	59.9	60.3
0.75 HP	230.0	5.63	884	1743	36.14	0.750	63.3	68.3
36.6 OZ-FT	230.0	5.68	898	1743	36.60	0.759	63.1	68.8
	230.0	5.86	948	1739	38.79	0.803	63.2	70.3
42 OZ-FT	230.0	6.12	1012	1733	42.00	0.867	63.9	71.9
1725 RPM	230.0	6.46	1099	1725	45.70	0.938	63.7	73.9
	230.0	6.70	1155	1719	47.96	0.982	63.4	75.0
	230.0	7.64	1385	1698	57.79	1.168	62.9	78.8
	230.0	8.68	1614	1674	66.58	1.327	61.3	80.9
	230.0	9.75	1838	1648	73.63	1.445	58.6	82.0
	230.0	10.79	2048	1622	80.35	1.551	56.5	82.5
	230.0	11.90	2261	1593	84.98	1.612	53.2	82.6
	230.0	13.00	2457	1562	88.38	1.644	49.9	82.2
	230.0	14.06	2650	1527	90.86	1.651	46.5	81.9
BDT OZ-FT	230.0	14.80	2782	1500	92.06	1.644	44.1	81.7
	230.0	15.14	2832	1490	91.91	1.630	42.9	81.3
	230.0	16.17	3002	1448	91.81	1.583	39.3	80.7
	230.0	17.18	3157	1404	89.99	1.504	35.6	79.9
	230.0	18.16	3293	1356	87.42	1.411	32.0	78.9
	230.0	19.08	3413	1304	83.41	1.295	28.3	77.8
	230.0	19.95	3525	1247	78.21	1.161	24.6	76.8
	230.0	20.77	3613	1186	72.37	1.021	21.1	75.6
	230.0	21.53	3694	1120	65.91	0.879	17.7	74.6
	230.0	22.24	3757	1049	58.23	0.727	14.4	73.5
	230.0	22.89	3809	972	50.14	0.580	11.4	72.4
	230.0	23.46	3835	889	41.20	0.436	8.5	71.1
	230.0	23.98	3862	801	31.54	0.301	5.8	70.0
	230.0	24.39	3856	706	23.39	0.197	3.8	68.7
	230.0	24.53	3829	607	23.21	0.168	3.3	67.9
	230.0	24.56	3851	502	28.35	0.170	3.3	68.2
	230.0	24.79	3893	387	24.21	0.112	2.1	68.3
	230.0	25.03	3924	266	16.97	0.054	1.0	68.2
	230.0	25.18	3934	133	6.69	0.011	0.2	67.9

DRAWING NO.	PAGE 7 of 8	REV.
6K436BF		-

Dayton Electric Mfg. Co. Lake Forest, IL 60045 USA

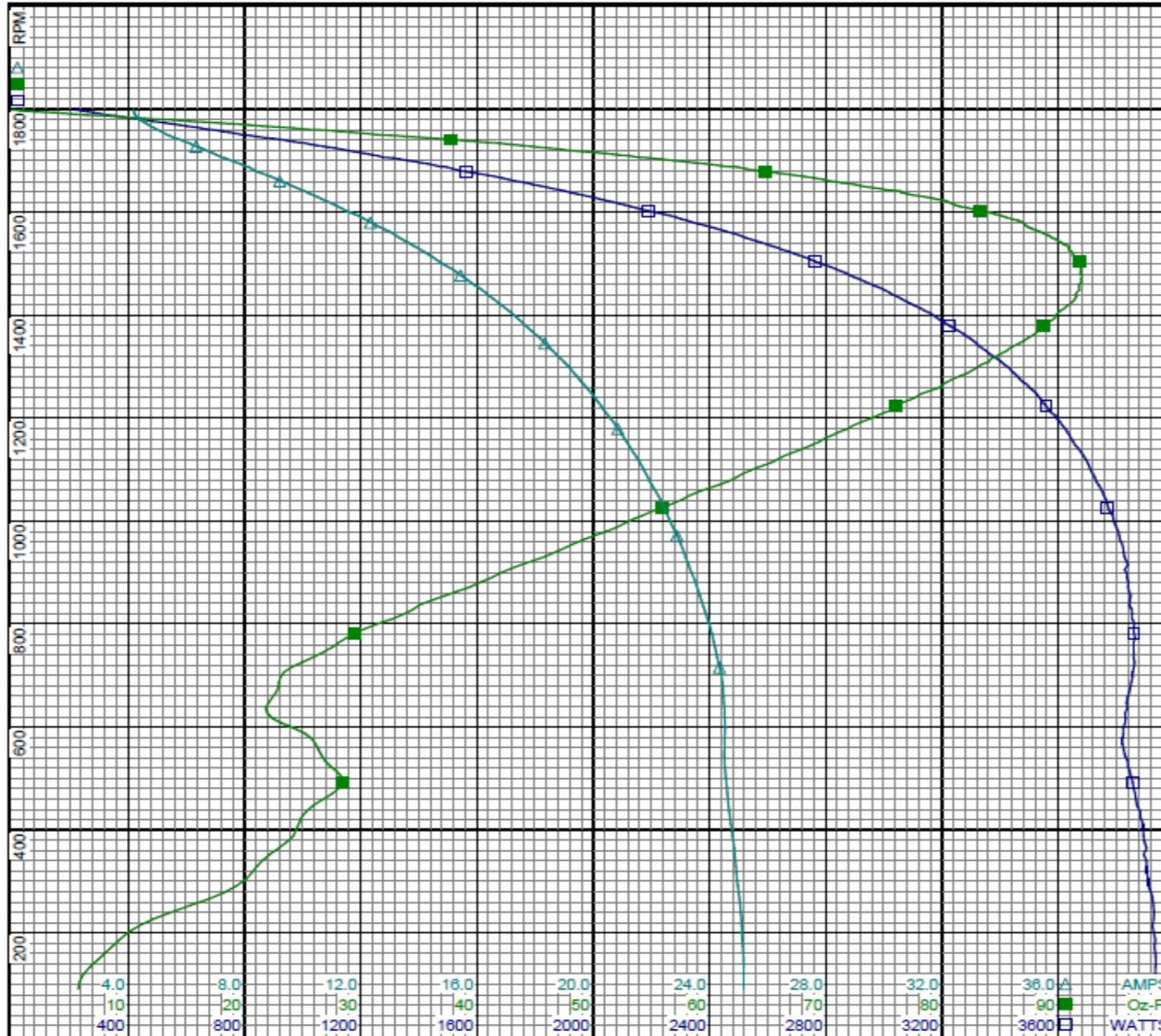
Performance Data



6K436BF

REV.

-



Curve Descriptions:

Motor(1) Test 12 Run 230V 60 Hz 4P
Attempt #1

- SPEED vs WATTS
- SPEED vs TORQUE
- △ SPEED vs ILine

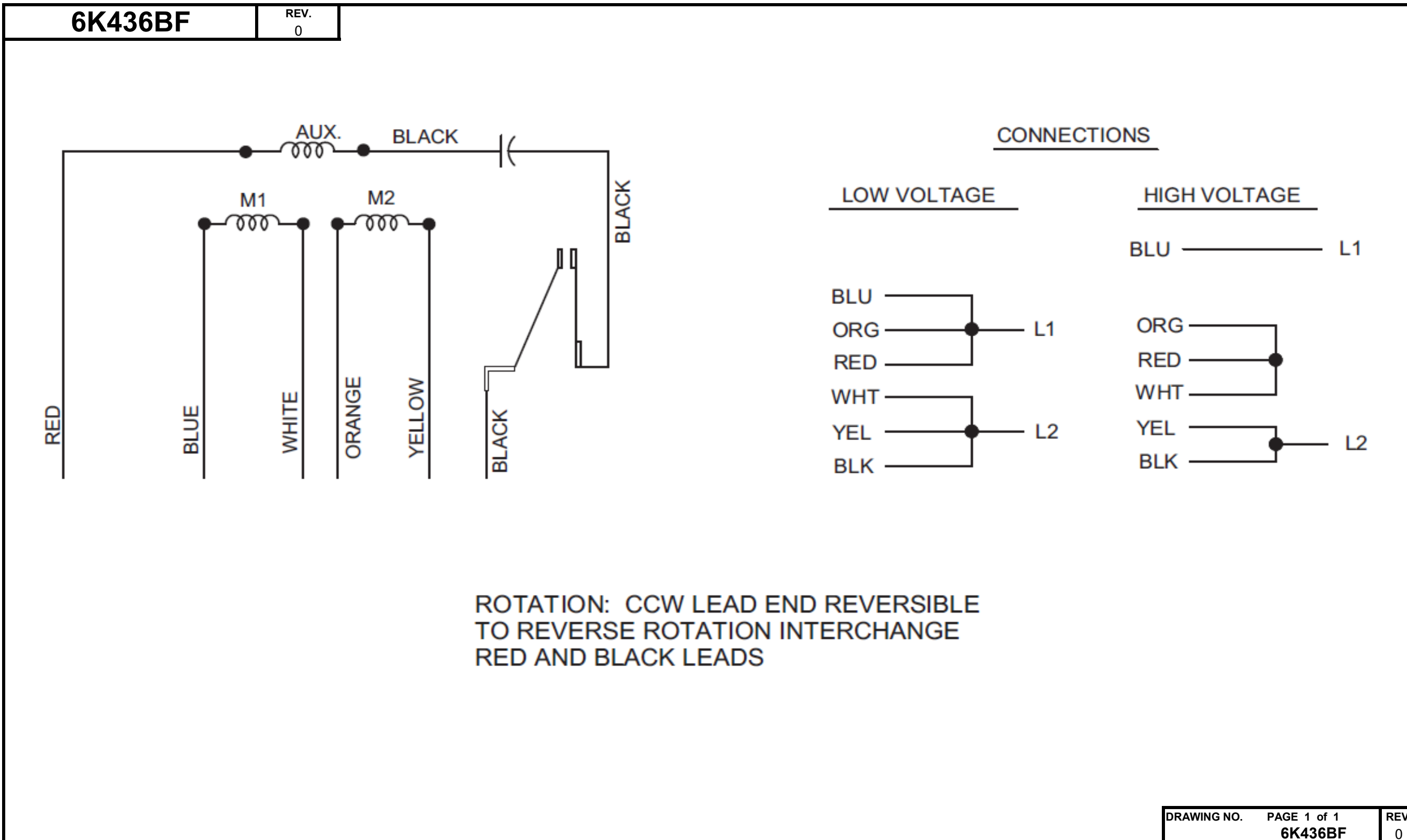
Motor Ratings:

(1) C063CXHYM1182 ID: 1

DRAWING NO.	PAGE 8 of 8	REV.
6K436BF		-

Dayton Electric Mfg. Co. Lake Forest, IL 60045 USA

Wiring Diagram





Part No **6K436BE**

INDUSTRIAL MOTOR

HP: 3/4

PH: 1

VOLTS: 115/208-230

HZ: 60

AMPS: 11.0/5.4-5.5

FR: 56 C

RPM: 1725

INS CL: B

DUTY: CONT

AMB: 40 °C

SF: 1.15

SFA: 11.8/5.9-5.9

KVA CODE: L

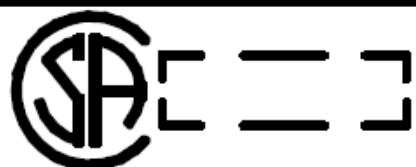
ENCL: TEFC

MTR REF: C63JBY-1202

THERMALLY PROTECTED: NONE

PROT. CODE: MFG. NO.

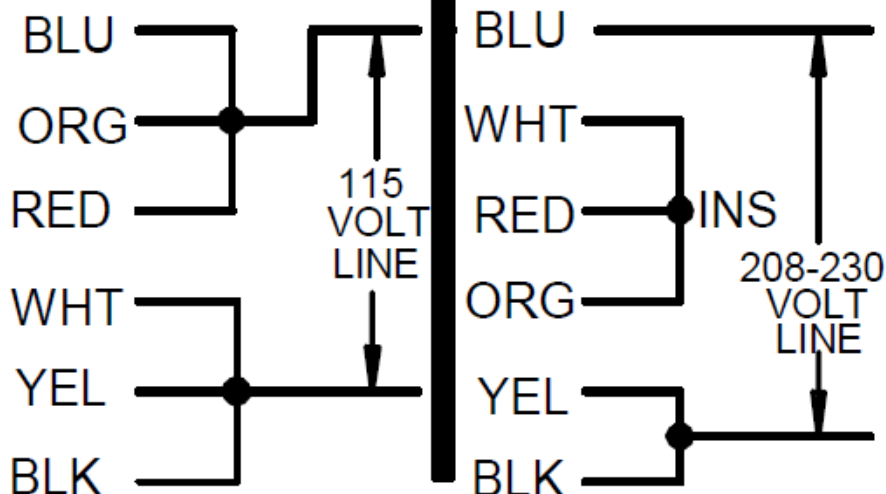
S.F. AT 208 VOLTS IS 1.0



Disconnect Power Before Making Any Electrical Connections or Changes

CONNECTIONS

UNGROUND
SIDE OF LINE



MOTOR IS CCW ROTATION LEAD END TO REVERSE ROTATION INTERCHANGE RED AND BLACK LEADS

Mfd for Dayton Electric Mfg. Co., Lake Forest, IL 60045 USA

