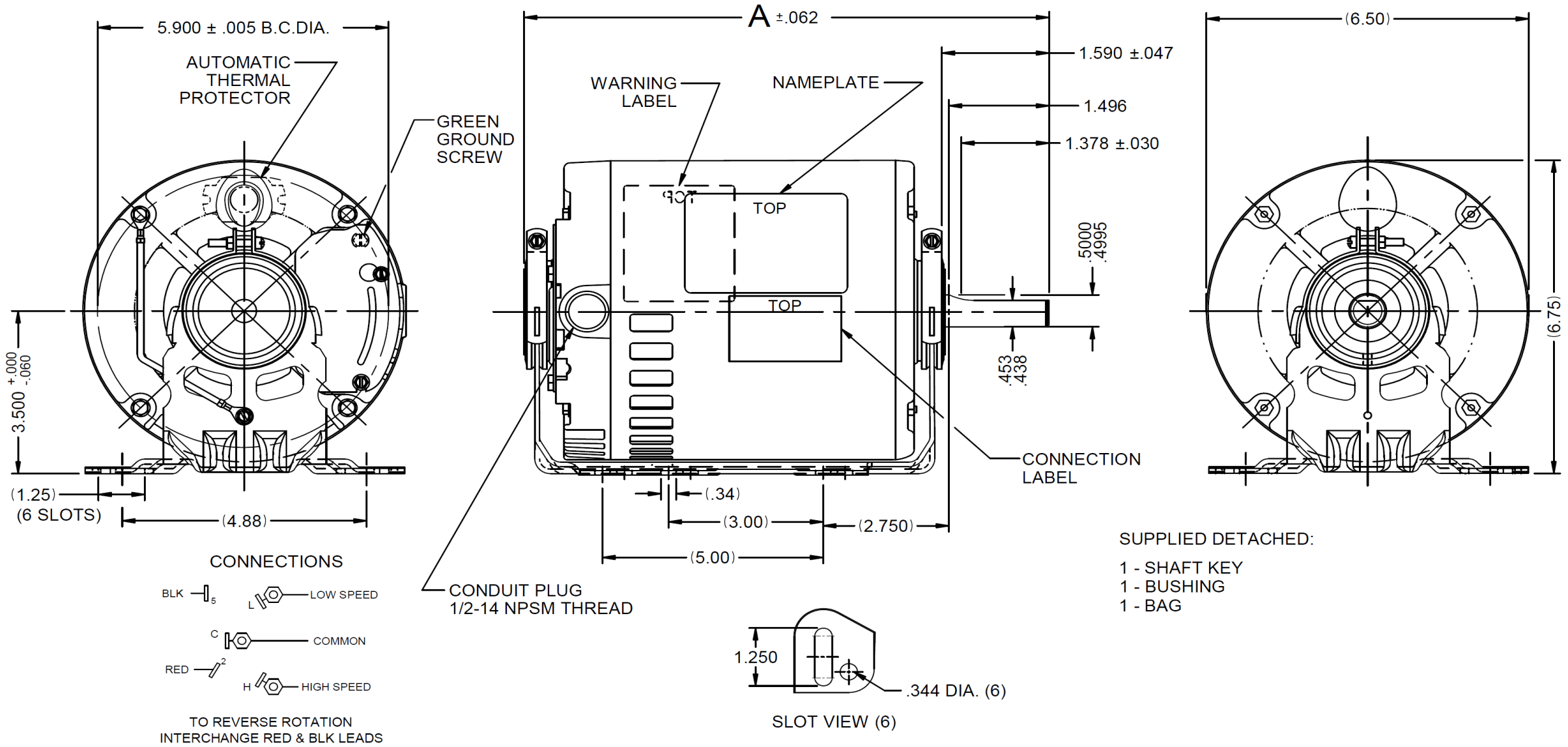


Dimensional Drawing



6K426BG REV. -

VAR	MODEL	CUST. PT. NO.	A	B	C	D	HP	VOLTS	SF	AMPS	HZ	RPM	CONN VOLTS	PROT.	DESCRIPTION / REMARKS
001	S63CXJZS-8189	6K426BG	10.957	-----	-----	-----	1/3 / 1/6	115	1.35	6.1/3.8	60	1725/1140	---	AUTO	56Z, ODP, RESILIENT BASE



DRAWING NO. PAGE 1 of 1 REV. -
6K426BG

Dayton Electric Mfg. Co. Lake Forest, IL 60045 USA

©2019 W.W. Grainger, Inc. This design may not be reproduced, modified or redistributed without written permission from W.W. Grainger, Inc.

Performance Data



6K426BG

REV.
-

MOTOR PERFORMANCE

HP:	1/3 / 1/6HP						
Poles:	4P / 6P						
No. of Speeds:	2spd	Hi Spd	Low Spd				
Volts:	115	115	115				
HZ:	60	60	60				
Service Factor:	1.35						
Efficiency:	@ Rated Load	12.8	51.9				
Power Factor:	@ Rated Load	85.7	54.2				
Amps:	@ No Load						
	@ Rated Load	19.7	3.9				
	@ Service Factor	20.1	4.3				
	@ Locked Rotor	34.1	N/A				
RPM:	@ Rated Load	1728	1148				
Ambient (°C):	40						
Torques:	Breakdown	52.2	26.4				
	Locked Rotor	20.5	N/A				
	Pull-Up	18.5	N/A				
	Rated Load	16.2	12.2				
	Service Factor	21.9	16.5				
Watts:	Rated Load	1945	240				
KVA Code:							
Temperature Rise:	@ Rated Load	31.7	32.1				
	@ Service Factor	38	40.5				
Thermal Protector:	Trip Temp (°C)	139.4	156.5				
Winding Material:	Start (Auxiliary)					Cu	
	Run (Main)					Cu	
Capacitor(s):	Start (MFD / Volts)					N/A	
	No. of Start Capacitors						
	Run (MFD / Volts)					N/A	
	No. of Run Capacitors						

PERFORMANCE DATA:

HP:							
Poles:							
Volts:							
HZ:							
Efficiency:	@ Rated Load						
Power Factor:	@ Rated Load						
Amps:	@ No Load						
	@ Rated Load						
	@ Service Factor						
	@ Locked Rotor						
Torques:	@ Rated Load						
	Locked Rotor						
	Pull-Up						
	Rated Load						
	Service Factor						
Watts:	@ Rated Load						
Temperature Rise:	@ Rated Load						
	@ Service Factor						

DRAWING NO. PAGE 1 REV.
6K426BG -

Performance Data



6K426BG REV.
-

Dayton Manufacturing Company

Motor Description

Model: S063JZS818901 6K426BG
 Motor ID: 1
 Poles: 4/6
 Volts: 115
 Frequency: 60
 HP: 0.33/0.166
 Speed: 1725/1140
 Phase: 1
 Protector: AUTO

Test Conditions

Test Type: Start Run Cap: 0
 Test Number: 2 Start Cap: 0
 Poles: 4 Environment: 23.7 Deg C 61 % RH 964 hPa
 Volts: 115 Tested: 4/20/2016 12:11:07 PM
 Hz: 60 Tested By: Navarro, Susana
 Rotation: CCWLE Gear Ratio: 1:1
 Special Cond: Bearing Friction: -0.43 Oz-Ft
 Speed Conn: Windage Torque: -1.15 Oz-Ft
 TestBoard: CMD InLine Three Phase #2 Fixture #1

Special Points	Vline (V)	Vcap (V)	Iline (A)	Imain (A)	Iaux (A)	Watts	RPM	Tq (Oz-ft)	HP	Eff (%)	PF (%)
	115.0	2.6	34.10	22.50	12.858	3226	32	20.48	0.008	0.2	82.3
	115.0	2.6	33.99	22.47	12.742	3215	85	20.14	0.020	0.5	82.3
	115.0	2.6	33.90	22.48	12.602	3207	141	21.30	0.036	0.8	82.3
	115.0	2.6	33.69	22.43	12.345	3189	249	23.07	0.068	1.6	82.3
	115.0	2.6	33.45	22.35	12.100	3170	348	25.37	0.105	2.5	82.4
	115.0	2.6	33.17	22.26	11.839	3147	444	27.92	0.147	3.5	82.5
	115.0	2.6	32.76	22.13	11.434	3109	551	31.77	0.208	5.0	82.5
	115.0	2.6	32.47	22.02	11.164	3084	619	29.86	0.220	5.3	82.6
	115.0	2.6	32.29	21.88	11.007	3076	698	30.88	0.256	6.2	82.8
	115.0	2.6	32.00	21.65	10.848	3062	780	33.07	0.307	7.5	83.2
	115.0	2.6	31.66	21.38	10.695	3042	852	35.35	0.359	8.8	83.5
	115.0	2.6	31.31	21.11	10.542	3019	917	37.12	0.405	10.0	83.8
	115.0	2.6	30.86	20.75	10.366	2989	993	39.71	0.469	11.7	84.2
	115.0	2.6	30.43	20.40	10.217	2959	1058	41.99	0.529	13.3	84.6
	115.0	2.6	29.99	20.05	10.081	2927	1114	43.25	0.574	14.6	84.9
	115.0	2.6	29.48	19.61	9.951	2890	1175	45.31	0.634	16.4	85.2
	115.0	2.6	28.99	19.19	9.845	2851	1228	46.68	0.682	17.8	85.5
	115.0	2.6	28.45	18.73	9.760	2809	1278	47.18	0.718	19.1	85.9
	115.0	2.6	27.87	18.21	9.692	2762	1328	48.39	0.765	20.7	86.2
	115.0	2.6	27.32	17.71	9.659	2716	1370	48.43	0.790	21.7	86.4
	115.0	2.6	26.71	17.15	9.646	2664	1414	48.26	0.812	22.7	86.7
	115.0	2.6	26.11	16.58	9.666	2610	1452	47.55	0.822	23.5	86.9
	115.0	2.6	25.49	15.98	9.714	2555	1489	46.65	0.827	24.1	87.2
	115.0	2.6	24.90	15.42	9.778	2500	1521	45.09	0.816	24.4	87.3
	115.0	2.6	24.23	14.75	9.879	2435	1553	43.10	0.797	24.4	87.4
	115.0	2.6	23.60	14.10	9.995	2372	1583	40.52	0.763	24.0	87.4
	115.0	2.6	23.01	13.50	10.122	2313	1608	38.05	0.728	23.5	87.4
	115.0	2.6	22.40	12.85	10.265	2250	1632	34.52	0.671	22.2	87.4
	115.0	2.6	21.81	12.17	10.452	2186	1655	31.30	0.617	21.0	87.2
	115.0	2.6	21.30	11.62	10.596	2132	1674	27.46	0.547	19.1	87.0
	115.0	2.6	20.73	10.95	10.781	2067	1693	24.28	0.489	17.7	86.7
	115.0	2.6	20.29	10.45	10.914	2017	1708	19.91	0.405	15.0	86.4
	115.0	2.6	19.82	9.87	11.082	1960	1723	16.52	0.339	12.9	86.0
	115.0	2.6	19.37	9.31	11.219	1902	1736	14.81	0.306	12.0	85.4
	115.0	2.6	19.00	8.86	11.331	1860	1747	10.53	0.219	8.8	85.1
	115.0	2.6	18.67	8.46	11.425	1820	1757	6.26	0.131	5.4	84.8
	115.0	2.6	18.27	8.00	11.463	1771	1766	3.76	0.079	3.3	84.3
	115.0	2.6	17.99	7.68	11.505	1736	1774	1.51	0.032	1.4	83.9
	115.0	2.6	17.83	7.46	11.542	1715	1778	0.00	0.000	0.0	83.6

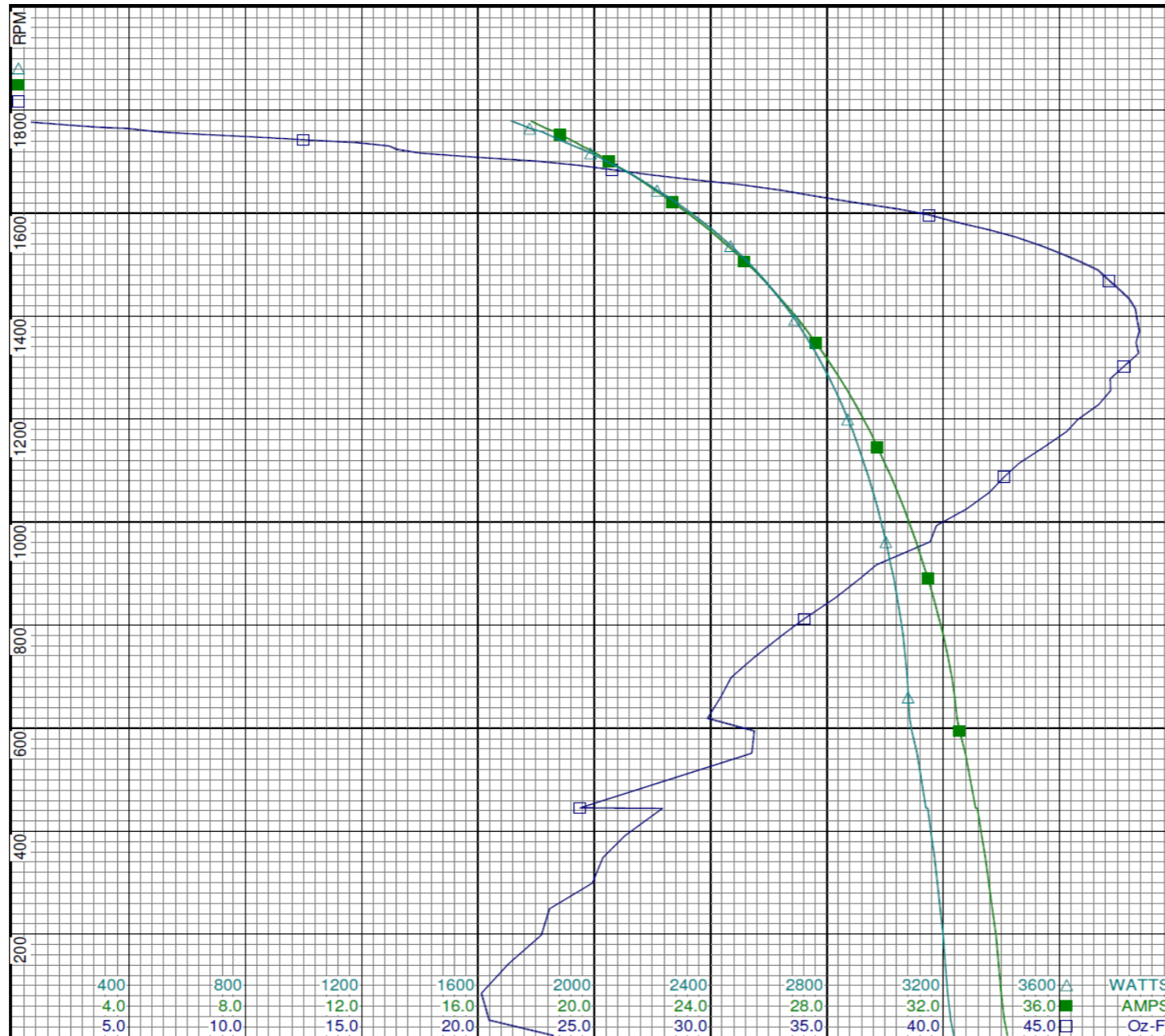
DRAWING NO. PAGE 1 of 8 REV.
6K426BG -

Dayton Electric Mfg. Co. Lake Forest, IL 60045 USA

Performance Data



6K426BG REV. -



Dayton

Curve Descriptions:
 Motor(1) Test 2 Start 115V 60 Hz 4P
 CCWLE

- SPEED vs TORQUE
- SPEED vs ILine
- △ SPEED vs WATTS

Motor Ratings:
 (1) S063JZS818901 ID:1
 6K426BG

DRAWING NO.	PAGE 2 of 8	REV.
	6K426BG	-

Dayton Electric Mfg. Co. Lake Forest, IL 60045 USA

Performance Data



6K426BG	REV. -
----------------	-----------

Dayton Manufacturing Company

Motor Description

Model: S063CXJZM818301
 Motor ID: 1
 Poles: 4/6
 Volts: 60
 Frequency: 60
 HP: 0.33/0.166
 Speed: 1725/1140
 Phase: 1
 Protector: CEJ40HX

Test Conditions

Test Type: Run
 Test Number: 4
 Poles: 4
 Volts: 115
 Hz: 60
 Rotation: CCWLE
 Special Cond:
 Speed Conn:
 TestBoard: CMD InLine Three Phase #2 Fixture #1
 Run Cap: 0
 Start Cap: 0µfd
 Environment: 23.4 Deg C 48 % RH 970 hPa
 Tested: 5/4/2016 10:42:41 AM
 Tested By: Navarro, Susana
 Gear Ratio: 1:1
 Bearing Friction: -0.57 Oz-Ft
 Windage Torque: -1.71 Oz-Ft

Special Points	Vline (V)	Vcap (V)	Iline (A)	Watts	RPM	Tq (Oz-ft)	HP	Eff (%)	PF (%)
	115.0	2.5	5.19	138	1791	0.00	0.000	0.0	23.1
	115.0	2.5	5.19	158	1787	1.31	0.028	13.2	26.5
	115.0	2.5	5.23	211	1780	4.65	0.099	34.8	35.1
	115.0	2.5	5.42	273	1770	8.47	0.179	48.9	43.7
	115.0	2.5	5.70	345	1759	13.17	0.276	59.6	52.7
0.33 HP	115.0	2.5	5.99	401	1749	15.85	0.330	61.4	58.2
	115.0	2.5	6.19	440	1743	17.44	0.362	61.3	61.9
0.445 HP	115.0	2.5	6.79	529	1727	21.65	0.445	62.7	67.8
	115.0	2.5	7.09	569	1720	23.63	0.484	63.5	69.8
	115.0	2.5	7.76	658	1702	27.79	0.563	63.8	73.7
	115.0	2.5	8.83	783	1676	33.07	0.660	62.8	77.1
	115.0	2.5	9.98	908	1646	36.70	0.719	59.1	79.1
	115.0	2.5	11.25	1037	1610	40.41	0.775	55.8	80.1
	115.0	2.5	12.60	1165	1569	42.77	0.799	51.1	80.4
	115.0	2.5	13.85	1275	1524	44.12	0.800	46.9	80.0
BDT OZ-FT	115.0	2.5	14.67	1343	1491	44.24	0.785	43.6	79.6
	115.0	2.5	15.08	1375	1473	44.02	0.772	41.9	79.3
	115.0	2.5	16.24	1463	1416	43.05	0.726	37.0	78.4
	115.0	2.5	17.27	1534	1355	41.24	0.665	32.3	77.2
	115.0	2.5	18.25	1596	1285	38.55	0.590	27.6	76.0
	115.0	2.5	19.13	1645	1208	35.14	0.505	22.9	74.8
	115.0	2.5	19.91	1683	1122	31.46	0.420	18.6	73.5
	115.0	2.5	20.56	1712	1033	27.43	0.337	14.7	72.4
	115.0	2.5	21.13	1734	933	23.14	0.257	11.1	71.3
	115.0	2.5	21.64	1749	820	18.86	0.184	7.9	70.3
	115.0	2.5	22.03	1756	710	14.49	0.122	5.2	69.3
	115.0	2.6	34.45	3256	558	33.38	0.222	5.1	82.2
	115.0	2.6	34.38	3249	443	33.62	0.177	4.1	82.2
	115.0	2.6	34.33	3240	298	30.03	0.107	2.5	82.1
	115.0	2.6	34.21	3224	144	26.71	0.046	1.1	81.9

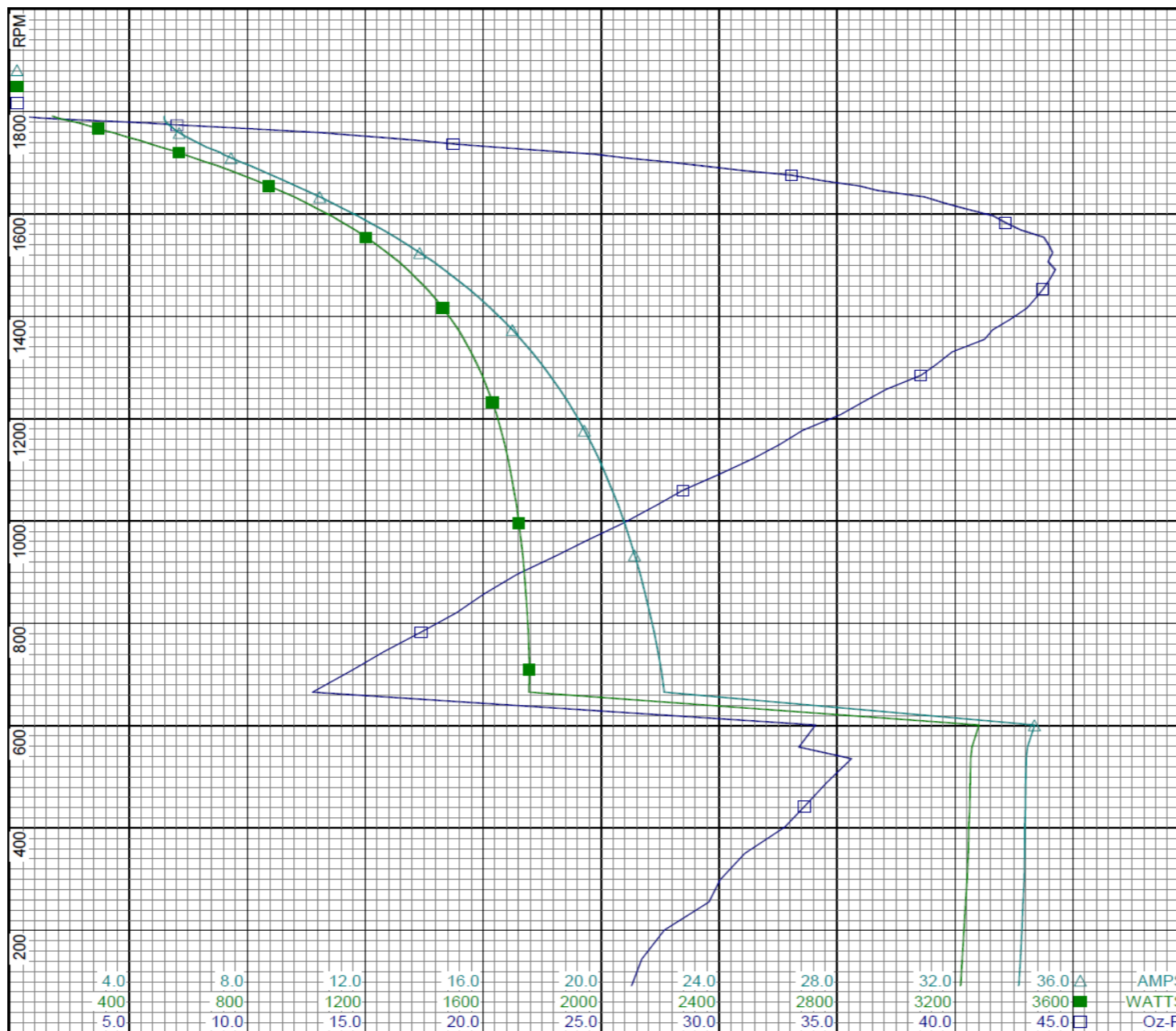
DRAWING NO.	PAGE 3 of 8	REV.
	6K426BG	-

Dayton Electric Mfg. Co. Lake Forest, IL 60045 USA

Performance Data



6K426BG REV. -



Curve Descriptions:
 Motor(1) Test 4 Run 115V 60 Hz 4P
 CCWLE
 □ SPEED vs TORQUE
 ■ SPEED vs WATTS
 △ SPEED vs ILine

Motor Ratings:
 (1) S063CXJZM818301 ID: 1

DRAWING NO. PAGE 4 of 8 REV.
 6K426BG -

Dayton Electric Mfg. Co. Lake Forest, IL 60045 USA

Performance Data



6K426BG	REV. -
----------------	-----------

Dayton Manufacturing Company

Motor Description

Model: S063CXJZM818301
 Motor ID: 1
 Poles: 4/6
 Volts: 60
 Frequency: 60
 HP: 0.33/0.166
 Speed: 1725/1140
 Phase: 1
 Protector: CEJ40HX

Test Conditions

Test Type: Start
 Test Number: 9
 Poles: 6
 Volts: 115
 Hz: 60
 Rotation: CCWLE
 Special Cond:
 Speed Conn:
 TestBoard: CMD InLine Three Phase #2 Fixture #1
 Environment: 23.3 Deg C 59 % RH 963 hPa
 Tested: 4/20/2016 1:11:05 PM
 Tested By: Navarro, Susana
 Bearing Friction: -0.41 Oz-Ft
 Windage Torque: -1.35 Oz-Ft

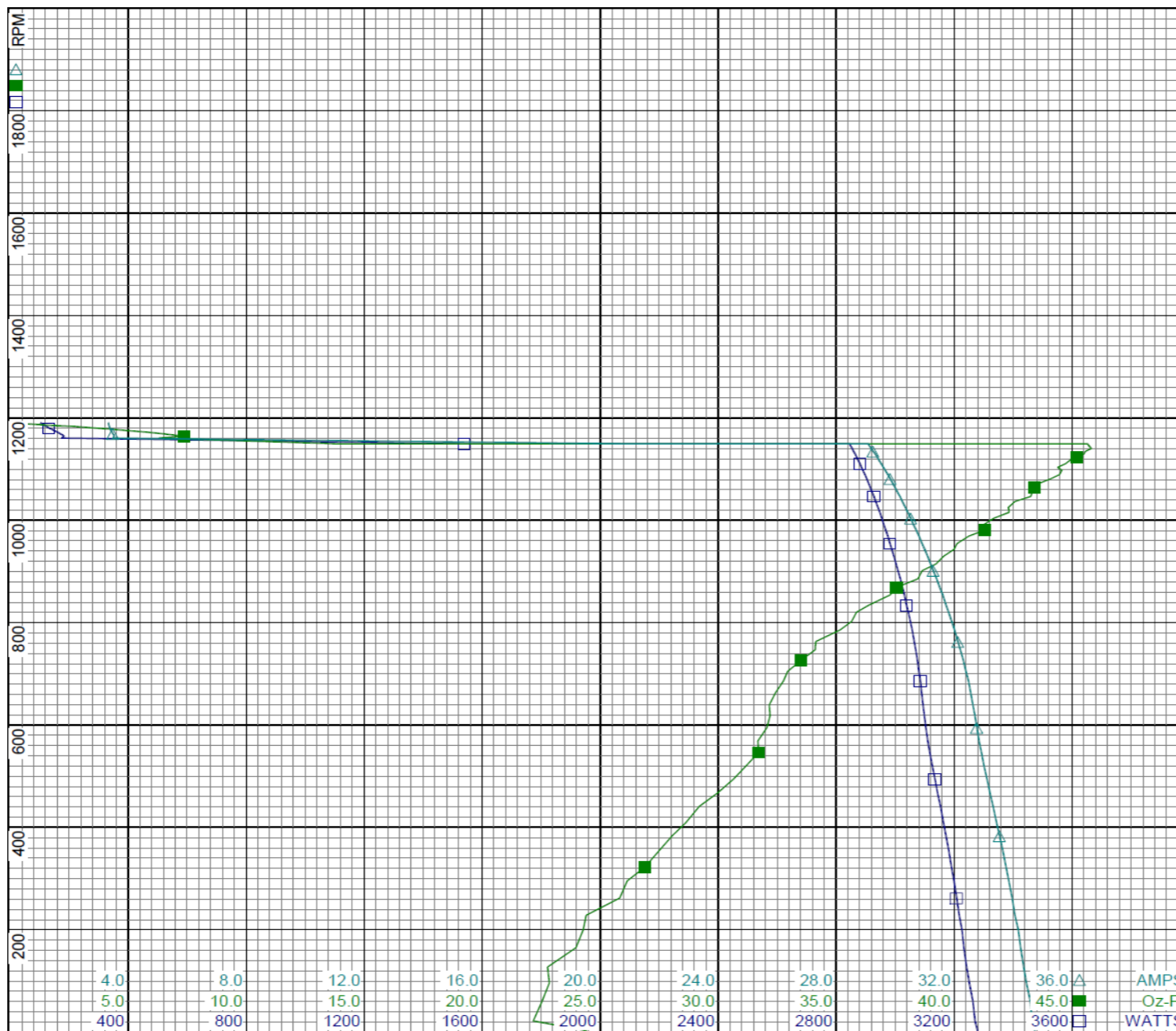
Special Points	Vline (V)	Vcap (V)	Iline (A)	Watts	RPM	Tq (Oz-ft)	HP	Eff (%)	PF (%)
PUT OZ-FT	115.0	2.4	34.63	3270	22	22.16	0.006	0.1	82.1
	115.0	2.4	34.63	3270	22	22.16	0.006	0.1	82.1
	115.0	2.4	34.35	3241	127	22.76	0.034	0.8	82.1
	115.0	2.4	34.06	3216	228	24.40	0.066	1.5	82.1
	115.0	2.4	33.75	3190	322	26.89	0.103	2.4	82.2
	115.0	2.4	33.43	3163	408	28.61	0.139	3.3	82.3
	115.0	2.4	33.11	3134	494	30.65	0.180	4.3	82.3
	115.0	2.4	32.84	3110	568	31.67	0.214	5.1	82.4
	115.0	2.4	32.63	3094	639	32.15	0.245	5.9	82.5
	115.0	2.4	32.39	3080	704	32.93	0.276	6.7	82.7
	115.0	2.4	32.12	3064	763	34.12	0.310	7.5	82.9
	115.0	2.5	31.80	3044	820	35.85	0.350	8.6	83.2
	115.0	2.5	31.50	3024	869	37.57	0.389	9.6	83.5
	115.0	2.5	31.20	3003	914	39.21	0.427	10.6	83.7
	115.0	2.5	30.90	2982	954	40.12	0.456	11.4	83.9
	115.0	2.5	30.61	2961	992	41.26	0.487	12.3	84.1
	115.0	2.5	30.34	2941	1025	42.29	0.516	13.1	84.3
	115.0	2.5	30.08	2922	1054	43.29	0.543	13.9	84.5
	115.0	2.5	29.83	2903	1081	44.08	0.567	14.6	84.6
	115.0	2.5	29.59	2885	1103	44.39	0.583	15.1	84.8
	115.0	2.6	29.38	2869	1123	45.20	0.604	15.7	84.9
	115.0	2.6	29.19	2854	1140	45.81	0.622	16.2	85.0
	115.0	2.6	20.86	1538	1149	13.83	0.189	9.2	64.1
	115.0	2.6	3.52	180	1166	7.06	0.098	40.7	44.4
	115.0	2.6	3.41	147	1175	4.91	0.069	34.8	37.6
	115.0	2.6	3.36	124	1183	2.76	0.039	23.4	32.0
	115.0	2.6	3.33	106	1188	0.54	0.008	5.4	27.8
	115.0	2.6	3.32	102	1190	0.00	0.000	0.0	26.7

DRAWING NO.	PAGE 5 of 8	REV.
	6K426BG	-

Performance Data



6K426BG REV. -



Dayton

Curve Descriptions:
 Motor(1) Test 9 Start 115V 60 Hz 6P
 CCWLE

- SPEED vs WATTS
- SPEED vs TORQUE
- △ SPEED vs ILine

Motor Ratings:
 (1) S063CXJZM818301 ID: 1

DRAWING NO. PAGE 6 of 8 REV.
6K426BG -

Dayton Electric Mfg. Co. Lake Forest, IL 60045 USA

Performance Data



6K426BG REV.
-

Dayton Manufacturing Company

Motor Description

Model: S063CXJZM818301
 Motor ID: 1
 Poles: 4/6
 Volts: 60
 Frequency: 60
 HP: 0.33/0.166
 Speed: 1725/1140
 Phase: 1
 Protector: CEJ40HX

Test Conditions

Test Type: Run Run Cap: 0
 Test Number: 11 Start Cap: 0µfd
 Poles: 6 Environment: 23.4 Deg C 48 % RH 970 hPa
 Volts: 115 Tested: 5/4/2016 10:48:29 AM
 Hz: 60 Tested By: Navarro, Susana
 Rotation: CCWLE Gear Ratio: 1:1
 Special Cond: Bearing Friction: -0.51 Oz-Ft
 Speed Conn: Windage Torque: -1.15 Oz-Ft
 TestBoard: CMD InLine Three Phase #2 Fixture #1

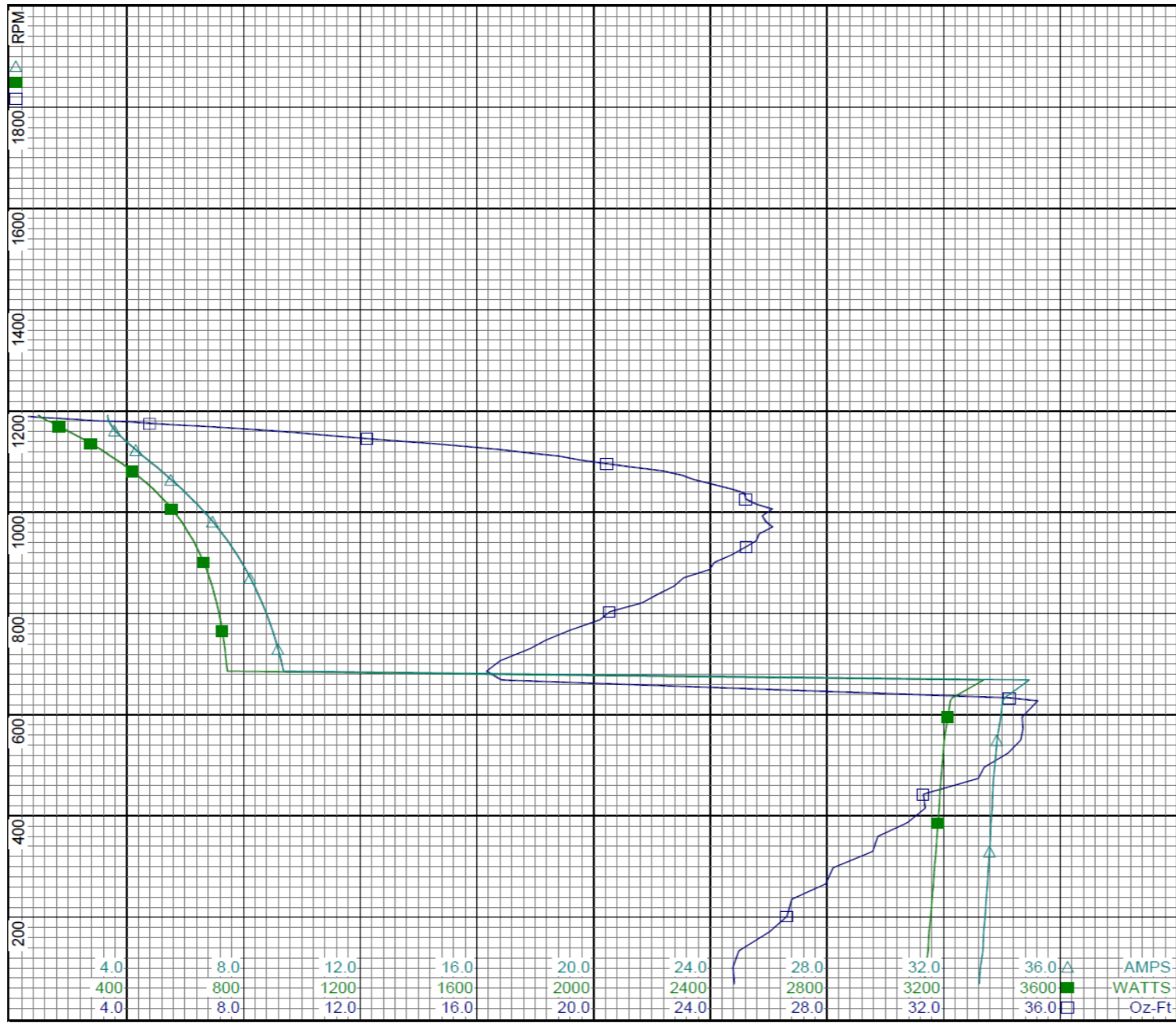
Special Points	Vline (V)	Vaux (V)	Vcap (V)	Iline (A)	Watts	RPM	Tq (Oz-ft)	HP	Eff (%)	PF (%)
	115.0	2.2	3.1	3.34	95	1191	0.00	0.000	0.0	24.8
	115.0	2.2	3.1	3.34	107	1187	1.04	0.015	10.3	27.8
	115.0	2.2	3.1	3.37	127	1180	2.92	0.041	24.2	32.7
	115.0	2.2	3.1	3.45	159	1172	5.65	0.079	37.1	39.9
	115.0	2.2	3.1	3.58	192	1162	8.67	0.120	46.6	46.6
	115.0	2.2	3.1	3.79	234	1149	11.38	0.156	49.6	53.7
0.166 HP	115.0	2.2	3.1	3.87	246	1145	12.18	0.166	50.3	55.4
	115.0	2.3	3.1	4.06	277	1135	14.50	0.196	52.8	59.3
0.225 HP	115.0	2.3	3.1	4.30	312	1123	16.83	0.225	53.8	63.0
	115.0	2.3	3.1	4.44	329	1117	17.83	0.237	53.7	64.6
	115.0	2.3	3.1	4.87	383	1096	20.45	0.267	51.9	68.4
	115.0	2.3	3.1	5.35	436	1073	23.02	0.294	50.4	70.8
	115.0	2.3	3.1	5.88	490	1046	24.70	0.308	46.8	72.5
	115.0	2.3	3.0	6.41	541	1016	25.58	0.309	42.7	73.3
	115.0	2.3	3.0	6.94	587	982	25.89	0.303	38.5	73.5
BDT OZ-FT	115.0	2.3	3.0	7.09	599	971	26.13	0.302	37.6	73.4
	115.0	2.3	3.0	7.45	628	943	25.57	0.287	34.1	73.2
	115.0	2.3	3.0	7.93	663	901	24.14	0.259	29.1	72.6
	115.0	2.3	3.0	8.37	692	854	22.75	0.231	24.9	71.9
	115.0	2.3	3.0	8.76	715	803	20.54	0.196	20.5	70.9
	115.0	2.3	3.0	9.09	732	747	18.34	0.163	16.6	70.0
	115.0	2.3	3.0	9.37	744	686	16.33	0.133	13.4	69.1
	115.0	2.4	3.1	34.01	3222	627	35.22	0.263	6.1	82.4
	115.0	2.4	3.1	33.82	3201	550	34.64	0.227	5.3	82.3
	115.0	2.4	3.1	33.70	3190	474	33.18	0.187	4.4	82.3
	115.0	2.4	3.1	33.61	3179	386	30.74	0.141	3.3	82.3
	115.0	2.4	3.1	33.52	3168	297	28.20	0.100	2.4	82.2
	115.0	2.4	3.1	33.41	3155	201	26.62	0.064	1.5	82.1
	115.0	2.4	3.1	33.25	3138	101	24.77	0.030	0.7	82.1

DRAWING NO. PAGE 7 of 8 REV.
 6K426BG -

Performance Data



6K426BG REV. -



Curve Descriptions:
 Motor(1) Test 11 Run 115V 60 Hz 6P
 CCWLE

- SPEED vs TORQUE
- SPEED vs WATTS
- △ SPEED vs ILine

Motor Ratings:
 (1) S063CXJZM818301 ID: 1

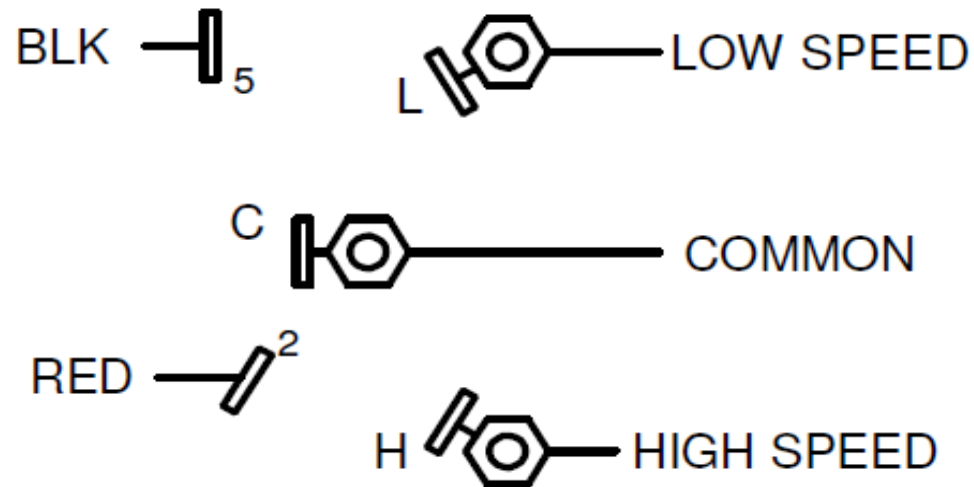
DRAWING NO.	PAGE 8 of 8	REV.
6K426BG		-

Dayton Electric Mfg. Co. Lake Forest, IL 60045 USA

6K426BG

REV.
-

CONNECTIONS



TO REVERSE ROTATION
INTERCHANGE RED & BLK LEADS

DRAWING NO.	PAGE 1 of 1	REV.
6K426BG		-

Dayton®**BELT DRIVE FAN &
BLOWER MOTOR**

HP: 1/3 / 1/6

VOLTS: 115

AMPS: 6.1/3.8

RPM: 1725/1140

DUTY: CONT

SF: 1.35

KVA CODE: P

ENCL: ODP

THERMALLY PROTECTED: AUTO

MFG. NO. PROT. CODE: 00J30

MTR REF: S63CXJZS-8189

Part
No 6K426BG

PH: 1

HZ: 60

FR: 56Z

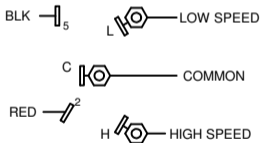
INS CL: B

AMB: 40 °C

SFA: 6.8/4.3

AVG. F.L.
EFF.Disconnect Power Before Making Any
Electrical Connections or Changes

CONNECTIONS

TO REVERSE ROTATION
INTERCHANGE RED & BLK LEADS

E37403



258501

Mfd for Dayton Electric Mfg. Co., Lake Forest, IL 60045 USA

MADE IN MEXICO