

Dimensional Drawing



6K403BG

REV.
-

VAR	MODEL	CUST. PT. NO.	A	B	C	D	HP	VOLTS	SF	AMPS	HZ	RPM	CONN VOLTS	PROT.	DESCRIPTION / REMARKS
001	S55JXGWH-8493	6K403BG	9.48	-----	-----	-----	1/4	115	1.0	4.9	60	1725	---	AUTO	48YZ, OAO

The drawing includes three main views of the motor assembly:

- Front View (Left):** Shows the motor's circular face with a central hub and radial cooling fins. Dimensions include a total width of 5.625, a bore diameter of 5.125 B.C. DIA., and a central hole diameter of 3.625. The overall height is 8.250. Labels include "AUTOMATIC THERMAL PROTECTOR" and "SEAM WELD".
- Side View (Center):** Shows the motor's profile with mounting feet. Key dimensions include a total width of $A \pm .060$, a mounting foot width of 1.250, and a base height of 1.250. Labels include "1/2-14 N.P.S.C. THR'D CONDUIT PLUG", "NAMEPLATE", "TOP", "STARTING SWITCH END", and ".438±.010 DIA. HOLE".
- End View (Right):** Shows the motor's circular end with cooling fins. Dimensions include a diameter of 5.125 DIA REF and a 45°±2°30' angle. Labels include "WATER SLINGER", "WARNING LABEL", and "CENTERLINE OF MOTOR SUPPORT".

Connections: A legend shows two terminal blocks. The first block has terminals 1 and 2, with "RED" lead at 2 and "BLACK" lead at 1. The second block has terminals 4 and 5, with "RED" lead at 4 and "BLACK" lead at 5. A note states: "CCW LEAD END REVERSIBLE TO REVERSE ROTATION INTERCHANGE RED & BLACK LEADS".

DRAWING NO.	PAGE 1 of 1	REV.
6K403BG		

Performance Data



6K403BG

REV.
-

SPLIT-PHASE & CAPACITOR START MOTOR PERFORMANCE

HP:	1/4							
Poles:	4							
Ambient (°C):	40							
Altitude (FASL):								
No. of Speeds:	1							
Volts:	115	115						
HZ:	60	60						
Service Factor:	1							
Efficiency:	@ Rated Load	53.7						
Power Factor:	@ Rated Load	65.2						
Amps:	@ No Load							
	@ Rated Load	4.7						
	@ Service Factor	4.7						
	@ Locked Rotor					32		
RPM:	@ Rated Load					1742		
Torques:	Breakdown	28.7						
	Locked Rotor	20.4						
	Pull-Up	19.6						
	Rated Load	12.2						
	Service Factor	12.2						
Watts:	Rated Load	351						
KVA Code:	R	R						
Temperature Rise:	@ Rated Load	OAO						
	@ Service Factor	-						
Thermal Protector:	Trip Temp (°C)	128.1						
Winding Material:	Start (Auxiliary)	Al						
	Run (Main)	Al						
Capacitor(s):	Start (MFD / Volts)					NA		
	No. of Start Capacitors							
	Run (MFD / Volts)					NA		
	No. of Run Capacitors							
LOW SPEED PERFORMANCE DATA:								
HP:								
Poles:								
Volts:								
HZ:								
Efficiency:	@ Rated Load							
Power Factor:	@ Rated Load							
Amps:	@ No Load							
	@ Rated Load							
	@ Service Factor							
	@ Locked Rotor							
Torques:	BreakDown							
	Locked Rotor							
	Pull-Up							
	Rated Load							
	Service Factor							
Watts:	@ Rated Load							
Temperature Rise:	@ Rated Load							
	@ Service Factor							

DRAWING NO. PAGE 1 of 1
6K403BG

REV.
-

Dayton Electric Mfg. Co. Lake Forest, IL 60045 USA

Performance Data



6K403BG		REV. -								
Dayton Manufacturing Company										
Motor Description					Test Conditions					
Model:		S055GWH8493 6K403BG		Test Type:		Start		Run Cap:		0
Motor ID:		1		Test Number:		3		Start Cap:		0µfd
Poles:		4		Poles:		4		Environment:		20.6 Deg C 52 % RH 993 hPa
Volts:		115		Volts:		115		Tested:		8/15/2012 1:54:40 PM
Frequency:		60		Hz:		60		Tested By:		Sharp, Gerald
HP:		1/4		Rotation:				Gear Ratio:		1:1
Speed:		1725		Special Cond:				Bearing Friction:		-0.62 Oz-Ft
Phase:		1		Speed Conn:				Windage Torque:		-2.24 Oz-Ft
Protector:		CEJ64CY		TestBoard:		Amps Performance Fixture #4				
Special Points		Vline(V)	Iline(A)	Imain(A)	Iaux(A)	Watts	RPM	Tq(Oz-ft)	HP	Eff(%)
		115.0	32.04	16.964	15.851	3217	26	20.36	0.006	0.1
PUT	OZ-FT	115.0	31.98	16.946	15.817	3209	19	19.61	0.004	0.1
		115.0	31.92	16.954	15.738	3205	32	20.65	0.008	0.2
		115.0	31.82	16.988	15.519	3190	154	19.99	0.037	0.9
		115.0	31.66	16.985	15.255	3180	300	21.79	0.078	1.8
		115.0	31.40	16.905	14.977	3159	440	22.69	0.119	2.8
		115.0	31.11	16.789	14.702	3132	566	24.51	0.165	3.9
		115.0	30.77	16.644	14.435	3108	679	26.54	0.214	5.1
		115.0	30.41	16.464	14.161	3078	784	28.75	0.268	6.5
		115.0	30.00	16.206	13.947	3043	875	29.76	0.310	7.6
		115.0	29.58	15.963	13.711	3010	959	31.30	0.357	8.9
		115.0	29.15	15.700	13.486	2973	1039	32.87	0.407	10.2
		115.0	28.68	15.416	13.260	2933	1112	33.99	0.450	11.4
		115.0	28.19	15.112	13.036	2888	1179	35.02	0.491	12.7
		115.0	27.69	14.796	12.854	2845	1239	35.71	0.527	13.8
		115.0	27.18	14.456	12.683	2796	1295	36.10	0.556	14.8
		115.0	26.66	14.100	12.544	2745	1344	36.17	0.578	15.7
		115.0	26.14	13.735	12.441	2695	1389	35.74	0.591	16.4
		115.0	25.61	13.349	12.369	2643	1432	35.05	0.597	16.9
		115.0	25.10	12.967	12.318	2592	1469	34.20	0.598	17.2
		115.0	24.59	12.575	12.311	2542	1503	32.83	0.587	17.2
		115.0	24.09	12.174	12.335	2489	1535	31.15	0.569	17.1
		115.0	23.60	11.765	12.377	2433	1564	29.30	0.546	16.7
		115.0	23.12	11.387	12.430	2385	1589	27.21	0.515	16.1
		115.0	22.67	10.975	12.525	2334	1614	24.76	0.476	15.2
		115.0	22.21	10.558	12.639	2282	1637	22.22	0.433	14.1
		115.0	21.77	10.139	12.770	2232	1657	19.17	0.378	12.6
		115.0	21.36	9.721	12.910	2181	1678	16.15	0.323	11.0
		115.0	20.97	9.350	13.036	2134	1696	13.41	0.271	9.5
		115.0	20.54	8.976	13.162	2085	1712	10.14	0.207	7.4
		115.0	20.14	8.445	13.405	2030	1731	5.93	0.122	4.5
		115.0	19.73	8.084	13.541	1981	1747	2.16	0.045	1.7
		115.0	19.51	7.755	13.700	1949	1758	0.00	0.000	0.0

DRAWING NO. PAGE 1 of 4

6K403BG

REV.
-

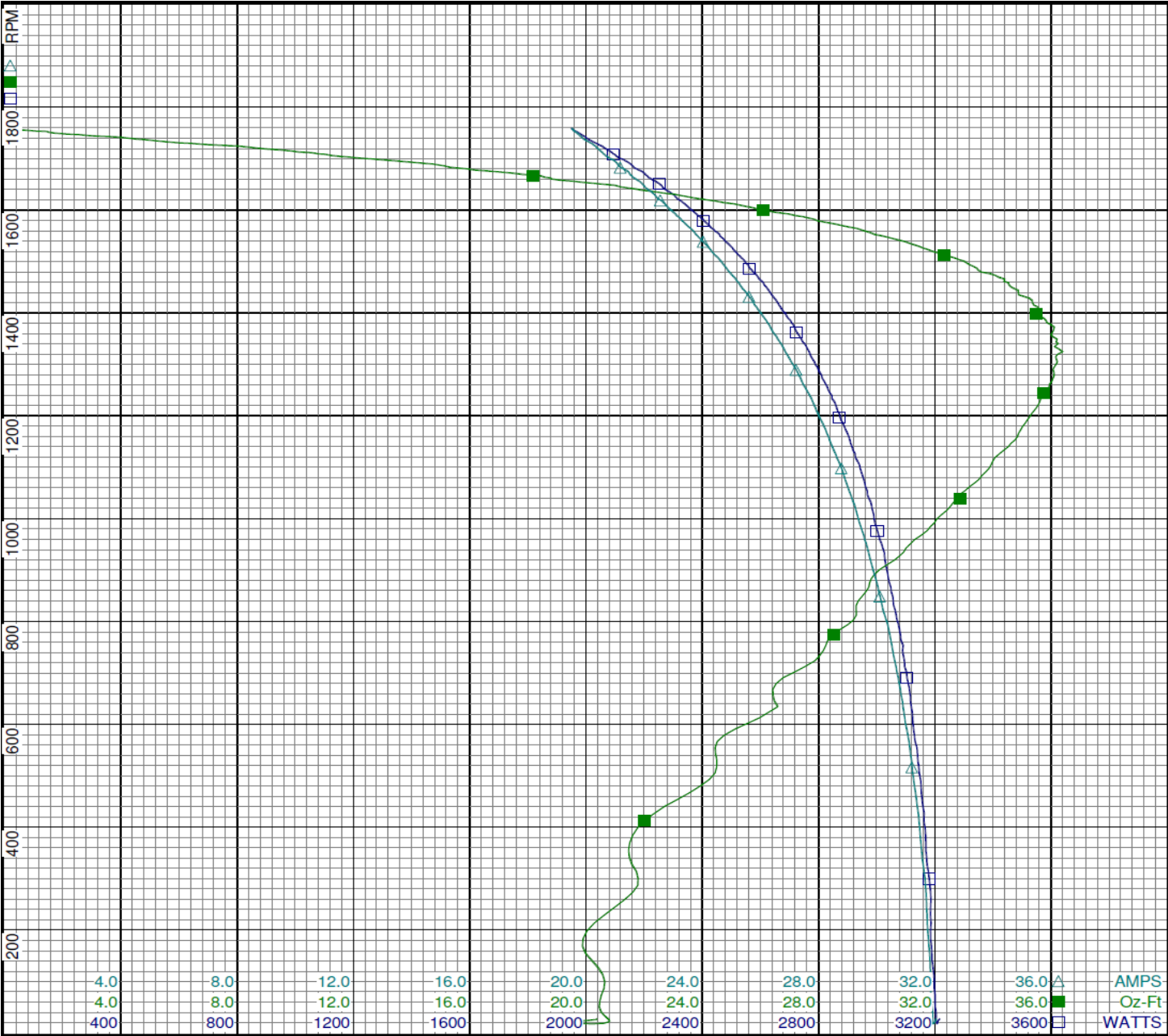
Dayton Electric Mfg. Co. Lake Forest, IL 60045 USA

Performance Data



6K403BG

REV.
-



Curve Descriptions:
Motor(1) Test 3 Start 115V 60 Hz 4P

- SPEED vs WATTS
- SPEED vs TORQUE
- △ SPEED vs ILine

Motor Ratings:
(1) S055GWH8493 6K403BG

Performance Data



6K403BG			REV. -						
Dayton Manufacturing Company									
Motor Description				Test Conditions					
Model:		S055GWH8493 6K403BG		Test Type:		Run		Run Cap: 0	
Motor ID:		1		Test Number:		4		Start Cap: 0µfd	
Poles:		4		Poles:		4		Environment: 20.6 Deg C 52 % RH 993 hPa	
Volts:		115		Volts:		115		Tested: 8/15/2012 1:53:34 PM	
Frequency:		60		Hz:		60		Tested By: Sharp, Gerald	
HP:		1/4		Rotation:				Gear Ratio: 1:1	
Speed:		1725		Special Cond:				Bearing Friction: -0.67 Oz-Ft	
Phase:		1		Speed Conn:				Windage Torque: -2.36 Oz-Ft	
Protector:		CEJ64CY		TestBoard:		Amps Performance		Fixture #4	
Special Points		Vline(V)	Iline(A)	Watts	RPM	Tq(Oz-ft)	HP	Eff (%)	PF (%)
		115.0	3.928	129.0	1789	0.00	0.000	0.0	28.5
		115.0	3.997	199.4	1773	4.34	0.092	34.2	43.4
		115.0	4.214	268.5	1759	8.19	0.171	47.6	55.4
0.25	HP	115.0	4.640	345.1	1743	12.05	0.250	54.0	64.7
		115.0	4.683	350.9	1742	12.17	0.252	53.6	65.2
12.2	OZ-FT	115.0	4.687	351.4	1742	12.20	0.253	53.7	65.2
1725	RPM	115.0	5.064	403.0	1725	14.39	0.295	54.7	69.2
		115.0	5.187	423.9	1719	15.31	0.313	55.1	71.1
16.4	OZ-FT	115.0	5.338	447.9	1713	16.40	0.334	55.7	73.0
		115.0	5.930	525.6	1697	19.49	0.394	55.9	77.1
		115.0	6.677	615.5	1673	22.52	0.448	54.4	80.2
		115.0	7.525	708.0	1644	25.02	0.490	51.6	81.8
		115.0	8.411	799.8	1611	26.97	0.517	48.2	82.7
		115.0	9.262	884.2	1575	28.11	0.527	44.5	83.0
		115.0	10.078	962.1	1536	28.58	0.523	40.5	83.0
BDT	OZ-FT	115.0	10.578	1006.4	1510	28.69	0.516	38.2	82.7
		115.0	10.876	1032.3	1494	28.29	0.503	36.3	82.5
		115.0	11.619	1094.9	1448	27.73	0.478	32.6	81.9
		115.0	12.289	1148.3	1399	26.76	0.446	29.0	81.3
		115.0	12.904	1195.7	1347	25.43	0.408	25.5	80.6
		115.0	13.467	1236.4	1293	23.75	0.366	22.1	79.8
		115.0	13.989	1272.4	1233	21.91	0.322	18.9	79.1
		115.0	14.455	1300.7	1170	19.96	0.278	15.9	78.2
		115.0	14.879	1328.3	1104	18.02	0.237	13.3	77.6
		115.0	15.254	1347.0	1032	15.92	0.196	10.8	76.8
		115.0	15.608	1367.5	953	13.67	0.155	8.5	76.2
		115.0	15.912	1383.9	872	11.77	0.122	6.6	75.6
		115.0	16.185	1395.8	782	9.72	0.091	4.8	75.0
		115.0	16.423	1406.0	687	7.36	0.060	3.2	74.4
		115.0	16.627	1415.4	586	5.22	0.036	1.9	74.0
		115.0	16.776	1420.2	479	3.64	0.021	1.1	73.6
		115.0	16.889	1424.4	364	2.79	0.012	0.6	73.3
		115.0	16.955	1426.3	244	-0.02	0.000	0.0	73.1
		115.0	16.985	1427.8	119	0.70	0.001	0.1	73.1
		115.0	17.000	1428.0	18	0.95	0.000	0.0	73.0

DRAWING NO.

PAGE 3 of 4

6K403BG

REV.
-

DRAWING NO.	PAGE 3 of 4	REV.
	6K403BG	-

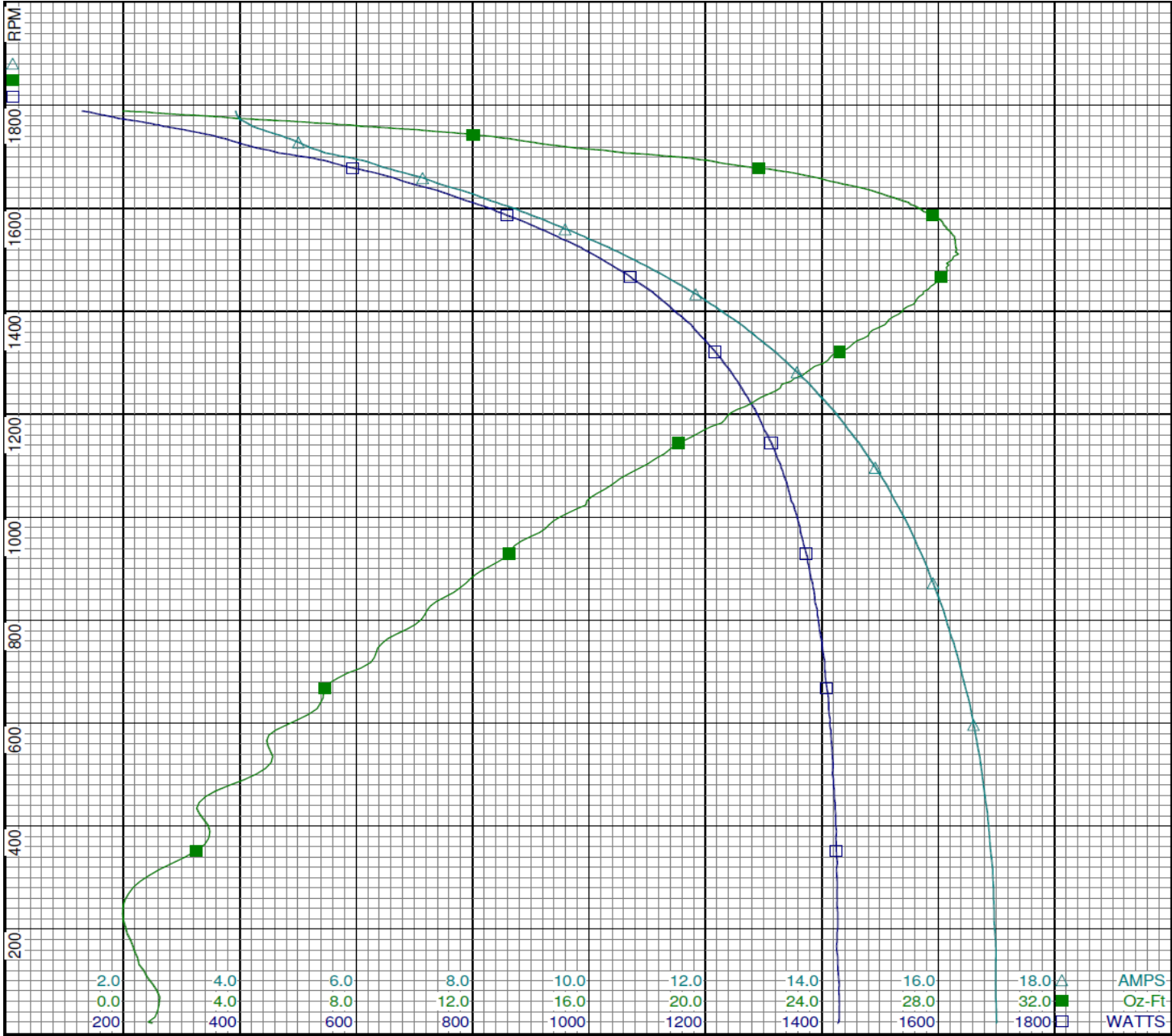
Dayton Electric Mfg. Co. Lake Forest, IL 60045 USA

Performance Data



6K403BG

REV.
-



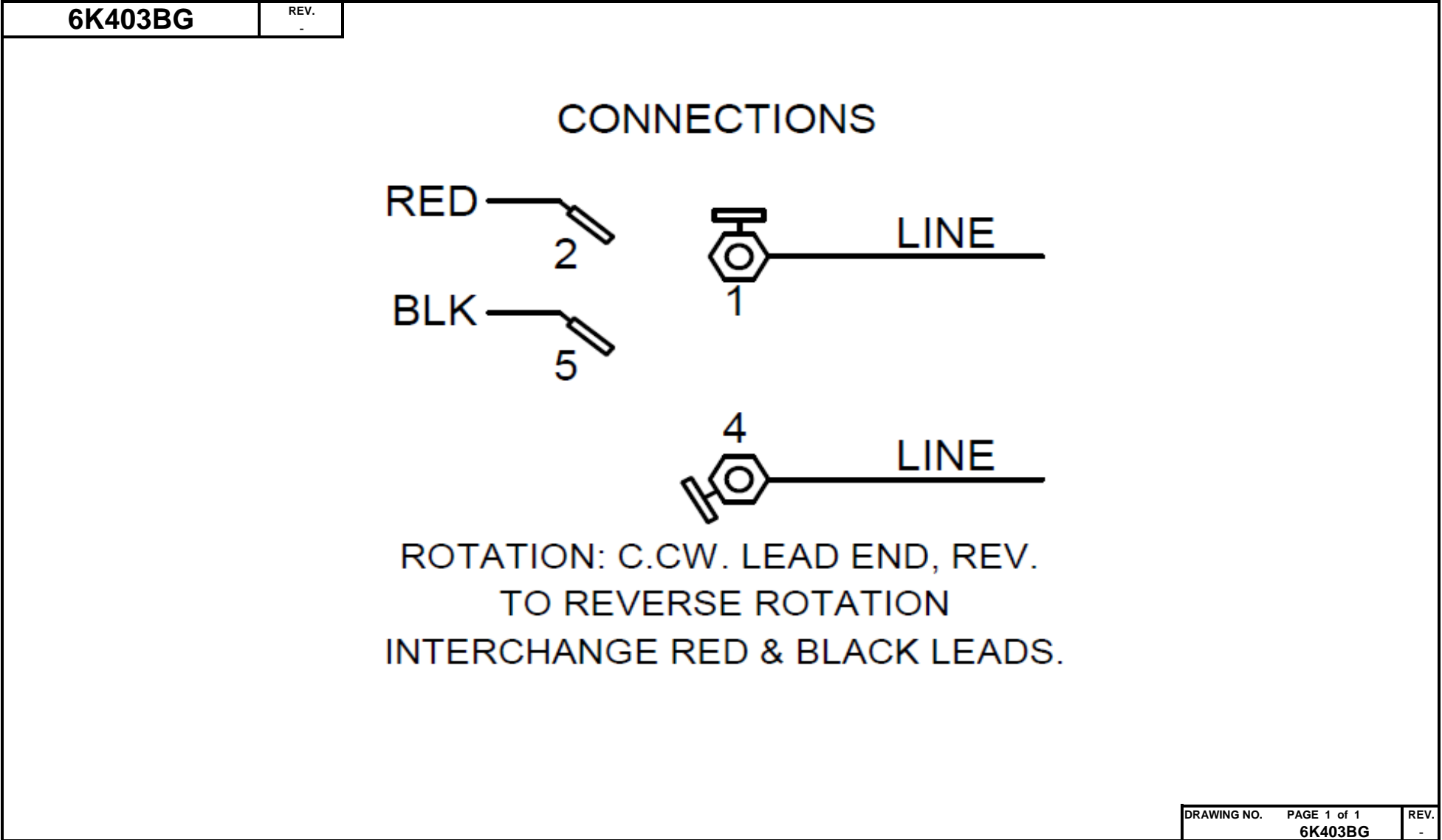
Curve Descriptions:
Motor(1) Test 4 Run 115V 60 Hz 4P

- SPEED vs WATTS
- SPEED vs TORQUE
- △ SPEED vs ILine

Motor Ratings:
(1) S055GWH8493 6K403BG

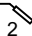
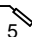

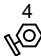
DRAWING NO.	PAGE 4 of 4	REV.
6K403BG		-

Dayton Electric Mfg. Co. Lake Forest, IL 60045 USA



Dayton[®]**PEDESTAL FAN MOTOR****HP:** 1/4**VOLTS:** 115**AMPS:** 4.9**RPM:** 1725**DUTY:** CONT**SF:** 1.0**KVA CODE:** R**ENCL:** OAO**THERMALLY PROTECTED:** AUTOMFG. NO. PROT. CODE:

00310

AVG. F.L.
EFF.**MTR REF:** S55JXGWH-8493Part
No **6K403BG****PH:** 1**HZ:** 60**FR:** 48YZ**INS CL:** B**AMB:** 40 °C**SFA:** 4.9**Disconnect Power Before Making Any
Electrical Connections or Changes****CONNECTIONS**RED —  2BLK —  5 1 — LINE 4 — LINE**ROTATION:** C.CW. LEAD END, REV.
TO REVERSE ROTATION
INTERCHANGE RED & BLACK LEADS.

E37403



258501

Mfd for Dayton Electric Mfg. Co., Lake Forest, IL 60045 USA**Made in Mexico**