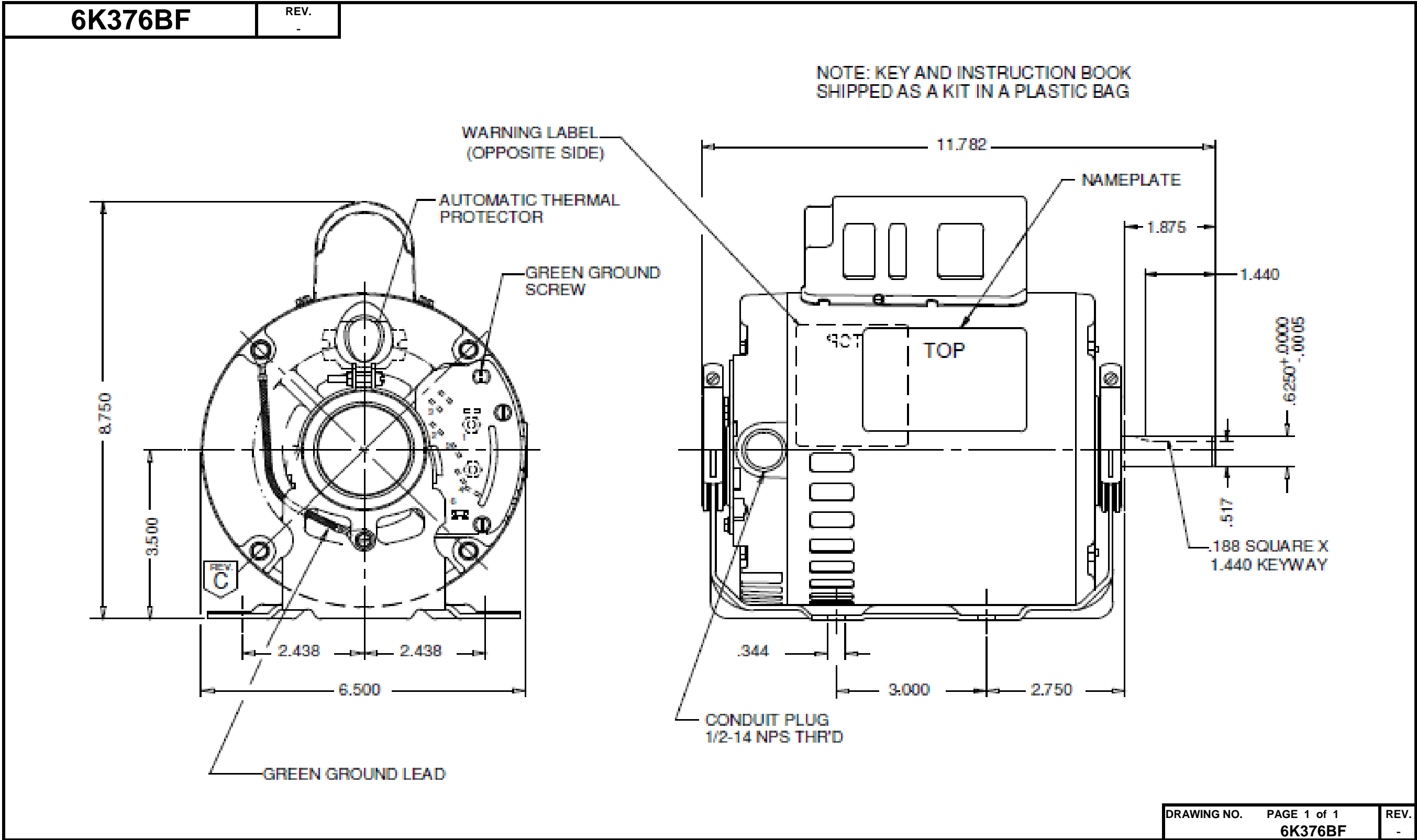


# Dimensional Drawing



Dayton Electric Mfg. Co. Lake Forest, IL 60045 USA

# Performance Data



**6K376BF**

REV.  
-

## MOTOR PERFORMANCE

|                                    |                         |                   |        |        |        |  |  |  |  |
|------------------------------------|-------------------------|-------------------|--------|--------|--------|--|--|--|--|
| <b>HP:</b>                         | 3/4,                    |                   |        |        |        |  |  |  |  |
| <b>Poles:</b>                      | 4                       |                   |        |        |        |  |  |  |  |
| <b>No. of Speeds:</b>              | 1                       |                   |        |        |        |  |  |  |  |
| <b>Volts:</b>                      | 115/230 & 110/220       | 115               | 230    | 110    | 220    |  |  |  |  |
| <b>HZ:</b>                         | 60 & 50                 | 60                | 60     | 50     | 50     |  |  |  |  |
| <b>Service Factor:</b>             | 1.25                    |                   |        |        |        |  |  |  |  |
| <b>Efficiency:</b>                 | @ Rated Load            | 68.3              | 65.71  | 65.5   | 66.2   |  |  |  |  |
| <b>Power Factor:</b>               | @ Rated Load            | 72.4              | 73.7   | 68.8   | 69.2   |  |  |  |  |
| <b>Amps:</b>                       | @ No Load               |                   |        |        |        |  |  |  |  |
|                                    | @ Rated Load            | 9.8               | 5      | 11.3   | 5.6    |  |  |  |  |
|                                    | @ Service Factor        | 11.5              | 5.9    | 12.8   | 6.4    |  |  |  |  |
|                                    | @ Locked Rotor          | 57.27             | 28.91  | 54.01  | 27.5   |  |  |  |  |
| <b>RPM:</b>                        | @ Rated Load            |                   |        |        |        |  |  |  |  |
| <b>Ambient (°C):</b>               | 40                      |                   |        |        |        |  |  |  |  |
| <b>Altitude (FASL):</b>            |                         |                   |        |        |        |  |  |  |  |
| <b>Torques:</b>                    | Breakdown               | 84.43             | 82.11  | 100.63 | 98.18  |  |  |  |  |
|                                    | Locked Rotor            | 134.16            | 114.54 | 137.6  | 123.78 |  |  |  |  |
|                                    | Pull-Up                 | 131.76            | 111.59 | 137.6  | 123.05 |  |  |  |  |
|                                    | Rated Load              |                   |        |        |        |  |  |  |  |
|                                    | Service Factor          |                   |        |        |        |  |  |  |  |
| <b>Watts:</b>                      | Rated Load              |                   |        |        |        |  |  |  |  |
| <b>KVA Code:</b>                   |                         |                   |        |        |        |  |  |  |  |
| <b>Temperature Rise:</b>           | @ Rated Load            | 44                |        | 64.8   |        |  |  |  |  |
|                                    | @ Service Factor        | 60.7              |        | 83.9   |        |  |  |  |  |
| <b>Thermal Protector:</b>          | Trip Temp (°C)          |                   |        |        |        |  |  |  |  |
| <b>Winding Material:</b>           | Start (Auxiliary)       | Cu                |        |        |        |  |  |  |  |
|                                    | Run (Main)              | Al                |        |        |        |  |  |  |  |
| <b>Capacitor(s):</b>               | Start (MFD / Volts)     | 519 MFD / 125 VAC |        |        |        |  |  |  |  |
|                                    | No. of Start Capacitors |                   |        |        |        |  |  |  |  |
|                                    | Run (MFD / Volts)       | N/A               |        |        |        |  |  |  |  |
|                                    | No. of Run Capacitors   |                   |        |        |        |  |  |  |  |
| <b>LOW SPEED PERFORMANCE DATA:</b> |                         |                   |        |        |        |  |  |  |  |
| <b>HP:</b>                         |                         |                   |        |        |        |  |  |  |  |
| <b>Poles:</b>                      |                         |                   |        |        |        |  |  |  |  |
| <b>Volts:</b>                      |                         |                   |        |        |        |  |  |  |  |
| <b>HZ:</b>                         |                         |                   |        |        |        |  |  |  |  |
| <b>Efficiency:</b>                 | @ Rated Load            |                   |        |        |        |  |  |  |  |
| <b>Power Factor:</b>               | @ Rated Load            |                   |        |        |        |  |  |  |  |
| <b>Amps:</b>                       | @ No Load               |                   |        |        |        |  |  |  |  |
|                                    | @ Rated Load            |                   |        |        |        |  |  |  |  |
|                                    | @ Service Factor        |                   |        |        |        |  |  |  |  |
|                                    | @ Locked Rotor          |                   |        |        |        |  |  |  |  |
| <b>Torques:</b>                    | @ Rated Load            |                   |        |        |        |  |  |  |  |
|                                    | Locked Rotor            |                   |        |        |        |  |  |  |  |
|                                    | Pull-Up                 |                   |        |        |        |  |  |  |  |
|                                    | Rated Load              |                   |        |        |        |  |  |  |  |
|                                    | Service Factor          |                   |        |        |        |  |  |  |  |
| <b>Watts:</b>                      | @ Rated Load            |                   |        |        |        |  |  |  |  |
| <b>Temperature Rise:</b>           | @ Rated Load            |                   |        |        |        |  |  |  |  |
|                                    | @ Service Factor        |                   |        |        |        |  |  |  |  |

DRAWING NO. PAGE 1 of 1 REV.  
6K376BF -

# Performance Data



**6K376BF**

REV.

-

## Dayton Manufacturing Company

### Motor Description

Model: C063CXJBV1149  
 Motor ID: Motor #1  
 Poles: 4  
 Volts: 115/230&110/220  
 Frequency: 60&50  
 HP: .75  
 Speed: 1725&1425  
 Phase: 1  
 Protector: CEJ54CY

### Test Conditions

Test Type: Start  
 Test Number: 1  
 Poles: 4  
 Volts: 115  
 Hz: 60  
 Rotation:  
 Special Cond: 2 Line  
 Speed Conn:  
 TestBoard: Amtps Performance Fixture #3  
 Run Cap: 0  
 Start Cap: 0µfd  
 Tested: 5/3/2012 10:29:34 AM  
 Tested By: Sharp, Gerald  
 Gear Ratio: 1:1  
 Bearing Friction: -0.51 Oz-Ft  
 Windage Torque: -1.40 Oz-Ft

| Special Points | Vline (V) | Iline (A) | Watts | RPM  | Tq(Oz-ft) | HP    | Eff (%) | PF (%) |
|----------------|-----------|-----------|-------|------|-----------|-------|---------|--------|
|                | 115.0     | 57.27     | 6220  | 14   | 134.16    | 0.022 | 0.3     | 94.4   |
| PUT OZ-FT      | 115.0     | 57.46     | 6238  | 17   | 131.76    | 0.026 | 0.3     | 94.4   |
|                | 115.0     | 57.37     | 6234  | 42   | 135.34    | 0.067 | 0.8     | 94.5   |
|                | 115.0     | 57.13     | 6211  | 189  | 136.57    | 0.308 | 3.7     | 94.5   |
|                | 115.0     | 57.03     | 6214  | 345  | 138.69    | 0.570 | 6.8     | 94.8   |
|                | 115.0     | 56.54     | 6178  | 486  | 145.42    | 0.842 | 10.2    | 95.0   |
|                | 115.0     | 56.06     | 6116  | 613  | 150.56    | 1.098 | 13.4    | 94.9   |
|                | 115.0     | 56.46     | 6170  | 728  | 154.94    | 1.344 | 16.2    | 95.0   |
|                | 115.0     | 56.69     | 6217  | 833  | 162.01    | 1.606 | 19.3    | 95.4   |
|                | 115.0     | 56.55     | 6231  | 929  | 166.78    | 1.844 | 22.1    | 95.8   |
|                | 115.0     | 56.38     | 6226  | 1016 | 170.82    | 2.066 | 24.8    | 96.0   |
|                | 115.0     | 56.22     | 6230  | 1096 | 173.25    | 2.261 | 27.1    | 96.4   |
|                | 115.0     | 56.06     | 6222  | 1170 | 173.92    | 2.423 | 29.1    | 96.5   |
|                | 115.0     | 55.92     | 6229  | 1237 | 173.80    | 2.558 | 30.6    | 96.9   |
|                | 115.0     | 38.92     | 3699  | 1284 | 68.37     | 1.045 | 21.1    | 82.6   |
|                | 115.0     | 34.28     | 3161  | 1330 | 72.06     | 1.141 | 26.9    | 80.2   |
|                | 115.0     | 32.09     | 2997  | 1390 | 77.19     | 1.277 | 31.8    | 81.2   |
|                | 115.0     | 29.96     | 2832  | 1445 | 79.64     | 1.370 | 36.1    | 82.2   |
|                | 115.0     | 27.83     | 2659  | 1491 | 81.25     | 1.442 | 40.5    | 83.1   |
|                | 115.0     | 25.77     | 2480  | 1531 | 81.61     | 1.487 | 44.7    | 83.7   |
|                | 115.0     | 23.75     | 2294  | 1566 | 80.33     | 1.498 | 48.7    | 84.0   |
|                | 115.0     | 21.69     | 2103  | 1599 | 77.47     | 1.475 | 52.3    | 84.3   |
|                | 115.0     | 19.62     | 1900  | 1629 | 73.68     | 1.428 | 56.1    | 84.2   |
|                | 115.0     | 17.60     | 1698  | 1655 | 69.21     | 1.364 | 59.9    | 83.9   |
|                | 115.0     | 15.68     | 1494  | 1680 | 62.59     | 1.252 | 62.5    | 82.9   |
|                | 115.0     | 13.77     | 1282  | 1702 | 55.50     | 1.125 | 65.5    | 81.0   |
|                | 115.0     | 11.95     | 1066  | 1724 | 46.60     | 0.956 | 66.9    | 77.6   |
|                | 115.0     | 10.12     | 836   | 1745 | 36.25     | 0.753 | 67.2    | 71.8   |
|                | 115.0     | 8.62      | 612   | 1764 | 25.32     | 0.532 | 64.8    | 61.7   |
|                | 115.0     | 7.45      | 380   | 1783 | 12.46     | 0.265 | 52.0    | 44.3   |
|                | 115.0     | 6.99      | 161   | 1800 | 0.00      | 0.000 | 0.0     | 20.0   |

DRAWING NO. PAGE 1 of 8 REV.  
 6K376BF -

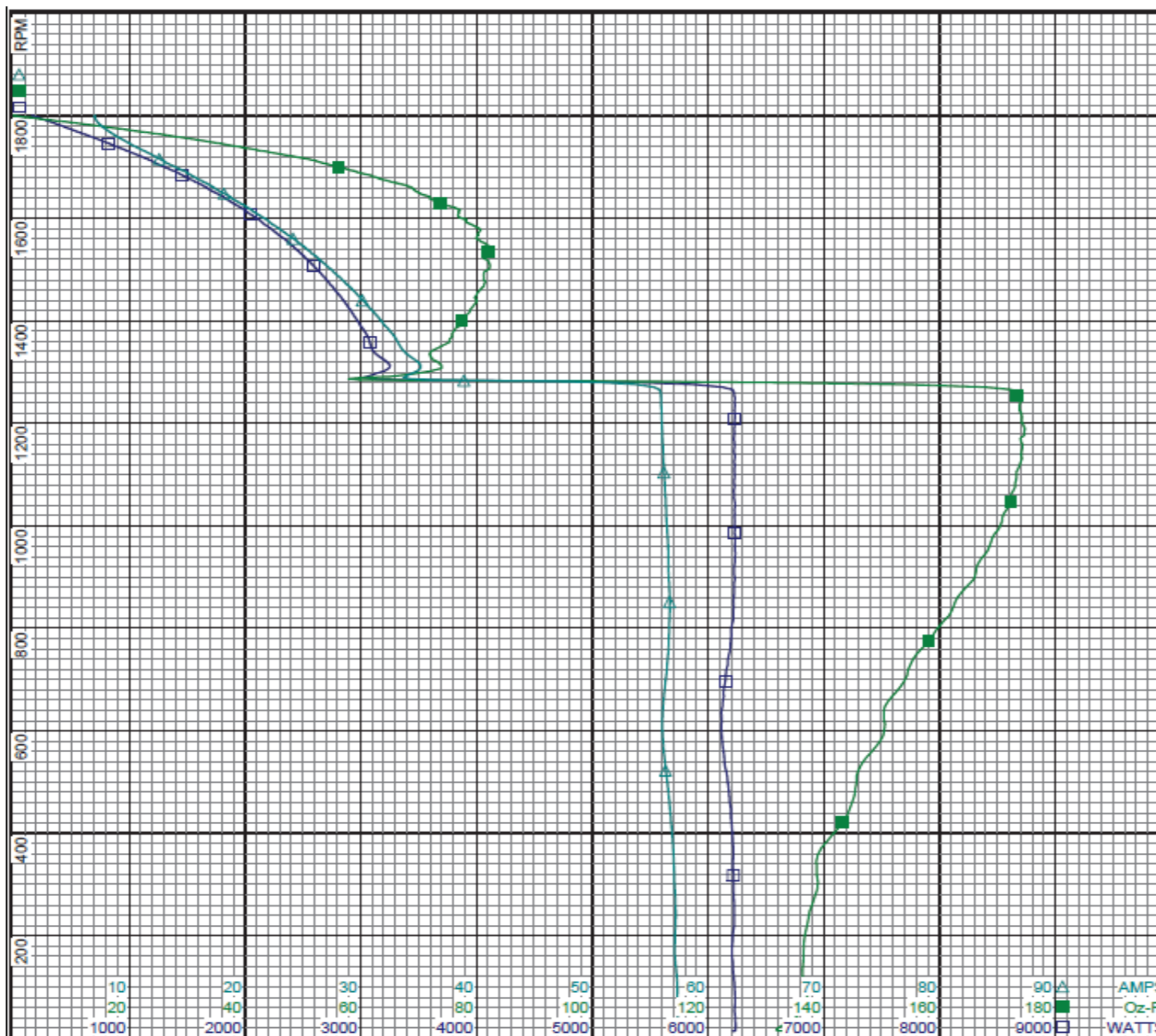
# Performance Data



6K376BF

REV.

-



Curve Descriptions:  
 Motor(1) Test 1 Start 115V 60 Hz 4P  
 2 Line Attempt #1  
 □ SPEED vs WATTS  
 ■ SPEED vs TORQUE  
 △ SPEED vs ILine

Motor Ratings:  
 (1) C063CXJBV1149 ID: Motor #1

DRAWING NO. PAGE 2 of 8 REV.  
 6K376BF -

Dayton Electric Mfg. Co. Lake Forest, IL 60045 USA

# Performance Data



**6K376BF**      REV.  
-

## Dayton Manufacturing Company

### Motor Description

Model: C063CXJBV1149  
 Motor ID: Motor #1  
 Poles: 4  
 Volts: 115/230&110/220  
 Frequency: 60&50  
 HP: .75  
 Speed: 1725&1425  
 Phase: 1  
 Protector: CEJ54CY

### Test Conditions

Test Type: Run      Run Cap: 0  
 Test Number: 3      Start Cap: 0µfd  
 Poles: 4  
 Volts: 115      Tested: 5/3/2012 10:16:26 AM  
 Hz: 60      Tested By: Sharp, Gerald  
 Rotation:  
 Special Cond: 2 Line      Gear Ratio: 1:1  
 Speed Conn:      Bearing Friction: -0.51 Oz-Ft  
 TestBoard: Amps Performance Fixture #3      Windage Torque: -1.40 Oz-Ft

| Special Points     | Vline (V)    | Iline (A)    | Watts       | RPM         | Tq (Oz-ft)   | HP           | Eff (%)     | PF (%)      |
|--------------------|--------------|--------------|-------------|-------------|--------------|--------------|-------------|-------------|
|                    | 115.0        | 6.70         | 146         | 1794        | 0.00         | 0.000        | 0.0         | 19.0        |
|                    | 115.0        | 7.27         | 400         | 1776        | 14.33        | 0.303        | 56.5        | 47.8        |
|                    | 115.0        | 8.76         | 669         | 1755        | 28.80        | 0.602        | 67.1        | 66.4        |
| <b>0.75 HP</b>     | <b>115.0</b> | <b>9.84</b>  | <b>819</b>  | <b>1744</b> | <b>36.12</b> | <b>0.750</b> | <b>68.3</b> | <b>72.4</b> |
| <b>36.52 OZ-FT</b> | <b>115.0</b> | <b>9.91</b>  | <b>828</b>  | <b>1743</b> | <b>36.52</b> | <b>0.758</b> | <b>68.3</b> | <b>72.6</b> |
|                    | 115.0        | 10.52        | 906         | 1737        | 40.06        | 0.828        | 68.2        | 74.8        |
| <b>0.938 HP</b>    | <b>115.0</b> | <b>11.50</b> | <b>1031</b> | <b>1726</b> | <b>45.63</b> | <b>0.938</b> | <b>67.8</b> | <b>77.9</b> |
| <b>1725 RPM</b>    | <b>115.0</b> | <b>11.56</b> | <b>1038</b> | <b>1725</b> | <b>45.93</b> | <b>0.943</b> | <b>67.8</b> | <b>78.1</b> |
| <b>45.65 OZ-FT</b> | <b>115.0</b> | <b>11.51</b> | <b>1032</b> | <b>1726</b> | <b>45.65</b> | <b>0.938</b> | <b>67.8</b> | <b>78.0</b> |
|                    | 115.0        | 12.24        | 1122        | 1717        | 49.49        | 1.011        | 67.3        | 79.7        |
|                    | 115.0        | 14.36        | 1363        | 1695        | 58.89        | 1.188        | 65.1        | 82.5        |
|                    | 115.0        | 16.57        | 1602        | 1670        | 67.34        | 1.339        | 62.3        | 84.1        |
|                    | 115.0        | 18.60        | 1814        | 1645        | 72.46        | 1.419        | 58.4        | 84.8        |
|                    | 115.0        | 20.63        | 2015        | 1618        | 78.48        | 1.512        | 56.0        | 84.9        |
|                    | 115.0        | 22.73        | 2214        | 1589        | 80.69        | 1.526        | 51.4        | 84.7        |
|                    | 115.0        | 24.76        | 2395        | 1557        | 82.74        | 1.534        | 47.8        | 84.1        |
| <b>BDT OZ-FT</b>   | <b>115.0</b> | <b>26.14</b> | <b>2518</b> | <b>1534</b> | <b>84.43</b> | <b>1.542</b> | <b>45.7</b> | <b>83.8</b> |
|                    | 115.0        | 26.74        | 2570        | 1523        | 83.77        | 1.518        | 44.1        | 83.6        |
|                    | 115.0        | 28.65        | 2731        | 1485        | 83.49        | 1.476        | 40.3        | 82.9        |
|                    | 115.0        | 30.52        | 2882        | 1444        | 81.46        | 1.401        | 36.3        | 82.1        |
|                    | 115.0        | 32.28        | 3018        | 1400        | 78.25        | 1.305        | 32.2        | 81.3        |
|                    | 115.0        | 33.97        | 3140        | 1352        | 74.75        | 1.204        | 28.6        | 80.4        |
|                    | 115.0        | 35.58        | 3247        | 1300        | 70.17        | 1.086        | 25.0        | 79.4        |
|                    | 115.0        | 37.09        | 3347        | 1244        | 64.50        | 0.955        | 21.3        | 78.5        |
|                    | 115.0        | 38.49        | 3430        | 1184        | 58.15        | 0.819        | 17.8        | 77.5        |
|                    | 115.0        | 39.80        | 3507        | 1117        | 51.16        | 0.680        | 14.5        | 76.6        |
|                    | 115.0        | 41.00        | 3566        | 1046        | 43.65        | 0.543        | 11.4        | 75.6        |
|                    | 115.0        | 42.11        | 3617        | 970         | 35.35        | 0.408        | 8.4         | 74.7        |
|                    | 115.0        | 43.12        | 3655        | 888         | 25.62        | 0.271        | 5.5         | 73.7        |
|                    | 115.0        | 44.04        | 3676        | 800         | 15.18        | 0.145        | 2.9         | 72.6        |
|                    | 115.0        | 47.24        | 4119        | 706         | 30.25        | 0.254        | 4.6         | 75.8        |
|                    | 115.0        | 55.90        | 6089        | 628         | 146.30       | 1.093        | 13.4        | 94.7        |
|                    | 115.0        | 56.06        | 6121        | 532         | 145.61       | 0.922        | 11.2        | 95.0        |
|                    | 115.0        | 56.74        | 6200        | 411         | 141.10       | 0.691        | 8.3         | 95.0        |
|                    | 115.0        | 57.25        | 6241        | 282         | 135.90       | 0.456        | 5.5         | 94.8        |
|                    | 115.0        | 57.32        | 6236        | 146         | 133.66       | 0.232        | 2.8         | 94.6        |

DRAWING NO.      PAGE 3 of 8      REV.  
**6K376BF**      -

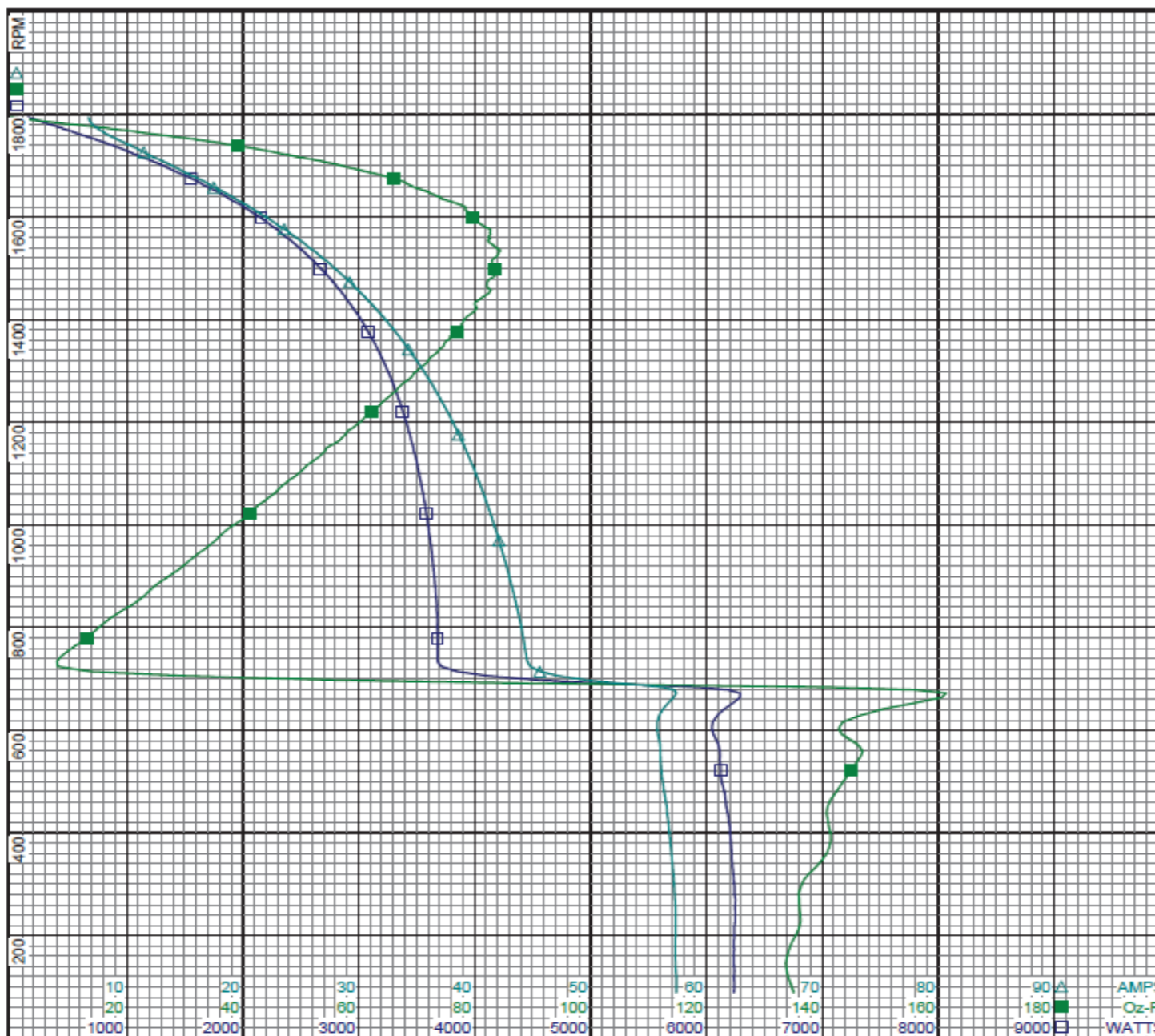
# Performance Data



6K376BF

REV.

-



Curve Descriptions:  
 Motor(1) Test 3 Run 115V 60 Hz 4P  
 2 Line Attempt #1  
 □ SPEED vs WATTS  
 ■ SPEED vs TORQUE  
 △ SPEED vs ILine

Motor Ratings:  
 (1) C063CXJBV1149 ID: Motor #1

|             |             |      |
|-------------|-------------|------|
| DRAWING NO. | PAGE 4 of 8 | REV. |
| 6K376BF     |             | -    |

Dayton Electric Mfg. Co. Lake Forest, IL 60045 USA

©2019 W.W. Grainger, Inc. This design may not be reproduced, modified or redistributed without written permission from W.W. Grainger, Inc.

# Performance Data



|                |           |
|----------------|-----------|
| <b>6K376BF</b> | REV.<br>- |
|----------------|-----------|

## Dayton Manufacturing Company

### Motor Description

Model: C063CXJBV1149  
 Motor ID: Motor #1  
 Poles: 4  
 Volts: 115/230&110/220  
 Frequency: 60&50  
 HP: .75  
 Speed: 1725&1425  
 Phase: 1  
 Protector: CEJ54CY

### Test Conditions

Test Type: Start  
 Test Number: 11  
 Poles: 4  
 Volts: 230  
 Hz: 60  
 Rotation:  
 Special Cond: 2 Line  
 Speed Conn:  
 TestBoard: Amtps Performance Fixture #3  
 Run Cap: 0  
 Start Cap: 0µfd  
 Tested: 5/2/2012 12:15:08 PM  
 Tested By: Sharp, Gerald  
 Gear Ratio: 1:1  
 Bearing Friction: -0.55 Oz-Ft  
 Windage Torque: -2.27 Oz-Ft

| Special Points | Vline (V)    | Iline (A)    | Watts       | RPM       | Tq(Oz-ft)     | HP           | Eff (%)    | PF (%)      |
|----------------|--------------|--------------|-------------|-----------|---------------|--------------|------------|-------------|
| PUT OZ-FT      | 230.0        | 28.91        | 6024        | 14        | 114.54        | 0.019        | 0.2        | 90.6        |
|                | <b>230.0</b> | <b>28.94</b> | <b>6036</b> | <b>12</b> | <b>111.59</b> | <b>0.017</b> | <b>0.2</b> | <b>90.7</b> |
|                | 230.0        | 28.88        | 6026        | 40        | 114.61        | 0.055        | 0.7        | 90.7        |
|                | 230.0        | 28.77        | 6002        | 189       | 113.45        | 0.255        | 3.2        | 90.7        |
|                | 230.0        | 28.60        | 5982        | 345       | 119.89        | 0.492        | 6.1        | 91.0        |
|                | 230.0        | 28.25        | 5933        | 485       | 125.55        | 0.725        | 9.1        | 91.3        |
|                | 230.0        | 27.96        | 5860        | 612       | 128.52        | 0.936        | 11.9       | 91.1        |
|                | 230.0        | 28.14        | 5900        | 726       | 130.22        | 1.126        | 14.2       | 91.2        |
|                | 230.0        | 28.19        | 5953        | 833       | 136.88        | 1.357        | 17.0       | 91.8        |
|                | 230.0        | 28.07        | 5969        | 929       | 142.54        | 1.577        | 19.7       | 92.4        |
|                | 230.0        | 27.88        | 5962        | 1016      | 146.58        | 1.773        | 22.2       | 93.0        |
|                | 230.0        | 27.66        | 5941        | 1097      | 149.63        | 1.954        | 24.5       | 93.4        |
|                | 230.0        | 27.38        | 5896        | 1170      | 150.51        | 2.097        | 26.5       | 93.6        |
|                | 230.0        | 27.14        | 5871        | 1237      | 149.98        | 2.208        | 28.1       | 94.1        |
|                | 230.0        | 20.01        | 3816        | 1287      | 69.13         | 1.060        | 20.7       | 82.9        |
|                | 230.0        | 17.23        | 3173        | 1335      | 70.03         | 1.113        | 26.2       | 80.1        |
|                | 230.0        | 16.12        | 3008        | 1394      | 74.74         | 1.240        | 30.8       | 81.1        |
|                | 230.0        | 15.06        | 2844        | 1447      | 77.85         | 1.341        | 35.2       | 82.1        |
|                | 230.0        | 14.00        | 2669        | 1493      | 78.36         | 1.393        | 38.9       | 82.9        |
|                | 230.0        | 12.97        | 2494        | 1532      | 78.42         | 1.430        | 42.8       | 83.6        |
|                | 230.0        | 11.95        | 2311        | 1568      | 77.22         | 1.442        | 46.5       | 84.1        |
|                | 230.0        | 10.88        | 2110        | 1600      | 74.96         | 1.428        | 50.5       | 84.3        |
|                | 230.0        | 9.89         | 1921        | 1629      | 72.60         | 1.408        | 54.7       | 84.4        |
|                | 230.0        | 8.88         | 1712        | 1656      | 66.46         | 1.310        | 57.1       | 83.8        |
|                | 230.0        | 7.89         | 1507        | 1680      | 61.02         | 1.220        | 60.4       | 83.0        |
|                | 230.0        | 6.92         | 1294        | 1703      | 53.30         | 1.081        | 62.3       | 81.3        |
|                | 230.0        | 5.95         | 1072        | 1724      | 45.26         | 0.929        | 64.7       | 78.3        |
|                | 230.0        | 5.07         | 845         | 1745      | 34.88         | 0.724        | 64.0       | 72.5        |
|                | 230.0        | 4.30         | 628         | 1762      | 24.29         | 0.510        | 60.6       | 63.5        |
|                | 230.0        | 3.74         | 404         | 1781      | 12.14         | 0.258        | 47.5       | 47.0        |
|                | 230.0        | 3.49         | 196         | 1798      | 0.00          | 0.000        | 0.0        | 24.5        |

|                |             |      |
|----------------|-------------|------|
| DRAWING NO.    | PAGE 5 of 8 | REV. |
| <b>6K376BF</b> |             | -    |

Dayton Electric Mfg. Co. Lake Forest, IL 60045 USA

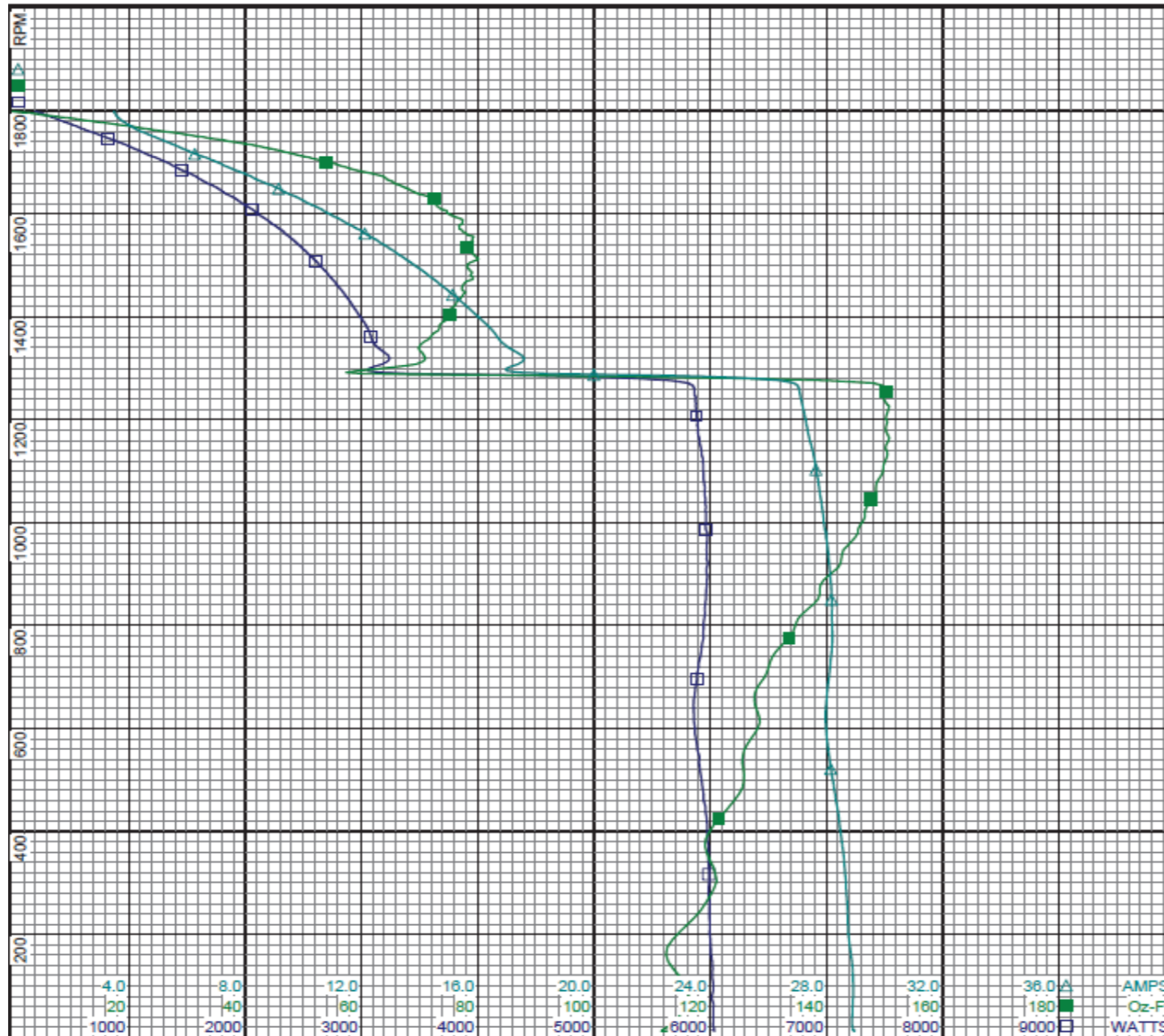
# Performance Data



6K376BF

REV.

-



**Curve Descriptions:**

Motor(1) Test 11 Start 230V 60 Hz 4P  
2 Line Attempt #1

- SPEED vs WATTS
- SPEED vs TORQUE
- △ SPEED vs ILine

**Motor Ratings:**

(1) C063CXJBV1149 ID: Motor #1

|             |             |      |
|-------------|-------------|------|
| DRAWING NO. | PAGE 6 of 8 | REV. |
| 6K376BF     |             | -    |

Dayton Electric Mfg. Co. Lake Forest, IL 60045 USA





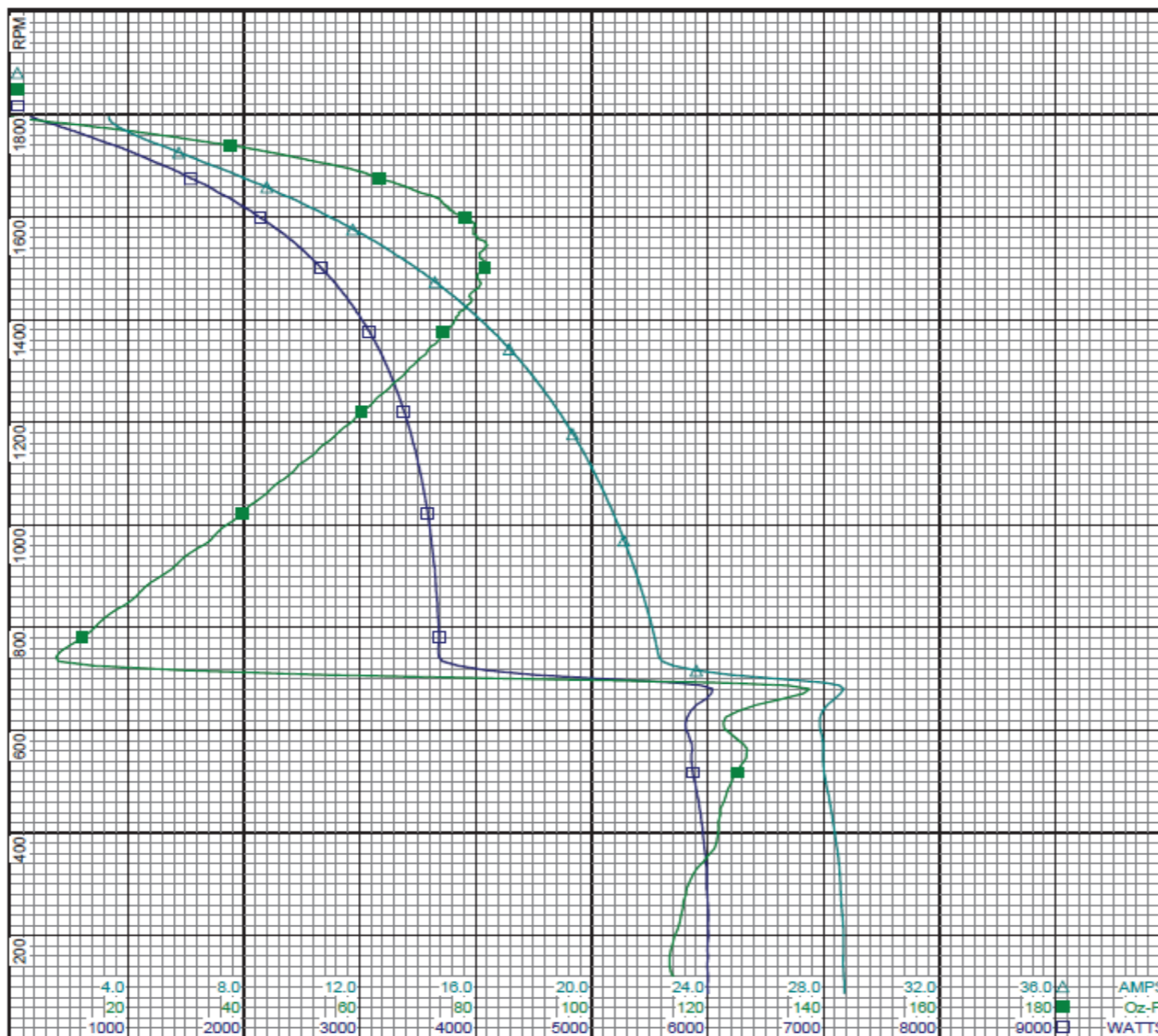
# Performance Data



6K376BF

REV.

-



**Curve Descriptions:**

Motor(1) Test 13 Run 230V 60 Hz 4P  
2 Line Attempt #1

- SPEED vs WATTS
- SPEED vs TORQUE
- △ SPEED vs ILine

**Motor Ratings:**

(1) C063CXJBV1149 ID: Motor #1

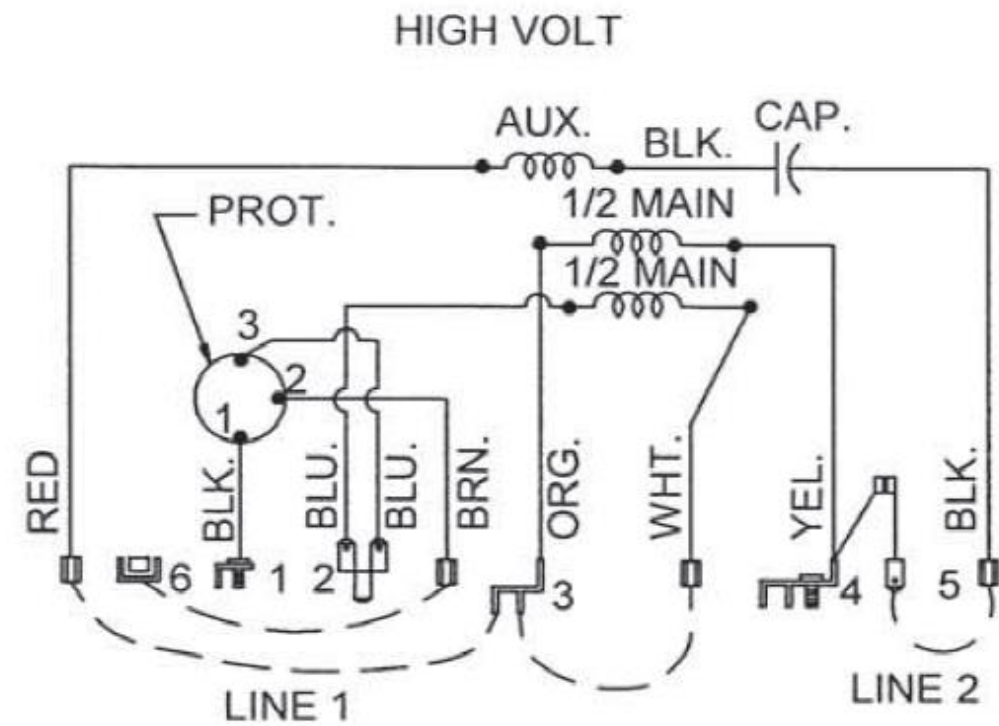
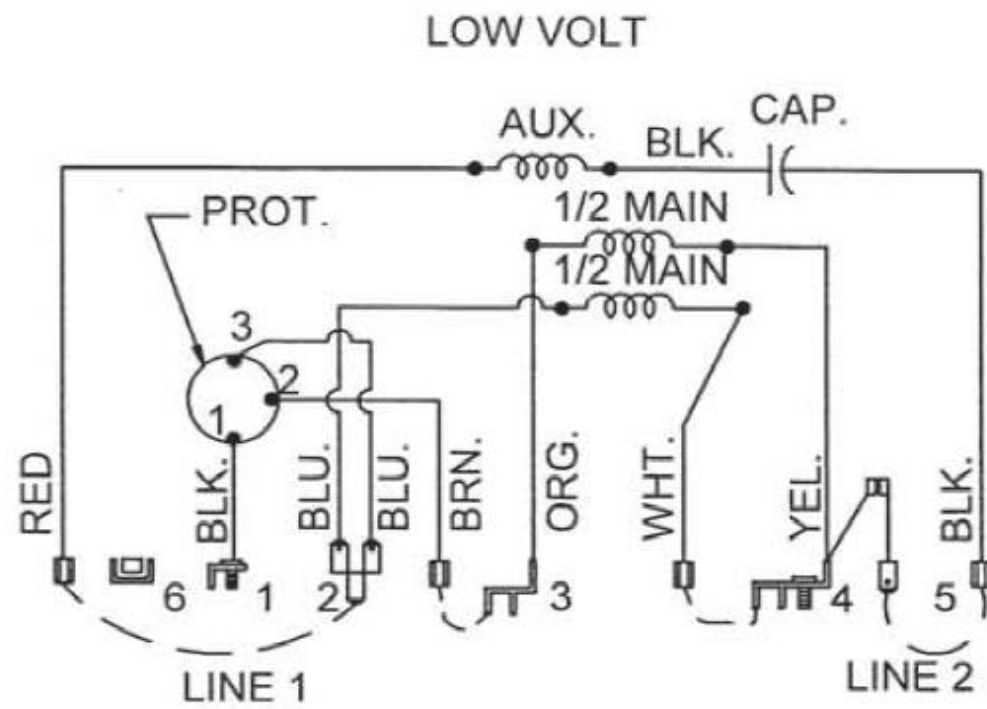
|             |             |      |
|-------------|-------------|------|
| DRAWING NO. | PAGE 8 of 8 | REV. |
| 6K376BF     |             | -    |

Dayton Electric Mfg. Co. Lake Forest, IL 60045 USA

# Wiring Diagram



|         |           |
|---------|-----------|
| 6K376BF | REV.<br>- |
|---------|-----------|



LINE CONN:UNGROUND-1, GROUNDED-4  
TO REV. INTERCHANGE RED & BLK LEAD

|             |             |      |
|-------------|-------------|------|
| DRAWING NO. | PAGE 1 of 1 | REV. |
| 6K376BF     |             | -    |

Dayton Electric Mfg. Co. Lake Forest, IL 60045 USA

**Dayton**<sup>®</sup>**BELT DRIVE FAN &  
BLOWER MOTOR**

HP: 3/4

Part No 6K376BF



VOLTS: 115/230 &amp; 110/220

AMPS: 9.8/5.0 &amp; 11.3/5.6

PH: 1

RPM: 1725 &amp; 1425

HZ: 60 &amp; 50

DUTY: CONT

FR: 56

SF: 1.25

INS CL: B

KVA CODE: K

AMB: 40 °C

ENCL: ODP

SFA: 11.5/5.9 &amp; 12.8/6.4

THERMALLY PROTECTED: AUTO

MFG. NO. PROT. CODE: AVG. F.L.  
EFF.

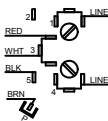
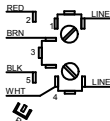
MTR REF: C63CXJBV-1149

**Disconnect Power Before Making Any  
Electrical Connections or Changes**

## CONNECTIONS

115 VOLTS

208 - 230 VOLTS

MOTOR IS CCW ROTATION LEAD END  
TO REVERSE ROTATION INTERCHANGE  
RED AND BLACK LEADS

E37403



258501

Mfd for Dayton Electric Mfg. Co., Lake Forest, IL 60045 USA

Made in Mexico