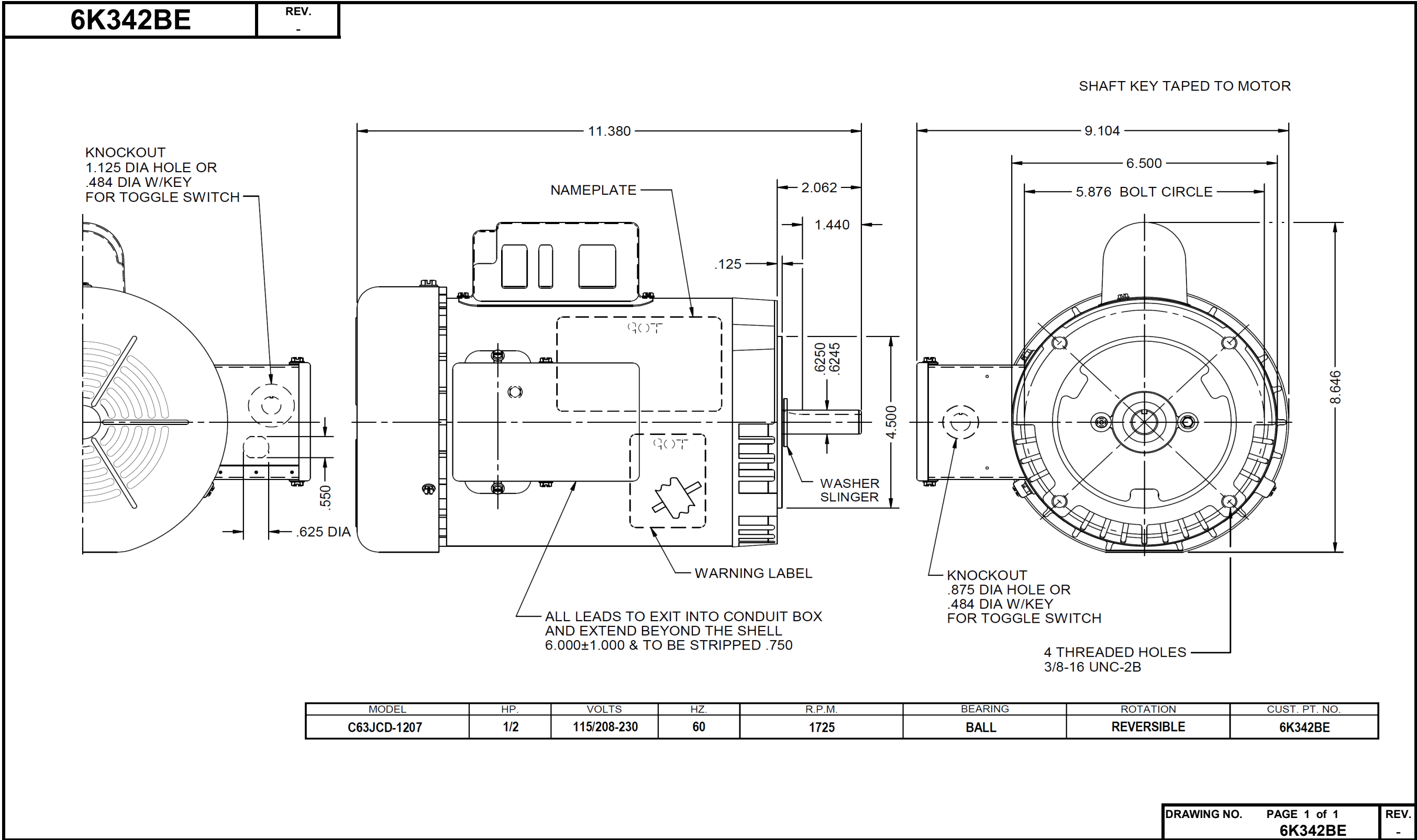


Dimensional Drawing



Dayton Electric Mfg. Co. Lake Forest, IL 60045 USA

©2020 W.W. Grainger, Inc. This design may not be reproduced, modified or redistributed without written permission from W.W. Grainger, Inc.

6K342BE

REV.
-

SPLIT-PHASE & CAPACITOR START MOTOR PERFORMANCE

HP:	1/2						
Poles:	4						
Ambient (°C):	40						
Altitude (FASL):							
No. of Speeds:	1						
Volts:	115/208-230	115	208	230			
HZ:	60	60	60	60			
Service Factor:	1.15						
Efficiency:	@ Rated Load	62.10	62.60	60.70			
Power Factor:	@ Rated Load	63.20	71.50	64.10			
Amps:	@ No Load	7.36	2.86	3.58			
	@ Rated Load	8.26	4.01	4.17			
	@ Service Factor	8.76	4.40	4.44			
	@ Locked Rotor	47.27	20.71	23.25			
RPM:	@ Rated Load	1746	1729	1743			
Torques:	Breakdown	64.6	50.5	62.6			
	Locked Rotor	114.73	73.67	92.24			
	Pull-Up	114.73	73.67	90.91			
	Rated Load	24.05	24.29	24.09			
	Service Factor	27.81	28.15	27.85			
Watts:	Rated Load	600	596	614			
KVA Code:					M		
Temperature Rise:	@ Rated Load	72.50	63.30	72.30			
	@ Service Factor	80.80	75.80	80.30			
Thermal Protector:	Trip Temp (°C)	N/A	N/A	N/A			
Winding Material:	Start (Auxiliary)				Cu		
	Run (Main)				Al		
Capacitor(s):	Start (MFD / Volts)				512.5 uF / 125 V		
	No. of Start Capacitors				1		
	Run (MFD / Volts)						
	No. of Run Capacitors						

LOW SPEED PERFORMANCE DATA:

HP:							
Poles:							
Volts:							
HZ:							
Efficiency:	@ Rated Load						
Power Factor:	@ Rated Load						
Amps:	@ No Load						
	@ Rated Load						
	@ Service Factor						
	@ Locked Rotor						
Torques:	BreakDown						
	Locked Rotor						
	Pull-Up						
	Rated Load						
	Service Factor						
Watts:	@ Rated Load						
Temperature Rise:	@ Rated Load						
	@ Service Factor						

DRAWING NO. PAGE 1 of 1
6K342BE

REV.
-

Performance Data



6K342BE REV.
-

Dayton Manufacturing Company

Motor Description

Model: C063JCD1207012E
 Motor ID: 1
 Poles: 4
 Volts: 115/208-230
 Frequency: 60
 HP: 1/2
 Speed: 1725
 Phase: 1
 Protector: NONE

Test Conditions

Test Type: Start
 Test Number: 10
 Poles: 4
 Volts: 115
 Hz: 60
 Rotation:
 Special Cond: 2 Line Test
 Speed Conn:
 TestBoard: Amps Performance Fixture #1
 Environment:
 Tested: 11/26/2012 12:21:10 PM
 Tested By: Sharp, Gerald
 Bearing Friction: -0.56 Oz-Ft
 Windage Torque: -2.61 Oz-Ft

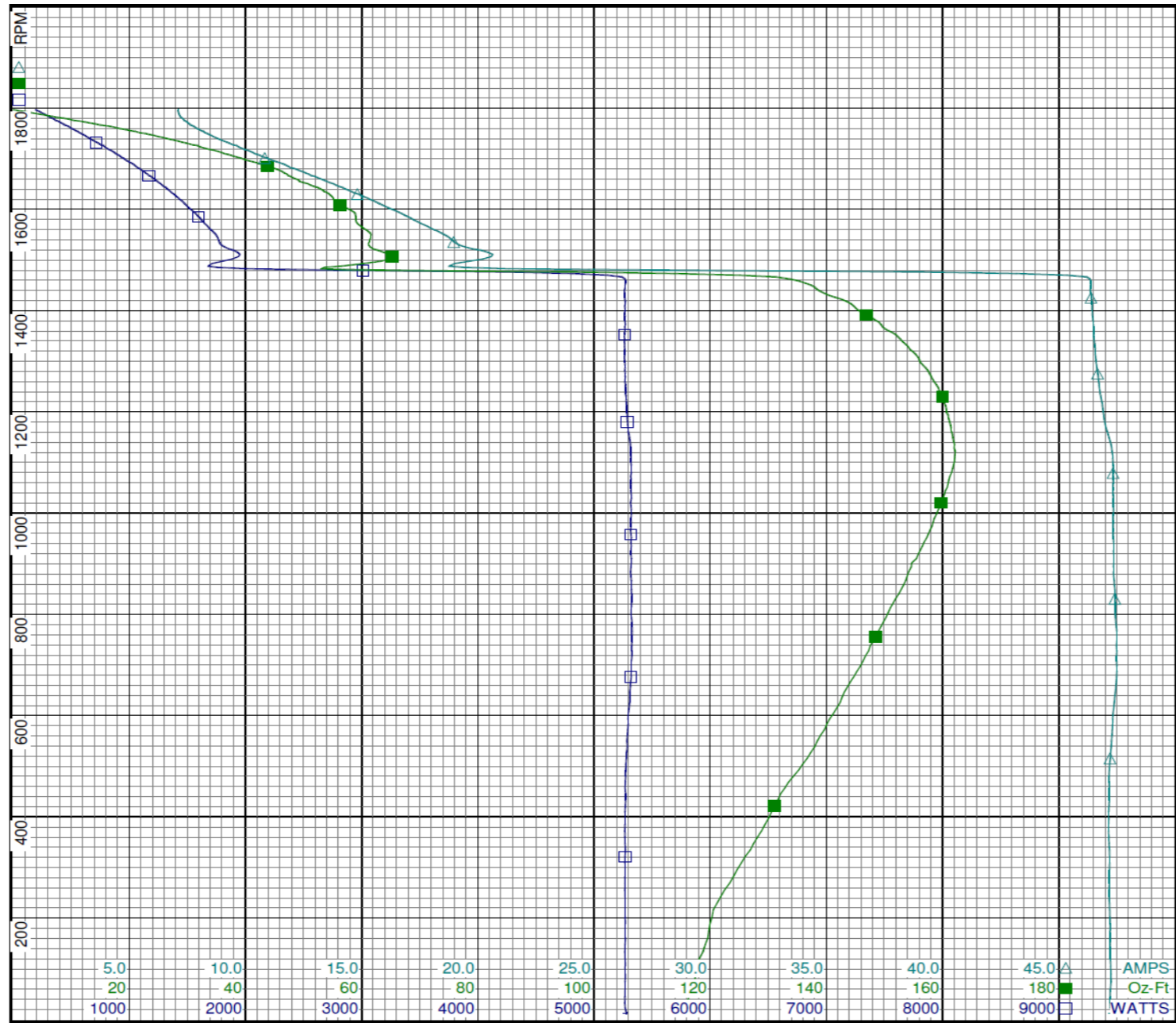
Special Points	Vline (V)	Iline (A)	Watts	RPM	Tq (Oz-ft)	HP	Eff (%)	PF (%)
PUT OZ-FT	115.0	47.27	5266	11	114.73	0.016	0.2	96.9
	115.0	47.27	5266	11	114.73	0.016	0.2	96.9
	115.0	47.20	5267	44	116.36	0.061	0.9	97.0
	115.0	47.21	5269	188	119.94	0.268	3.8	97.1
	115.0	47.19	5268	322	126.03	0.482	6.8	97.1
	115.0	47.18	5271	445	132.10	0.700	9.9	97.1
	115.0	47.29	5287	561	138.98	0.928	13.1	97.2
	115.0	47.48	5316	668	144.20	1.146	16.1	97.4
	115.0	47.49	5327	766	148.94	1.359	19.0	97.5
	115.0	47.40	5319	857	153.24	1.564	21.9	97.6
	115.0	47.36	5318	943	156.82	1.760	24.7	97.6
	115.0	47.34	5315	1021	159.78	1.942	27.3	97.6
	115.0	47.34	5320	1094	161.84	2.108	29.6	97.7
	115.0	47.08	5293	1162	161.50	2.233	31.5	97.8
	115.0	46.83	5276	1224	160.00	2.331	33.0	98.0
	115.0	46.66	5264	1281	157.48	2.402	34.0	98.1
	115.0	46.55	5264	1334	153.58	2.439	34.6	98.3
	115.0	46.47	5265	1382	148.28	2.439	34.6	98.5
	115.0	46.40	5264	1426	141.60	2.403	34.1	98.7
	115.0	46.20	5240	1466	131.28	2.291	32.6	98.6
	115.0	18.99	1711	1493	60.23	1.070	46.7	78.3
	115.0	19.07	1780	1532	61.14	1.115	46.7	81.2
	115.0	17.83	1674	1566	59.87	1.116	49.8	81.6
	115.0	16.46	1544	1597	58.27	1.108	53.5	81.5
	115.0	15.10	1408	1624	54.92	1.062	56.3	81.1
	115.0	13.76	1269	1650	50.69	0.996	58.6	80.2
	115.0	12.46	1127	1674	46.33	0.923	61.1	78.6
	115.0	11.20	978	1696	40.48	0.817	62.3	75.9
	115.0	10.07	837	1717	34.39	0.703	62.6	72.3
	115.0	8.98	685	1736	27.80	0.574	62.5	66.3
	115.0	8.10	539	1755	20.22	0.422	58.4	57.9
	115.0	7.42	383	1774	11.40	0.241	47.0	44.9
	115.0	7.10	225	1793	1.89	0.040	13.4	27.5
	115.0	7.09	191	1797	0.00	0.000	0.0	23.4

DRAWING NO. PAGE 1 of 8 REV.
6K342BE -

Performance Data



6K342BE REV. -



Dayton

Curve Descriptions:
 Motor(1) Test 10 Start 115V 60 Hz 4P
 2 Line Test

- SPEED vs WATTS
- SPEED vs TORQUE
- △ SPEED vs IL

Motor Ratings:
 (1) C063JCD1207012E ID: 1

DRAWING NO.	PAGE 2 of 8	REV.
6K342BE		-

Dayton Electric Mfg. Co. Lake Forest, IL 60045 USA

Performance Data



6K342BE REV.
-

Dayton Manufacturing Company

Motor Description

Model: C063JCD1207012E
 Motor ID: 1
 Poles: 4
 Volts: 115/208-230
 Frequency: 60
 HP: 1/2
 Speed: 1725
 Phase: 1
 Protector: NONE

Test Conditions

Test Type: Run
 Test Number: 4
 Poles: 4
 Volts: 115
 Hz: 60
 Rotation:
 Special Cond:
 Speed Conn:
 TestBoard: Amps Performance Fixture #1
 Environment:
 Tested: 11/26/2012 1:25:12 PM
 Tested By: Sharp, Gerald
 Bearing Friction: -0.62 Oz-Ft
 Windage Torque: -2.78 Oz-Ft

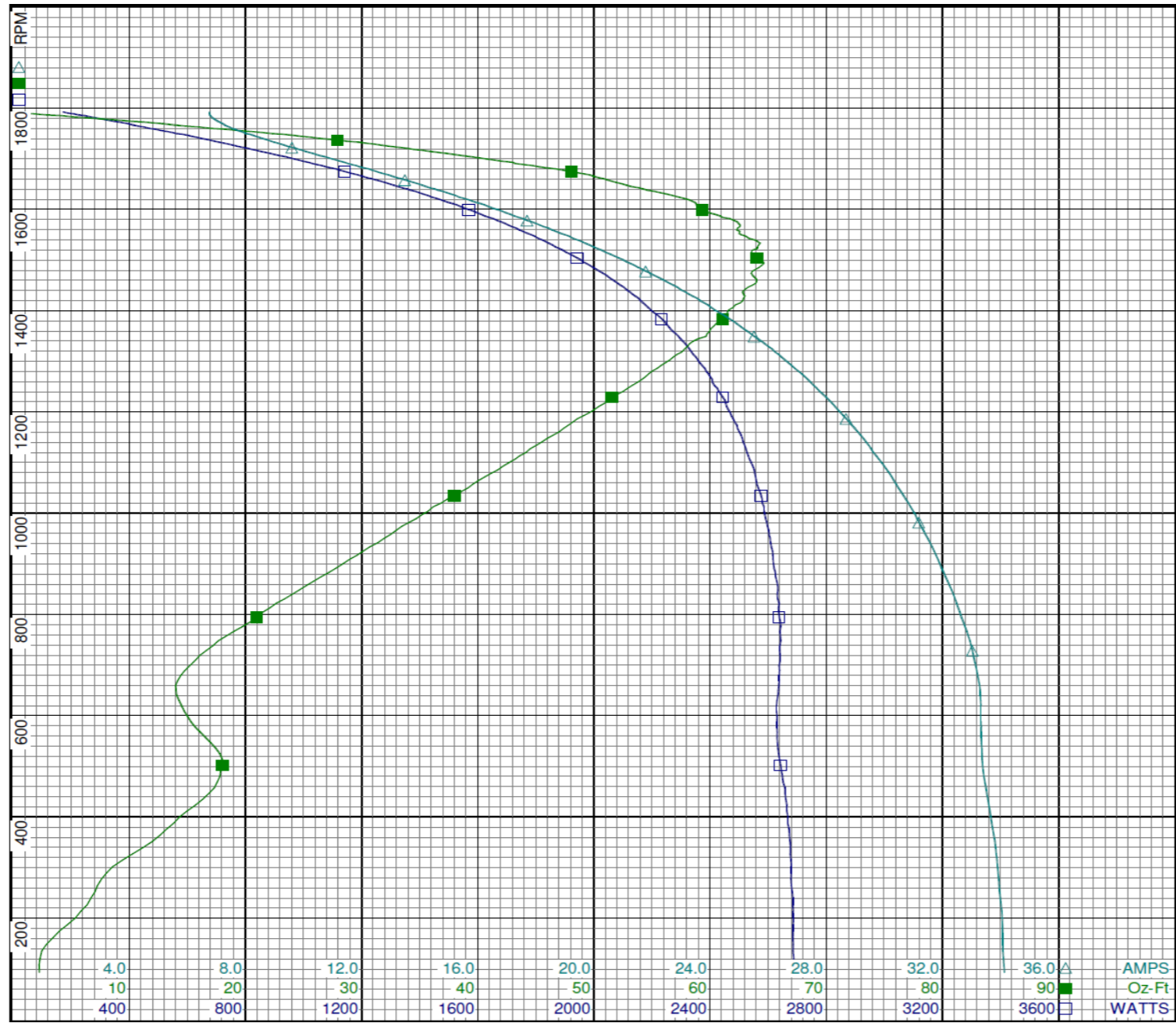
Special Points	Vline (V)	Iline (A)	Watts	RPM	Tq (Oz-ft)	HP	Eff (%)	PF (%)
	115.0	6.76	171	1792	0.00	0.000	0.0	22.0
	115.0	7.05	349	1774	10.26	0.217	46.3	43.0
0.333 HP	115.0	7.43	448	1763	15.87	0.333	55.4	52.4
0.383 HP	115.0	7.64	491	1758	18.30	0.383	58.2	55.8
	115.0	7.83	528	1754	20.41	0.426	60.2	58.7
0.5 HP	115.0	8.26	600	1746	24.05	0.500	62.1	63.2
24.3 OZ-FT	115.0	8.29	605	1745	24.30	0.505	62.2	63.5
0.575 HP	115.0	8.76	676	1737	27.81	0.575	63.5	67.1
28 OZ-FT	115.0	8.78	679	1736	28.00	0.579	63.5	67.3
	115.0	8.88	693	1734	28.70	0.593	63.8	67.9
1725 RPM	115.0	9.42	768	1725	32.20	0.661	64.2	70.9
	115.0	10.08	853	1714	35.94	0.733	64.1	73.6
	115.0	11.40	1015	1693	42.97	0.866	63.7	77.4
	115.0	12.78	1172	1670	49.17	0.977	62.2	79.7
	115.0	14.21	1324	1645	53.19	1.042	58.7	81.0
	115.0	15.66	1470	1619	58.12	1.120	56.9	81.6
	115.0	17.12	1611	1590	60.42	1.143	52.9	81.8
	115.0	18.55	1742	1559	62.29	1.156	49.5	81.7
	115.0	19.98	1867	1526	64.07	1.163	46.5	81.3
BDT OZ-FT	115.0	21.25	1974	1493	64.62	1.149	43.4	80.8
	115.0	21.38	1985	1489	64.45	1.143	43.0	80.7
	115.0	22.74	2091	1450	63.63	1.098	39.2	80.0
	115.0	24.04	2187	1406	61.97	1.037	35.4	79.1
	115.0	25.29	2272	1359	59.95	0.970	31.8	78.1
	115.0	26.46	2351	1308	56.82	0.885	28.1	77.3
	115.0	27.56	2414	1252	53.29	0.794	24.5	76.2
	115.0	28.59	2473	1192	49.09	0.697	21.0	75.2
	115.0	29.54	2523	1127	44.51	0.597	17.7	74.3
	115.0	30.41	2561	1057	39.56	0.498	14.5	73.2
	115.0	31.19	2595	982	34.08	0.398	11.4	72.4
	115.0	31.90	2618	900	28.38	0.304	8.7	71.4
	115.0	32.54	2635	813	22.08	0.214	6.0	70.4
	115.0	33.07	2641	719	16.08	0.138	3.9	69.5
	115.0	33.32	2629	620	14.49	0.107	3.0	68.6
	115.0	33.36	2639	513	18.00	0.110	3.1	68.8
	115.0	33.67	2667	400	14.34	0.068	1.9	68.9
	115.0	33.93	2678	277	7.60	0.025	0.7	68.6
	115.0	34.07	2686	148	2.83	0.005	0.1	68.5

DRAWING NO. PAGE 3 of 8 REV.
6K342BE -

Performance Data



6K342BE REV. -



Dayton

Curve Descriptions:
Motor(1) Test 4 Run 115V 60 Hz 4P

- SPEED vs WATTS
- SPEED vs TORQUE
- △ SPEED vs ILine

Motor Ratings:
(1) C063JCD1207012E ID: 1

DRAWING NO. PAGE 4 of 8 REV. -
6K342BE

Dayton Electric Mfg. Co. Lake Forest, IL 60045 USA

Performance Data



6K342BE REV.
-

Dayton Manufacturing Company

Motor Description

Model: C063JCD1207012E
 Motor ID: 1
 Poles: 4
 Volts: 115/208-230
 Frequency: 60
 HP: 1/2
 Speed: 1725
 Phase: 1
 Protector: NONE

Test Conditions

Test Type: Start
 Test Number: 15
 Poles: 4
 Volts: 230
 Hz: 60
 Rotation:
 Special Cond: 2 Line Test
 Speed Conn:
 TestBoard: Amtps Performance Fixture #1
 Environment:
 Tested: 11/26/2012 12:02:23 PM
 Tested By: Sharp, Gerald
 Bearing Friction: -0.59 Oz-Ft
 Windage Torque: -2.66 Oz-Ft

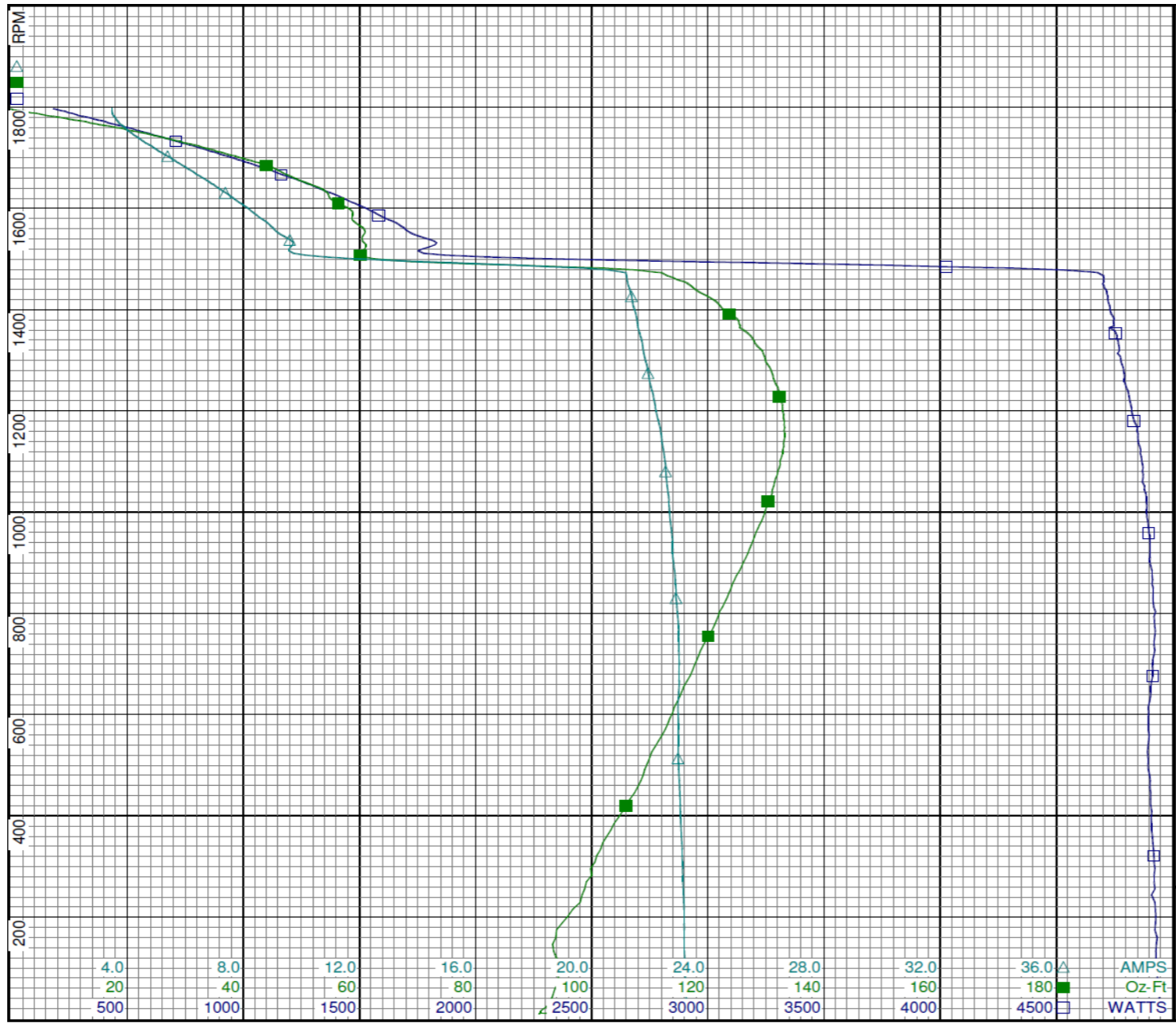
Special Points	Vline (V)	Iline (A)	Watts	RPM	Tq (Oz-ft)	HP	Eff (%)	PF (%)
PUT OZ-FT	230.0	23.25	4938	10	92.24	0.011	0.2	92.3
	230.0	23.25	4944	9	90.91	0.009	0.1	92.4
	230.0	23.25	4943	43	93.20	0.048	0.7	92.4
	230.0	23.18	4927	187	94.80	0.211	3.2	92.4
	230.0	23.12	4919	321	100.85	0.386	5.8	92.5
	230.0	23.03	4906	445	107.33	0.569	8.6	92.6
	230.0	22.98	4899	559	112.09	0.746	11.4	92.7
	230.0	23.01	4910	666	116.41	0.923	14.0	92.8
	230.0	22.99	4926	765	120.62	1.098	16.6	93.2
	230.0	22.88	4912	858	124.21	1.269	19.3	93.3
	230.0	22.78	4903	943	127.74	1.434	21.8	93.6
	230.0	22.66	4887	1021	130.43	1.586	24.2	93.8
	230.0	22.53	4871	1094	132.48	1.726	26.4	94.0
	230.0	22.37	4847	1161	133.08	1.840	28.3	94.2
	230.0	22.14	4815	1223	132.49	1.929	29.9	94.6
	230.0	21.93	4789	1280	130.86	1.994	31.1	95.0
	230.0	21.74	4767	1333	128.10	2.033	31.8	95.3
	230.0	21.55	4749	1382	125.00	2.056	32.3	95.8
	230.0	21.37	4721	1427	119.87	2.036	32.2	96.0
	230.0	21.19	4703	1467	113.02	1.973	31.3	96.5
	230.0	12.86	2592	1498	65.14	1.161	33.4	87.7
	230.0	9.68	1823	1535	60.53	1.106	45.3	81.9
	230.0	8.89	1671	1567	59.76	1.115	49.8	81.7
	230.0	8.20	1536	1598	58.34	1.110	53.9	81.4
	230.0	7.51	1400	1626	54.66	1.058	56.4	81.0
	230.0	6.85	1262	1651	50.64	0.995	58.9	80.1
	230.0	6.20	1122	1675	46.08	0.919	61.1	78.7
	230.0	5.58	978	1696	40.64	0.820	62.6	76.2
	230.0	4.99	832	1717	34.15	0.698	62.6	72.5
	230.0	4.45	681	1736	27.41	0.567	62.1	66.5
	230.0	3.99	535	1755	19.93	0.416	58.0	58.3
	230.0	3.64	377	1774	11.05	0.233	46.2	45.1
	230.0	3.47	216	1793	1.20	0.026	8.9	27.2
	230.0	3.47	182	1797	0.00	0.000	0.0	22.8

DRAWING NO. PAGE 5 of 8 REV.
6K342BE -

Performance Data



6K342BE REV. -



Dayton

Curve Descriptions:
 Motor(1) Test 15 Start 230V 60 Hz 4P
 2 Line Test

- SPEED vs WATTS
- SPEED vs TORQUE
- △ SPEED vs ILine

Motor Ratings:
 (1) C063JCD1207012E ID: 1

DRAWING NO.	PAGE 6 of 8	REV.
6K342BE		-

Dayton Electric Mfg. Co. Lake Forest, IL 60045 USA

Performance Data



6K342BE	REV. -
----------------	-----------

Dayton Manufacturing Company

Motor Description

Model: C063JCD1207012E
Motor ID: 1
Poles: 4
Volts: 115/208-230
Frequency: 60
HP: 1/2
Speed: 1725
Phase: 1
Protector: NONE

Test Conditions

Test Type: Run
Test Number: 12
Poles: 4
Volts: 230
Hz: 60
Rotation:
Special Cond:
Speed Conn:
TestBoard: Amps Performance Fixture #1
Environment:
Tested: 11/26/2012 8:25:00 AM
Tested By: Sharp, Gerald
Bearing Friction: -0.58 Oz-Ft
Windage Torque: -2.46 Oz-Ft

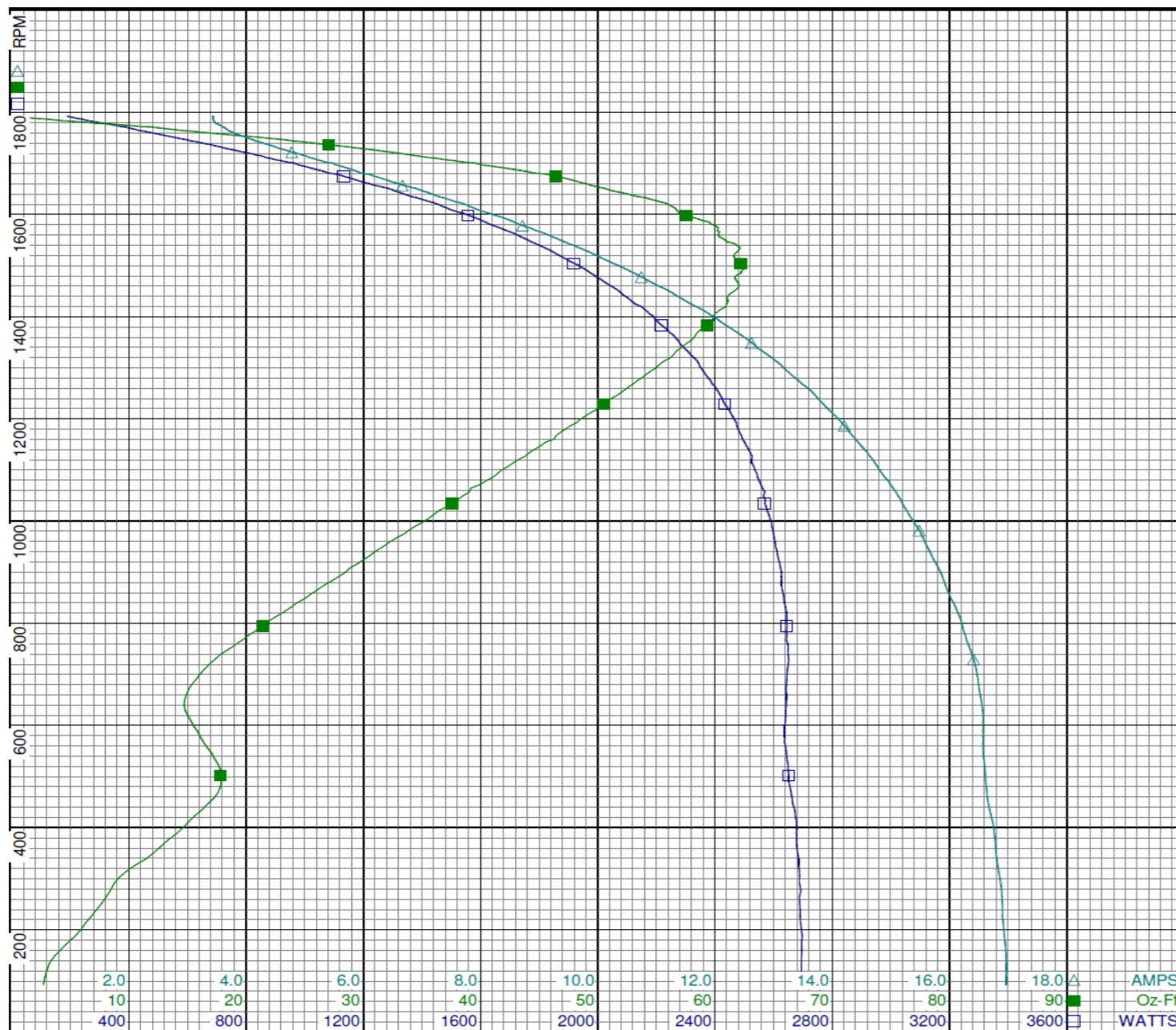
Special Points	Vline (V)	Iline (A)	Watts	RPM	Tq (Oz-ft)	HP	Eff (%)	PF (%)
	230.0	3.436	188	1792	0.00	0.000	0.0	23.8
	230.0	3.563	359	1774	10.12	0.214	44.4	43.8
0.333 HP	230.0	3.748	462	1762	15.88	0.333	53.8	53.6
0.383 HP	230.0	3.856	506	1756	18.32	0.383	56.4	57.1
	230.0	3.927	531	1753	19.76	0.413	58.0	58.8
0.5 HP	230.0	4.166	614	1743	24.09	0.500	60.7	64.1
24.3 OZ-FT	230.0	4.181	619	1743	24.30	0.504	60.8	64.4
	230.0	4.438	694	1734	27.81	0.574	61.7	68.0
0.575 HP	230.0	4.441	695	1734	27.85	0.575	61.8	68.0
28 OZ-FT	230.0	4.451	697	1734	28.00	0.578	61.8	68.1
1725 RPM	230.0	4.693	765	1725	31.28	0.642	62.6	70.9
	230.0	5.015	850	1715	34.52	0.705	61.8	73.7
	230.0	5.657	1007	1693	41.44	0.835	61.8	77.4
	230.0	6.335	1163	1669	47.43	0.943	60.5	79.8
	230.0	7.022	1310	1645	51.37	1.006	57.3	81.1
	230.0	7.743	1457	1619	56.06	1.081	55.3	81.8
	230.0	8.450	1594	1591	58.59	1.109	51.9	82.0
	230.0	9.154	1725	1560	60.24	1.118	48.4	81.9
	230.0	9.859	1848	1526	61.85	1.123	45.3	81.5
BDT OZ-FT	230.0	10.408	1943	1497	62.61	1.116	42.8	81.2
	230.0	10.545	1965	1489	62.23	1.103	41.9	81.0
	230.0	11.221	2072	1449	61.59	1.063	38.3	80.3
	230.0	11.890	2175	1406	59.98	1.004	34.4	79.5
	230.0	12.508	2265	1359	58.18	0.941	31.0	78.7
	230.0	13.093	2344	1308	55.35	0.862	27.4	77.8
	230.0	13.652	2411	1253	52.06	0.776	24.0	76.8
	230.0	14.165	2473	1192	48.14	0.683	20.6	75.9
	230.0	14.643	2526	1126	43.77	0.587	17.3	75.0
	230.0	15.085	2570	1056	39.00	0.490	14.2	74.1
	230.0	15.485	2597	982	33.85	0.396	11.4	72.9
	230.0	15.849	2626	900	28.48	0.305	8.7	72.1
	230.0	16.171	2644	813	22.51	0.218	6.1	71.1
	230.0	16.434	2649	719	16.80	0.144	4.0	70.1
	230.0	16.572	2641	619	15.02	0.111	3.1	69.3
	230.0	16.605	2650	513	17.78	0.109	3.1	69.4
	230.0	16.754	2678	400	14.61	0.069	1.9	69.5
	230.0	16.887	2692	277	8.40	0.028	0.8	69.3
	230.0	16.963	2694	148	3.63	0.006	0.2	69.1

DRAWING NO.	PAGE 7 of 8	REV.
	6K342BE	-

Performance Data



6K342BE REV.
-



Dayton

Curve Descriptions:
Motor(1) Test 12 Run 230V 60 Hz 4P

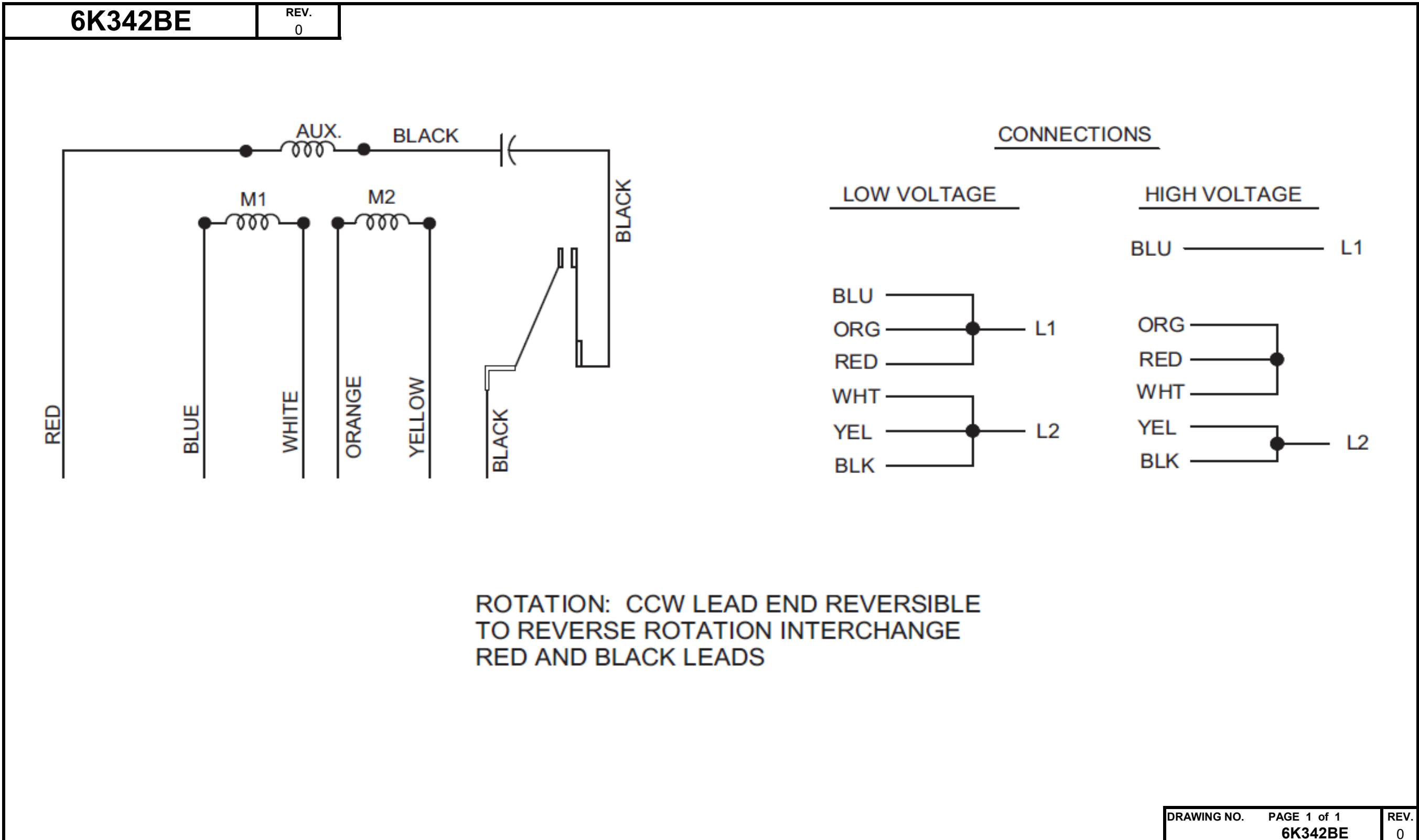
- SPEED vs WATTS
- SPEED vs TORQUE
- △ SPEED vs ILine

Motor Ratings:
(1) C063JCD1207012E ID: 1

DRAWING NO. PAGE 8 of 8 REV.
6K342BE -

Dayton Electric Mfg. Co. Lake Forest, IL 60045 USA

Wiring Diagram

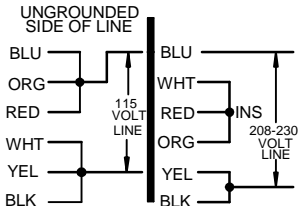


Dayton[®]Part No **6K342BE****INDUSTRIAL
MOTOR****HP:** 1/2**PH:** 1**VOLTS:** 115/208-230**HZ:** 60**AMPS:** 7.7/3.9-3.9**FR:** 56 C**RPM:** 1725**INS CL:** B**DUTY:** CONT**AMB:** 40 °C**SF:** 1.15**SFA:** 8.3/3.9-4.2**KVA CODE:** M**ENCL:** TEFC**MTR REF:** C63JCD-1207**THERMALLY PROTECTED:** NONEPROT. CODE: MFG. NO. **S.F. AT 208 VOLTS IS 1.0**

258501



E47479

Disconnect Power Before Making
Any Electrical Connections or Changes**CONNECTIONS**MOTOR IS CCW ROTATION LEAD END
TO REVERSE ROTATION INTERCHANGE
RED AND BLACK LEADS

Mfd for Dayton Electric Mfg. Co., Lake Forest, IL 60045 USA

Made in Mexico