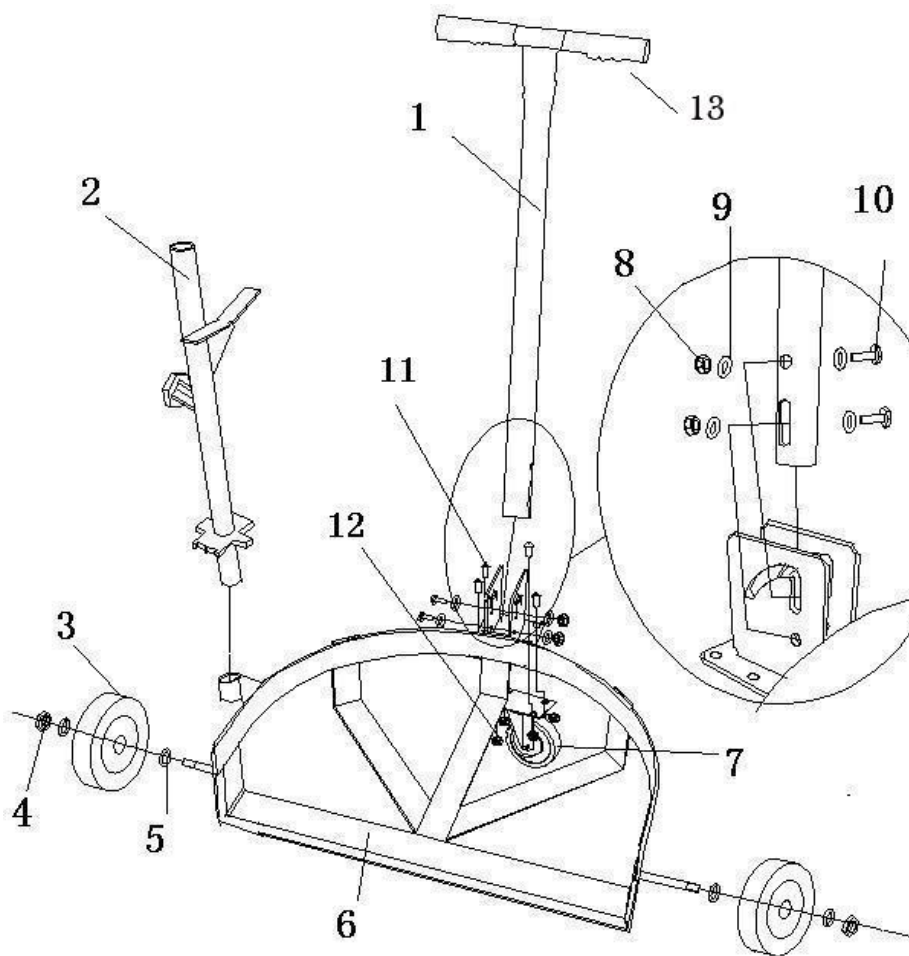


Ref No.	Description	Part No.	Qty
1	Handle	*	1 pc
2	Tool Bar	MH6FVJ301G	1 pc
3 & 4 & 5	6" Wheel Kit	MH6FVJ302G	1 pc
6	Base	*	1 pc
7 & 12	3" Caster Kit	MH6FVJ303G	1 pc
8	Nut (M10)	*	2 pcs
9	Washer	*	4 pcs
10	Bolt (M10x57)	*	2 pcs
11	Bolt (M8x16)	*	4 pcs
13	Handle Grip	MH6FVJ201G	2 pcs

(*) Not available as replacement part



1. Position the dolly base (6) on a flat working surface.
2. Use the bolt (11) and nut (12) to screw the caster (7) into the hole which installed on the back of the base.
3. Fasten each wheel (3) to axle by using flat washer (5) and lock nuts (4).
4. Insert the handle (1) into "U" shape part which installed on the back of the base (6), use bolt (10), nut (8), and washer (9) to fasten the handle with the "U" shape.
5. Put the tool bar (2) into the pipe on the side of the base (6).