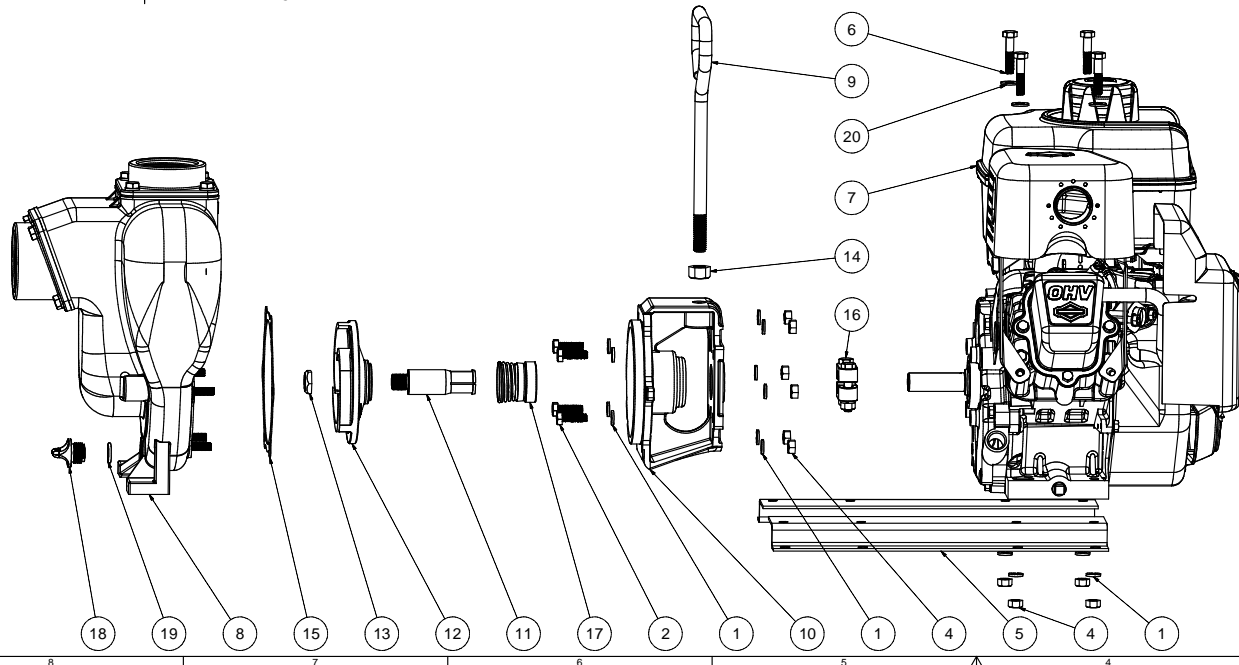


SECTION C-C
SCALE .5

		Parts List	
ITEM	QTY	PART NUMBER	DESCRIPTION
1	14	V10118	5/16" LOCKWASHER
2	4	17040	5/16-24 X 1" HHCS
3	1	12910	DECAL (N/S)
4	10	V10119	5/16" HEX NUT
5	1	17033	Z-RAIL (PAIR)
6	4	17034	5/16-18 X 1-1/2" HHCS
7	1	E6.5PRO	6.5 HP B&S ENGINE
8	1	17126	2" PUMP HOUSING ASSY
9	1	15022	2" PUMP HANDLE
10	1	17004	GAS ENGINE ADAPTER
11	1	17006	ADAPTER SHAFT
12	1	17008	PUMP IMPELLER
13	1	17009B	5/8-18 IMPELLER NUT
14	1	17010	1/2-13 HEX NUT
15	1	17018	PUMP ADAPTER GASKET
16	1	17123	CI PUMP KEYED CLAMP
17	1	17135	MECH. SEAL ASSY.
18	1	12777	1/2" DRAIN PLUG
19	1	UV15163	2-114 O'RING
20	4	12901	5/16" FLAT WASHER



THIS DRAWING AND ALL INFORMATION CONTAINED THEREON ARE THE EXCLUSIVE PROPERTY OF BANJO CORPORATION.

UNLESS SPECIFICALLY NOTED, THIS DRAWING AND ITEMS SHOWN ON THIS DRAWING ARE SUBJECT TO CHANGE AT ANY TIME.

BANJO CORPORATION
 150 BANJO DRIVE, CRAWFORDSVILLE, IN 47933
 WEB SITE: WWW.BANJOCORP.COM
 E-MAIL: SALES1@BANJOCORP.COM

DESCRIPTION
2" CI PUMP W/ 6.5 HP B&S

PART NUMBER
200PI6PRO