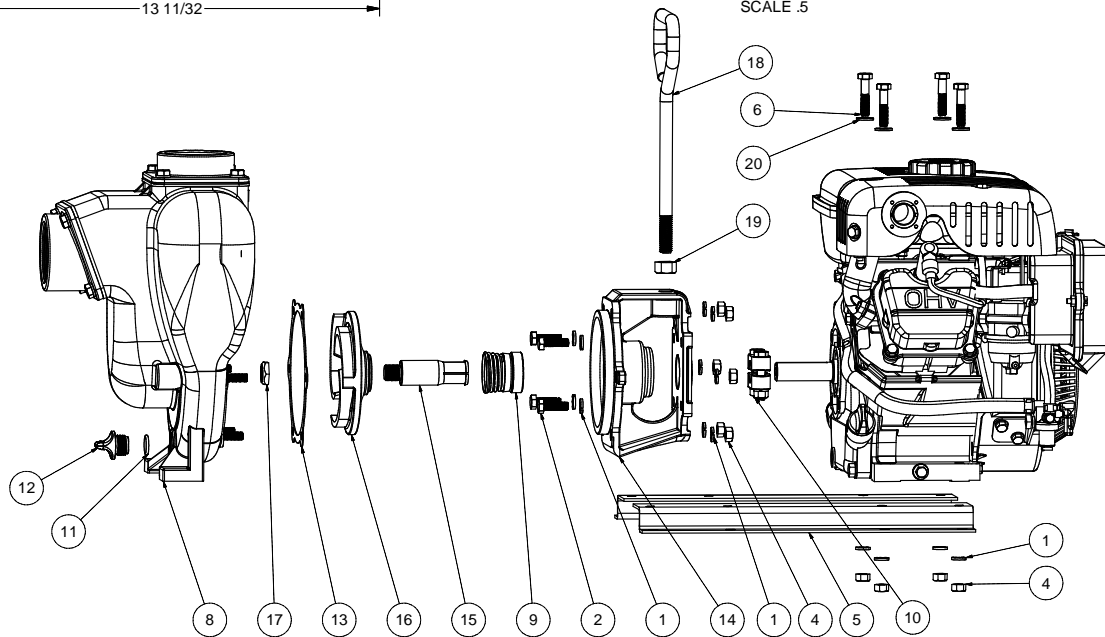


SECTION C-C
SCALE .5



Parts List			
ITEM	QTY	PART NUMBER	DESCRIPTION
1	14	V10118	5/16" LOCKWASHER
2	4	17040	5/16-24 X 1" HHCS
3	1	12910	DECAL (N/S)
4	10	V10119	5/16" HEX NUT
5	1	17033	Z-RAIL (PAIR)
6	4	17034	5/16-18 X 1-1/2" HHCS
7	1	E3	3.5 HP B&S
8	1	17126	2" PUMP HOUSING ASSY
9	1	17135	MECH. SEAL ASSY.
10	1	17123	CI PUMP KEYED CLAMP
11	1	UV15163	2-114 O'RING
12	1	12777	1/2" DRAIN PLUG
13	1	17018	PUMP ADAPTER GASKET
14	1	17004	GAS ENGINE ADAPTER
15	1	17006	ADAPTER SHAFT
16	1	17008	PUMP IMPELLER
17	1	17009B	5/8-18 IMPELLER NUT
18	1	15022	2" PUMP HANDLE
19	1	17010	1/2-13 HEX NUT
20	4	12901	5/16" FLAT WASHER



BANJO CORPORATION
 150 BANJO DRIVE, CRAWFORDSVILLE, IN 47933
 WEB SITE: WWW.BANJOCORP.COM
 E-MAIL: SALES1@BANJOCORP.COM

THIS DRAWING AND ALL INFORMATION CONTAINED THEREON ARE THE EXCLUSIVE PROPERTY OF BANJO CORPORATION.
 UNLESS SPECIFICALLY NOTED, THIS DRAWING AND ITEMS SHOWN ON THIS DRAWING ARE SUBJECT TO CHANGE AT ANY TIME.

DESCRIPTION
2" CI PUMP W/ 3.5 HP B&S
 PART NUMBER
200PI-3