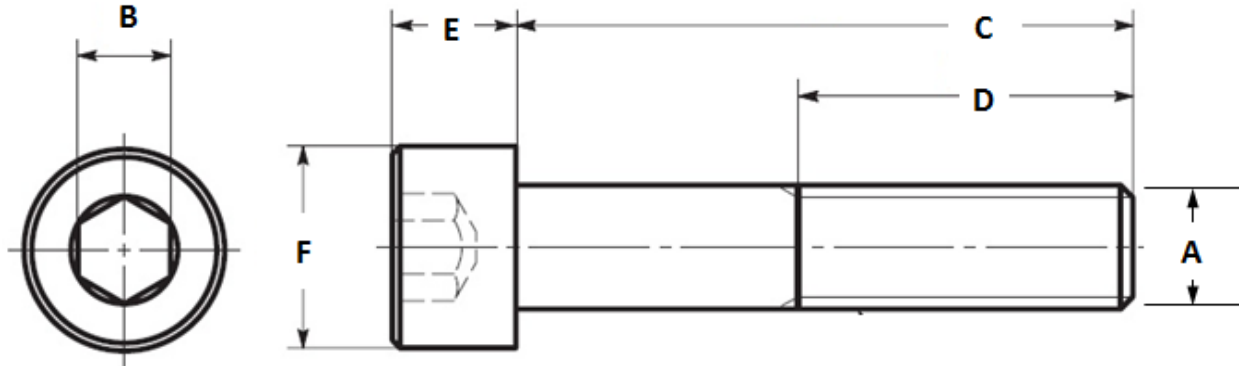


# ~~KEEP-FILL~~<sup>®</sup>

*Inventory Management Solutions*

## ARMOR COAT SOCKET HEAD CAP SCREW



	A		B	C	D	E	F
PART NUMBER	THREAD SIZE	DRIVE TYPE	DRIVE SIZE	LENGTH UNDER HEAD	THREAD LENGTH	HEAD HEIGHT	HEAD DIAMETER
UST235880	#6-32	Socket	7/64	1/4	1/4	0.138	.226
UST235881	#6-32	Socket	7/64	3/8	3/8	0.138	.226
UST235882	#6-32	Socket	7/64	1/2	1/2	0.138	.226
UST235883	#6-32	Socket	7/64	5/8	5/8	0.138	.226
UST235884	#6-32	Socket	7/64	3/4	3/4	0.138	.226
UST235885	#6-32	Socket	7/64	7/8	7/8	0.138	.226
UST235886	#6-32	Socket	7/64	1	1	0.138	.226
UST235887	#6-32	Socket	7/64	1 1/4	1	0.138	.226
UST235888	#6-32	Socket	7/64	1 1/2	1	0.138	.226
UST235889	#6-32	Socket	7/64	1 3/4	1	0.138	.226
UST235890	#6-32	Socket	7/64	2	1	0.138	.226
UST235891	#8-32	Socket	9/64	1/4	1/4	0.164	.270
UST235892	#8-32	Socket	9/64	3/8	3/8	0.164	.270
UST235893	#8-32	Socket	9/64	1/2	1/2	0.164	.270
UST235894	#8-32	Socket	9/64	5/8	5/8	0.164	.270
UST235895	#8-32	Socket	9/64	3/4	3/4	0.164	.270
UST235896	#8-32	Socket	9/64	7/8	7/8	0.164	.270
UST235897	#8-32	Socket	9/64	1	1	0.164	.270
UST235898	#8-32	Socket	9/64	1 1/4	1	0.164	.270
UST235899	#8-32	Socket	9/64	1 1/2	1	0.164	.270
UST235900	#8-32	Socket	9/64	1 3/4	1	0.164	.270
UST235901	#8-32	Socket	9/64	2	1	0.164	.270
UST235902	#8-32	Socket	9/64	2 1/2	1	0.164	.270

# ~~KEEP-FILL~~<sup>®</sup>

*Inventory Management Solutions*

## ARMOR COAT SOCKET HEAD CAP SCREW

	A		B	C	D	E	F
PART NUMBER	THREAD SIZE	DRIVE TYPE	DRIVE SIZE	LENGTH UNDER HEAD	THREAD LENGTH	HEAD HEIGHT	HEAD DIAMETER
UST235903	#10-24	Socket	5/32	1/4	1/4	0.190	.312
UST235904	#10-24	Socket	5/32	3/8	3/8	0.190	.312
UST235905	#10-24	Socket	5/32	1/2	1/2	0.190	.312
UST235906	#10-24	Socket	5/32	5/8	5/8	0.190	.312
UST235907	#10-24	Socket	5/32	3/4	3/4	0.190	.312
UST235908	#10-24	Socket	5/32	7/8	7/8	0.190	.312
UST235909	#10-24	Socket	5/32	1	1	0.190	.312
UST235910	#10-24	Socket	5/32	1 1/4	1	0.190	.312
UST235911	#10-24	Socket	5/32	1 1/2	1	0.190	.312
UST235912	#10-24	Socket	5/32	1 3/4	1	0.190	.312
UST235913	#10-24	Socket	5/32	2	1	0.190	.312
UST235914	#10-24	Socket	5/32	2 1/4	1	0.190	.312
UST235915	#10-24	Socket	5/32	2 1/2	1	0.190	.312
UST235916	1/4-20	Socket	3/16	1/4	1/4	0.250	.375
UST235917	1/4-20	Socket	3/16	3/8	3/8	0.250	.375
UST235918	1/4-20	Socket	3/16	1/2	1/2	0.250	.375
UST235919	1/4-20	Socket	3/16	5/8	5/8	0.250	.375
UST235920	1/4-20	Socket	3/16	3/4	3/4	0.250	.375
UST235921	1/4-20	Socket	3/16	7/8	7/8	0.250	.375
UST235922	1/4-20	Socket	3/16	1	1	0.250	.375
UST235923	1/4-20	Socket	3/16	1 1/4	1 1/4	0.250	.375
UST235924	1/4-20	Socket	3/16	1 1/2	1 1/4	0.250	.375
UST235925	1/4-20	Socket	3/16	1 3/4	1 1/4	0.250	.375
UST235926	1/4-20	Socket	3/16	2	1 1/4	0.250	.375
UST235927	1/4-20	Socket	3/16	2 1/4	1 1/4	0.250	.375
UST235928	1/4-20	Socket	3/16	2 1/2	1 1/4	0.250	.375
UST235929	1/4-20	Socket	3/16	2 3/4	1 1/4	0.250	.375
UST235930	1/4-20	Socket	3/16	3	1 1/4	0.250	.375
UST235931	1/4-20	Socket	3/16	3 1/4	1 1/4	0.250	.375
UST235932	1/4-20	Socket	3/16	3 1/2	1 1/4	0.250	.375
UST235933	1/4-20	Socket	3/16	3 3/4	1 1/4	0.250	.375
UST235934	1/4-20	Socket	3/16	4	1 1/4	0.250	.375

# ~~KEEP-FILL~~<sup>®</sup>

*Inventory Management Solutions*

## ARMOR COAT SOCKET HEAD CAP SCREW

	A		B	C	D	E	F
PART NUMBER	THREAD SIZE	DRIVE TYPE	DRIVE SIZE	LENGTH UNDER HEAD	THREAD LENGTH	HEAD HEIGHT	HEAD DIAMETER
UST235935	5/16-18	Socket	1/4	3/8	3/8	0.312	.469
UST235936	5/16-18	Socket	1/4	1/2	1/2	0.312	.469
UST235937	5/16-18	Socket	1/4	5/8	5/8	0.312	.469
UST235938	5/16-18	Socket	1/4	3/4	3/4	0.312	.469
UST235939	5/16-18	Socket	1/4	7/8	7/8	0.312	.469
UST235940	5/16-18	Socket	1/4	1	1	0.312	.469
UST235941	5/16-18	Socket	1/4	1 1/4	1 1/4	0.312	.469
UST235942	5/16-18	Socket	1/4	1 1/2	1 1/2	0.312	.469
UST235943	5/16-18	Socket	1/4	1 3/4	1 1/2	0.312	.469
UST235944	5/16-18	Socket	1/4	2	1 1/2	0.312	.469
UST235945	5/16-18	Socket	1/4	2 1/4	1 1/2	0.312	.469
UST235946	5/16-18	Socket	1/4	2 1/2	1 1/2	0.312	.469
UST235947	5/16-18	Socket	1/4	2 3/4	1 1/2	0.312	.469
UST235948	5/16-18	Socket	1/4	3	1 1/2	0.312	.469
UST235949	5/16-18	Socket	1/4	3 1/4	1 1/2	0.312	.469
UST235950	5/16-18	Socket	1/4	3 1/2	1 1/2	0.312	.469
UST235951	5/16-18	Socket	1/4	4	1 1/2	0.312	.469
UST235952	3/8-16	Socket	5/16	1/2	1/2	0.375	.563
UST235953	3/8-16	Socket	5/16	5/8	5/8	0.375	.563
UST235954	3/8-16	Socket	5/16	3/4	3/4	0.375	.563
UST235955	3/8-16	Socket	5/16	7/8	7/8	0.375	.563
UST235956	3/8-16	Socket	5/16	1	1	0.375	.563
UST235957	3/8-16	Socket	5/16	1 1/4	1 1/4	0.375	.563
UST235958	3/8-16	Socket	5/16	1 1/2	1 1/2	0.375	.563
UST235959	3/8-16	Socket	5/16	1 3/4	1 1/2	0.375	.563
UST235960	3/8-16	Socket	5/16	2	1 1/2	0.375	.563
UST235961	3/8-16	Socket	5/16	2 1/4	1 1/2	0.375	.563
UST235962	3/8-16	Socket	5/16	2 1/2	1 1/2	0.375	.563
UST235963	3/8-16	Socket	5/16	2 3/4	1 1/2	0.375	.563
UST235964	3/8-16	Socket	5/16	3	1 1/2	0.375	.563
UST235965	3/8-16	Socket	5/16	3 1/4	1 1/2	0.375	.563
UST235966	3/8-16	Socket	5/16	3 1/2	1 1/2	0.375	.563

## ARMOR COAT SOCKET HEAD CAP SCREW

	A		B	C	D	E	F
PART NUMBER	THREAD SIZE	DRIVE TYPE	DRIVE SIZE	LENGTH UNDER HEAD	THREAD LENGTH	HEAD HEIGHT	HEAD DIAMETER
UST235967	3/8-16	Socket	5/16	4	1 1/2	0.375	.563
UST235968	3/8-16	Socket	5/16	4 1/2	1 1/2	0.375	.563
UST235969	3/8-16	Socket	5/16	5	1 1/2	0.375	.563
UST235970	3/8-16	Socket	5/16	5 1/2	1 1/2	0.375	.563
UST235971	3/8-16	Socket	5/16	6	1 1/2	0.375	.563
UST235972	7/16-14	Socket	3/8	1/2	1/2	0.438	.656
UST235973	7/16-14	Socket	3/8	5/8	5/8	0.438	.656
UST235974	7/16-14	Socket	3/8	7/8	7/8	0.438	.656
UST235975	7/16-14	Socket	3/8	1	1	0.438	.656
UST235976	7/16-14	Socket	3/8	1 1/4	1 1/4	0.438	.656
UST235977	7/16-14	Socket	3/8	1 1/2	1 1/2	0.438	.656
UST235978	7/16-14	Socket	3/8	1 3/4	1 3/4	0.438	.656
UST235979	7/16-14	Socket	3/8	2	2	0.438	.656
UST235980	7/16-14	Socket	3/8	2 1/4	2 1/4	0.438	.656
UST235981	7/16-14	Socket	3/8	2 1/2	2 1/2	0.438	.656
UST235982	7/16-14	Socket	3/8	2 3/4	2 3/4	0.438	.656
UST235983	7/16-14	Socket	3/8	3	3	0.438	.656
UST235984	7/16-14	Socket	3/8	3 1/2	3 1/2	0.438	.656
UST235985	7/16-14	Socket	3/8	4	4	0.438	.656
UST235986	1/2-13	Socket	3/8	1/2	1/2	0.500	.750
UST235987	1/2-13	Socket	3/8	5/8	5/8	0.500	.750
UST235988	1/2-13	Socket	3/8	3/4	3/4	0.500	.750
UST235989	1/2-13	Socket	3/8	7/8	7/8	0.500	.750
UST235990	1/2-13	Socket	3/8	1	1	0.500	.750
UST235991	1/2-13	Socket	3/8	1 1/4	1 1/4	0.500	.750
UST235992	1/2-13	Socket	3/8	1 1/2	1 1/2	0.500	.750
UST235993	1/2-13	Socket	3/8	1 3/4	1 3/4	0.500	.750
UST235994	1/2-13	Socket	3/8	2	2	0.500	.750
UST235995	1/2-13	Socket	3/8	2 1/4	2	0.500	.750
UST235996	1/2-13	Socket	3/8	2 1/2	2	0.500	.750
UST235997	1/2-13	Socket	3/8	2 3/4	2	0.500	.750
UST235998	1/2-13	Socket	3/8	3	2	0.500	.750

# ~~KEEP-FILL~~<sup>®</sup>

*Inventory Management Solutions*

## ARMOR COAT SOCKET HEAD CAP SCREW

	A		B	C	D	E	F
PART NUMBER	THREAD SIZE	DRIVE TYPE	DRIVE SIZE	LENGTH UNDER HEAD	THREAD LENGTH	HEAD HEIGHT	HEAD DIAMETER
UST235999	1/2-13	Socket	3/8	3 1/4	2	0.500	.750
UST236000	1/2-13	Socket	3/8	3 1/2	2	0.500	.750
UST236001	1/2-13	Socket	3/8	3 3/4	2	0.500	.750
UST236002	1/2-13	Socket	3/8	4	2	0.500	.750
UST236003	1/2-13	Socket	3/8	4 1/2	2	0.500	.750
UST236004	1/2-13	Socket	3/8	5	2	0.500	.750
UST236005	1/2-13	Socket	3/8	5 1/2	2	0.500	.750
UST236006	1/2-13	Socket	3/8	6	2	0.500	.750
UST236007	1/2-13	Socket	3/8	6 1/2	2	0.500	.750
UST236008	1/2-13	Socket	3/8	7	2	0.500	.750
UST236009	1/2-13	Socket	3/8	8	2	0.500	.750