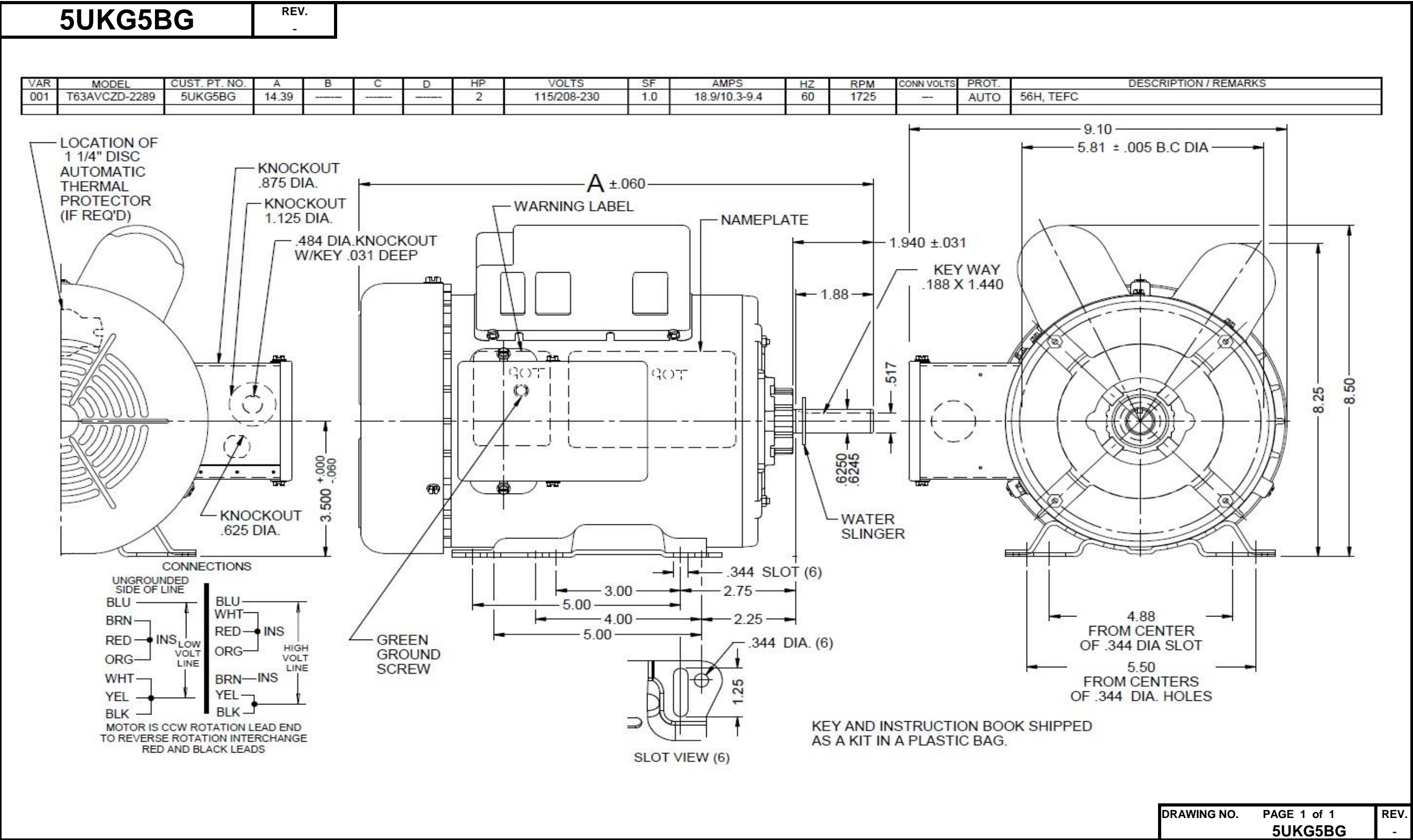


Dimensional Drawing



Performance Data



5UKG5BG

REV.
-

MOTOR PERFORMANCE

HP:	2							
Poles:	4							
No. of Speeds:	1							
Volts:	115/208-230	115	208	230				
HZ:	60	60	60	60				
Service Factor:	1							
Efficiency:	@ Rated Load	79.6	76.3	78.1				
Power Factor:	@ Rated Load	89.8	91.1	89.7				
Amps:	@ No Load							
	@ Rated Load	18.2	10.3	9.3				
	@ Service Factor	18.2	10.3	9.3				
	@ Locked Rotor	109.4	50.6	56.8				
RPM:	@ Rated Load	1734	1714	1735				
Ambient (°C):	40							
Altitude (FASL):								
Torques:	Breakdown	194.1	159.7	200.7				
	Locked Rotor	247.1	183.5	229.4				
	Pull-Up	246.5	183.5	226				
	Rated Load	97.4	97.4	97.4				
	Service Factor	97.4	97.4	97.4				
Watts:	Rated Load	1884	1945	1921				
KVA Code:	H	G	F	H				
Temperature Rise:	@ Rated Load	84.3	99.5	85.7				
	@ Service Factor							
Thermal Protector:	Trip Temp (°C)	175	180.7	182				
Winding Material:	Start (Auxiliary)	Cu	Cu	Cu				
	Run (Main)	Cu	Cu	Cu				
Capacitor(s):	Start (MFD / Volts)	896						
	No. of Start Capacitors							
	Run (MFD / Volts)	60						
	No. of Run Capacitors							

LOW SPEED PERFORMANCE DATA:

HP:								
Poles:								
Volts:								
HZ:								
Efficiency:	@ Rated Load							
Power Factor:	@ Rated Load							
Amps:	@ No Load							
	@ Rated Load							
	@ Service Factor							
	@ Locked Rotor							
Torques:	Bead Down							
	Locked Rotor							
	Pull-Up							
	Rated Load							
	Service Factor							
Watts:	@ Rated Load							
Temperature Rise:	@ Rated Load							
	@ Service Factor							

DRAWING NO. PAGE 1 of 1
5UKG5BG

REV.
-

Dayton Electric Mfg. Co. Lake Forest, IL 60045 USA

Performance Data



5UKG5BG

REV.
-

Dayton Manufacturing Company

Motor Description

Model: T063CZD228901 5UKG5BG
Motor ID: No.1
Poles: 4
Volts: 115/208-230
Frequency: 60
HP: 2
Speed: 1725
Phase: 1
Protector: AUTO

Test Conditions

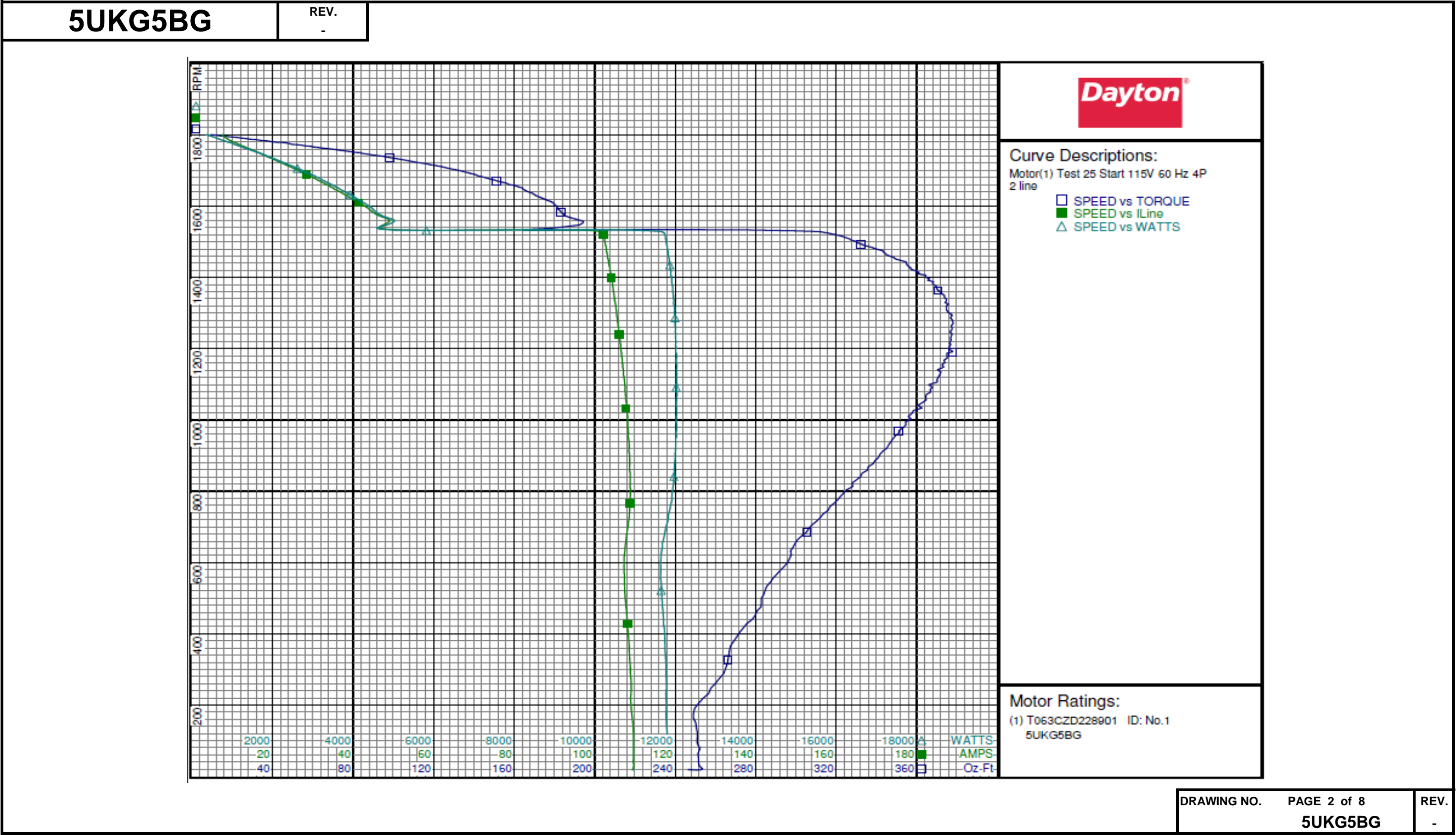
Test Type: Start
Test Number: 25
Poles: 4
Volts: 115
Hz: 60
Rotation:
Special Cond:
Speed Conn: 2 line
TestBoard: Amps Performance Fixture #2
Run Cap: 65 MFD 280V
Start Cap: 896 MFD 110 VOLT
Environment:
Tested: 7/18/2005 7:04:34 PM
Tested By: Taylor, Melvin
Gear Ratio: 1:1
Bearing Friction: -0.48 Oz-Ft
Windage Torque: -2.08 Oz-Ft

Special Points	Vline (V)	Iline (A)	Watts	RPM	Tq (Oz-ft)	HP	Eff (%)	PF (%)
PUT OZ-FT	115.0	109.37	11829	19	247.1	0.057	0.4	94.1
	115.0	109.42	11824	18	246.5	0.054	0.3	94.0
	115.0	109.64	11830	50	251.6	0.150	0.9	93.8
	115.0	109.09	11782	192	249.8	0.569	3.6	93.9
	115.0	108.72	11765	327	266.3	1.038	6.6	94.1
	115.0	107.99	11701	452	279.9	1.506	9.6	94.2
	115.0	107.34	11640	568	290.7	1.965	12.6	94.3
	115.0	107.91	11731	675	303.0	2.433	15.5	94.5
	115.0	108.82	11921	775	320.8	2.961	18.5	95.3
	115.0	108.67	11983	868	335.9	3.471	21.6	95.9
	115.0	108.27	12035	955	349.4	3.971	24.6	96.7
	115.0	107.80	12036	1033	362.7	4.461	27.6	97.1
	115.0	107.46	12036	1106	370.3	4.874	30.2	97.4
	115.0	106.78	12032	1174	375.2	5.242	32.5	98.0
	115.0	106.15	12008	1235	377.3	5.548	34.5	98.4
	115.0	105.48	12001	1293	377.7	5.812	36.1	98.9
	115.0	104.91	11959	1344	373.8	5.980	37.3	99.1
	115.0	104.27	11917	1391	365.4	6.053	37.9	99.4
	115.0	103.60	11871	1435	355.1	6.065	38.1	99.6
	115.0	102.89	11816	1475	343.1	6.023	38.0	99.9
	115.0	102.36	11753	1511	324.9	5.844	37.1	99.8
	115.0	69.53	6942	1532	182.6	3.330	35.8	86.8
	115.0	48.63	4953	1564	190.3	3.542	53.4	88.6
	115.0	43.18	4430	1598	181.2	3.447	58.0	89.2
	115.0	38.80	4003	1626	171.9	3.328	62.0	89.7
	115.0	34.61	3590	1653	162.6	3.200	66.5	90.2
	115.0	30.42	3162	1678	146.5	2.927	69.0	90.4
	115.0	26.36	2744	1700	132.6	2.683	73.0	90.5
	115.0	22.39	2308	1720	114.2	2.338	75.6	89.7
	115.0	18.50	1877	1739	95.5	1.977	78.5	88.2
	115.0	14.61	1422	1759	70.5	1.477	77.5	84.6
	115.0	10.73	945	1778	44.7	0.947	74.7	76.6
	115.0	7.99	507	1795	17.5	0.373	54.9	55.2
	115.0	7.44	359	1800	9.2	0.197	40.8	42.0

DRAWING NO.	PAGE 1 of 8	REV.
5UKG5BG		-

Dayton Electric Mfg. Co. Lake Forest, IL 60045 USA

Performance Data



Performance Data



5UKG5BG

REV.

-

Dayton Manufacturing Company

Motor Description

Model: T063CZD228901 5UKG5BG
Motor ID: No.1
Poles: 4
Volts: 115/208-230
Frequency: 60
HP: 2
Speed: 1725
Phase: 1
Protector: AUTO

Test Conditions

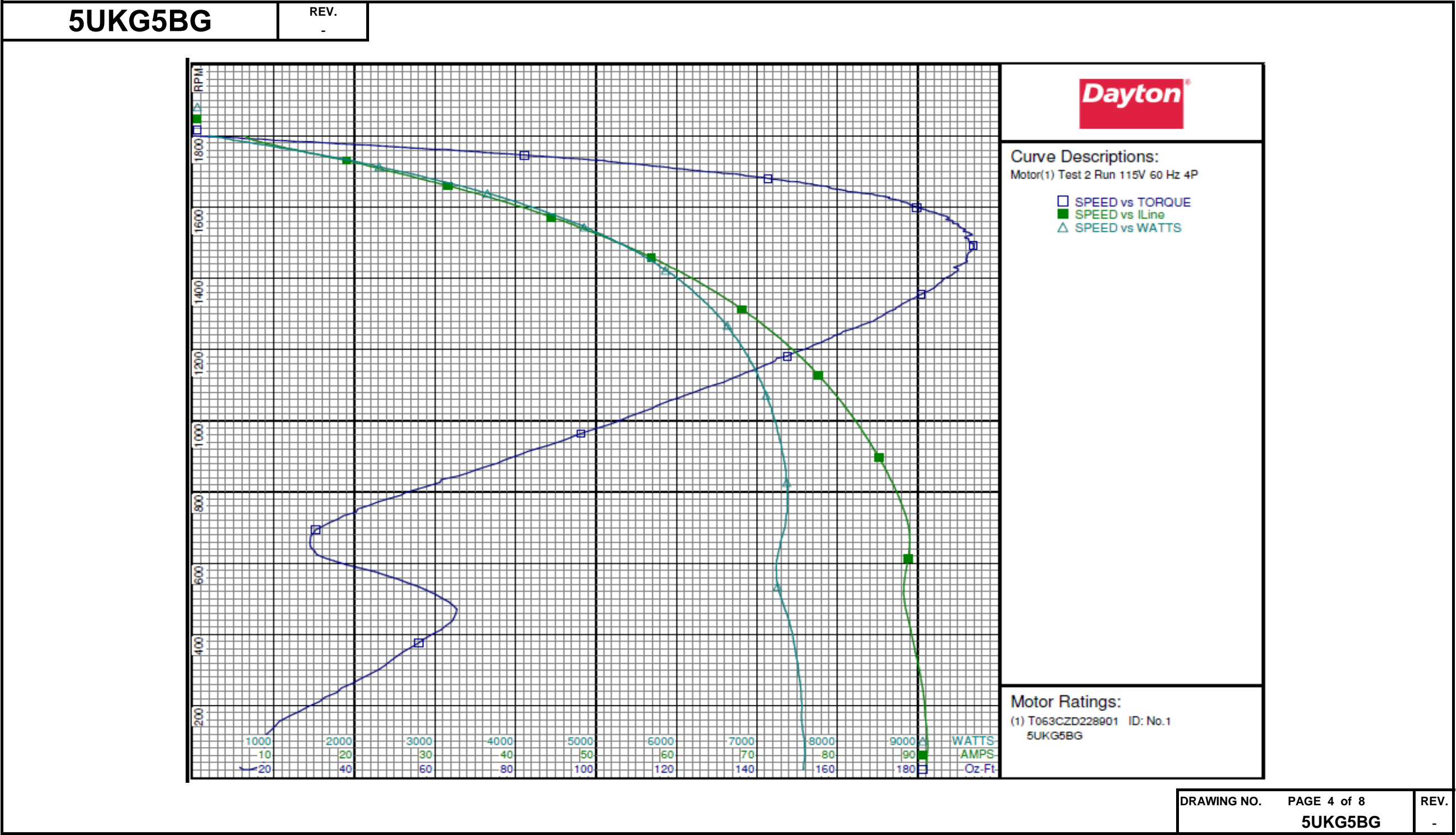
Test Type: Run
Test Number: 2
Poles: 4
Volts: 115
Hz: 60
Rotation:
Special Cond:
Speed Conn:
TestBoard: Amtps Performance Fixture #2
Run Cap: 65 MFD 280V
Start Cap: 896 MFD 110 VOLT
Environment:
Tested: 7/18/2005 10:11:42 PM
Tested By: Taylor, Melvin
Gear Ratio: 1:1
Bearing Friction: 0.00 Oz-Ft
Windage Torque: -1.12 Oz-Ft

Special Points	Vline (V)	Vaux (V)	Vcap (V)	Iline (A)	Imain (A)	Iaux (A)	Watts	RPM	Tq(Oz-ft)	HP	Eff (%)	PF (%)	Cap
	115.0	121.8	173.9	6.44	9.17	3.918	194	1800	0.00	0.000	0.0	26.2	59.8
	115.0	118.8	168.3	7.90	9.16	3.795	583	1785	24.32	0.517	66.1	64.1	59.8
	115.0	118.5	167.4	8.37	9.37	3.774	662	1782	29.57	0.627	70.7	68.8	59.8
	115.0	116.5	163.6	10.76	10.92	3.700	988	1770	48.64	1.025	77.3	79.9	60.0
	115.0	115.8	162.3	11.85	11.75	3.672	1128	1764	56.91	1.195	79.0	82.8	60.0
	115.0	114.1	159.4	14.24	13.75	3.617	1422	1752	73.12	1.525	80.0	86.8	60.2
	115.0	113.1	157.8	15.68	15.04	3.584	1592	1746	82.24	1.709	80.1	88.2	60.3
2 HP	115.0	110.9	154.8	18.15	17.33	3.523	1874	1734	96.87	2.000	79.6	89.8	60.4
97.44 OZ-FT	115.0	110.8	154.7	18.24	17.42	3.521	1884	1734	97.44	2.011	79.6	89.8	60.4
	115.0	109.3	152.9	19.84	18.98	3.486	2057	1726	104.88	2.155	78.2	90.1	60.5
1725 RPM	115.0	109.2	152.8	19.93	19.07	3.484	2067	1725	105.31	2.162	78.1	90.2	60.5
	115.0	107.9	151.3	21.29	20.40	3.454	2212	1718	112.00	2.291	77.3	90.3	60.6
	115.0	106.1	149.0	23.33	22.38	3.414	2436	1707	121.76	2.474	75.8	90.8	60.8
	115.0	105.6	148.5	23.68	22.79	3.403	2482	1704	123.30	2.501	75.2	91.2	60.8
	115.0	101.6	143.9	28.00	27.07	3.313	2939	1680	142.79	2.856	72.5	91.3	61.1
	115.0	97.1	139.1	32.46	31.59	3.213	3393	1654	158.21	3.116	68.5	90.9	61.3
	115.0	92.8	134.6	36.77	35.99	3.121	3823	1627	172.88	3.349	65.3	90.4	61.5
	115.0	88.3	130.6	41.04	40.35	3.038	4231	1598	179.66	3.417	60.2	89.6	61.7
	115.0	83.6	126.6	45.38	44.81	2.956	4630	1565	186.88	3.481	56.1	88.7	61.9
	115.0	79.0	123.1	49.55	49.20	2.876	5000	1529	192.42	3.503	52.3	87.7	62.0
BDT OZ-FT	115.0	75.1	120.0	53.26	53.01	2.812	5328	1495	194.07	3.455	48.4	87.0	62.1
	115.0	74.4	119.8	53.72	53.52	2.803	5358	1491	193.77	3.440	47.9	86.7	62.1
	115.0	69.8	116.8	57.65	57.56	2.736	5680	1450	192.09	3.316	43.5	85.7	62.1
	115.0	65.3	114.4	61.58	61.63	2.681	5982	1404	187.52	3.135	39.1	84.5	62.1
	115.0	60.7	112.3	65.32	65.52	2.638	6250	1355	180.84	2.916	34.8	83.2	62.3
	115.0	56.3	110.5	68.81	69.13	2.595	6490	1302	172.06	2.666	30.6	82.0	62.3
	115.0	52.1	109.1	72.16	72.62	2.567	6700	1244	160.87	2.383	26.5	80.7	62.4
	115.0	47.9	108.1	75.31	75.89	2.542	6889	1181	147.60	2.075	22.5	79.5	62.4
	115.0	43.8	107.4	78.19	78.91	2.516	7037	1114	132.99	1.764	18.7	78.3	62.2
	115.0	39.9	106.8	80.86	81.68	2.504	7166	1041	114.90	1.424	14.8	77.1	62.2
	115.0	35.9	106.4	83.31	84.23	2.493	7264	964	96.32	1.105	11.4	75.8	62.1
	115.0	32.4	106.0	85.56	86.58	2.484	7347	881	75.63	0.793	8.1	74.7	62.1
	115.0	28.7	105.3	87.54	88.69	2.455	7381	790	51.48	0.484	4.9	73.3	61.9
	115.0	23.5	104.4	88.91	90.18	2.421	7337	693	30.32	0.250	2.5	71.8	61.5
	115.0	16.7	106.7	88.65	90.10	2.452	7241	595	38.19	0.270	2.8	71.0	60.9
	115.0	12.0	112.2	88.35	89.90	2.576	7318	491	63.40	0.371	3.8	72.0	60.9
	115.0	11.4	115.3	89.45	91.04	2.642	7459	376	55.94	0.250	2.5	72.5	60.8
	115.0	9.7	116.7	90.59	92.25	2.656	7543	249	36.79	0.109	1.1	72.4	60.4
	115.0	7.6	118.4	91.15	92.85	2.693	7580	115	17.79	0.024	0.2	72.3	60.3
	115.0	120.4	171.3	6.89	8.94	3.860	373	1794	11.49	0.245	49.0	47.0	59.8
	115.0	7.3	119.3	91.04	92.77	2.711	7578	27	11.49	0.004	0.0	72.4	60.3

DRAWING NO. PAGE 3 of 8 REV.
5UKG5BG -

Dayton Electric Mfg. Co. Lake Forest, IL 60045 USA

Performance Data



Performance Data



5UKG5BG

REV.
-

Dayton Manufacturing Company

Motor Description

Model: T063CZD228901 5UKG5BG
Motor ID: No.1
Poles: 4
Volts: 115/203-230
Frequency: 60
HP: 2
Speed: 1725
Phase: 1
Protector: AUTO

Test Conditions

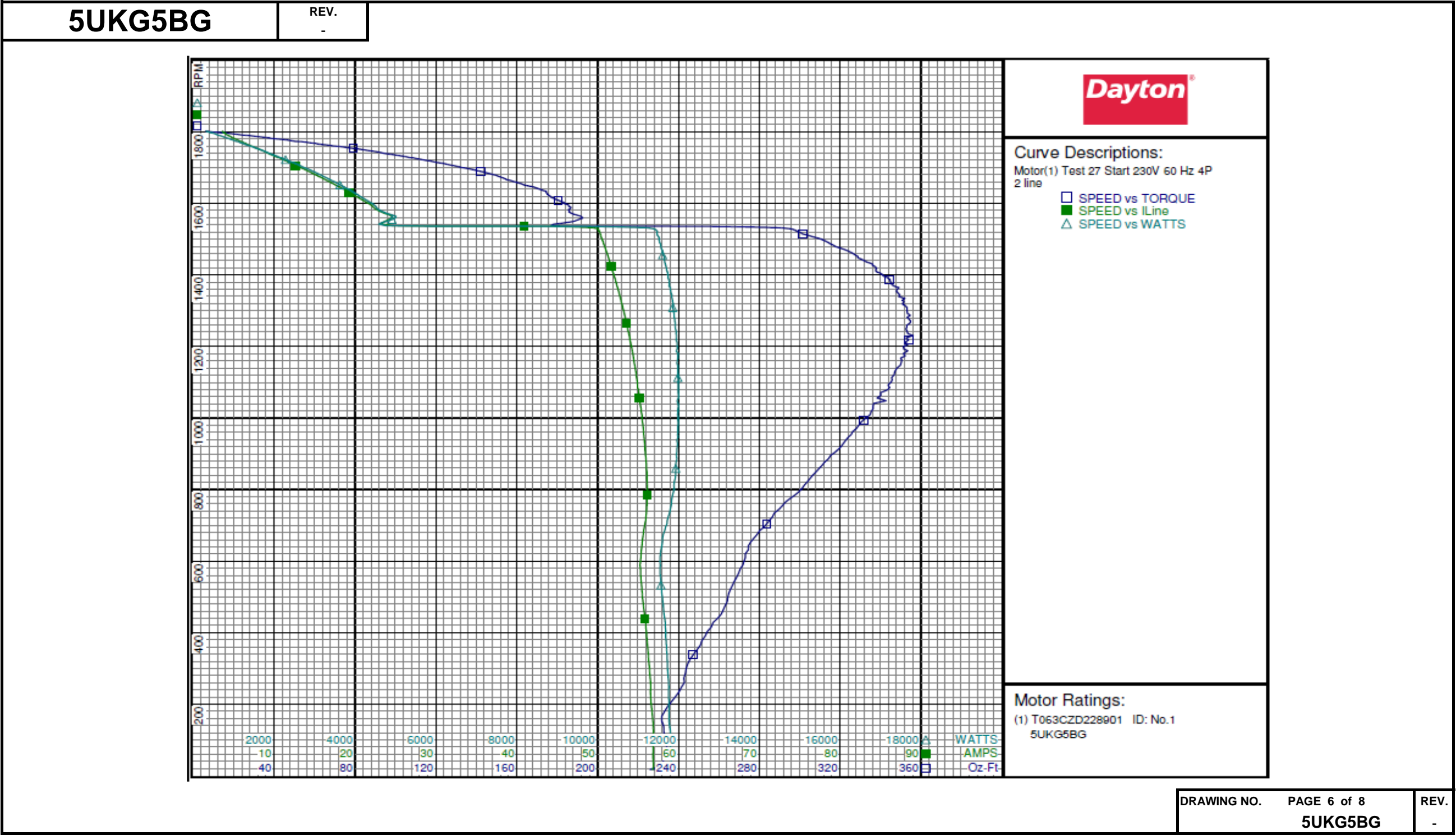
Test Type: Start
Test Number: 27
Poles: 4
Volts: 230
Hz: 60
Rotation:
Special Cond:
Speed Conn: 2 line
TestBoard: Amtps Performance Fixture #2
Run Cap: 65 MFD 280V
Start Cap: 896 MFD 110 VOLT
Environment:
Tested: 7/18/2005 7:38:42 PM
Tested By: Taylor, Melvin
Gear Ratio: 1:1
Bearing Friction: -0.64 Oz-Ft
Windage Torque: -2.40 Oz-Ft

Special Points	Vline (V)	Iline (A)	Watts	RPM	Tq (Oz-ft)	HP	Eff (%)	PF (%)
PUT OZ-FT	230.0	56.81	11812	19	229.4	0.052	0.3	90.4
	230.0	56.83	11796	17	226.0	0.046	0.3	90.3
	230.0	56.85	11815	49	233.2	0.136	0.9	90.4
	230.0	56.66	11769	194	234.7	0.541	3.4	90.3
	230.0	56.30	11719	326	245.8	0.953	6.1	90.5
	230.0	55.80	11640	452	261.2	1.404	9.0	90.7
	230.0	55.32	11544	566	269.8	1.818	11.7	90.7
	230.0	55.64	11625	674	278.9	2.238	14.4	90.8
	230.0	56.12	11839	775	295.3	2.724	17.2	91.7
	230.0	56.04	11931	868	311.2	3.214	20.1	92.6
	230.0	55.71	11978	953	325.5	3.694	23.0	93.5
	230.0	55.31	11998	1033	336.3	4.136	25.7	94.3
	230.0	54.87	11994	1106	345.7	4.552	28.3	95.0
	230.0	54.40	11986	1173	352.2	4.917	30.6	95.8
	230.0	53.87	11941	1235	353.6	5.198	32.5	96.4
	230.0	53.31	11896	1292	353.3	5.435	34.1	97.0
	230.0	52.72	11838	1344	349.5	5.590	35.2	97.6
	230.0	52.10	11741	1392	343.3	5.690	36.1	98.0
	230.0	51.53	11661	1435	333.2	5.694	36.4	98.4
	230.0	50.94	11570	1475	319.9	5.617	36.2	98.7
	230.0	50.38	11477	1511	303.6	5.461	35.5	99.0
	230.0	35.94	7321	1535	210.1	3.840	39.1	88.6
	230.0	24.42	4963	1565	190.7	3.553	53.4	88.4
	230.0	21.73	4432	1599	183.6	3.494	58.8	88.7
	230.0	19.49	4004	1627	175.1	3.392	63.2	89.3
	230.0	17.33	3592	1654	162.3	3.196	66.4	90.1
	230.0	15.25	3164	1678	149.5	2.987	70.4	90.2
	230.0	13.20	2739	1699	133.0	2.690	73.2	90.2
	230.0	11.29	2331	1719	115.1	2.357	75.4	89.8
	230.0	9.27	1885	1739	94.4	1.954	77.3	88.4
	230.0	7.32	1435	1759	72.1	1.510	78.5	85.2
	230.0	5.42	957	1777	45.3	0.959	74.8	76.7
	230.0	3.96	513	1795	18.4	0.392	57.1	56.4
	230.0	3.59	323	1802	6.1	0.130	30.0	39.2

DRAWING NO. PAGE 5 of 8 REV.
5UKG5BG -

Dayton Electric Mfg. Co. Lake Forest, IL 60045 USA

Performance Data



Performance Data



5UKG5BG

REV.
-

Dayton Manufacturing Company

Motor Description

Model: T063CZD228901 5UKG5BG
Motor ID: No.1
Poles: 4
Volts: 115/208-230
Frequency: 60
HP: 2
Speed: 1725
Phase: 1
Protector: AUTO

Test Conditions

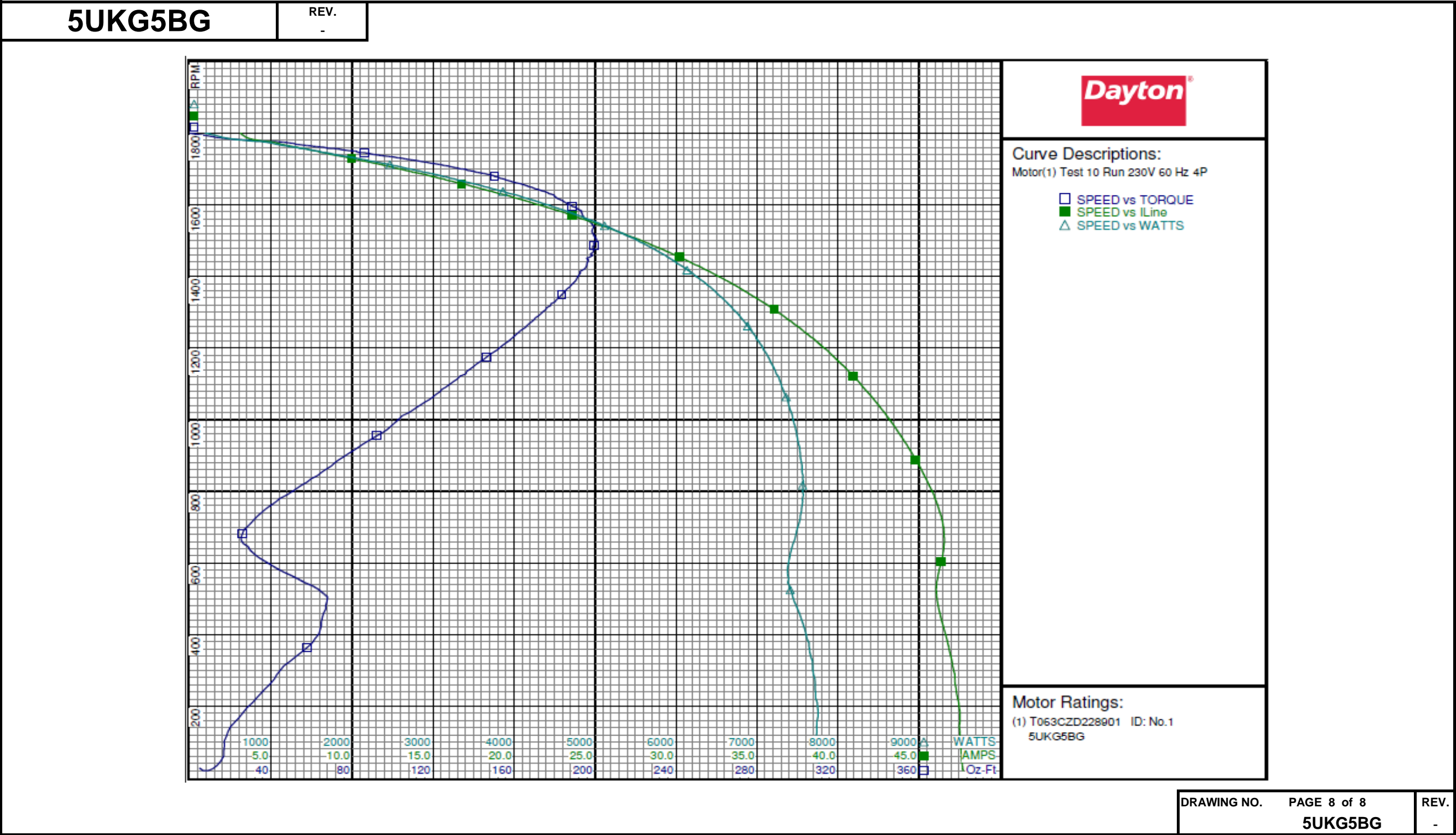
Test Type: Run
Test Number: 10
Poles: 4
Volts: 230
Hz: 60
Rotation:
Special Cond:
Speed Conn:
TestBoard: Amps Performance Fixture #2
Run Cap: 65 MFD 280V
Start Cap: 896 MFD 110 VOLT
Environment:
Tested: 7/18/2005 9:06:37 PM
Tested By: Taylor, Melvin
Gear Ratio: 1:1
Bearing Friction: 0.00 Oz-Ft
Windage Torque: -1.28 Oz-Ft

Special Points	Vline (V)	Vaux (V)	Vcap (V)	Iline (A)	Imain (A)	Iaux (A)	Watts	RPM	Tq (Oz-ft)	HP	Eff (%)	PF (%)	Cap
	230.0	120.8	172.3	3.11	6.14	3.877	192	1799	0.0	0.000	0.0	26.7	59.7
	230.0	118.4	167.3	3.91	5.75	3.765	579	1781	24.3	0.516	66.4	64.4	59.7
	230.0	118.0	166.5	4.09	5.73	3.747	644	1780	27.9	0.591	68.5	68.4	59.7
	230.0	116.6	162.8	5.31	6.03	3.672	982	1772	48.6	1.026	77.9	80.4	59.8
	230.0	115.4	160.7	6.20	6.52	3.631	1199	1763	60.2	1.263	78.6	84.1	59.9
	230.0	114.1	158.5	7.18	7.14	3.585	1435	1755	73.1	1.528	79.4	87.0	60.0
	230.0	112.4	155.9	8.26	7.97	3.537	1686	1745	85.9	1.785	79.0	88.7	60.2
97.44 OZ-FT	230.0	110.7	153.8	9.31	8.82	3.493	1921	1735	97.4	2.012	78.1	89.7	60.2
2 HP	230.0	110.7	153.8	9.26	8.78	3.494	1910	1735	96.8	2.000	78.1	89.7	60.2
1725 RPM	230.0	109.2	151.5	10.35	9.75	3.445	2157	1725	108.8	2.235	77.3	90.6	60.3
	230.0	109.2	151.4	10.40	9.80	3.443	2168	1725	109.3	2.245	77.3	90.6	60.3
	230.0	108.8	151.0	10.58	9.95	3.434	2203	1723	112.0	2.297	77.8	90.6	60.3
	230.0	106.9	148.6	11.62	10.92	3.388	2429	1713	121.8	2.483	76.3	90.9	60.5
	230.0	105.1	146.5	12.65	11.91	3.346	2646	1702	131.5	2.665	75.1	91.0	60.6
	230.0	101.0	141.6	14.93	14.15	3.244	3123	1679	150.4	3.006	71.8	91.0	60.8
	230.0	96.9	137.1	17.24	16.48	3.149	3590	1653	165.9	3.264	67.8	90.5	60.9
	230.0	92.4	132.3	19.55	18.85	3.051	4042	1626	179.8	3.480	64.2	89.9	61.2
	230.0	87.8	128.3	21.83	21.22	2.963	4462	1595	188.7	3.583	59.9	88.9	61.3
	230.0	83.4	124.2	24.08	23.59	2.879	4881	1562	194.6	3.618	55.3	88.1	61.5
	230.0	78.7	120.4	26.31	25.94	2.796	5268	1526	198.4	3.605	51.1	87.1	61.6
BDT OZ-FT	230.0	75.5	117.8	27.86	27.58	2.741	5526	1499	200.7	3.582	48.4	86.2	61.7
	230.0	74.2	116.7	28.48	28.24	2.717	5632	1487	199.7	3.536	46.8	86.0	61.7
	230.0	69.4	113.7	30.60	30.49	2.650	5955	1445	196.6	3.383	42.4	84.6	61.8
	230.0	64.7	111.0	32.66	32.67	2.582	6253	1398	191.4	3.187	38.0	83.3	61.7
	230.0	60.2	108.5	34.59	34.74	2.536	6521	1349	183.7	2.949	33.7	82.0	62.0
	230.0	56.0	106.8	36.41	36.68	2.486	6760	1296	173.4	2.674	29.5	80.7	61.8
	230.0	51.6	105.2	38.13	38.53	2.450	6963	1238	161.1	2.374	25.4	79.4	61.8
	230.0	47.4	104.0	39.76	40.28	2.425	7139	1174	146.5	2.048	21.4	78.1	61.8
	230.0	43.2	103.2	41.26	41.90	2.411	7285	1107	130.2	1.715	17.6	76.8	62.0
	230.0	39.5	102.6	42.61	43.37	2.392	7401	1034	111.9	1.377	13.9	75.5	61.8
	230.0	35.6	102.1	43.88	44.74	2.381	7492	955	92.3	1.049	10.4	74.2	61.8
	230.0	32.2	101.6	45.04	46.00	2.363	7557	870	69.6	0.720	7.1	72.9	61.7
	230.0	28.1	100.6	45.99	47.07	2.347	7562	779	44.3	0.411	4.1	71.5	61.9
	230.0	23.5	99.6	46.56	47.72	2.314	7485	683	25.9	0.211	2.1	69.9	61.6
	230.0	16.6	101.9	46.27	47.60	2.357	7376	584	42.8	0.297	3.0	69.3	61.3
	230.0	11.7	107.5	46.19	47.64	2.474	7483	481	67.0	0.384	3.8	70.4	61.0
	230.0	10.9	110.6	46.84	48.30	2.532	7644	364	57.9	0.251	2.4	71.0	60.7
	230.0	9.0	112.1	47.33	48.93	2.544	7723	236	34.9	0.098	0.9	71.0	60.2
	230.0	7.4	114.4	47.53	49.21	2.594	7733	102	16.8	0.020	0.2	70.7	60.2
	230.0	120.4	171.5	3.21	6.03	3.856	270	1795	4.6	0.098	27.1	36.7	59.6

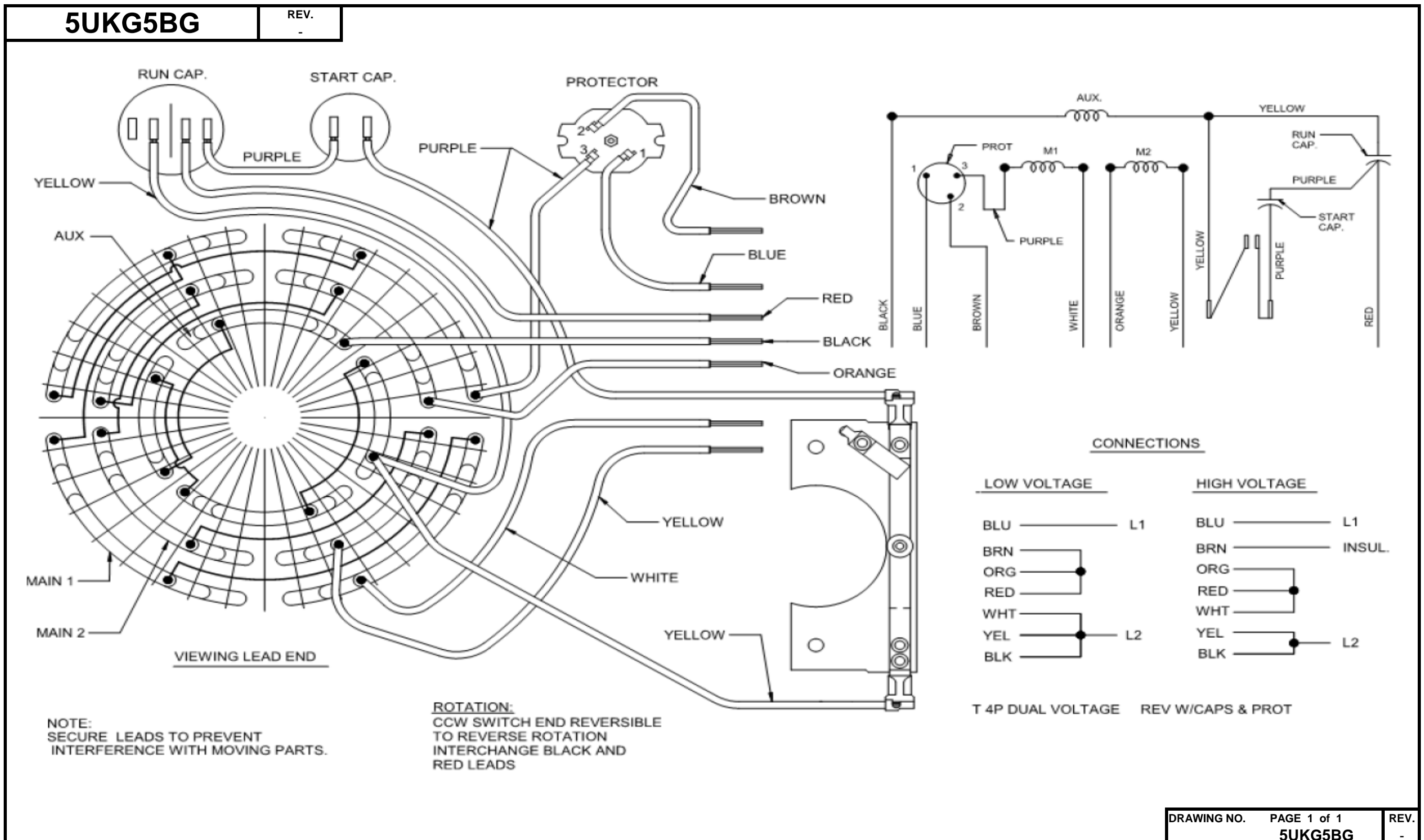
DRAWING NO. PAGE 7 of 8 REV.
5UKG5BG -

Dayton Electric Mfg. Co. Lake Forest, IL 60045 USA

Performance Data



Wiring Diagram



Dayton®**INDUSTRIAL MOTOR****HP: 2****VOLTS: 115/208-230****AMPS: 18.9/10.3-9.4****RPM: 1725****DUTY: CONT****SF: 1.0****KVA CODE: H****ENCL: TEFC****THERMALLY PROTECTED: AUTO**MFG. NO. PROT. CODE: 08011 **MTR REF: T63AVCZD-2289****PH: 1****HZ: 60****FR: 56H****INS CL: F****AMB: 40 °C****SFA:**AVG. F.L.
EFF. 81.5Part
No **5UKG5BG****Disconnect Power Before Making
Any Electrical Connections or Changes****CONNECTIONS**UNGROUND
SIDE OF LINE

BLU ———

BRN ———

RED —●— INS

ORG ———

WHT ———

YEL —●—

BLK ———

—————

BLU ———

WHT ———

RED —●— INS

ORG ———

BRN — INS

YEL —●—

BLK ———

—————

BLU ———

WHT ———

RED —●— INS

ORG ———

BRN — INS

YEL —●—

BLK ———

LOW
VOLT
LINEHIGH
VOLT
LINE**MOTOR IS CCW ROTATION LEAD END
TO REVERSE ROTATION INTERCHANGE
RED AND BLACK LEADS****Mfd for Dayton Electric Mfg. Co., Lake Forest, IL 60045 USA****Made in Mexico**