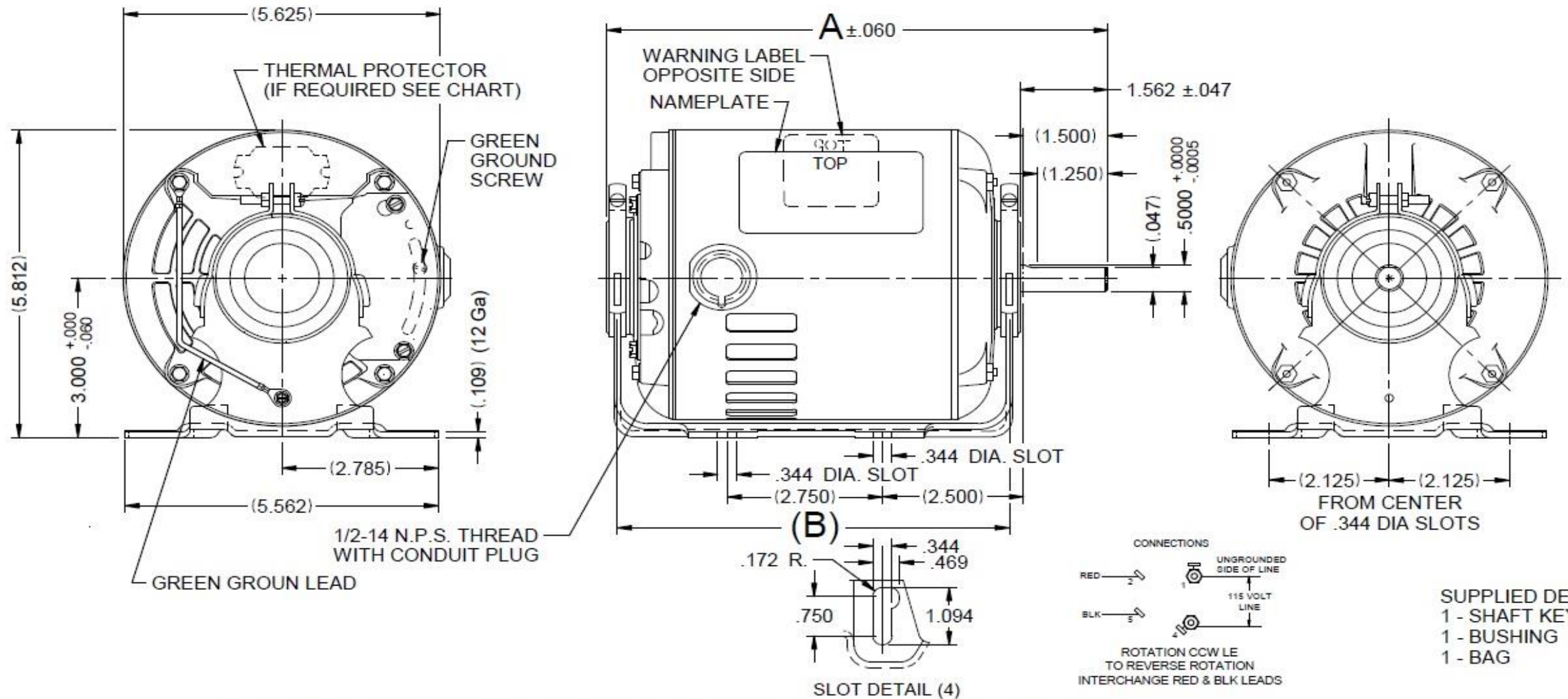


Dimensional Drawing

5K907BG

REV.
-

VAR	MODEL	CUST. PT. NO.	A	B	C	D	HP	VOLTS	SF	AMPS	HZ	RPM	CONN VOLTS	PROT.	DESCRIPTION / REMARKS
001	S55JXSFA-8465	5K907BG	8.933	6.578	-----	-----	1/4	115	1.35	5.3	60	1725	---	AUTO	48, ODP, AUTO



ROTATION IS CCW SWITCH END, TO REVERSE ROTATION INTERCHANGE RED & BLACK LEADS

DRAWING NO.	PAGE 1 of 1	REV.
	5K907BG	-

Performance Data



5K907BG

REV.
-

SPLIT-PHASE & CAPACITOR START MOTOR PERFORMANCE

HP:	1/4						
Poles:	4						
Ambient (°C):	40						
Altitude (FASL):							
No. of Speeds:	1						
Volts:	115	115					
HZ:	60	60					
Service Factor:	1.35						
Efficiency:	@ Rated Load	48.1					
Power Factor:	@ Rated Load	62.8					
Amps:	@ No Load						
	@ Rated Load	5.4					
	@ Service Factor	5.8					
	@ Locked Rotor				23.7		
RPM:	@ Rated Load				1720		
Torques:	Breakdown	28					
	Locked Rotor	13.8					
	Pull-Up	12.5					
	Rated Load	12.2					
	Service Factor	16.4					
Watts:	Rated Load	387					
KVA Code:	M	M					
Temperature Rise:	@ Rated Load	49					
	@ Service Factor	52					
Thermal Protector:	Trip Temp (°C)	130					
Winding Material:	Start (Auxiliary)	Al					
	Run (Main)	Al					
Capacitor(s):	Start (MFD / Volts)				NA		
	No. of Start Capacitors						
	Run (MFD / Volts)				NA		
	No. of Run Capacitors						

LOW SPEED PERFORMANCE DATA:

HP:							
Poles:							
Volts:							
HZ:							
Efficiency:	@ Rated Load						
Power Factor:	@ Rated Load						
Amps:	@ No Load						
	@ Rated Load						
	@ Service Factor						
	@ Locked Rotor						
Torques:	BreakDown						
	Locked Rotor						
	Pull-Up						
	Rated Load						
	Service Factor						
Watts:	@ Rated Load						
Temperature Rise:	@ Rated Load						
	@ Service Factor						

DRAWING NO. PAGE 1 of 1 REV.
5K907BG -

Dayton Electric Mfg. Co. Lake Forest, IL 60045 USA

Performance Data



5K907BG

REV.

-

Dayton Manufacturing Company

Motor Description

Model: S055SFA8465 5K907BG
 Motor ID:
 Poles: 4
 Volts: 115
 Frequency: 60
 HP: 1/4
 Speed: 1725
 Phase: 1
 Protector: 20MCA6LD

Test Conditions

Test Type: Start
 Test Number: 6
 Poles: 4
 Volts: 115
 Hz: 60
 Rotation:
 Special Cond: 3-Line
 Speed Conn:
 TestBoard: Amps Performance Fixture #4
 Run Cap: 0
 Start Cap: 0µfd
 Environment:
 Tested: 9/8/2010 1:57:11 PM
 Tested By: Sharp, Gerald
 Gear Ratio: 1:1
 Bearing Friction: -0.40 Oz-Ft
 Windage Torque: -2.29 Oz-Ft

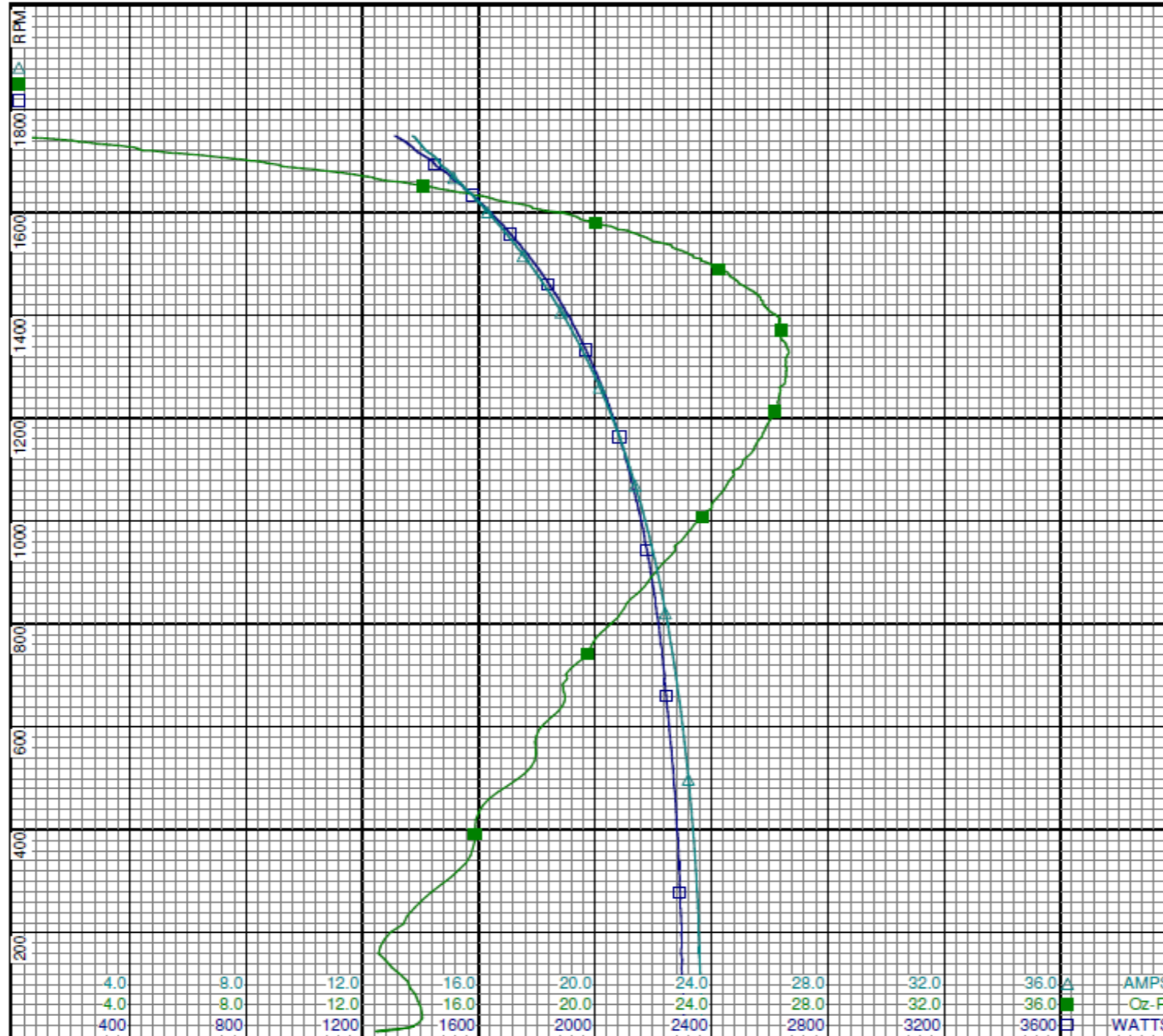
Special Points	Vline (V)	Iline (A)	Imain (A)	Iaux (A)	Watts	RPM	Tq (Oz-ft)	HP	Eff (%)	PF (%)
PUT OZ-FT	115.0	23.70	16.532	7.570	2309	17	13.76	0.003	0.1	84.7
	115.0	23.69	16.535	7.561	2309	8	12.47	0.001	0.0	84.7
	115.0	23.66	16.517	7.537	2306	23	13.91	0.004	0.1	84.8
	115.0	23.60	16.522	7.426	2300	146	12.80	0.022	0.7	84.8
	115.0	23.49	16.488	7.282	2290	294	14.73	0.052	1.7	84.8
	115.0	23.32	16.388	7.149	2279	434	16.01	0.083	2.7	85.0
	115.0	23.10	16.250	7.008	2262	559	17.96	0.119	3.9	85.1
	115.0	22.85	16.081	6.874	2242	671	18.91	0.151	5.0	85.3
	115.0	22.58	15.860	6.781	2224	773	20.04	0.184	6.2	85.7
	115.0	22.28	15.622	6.679	2202	866	21.60	0.223	7.5	86.0
	115.0	21.94	15.357	6.576	2175	952	22.74	0.258	8.8	86.2
	115.0	21.58	15.070	6.479	2146	1032	24.02	0.295	10.3	86.5
	115.0	21.19	14.761	6.394	2114	1104	24.99	0.329	11.6	86.7
	115.0	20.80	14.440	6.324	2080	1170	25.77	0.359	12.9	87.0
	115.0	20.37	14.084	6.270	2043	1231	26.27	0.385	14.1	87.2
	115.0	19.94	13.719	6.236	2005	1287	26.56	0.407	15.1	87.4
	115.0	19.51	13.339	6.219	1965	1337	26.58	0.423	16.1	87.6
	115.0	19.07	12.959	6.222	1922	1383	26.33	0.434	16.8	87.6
	115.0	18.63	12.554	6.246	1880	1427	25.77	0.438	17.4	87.8
	115.0	18.18	12.143	6.283	1836	1465	24.92	0.435	17.7	87.8
	115.0	17.75	11.740	6.340	1794	1500	23.95	0.427	17.8	87.9
	115.0	17.32	11.324	6.412	1748	1531	22.66	0.413	17.6	87.8
	115.0	16.91	10.926	6.495	1704	1561	21.25	0.395	17.3	87.6
	115.0	16.49	10.509	6.591	1659	1588	19.45	0.368	16.5	87.4
	115.0	16.12	10.124	6.691	1617	1613	17.71	0.340	15.7	87.3
	115.0	15.74	9.707	6.809	1573	1636	15.67	0.305	14.5	86.9
	115.0	15.36	9.316	6.907	1529	1658	13.44	0.265	12.9	86.6
	115.0	15.02	8.936	7.026	1488	1677	11.19	0.223	11.2	86.1
	115.0	14.65	8.522	7.164	1445	1696	8.70	0.176	9.1	85.8
	115.0	14.29	7.999	7.355	1393	1716	5.38	0.110	5.9	84.8
	115.0	13.99	7.669	7.462	1357	1732	2.97	0.061	3.4	84.3
	115.0	13.72	7.192	7.637	1311	1748	0.00	0.000	0.0	83.1

DRAWING NO. PAGE 1 of 4 REV.
5K907BG -

Performance Data



5K907BG REV. -



Dayton

Curve Descriptions:
 Motor(1) Test 6 Start 115V 60 Hz 4P 3-Line
 □ SPEED vs WATTS
 ■ SPEED vs TORQUE
 △ SPEED vs ILine

Motor Ratings:
 (1) S055SFA8465 5K907BG

DRAWING NO. PAGE 2 of 4 REV.
 5K907BG -

Dayton Electric Mfg. Co. Lake Forest, IL 60045 USA

Performance Data



5K907BG REV.
-

Dayton Manufacturing Company

Motor Description

Model: S055SFA8465 5K907BG
 Motor ID:
 Poles: 4
 Volts: 115
 Frequency: 60
 HP: 1/4
 Speed: 1725
 Phase: 1
 Protector: 20MCA6LD

Test Conditions

Test Type: Run Run Cap: 0
 Test Number: 4 Start Cap: 0µfd
 Poles: 4 Environment:
 Volts: 115 Tested: 9/8/2010 1:56:13 PM
 Hz: 60 Tested By: Sharp, Gerald
 Rotation: Gear Ratio: 1:1
 Special Cond: Bearing Friction: -0.26 Oz-Ft
 Speed Conn: Windage Torque: -2.12 Oz-Ft
 TestBoard: Amps Performance Fixture #4

Special Points	Vline (V)	Iline (A)	Watts	RPM	Tq(Oz-ft)	HP	Eff (%)	PF (%)
	115.0	4.838	170.9	1780	0.00	0.000	0.0	30.7
	115.0	4.751	224.8	1765	3.52	0.074	24.6	41.1
	115.0	4.829	295.7	1749	7.87	0.164	41.4	53.3
	115.0	5.186	366.0	1730	11.23	0.231	47.2	61.4
12.2 OZ-FT	115.0	5.362	387.4	1720	12.20	0.250	48.1	62.8
	115.0	5.599	445.0	1709	15.13	0.308	51.6	69.1
16.4 OZ-FT	115.0	5.771	476.0	1702	16.40	0.332	52.1	71.7
	115.0	6.188	529.0	1687	18.33	0.368	51.9	74.3
	115.0	6.811	617.7	1660	21.60	0.427	51.6	78.9
	115.0	7.524	702.6	1631	23.95	0.465	49.4	81.2
	115.0	8.268	784.1	1599	25.77	0.491	46.7	82.5
	115.0	9.009	862.9	1565	27.03	0.504	43.5	83.3
	115.0	9.772	939.1	1525	27.71	0.503	40.0	83.6
	115.0	10.504	1010.8	1483	27.70	0.489	36.1	83.7
BDT OZ-FT	115.0	10.726	1040.3	1472	28.03	0.491	35.2	84.3
	115.0	11.210	1076.6	1436	27.42	0.469	32.5	83.5
	115.0	11.863	1133.1	1387	26.54	0.438	28.9	83.1
	115.0	12.467	1184.1	1334	25.36	0.403	25.4	82.6
	115.0	13.019	1227.8	1278	23.95	0.364	22.1	82.0
	115.0	13.527	1266.6	1218	22.32	0.324	19.1	81.4
	115.0	13.997	1301.9	1154	20.60	0.283	16.2	80.9
	115.0	14.421	1331.5	1085	18.67	0.241	13.5	80.3
	115.0	14.804	1356.7	1012	16.69	0.201	11.1	79.7
	115.0	15.151	1379.9	933	14.63	0.163	8.8	79.2
	115.0	15.464	1398.2	850	12.57	0.127	6.8	78.6
	115.0	15.739	1414.2	758	10.30	0.093	4.9	78.1
	115.0	15.978	1426.9	664	8.15	0.064	3.4	77.7
	115.0	16.162	1436.7	562	6.39	0.043	2.2	77.3
	115.0	16.299	1444.1	454	4.79	0.026	1.3	77.0
	115.0	16.422	1451.4	336	3.43	0.014	0.7	76.9
	115.0	16.491	1454.2	212	1.15	0.003	0.1	76.7
	115.0	16.517	1455.5	87	1.23	0.001	0.1	76.6

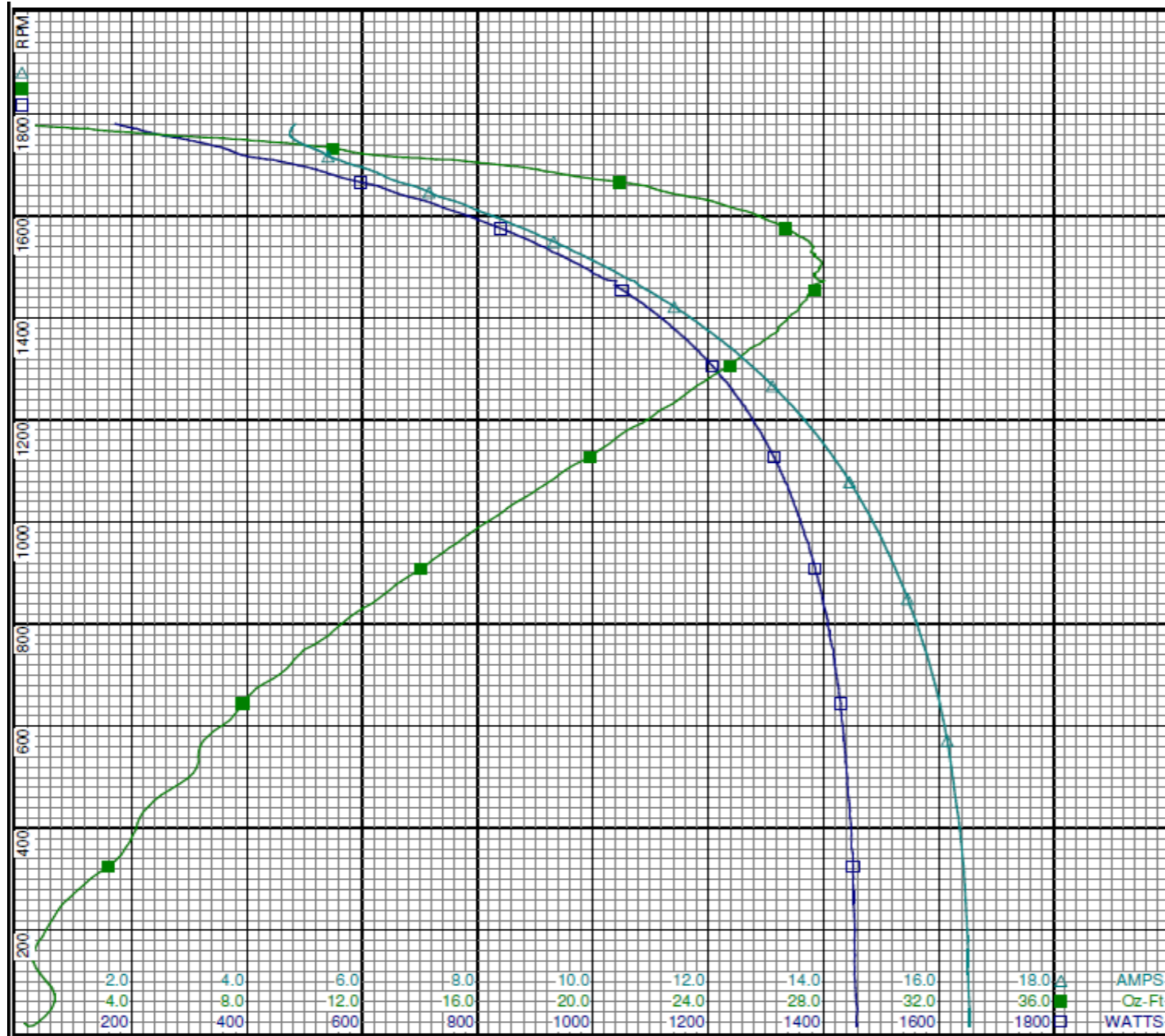
DRAWING NO. PAGE 3 of 4 REV.
5K907BG -

Dayton Electric Mfg. Co. Lake Forest, IL 60045 USA

Performance Data



5K907BG REV. -



Dayton

Curve Descriptions:
Motor(1) Test 4 Run 115V 60 Hz 4P

- SPEED vs WATTS
- SPEED vs TORQUE
- △ SPEED vs ILine

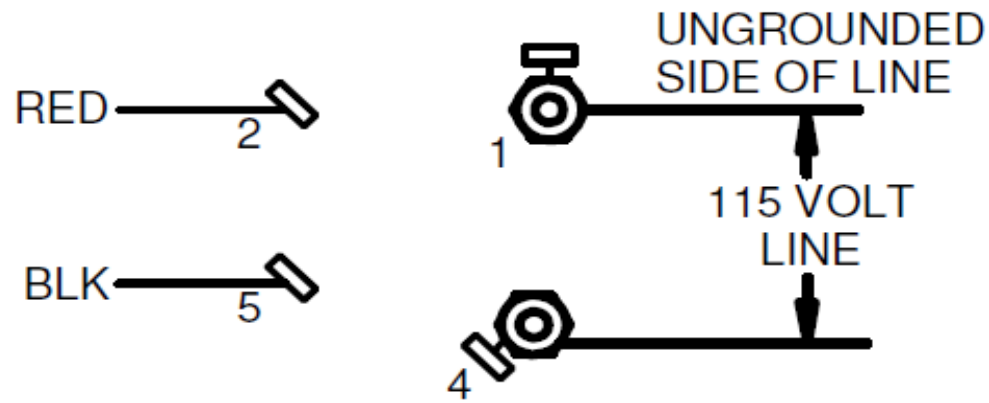
Motor Ratings:
(1) S055SFA8465 5K907BG

DRAWING NO. PAGE 4 of 4 REV. -
5K907BG

Dayton Electric Mfg. Co. Lake Forest, IL 60045 USA

5K907BG	REV. -
---------	-----------

CONNECTIONS

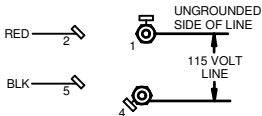


ROTATION CCW LE
TO REVERSE ROTATION
INTERCHANGE RED & BLK LEADS

DRAWING NO.	PAGE 1 of 1	REV.
5K907BG		-

Dayton[®]

BELT DRIVE FAN & BLOWER MOTOR

HP: 1/4
VOLTS: 115**AMPS:** 5.3**RPM:** 1725**DUTY:** CONT**SF:** 1.35**KVA CODE:** M**ENCL:** ODP**THERMALLY PROTECTED:** AUTOMFG. NO. PROT. CODE: 04050 **MTR REF:** S55JXSFA-8465**PH:** 1
HZ: 60
FR: 48
INS CL: B
AMB: 40 °C
SFA: 5.9AVG. F.L.
EFF.Part
No **5K907BG****Disconnect Power Before Making Any
Electrical Connections or Changes****CONNECTIONS****ROTATION CCW LE
TO REVERSE ROTATION
INTERCHANGE RED & BLK LEADS**

E37403



258501

Mfd for Dayton Electric Mfg. Co., Lake Forest, IL 60045 USA

Made in Mexico