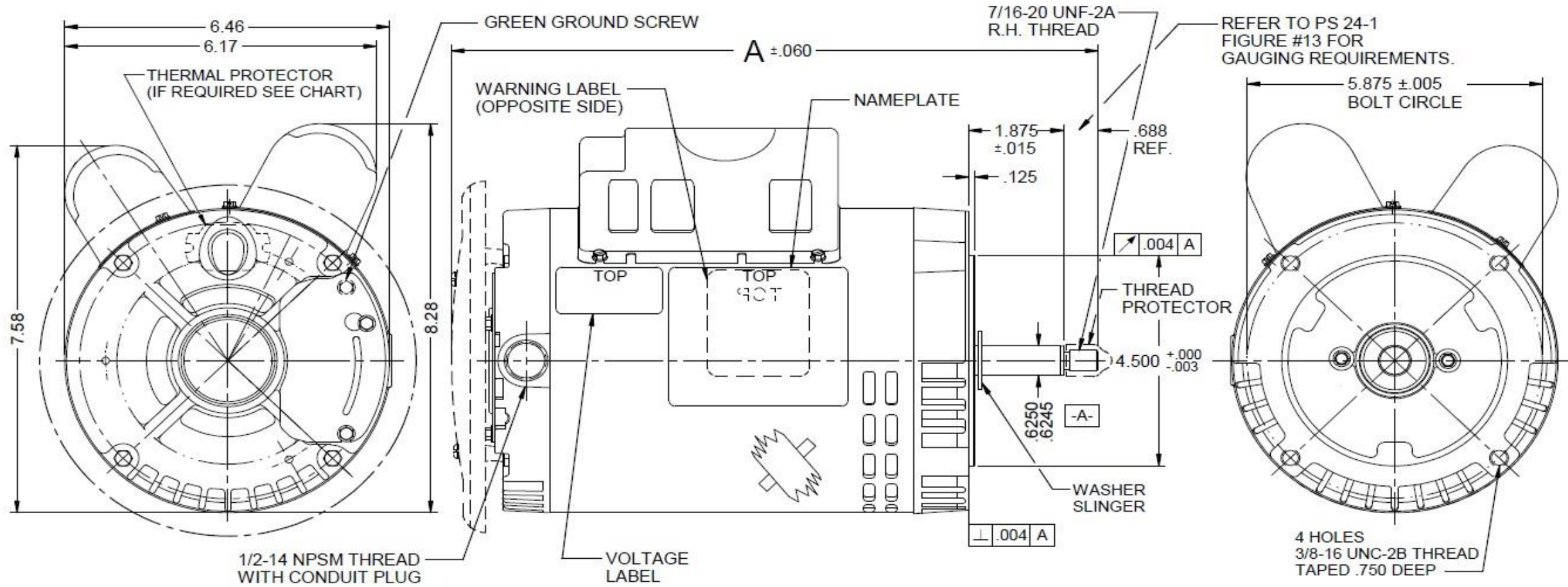


Dimensional Drawing

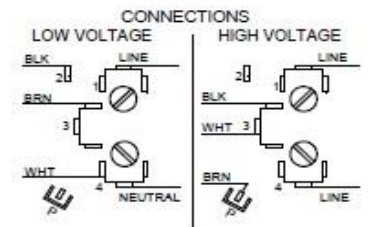


5K476BG REV. -

VAR	MODEL	CUST. PT. NO.	A	B	C	D	HP	VOLTS	SF	AMPS	HZ	RPM	CONN VOLTS	PROT.	DESCRIPTION / REMARKS
001	T63CXCLR-2286	5K476BG	13.094	---	---	---	2.0	115/208-230	1.2	19.6/10.7-9.8	60	3450	230	AUTO	56C,CAP START CAP RUN DRIP COVER, BLACK



NOTE:
DRIP COVER SHIPPED
DETACHED IN KIT ASM



MOTOR IS NON-REVERSIBLE
CCW ROTATION SHAFT END
SUPPLY CONNECTIONS, USE WIRES SIZED
ON THE BASIS OF 80°C AMPACITY AND
RATED MINIMUM 90°C

SHAFT KEY TAPED TO MOTOR

DRAWING NO. PAGE 1 of 1 REV.
5K476BG -

Performance Data



5K476BG	REV. -
----------------	-----------

MOTOR PERFORMANCE

HP:	2						
Poles:	2						
No. of Speeds:	1						
Volts:	115/208-230	115	208	230			
HZ:	60	60	60	60			
Service Factor:	1.2						
Efficiency:	@ Rated Load	78.0	77.8	78.6			
Power Factor:	@ Rated Load	92.5	94.0	92.0			
Amps:	@ No Load						
	@ Rated Load	18.2	9.8	9.1			
	@ Service Factor	21.6	12	10.8			
	@ Locked Rotor	121.4	45.1	51.9			
RPM:	@ Rated Load	3494	3463	3491			
Ambient (°C):	40						
Altitude (FASL):							
Torques:	Breakdown	112.6	90.6	112.8			
	Locked Rotor	20.9	49	55.5			
	Pull-Up	18.7	46.6	54.9			
	Rated Load	48.7	48.7	48.7			
	Service Factor	58.4	58.4	58.4			
Watts:	Rated Load	1938	1924	1922			
KVA Code:	H	H	E	G			
Temperature Rise:	@ Rated Load	54.7	62.6	51.4			
	@ Service Factor	NA	67	NA			
Thermal Protector:	Trip Temp (°C)	129.3	154.5	151.4			
Winding Material:	Start (Auxiliary)	Cu	Cu	Cu			
	Run (Main)	Al	Al	Al			
Capacitor(s):	Start (MFD / Volts)	208					
	No. of Start Capacitors						
	Run (MFD / Volts)	30					
	No. of Run Capacitors						

LOW SPEED PERFORMANCE DATA:

HP:							
Poles:							
Volts:							
HZ:							
Efficiency:	@ Rated Load						
Power Factor:	@ Rated Load						
Amps:	@ No Load						
	@ Rated Load						
	@ Service Factor						
	@ Locked Rotor						
Torques:	Bead Down						
	Locked Rotor						
	Pull-Up						
	Rated Load						
	Service Factor						
Watts:	@ Rated Load						
Temperature Rise:	@ Rated Load						
	@ Service Factor						

DRAWING NO.	PAGE 1 of 1	REV.
5K476BG		-

©2019 W.W. Grainger, Inc. This design may not be reproduced, modified or redistributed without written permission from W.W. Grainger, Inc.

Performance Data



5K476BG

REV.

-

Dayton Manufacturing Company

Motor Description

Test Conditions

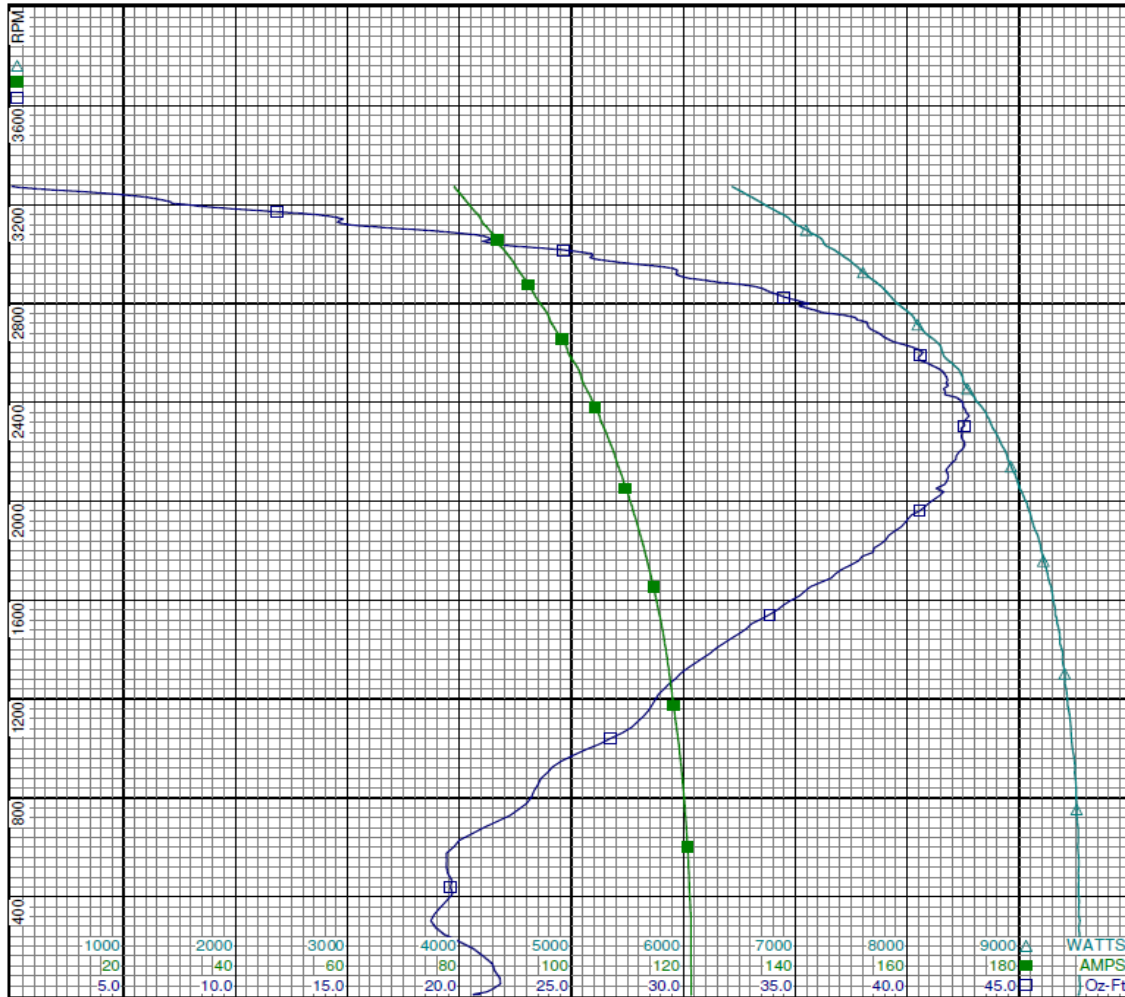
Model:	T63CLR-2286 5K476BG	Test Type:	Start	Run Cap:	30 mfd 370 volt
Motor ID:	1	Test Number:	2	Start Cap:	208 mfd 165 volt
Poles:	2	Poles:	2	Environment:	
Volts:	115/208-230	Volts:	115	Tested:	4/13/2004 9:51:32 AM
Frequency:	60	Hz:	60	Tested By:	Crocker, Jason
HP:	2	Rotation:		Gear Ratio:	1:1
Speed:	3450	Special Cond:		Bearing Friction:	-0.43 Oz-Ft
Phase:	1	Speed Conn:		Windage Torque:	-3.47 Oz-Ft
Protector:	AUTO	TestBoard:	Amtps Performance Fixture #2		

Special Points	Vline (V)	Vaux (V)	Iline (A)	Imain (A)	Iaux (A)	Watts	RPM	Tq(Oz-ft)	HP	Eff (%)	PF (%)
	115.0	115.0	121.43	102.66	19.363	9535	3	20.89	0.001	0.0	68.3
	115.0	115.1	121.34	102.63	19.293	9542	27	21.51	0.007	0.1	68.4
	115.0	115.2	121.32	103.07	18.700	9537	247	19.30	0.057	0.4	68.4
PUT OZ-FT	115.0	115.2	121.33	103.23	18.533	9541	302	18.71	0.067	0.5	68.4
	115.0	115.3	120.99	103.27	18.034	9528	466	19.65	0.109	0.9	68.5
	115.0	115.2	120.49	103.31	17.379	9523	678	21.05	0.170	1.3	68.7
	115.0	115.2	119.77	103.17	16.755	9500	877	23.63	0.247	1.9	69.0
	115.0	115.2	118.88	102.80	16.158	9460	1063	27.26	0.345	2.7	69.2
	115.0	115.2	117.86	102.26	15.628	9418	1239	29.13	0.430	3.4	69.5
	115.0	115.3	116.80	101.70	15.152	9376	1404	31.45	0.526	4.2	69.8
	115.0	115.2	115.51	101.02	14.583	9320	1561	34.21	0.635	5.1	70.2
	115.0	115.3	114.08	100.17	14.055	9250	1706	36.80	0.748	6.0	70.5
	115.0	115.3	112.51	99.22	13.563	9173	1844	39.05	0.857	7.0	70.9
	115.0	115.4	110.81	98.16	13.137	9073	1976	40.77	0.959	7.9	71.2
	115.0	115.4	109.05	96.95	12.786	8970	2097	41.82	1.044	8.7	71.5
	115.0	115.4	107.30	95.68	12.640	8862	2212	42.47	1.118	9.4	71.8
	115.0	115.4	105.33	94.31	12.479	8740	2319	42.50	1.173	10.0	72.2
	115.0	115.4	103.42	92.90	12.413	8601	2419	42.19	1.215	10.5	72.3
	115.0	115.4	101.57	91.53	12.466	8479	2514	41.66	1.247	11.0	72.6
	115.0	115.4	99.37	89.85	12.683	8314	2603	40.69	1.261	11.3	72.7
	115.0	115.4	97.36	88.25	12.938	8151	2685	38.61	1.234	11.3	72.8
	115.0	115.5	95.58	86.79	13.274	8015	2762	36.24	1.192	11.1	72.9
	115.0	115.4	93.38	85.04	13.708	7834	2835	34.24	1.155	11.0	72.9
	115.0	115.5	91.50	83.35	14.256	7669	2901	30.21	1.043	10.1	72.9
	115.0	115.3	89.66	81.74	14.791	7506	2965	27.26	0.962	9.6	72.8
	115.0	115.4	87.65	79.93	15.460	7315	3023	23.68	0.852	8.7	72.6
	115.0	115.3	86.13	78.48	15.955	7172	3077	20.72	0.759	7.9	72.4
	115.0	115.5	84.07	76.58	16.735	6978	3128	14.55	0.542	5.8	72.2
	115.0	115.5	82.56	75.10	17.294	6816	3176	10.95	0.414	4.5	71.8
	115.0	115.4	80.90	73.48	17.970	6641	3221	6.57	0.252	2.8	71.4
	115.0	115.4	79.35	71.90	18.634	6474	3263	1.22	0.047	0.5	70.9
	115.0	115.4	79.00	71.54	18.791	6434	3273	0.00	0.000	0.0	70.8

DRAWING NO.	PAGE 1 of 8	REV.
	5K476BG	-

5K476BG

REV.
-



Curve Descriptions:
 Motor(1) Test 2 Start 115V 60 Hz 2P

- SPEED vs TORQUE
- SPEED vs ILine
- △ SPEED vs WATTS

Motor Ratings:
 (1) T63CLR-2286 ID: 1
 5K476BG

DRAWING NO. PAGE 2 of 8 REV.
5K476BG -



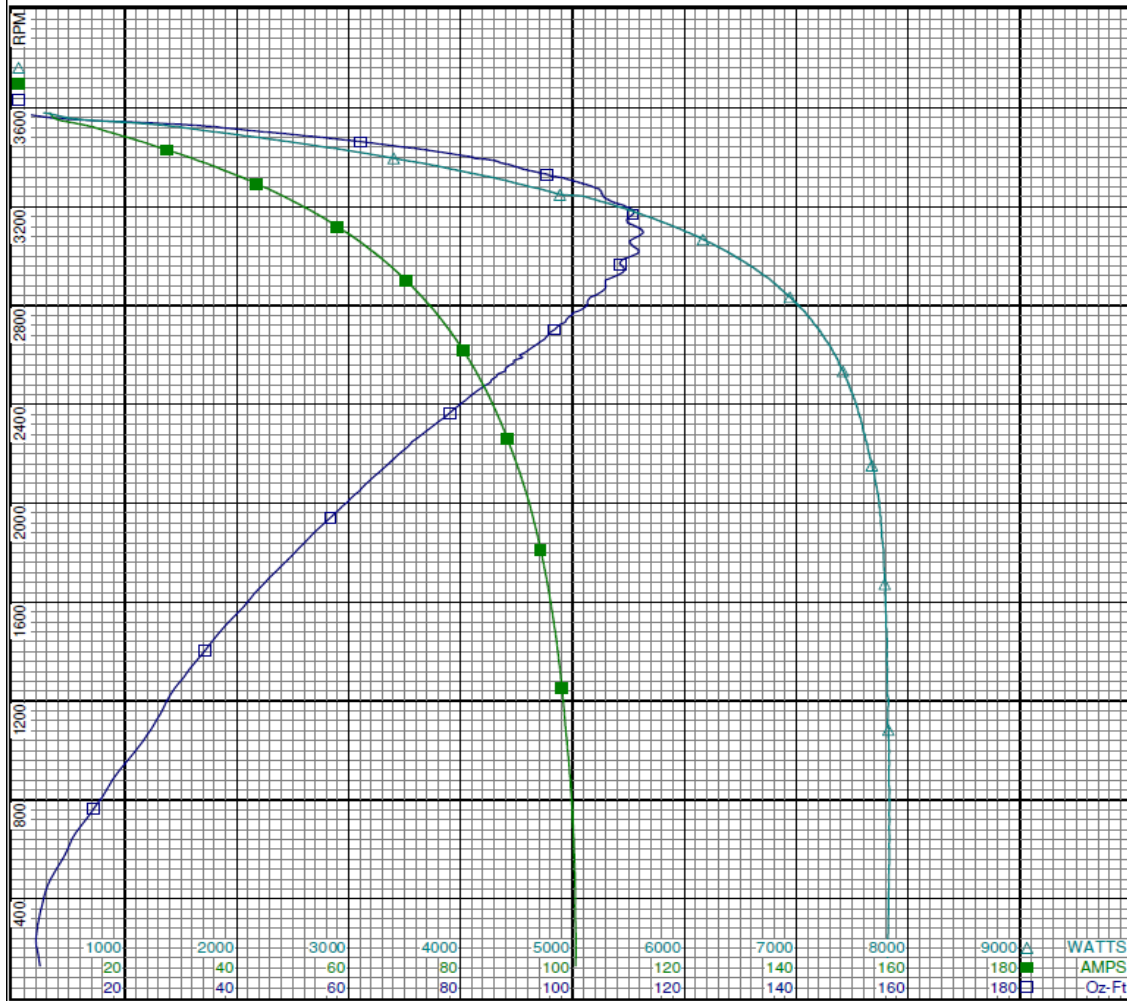
5K476BG		REV.																		
Dayton Manufacturing Company																				
Motor Description			Test Conditions																	
Model:	T63CLR-2286	5K476BG	Test Type:	Run	Run Cap:	30 mfd	370 volt													
Motor ID:	1		Test Number:	3	Start Cap:	208 mfd	165 volt													
Poles:	2		Poles:	2	Environment:															
Volts:	115/208-230		Volts:	115	Tested:	4/13/2004	8:30:59 AM													
Frequency:	60		Hz:	60	Tested By:	Crocker, Jason														
HP:	2		Rotation:		Gear Ratio:	1:1														
Speed:	3450		Special Cond:		Bearing Friction:	-0.43 Oz-Ft														
Phase:	1		Special Conn:		Windage Torque:	-3.19 Oz-Ft														
Protector:	AUTO		TestBoard:	Amps Performance	Fixture #2															
Special Points	Vline (V)	Vaux (V)	Vcap (V)	Iline (A)	Imain (A)	Iaux (A)	Watts	RPM	Tq(Oz-ft)	HP	Eff (%)	PF (%)	Cap							
	115.0	254.4	281.2	6.52	7.24	3.018	274	3579	0.00	0.000	0.0	36.5	28.5							
	115.0	246.3	265.8	10.24	8.95	2.854	995	3540	22.40	0.944	70.8	84.5	28.5							
	115.0	234.9	249.7	17.01	15.28	2.713	1797	3502	44.81	1.868	77.6	91.9	28.8							
48.7 OZ-FT	115.0	232.9	246.8	18.23	16.46	2.689	1938	3494	48.70	2.026	78.0	92.5	28.9							
58.44 OZ-FT	115.0	227.2	238.8	21.62	19.83	2.620	2314	3471	58.44	2.415	77.9	93.1	29.1							
	115.0	224.8	235.4	23.02	21.24	2.591	2466	3462	62.18	2.563	77.5	93.1	29.2							
3450 RPM	115.0	221.8	231.4	24.62	22.89	2.553	2646	3450	66.46	2.730	76.9	93.5	29.3							
	115.0	214.3	221.5	28.70	27.06	2.459	3079	3421	76.37	3.110	75.4	93.3	29.5							
	115.0	203.8	208.3	34.19	32.68	2.342	3633	3377	87.05	3.499	71.8	92.4	29.8							
	115.0	193.1	195.3	39.49	38.12	2.227	4148	3330	95.48	3.785	68.1	91.3	30.2							
	115.0	182.4	182.9	44.60	43.38	2.106	4616	3280	103.57	4.044	65.4	90.0	30.5							
	115.0	171.6	170.7	49.53	48.46	1.985	5204	3227	106.36	4.086	58.6	91.4	30.8							
	115.0	160.7	159.1	54.34	53.40	1.863	5612	3169	110.77	4.179	55.5	89.8	31.0							
	115.0	150.6	148.8	58.79	57.99	1.762	5974	3107	112.31	4.153	51.9	88.4	31.4							
BDT OZ-FT	115.0	148.4	146.5	59.69	58.92	1.739	6042	3093	112.61	4.146	51.2	88.0	31.5							
	115.0	140.2	138.8	63.07	62.40	1.656	6289	3039	110.83	4.010	47.6	86.7	31.6							
	115.0	130.0	129.6	67.12	66.57	1.553	6567	2965	108.50	3.830	43.5	85.1	31.8							
	115.0	120.1	121.1	70.97	70.55	1.456	6817	2884	105.85	3.634	39.8	83.5	31.9							
	115.0	110.6	114.2	74.55	74.27	1.378	7024	2797	102.43	3.410	36.2	81.9	32.0							
	115.0	101.2	108.2	77.88	77.70	1.305	7198	2702	96.84	3.115	32.3	80.4	32.0							
	115.0	92.6	103.4	80.96	80.90	1.248	7346	2599	90.51	2.800	28.4	78.9	32.0							
	115.0	84.0	99.9	83.80	83.83	1.202	7461	2487	85.27	2.525	25.2	77.4	31.9							
	115.0	75.8	97.3	86.39	86.54	1.167	7554	2366	78.07	2.199	21.7	76.0	31.8							
	115.0	68.2	95.8	88.75	88.98	1.129	7635	2235	70.86	1.885	18.4	74.8	31.3							
	115.0	60.7	95.5	90.95	91.29	1.117	7700	2094	63.84	1.592	15.4	73.6	31.0							
	115.0	53.8	96.0	92.92	93.32	1.129	7754	1941	56.70	1.311	12.6	72.6	31.2							
	115.0	47.3	97.2	94.59	95.09	1.142	7778	1778	49.44	1.047	10.0	71.5	31.2							
	115.0	40.8	99.0	96.07	96.67	1.149	7794	1597	41.78	0.794	7.6	70.5	30.8							
	115.0	34.7	101.3	97.33	97.99	1.167	7808	1404	34.28	0.573	5.5	69.8	30.6							
	115.0	29.7	103.5	98.27	98.98	1.190	7820	1209	27.67	0.398	3.8	69.2	30.5							
	115.0	24.5	105.7	99.14	99.92	1.212	7829	995	21.74	0.258	2.5	68.7	30.4							
	115.0	19.0	108.7	99.90	100.74	1.238	7830	765	14.42	0.131	1.2	68.2	30.2							
	115.0	13.8	111.9	100.37	101.26	1.262	7827	526	7.88	0.049	0.5	67.8	29.9							
	115.0	9.6	115.5	100.55	101.51	1.294	7819	262	4.19	0.013	0.1	67.6	29.7							

Performance Data



5K476BG

REV.
-



Curve Descriptions:
Motor(1) Test 3 Run 115V 60 Hz 2P

- SPEED vs TORQUE
- SPEED vs ILine
- △ SPEED vs WATTS

Motor Ratings:
(1) T63CLR-2286 ID: 1
5K476BG

DRAWING NO. PAGE 4 of 8 REV.
5K476BG -

Performance Data



5K476BG

REV.

-

Dayton Manufacturing Company

Motor Description

Model: T63CLR-2286 5K476BG
 Motor ID: 1
 Poles: 2
 Volts: 115/208-230
 Frequency: 60
 HP: 2
 Speed: 3450
 Phase: 1
 Protector: AUTO

Test Conditions

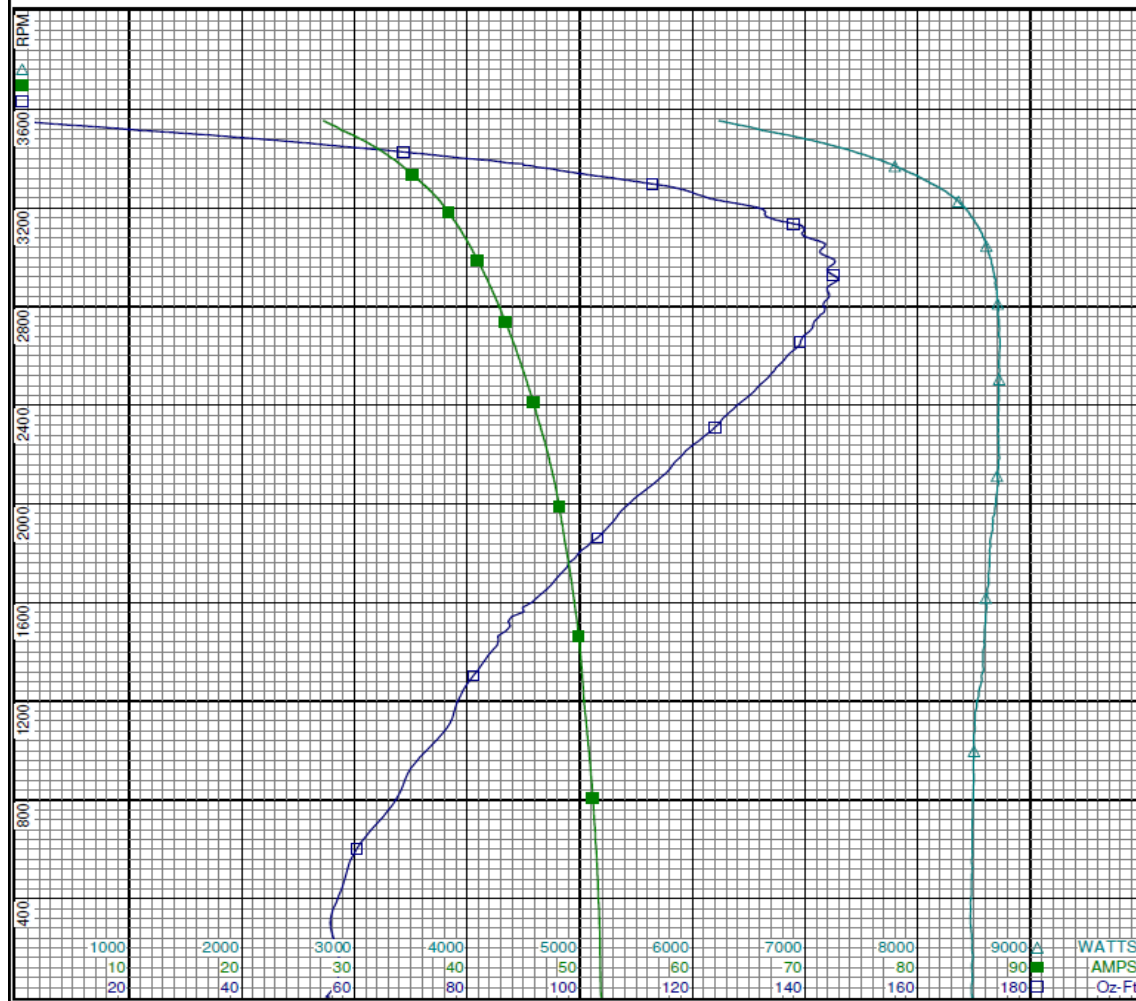
Test Type: Start Run Cap: 30 mfd 370 volt
 Test Number: 10 Start Cap: 208 mfd 165 volt
 Poles: 2 Environment:
 Volts: 230 Tested: 4/12/2004 10:10:04 PM
 Hz: 60 Tested By: Crocker, Jason
 Rotation: Gear Ratio: 1:1
 Special Cond: Bearing Friction: -0.34 Oz-Ft
 Speed Conn: Windage Torque: -3.60 Oz-Ft
 TestBoard: Amtps Performance Fixture #2

Special Points	Vline(V)	Vaux(V)	Vcap(V)	Iline(A)	Imain(A)	Iaux(A)	Watts	RPM	Tq(Oz-ft)	HP	Eff(%)	PF(%)	Cap
230.0	147.4	135.9	51.92	54.29	12.11	8485	1	55.51	0.001	0.0	71.1	236.4	
PUT OZ-FT	230.0	147.6	135.8	51.87	54.23	12.11	8483	2	54.93	0.001	0.0	71.1	236.5
	230.0	148.9	134.9	51.82	54.07	12.01	8485	73	56.98	0.049	0.4	71.2	236.3
	230.0	154.9	130.0	51.68	53.40	11.57	8471	357	56.15	0.238	2.1	71.3	236.1
	230.0	161.1	125.8	51.39	52.52	11.19	8482	628	61.17	0.457	4.0	71.8	235.9
	230.0	167.7	122.2	51.02	51.50	10.85	8498	879	68.92	0.721	6.3	72.4	235.6
	230.0	174.5	119.3	50.55	50.36	10.60	8502	1110	76.90	1.016	8.9	73.1	235.7
	230.0	181.2	119.6	50.18	49.28	10.62	8582	1325	81.87	1.291	11.2	74.4	235.6
	230.0	188.0	116.7	49.74	48.13	10.34	8603	1524	87.26	1.583	13.7	75.2	235.1
	230.0	195.7	114.6	49.16	46.79	10.14	8627	1709	96.30	1.959	16.9	76.3	234.8
	230.0	203.8	113.3	48.54	45.34	10.01	8653	1879	103.86	2.323	20.0	77.5	234.5
	230.0	212.3	112.8	47.97	43.67	9.91	8698	2036	110.46	2.678	23.0	78.8	233.1
	230.0	221.7	113.1	47.25	42.01	9.94	8724	2186	117.66	3.062	26.2	80.3	233.1
	230.0	231.3	114.5	46.42	40.34	10.08	8715	2322	124.55	3.443	29.5	81.6	233.5
	230.0	241.4	116.8	45.62	38.56	10.30	8718	2446	130.46	3.799	32.5	83.1	233.9
	230.0	252.0	120.4	44.80	36.69	10.61	8719	2561	135.24	4.124	35.3	84.6	233.7
	230.0	263.3	125.2	43.99	34.78	11.04	8727	2667	139.38	4.426	37.8	86.3	233.9
	230.0	274.8	131.2	43.14	32.82	11.57	8711	2765	142.61	4.694	40.2	87.8	234.1
	230.0	286.9	138.2	42.31	30.90	12.21	8700	2854	144.17	4.898	42.0	89.4	234.5
	230.0	299.2	146.2	41.47	28.97	12.95	8673	2936	144.32	5.045	43.4	90.9	234.9
	230.0	311.7	155.4	40.63	27.10	13.79	8631	3011	143.01	5.127	44.3	92.4	235.4
	230.0	324.5	165.2	39.82	25.32	14.72	8585	3079	140.48	5.150	44.7	93.7	236.4
	230.0	336.8	176.1	38.95	23.57	15.76	8510	3141	136.83	5.116	44.8	95.0	237.3
	230.0	349.4	187.7	38.04	21.89	16.90	8418	3199	131.78	5.019	44.5	96.2	238.8
	230.0	361.3	199.7	37.06	20.34	18.10	8285	3253	121.01	4.685	42.2	97.2	240.5
	230.0	371.6	211.0	35.92	18.89	19.28	8104	3302	111.36	4.377	40.3	98.1	242.4
	230.0	381.9	222.0	34.77	17.75	20.47	7898	3348	97.37	3.881	36.7	98.8	244.6
	230.0	391.3	232.5	33.66	16.99	21.62	7682	3390	84.71	3.419	33.2	99.2	246.7
	230.0	400.1	243.2	32.38	16.36	22.84	7418	3430	66.84	2.729	27.4	99.6	249.1
	230.0	407.7	253.3	30.94	16.07	23.99	7099	3469	48.25	1.993	20.9	99.8	251.2
	230.0	413.8	263.2	29.27	16.02	25.20	6713	3506	27.09	1.131	12.6	99.7	254.0
	230.0	418.2	270.2	27.67	16.41	26.17	6340	3543	4.92	0.208	2.4	99.6	256.9
	230.0	419.2	271.9	27.23	16.62	26.43	6233	3554	0.00	0.000	0.0	99.5	257.9

DRAWING NO. PAGE 5 of 8 REV.
 5K476BG -

5K476BG

REV.
-



Curve Descriptions:
 Motor(1) Test 10 Start 230V 60 Hz 2P

- SPEED vs TORQUE
- SPEED vs ILine
- △ SPEED vs WATTS

Motor Ratings:
 (1) T63CLR-2286 ID: 1
 5K476BG

5K476BG

REV.

-

Dayton Manufacturing Company

Motor Description

Model: T63CLR-2286 5K476BG
 Motor ID: 1
 Poles: 2
 Volts: 115/208-230
 Frequency: 60
 HP: 2
 Speed: 3450
 Phase: 1
 Protector: AUTO

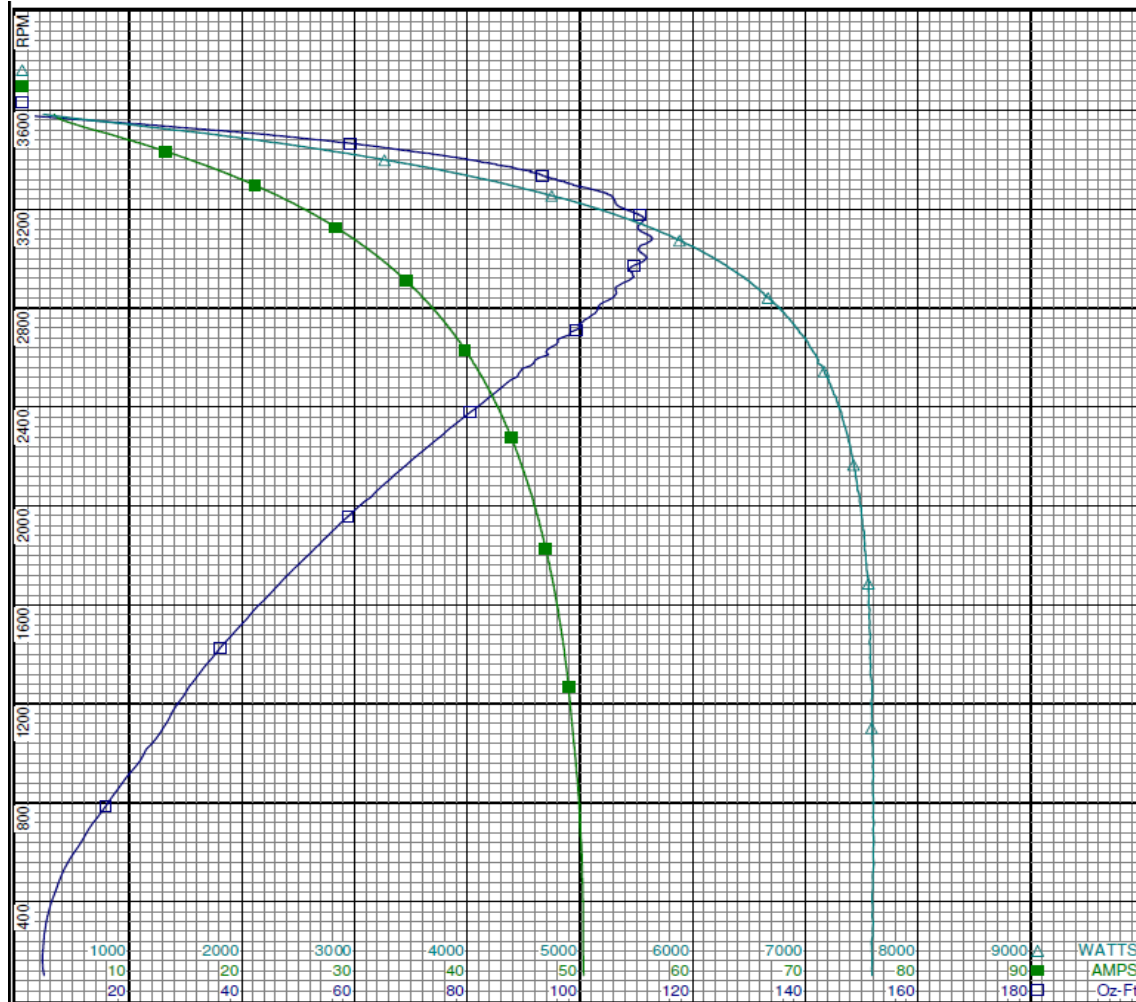
Test Conditions

Test Type: Run
 Test Number: 11
 Poles: 2
 Volts: 230
 Hz: 60
 Rotation:
 Special Cond:
 Speed Conn:
 TestBoard: Amps Performance Fixture #2
 Run Cap: 30 mfd 370 volt
 Start Cap: 208 mfd 165 volt
 Environment:
 Tested: 4/12/2004 7:39:22 PM
 Tested By: Crocker, Jason
 Gear Ratio: 1:1
 Bearing Friction: -0.36 Oz-Ft
 Windage Torque: -2.91 Oz-Ft

Special Points	Vline (V)	Vaux (V)	Vcap (V)	Iline (A)	Imain (A)	Iaux (A)	Watts	RPM	Tq (Oz-ft)	HP	Eff (%)	PF (%)	Cap
	230.0	278.2	281.6	3.30	4.59	3.028	235	3583	0.00	0.000	0.0	30.9	28.5
	230.0	278.3	266.3	5.09	4.21	2.867	958	3544	21.64	0.913	71.1	81.8	28.6
	230.0	274.7	251.4	8.00	6.40	2.725	1675	3506	42.02	1.753	78.1	91.0	28.7
48.7 OZ-FT	230.0	273.2	246.3	9.09	7.42	2.678	1922	3491	48.70	2.024	78.6	92.0	28.8
58.44 OZ-FT	230.0	270.5	238.2	10.83	9.12	2.605	2308	3468	58.44	2.412	78.0	92.6	29.0
	230.0	270.4	237.6	10.96	9.25	2.599	2336	3466	59.20	2.443	78.0	92.6	29.0
3450 RPM	230.0	268.5	232.5	12.04	10.34	2.551	2566	3450	64.59	2.653	77.1	92.7	29.1
	230.0	265.4	224.4	13.79	12.11	2.476	2939	3425	73.30	2.988	75.9	92.7	29.3
	230.0	260.0	211.7	16.46	14.87	2.359	3482	3381	85.02	3.422	73.3	92.0	29.6
	230.0	253.9	199.1	19.10	17.62	2.242	3998	3335	93.34	3.706	69.1	91.0	29.9
	230.0	247.5	187.1	21.65	20.29	2.130	4472	3286	101.02	3.952	65.9	89.8	30.2
	230.0	241.2	175.3	24.12	22.90	2.017	4928	3233	106.12	4.084	61.8	88.8	30.5
	230.0	234.6	164.1	26.50	25.43	1.905	5325	3175	110.61	4.181	58.6	87.4	30.8
	230.0	227.8	153.5	28.77	27.83	1.791	5688	3113	110.57	4.097	53.7	86.0	30.9
BDT OZ-FT	230.0	224.2	148.3	29.87	29.01	1.734	5851	3080	112.82	4.137	52.8	85.2	31.0
	230.0	221.0	143.4	30.92	30.11	1.681	6008	3046	110.55	4.009	49.8	84.5	31.1
	230.0	214.1	133.9	33.00	32.32	1.573	6294	2972	109.59	3.878	46.0	82.9	31.2
	230.0	207.1	125.6	34.95	34.40	1.474	6538	2892	107.03	3.685	42.1	81.3	31.1
	230.0	200.3	117.9	36.79	36.36	1.385	6754	2806	103.24	3.449	38.1	79.8	31.2
	230.0	193.6	111.4	38.50	38.19	1.304	6936	2712	99.36	3.208	34.5	78.3	31.0
	230.0	187.1	105.9	40.08	39.89	1.235	7090	2610	94.35	2.932	30.8	76.9	30.9
	230.0	180.7	101.7	41.56	41.47	1.180	7211	2499	87.09	2.591	26.8	75.4	30.8
	230.0	174.5	98.4	42.92	42.92	1.135	7317	2378	80.47	2.278	23.2	74.1	30.6
	230.0	168.7	96.2	44.13	44.23	1.103	7393	2249	73.49	1.967	19.8	72.8	30.4
	230.0	163.0	95.0	45.22	45.44	1.082	7452	2108	66.30	1.664	16.7	71.6	30.2
	230.0	157.5	94.9	46.22	46.51	1.072	7498	1957	58.83	1.371	13.6	70.5	30.0
	230.0	152.2	95.4	47.10	47.46	1.072	7536	1795	51.51	1.101	10.9	69.6	29.8
	230.0	146.9	96.8	47.88	48.29	1.085	7560	1619	43.88	0.846	8.3	68.6	29.7
	230.0	141.9	98.6	48.55	49.03	1.102	7576	1428	36.23	0.616	6.1	67.9	29.7
	230.0	137.4	100.6	49.05	49.59	1.122	7591	1230	29.57	0.433	4.3	67.3	29.6
	230.0	133.3	102.6	49.49	50.11	1.144	7598	1016	22.98	0.278	2.7	66.7	29.6
	230.0	128.7	105.2	49.91	50.58	1.166	7604	787	15.83	0.148	1.5	66.2	29.4
	230.0	124.4	108.2	50.16	50.90	1.191	7607	552	8.93	0.059	0.6	65.9	29.2
	230.0	119.9	111.6	50.25	51.05	1.222	7595	289	5.04	0.017	0.2	65.7	29.0

5K476BG

REV.
-



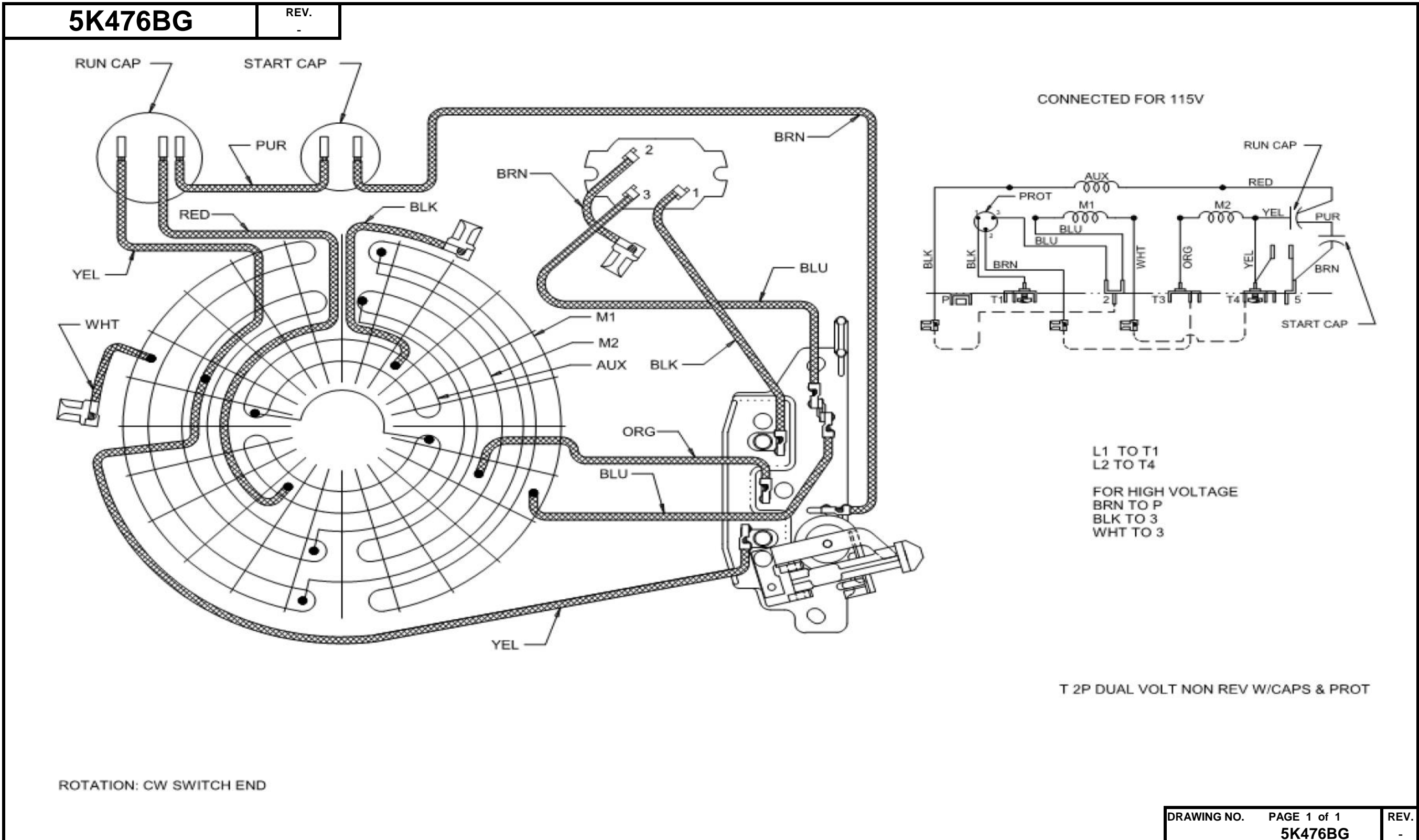
Curve Descriptions:
 Motor(1) Test 11 Run 230V 60 Hz 2P

- SPEED vs TORQUE
- SPEED vs I Line
- △ SPEED vs WATTS

Motor Ratings:
 (1) T63CLR-2286 ID: 1
 5K476BG

DRAWING NO. PAGE 8 of 8 REV.
5K476BG -

Wiring Diagram



Dayton Electric Mfg. Co. Lake Forest, IL 60045 USA

Dayton®

JET PUMP MOTOR

HP: 2

VOLTS: 115/208-230

AMPS: 19.6/10.7-9.8

RPM: 3450

DUTY: CONT

SF: 1.2

KVA CODE: G

ENCL: ODP

THERMALLY PROTECTED: AUTO

MFG. NO. PROT. CODE:

MTR REF: T63CXCLR-2286



Part No 5K476BG

PH: 1

HZ: 60

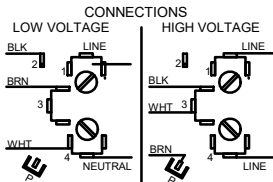
FR: 56J

INS CL: B

AMB: 40 °C

SFA: 22.2/12.2-11.1

AVG. F.L. EFF. 82.9

**Disconnect Power Before Making
Any Electrical Connections or Changes****MOTOR IS NON-REVERSIBLE
CCW ROTATION SHAFT END**SUPPLY CONNECTIONS, USE WIRES SIZED
ON THE BASIS OF 60°C AMPACITY AND
RATED MINIMUM 90°C.

E37403



258501

Mfd for Dayton Electric Mfg. Co., Lake Forest, IL 60045 USA

Made in Mexico