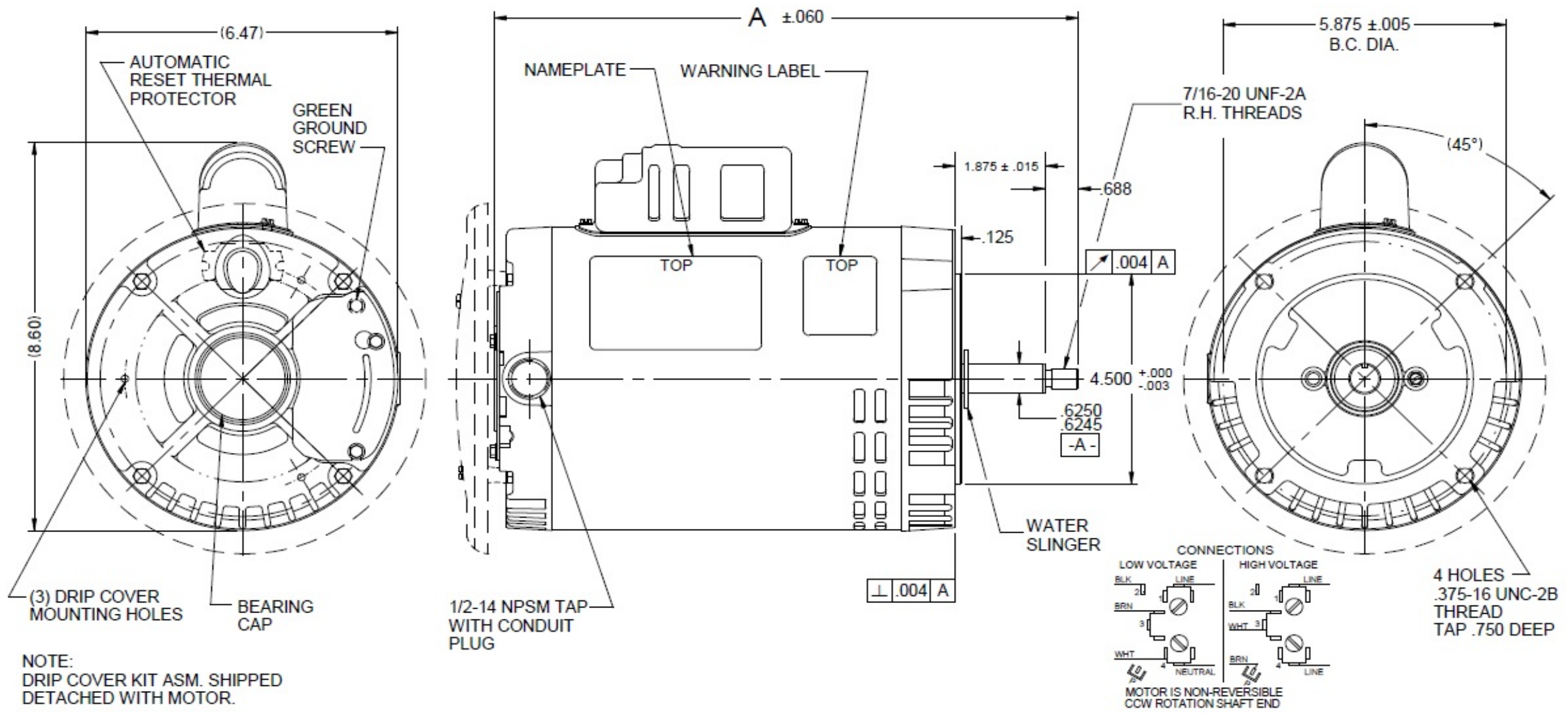


Dimensional Drawing



5K475BG REV. -

VAR	MODEL	CUST. PT. NO.	A	B	C	D	HP	VOLTS	SF	AMPS	HZ	RPM	CONN VOLTS	PROT.	DESCRIPTION / REMARKS
001	C63CXHKC-1372	5K475BG	12.874	-----	-----	-----	1.5	115/208-230	1.3	18.2/9.2-9.1	60	3450	230	AUTO	56J, ODP DRIP COVER



DRAWING NO. PAGE 1 of 1 REV. -
5K475BG

Dayton Electric Mfg. Co. Lake Forest, IL 60045 USA

Performance Data



5K475BG

REV.
-

MOTOR PERFORMANCE

HP:	1 1/2						
Poles:	2						
No. of Speeds:	1						
Volts:	115/208-230	208	230	115			
HZ:	60	60	60	60			
Service Factor:	1.3						
Efficiency:	@ Rated Load	74.2	72.8	72.9			
Power Factor:	@ Rated Load	82.2	76.2	76.7			
Amps:	@ No Load						
	@ Rated Load	8.9	8.9	17.7			
	@ Service Factor	11.1	10.72	20.94			
	@ Locked Rotor	47.1	53.5	105.9			
RPM:	@ Rated Load	3495	3514	3516			
Ambient (°C):	40						
Altitude (FASL):							
Torques:	Breakdown	82.5	102.7	104.6			
	Locked Rotor	41.3	51	54			
	Pull-Up	37.2	45.9	48.6			
	Rated Load	36.5	36.5	36.5			
	Service Factor	47.5	47.5	47.5			
Watts:	Rated Load	1528	1564	1565			
KVA Code:	K	H	K	K			
Temperature Rise:	@ Rated Load	36	28.5	19.7			
	@ Service Factor	60.2	59	21.8			
Thermal Protector:	Trip Temp (°C)	140.6	137.6	128.6			
Winding Material:	Start (Auxiliary)	Cu	Cu	Cu			
	Run (Main)	Al	Al	Al			
Capacitor(s):	Start (MFD / Volts)	238					
	No. of Start Capacitors						
	Run (MFD / Volts)	N/A					
	No. of Run Capacitors						
LOW SPEED PERFORMANCE DATA:							
HP:							
Poles:							
Volts:							
HZ:							
Efficiency:	@ Rated Load						
Power Factor:	@ Rated Load						
Amps:	@ No Load						
	@ Rated Load						
	@ Service Factor						
	@ Locked Rotor						
Torques:	Bead Down						
	Locked Rotor						
	Pull-Up						
	Rated Load						
	Service Factor						
Watts:	@ Rated Load						
Temperature Rise:	@ Rated Load						
	@ Service Factor						

DRAWING NO. PAGE 1 of 1 REV.
5K475BG -

Dayton Electric Mfg. Co. Lake Forest, IL 60045 USA

Performance Data



5K475BG

REV.
-

Dayton Manufacturing Company

Motor Description

Model: C063CXHKC137201 5K475BG
 Motor ID: 1
 Poles: 2
 Volts: 115/208-230
 Frequency: 60
 HP: 1.5
 Speed: 3450
 Phase: 1
 Protector: AUTO

Test Conditions

Test Type: Start
 Test Number: 1
 Poles: 2
 Volts: 115
 Hz: 60
 Rotation:
 Special Cond:
 Speed Conn:
 TestBoard: Amps Performance Fixture #2
 Run Cap: 0
 Start Cap: 238µfd 110 VOLTS
 Environment:
 Tested: 7/18/2002 2:56:11 PM
 Tested By: Sharp, Gerald
 Gear Ratio: 1:1
 Bearing Friction: -0.38 Oz-Ft
 Windage Torque: -2.21 Oz-Ft

Special Points	Vline (V)	Vaux (V)	Vcap(V)	Iline (A)	Imain (A)	Iaux (A)	Watts	RPM	Tq(Oz-ft)	HP	Eff (%)	PF (%)	Cap
	115.0	94.8	110.1	105.86	104.12	10.28	8903	1	53.98	0.001	0.0	73.1	247.8
	115.0	95.5	109.1	105.76	103.94	10.20	8913	76	53.61	0.048	0.4	73.3	248.0
	115.0	97.0	106.7	105.70	103.65	9.97	8918	250	50.32	0.150	1.3	73.4	247.7
	115.0	98.2	105.0	105.63	103.45	9.81	8915	359	52.04	0.223	1.9	73.4	247.7
	115.0	101.5	101.3	105.13	102.56	9.45	8929	632	57.93	0.436	3.6	73.9	247.6
	115.0	105.7	98.2	104.27	101.16	9.15	8935	883	66.21	0.696	5.8	74.5	247.2
	115.0	111.4	96.9	103.18	99.47	9.02	8929	1115	74.18	0.984	8.2	75.3	247.0
	115.0	115.5	97.2	102.52	98.37	9.05	8948	1329	72.73	1.150	9.6	75.9	247.1
	115.0	117.7	93.0	101.62	97.21	8.63	8950	1528	77.27	1.405	11.7	76.6	246.3
	115.0	122.2	89.9	100.26	95.41	8.33	8939	1713	85.14	1.737	14.5	77.5	245.6
	115.0	127.4	87.9	98.76	93.43	8.12	8920	1885	92.05	2.065	17.3	78.5	244.9
	115.0	132.8	86.7	97.04	91.20	8.00	8888	2044	97.35	2.369	19.9	79.6	244.8
	115.0	138.9	87.3	95.23	88.81	8.05	8852	2193	101.85	2.659	22.4	80.8	244.6
	115.0	146.0	88.3	93.46	86.45	8.14	8823	2328	106.71	2.957	25.0	82.1	244.5
	115.0	153.2	90.2	91.61	84.00	8.32	8776	2453	111.04	3.243	27.6	83.3	244.4
	115.0	160.8	93.1	89.67	81.45	8.58	8719	2570	113.80	3.482	29.8	84.6	244.5
	115.0	168.8	96.7	87.68	78.86	8.94	8657	2675	115.78	3.687	31.8	85.8	245.2
	115.0	177.0	101.2	85.63	76.23	9.37	8575	2774	116.96	3.863	33.6	87.1	245.8
	115.0	185.3	106.3	83.52	73.55	9.89	8485	2864	116.99	3.988	35.1	88.3	246.7
	115.0	193.8	112.3	81.39	70.87	10.49	8380	2945	115.49	4.049	36.0	89.5	247.8
	115.0	202.5	118.5	79.22	68.19	11.15	8264	3019	112.94	4.059	36.6	90.7	249.6
	115.0	211.1	125.5	77.01	65.52	11.86	8133	3090	109.33	4.021	36.9	91.8	250.8
	115.0	219.4	132.4	74.80	62.86	12.63	7988	3153	103.86	3.899	36.4	92.9	253.1
	115.0	227.5	139.5	72.47	60.16	13.43	7821	3210	96.38	3.684	35.1	93.8	255.3
	115.0	235.5	146.9	70.15	57.48	14.26	7643	3265	88.73	3.448	33.7	94.7	257.5
	115.0	243.2	153.9	67.87	54.95	15.10	7464	3313	80.40	3.170	31.7	95.6	260.3
	115.0	250.0	160.7	65.32	52.14	15.95	7243	3359	69.21	2.767	28.5	96.4	263.3
	115.0	256.4	167.3	62.67	49.40	16.80	6998	3403	57.72	2.338	24.9	97.1	266.3
	115.0	262.2	173.1	59.95	46.58	17.60	6731	3441	45.39	1.860	20.6	97.6	269.7
	115.0	267.4	178.6	57.09	43.73	18.40	6446	3482	30.82	1.278	14.8	98.2	273.2
	115.0	271.9	183.9	54.08	40.71	19.17	6131	3520	16.13	0.676	8.2	98.6	276.6
	115.0	277.6	190.1	50.99	37.69	20.20	5797	3560	0.00	0.000	0.0	98.8	281.8

DRAWING NO.	PAGE 1 of 8	REV.
	5K475BG	-

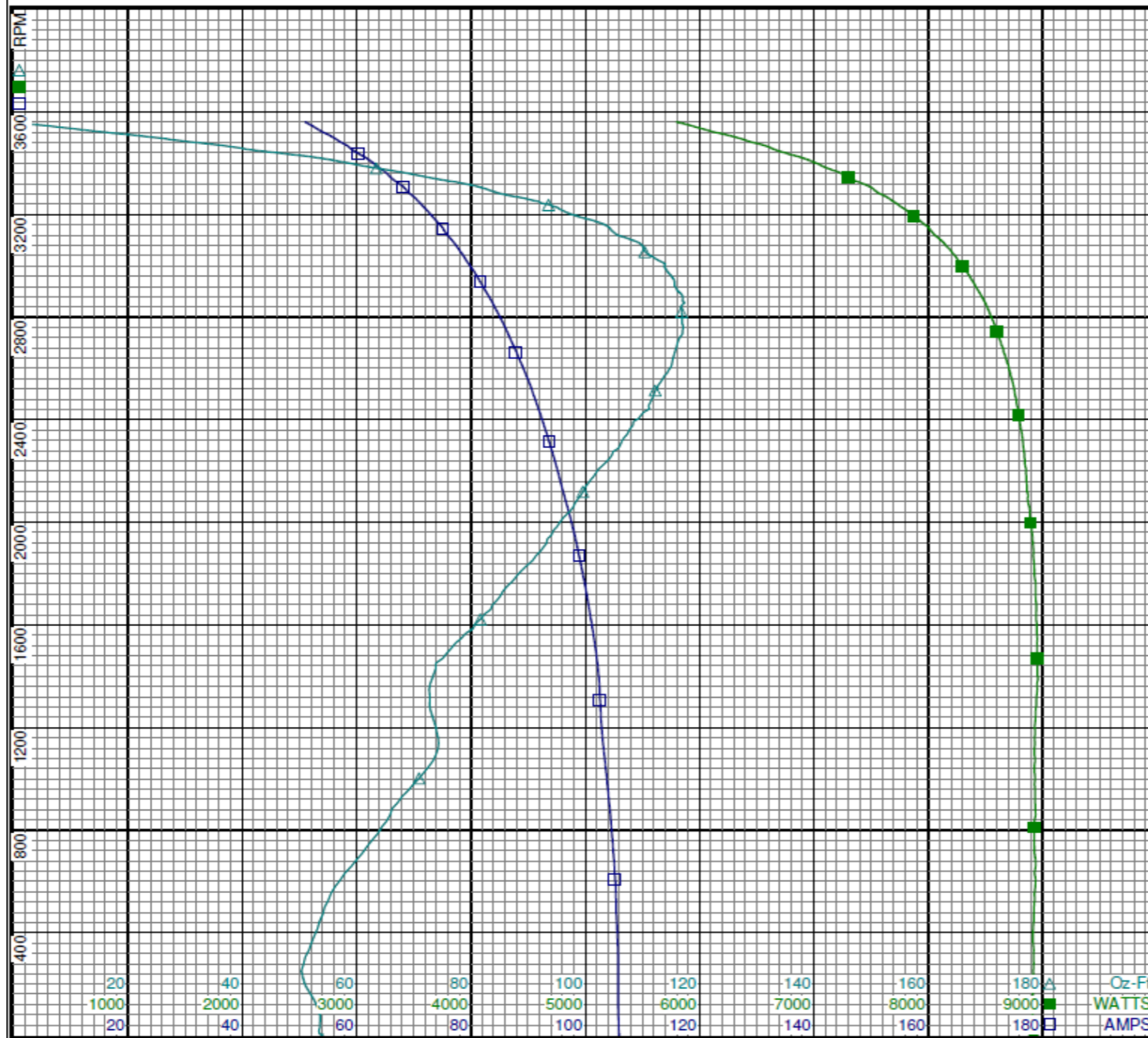
Dayton Electric Mfg. Co. Lake Forest, IL 60045 USA

Performance Data



5K475BG

REV.
-



Curve Descriptions:

Motor(1) Test 1 Start 115V 60 Hz 2P

- SPEED vs I Line
- SPEED vs WATTS
- △ SPEED vs TORQUE

Motor Ratings:

(1) C063CXHKC137201 ID: 1
5K475BG

DRAWING NO.	PAGE 2 of 8	REV.
5K475BG		-

Dayton Electric Mfg. Co. Lake Forest, IL 60045 USA

Performance Data



5K475BG

REV.
-

Dayton Manufacturing Company

Motor Description

Model: C063CXHKC137201 5K475BG
 Motor ID: 1
 Poles: 2
 Volts: 115/208-230
 Frequency: 60
 HP: 1.5
 Speed: 3450
 Phase: 1
 Protector: AUTO

Test Conditions

Test Type: Run
 Test Number: 2
 Poles: 2
 Volts: 115
 Hz: 60
 Rotation:
 Special Cond:
 Speed Conn:
 TestBoard: Amps Performance Fixture #2
 Run Cap: 0
 Start Cap: 238µfd 110 VOLTS
 Environment:
 Tested: 7/18/2002 11:58:16 AM
 Tested By: Sharp, Gerald
 Gear Ratio: 1:1
 Bearing Friction: -0.27 Oz-Ft
 Windage Torque: -2.33 Oz-Ft

Special Points	Vline (V)	Iline (A)	Watts	RPM	Tq (Oz-ft)	HP	Eff (%)	PF (%)
	115.0	11.46	255	3595	0.00	0.000	0.0	19.3
	115.0	13.54	929	3555	19.09	0.808	64.9	59.7
	115.0	17.67	1557	3516	36.32	1.521	72.9	76.6
36.52 OZ-FT	115.0	17.73	1565	3516	36.52	1.529	72.9	76.7
47.47 OZ-FT	115.0	20.94	1972	3490	47.47	1.972	74.6	81.9
	115.0	22.45	2160	3478	51.66	2.139	73.9	83.7
3450 RPM	115.0	25.92	2559	3450	60.60	2.489	72.6	85.9
	115.0	27.78	2755	3435	64.52	2.639	71.5	86.2
	115.0	32.67	3293	3393	75.74	3.059	69.3	87.7
	115.0	37.66	3792	3346	84.09	3.350	65.9	87.6
	115.0	42.67	4280	3301	91.78	3.607	62.9	87.2
	115.0	47.64	4754	3245	97.30	3.759	59.0	86.8
	115.0	52.28	5170	3186	101.16	3.837	55.4	86.0
	115.0	56.95	5560	3124	103.67	3.855	51.7	84.9
BDT OZ-FT	115.0	60.99	5893	3063	104.60	3.814	48.3	84.0
	115.0	61.44	5926	3056	104.42	3.799	47.8	83.9
	115.0	65.75	6249	2983	103.44	3.673	43.9	82.6
	115.0	69.83	6538	2904	101.65	3.514	40.1	81.4
	115.0	73.70	6791	2819	98.77	3.314	36.4	80.1
	115.0	77.34	7013	2723	94.39	3.060	32.5	78.8
	115.0	80.79	7205	2621	89.14	2.782	28.8	77.5
	115.0	83.97	7372	2509	82.70	2.470	25.0	76.3
	115.0	86.88	7502	2387	76.58	2.176	21.6	75.1
	115.0	89.56	7615	2258	69.70	1.874	18.4	73.9
	115.0	91.97	7702	2116	61.95	1.561	15.1	72.8
	115.0	94.15	7772	1964	54.46	1.274	12.2	71.8
	115.0	96.10	7827	1801	46.52	0.997	9.5	70.8
	115.0	97.80	7859	1625	38.00	0.735	7.0	69.9
	115.0	99.15	7871	1438	29.56	0.506	4.8	69.0
	115.0	99.94	7862	1237	23.51	0.346	3.3	68.4
	115.0	100.75	7902	1022	21.46	0.261	2.5	68.2
	115.0	101.95	7942	787	11.18	0.105	1.0	67.7
	115.0	102.60	7943	547	2.63	0.017	0.2	67.3
	115.0	102.80	7933	291	-1.89	-0.007	0.0	67.1

DRAWING NO.	PAGE 3 of 8	REV.
	5K475BG	-

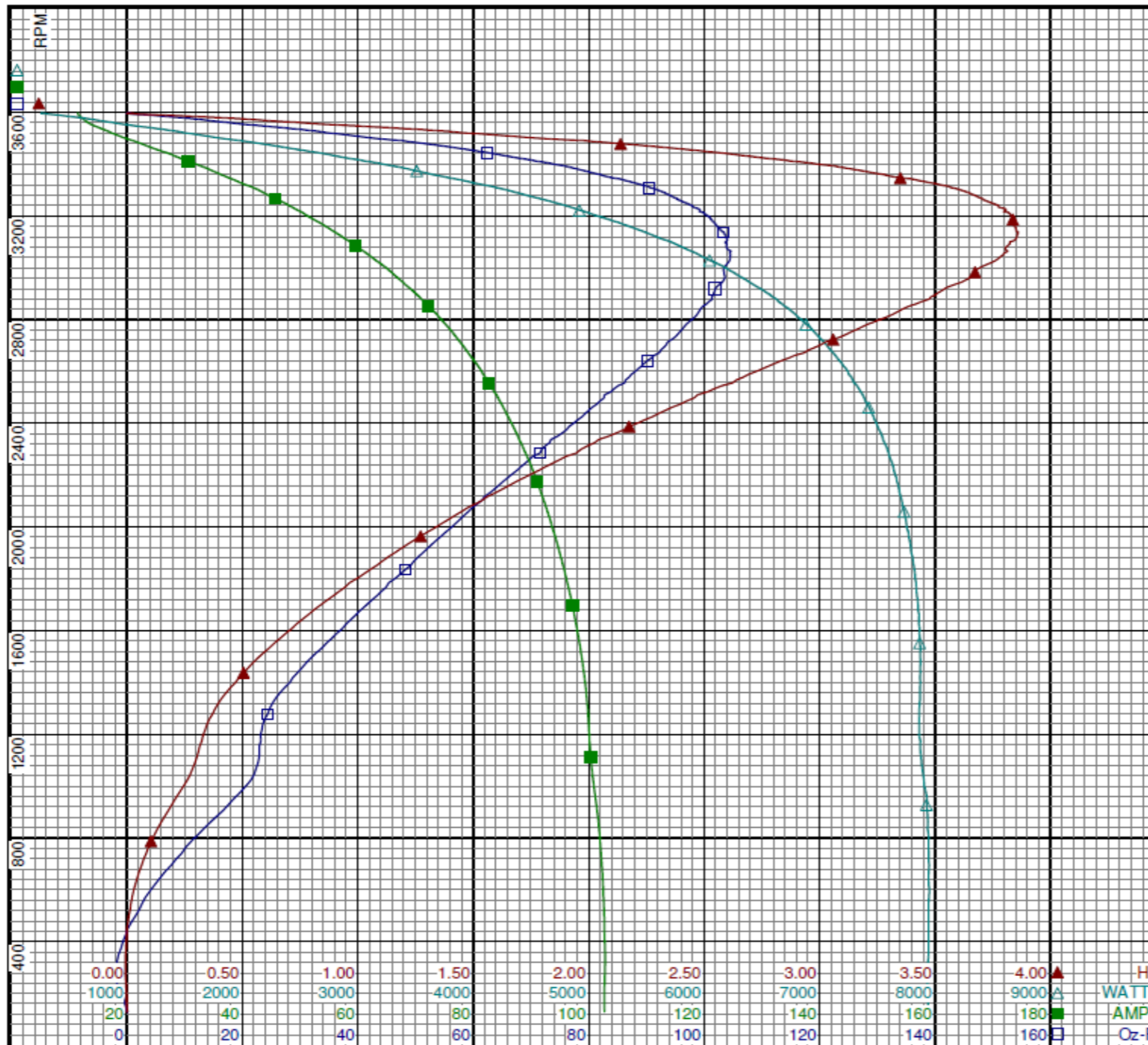
Dayton Electric Mfg. Co. Lake Forest, IL 60045 USA

Performance Data



5K475BG

REV.
-



Curve Descriptions: Motor(1)
Test 2 Run 115V 60 Hz 2P

- SPEED vs TORQUE
- SPEED vs ILine
- △ SPEED vs WATTS
- ▲ SPEED vs HP

Motor Ratings:

(1) C063CXHKC137201 ID: 1
5K475BG

HP
WATTS
AMPS
Oz-Ft

DRAWING NO.	PAGE 4 of 8	REV.
5K475BG		-

Dayton Electric Mfg. Co. Lake Forest, IL 60045 USA

Performance Data



5K475BG REV.
-

Dayton Manufacturing Company

Motor Description

Model: C063CXHKC137201 5K475BG
 Motor ID: 1
 Poles: 2
 Volts: 115/208-230
 Frequency: 60
 HP: 1.5
 Speed: 3450
 Phase: 1
 Protector: AUTO

Test Conditions

Test Type: Start Run Cap: 0
 Test Number: 5 Start Cap: 238µfd 110 VOLTS
 Poles: 2 Environment:
 Volts: 230 Tested: 7/18/2002 5:27:10 PM
 Hz: 60 Tested By: Sharp, Gerald
 Rotation: Gear Ratio: 1:1
 Special Cond: Bearing Friction: -0.22 Oz-Ft
 Speed Conn: Windage Torque: -2.43 Oz-Ft
 TestBoard: Amtps Performance Fixture #2

Special Points	Vline (V)	Vaux (V)	Vcap (V)	Iline (A)	Imain (A)	Iaux (A)	Watts	RPM	Tq(Oz-ft)	HP	Eff(%)	PF(%)	Cap
	230.0	186.1	103.2	53.48	52.10	9.629	8797	1	50.97	0.001	0.0	71.5	247.5
	230.0	187.5	102.4	53.37	51.89	9.554	8790	73	51.73	0.045	0.4	71.6	247.6
PUT OZ-FT	230.0	191.6	99.8	53.35	51.58	9.301	8800	275	47.65	0.156	1.3	71.7	247.3
	230.0	192.9	98.4	53.31	51.43	9.165	8789	357	48.95	0.208	1.8	71.7	247.1
	230.0	198.4	94.7	52.96	50.65	8.806	8801	631	54.90	0.412	3.5	72.3	246.5
	230.0	204.5	91.8	52.52	49.69	8.517	8795	882	63.97	0.672	5.7	72.8	246.2
	230.0	210.9	90.5	51.93	48.50	8.407	8788	1117	71.87	0.955	8.1	73.6	246.3
	230.0	215.5	90.9	51.58	47.70	8.443	8816	1329	70.74	1.119	9.5	74.3	246.4
	230.0	219.9	87.1	51.12	46.94	8.052	8826	1528	75.71	1.377	11.6	75.1	245.3
	230.0	226.1	84.4	50.44	45.79	7.793	8815	1714	83.53	1.705	14.4	76.0	244.8
	230.0	232.8	82.8	49.69	44.51	7.637	8805	1886	90.60	2.034	17.2	77.0	244.6
	230.0	239.7	82.2	48.89	43.15	7.551	8790	2044	96.63	2.351	20.0	78.2	243.7
	230.0	247.0	82.3	47.99	41.71	7.566	8755	2192	102.12	2.664	22.7	79.3	243.8
	230.0	254.6	83.4	47.10	40.24	7.671	8718	2327	106.59	2.953	25.3	80.5	243.9
	230.0	260.7	86.2	46.02	38.62	7.928	8666	2453	108.74	3.175	27.3	81.9	244.1
	230.0	268.8	90.2	44.98	36.93	8.329	8644	2570	111.49	3.411	29.4	83.6	244.9
	230.0	276.7	94.3	43.92	35.29	8.716	8551	2675	113.40	3.610	31.5	84.6	245.3
	230.0	284.8	98.9	42.85	33.67	9.175	8465	2772	114.07	3.764	33.2	85.9	246.1
	230.0	293.2	104.2	41.75	32.05	9.710	8375	2862	114.58	3.903	34.8	87.2	247.3
	230.0	301.6	110.2	40.63	30.44	10.312	8266	2944	112.20	3.932	35.5	88.5	248.3
	230.0	309.9	116.5	39.48	28.84	10.981	8145	3019	108.84	3.912	35.8	89.7	250.1
	230.0	317.9	123.2	38.33	27.30	11.692	8010	3088	105.18	3.867	36.0	90.9	251.8
	230.0	325.9	130.3	37.14	25.80	12.454	7860	3150	100.33	3.763	35.7	92.0	253.4
	230.0	333.4	137.3	35.96	24.31	13.226	7694	3208	93.04	3.554	34.5	93.0	255.6
	230.0	340.7	144.5	34.70	22.87	14.035	7497	3262	84.95	3.299	32.8	93.9	257.6
	230.0	347.6	151.4	33.44	21.54	14.853	7301	3311	76.84	3.029	30.9	94.9	260.3
	230.0	354.1	158.0	32.17	20.32	15.659	7081	3357	66.38	2.653	28.0	95.7	262.8
	230.0	360.0	164.3	30.90	19.23	16.453	6855	3401	55.84	2.261	24.6	96.5	265.7
	230.0	365.6	170.3	29.54	18.26	17.252	6602	3442	42.57	1.745	19.7	97.2	268.7
	230.0	370.4	176.0	28.08	17.27	18.034	6305	3481	29.45	1.221	14.4	97.6	271.8
	230.0	374.7	181.2	26.57	16.52	18.801	5998	3518	14.91	0.625	7.8	98.2	275.2
	230.0	378.1	185.5	24.93	15.83	19.554	5648	3556	0.00	0.000	0.0	98.5	279.6

DRAWING NO. PAGE 5 of 8 REV.
 5K475BG -

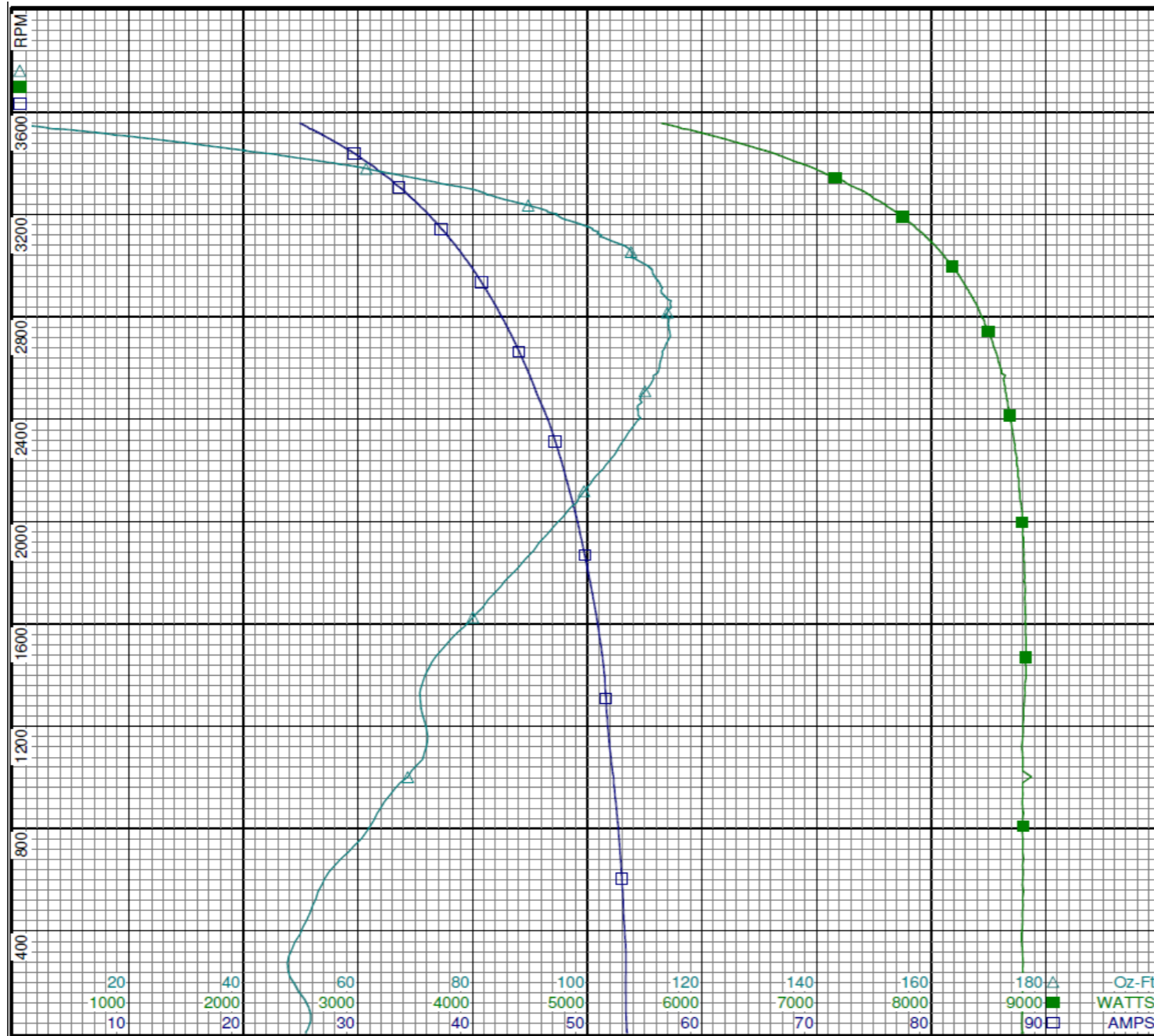
Dayton Electric Mfg. Co. Lake Forest, IL 60045 USA

Performance Data



5K475BG

REV.
-



Curve Descriptions:

Motor(1) Test 5 Start 230V 60 Hz 2P

- SPEED vs ILine
- SPEED vs WATTS
- △ SPEED vs TORQUE

Motor Ratings:

(1) C063CXHKC137201 ID: 1
5K475BG

DRAWING NO.	PAGE 6 of 8	REV.
5K475BG		-

Dayton Electric Mfg. Co. Lake Forest, IL 60045 USA

Performance Data



5K475BG

REV.
-

Dayton Manufacturing Company

Motor Description

Model: C063CXHKC137201 5K475BG
 Motor ID: 1
 Poles: 2
 Volts: 115/208-230
 Frequency: 60
 HP: 1.5
 Speed: 3450
 Phase: 1
 Protector: AUTO

Test Conditions

Test Type: Run
 Test Number: 6
 Poles: 2
 Volts: 230
 Hz: 60
 Rotation:
 Special Cond:
 Speed Conn:
 TestBoard: Aamps Performance Fixture #2
 Run Cap: 0
 Start Cap: 238µfd 110 VOLTS
 Environment:
 Tested: 7/18/2002 3:49:54 PM
 Tested By: Sharp, Gerald
 Gear Ratio: 1:1
 Bearing Friction: -0.19 Oz-Ft
 Windage Torque: -2.11 Oz-Ft

Special Points	Vline (V)	Iline (A)	Watts	RPM	Tq(Oz-ft)	HP	Eff (%)	PF (%)
	230.0	5.76	277	3594	0.00	0.000	0.0	21.0
	230.0	6.78	921	3557	18.90	0.801	64.8	59.0
	230.0	8.77	1527	3517	35.39	1.481	72.4	75.6
36.52 OZ-FT	230.0	8.93	1564	3514	36.52	1.528	72.8	76.2
47.47 OZ-FT	230.0	10.72	2014	3484	47.47	1.969	72.9	81.6
	230.0	11.06	2095	3479	49.43	2.047	72.9	82.4
3450 RPM	230.0	12.78	2499	3450	58.48	2.402	71.7	85.0
	230.0	13.52	2662	3437	62.04	2.538	71.1	85.6
	230.0	15.92	3177	3394	72.12	2.914	68.4	86.8
	230.0	18.37	3670	3347	81.50	3.247	66.0	86.9
	230.0	20.83	4157	3300	88.43	3.474	62.3	86.8
	230.0	23.18	4602	3244	94.53	3.651	59.2	86.3
	230.0	25.49	5023	3187	98.36	3.732	55.4	85.7
	230.0	27.78	5420	3126	100.86	3.754	51.7	84.8
BDT OZ-FT	230.0	29.57	5716	3072	102.65	3.755	49.0	84.0
	230.0	29.99	5782	3060	102.53	3.735	48.2	83.8
	230.0	32.14	6111	2982	102.49	3.639	44.4	82.7
	230.0	34.19	6404	2904	100.82	3.486	40.6	81.4
	230.0	36.14	6668	2815	97.92	3.282	36.7	80.2
	230.0	37.99	6900	2721	94.32	3.056	33.0	79.0
	230.0	39.72	7099	2619	89.50	2.791	29.3	77.7
	230.0	41.32	7259	2509	84.40	2.521	25.9	76.4
	230.0	42.82	7407	2390	77.71	2.211	22.3	75.2
	230.0	44.18	7519	2257	70.76	1.902	18.9	74.0
	230.0	45.43	7614	2115	63.50	1.599	15.7	72.9
	230.0	46.55	7685	1964	55.76	1.304	12.7	71.8
	230.0	47.56	7749	1800	47.62	1.021	9.8	70.8
	230.0	48.41	7776	1625	39.60	0.766	7.3	69.8
	230.0	49.12	7794	1437	31.64	0.541	5.2	69.0
	230.0	49.55	7791	1236	25.28	0.372	3.6	68.4
	230.0	50.01	7836	1016	22.14	0.268	2.5	68.1
	230.0	50.60	7873	788	12.11	0.114	1.1	67.6
	230.0	50.94	7877	545	2.96	0.019	0.2	67.2
	230.0	51.04	7875	293	-1.48	-0.005	0.0	67.1

DRAWING NO.	PAGE 7 of 8	REV.
	5K475BG	-

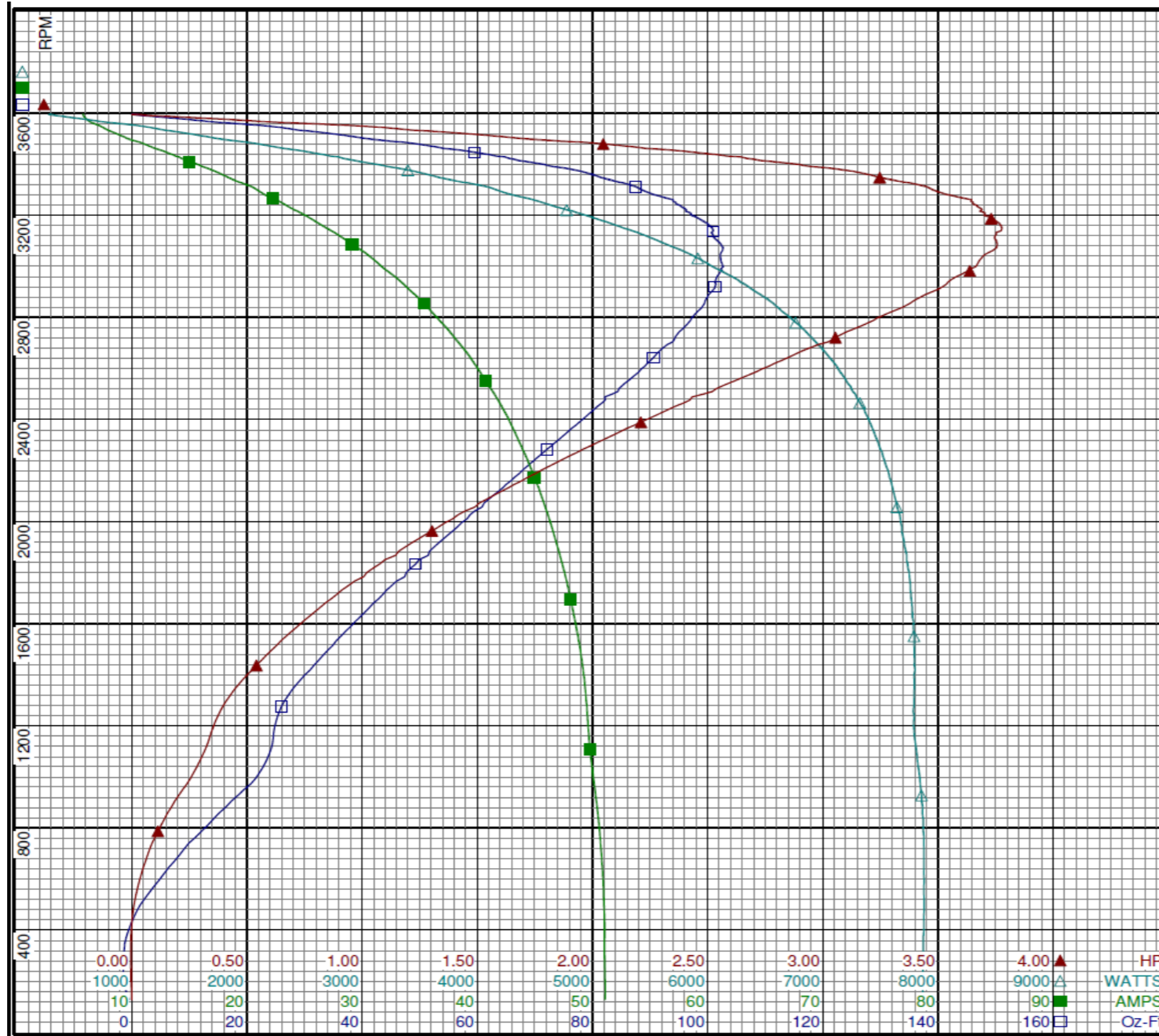
Dayton Electric Mfg. Co. Lake Forest, IL 60045 USA

Performance Data



5K475BG

REV.
-



Curve Descriptions:

Motor(1) Test 6 Run 230V 60 Hz 2P

- SPEED vs TORQUE
- SPEED vs ILine
- △ SPEED vs WATTS
- ▲ SPEED vs HP

Motor Ratings:

(1) C063CXHKC137201 ID: 1

5K475BG

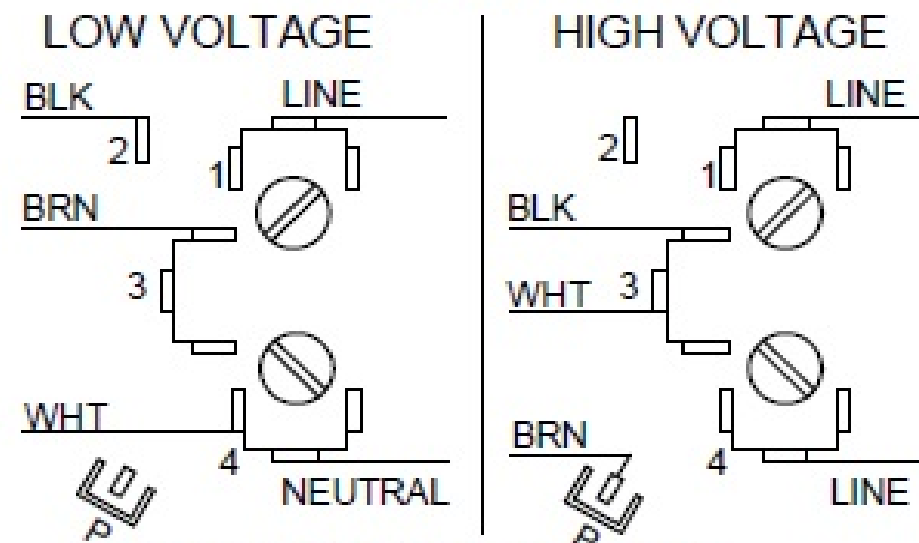
DRAWING NO.	PAGE 8 of 8	REV.
5K475BG		-

Dayton Electric Mfg. Co. Lake Forest, IL 60045 USA

5K475BG

REV.
-

CONNECTIONS



MOTOR IS NON-REVERSIBLE
CCW ROTATION SHAFT END

DRAWING NO.	PAGE 1 of 1	REV.
5K475BG		-

Dayton[®]

JET PUMP MOTOR

HP: 1.5

VOLTS: 115/208-230

AMPS: 18.2/9.2-9.1

RPM: 3450

DUTY: CONT

SF: 1.3

KVA CODE: K

ENCL: ODP

THERMALLY PROTECTED: AUTO

MFG. NO. PROT. CODE:

MTR REF: C63CXHKC-1372

PH: 1

HZ: 60

FR: 56J

INS CL: B

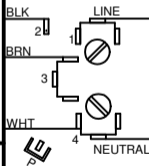
AMB: 40 °C

SFA: 21.8/11.3-10.9

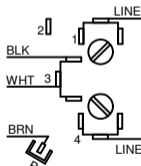
AVG. F.L.
EFF.Part
No 5K475BG**Disconnect Power Before Making Any
Electrical Connections or Changes**

CONNECTIONS

LOW VOLTAGE



HIGH VOLTAGE

**MOTOR IS NON-REVERSIBLE
CCW ROTATION SHAFT END**

Mfd for Dayton Electric Mfg. Co., Lake Forest, IL 60045 USA

Made in Mexico