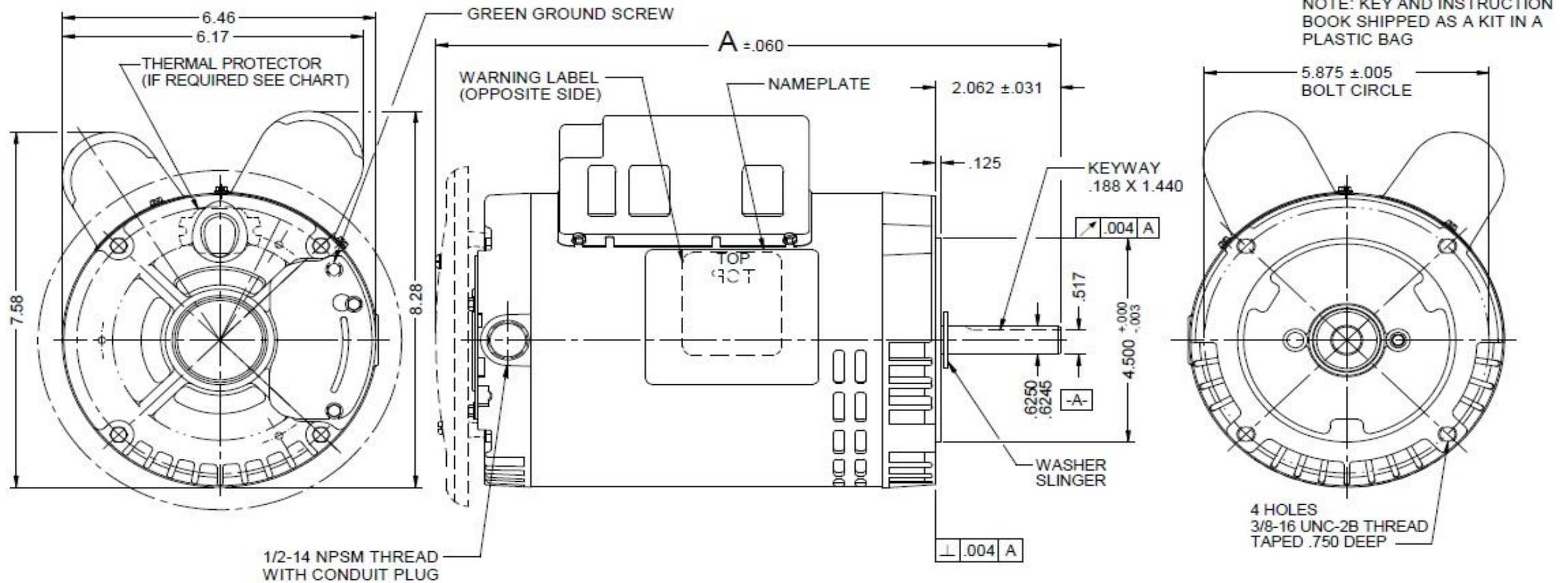


Dimensional Drawing



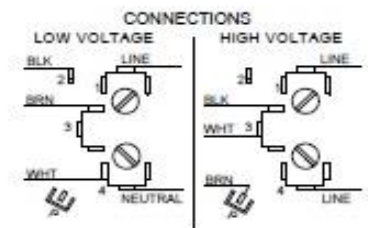
5K470BG REV. -

| VAR | MODEL | CUST. PT. NO. | A | B | C | D | HP | VOLTS | SF | AMPS | HZ | RPM | CONN VOLTS | PROT. | DESCRIPTION / REMARKS |
|-----|---------------|---------------|--------|-----|-----|-----|-----|-------------|-----|---------------|----|------|------------|-------|-----------------------------------|
| 001 | T63CXCLR-2297 | 5K470BG | 12.373 | --- | --- | --- | 2.0 | 115/208-230 | 1.2 | 19.6/10.7-9.8 | 60 | 3450 | 230 | AUTO | 56C,CAP START CAP RUN DRIP COVER. |



NOTE: KEY AND INSTRUCTION BOOK SHIPPED AS A KIT IN A PLASTIC BAG

NOTE: DRIP COVER SHIPPED DETACHED IN KIT ASM



MOTOR IS NON-REVERSIBLE
CCW ROTATION SHAFT END
SUPPLY CONNECTIONS USE WIRES SIZED ON THE BASIS OF 80% AMPLACITY AND RATED MINIMUM 90°C.

DRAWING NO. PAGE 1 of 1 REV. -
5K470BG

Performance Data



5K470BG

REV.
-

MOTOR PERFORMANCE

| | | | | | | | |
|---------------------------|-------------------------|------------|------------|------------|--|--|--|
| HP: | 2.0 | | | | | | |
| Poles: | 2 | | | | | | |
| No. of Speeds: | 1 | | | | | | |
| Volts: | 115/208-230 | 115 | 208 | 230 | | | |
| HZ: | 60 | 60 | 60 | 60 | | | |
| Service Factor: | 1.2 | | | | | | |
| Efficiency: | @ Rated Load | 78.0 | 77.8 | 78.6 | | | |
| Power Factor: | @ Rated Load | 92.5 | 94.0 | 92.0 | | | |
| Amps: | @ No Load | | | | | | |
| | @ Rated Load | 18.2 | 9.8 | 9.1 | | | |
| | @ Service Factor | 21.62 | 12.01 | 10.83 | | | |
| | @ Locked Rotor | 121.4 | 45.1 | 51.9 | | | |
| RPM: | @ Rated Load | 3494 | 3463 | 3491 | | | |
| Ambient (°C): | 40 | | | | | | |
| Altitude (FASL): | | | | | | | |
| Torques: | Breakdown | 112.6 | 90.6 | 112.8 | | | |
| | Locked Rotor | 20.9 | 49 | 55.5 | | | |
| | Pull-Up | 18.7 | 46.6 | 54.9 | | | |
| | Rated Load | 48.7 | 48.7 | 48.7 | | | |
| | Service Factor | 58.4 | 58.4 | 58.4 | | | |
| Watts: | Rated Load | 1938 | 1924 | 1922 | | | |
| KVA Code: | H | H | E | G | | | |
| Temperature Rise: | @ Rated Load | 40.3 | 42 | 43.3 | | | |
| | @ Service Factor | 50.9 | 61.8 | 5.9 | | | |
| Thermal Protector: | Trip Temp (°C) | 129.3 | 154.5 | 151.4 | | | |
| Winding Material: | Start (Auxiliary) | Cu | Cu | Cu | | | |
| | Run (Main) | Al | Al | Al | | | |
| Capacitor(s): | Start (MFD / Volts) | 208 | | | | | |
| | No. of Start Capacitors | | | | | | |
| | Run (MFD / Volts) | 30 | | | | | |
| | No. of Run Capacitors | | | | | | |

LOW SPEED PERFORMANCE DATA:

| | | | | | | | |
|--------------------------|------------------|--|--|--|--|--|--|
| HP: | | | | | | | |
| Poles: | | | | | | | |
| Volts: | | | | | | | |
| HZ: | | | | | | | |
| Efficiency: | @ Rated Load | | | | | | |
| Power Factor: | @ Rated Load | | | | | | |
| Amps: | @ No Load | | | | | | |
| | @ Rated Load | | | | | | |
| | @ Service Factor | | | | | | |
| | @ Locked Rotor | | | | | | |
| Torques: | Bead Down | | | | | | |
| | Locked Rotor | | | | | | |
| | Pull-Up | | | | | | |
| | Rated Load | | | | | | |
| | Service Factor | | | | | | |
| Watts: | @ Rated Load | | | | | | |
| Temperature Rise: | @ Rated Load | | | | | | |
| | @ Service Factor | | | | | | |

DRAWING NO. PAGE 1 of 1 REV.
5K470BG -

Dayton Electric Mfg. Co. Lake Forest, IL 60045 USA

Performance Data



5K470BG REV.
-

Dayton Manufacturing Company

Motor Description

Model: T063CLR229701 5K470BG
 Motor ID: 1
 Poles: 2
 Volts: 115/208-230
 Frequency: 60
 HP: 2
 Speed: 3450
 Phase: 1
 Protector: AUTO

Test Conditions

Test Type: Start
 Test Number: 2
 Poles: 2
 Volts: 115
 Hz: 60
 Rotation:
 Special Cond:
 Speed Conn:
 TestBoard: Amps Performance Fixture #2
 Run Cap: 30 MFD 370 VOLT
 Start Cap: 208 MFD 165 VOLT
 Environment:
 Tested: 4/13/2004 9:51:32 AM
 Tested By: Crocker, Jason
 Gear Ratio: 1:1
 Bearing Friction: -0.43 Oz-Ft
 Windage Torque: -3.47 Oz-Ft

| Special Points | Vline (V) | Vaux (V) | Iline (A) | Imain (A) | Iaux (A) | Watts | RPM | Tq(Oz-ft) | HP | Eff (%) | PF (%) |
|------------------|--------------|--------------|---------------|---------------|---------------|-------------|------------|--------------|--------------|------------|-------------|
| | 115.0 | 115.0 | 121.43 | 102.66 | 19.363 | 9535 | 3 | 20.89 | 0.001 | 0.0 | 68.3 |
| | 115.0 | 115.1 | 121.34 | 102.63 | 19.293 | 9542 | 27 | 21.51 | 0.007 | 0.1 | 68.4 |
| | 115.0 | 115.2 | 121.32 | 103.07 | 18.700 | 9537 | 247 | 19.30 | 0.057 | 0.4 | 68.4 |
| PUT OZ-FT | 115.0 | 115.2 | 121.33 | 103.23 | 18.533 | 9541 | 302 | 18.71 | 0.067 | 0.5 | 68.4 |
| | 115.0 | 115.3 | 120.99 | 103.27 | 18.034 | 9528 | 466 | 19.65 | 0.109 | 0.9 | 68.5 |
| | 115.0 | 115.2 | 120.49 | 103.31 | 17.379 | 9523 | 678 | 21.05 | 0.170 | 1.3 | 68.7 |
| | 115.0 | 115.2 | 119.77 | 103.17 | 16.755 | 9500 | 877 | 23.63 | 0.247 | 1.9 | 69.0 |
| | 115.0 | 115.2 | 118.88 | 102.80 | 16.158 | 9460 | 1063 | 27.26 | 0.345 | 2.7 | 69.2 |
| | 115.0 | 115.2 | 117.86 | 102.26 | 15.628 | 9418 | 1239 | 29.13 | 0.430 | 3.4 | 69.5 |
| | 115.0 | 115.3 | 116.80 | 101.70 | 15.152 | 9376 | 1404 | 31.45 | 0.526 | 4.2 | 69.8 |
| | 115.0 | 115.2 | 115.51 | 101.02 | 14.583 | 9320 | 1561 | 34.21 | 0.635 | 5.1 | 70.2 |
| | 115.0 | 115.3 | 114.08 | 100.17 | 14.055 | 9250 | 1706 | 36.80 | 0.748 | 6.0 | 70.5 |
| | 115.0 | 115.3 | 112.51 | 99.22 | 13.563 | 9173 | 1844 | 39.05 | 0.857 | 7.0 | 70.9 |
| | 115.0 | 115.4 | 110.81 | 98.16 | 13.137 | 9073 | 1976 | 40.77 | 0.959 | 7.9 | 71.2 |
| | 115.0 | 115.4 | 109.05 | 96.95 | 12.786 | 8970 | 2097 | 41.82 | 1.044 | 8.7 | 71.5 |
| | 115.0 | 115.4 | 107.30 | 95.68 | 12.640 | 8862 | 2212 | 42.47 | 1.118 | 9.4 | 71.8 |
| | 115.0 | 115.4 | 105.33 | 94.31 | 12.479 | 8740 | 2319 | 42.50 | 1.173 | 10.0 | 72.2 |
| | 115.0 | 115.4 | 103.42 | 92.90 | 12.413 | 8601 | 2419 | 42.19 | 1.215 | 10.5 | 72.3 |
| | 115.0 | 115.4 | 101.57 | 91.53 | 12.466 | 8479 | 2514 | 41.66 | 1.247 | 11.0 | 72.6 |
| | 115.0 | 115.4 | 99.37 | 89.85 | 12.683 | 8314 | 2603 | 40.69 | 1.261 | 11.3 | 72.7 |
| | 115.0 | 115.4 | 97.36 | 88.25 | 12.938 | 8151 | 2685 | 38.61 | 1.234 | 11.3 | 72.8 |
| | 115.0 | 115.5 | 95.58 | 86.79 | 13.274 | 8015 | 2762 | 36.24 | 1.192 | 11.1 | 72.9 |
| | 115.0 | 115.4 | 93.38 | 85.04 | 13.708 | 7834 | 2835 | 34.24 | 1.155 | 11.0 | 72.9 |
| | 115.0 | 115.5 | 91.50 | 83.35 | 14.256 | 7669 | 2901 | 30.21 | 1.043 | 10.1 | 72.9 |
| | 115.0 | 115.3 | 89.66 | 81.74 | 14.791 | 7506 | 2965 | 27.26 | 0.962 | 9.6 | 72.8 |
| | 115.0 | 115.4 | 87.65 | 79.93 | 15.460 | 7315 | 3023 | 23.68 | 0.852 | 8.7 | 72.6 |
| | 115.0 | 115.3 | 86.13 | 78.48 | 15.955 | 7172 | 3077 | 20.72 | 0.759 | 7.9 | 72.4 |
| | 115.0 | 115.5 | 84.07 | 76.58 | 16.735 | 6978 | 3128 | 14.55 | 0.542 | 5.8 | 72.2 |
| | 115.0 | 115.5 | 82.56 | 75.10 | 17.294 | 6816 | 3176 | 10.95 | 0.414 | 4.5 | 71.8 |
| | 115.0 | 115.4 | 80.90 | 73.48 | 17.970 | 6641 | 3221 | 6.57 | 0.252 | 2.8 | 71.4 |
| | 115.0 | 115.4 | 79.35 | 71.90 | 18.634 | 6474 | 3263 | 1.22 | 0.047 | 0.5 | 70.9 |
| | 115.0 | 115.4 | 79.00 | 71.54 | 18.791 | 6434 | 3273 | 0.00 | 0.000 | 0.0 | 70.8 |

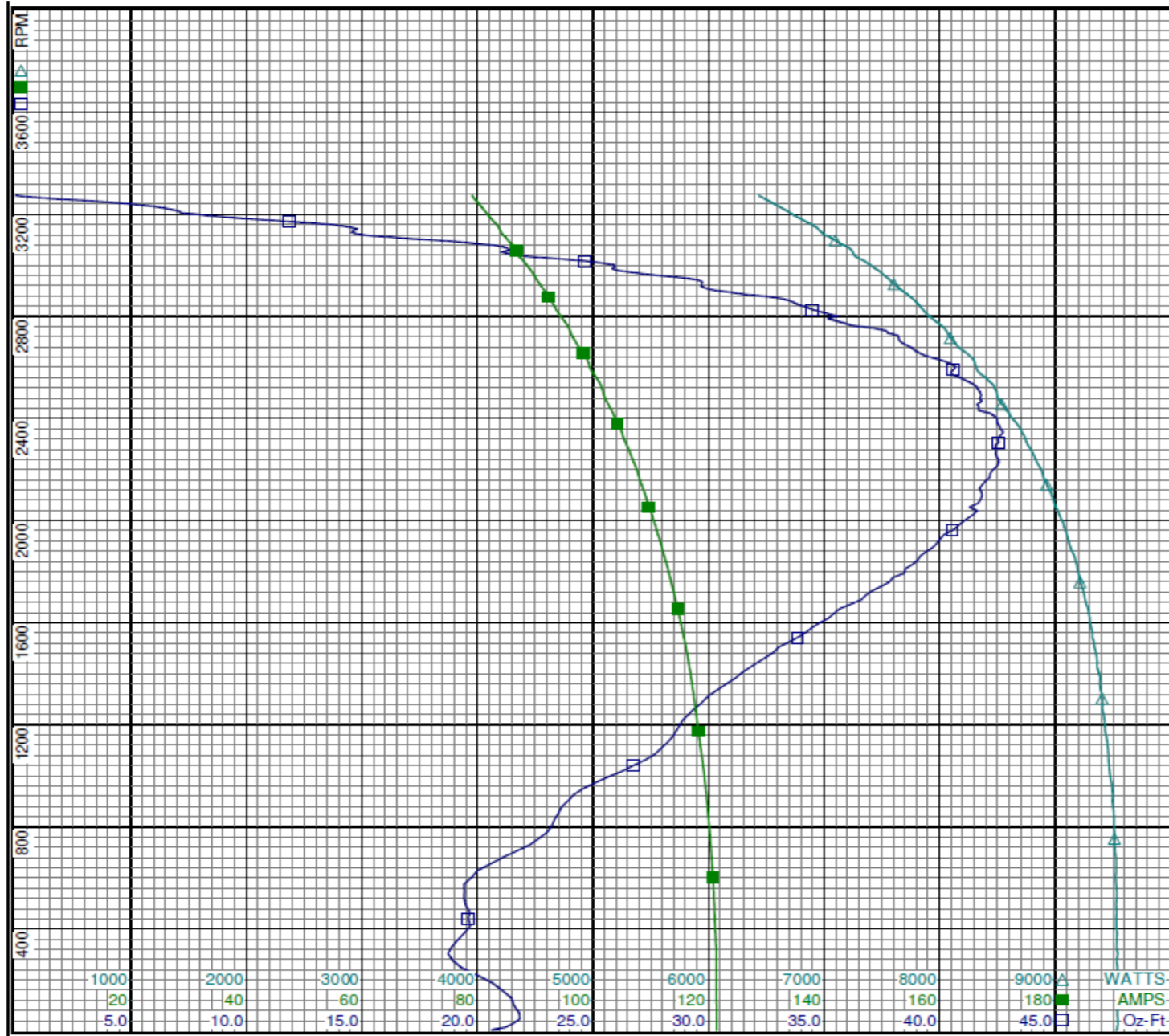
DRAWING NO. PAGE 1 of 8 REV.
5K470BG -

Dayton Electric Mfg. Co. Lake Forest, IL 60045 USA

Performance Data



5K470BG REV. -



Dayton

Curve Descriptions:
Motor(1) Test 2 Start 115V 60 Hz 2P

- SPEED vs TORQUE
- SPEED vs ILine
- △ SPEED vs WATTS

Motor Ratings:
(1) T063CLR229701 ID: 1
5K470BG

| | | |
|-------------|----------------|------|
| DRAWING NO. | PAGE 2 of 8 | REV. |
| | 5K470BG | - |

Dayton Electric Mfg. Co. Lake Forest, IL 60045 USA

Performance Data



5K470BG REV.
-

Dayton Manufacturing Company

Motor Description

Model: T063CLR229701 5K470BG
 Motor ID: 1
 Poles: 2
 Volts: 115/208-230
 Frequency: 60
 HP: 2
 Speed: 3450
 Phase: 1
 Protector: AUTO

Test Conditions

Test Type: Run
 Test Number: 3
 Poles: 2
 Volts: 115
 Hz: 60
 Rotation:
 Special Cond:
 Speed Conn:
 TestBoard: Amps Performance Fixture #2
 Run Cap: 30 MFD 370 VOLT
 Start Cap: 208 MFD 165 VOLT
 Environment:
 Tested: 4/13/2004 8:30:59 AM
 Tested By: Crocker, Jason
 Gear Ratio: 1:1
 Bearing Friction: -0.43 Oz-Ft
 Windage Torque: -3.19 Oz-Ft

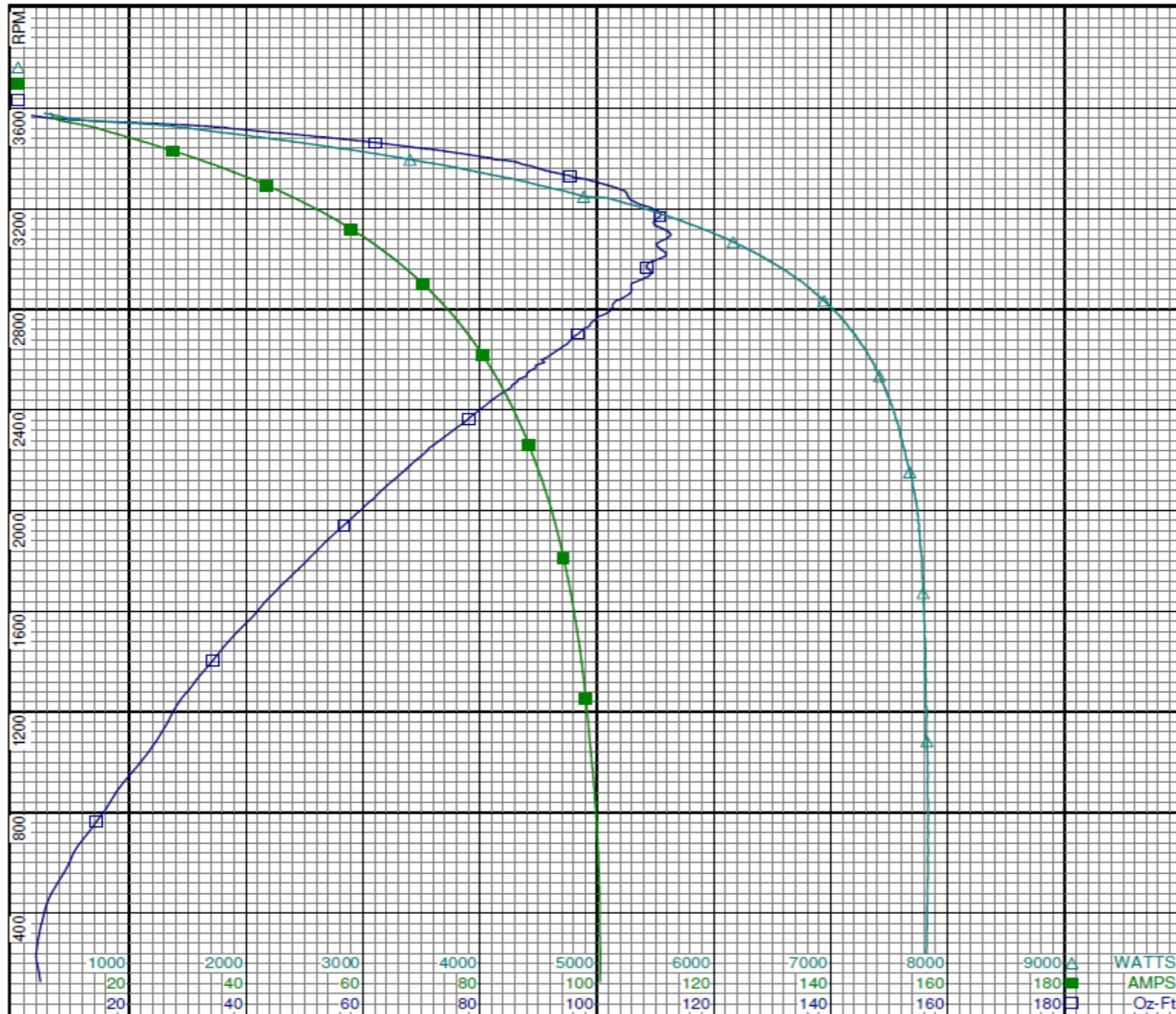
| Special Points | Vline (V) | Vaux (V) | Vcap (V) | Iline (A) | Imain (A) | Iaux (A) | Watts | RPM | Tq(Oz-ft) | HP | Eff(%) | PF (%) | Cap |
|--------------------|--------------|--------------|--------------|--------------|--------------|--------------|-------------|-------------|---------------|--------------|-------------|-------------|-------------|
| | 115.0 | 254.4 | 281.2 | 6.52 | 7.24 | 3.018 | 274 | 3579 | 0.00 | 0.000 | 0.0 | 36.5 | 28.5 |
| | 115.0 | 246.3 | 265.8 | 10.24 | 8.95 | 2.854 | 995 | 3540 | 22.40 | 0.944 | 70.8 | 84.5 | 28.5 |
| | 115.0 | 234.9 | 249.7 | 17.01 | 15.28 | 2.713 | 1797 | 3502 | 44.81 | 1.868 | 77.6 | 91.9 | 28.8 |
| 48.7 OZ-FT | 115.0 | 232.9 | 246.8 | 18.23 | 16.46 | 2.689 | 1938 | 3494 | 48.70 | 2.026 | 78.0 | 92.5 | 28.9 |
| 58.44 OZ-FT | 115.0 | 227.2 | 238.8 | 21.62 | 19.83 | 2.620 | 2314 | 3471 | 58.44 | 2.415 | 77.9 | 93.1 | 29.1 |
| | 115.0 | 224.8 | 235.4 | 23.02 | 21.24 | 2.591 | 2466 | 3462 | 62.18 | 2.563 | 77.5 | 93.1 | 29.2 |
| 3450 RPM | 115.0 | 221.8 | 231.4 | 24.62 | 22.89 | 2.553 | 2646 | 3450 | 66.46 | 2.730 | 76.9 | 93.5 | 29.3 |
| | 115.0 | 214.3 | 221.5 | 28.70 | 27.06 | 2.459 | 3079 | 3421 | 76.37 | 3.110 | 75.4 | 93.3 | 29.5 |
| | 115.0 | 203.8 | 208.3 | 34.19 | 32.68 | 2.342 | 3633 | 3377 | 87.05 | 3.499 | 71.8 | 92.4 | 29.8 |
| | 115.0 | 193.1 | 195.3 | 39.49 | 38.12 | 2.227 | 4148 | 3330 | 95.48 | 3.785 | 68.1 | 91.3 | 30.2 |
| | 115.0 | 182.4 | 182.9 | 44.60 | 43.38 | 2.106 | 4616 | 3280 | 103.57 | 4.044 | 65.4 | 90.0 | 30.5 |
| | 115.0 | 171.6 | 170.7 | 49.53 | 48.46 | 1.985 | 5204 | 3227 | 106.36 | 4.086 | 58.6 | 91.4 | 30.8 |
| | 115.0 | 160.7 | 159.1 | 54.34 | 53.40 | 1.863 | 5612 | 3169 | 110.77 | 4.179 | 55.5 | 89.8 | 31.0 |
| | 115.0 | 150.6 | 148.8 | 58.79 | 57.99 | 1.762 | 5974 | 3107 | 112.31 | 4.153 | 51.9 | 88.4 | 31.4 |
| BDT OZ-FT | 115.0 | 148.4 | 146.5 | 59.69 | 58.92 | 1.739 | 6042 | 3093 | 112.61 | 4.146 | 51.2 | 88.0 | 31.5 |
| | 115.0 | 140.2 | 138.8 | 63.07 | 62.40 | 1.656 | 6289 | 3039 | 110.83 | 4.010 | 47.6 | 86.7 | 31.6 |
| | 115.0 | 130.0 | 129.6 | 67.12 | 66.57 | 1.553 | 6567 | 2965 | 108.50 | 3.830 | 43.5 | 85.1 | 31.8 |
| | 115.0 | 120.1 | 121.1 | 70.97 | 70.55 | 1.456 | 6817 | 2884 | 105.85 | 3.634 | 39.8 | 83.5 | 31.9 |
| | 115.0 | 110.6 | 114.2 | 74.55 | 74.27 | 1.378 | 7024 | 2797 | 102.43 | 3.410 | 36.2 | 81.9 | 32.0 |
| | 115.0 | 101.2 | 108.2 | 77.88 | 77.70 | 1.305 | 7198 | 2702 | 96.84 | 3.115 | 32.3 | 80.4 | 32.0 |
| | 115.0 | 92.6 | 103.4 | 80.96 | 80.90 | 1.248 | 7346 | 2599 | 90.51 | 2.800 | 28.4 | 78.9 | 32.0 |
| | 115.0 | 84.0 | 99.9 | 83.80 | 83.83 | 1.202 | 7461 | 2487 | 85.27 | 2.525 | 25.2 | 77.4 | 31.9 |
| | 115.0 | 75.8 | 97.3 | 86.39 | 86.54 | 1.167 | 7554 | 2366 | 78.07 | 2.199 | 21.7 | 76.0 | 31.8 |
| | 115.0 | 68.2 | 95.8 | 88.75 | 88.98 | 1.129 | 7635 | 2235 | 70.86 | 1.885 | 18.4 | 74.8 | 31.3 |
| | 115.0 | 60.7 | 95.5 | 90.95 | 91.29 | 1.117 | 7700 | 2094 | 63.84 | 1.592 | 15.4 | 73.6 | 31.0 |
| | 115.0 | 53.8 | 96.0 | 92.92 | 93.32 | 1.129 | 7754 | 1941 | 56.70 | 1.311 | 12.6 | 72.6 | 31.2 |
| | 115.0 | 47.3 | 97.2 | 94.59 | 95.09 | 1.142 | 7778 | 1778 | 49.44 | 1.047 | 10.0 | 71.5 | 31.2 |
| | 115.0 | 40.8 | 99.0 | 96.07 | 96.67 | 1.149 | 7794 | 1597 | 41.78 | 0.794 | 7.6 | 70.5 | 30.8 |
| | 115.0 | 34.7 | 101.3 | 97.33 | 97.99 | 1.167 | 7808 | 1404 | 34.28 | 0.573 | 5.5 | 69.8 | 30.6 |
| | 115.0 | 29.7 | 103.5 | 98.27 | 98.98 | 1.190 | 7820 | 1209 | 27.67 | 0.398 | 3.8 | 69.2 | 30.5 |
| | 115.0 | 24.5 | 105.7 | 99.14 | 99.92 | 1.212 | 7829 | 995 | 21.74 | 0.258 | 2.5 | 68.7 | 30.4 |
| | 115.0 | 19.0 | 108.7 | 99.90 | 100.74 | 1.238 | 7830 | 765 | 14.42 | 0.131 | 1.2 | 68.2 | 30.2 |
| | 115.0 | 13.8 | 111.9 | 100.37 | 101.26 | 1.262 | 7827 | 526 | 7.88 | 0.049 | 0.5 | 67.8 | 29.9 |
| | 115.0 | 9.6 | 115.5 | 100.55 | 101.51 | 1.294 | 7819 | 262 | 4.19 | 0.013 | 0.1 | 67.6 | 29.7 |

DRAWING NO. PAGE 3 of 8 REV.
5K470BG -

Performance Data



5K470BG REV. -



Dayton

Curve Descriptions:
Motor(1) Test 3 Run 115V 60 Hz 2P

- SPEED vs TORQUE
- SPEED vs ILine
- △ SPEED vs WATTS

Motor Ratings:
(1) T063CLR229701 ID: 1
5K470BG

DRAWING NO. PAGE 4 of 8 REV. -
5K470BG

Dayton Electric Mfg. Co. Lake Forest, IL 60045 USA

Performance Data



5K470BG REV.
-

Dayton Manufacturing Company

Motor Description

Model: T063CLR229701 5K470BG
 Motor ID: 1
 Poles: 2
 Volts: 115/208-230
 Frequency: 60
 HP: 2
 Speed: 3450
 Phase: 1
 Protector: AUTO

Test Conditions

Test Type: Start
 Test Number: 10
 Poles: 2
 Volts: 230
 Hz: 60
 Rotation:
 Special Cond:
 Speed Conn:
 TestBoard: Amtps Performance Fixture #2
 Run Cap: 30 MFD 370 VOLT
 Start Cap: 208 MFD 165 VOLT
 Environment:
 Tested: 4/12/2004 10:10:04 PM
 Tested By: Crocker, Jason
 Gear Ratio: 1:1
 Bearing Friction: -0.34 Oz-Ft
 Windage Torque: -3.60 Oz-Ft

| Special Points | Vline (V) | Vaux (V) | Vcap (V) | Iline (A) | Imain (A) | Iaux (A) | Watts | RPM | Tq(Oz-ft) | HP | Eff(%) | PF(%) | Cap |
|----------------|--------------|--------------|--------------|--------------|--------------|--------------|-------------|----------|--------------|--------------|------------|-------------|--------------|
| PUT OZ-FT | 230.0 | 147.4 | 135.9 | 51.92 | 54.29 | 12.11 | 8485 | 1 | 55.51 | 0.001 | 0.0 | 71.1 | 236.4 |
| | 230.0 | 147.6 | 135.8 | 51.87 | 54.23 | 12.11 | 8483 | 2 | 54.93 | 0.001 | 0.0 | 71.1 | 236.5 |
| | 230.0 | 148.9 | 134.9 | 51.82 | 54.07 | 12.01 | 8485 | 73 | 56.98 | 0.049 | 0.4 | 71.2 | 236.3 |
| | 230.0 | 154.9 | 130.0 | 51.68 | 53.40 | 11.57 | 8471 | 357 | 56.15 | 0.238 | 2.1 | 71.3 | 236.1 |
| | 230.0 | 161.1 | 125.8 | 51.39 | 52.52 | 11.19 | 8482 | 628 | 61.17 | 0.457 | 4.0 | 71.8 | 235.9 |
| | 230.0 | 167.7 | 122.2 | 51.02 | 51.50 | 10.85 | 8498 | 879 | 68.92 | 0.721 | 6.3 | 72.4 | 235.6 |
| | 230.0 | 174.5 | 119.3 | 50.55 | 50.36 | 10.60 | 8502 | 1110 | 76.90 | 1.016 | 8.9 | 73.1 | 235.7 |
| | 230.0 | 181.2 | 119.6 | 50.18 | 49.28 | 10.62 | 8582 | 1325 | 81.87 | 1.291 | 11.2 | 74.4 | 235.6 |
| | 230.0 | 188.0 | 116.7 | 49.74 | 48.13 | 10.34 | 8603 | 1524 | 87.26 | 1.583 | 13.7 | 75.2 | 235.1 |
| | 230.0 | 195.7 | 114.6 | 49.16 | 46.79 | 10.14 | 8627 | 1709 | 96.30 | 1.959 | 16.9 | 76.3 | 234.8 |
| | 230.0 | 203.8 | 113.3 | 48.54 | 45.34 | 10.01 | 8653 | 1879 | 103.86 | 2.323 | 20.0 | 77.5 | 234.5 |
| | 230.0 | 212.3 | 112.8 | 47.97 | 43.67 | 9.91 | 8698 | 2036 | 110.46 | 2.678 | 23.0 | 78.8 | 233.1 |
| | 230.0 | 221.7 | 113.1 | 47.25 | 42.01 | 9.94 | 8724 | 2186 | 117.66 | 3.062 | 26.2 | 80.3 | 233.1 |
| | 230.0 | 231.3 | 114.5 | 46.42 | 40.34 | 10.08 | 8715 | 2322 | 124.55 | 3.443 | 29.5 | 81.6 | 233.5 |
| | 230.0 | 241.4 | 116.8 | 45.62 | 38.56 | 10.30 | 8718 | 2446 | 130.46 | 3.799 | 32.5 | 83.1 | 233.9 |
| | 230.0 | 252.0 | 120.4 | 44.80 | 36.69 | 10.61 | 8719 | 2561 | 135.24 | 4.124 | 35.3 | 84.6 | 233.7 |
| | 230.0 | 263.3 | 125.2 | 43.99 | 34.78 | 11.04 | 8727 | 2667 | 139.38 | 4.426 | 37.8 | 86.3 | 233.9 |
| | 230.0 | 274.8 | 131.2 | 43.14 | 32.82 | 11.57 | 8711 | 2765 | 142.61 | 4.694 | 40.2 | 87.8 | 234.1 |
| | 230.0 | 286.9 | 138.2 | 42.31 | 30.90 | 12.21 | 8700 | 2854 | 144.17 | 4.898 | 42.0 | 89.4 | 234.5 |
| | 230.0 | 299.2 | 146.2 | 41.47 | 28.97 | 12.95 | 8673 | 2936 | 144.32 | 5.045 | 43.4 | 90.9 | 234.9 |
| | 230.0 | 311.7 | 155.4 | 40.63 | 27.10 | 13.79 | 8631 | 3011 | 143.01 | 5.127 | 44.3 | 92.4 | 235.4 |
| | 230.0 | 324.5 | 165.2 | 39.82 | 25.32 | 14.72 | 8585 | 3079 | 140.48 | 5.150 | 44.7 | 93.7 | 236.4 |
| | 230.0 | 336.8 | 176.1 | 38.95 | 23.57 | 15.76 | 8510 | 3141 | 136.83 | 5.116 | 44.8 | 95.0 | 237.3 |
| | 230.0 | 349.4 | 187.7 | 38.04 | 21.89 | 16.90 | 8418 | 3199 | 131.78 | 5.019 | 44.5 | 96.2 | 238.8 |
| | 230.0 | 361.3 | 199.7 | 37.06 | 20.34 | 18.10 | 8285 | 3253 | 121.01 | 4.685 | 42.2 | 97.2 | 240.5 |
| | 230.0 | 371.6 | 211.0 | 35.92 | 18.89 | 19.28 | 8104 | 3302 | 111.36 | 4.377 | 40.3 | 98.1 | 242.4 |
| | 230.0 | 381.9 | 222.0 | 34.77 | 17.75 | 20.47 | 7898 | 3348 | 97.37 | 3.881 | 36.7 | 98.8 | 244.6 |
| | 230.0 | 391.3 | 232.5 | 33.66 | 16.99 | 21.62 | 7682 | 3390 | 84.71 | 3.419 | 33.2 | 99.2 | 246.7 |
| | 230.0 | 400.1 | 243.2 | 32.38 | 16.36 | 22.84 | 7418 | 3430 | 66.84 | 2.729 | 27.4 | 99.6 | 249.1 |
| | 230.0 | 407.7 | 253.3 | 30.94 | 16.07 | 23.99 | 7099 | 3469 | 48.25 | 1.993 | 20.9 | 99.8 | 251.2 |
| | 230.0 | 413.8 | 263.2 | 29.27 | 16.02 | 25.20 | 6713 | 3506 | 27.09 | 1.131 | 12.6 | 99.7 | 254.0 |
| | 230.0 | 418.2 | 270.2 | 27.67 | 16.41 | 26.17 | 6340 | 3543 | 4.92 | 0.208 | 2.4 | 99.6 | 256.9 |
| | 230.0 | 419.2 | 271.9 | 27.23 | 16.62 | 26.43 | 6233 | 3554 | 0.00 | 0.000 | 0.0 | 99.5 | 257.9 |

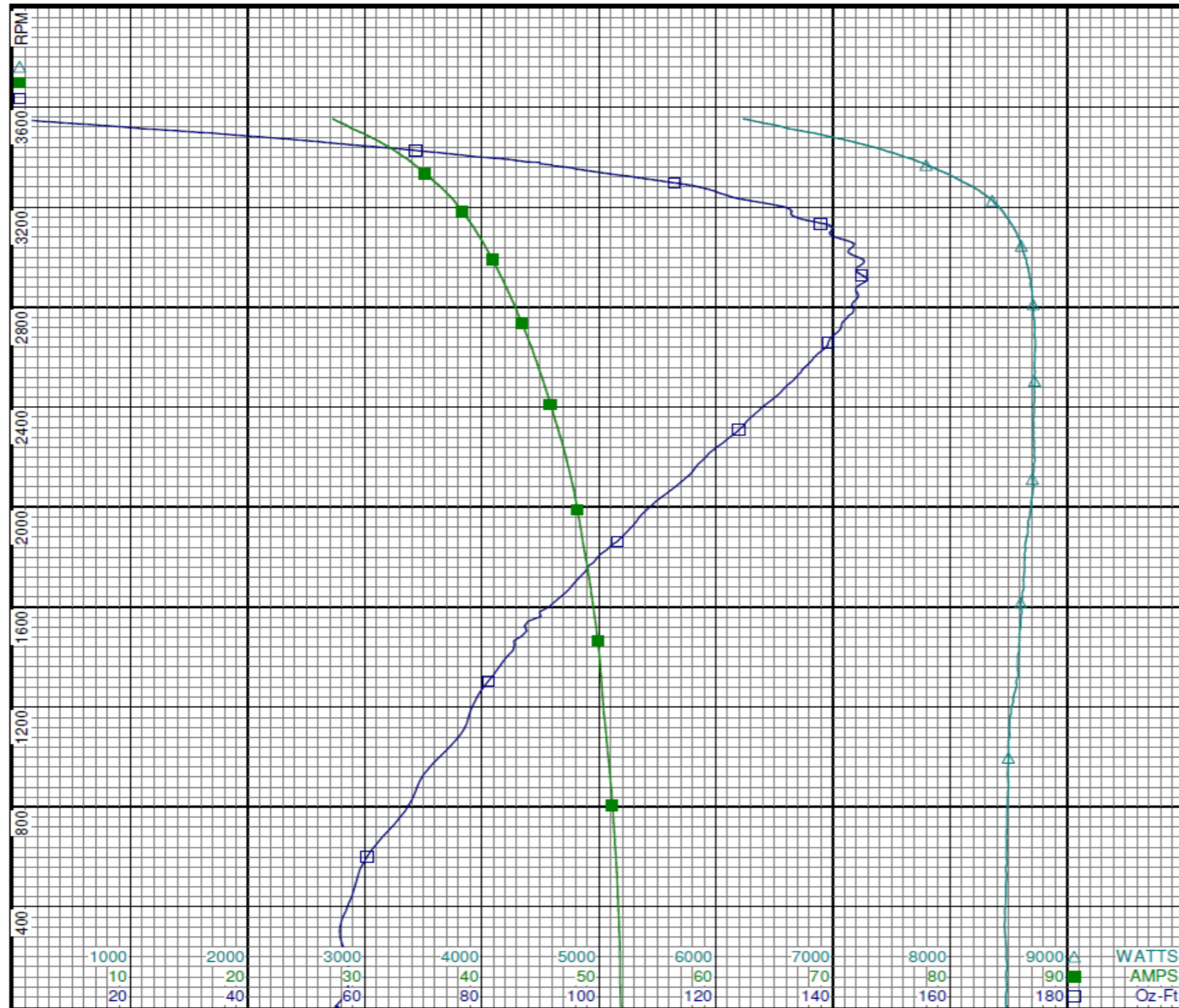
DRAWING NO. PAGE 5 of 8 REV.
5K470BG -

Dayton Electric Mfg. Co. Lake Forest, IL 60045 USA

Performance Data



5K470BG REV. -



Dayton

Curve Descriptions:
Motor(1) Test 10 Start 230V 60 Hz 2P

- SPEED vs TORQUE
- SPEED vs ILine
- △ SPEED vs WATTS

Motor Ratings:
(1) T063CLR229701 ID: 1
5K470BG

| | | |
|-------------|-------------|------|
| DRAWING NO. | PAGE 6 of 8 | REV. |
| 5K470BG | | - |

Dayton Electric Mfg. Co. Lake Forest, IL 60045 USA

Performance Data



5K470BG

REV.

-

Dayton Manufacturing Company

Motor Description

Model: T063CLR229701 5K470BG
 Motor ID: 1
 Poles: 2
 Volts: 115/208-230
 Frequency: 60
 HP: 2
 Speed: 3450
 Phase: 1
 Protector: AUTO

Test Conditions

Test Type: Run
 Test Number: 11
 Poles: 2
 Volts: 230
 Hz: 60
 Rotation:
 Special Cond:
 Speed Conn:
 TestBoard: Aamps Performance Fixture #2
 Run Cap: 30 MFD 370 VOLT
 Start Cap: 208 MFD 165 VOLT
 Environment:
 Tested: 4/12/2004 7:39:22 PM
 Tested By: Crocker, Jason
 Gear Ratio: 1:1
 Bearing Friction: -0.36 Oz-Ft
 Windage Torque: -2.91 Oz-Ft

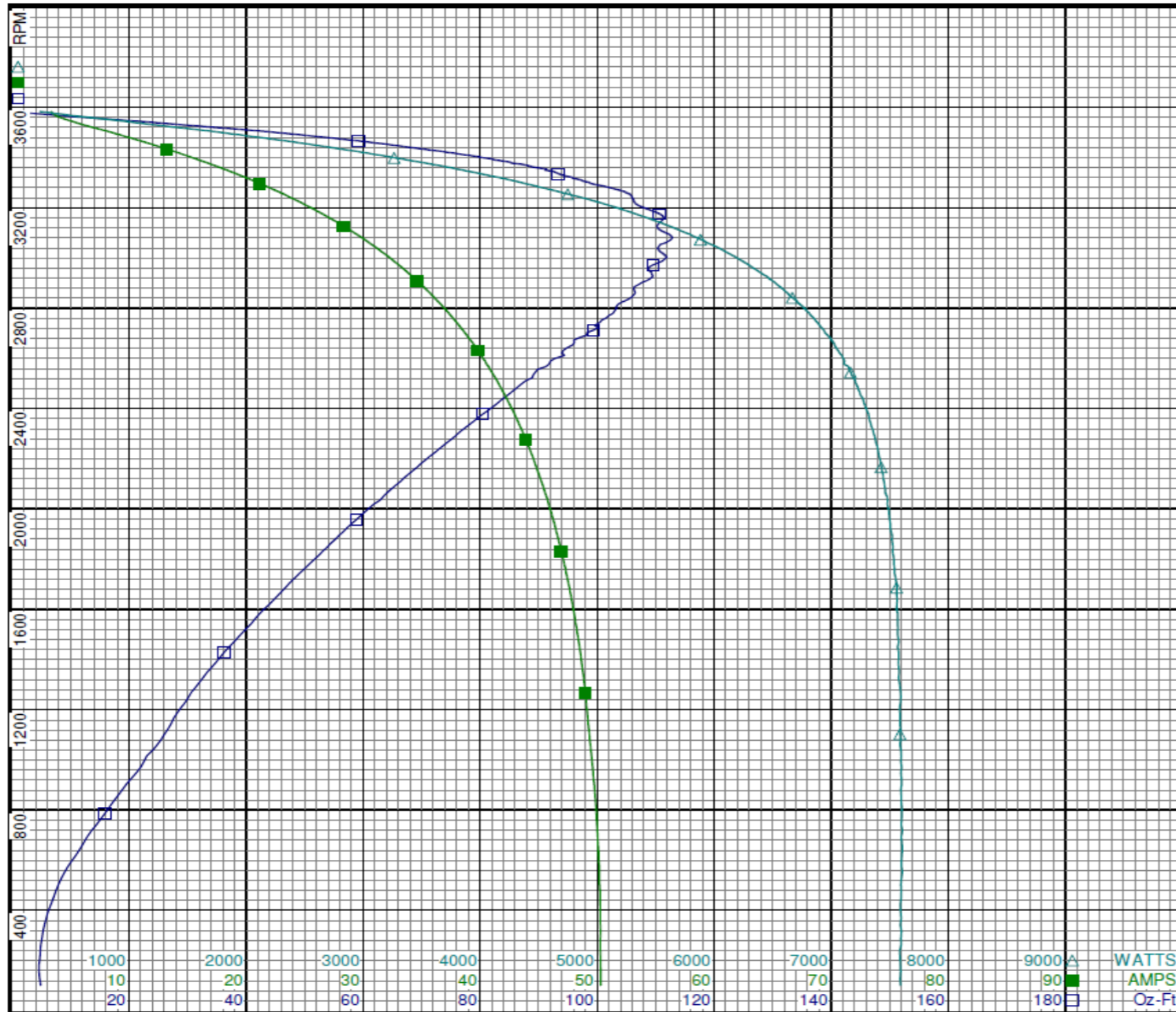
| Special Points | Vline (V) | Vaux (V) | Vcap (V) | Iline (A) | Imain (A) | Iaux (A) | Watts | RPM | Tq(Oz-ft) | HP | Eff(%) | PF(%) | Cap |
|----------------|-----------|----------|----------|-----------|-----------|----------|-------|------|-----------|-------|--------|-------|------|
| | 230.0 | 278.2 | 281.6 | 3.30 | 4.59 | 3.028 | 235 | 3583 | 0.00 | 0.000 | 0.0 | 30.9 | 28.5 |
| | 230.0 | 278.3 | 266.3 | 5.09 | 4.21 | 2.867 | 958 | 3544 | 21.64 | 0.913 | 71.1 | 81.8 | 28.6 |
| | 230.0 | 274.7 | 251.4 | 8.00 | 6.40 | 2.725 | 1675 | 3506 | 42.02 | 1.753 | 78.1 | 91.0 | 28.7 |
| 48.7 OZ-FT | 230.0 | 273.2 | 246.3 | 9.09 | 7.42 | 2.678 | 1922 | 3491 | 48.70 | 2.024 | 78.6 | 92.0 | 28.8 |
| 58.44 OZ-FT | 230.0 | 270.5 | 238.2 | 10.83 | 9.12 | 2.605 | 2308 | 3468 | 58.44 | 2.412 | 78.0 | 92.6 | 29.0 |
| | 230.0 | 270.4 | 237.6 | 10.96 | 9.25 | 2.599 | 2336 | 3466 | 59.20 | 2.443 | 78.0 | 92.6 | 29.0 |
| 3450 RPM | 230.0 | 268.5 | 232.5 | 12.04 | 10.34 | 2.551 | 2566 | 3450 | 64.59 | 2.653 | 77.1 | 92.7 | 29.1 |
| | 230.0 | 265.4 | 224.4 | 13.79 | 12.11 | 2.476 | 2939 | 3425 | 73.30 | 2.988 | 75.9 | 92.7 | 29.3 |
| | 230.0 | 260.0 | 211.7 | 16.46 | 14.87 | 2.359 | 3482 | 3381 | 85.02 | 3.422 | 73.3 | 92.0 | 29.6 |
| | 230.0 | 253.9 | 199.1 | 19.10 | 17.62 | 2.242 | 3998 | 3335 | 93.34 | 3.706 | 69.1 | 91.0 | 29.9 |
| | 230.0 | 247.5 | 187.1 | 21.65 | 20.29 | 2.130 | 4472 | 3286 | 101.02 | 3.952 | 65.9 | 89.8 | 30.2 |
| | 230.0 | 241.2 | 175.3 | 24.12 | 22.90 | 2.017 | 4928 | 3233 | 106.12 | 4.084 | 61.8 | 88.8 | 30.5 |
| | 230.0 | 234.6 | 164.1 | 26.50 | 25.43 | 1.905 | 5325 | 3175 | 110.61 | 4.181 | 58.6 | 87.4 | 30.8 |
| | 230.0 | 227.8 | 153.5 | 28.77 | 27.83 | 1.791 | 5688 | 3113 | 110.57 | 4.097 | 53.7 | 86.0 | 30.9 |
| BDT OZ-FT | 230.0 | 224.2 | 148.3 | 29.87 | 29.01 | 1.734 | 5851 | 3080 | 112.82 | 4.137 | 52.8 | 85.2 | 31.0 |
| | 230.0 | 221.0 | 143.4 | 30.92 | 30.11 | 1.681 | 6008 | 3046 | 110.55 | 4.009 | 49.8 | 84.5 | 31.1 |
| | 230.0 | 214.1 | 133.9 | 33.00 | 32.32 | 1.573 | 6294 | 2972 | 109.59 | 3.878 | 46.0 | 82.9 | 31.2 |
| | 230.0 | 207.1 | 125.6 | 34.95 | 34.40 | 1.474 | 6538 | 2892 | 107.03 | 3.685 | 42.1 | 81.3 | 31.1 |
| | 230.0 | 200.3 | 117.9 | 36.79 | 36.36 | 1.385 | 6754 | 2806 | 103.24 | 3.449 | 38.1 | 79.8 | 31.2 |
| | 230.0 | 193.6 | 111.4 | 38.50 | 38.19 | 1.304 | 6936 | 2712 | 99.36 | 3.208 | 34.5 | 78.3 | 31.0 |
| | 230.0 | 187.1 | 105.9 | 40.08 | 39.89 | 1.235 | 7090 | 2610 | 94.35 | 2.932 | 30.8 | 76.9 | 30.9 |
| | 230.0 | 180.7 | 101.7 | 41.56 | 41.47 | 1.180 | 7211 | 2499 | 87.09 | 2.591 | 26.8 | 75.4 | 30.8 |
| | 230.0 | 174.5 | 98.4 | 42.92 | 42.92 | 1.135 | 7317 | 2378 | 80.47 | 2.278 | 23.2 | 74.1 | 30.6 |
| | 230.0 | 168.7 | 96.2 | 44.13 | 44.23 | 1.103 | 7393 | 2249 | 73.49 | 1.967 | 19.8 | 72.8 | 30.4 |
| | 230.0 | 163.0 | 95.0 | 45.22 | 45.44 | 1.082 | 7452 | 2108 | 66.30 | 1.664 | 16.7 | 71.6 | 30.2 |
| | 230.0 | 157.5 | 94.9 | 46.22 | 46.51 | 1.072 | 7498 | 1957 | 58.83 | 1.371 | 13.6 | 70.5 | 30.0 |
| | 230.0 | 152.2 | 95.4 | 47.10 | 47.46 | 1.072 | 7536 | 1795 | 51.51 | 1.101 | 10.9 | 69.6 | 29.8 |
| | 230.0 | 146.9 | 96.8 | 47.88 | 48.29 | 1.085 | 7560 | 1619 | 43.88 | 0.846 | 8.3 | 68.6 | 29.7 |
| | 230.0 | 141.9 | 98.6 | 48.55 | 49.03 | 1.102 | 7576 | 1428 | 36.23 | 0.616 | 6.1 | 67.9 | 29.7 |
| | 230.0 | 137.4 | 100.6 | 49.05 | 49.59 | 1.122 | 7591 | 1230 | 29.57 | 0.433 | 4.3 | 67.3 | 29.6 |
| | 230.0 | 133.3 | 102.6 | 49.49 | 50.11 | 1.144 | 7598 | 1016 | 22.98 | 0.278 | 2.7 | 66.7 | 29.6 |
| | 230.0 | 128.7 | 105.2 | 49.91 | 50.58 | 1.166 | 7604 | 787 | 15.83 | 0.148 | 1.5 | 66.2 | 29.4 |
| | 230.0 | 124.4 | 108.2 | 50.16 | 50.90 | 1.191 | 7607 | 552 | 8.93 | 0.059 | 0.6 | 65.9 | 29.2 |
| | 230.0 | 119.9 | 111.6 | 50.25 | 51.05 | 1.222 | 7595 | 289 | 5.04 | 0.017 | 0.2 | 65.7 | 29.0 |

DRAWING NO. PAGE 7 of 8 REV.
5K470BG -

Performance Data



5K470BG REV. -



Curve Descriptions:
 Motor(1) Test 11 Run 230V 60 Hz 2P

- SPEED vs TORQUE
- SPEED vs ILine
- △ SPEED vs WATTS

Motor Ratings:
 (1) T063CLR229701 ID: 1
 5K470BG

DRAWING NO. PAGE 8 of 8 REV.
5K470BG -

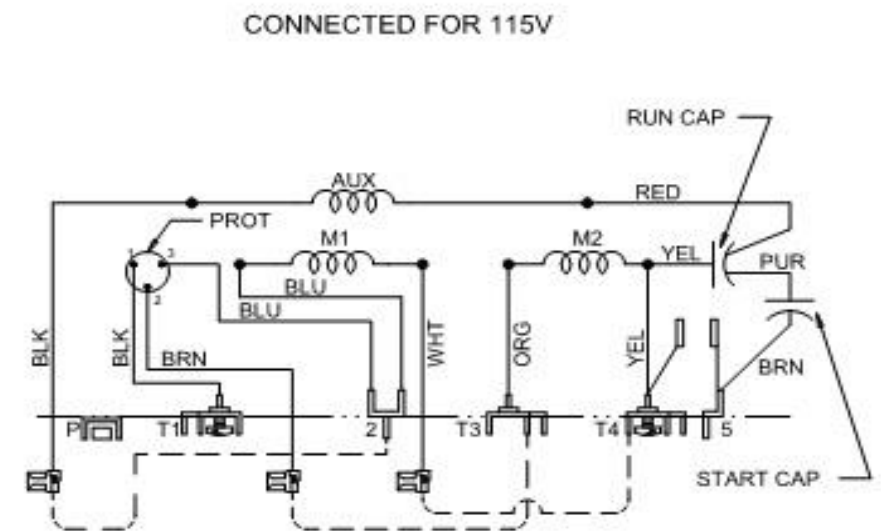
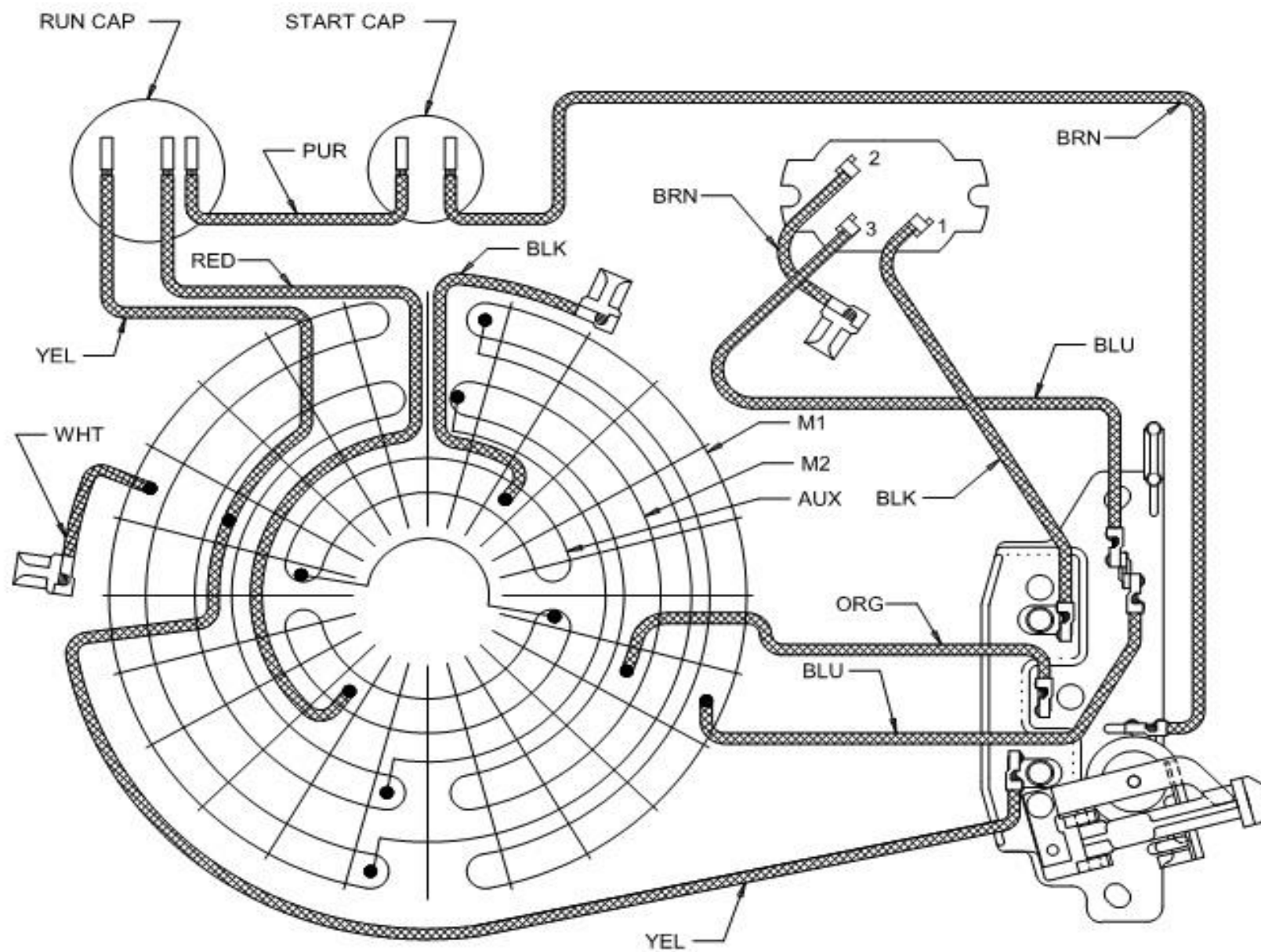
Dayton Electric Mfg. Co. Lake Forest, IL 60045 USA

©2019 W.W. Grainger, Inc. This design may not be reproduced, modified or redistributed without written permission from W.W. Grainger, Inc.

Wiring Diagram



5K470BG REV. -



L1 TO T1
L2 TO T4
FOR HIGH VOLTAGE
BRN TO P
BLK TO 3
WHT TO 3

T 2P DUAL VOLT NON REV W/CAPS & PROT

ROTATION: CW SWITCH END

| | | |
|-------------|-------------|------|
| DRAWING NO. | PAGE 1 of 1 | REV. |
| 5K470BG | | - |

Dayton Electric Mfg. Co. Lake Forest, IL 60045 USA

Dayton[®]

JET PUMP MOTOR

HP: 2

VOLTS: 115/208-230

AMPS: 19.6/10.7-9.8

RPM: 3450

DUTY: CONT

SF: 1.2

KVA CODE: G

ENCL: ODP

THERMALLY PROTECTED: AUTO

MFG. NO. PROT. CODE: AVG. F.L.
EFF. 82.9

MTR REF: T63CXCLR-2297

Part
No 5K470BG

PH: 1

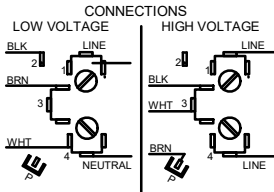
HZ: 60

FR: 56C

INS CL: B

AMB: 40 °C

SFA: 22.2/12.2-11.1

**Disconnect Power Before Making
Any Electrical Connections or Changes****MOTOR IS NON-REVERSIBLE
CCW ROTATION SHAFT END**SUPPLY CONNECTIONS, USE WIRES SIZED
ON THE BASIS OF 60°C AMPACITY AND
RATED MINIMUM 90°C.

E37403



258501

Mfd for Dayton Electric Mfg. Co., Lake Forest, IL 60045 USA

Made in Mexico