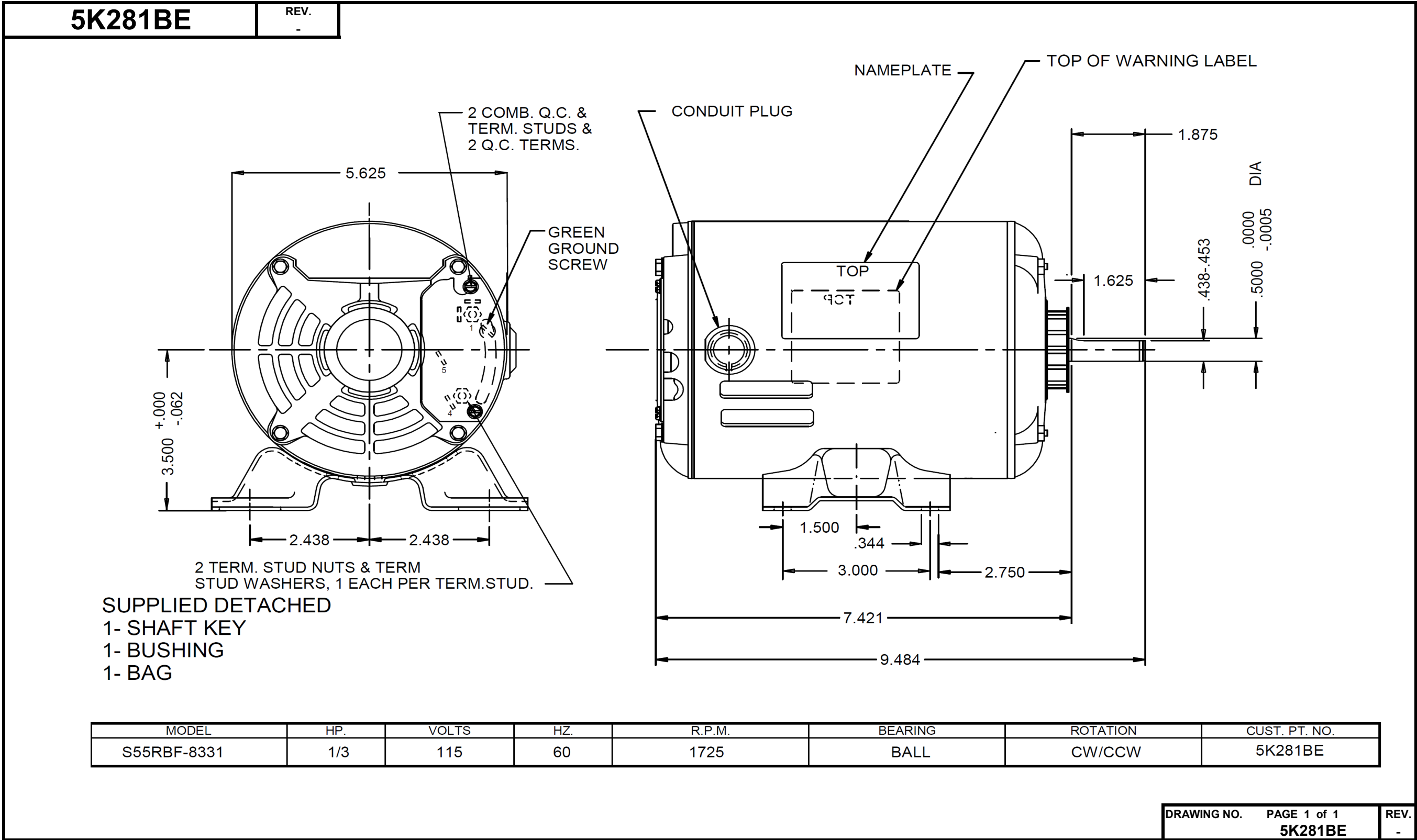


Dimensional Drawing



Dayton Electric Mfg. Co. Lake Forest, IL 60045 USA

©2019 W.W. Grainger, Inc. This design may not be reproduced, modified or redistributed without written permission from W.W. Grainger, Inc.



5K281BE

REV.
-

SPLIT-PHASE & CAPACITOR START MOTOR PERFORMANCE

HP:	1/3							
Poles:	4							
Ambient (°C):	40							
Altitude (FASL):								
No. of Speeds:	1							
Volts:	115	115						
HZ:	60	60						
Service Factor:	1.35							
Efficiency:	@ Rated Load	54.30						
Power Factor:	@ Rated Load	56.70						
Amps:	@ No Load	6.51						
	@ Rated Load	7.01						
	@ Service Factor	7.86						
	@ Locked Rotor	53.84						
RPM:	@ Rated Load	1747						
Torques:	Breakdown	46.3						
	Locked Rotor	39.89						
	Pull-Up	34.94						
	Rated Load	16.01						
	Service Factor	21.94						
Watts:	Rated Load	457						
KVA Code:							T	
Temperature Rise:	@ Rated Load	56.00						
	@ Service Factor	63.10						
Thermal Protector:	Trip Temp (°C)	N/A						
Winding Material:	Start (Auxiliary)						Al	
	Run (Main)						Al	
Capacitor(s):	Start (MFD / Volts)							
	No. of Start Capacitors							
	Run (MFD / Volts)							
	No. of Run Capacitors							

LOW SPEED PERFORMANCE DATA:

HP:								
Poles:								
Volts:								
HZ:								
Efficiency:	@ Rated Load							
Power Factor:	@ Rated Load							
Amps:	@ No Load							
	@ Rated Load							
	@ Service Factor							
	@ Locked Rotor							
Torques:	BreakDown							
	Locked Rotor							
	Pull-Up							
	Rated Load							
	Service Factor							
Watts:	@ Rated Load							
Temperature Rise:	@ Rated Load							
	@ Service Factor							

DRAWING NO. PAGE 1 of 1
5K281BE

REV.
-

Performance Data

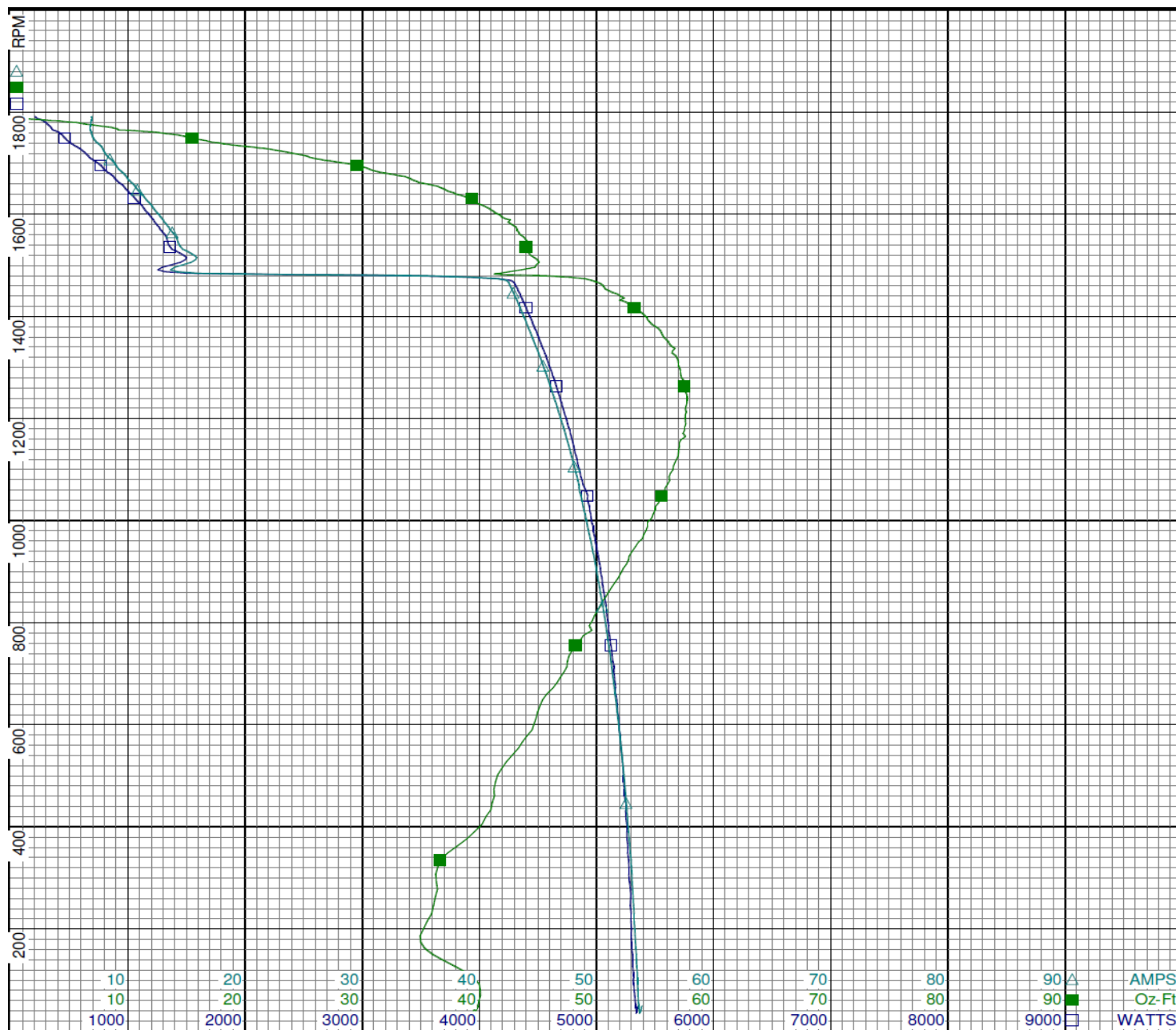


5K281BE		REV.
Dayton Manufacturing Company		
Motor Description		Test Conditions
Model:	S055RBF833101	Test Type: Start
Motor ID:	Motor 1	Test Number: 2
Poles:	4	Poles: 4
Volts:	115	Volts: 115
Frequency:	60	Hz: 60
HP:	1/3	Rotation:
Speed:	1725	Special Cond:
Phase:	1	Speed Conn:
Protector:		TestBoard: Amps Performance Fixture #4
		Environment: 21.4 Deg C 14 % RH 999 hPa
		Tested: 1/18/2012 1:39:57 PM
		Tested By: Sharp, Gerald
		Bearing Friction: -0.66 Oz-Ft
		Windage Torque: -1.94 Oz-Ft
Special Points	Vline (V)	Iline (A)
	115.0	53.84
	115.0	53.60
	115.0	53.31
PUT OZ-FT	115.0	53.28
	115.0	52.93
	115.0	52.40
	115.0	51.75
	115.0	51.10
	115.0	50.38
	115.0	49.60
	115.0	48.79
	115.0	48.02
	115.0	47.16
	115.0	46.30
	115.0	45.43
	115.0	44.59
	115.0	43.75
	115.0	42.97
	115.0	35.53
	115.0	15.85
	115.0	14.02
	115.0	12.90
	115.0	11.96
	115.0	11.05
	115.0	10.19
	115.0	9.43
	115.0	8.76
	115.0	8.02
	115.0	7.54
	115.0	6.93
	115.0	6.75
	115.0	6.89
	115.0	6.88
		Watts
		5350
		5334
		5298
		5295
		5274
		5230
		5179
		5130
		5069
		5001
		4931
		4838
		4761
		4679
		4593
		4511
		4427
		4348
		3480
		1497
		1317
		1208
		1111
		1010
		912
		817
		726
		634
		526
		439
		339
		233
		206
		RPM
		47
		51
		174
		186
		335
		488
		625
		745
		851
		949
		1034
		1113
		1183
		1246
		1303
		1354
		1401
		1443
		1479
		1515
		1558
		1591
		1618
		1642
		1664
		1684
		1703
		1720
		1737
		1755
		1770
		1787
		1791
		Tq (Oz-ft)
		39.89
		39.88
		34.99
		34.94
		36.66
		41.38
		44.96
		47.89
		50.79
		53.31
		55.26
		56.67
		57.53
		57.70
		56.98
		55.96
		54.10
		51.79
		45.67
		44.67
		43.57
		42.22
		40.11
		37.78
		34.69
		31.27
		27.66
		23.91
		18.49
		14.17
		8.53
		1.21
		0.000
		HP
		0.022
		0.024
		0.072
		0.078
		0.146
		0.241
		0.334
		0.425
		0.515
		0.602
		0.680
		0.751
		0.810
		0.856
		0.884
		0.902
		0.902
		0.890
		0.804
		0.806
		0.808
		0.800
		0.773
		0.739
		0.687
		0.627
		0.561
		0.489
		0.382
		0.296
		0.180
		0.026
		0.000
		Eff (%)
		0.3
		0.3
		1.0
		1.1
		2.1
		3.4
		4.8
		6.2
		7.6
		9.0
		10.3
		11.6
		12.7
		13.6
		14.4
		14.9
		15.2
		15.3
		17.2
		40.1
		45.8
		49.4
		51.9
		54.6
		56.2
		57.2
		57.6
		57.6
		54.2
		50.3
		39.5
		8.2
		0.0
		PF (%)
		86.4
		86.5
		86.4
		86.4
		86.6
		86.8
		87.0
		87.3
		87.5
		87.7
		87.9
		87.6
		87.8
		87.9
		87.9
		88.0
		88.0
		88.0
		85.2
		82.1
		81.7
		81.4
		80.8
		79.5
		77.9
		75.3
		72.1
		68.8
		60.7
		55.1
		43.7
		29.4
		26.1
DRAWING NO.		PAGE 1 of 4
5K281BE		REV.
-		-

Performance Data



5K281BE REV. -



DRAWING NO. PAGE 2 of 4 REV.
5K281BE -

Dayton Electric Mfg. Co. Lake Forest, IL 60045 USA

Performance Data



5K281BE	REV. -
----------------	-----------

Dayton Manufacturing Company

Motor Description

Model: S055RBF833101
Motor ID: Motor 1
Poles: 4
Volts: 115
Frequency: 60
HP: 1/3
Speed: 1725
Phase: 1
Protector:

Test Conditions

Test Type: Run
Test Number: 4
Poles: 4
Volts: 115
Hz: 60
Rotation:
Special Cond:
Speed Conn:
TestBoard: Aamps Performance Fixture #4
Environment: 21.4 Deg C 14 % RH 999 hPa
Tested: 1/18/2012 1:39:07 PM
Tested By: Sharp, Gerald
Bearing Friction: -0.43 Oz-Ft
Windage Torque: -1.84 Oz-Ft

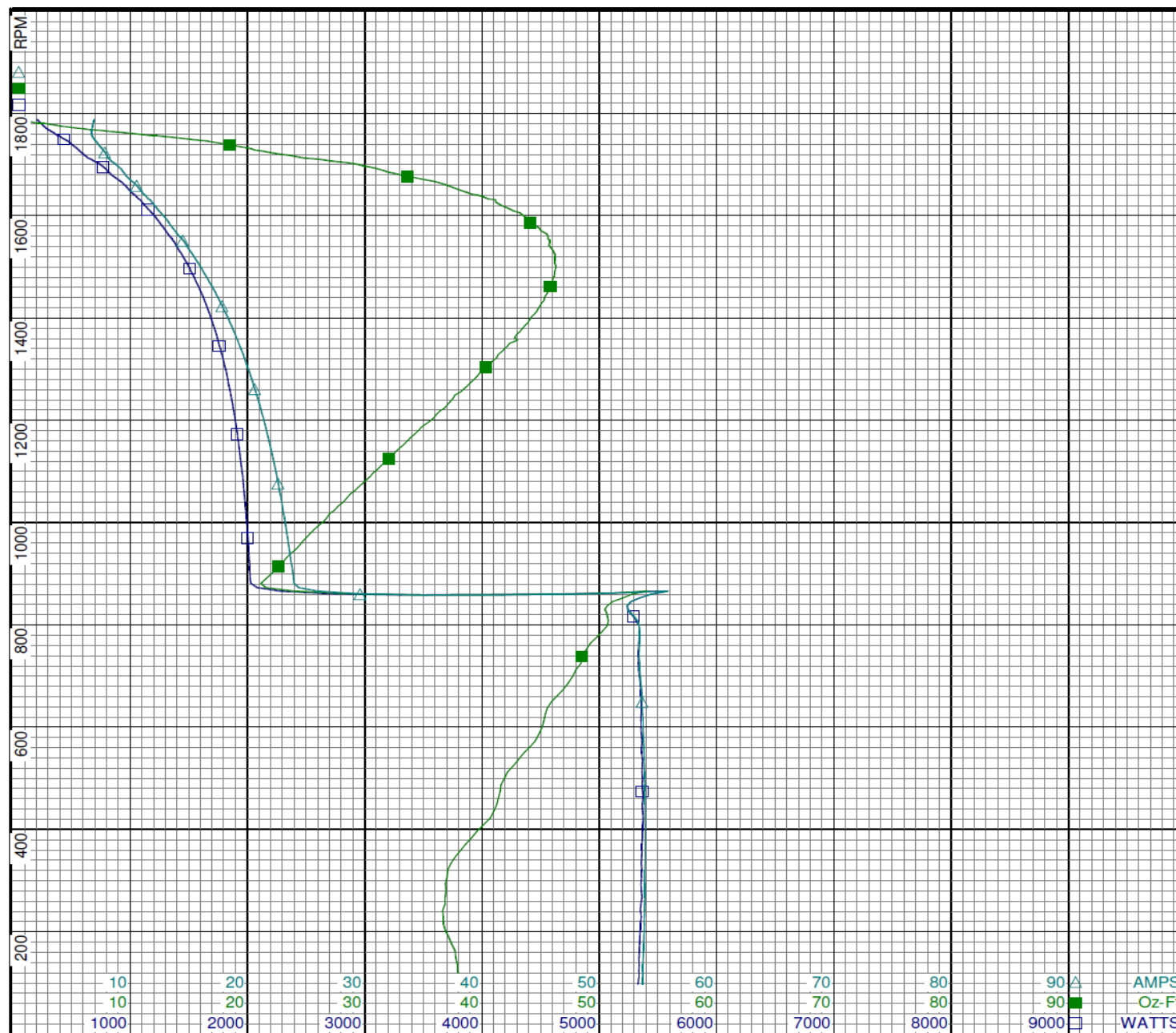
Special Points	Vline (V)	Iline (A)	Watts	RPM	Tq (Oz-ft)	HP	Eff (%)	PF (%)
	115.0	6.89	204	1788	0.00	0.000	0.0	25.7
	115.0	6.78	263	1775	4.04	0.085	24.2	33.7
	115.0	6.70	331	1764	8.58	0.180	40.6	43.0
	115.0	6.86	423	1751	14.32	0.299	52.7	53.6
0.333 HP	115.0	7.01	457	1747	16.01	0.333	54.3	56.7
	115.0	7.37	517	1736	18.92	0.391	56.5	60.9
1725 RPM	115.0	7.80	573	1725	21.50	0.442	57.4	64.0
0.45 HP	115.0	7.86	584	1723	21.94	0.450	57.5	64.6
	115.0	8.00	613	1717	23.79	0.486	59.1	66.6
	115.0	8.79	745	1700	29.46	0.596	59.7	73.7
	115.0	9.68	856	1677	33.67	0.672	58.6	76.9
	115.0	10.78	983	1652	37.88	0.745	56.5	79.3
	115.0	11.95	1111	1623	41.36	0.799	53.7	80.8
	115.0	13.14	1235	1591	43.86	0.831	50.2	81.7
	115.0	14.60	1373	1549	45.75	0.844	45.8	81.8
	115.0	15.57	1462	1515	46.20	0.833	42.5	81.7
BDT OZ-FT	115.0	15.94	1495	1501	46.28	0.827	41.3	81.6
	115.0	16.73	1562	1470	45.99	0.805	38.4	81.2
	115.0	17.84	1652	1423	44.92	0.761	34.4	80.5
	115.0	18.84	1728	1373	43.22	0.706	30.5	79.8
	115.0	19.72	1789	1322	41.24	0.649	27.1	78.9
	115.0	20.53	1842	1267	38.74	0.584	23.7	78.0
	115.0	21.25	1886	1211	36.12	0.521	20.6	77.2
	115.0	21.90	1925	1152	33.31	0.457	17.7	76.4
	115.0	22.50	1959	1090	30.45	0.395	15.1	75.7
	115.0	23.02	1983	1025	27.44	0.335	12.6	74.9
	115.0	23.50	2008	955	24.44	0.278	10.3	74.3
	115.0	23.97	2028	881	21.16	0.222	8.2	73.6
	115.0	55.85	5548	866	54.10	0.558	7.5	86.4
	115.0	53.23	5313	808	50.76	0.488	6.9	86.8
	115.0	53.48	5343	699	47.70	0.397	5.5	86.9
	115.0	53.74	5358	586	44.85	0.313	4.4	86.7
	115.0	53.88	5368	475	41.54	0.235	3.3	86.6
	115.0	53.91	5362	359	38.17	0.163	2.3	86.5
	115.0	53.85	5350	242	36.65	0.105	1.5	86.4
	115.0	53.69	5335	123	37.90	0.055	0.8	86.4

DRAWING NO.	PAGE 3 of 4	REV.
5K281BE		-

Performance Data



5K281BE REV. -



Dayton

Curve Descriptions:
Motor(1) Test 4 Run 115V 60 Hz 4P

- SPEED vs WATTS
- SPEED vs TORQUE
- △ SPEED vs ILine

Motor Ratings:
S055RBF833101 ID: Motor 1

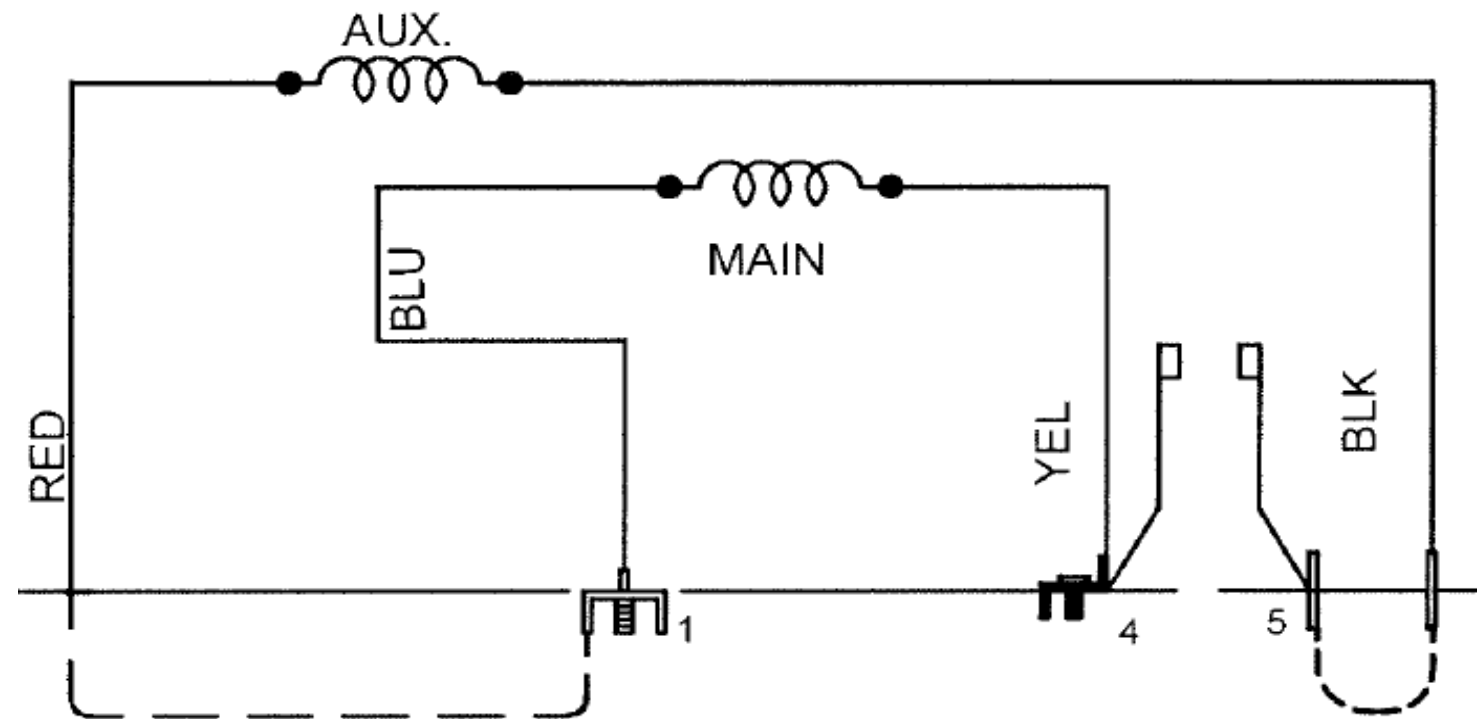
DRAWING NO. PAGE 4 of 4 REV.
5K281BE -

Dayton Electric Mfg. Co. Lake Forest, IL 60045 USA

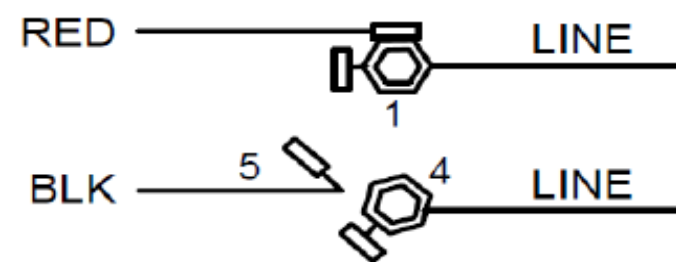
Wiring Diagram



5K281BE REV. -



CONNECTIONS



TO REVERSE ROTATION
INTERCHANGE RED & BLK LEADS

DRAWING NO. PAGE 1 of 1 REV.
5K281BE -

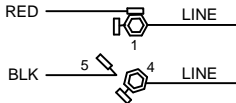
Dayton Electric Mfg. Co. Lake Forest, IL 60045 USA

Dayton[®]Part No **5K281BE****SPLIT PHASE
MOTOR****HP:** 1/3**PH:** 1**VOLTS:** 115**HZ:** 60**AMPS:** 7.0**FR:** 56Z**RPM:** 1725**INS CL:** B**DUTY:** CONT**AMB:** 40 °C**SF:** 1.35**SFA:** 7.8**KVA CODE:** T**ENCL:** ODP**MTR REF:** S55RBF-8331**THERMALLY PROTECTED:** NONEMFG. NO.  

258501



E47479

**Disconnect Power Before Making
Any Electrical Connections or Changes****CONNECTIONS****TO REVERSE ROTATION
INTERCHANGE RED & BLK LEADS**

Mfd for Dayton Electric Mfg. Co., Lake Forest, IL 60045 USA

Made in Mexico