

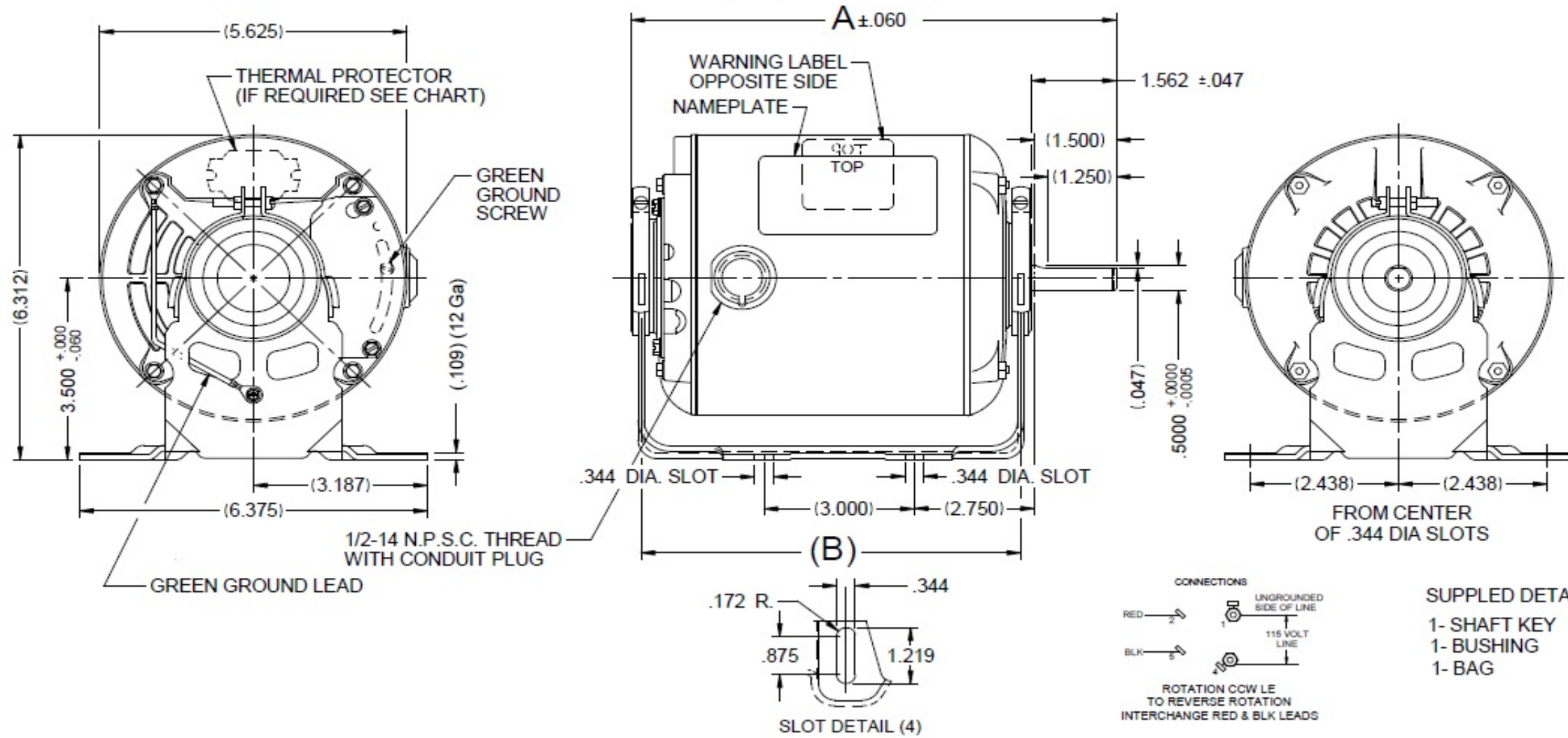
Dimensional Drawing



5K258BG

REV.
-

VAR	MODEL	CUST. PT. NO.	A	B	C	D	HP	VOLTS	SF	AMPS	HZ	RPM	CONN VOLTS	PROT.	DESCRIPTION / REMARKS
001	S55CXGWWG-8508	5K258BG	9.901	7.931	---	---	1/2	115	1.25	7.9	60	1725	--	AUTO	56Z, ODP, BALL BEARING



DRAWING NO. PAGE 1 of 1 REV.
5K258BG -

Dayton Electric Mfg. Co. Lake Forest, IL 60045 USA

Performance Data



5K258BG

REV.
X

MOTOR PERFORMANCE

HP:	1/2HP							
Poles:	4							
Ambient (°C)	40							
Altitude (FASL):								
No. of Speeds:	1							
Volts:	115	115						
HZ:	60	60						
Service Factor:	1.25							
Efficiency:	@ Rated Load	66						
Power Factor:	@ Rated Load	66.2						
Amps:	@ No Load							
	@ Rated Load	7.47						
	@ Service Factor	8.01						
	@ Locked Rotor	30.68						
RPM:	@ Rated Load	1738						
Torques: Oz.Ft. / Lb.In. (Circle One)	Breakdown	55.99						
	Locked Rotor	31.2						
	Pull-Up	29						
	Rated Load	24.3						
	Service Factor	0.576						
Watts:	@ Rated Load	568						
KVA Code:								
Temperature Rise:	@ Rated Load	42.5						
	@ Service Factor	50.3						
Thermal Protector:	Trip Temp (°C)							
Winding Material:	Start (Auxiliary)					Al		
	Run (Main)					Co		
Capacitor(s):	Start (MFD / Volts)					N/A		
	No. of Start Capacitors							
	Run (MFD / Volts)					N/A		
	No. of Run Capacitors							

LOW SPEED PERFORMANCE DATA:

HP:								
Poles:								
Volts:								
HZ:								
Efficiency:	@ Rated Load							
Power Factor:	@ Rated Load							
Amps:	@ No Load							
	@ Rated Load							
	@ Service Factor							
	@ Locked Rotor							
Torques: Oz.Ft. / Lb.In. (Circle One)	Breakdown							
	Locked Rotor							
	Pull-Up							
	Rated Load							
	Service Factor							
Watts:	@ Rated Load							
Temperature Rise:	@ Rated Load							
	@ Service Factor							

DRAWING NO. PAGE 1 of 2 REV.
5K258BG X

Dayton Electric Mfg. Co. Lake Forest, IL 60045 USA

Performance Data



5K258BG	REV. -
----------------	-----------

Dayton Manufacturing Company

Motor Description

Model: S0555GWG8508 5K258BG
 Motor ID: 1
 Poles: 4
 Volts: 115
 Frequency: 60
 HP: 1/2
 Speed: 1725
 Phase: 1
 Protector: CEJ38EY

Test Conditions

Test Type: Start
 Test Number: 3
 Poles: 4
 Volts: 115
 Hz: 60
 Rotation:
 Special Cond:
 Speed Conn:
 TestBoard: Amtps Performance Fixture #4
 Run Cap: 0
 Start Cap: 0µfd
 Environment: 20.6 Deg C 36 % RH 992 hPa
 Tested: 10/9/2012 4:11:11 PM
 Tested By: Sharp, Gerald
 Gear Ratio: 1:1
 Bearing Friction: 0.00 Oz-Ft
 Windage Torque: -0.78 Oz-Ft

Special Points	Vline (V)	Iline (A)	Imain (A)	Iaux (A)	Watts	RPM	Tq (Oz-ft)	HP	Eff (%)	PF (%)
	115.0	40.71	30.68	10.821	3474	42	31.20	0.016	0.3	74.2
	115.0	40.65	30.65	10.801	3461	40	30.70	0.015	0.3	74.0
	115.0	40.58	30.70	10.602	3462	149	29.42	0.052	1.1	74.2
PUT OZ-FT	115.0	40.55	30.74	10.467	3459	225	29.00	0.078	1.7	74.2
	115.0	40.45	30.70	10.336	3456	297	30.15	0.107	2.3	74.3
	115.0	40.20	30.59	10.070	3448	436	33.34	0.173	3.7	74.6
	115.0	39.83	30.39	9.787	3431	569	36.18	0.245	5.3	74.9
	115.0	39.39	30.10	9.532	3413	684	38.66	0.315	6.9	75.3
	115.0	38.89	29.75	9.289	3393	788	41.50	0.389	8.6	75.9
	115.0	38.35	29.35	9.055	3367	883	44.14	0.464	10.3	76.3
	115.0	37.76	28.93	8.833	3334	970	46.27	0.534	12.0	76.8
	115.0	37.11	28.44	8.633	3298	1048	48.21	0.601	13.6	77.3
	115.0	36.43	27.91	8.455	3258	1118	49.67	0.661	15.1	77.8
	115.0	35.71	27.35	8.309	3212	1184	50.77	0.716	16.6	78.2
	115.0	34.96	26.75	8.201	3162	1243	51.27	0.759	17.9	78.6
	115.0	34.21	26.14	8.135	3109	1297	51.19	0.790	19.0	79.0
	115.0	33.45	25.51	8.113	3054	1345	50.69	0.811	19.8	79.4
	115.0	32.69	24.86	8.132	2998	1389	49.70	0.822	20.4	79.7
	115.0	31.94	24.21	8.184	2940	1428	48.27	0.821	20.8	80.0
	115.0	31.19	23.51	8.274	2877	1465	46.47	0.811	21.0	80.2
	115.0	30.43	22.83	8.396	2810	1499	44.52	0.795	21.1	80.3
	115.0	29.71	22.18	8.541	2750	1528	41.51	0.755	20.5	80.5
	115.0	29.00	21.50	8.714	2682	1557	38.59	0.715	19.9	80.4
	115.0	28.32	20.85	8.901	2618	1583	35.59	0.671	19.1	80.4
	115.0	27.65	20.20	9.106	2555	1607	32.27	0.617	18.0	80.3
	115.0	27.03	19.58	9.319	2492	1629	28.66	0.556	16.6	80.2
	115.0	26.41	18.94	9.541	2428	1649	25.11	0.493	15.1	79.9
	115.0	25.79	18.29	9.781	2362	1669	20.80	0.413	13.0	79.6
	115.0	25.18	17.64	10.033	2297	1688	16.40	0.330	10.7	79.3
	115.0	24.58	16.95	10.292	2228	1705	11.80	0.240	8.0	78.8
	115.0	24.02	16.28	10.560	2159	1723	7.14	0.146	5.1	78.2
	115.0	23.44	15.67	10.808	2100	1738	2.42	0.050	1.8	77.9
	115.0	23.17	15.32	10.948	2065	1747	0.00	0.000	0.0	77.5

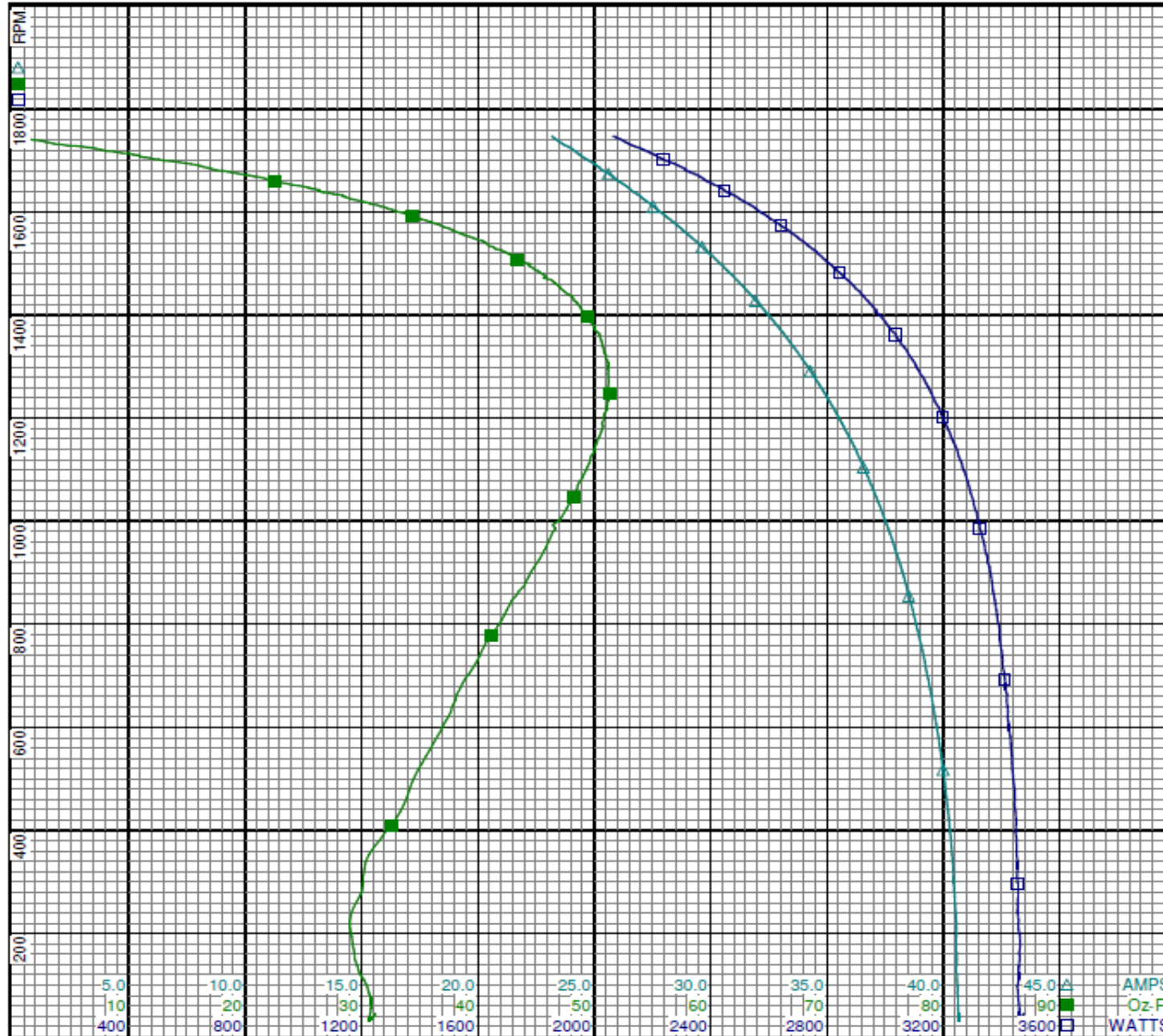
DRAWING NO.	PAGE 1 of 4	REV.
5K258BG		-

Dayton Electric Mfg. Co. Lake Forest, IL 60045 USA

Performance Data



5K258BG REV. -



Dayton

Curve Descriptions:
Motor(1) Test 3 Start 115V 60 Hz 4P

- SPEED vs WATTS
- SPEED vs TORQUE
- △ SPEED vs ILine

Motor Ratings:
S0555GWG8508 5K258BG

DRAWING NO. PAGE 2 of 4 REV.
5K258BG -

Dayton Electric Mfg. Co. Lake Forest, IL 60045 USA

Performance Data



5K258BG	REV. -
----------------	-----------

Dayton Manufacturing Company

Motor Description

Model: S0555GWG8508 5K258BG
 Motor ID: 1
 Poles: 4
 Volts: 115
 Frequency: 60
 HP: 1/2
 Speed: 1725
 Phase: 1
 Protector: CEJ38EY

Test Conditions

Test Type: Run
 Test Number: 4
 Poles: 4
 Volts: 115
 Hz: 60
 Rotation:
 Special Cond:
 Speed Conn:
 TestBoard: Amtps Performance Fixture #4
 Run Cap: 0
 Start Cap: 0µfd
 Environment: 20.6 Deg C 36 % RH 992 hPa
 Tested: 10/9/2012 3:45:27 PM
 Tested By: Sharp, Gerald
 Gear Ratio: 1:1
 Bearing Friction: -0.50 Oz-Ft
 Windage Torque: -1.70 Oz-Ft

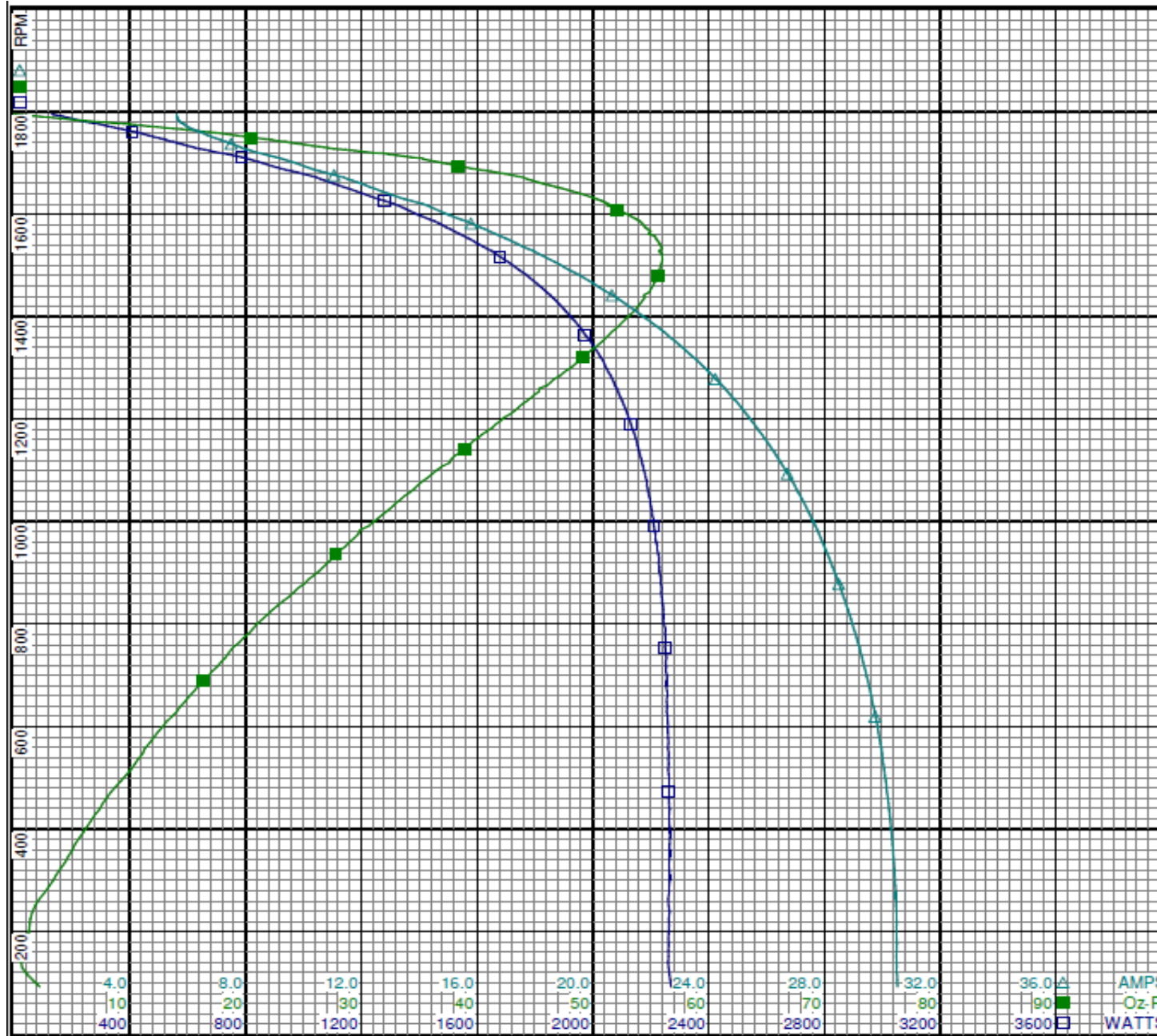
Special Points	Vline (V)	Iline (A)	Watts	RPM	Tq(Oz-ft)	HP	Eff (%)	PF (%)
	115.0	5.61	130	1795	0.00	0.000	0.0	20.1
	115.0	5.66	207	1785	4.55	0.097	34.8	31.8
	115.0	5.87	297	1776	9.95	0.210	52.9	43.9
	115.0	6.30	399	1762	15.76	0.331	61.9	55.0
	115.0	6.96	501	1749	20.96	0.436	64.9	62.7
24.3 OZ-FT	115.0	7.47	568	1738	24.30	0.503	66.0	66.2
0.5 HP	115.0	7.44	565	1739	24.16	0.500	66.0	66.0
	115.0	7.78	613	1732	26.39	0.544	66.2	68.5
28 OZ-FT	115.0	8.01	649	1727	28.00	0.576	66.2	70.4
1725 RPM	115.0	8.10	663	1725	28.82	0.592	66.6	71.1
	115.0	8.79	756	1715	33.09	0.675	66.6	74.8
	115.0	10.00	889	1694	38.31	0.773	64.8	77.3
	115.0	11.39	1045	1672	43.99	0.875	62.5	79.8
	115.0	12.94	1206	1640	48.92	0.955	59.1	81.0
	115.0	14.45	1345	1612	51.86	0.995	55.2	80.9
	115.0	15.96	1482	1578	54.39	1.022	51.4	80.7
	115.0	17.55	1618	1538	55.89	1.023	47.2	80.2
BDT OZ-FT	115.0	18.50	1693	1512	55.99	1.008	44.4	79.6
	115.0	19.19	1746	1491	55.72	0.989	42.2	79.1
	115.0	20.66	1852	1442	54.43	0.935	37.7	77.9
	115.0	21.93	1935	1392	52.71	0.874	33.7	76.7
	115.0	23.08	2005	1340	50.22	0.801	29.8	75.5
	115.0	24.14	2062	1284	47.15	0.721	26.1	74.3
	115.0	25.03	2106	1229	43.88	0.642	22.7	73.1
	115.0	25.85	2144	1170	40.41	0.563	19.6	72.1
	115.0	26.58	2174	1107	36.97	0.487	16.7	71.1
	115.0	27.23	2198	1043	33.40	0.415	14.1	70.2
	115.0	27.82	2216	975	29.74	0.345	11.6	69.3
	115.0	28.35	2230	903	26.35	0.283	9.5	68.4
	115.0	28.81	2244	828	22.32	0.220	7.3	67.7
	115.0	29.25	2251	745	18.57	0.165	5.5	66.9
	115.0	29.62	2256	658	15.10	0.118	3.9	66.2
	115.0	29.93	2261	567	11.69	0.079	2.6	65.7
	115.0	30.16	2261	472	8.38	0.047	1.6	65.2
	115.0	30.36	2265	371	5.29	0.023	0.8	64.9
	115.0	30.47	2260	263	2.18	0.007	0.2	64.5
	115.0	30.50	2262	151	0.65	0.001	0.0	64.5

DRAWING NO.	PAGE 3 of 4	REV.
	5K258BG	-

Performance Data



5K258BG REV. -



Dayton

Curve Descriptions:
Motor(1) Test 4 Run 115V 60 Hz 4P

- SPEED vs WATTS
- SPEED vs TORQUE
- △ SPEED vs ILine

Motor Ratings:
S0555GWG8508 5K258BG

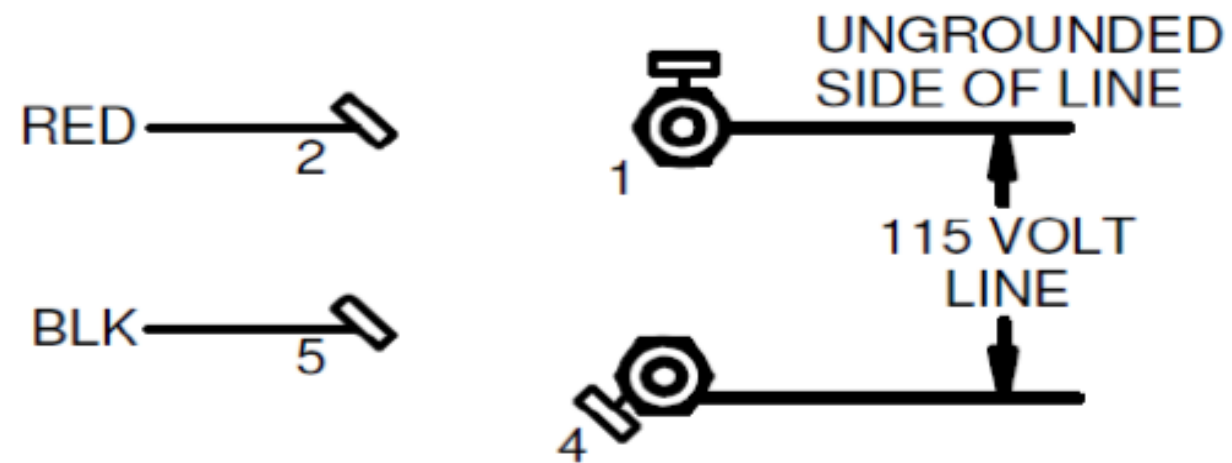
DRAWING NO. PAGE 4 of 4 REV.
5K258BG -

Dayton Electric Mfg. Co. Lake Forest, IL 60045 USA

5K258BG

REV.
-

CONNECTIONS



ROTATION CCW LE
TO REVERSE ROTATION
INTERCHANGE RED & BLK LEADS

DRAWING NO.	PAGE 1 of 1	REV.
5K258BG		-

Dayton[®]

BELT DRIVE FAN & BLOWER MOTOR

HP: 1/2

VOLTS: 115

AMPS: 7.9

RPM: 1725

DUTY: CONT

SF: 1.25

KVA CODE: K

ENCL: ODP

THERMALLY PROTECTED: AUTO

MFG. NO. PROT. CODE: 00F50

MTR REF: S55CXGWG-8508



Part No 5K258BG

PH: 1

HZ: 60

FR: 56Z

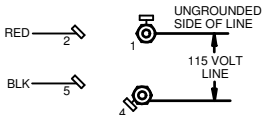
INS CL: B

AMB: 40 °C

SFA: 8.8

AVG. F.L.
EFF.**Disconnect Power Before Making Any
Electrical Connections or Changes**

CONNECTIONS



ROTATION CCW LE
TO REVERSE ROTATION
INTERCHANGE RED & BLK LEADS



Mfd for Dayton Electric Mfg. Co., Lake Forest, IL 60045 USA

Made in Mexico