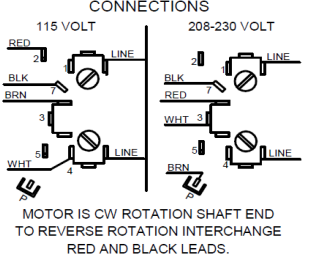
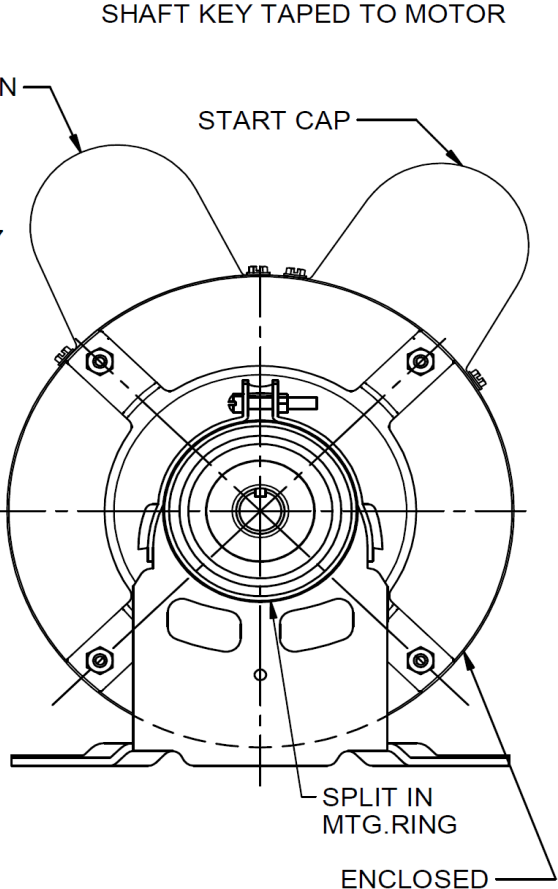
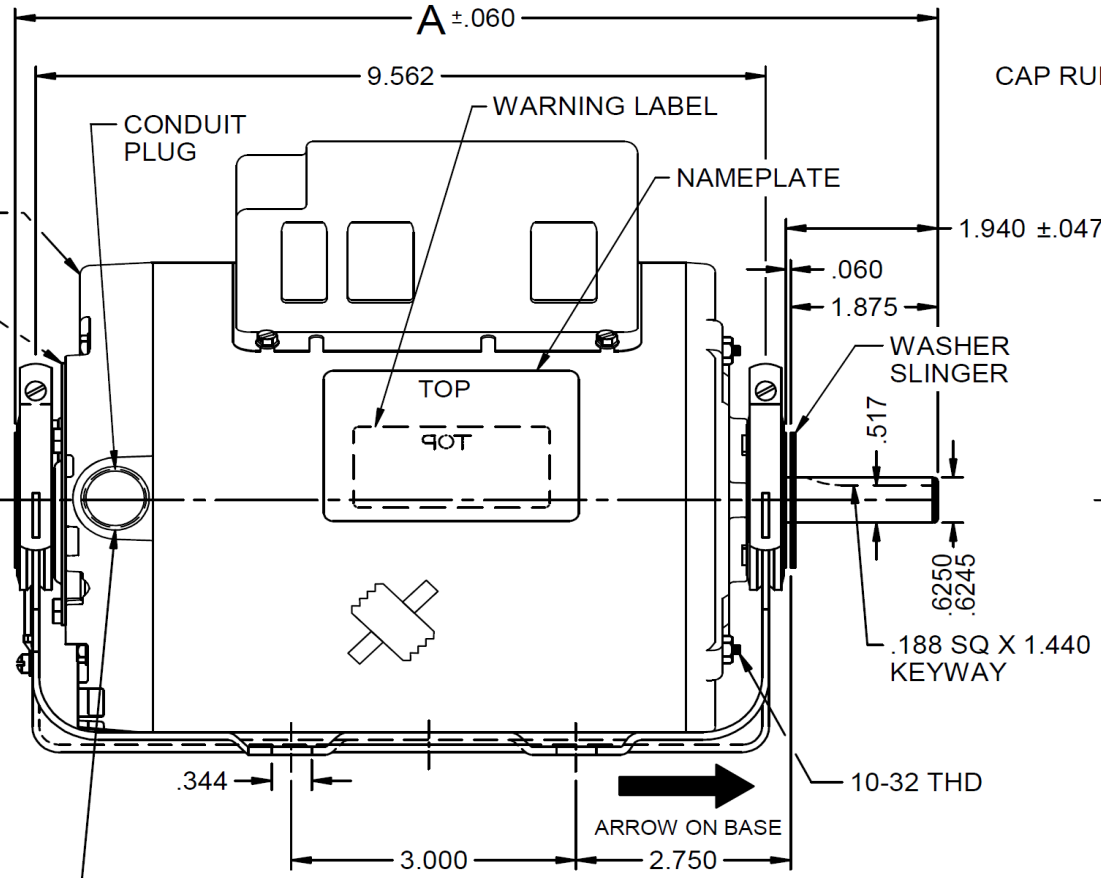
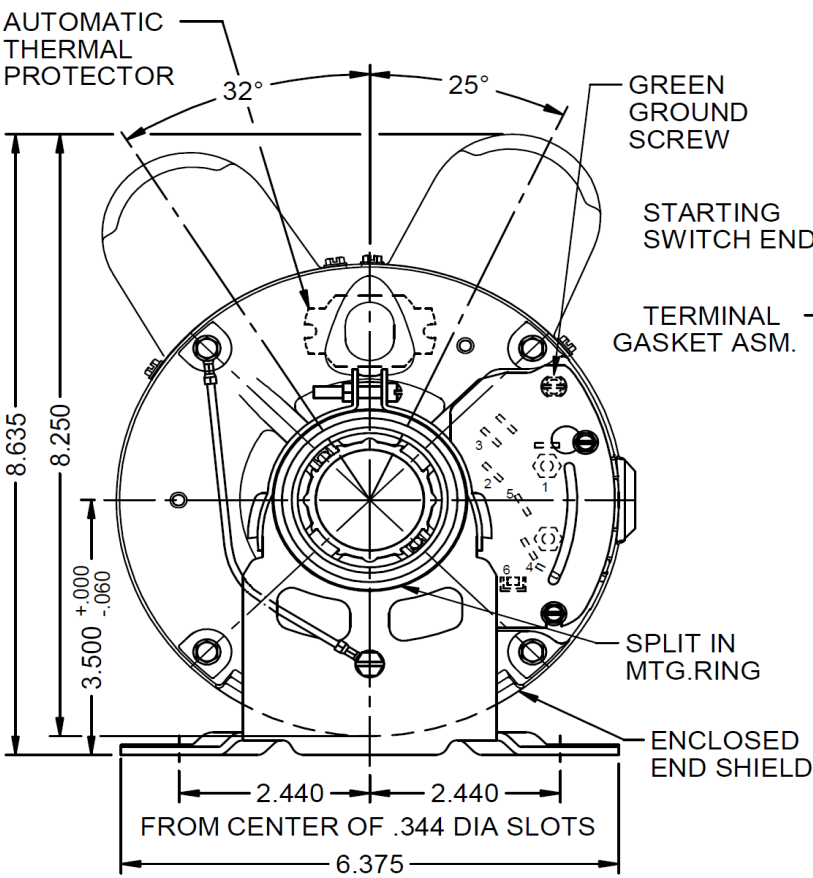


Dimensional Drawing

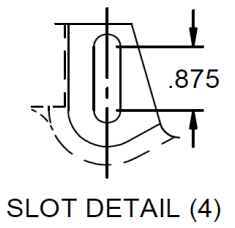


5JKW9BG	REV. -
----------------	-----------

VAR	MODEL	CUST. PT. NO.	A	B	C	D	HP	VOLTS	SF	AMPS	HZ	RPM	CONN VOLTS	PROT.	DESCRIPTION / REMARKS
001	T63CXCPN-2330	5JKW9BG	11.785	-----	-----	-----	1/2	115/208-230	1.4	4.6/2.6-2.4	60	1725	---	AUTO	56,TEAO, GREEN BALL BEARING



1/2-14 NPSM THREAD WITH CONDUIT PLUG



DRAWING NO.	PAGE 1 of 1	REV.
	5JKW9BG	-

Dayton Electric Mfg. Co. Lake Forest, IL 60045 USA

Performance Data



5JKW9BG

REV.
-

MOTOR PERFORMANCE

HP:	1/2							
Poles:	4							
No. of Speeds:	1							
Volts:	115/208-230	115	208	230				
HZ:	60	60	60	60				
Service Factor:	1.4							
Efficiency:	@ Rated Load	81.5	80.7	79.7				
Power Factor:	@ Rated Load	95.7	97.0	96.1				
Amps:	@ No Load							
	@ Rated Load	4.2	2.3	2.2				
	@ Service Factor	5.74	3.28	2.9				
	@ Locked Rotor	43.4	20.8	24.4				
RPM:	@ Rated Load	1763	1756	1763				
Ambient (°C):	40							
Altitude (FASL):								
Torques:	Breakdown	84.5	1.2	83.9				
	Locked Rotor	120.5	92.6	123				
	Pull-Up	116.5	87.2	117.2				
	Rated Load	24.3	24.3	24.3				
	Service Factor	34	34	34				
Watts:	Rated Load	467	470	477				
KVA Code:	N	L	K	N				
Temperature Rise:	@ Rated Load	43	41.8	43				
	@ Service Factor	53.3	61.7	53.3				
Thermal Protector:	Trip Temp (°C)	112.7	122	121.7				
Winding Material:	Start (Auxiliary)	Cu	Cu	Cu				
	Run (Main)	Cu	Cu	Cu				
Capacitor(s):	Start (MFD / Volts)	503						
	No. of Start Capacitors							
	Run (MFD / Volts)	50						
	No. of Run Capacitors							
LOW SPEED PERFORMANCE DATA:								
HP:								
Poles:								
Volts:								
HZ:								
Efficiency:	@ Rated Load							
Power Factor:	@ Rated Load							
Amps:	@ No Load							
	@ Rated Load							
	@ Service Factor							
	@ Locked Rotor							
Torques:	Bead Down							
	Locked Rotor							
	Pull-Up							
	Rated Load							
	Service Factor							
Watts:	@ Rated Load							
Temperature Rise:	@ Rated Load							
	@ Service Factor							

DRAWING NO. PAGE 1 of 1 REV.
5JKW9BG -

Dayton Electric Mfg. Co. Lake Forest, IL 60045 USA

Performance Data



5JKW9BG

REV.

-

Dayton Manufacturing Company

Motor Description

Model: T63CPN-2330 5JKW9BG
 Motor ID: 1
 Poles: 4
 Volts: 115/208-230
 Frequency: 60
 HP: 1/2
 Speed: 1725
 Phase: 1
 Protector: AUTO

Test Conditions

Test Type: Start
 Test Number: 1
 Poles: 4
 Volts: 115
 Hz: 60
 Rotation: CCW
 Special Cond:
 Speed Conn:
 TestBoard: Amps Performance Fixture #1
 Run Cap: 50 MFD 370 VOLT
 Start Cap: 594 MFD 220 VOLT
 Environment: 22.0 Deg C 10 % RH 1010 hPa
 Tested: 12/15/2016 1:36:06 PM
 Tested By: Sharp, Gerald
 Gear Ratio: 1:1
 Bearing Friction: -0.23 Oz-Ft
 Windage Torque: -2.03 Oz-Ft

Special Points	Vline (V)	Iline (A)	Watts	RPM	Tq(Oz-ft)	HP	Eff (%)	PF (%)
	115.0	43.36	4935	9	120.51	0.012	0.2	99.0
	115.0	43.32	4931	57	126.11	0.085	1.3	99.0
PUT OZ-FT	115.0	43.18	4919	158	116.45	0.219	3.3	99.1
	115.0	43.23	4926	212	122.27	0.308	4.7	99.1
	115.0	43.30	4935	357	131.02	0.557	8.4	99.1
	115.0	43.61	4976	490	136.50	0.796	11.9	99.2
	115.0	44.15	5051	613	147.82	1.079	15.9	99.5
	115.0	44.22	5067	727	156.39	1.353	19.9	99.7
	115.0	44.10	5064	829	164.19	1.621	23.9	99.8
	115.0	44.10	5067	925	171.31	1.885	27.8	99.9
	115.0	44.22	5087	1013	178.03	2.146	31.5	100.0
	115.0	44.45	5118	1094	184.25	2.400	35.0	100.1
	115.0	44.77	5158	1168	189.37	2.633	38.1	100.2
	115.0	45.17	5204	1236	192.85	2.837	40.7	100.2
	115.0	45.61	5252	1297	194.70	3.006	42.7	100.1
	115.0	46.11	5309	1354	195.19	3.146	44.2	100.1
	115.0	46.66	5365	1405	192.78	3.224	44.8	100.0
	115.0	47.25	5424	1451	189.33	3.270	45.0	99.8
	115.0	36.70	3997	1489	134.67	2.387	44.6	94.7
	115.0	21.51	2198	1517	85.02	1.536	52.1	88.8
	115.0	19.08	1983	1558	82.41	1.529	57.5	90.4
	115.0	17.21	1811	1593	80.08	1.519	62.6	91.5
	115.0	15.43	1645	1623	75.43	1.458	66.1	92.7
	115.0	13.67	1474	1651	70.11	1.378	69.7	93.8
	115.0	11.87	1292	1676	64.78	1.293	74.7	94.6
	115.0	10.00	1096	1701	55.89	1.132	77.1	95.3
	115.0	8.06	887	1724	46.14	0.947	79.6	95.7
	115.0	6.26	690	1745	36.50	0.758	82.0	95.9
	115.0	4.41	480	1765	24.47	0.514	79.9	94.7
	115.0	2.64	267	1785	11.15	0.237	66.1	88.0
	115.0	1.59	89	1800	0.00	0.000	0.0	48.8

DRAWING NO.	PAGE 1 of 8	REV.
5JKW9BG		-

Dayton Electric Mfg. Co. Lake Forest, IL 60045 USA

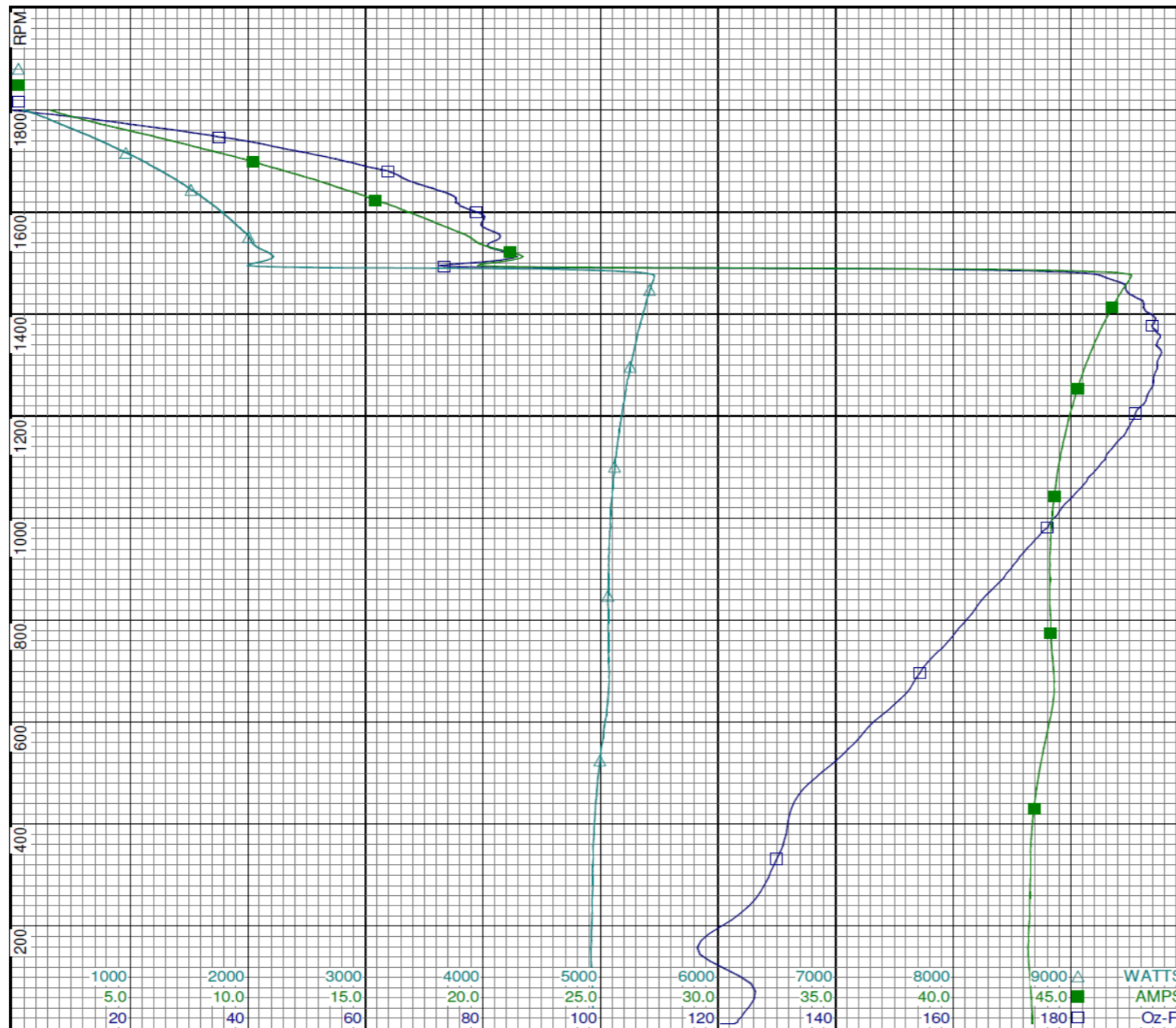
Performance Data



5JKW9BG

REV.

-



Curve Descriptions:

Motor(1) Test 1 Start 115V 60 Hz 4P
CCW 50ufd Run 491ufd Run

- SPEED vs TORQUE
- SPEED vs ILine
- △ SPEED vs WATTS

Motor Ratings:

(1) T063CXCPN233001 ID: 1
5JKW9BG

DRAWING NO.	PAGE 2 of 8	REV.
5JKW9BG		-

Dayton Electric Mfg. Co. Lake Forest, IL 60045 USA

Performance Data



5JKW9BG

REV.

-

Dayton Manufacturing Company

Motor Description

Model: T63CPN-2330 5JKW9BG
 Motor ID: 1
 Poles: 4
 Volts: 115/208-230
 Frequency: 60
 HP: 1/2
 Speed: 1725
 Phase: 1
 Protector: AUTO

Test Conditions

Test Type: Run
 Test Number: 2
 Poles: 4
 Volts: 115
 Hz: 60
 Rotation: CCW
 Special Cond:
 Speed Conn:
 TestBoard: Amtps Performance Fixture #1
 Run Cap: 50 MFD 370 VOLT
 Start Cap: 594 MFD 220 VOLT
 Environment: 22.0 Deg C 10 % RH 1010 hPa
 Tested: 12/15/2016 1:26:16 PM
 Tested By: Sharp, Gerald
 Gear Ratio: 1:1
 Bearing Friction: -0.28 Oz-Ft
 Windage Torque: -1.36 Oz-Ft

Special Points	Vline(V)	Iline(A)	Watts	RPM	Tq(Oz-ft)	HP	Eff(%)	PF(%)
	115.0	1.35	91	1794	0.00	0.000	0.0	58.5
	115.0	2.80	298	1776	13.99	0.296	74.0	92.5
24.3 OZ-FT	115.0	4.24	467	1763	24.30	0.510	81.5	95.7
0.5 HP	115.0	4.17	459	1764	23.81	0.500	81.3	95.6
	115.0	4.94	547	1757	28.99	0.606	82.7	96.4
34 OZ-FT	115.0	5.74	638	1748	34.00	0.708	82.8	96.5
	115.0	6.64	738	1737	39.39	0.815	82.4	96.7
1725 RPM	115.0	7.96	884	1725	46.81	0.961	81.1	96.6
	115.0	8.62	956	1718	50.12	1.025	80.0	96.4
	115.0	10.41	1147	1696	58.80	1.187	77.2	95.8
	115.0	12.23	1334	1673	66.63	1.327	74.3	94.8
	115.0	13.98	1511	1649	71.65	1.407	69.5	94.0
	115.0	15.72	1680	1623	77.71	1.502	66.7	93.0
	115.0	17.40	1840	1595	79.98	1.519	61.6	92.0
	115.0	19.07	1988	1564	82.29	1.533	57.5	90.7
BDT OZ-FT	115.0	20.51	2114	1534	84.47	1.543	54.5	89.6
	115.0	20.67	2125	1531	84.24	1.535	53.9	89.4
	115.0	22.25	2254	1494	84.41	1.502	49.7	88.1
	115.0	23.77	2367	1455	82.98	1.437	45.3	86.6
	115.0	25.20	2468	1412	79.91	1.343	40.6	85.2
	115.0	26.57	2559	1366	76.70	1.247	36.4	83.7
	115.0	27.86	2637	1316	72.89	1.142	32.3	82.3
	115.0	29.07	2708	1261	68.16	1.023	28.2	81.0
	115.0	30.19	2763	1202	62.81	0.899	24.3	79.6
	115.0	31.22	2809	1138	57.06	0.773	20.5	78.2
	115.0	32.18	2850	1068	50.74	0.645	16.9	77.0
	115.0	33.04	2876	995	44.14	0.523	13.6	75.7
	115.0	33.82	2901	914	37.04	0.403	10.4	74.6
	115.0	34.89	2989	828	32.11	0.316	7.9	74.5
	115.0	44.20	5107	757	161.23	1.452	21.2	100.5
	115.0	44.41	5089	652	150.98	1.172	17.2	99.6
	115.0	44.16	5043	542	142.22	0.918	13.6	99.3
	115.0	43.58	4970	426	132.12	0.670	10.1	99.2
	115.0	43.40	4949	305	129.31	0.469	7.1	99.1
	115.0	43.35	4940	175	120.31	0.251	3.8	99.1

DRAWING NO.	PAGE 3 of 8	REV.
5JKW9BG		-

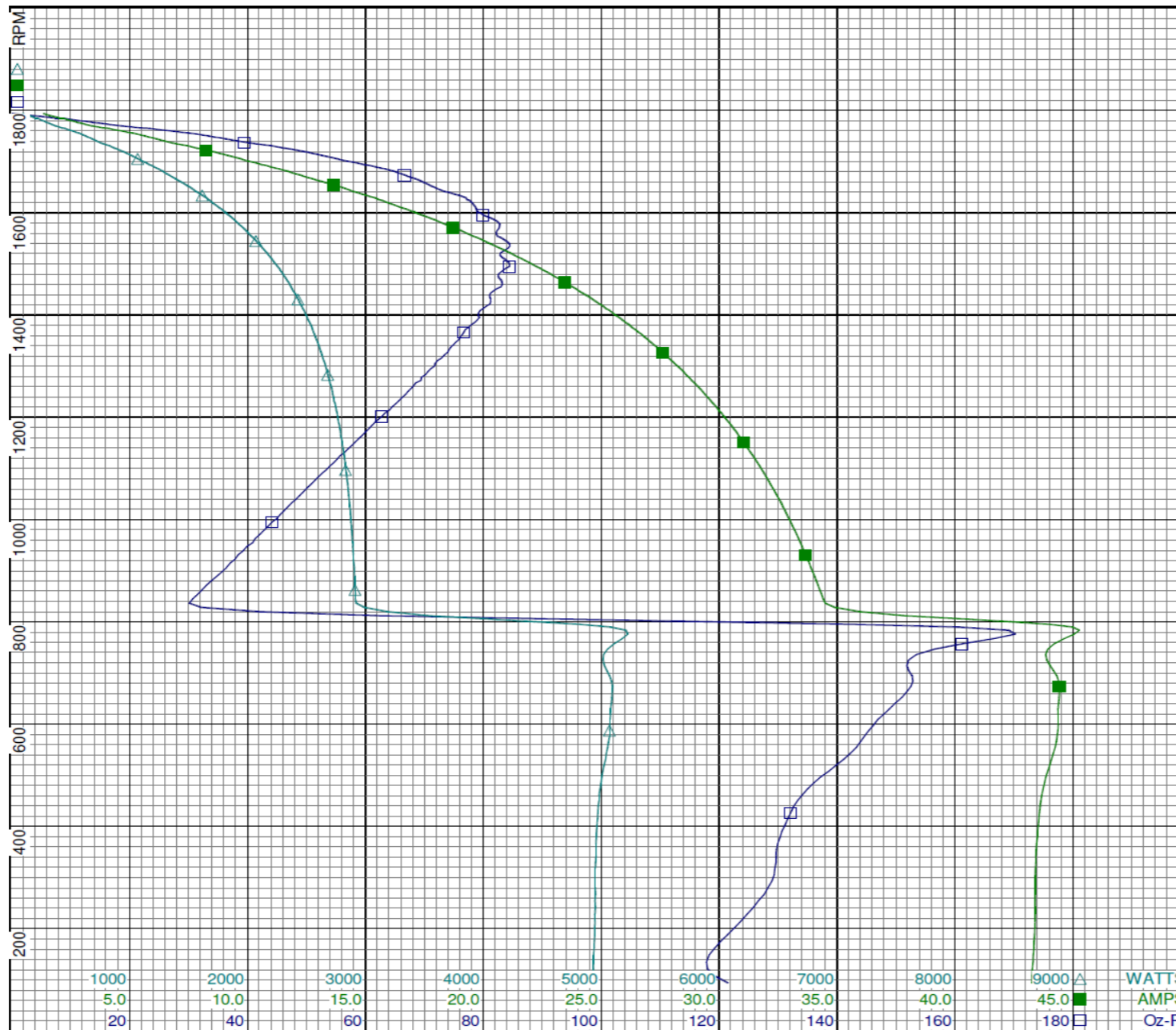
Performance Data



5JKW9BG

REV.

-



Curve Descriptions:

Motor(1) Test 2 Run 115V 60 Hz 4P
CCW 50ufd Run

- SPEED vs TORQUE
- SPEED vs ILine
- △ SPEED vs WATTS

Motor Ratings:

(1) T063CXCPN233001 ID: 1
5JKW9BG

DRAWING NO.	PAGE 4 of 8	REV.
5JKW9BG		-

Dayton Electric Mfg. Co. Lake Forest, IL 60045 USA

Performance Data



5JKW9BG

REV.

-

Dayton Manufacturing Company

Motor Description

Model: T63CPN-2330 5JKW9BG
 Motor ID: 1
 Poles: 4
 Volts: 115/208-230
 Frequency: 60
 HP: 1/2
 Speed: 1725
 Phase: 1
 Protector: AUTO

Test Conditions

Test Type: Start
 Test Number: 10
 Poles: 4
 Volts: 240
 Hz: 60
 Rotation: CCW
 Special Cond:
 Speed Conn:
 TestBoard: Amtps Performance Fixture #1
 Run Cap: 50 MFD 370 VOLT
 Start Cap: 594 MFD 220 VOLT
 Environment: 22.0 Deg C 10 % RH 1011 hPa
 Tested: 12/15/2016 12:44:26 PM
 Tested By: Sharp, Gerald
 Gear Ratio: 1:1
 Bearing Friction: -0.21 Oz-Ft
 Windage Torque: -2.29 Oz-Ft

Special Points	Vline (V)	Iline (A)	Watts	RPM	Tq(Oz-ft)	HP	Eff(%)	PF(%)
	240.0	24.39	5594	9	123.03	0.013	0.2	95.6
	240.0	24.35	5595	57	128.54	0.088	1.2	95.7
PUT OZ-FT	240.0	24.22	5556	158	117.17	0.220	3.0	95.6
	240.0	24.26	5564	212	123.20	0.311	4.2	95.6
	240.0	24.20	5566	358	131.07	0.558	7.5	95.8
	240.0	24.17	5566	489	136.17	0.793	10.6	95.9
	240.0	24.21	5598	613	146.86	1.071	14.3	96.4
	240.0	24.25	5629	726	156.25	1.351	17.9	96.7
	240.0	24.06	5612	830	163.05	1.611	21.4	97.2
	240.0	23.97	5617	925	170.00	1.872	24.9	97.6
	240.0	23.93	5622	1013	176.41	2.128	28.2	97.9
	240.0	23.88	5631	1094	181.72	2.367	31.4	98.3
	240.0	23.82	5636	1168	185.84	2.583	34.2	98.6
	240.0	23.77	5635	1236	188.28	2.771	36.7	98.8
	240.0	23.73	5640	1297	189.41	2.925	38.7	99.0
	240.0	23.70	5646	1354	188.65	3.041	40.2	99.3
	240.0	23.68	5652	1404	185.23	3.097	40.9	99.4
	240.0	23.68	5659	1451	181.83	3.140	41.4	99.6
	240.0	11.07	2295	1477	81.70	1.437	46.7	86.4
	240.0	10.96	2333	1521	88.31	1.599	51.1	88.7
	240.0	10.08	2180	1559	87.99	1.633	55.9	90.2
	240.0	9.11	1999	1594	85.83	1.628	60.8	91.4
	240.0	8.16	1813	1624	81.63	1.578	65.0	92.6
	240.0	7.20	1615	1652	74.75	1.470	67.9	93.5
	240.0	6.25	1414	1677	69.34	1.385	73.0	94.3
	240.0	5.30	1209	1701	60.24	1.220	75.3	95.0
	240.0	4.40	1005	1721	51.61	1.058	78.5	95.3
	240.0	3.32	760	1745	39.54	0.821	80.6	95.3
	240.0	2.35	531	1765	26.60	0.559	78.5	94.2
	240.0	1.44	306	1786	12.51	0.266	64.8	88.3
	240.0	1.00	126	1800	0.00	0.000	0.0	52.6

DRAWING NO. PAGE 5 of 8 REV.
 5JKW9BG -

Dayton Electric Mfg. Co. Lake Forest, IL 60045 USA

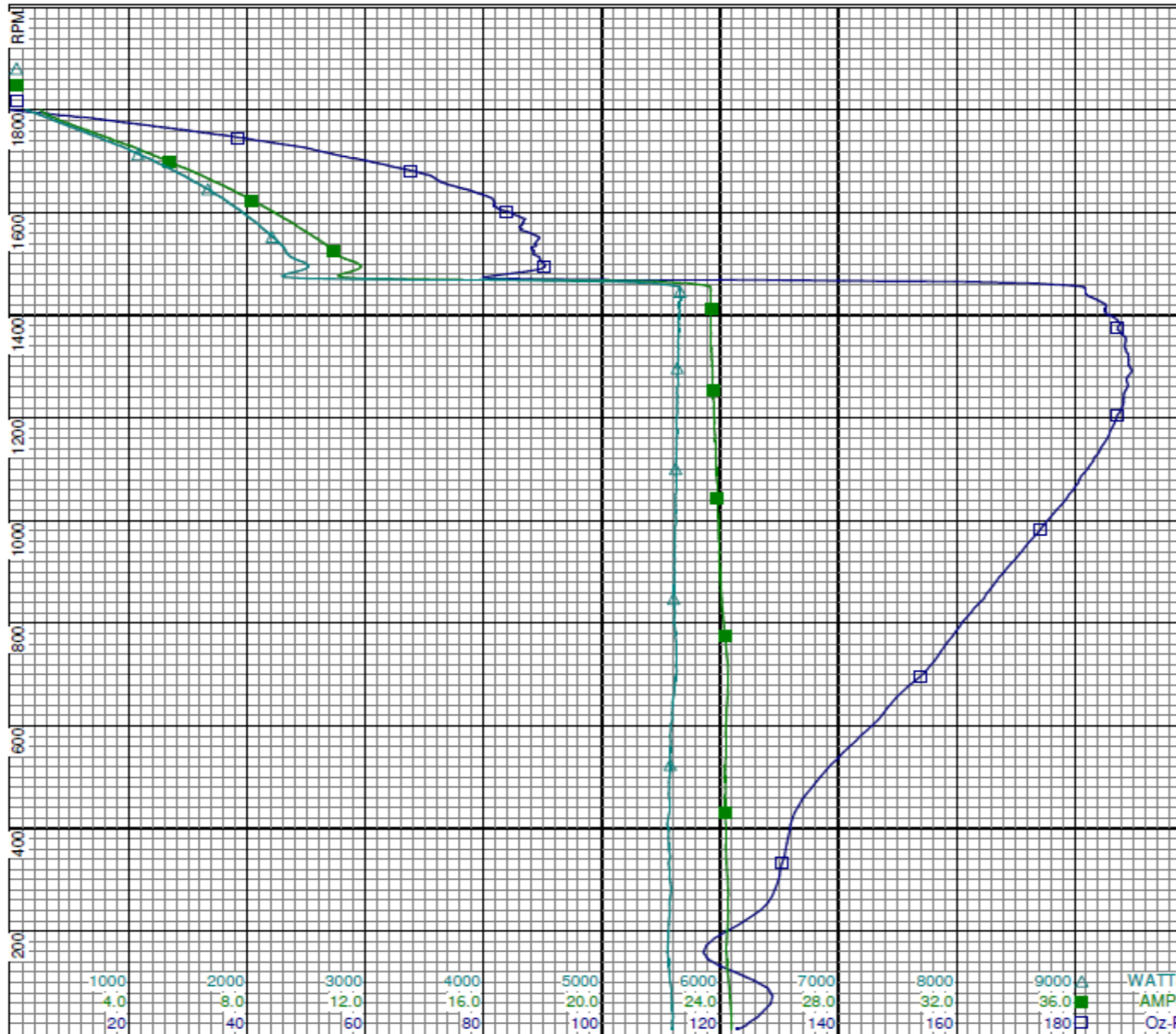
Performance Data



5JKW9BG

REV.

-



Curve Descriptions:

Motor(1) Test 10 Start 240V 60 Hz 4P
CCW 50ufd Run 491ufd Run

- SPEED vs TORQUE
- SPEED vs I Line
- △ SPEED vs WATTS

Motor Ratings:

(1) T063CXCPN233001 ID: 1
5JKW9BG

DRAWING NO.	PAGE 6 of 8	REV.
5JKW9BG		-

Dayton Electric Mfg. Co. Lake Forest, IL 60045 USA

Performance Data



5JKW9BG

REV.

-

Dayton Manufacturing Company

Motor Description

Model: T63CPN-2330 5JKW9BG
 Motor ID: 1
 Poles: 4
 Volts: 115/208-230
 Frequency: 60
 HP: 1/2
 Speed: 1725
 Phase: 1
 Protector: AUTO

Test Conditions

Test Type: Run
 Test Number: 11
 Poles: 4
 Volts: 230
 Hz: 60
 Rotation: CCW
 Special Cond:
 Speed Conn:
 TestBoard: Amtps Performance Fixture #1
 Run Cap: 50 MFD 370 VOLT
 Start Cap: 594 MFD 220 VOLT
 Environment: 21.4 Deg C 11 % RH 1013 hPa
 Tested: 12/15/2016 8:59:34 AM
 Tested By: Sharp, Gerald
 Gear Ratio: 1:1
 Bearing Friction: -0.24 Oz-Ft
 Windage Torque: -0.98 Oz-Ft

Special Points	Vline(V)	Iline(A)	Watts	RPM	Tq(Oz-ft)	HP	Eff(%)	PF(%)
	230.0	0.74	105	1794	0.00	0.000	0.0	62.2
	230.0	1.44	312	1776	13.80	0.292	69.7	94.0
24.3 OZ-FT	230.0	2.16	477	1763	24.30	0.510	79.7	96.1
0.5 HP	230.0	2.11	467	1764	23.81	0.500	79.9	95.9
	230.0	2.50	555	1757	28.83	0.603	81.1	96.6
34 OZ-FT	230.0	2.90	645	1749	34.00	0.708	81.9	96.7
	230.0	3.41	756	1738	39.68	0.821	81.0	96.5
1725 RPM	230.0	4.00	884	1725	46.01	0.945	79.7	96.1
	230.0	4.34	958	1718	49.50	1.012	78.8	95.9
	230.0	5.27	1158	1696	57.66	1.164	75.0	95.5
	230.0	6.20	1351	1673	65.99	1.314	72.6	94.7
	230.0	7.09	1530	1648	71.45	1.402	68.3	93.8
	230.0	7.98	1702	1623	76.58	1.480	64.9	92.8
	230.0	8.85	1861	1595	79.01	1.500	60.1	91.5
	230.0	9.71	2017	1564	82.74	1.541	57.0	90.3
	230.0	10.53	2155	1531	83.64	1.524	52.8	89.0
BDT OZ-FT	230.0	10.70	2186	1524	83.87	1.522	51.9	88.8
	230.0	11.35	2289	1495	83.05	1.478	48.2	87.7
	230.0	12.12	2407	1456	81.89	1.419	44.0	86.4
	230.0	12.87	2512	1412	79.56	1.338	39.7	84.9
	230.0	13.57	2606	1366	75.52	1.228	35.2	83.5
	230.0	14.23	2684	1316	71.72	1.124	31.2	82.0
	230.0	14.86	2751	1261	66.92	1.005	27.2	80.5
	230.0	15.43	2806	1202	61.36	0.878	23.4	79.0
	230.0	15.97	2853	1137	55.45	0.751	19.6	77.7
	230.0	16.45	2892	1069	49.24	0.627	16.2	76.4
	230.0	16.90	2917	994	42.68	0.505	12.9	75.1
	230.0	17.30	2936	913	35.66	0.388	9.8	73.8
	230.0	20.07	3896	832	79.43	0.786	15.1	84.4
	230.0	22.96	5115	753	140.18	1.257	18.3	96.8
	230.0	23.15	5147	650	135.96	1.052	15.2	96.7
	230.0	23.13	5121	540	128.11	0.824	12.0	96.3
	230.0	23.12	5113	426	120.89	0.613	8.9	96.2
	230.0	23.13	5108	304	118.86	0.431	6.3	96.0
	230.0	23.21	5120	174	111.02	0.231	3.4	95.9

DRAWING NO.	PAGE 7 of 8	REV.
5JKW9BG		-

Dayton Electric Mfg. Co. Lake Forest, IL 60045 USA

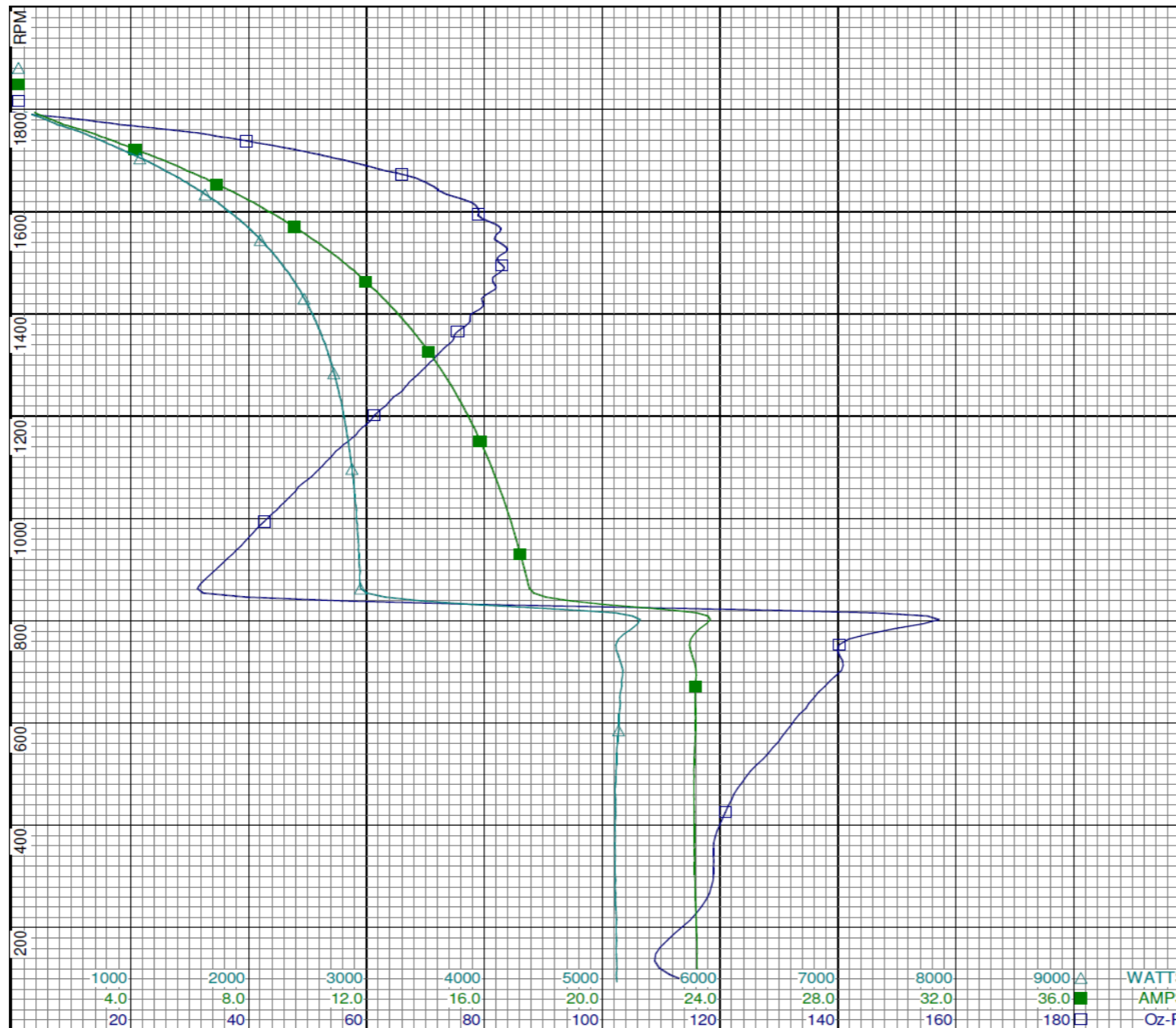
Performance Data



5JKW9BG

REV.

-



Curve Descriptions:

Motor(1) Test 11 Run 230V 60 Hz 4P
CCW 50ufd Run

- SPEED vs TORQUE
- SPEED vs ILine
- △ SPEED vs WATTS

Motor Ratings:

(1) T063CXGPN233001 ID: 1
5JKW9BG

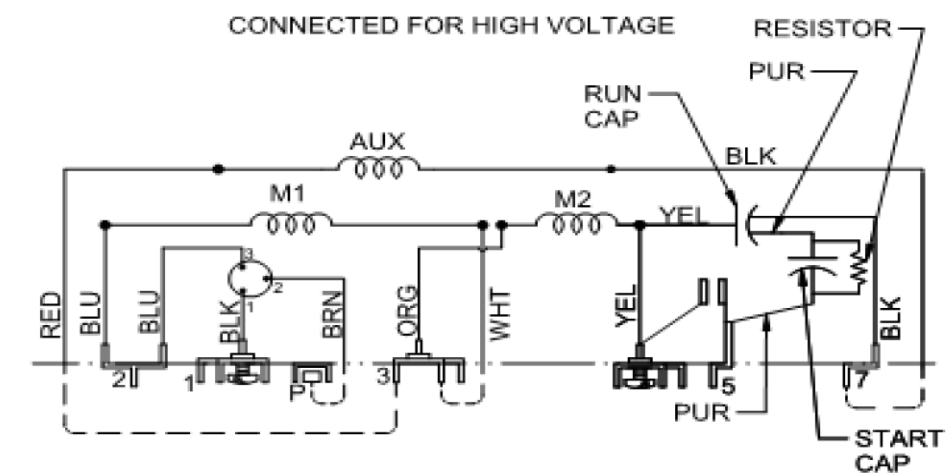
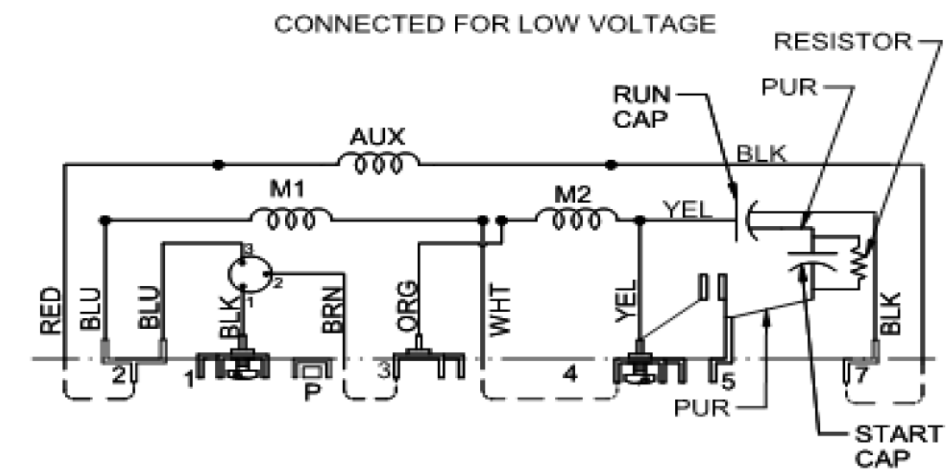
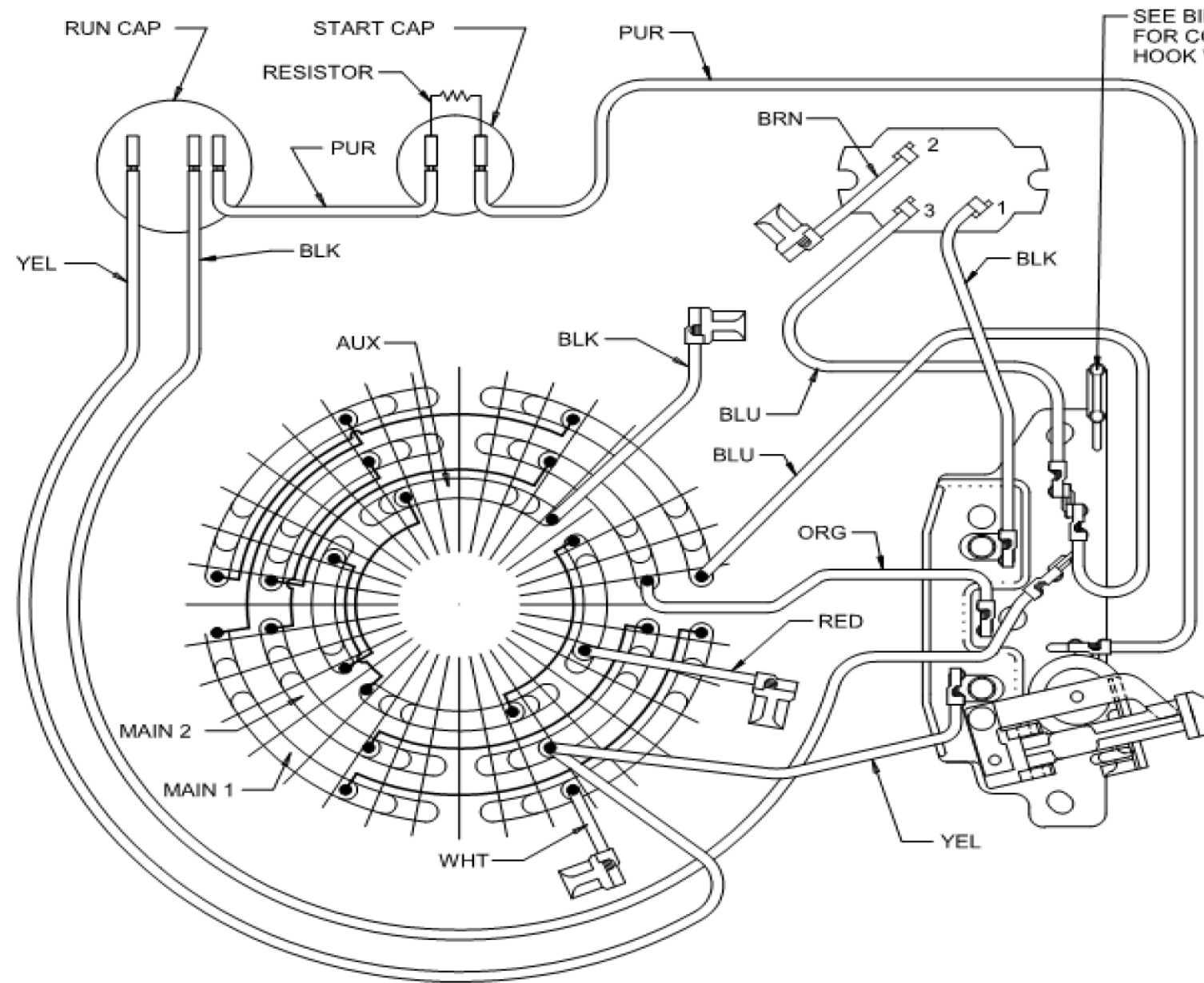
DRAWING NO.	PAGE 8 of 8	REV.
5JKW9BG		-

Dayton Electric Mfg. Co. Lake Forest, IL 60045 USA

Wiring Diagram



5JKW9BG REV. -



ROTATION: CCW SWITCH END REVERSIBLE TO REVERSE ROTATION INTERCHANGE BLACK AND RED LEADS
T 4P DUAL VOLT REVERSIBLE W/CAPS & PROT

DRAWING NO. PAGE 1 of 1 REV. -
5JKW9BG

Dayton Electric Mfg. Co. Lake Forest, IL 60045 USA

Dayton[®]**FARM DUTY MOTOR**

HP: 1/2

VOLTS: 115/208-230

AMPS: 4.6/2.6-2.4

RPM: 1725

DUTY: CONT

SF: 1.4

KVA CODE: M

ENCL: TEAO

THERMALLY PROTECTED: AUTO

MFG. NO. PROT. CODE: 00300

MTR REF: T63CXCPN-2330

PH: 1

HZ: 60

FR: 56

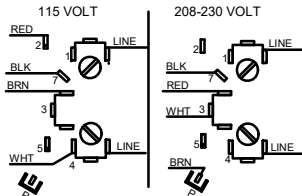
INS CL: B

AMB: 40 °C

SFA: 6.1/3.4-3.2

AVG. F.L.
EFF.Part
No 5JKW9BG**Disconnect Power Before Making
Any Electrical Connections or Changes**

CONNECTIONS

MOTOR IS CW ROTATION SHAFT END
TO REVERSE ROTATION INTERCHANGE
RED AND BLACK LEADS.

Mfd for Dayton Electric Mfg. Co., Lake Forest, IL 60045 USA

Made in Mexico