

SPECIFICATIONS & SUBMITTAL DATA

FEATURES:

- Heavy gauge galvanized steel cabinet
- Electrostatically applied Polyester resin powder paint finish
- Drawn pans on 75/85DD & 95DD units
- Sealed pans on 10/12DD & 14/21DD units
- Chem treated adjustable water troughs in pad frames
- Greater air flow
- Made in the U.S.A.



MODELS

10/12 DD
14/21 DD

Project

Location

Architect

Engineer

Contractor

Submitted By _____ Date _____

MODELS

75/85 DD
95 DD



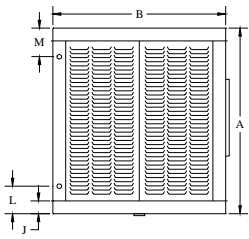
Ref. No.	Cooler Model No.	Qty.	CFM	Static Pressure	Motor	HP	Speed	Volts	Phase	Sheave	Pump	Qty.	Volts
1													
2													
3													
4													
5													
6													
7													
8													
9													

Notes

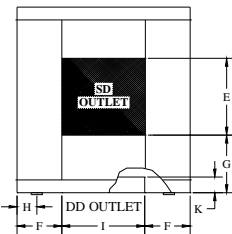
CHAMPION COOLER /
ESSICK AIR PRODUCTS
5800 Murray, Little Rock, AR 72209
1-800-643-8341
info@essickair.com

10/12 & 14/21 UNITS

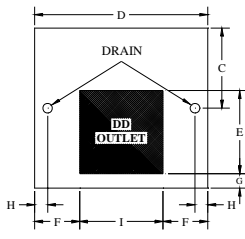
75/85 & 95 UNITS



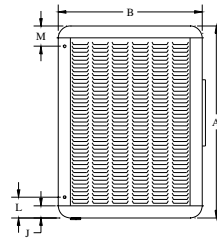
SIDE VIEW



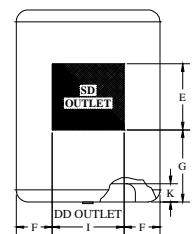
FRONT VIEW



BOTTOM VIEW



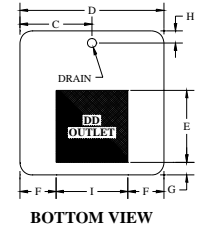
SIDE VIEW



FRONT VIEW

DIMENSIONAL DATA*													
MODEL NO.	CABINET			ELECT.	DUCT				DRAIN LOCATION	WATER SERVICE	L	J	K
	A	B	D		OPENING	LOCATION							
75/85 DD & 95 DD	53 5/8	41-1/4	41-1/4	4-1/2	21-3/4	21-3/4	4-7/8	9-3/4	5-3/4	20-5/8	5-7/8	4	4-3/8
10/12 DD	53 5/8	50	50	7-9/16	26-7/8	26-7/8	4	11-9/16	4	25	7-9/16	4	4-9/16
14/21 DD	61 1/4	62	62	7-9/16	31-3/4	31-3/4	7	15-1/8	4	31	7-9/16	4	4-9/16

* All Measurements in inches.



BOTTOM VIEW

DOWN DISCHARGE			PERFORMANCE <i>Certified Air Delivery At .1" Increments Of External Static Pressure (Inches Static Pressure Water Gauge)</i>																							
MODEL NO.	B.H.P.	OPER. WGT.	0"		0.1"		0.2"		0.3"		0.4"		0.5"		0.6"		0.7"		0.8"		0.9"		1.0"			
			CFM	RPM	CFM	RPM	CFM	RPM	CFM	RPM	CFM	RPM	CFM	RPM	CFM	RPM	CFM	RPM	CFM	RPM	CFM	RPM	CFM	RPM		
75/85 DD	3/4	397	6074	300	5806	314	5479	330	5144	348	4812	364	4482	381	4132	399	3753	419	3342	444						
	1	403	6685	330	6449	342	6160	357	5854	373	5552	388	5255	403	4951	418	4638	434	4299	452	3935	473				
95 DD	1 1/2	413	7653	378	7453	388	7212	400	6949	414	6683	428	6417	441	6158	454	5893	467	5629	481	5357	495	5068	510		
	2	417	8424	416	8247	425	8035	436	7802	448	7560	460	7320	473	7078	485	6840	497	6602	509	6363	521	6122	533		
	3	456	9642	477	9493	484	9315	493	9121	503	8918	513	8706	524	8493	535	8283	546	8071	556	7864	567	7657	577		
10/12 DD	1	652	9225	246	8673	258	8215	274	7607	286	7098	300	6581	314	6038	330										
	1 1/2	662	10575	282	10004	293	9680	306	9213	318	8822	329	8315	342	7906	354	7372	366	6847	380						
	2	666	11625	310	11193	320	10793	331	10360	342	9986	354	9551	364	9186	376	8755	386	8386	398	7904	409	7434	423		
14/21 DD	1 1/2	936	13245	214	12690	224	11955	236	11121	248	10415	260	9789	272	9032	285	8016	300								
	2	940	14607	236	14106	245	13520	255	12692	266	12093	278	11388	288	10728	298	10042	310	9337	323	8694	339				
	3	979	16711	270	16299	278	15726	285	15138	295	14557	306	13897	315	13379	325	12821	334	12246	343	11583	353	11002	363		
	4	983	19806	320	19481	327	19043	333	18606	340	18088	348	17544	357	16983	365	16558	374	16079	382	15528	389	15110	397		
	5																									

Performance shown is for installation type B - Free inlet, Ducted outlet. Power rating (BHP) does not include drive losses.

SHEAVE SELECTION						
H.P.	BORE	75/85 DD	95 DD	10/12 DD	14/21 DD	
3/4	1/2	110279-002 (Static < 0.7)	-	-	-	
3/4	1/2	110279-004 (Static > 0.3)	-	-	-	
3/4	5/8	110308 (Static < 0.7)	-	-	-	
3/4	5/8	110279-003 (Static > 0.3)	-	-	-	
1	5/8	110279-003 (Static < 0.8)	-	110308	-	
1	5/8	110306-1 (Static > 0.6)	-	-	-	
1	7/8	110302 (Static < 0.8)	-	110309	-	
1	7/8	110299 (Static > 0.6)	-	-	-	
1 1/2	5/8	-	110279-003 (Static < 0.7)	110279-003 (Static < 0.6)	110286	
1 1/2	5/8	-	110306-1 (Static > 0.4)	110306-1 (Static > 0.4)	-	
1 1/2	7/8	-	110302 (Static < 0.7)	110302 (Static < 0.6)	110290	
1 1/2	7/8	-	110299 (Static > 0.4)	110299 (Static > 0.4)	-	
2	5/8	-	110306-1	110306-1	110286 (Static > 0.6)	
2	5/8	-	-	-	110285 (Static < 0.4)	
2	7/8	-	110299	110299	110290 (Static > 0.6)	
2	7/8	-	-	-	110289 (Static < 0.4)	
3	1 1/8	-	110304 (Static > 0.6)	-	110291	
3	1 1/8	-	110300 (Static < 0.2)	-	-	
5	1 1/8	-	-	-	110291 (Static < 0.6)	
5	1 1/8	-	-	-	110304-1 (Static > 0.4)	

MOTOR SPECIFICATIONS															
BLOWER MOTORS		VOLTS	PHASE	MOTOR AMPS*	SHAFT DIA.	MOTOR WGT(LB)	MOTOR PART NO.	BLOWER MOTORS		VOLTS	PHASE	MOTOR AMPS*	SHAFT DIA.	MOTOR WGT(LB)	MOTOR PART NO.
H.P.	SPEED							H.P.	SPEED						
3/4	1	115/208-230	1	13.8/7.6-6.9	5/8	24	110455	2	1	208-230/460	3	7.5-6.8/3.4	7/8	44	110464-9
3/4	2	230	1	6.9	1/2	21	110480	3	1	208-230/460	3	10.6-9.6/4.8	1 1/8	83	110465-9
3/4	1	208-230/460	3	3.5-3.2/1.6	5/8	20	110461	5	1	230/460	3	15.2/7.6	1 1/8	87	110466-9
1	1	115/230	1	16/8	5/8	28	110457								
1	2	230	1	8	5/8	29	110458								
1	1	208-230/460	3	4.6-4.2/2.1	7/8	34	110462-9								
1 1/2	1	115/208-230	1	20/11-10	5/8	41	110459-1								
1 1/2	1	208-230/460	3	6.6-6/3	7/8	40	110463-9								
2	1	115/208-230	1	24/13.2-12	5/8	50	110460-1								

* Amperage shown is from National Electrical Code. Use amperage shown on motor nameplate to determine motor protector.

PUMP PART NO.	VOLTS	AMPS	WATTS	GPM (SFT. HEAD)
† 110467-1	115	1.2	73	3.8
† 110468-1	230	.8	77	3.8
‡ 110467	115	1.0	73	4.6
‡ 110468	230	0.58	77	4.6

† Pump for 75/85 & 95 units
‡ Pump for 10/12 & 14/21 units