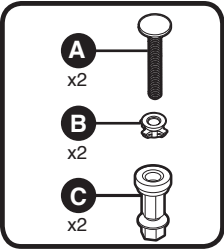


Tools Needed

Herramientas requeridas

Outils requis



Hardware Kit Includes

El kit de instalación incluye

Le kit de matériel inclut



888.722.6488

corp@BemisMfg.com

ToiletSeats.com

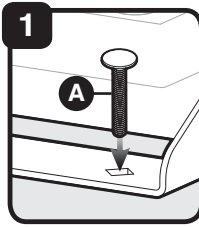


Do not stand on cover

No se pare en la tapa

Ne pas se mettre debout sur le siège

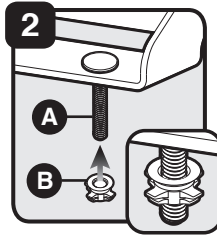
! IMPORTANT Installation Instructions
IMPORANTE Instrucciones de Instalación
IMPORTANT Instructions d'installation



1
Insert (A) into metal plate.

Inserte (A) en la placa de metal.

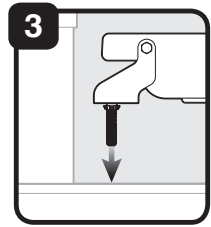
Insérer (A) dans la plaque métallique.



2
Twist or slide (B) onto (A) until seated under metal plate.

Gire o deslice (B) sobre (A) hasta que se asiente debajo de la placa de metal.

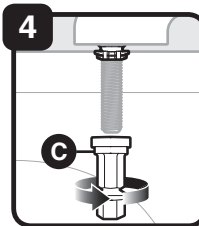
Torsader ou glisser (B) sur (A) jusqu'à ce qu'il soit placé sous la plaque métallique.



3
Place riser on bowl.

Coloque el tubo vertical en la taza.

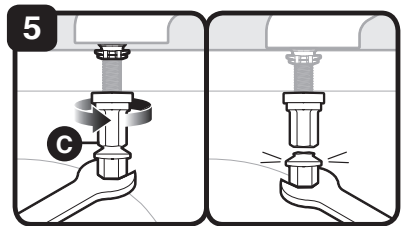
Placer sur l'élevateur sur la cuvette.



4
Finger tighten (C) to the under side of the bowl.

Aprieta con los dedos (C) en el lado inferior de la taza.

Serrer à la main (C) au-dessous de la cuvette.



5
Tighten (C) until lower portions snap off.

Apretar (C) hasta que las partes inferiores se desprendan.

Serrer (C) jusqu'à ce que les portions inférieures cassent.