

Genuine Miller® Accessories



**Deltaweld
350/500
Running Gear
301523**

Features small footprint, dual-cylinder rack, chains for gas cylinders, ergonomic handle design and lockable front casters with two torch holders, and storage area below.

ergonomic handle design and lockable front casters with two torch holders, and storage area below.



Cart Accessory Kit 301528

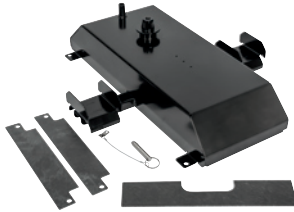
Single-wire feeder kit for use with running gear 301523. See note below for dual-wire feeder kit. Consists of flowmeter regulator with 5-foot (1.5 m) gas hose, 10-foot (3 m) 4/0 feeder weld cable with lugs, 15-foot (4.6 m) work cable with 600-amp C-clamp, and 9-foot (2.7 m) ArcConnect control/motor cable. Dual kit comes with an additional flowmeter regulator and gas hose.

Note: For dual-wire feeder kit both 301528 and 301579 are required.



Stationary Handle Kit 301529

Allows easy movement and portability of the power source.



Feeder Swivel Kit 301533

For single- and dual-wire feeders. Allows feeder to mount to the top of Deltaweld. Only single-wire feeder can swivel.



Hanging Bail 058435

Used for suspending feeder over work area.



ArcConnect Control/Motor Cables

280471009 9 ft. (2.7 m)

280471015 15 ft. (4.6 m)

280471025 25 ft. (7.6 m)

280471050 50 ft. (15.2 m)

280471075 75 ft. (22.9 m)

280471100 100 ft. (30.5 m)

Connects power source directly to feeder or remote operator interface.

Note: Cables cannot be joined together to create longer lengths and extension cables are not available.



**Work Sense Leads
(volt sense)**

300461 25 ft. (7.6 m)





300462 50 ft. (15.2 m)

When connected from the back of the wire feeder to the workpiece, the work

sense lead provides accurate voltage feedback on the wire feeder display, and compensates for any voltage drop from the weld cables.

Drive Roll Kits and Guides

Select drive roll kits from chart below according to type and wire size being used. Drive roll kits include four drive rolls, necessary guides and feature an anti-wear sleeve for inlet guide.

Wire Size	"V" groove for hard wire 	"U" groove for soft wire or soft-shelled cored wires 	"V" knurled for hard-shelled cored wires 	"U" clogged for extremely soft wire or soft-shelled cored wires (i.e., hard facing types) 
.023/.025 in. (0.6 mm)	087132	—	—	—
.030 in. (0.8 mm)	046780	—	—	—
.035 in. (0.9 mm)	046781	044750	046792	—
.035 and .045 in. (0.9 and 1.2 mm)	227061*	—	—	—
.040 in. (1.0 mm)	191917	—	—	—
.045 in. (1.1/1.2 mm)	046782	046785	046793	083319
.052 in. (1.3/1.4 mm)	046783	046786	046794	—
1/16 in. (1.6 mm)	046784	046787	046795	046800
.068/.072 in. (1.8 mm)	—	—	—	—
5/64 in. (2.0 mm)	—	046788	046796	046801

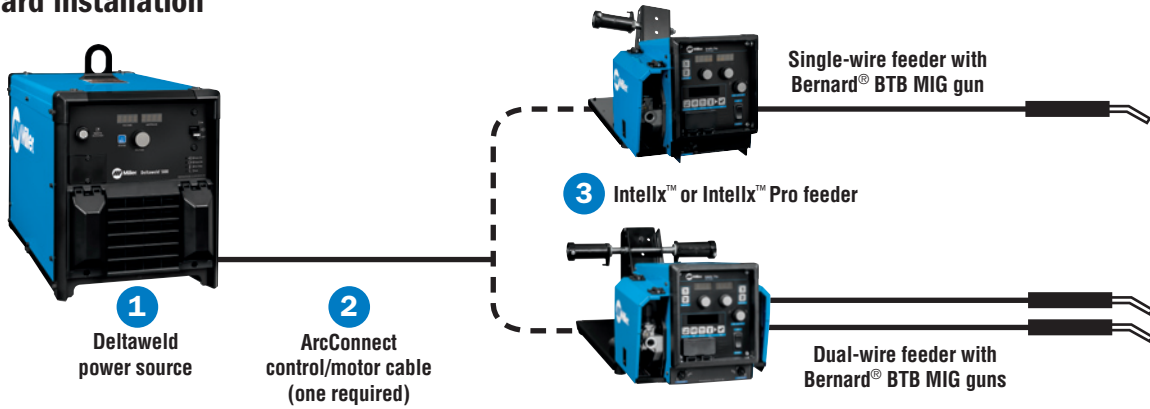
*Included with Intelx feeders. Drive roll is dual-size reversible with one .035-inch and one .045-inch groove.

Wire Guides

Wire Size	Inlet Guide	Intermediate Guide
.023-.040 in. (0.6-1.0 mm)	221030	056206
.045-.052 in. (1.2-1.3 mm)	221030	056207
1/16-5/64 in. (1.6-2.0 mm)	221030	056209
5/64-1/8 in. (2.0-3.2 mm)	229919	056211

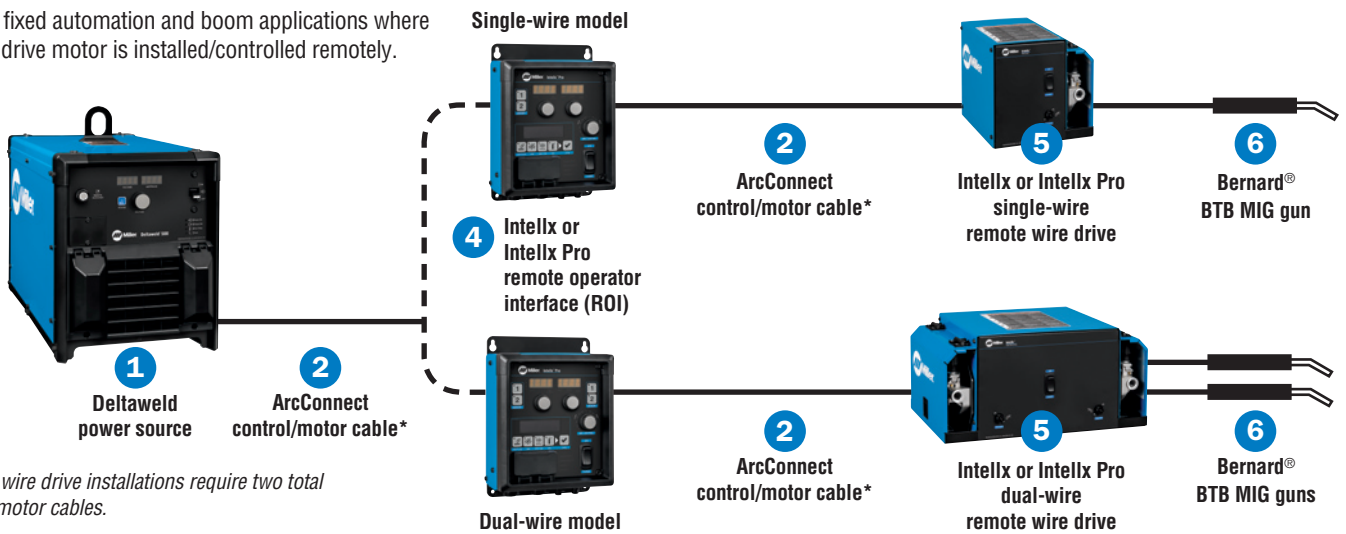
Typical Deltaweld® Systems Installations

Standard installation



Remote wire drive installation

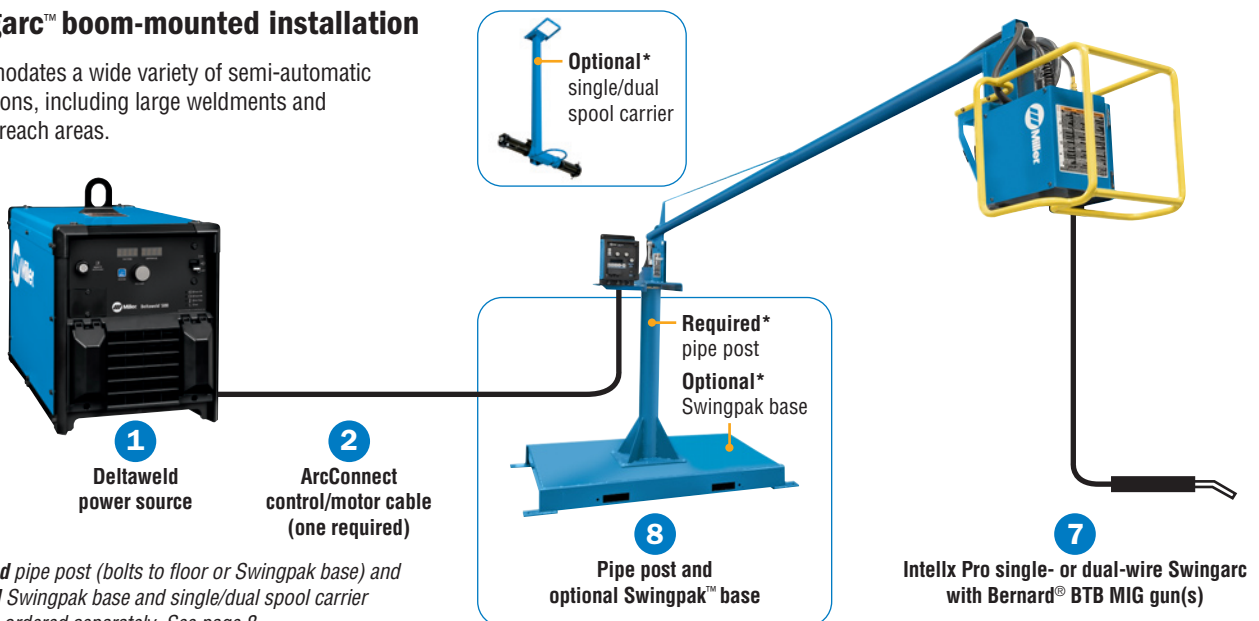
Ideal for fixed automation and boom applications where the wire drive motor is installed/controlled remotely.



*Remote wire drive installations require two total control/motor cables.

Swingarc™ boom-mounted installation

Accommodates a wide variety of semi-automatic applications, including large weldments and hard-to-reach areas.



*Required pipe post (bolts to floor or Swingpak base) and optional Swingpak base and single/dual spool carrier must be ordered separately. See page 8.

Ordering Information Most popular models ◀

	Deltaweld® MIGRunner™ System	Stock No.	Description	Qty.	Price
350 MIGRunner	With Single-Wire Intellix™	951792	Includes Deltaweld 350 power source (907747), single- or dual-wire bench feeder with Bernard® BTB Gun 300 A (two with dual-wire feeders) and .035/.045 in. V-grooved drive rolls, factory-installed running gear with cable holder, gun holders, and chains for gas cylinders, cart accessory kit for single- or dual-wire feeder (see page 6), and quick-setup guide and video		
	With Single-Wire Intellix Pro	951777 ◀			
	With Dual-Wire Intellix	951817			
	With Dual-Wire Intellix Pro	951818			
500 MIGRunner	With Single-Wire Intellix	951814	Includes Deltaweld 500 power source (907785), single- or dual-wire bench feeder with Bernard® BTB Gun 400 A (two with dual-wire feeders) and .035/.045 in. V-grooved drive rolls, factory-installed running gear with cable holder, gun holders, and chains for gas cylinders, cart accessory kit for single- or dual-wire feeder (see page 6), and quick-setup guide and video		
	With Single-Wire Intellix Pro	951808 ◀			
	With Dual-Wire Intellix	951819			
	With Dual-Wire Intellix Pro	951820			
	With Single-Wire Intellix Pro	951824	Same as above, but with Deltaweld 500 (575 V) power source (907786)		

Configure a Custom Deltaweld System (See corresponding item numbers in Typical Deltaweld Systems Installations on page 7.)

Power Source

1	Deltaweld® 350	907747 ◀ 907747001	208/230/460 V power source with ArcConnect 208/230/460 V power source with ArcConnect, meters and 14-pin receptacle		
	Deltaweld® 500	907785 ◀ 907785001 907786 907786001	208/230/460 V power source with ArcConnect and meters 208/230/460 V power source with ArcConnect, meters and 14-pin receptacle 575 V power source with ArcConnect and meters 575 V power source with ArcConnect, meters and 14-pin receptacle		

Cables and Leads

2	ArcConnect Control/Motor Cables		See page 6 for available lengths		
	Work Sense Leads (volt sense)		See page 6 for available lengths		

Feeder, ROI and Swingarc

3	Intellix Bench-Style Wire Feeders	951783 951815	Single-wire feeder with Bernard BTB Gun 300 A and .035/.045 in. V-groove drive rolls Dual-wire feeder with two Bernard BTB Gun 300 A and .035/.045 in. V-groove drive rolls		
	Intellix Pro Bench-Style Wire Feeders	951784 ◀ 951816	Single-wire feeder with Bernard BTB Gun 300 A and .035/.045 in. V-groove drive rolls Dual-wire feeder with two Bernard BTB Gun 300 A and .035/.045 in. V-groove drive rolls		
4	Intellix Remote Operator Interface (ROI)	301548 301551	Control box for single-wire drive assembly Control box for dual-wire drive assembly		
	Intellix Pro Remote Operator Interface (ROI)	301552 301553	Control box for single-wire drive assembly Control box for dual-wire drive assembly		
5	Intellix Remote Wire Drive	301554 301555	Single-wire drive assembly Dual-wire drive assembly		
	Bernard BTB Gun	Q3015AE8XMC Q4015AE8EMC	300 A, 15 ft. (4.6 m) with Centerfire™ consumables 400 A, 15 ft. (4.6 m) with Centerfire™ consumables		
7	Intellix Pro Swingarc™ Boom-Mounted Wire Feeders	951804	12 ft. single-wire model with Bernard BTB Gun 400 A and .035/.045 in. V-groove drive rolls		
		951806	16 ft. single-wire model with Bernard BTB Gun 400 A and .035/.045 in. V-groove drive rolls		
		951805	12 ft. dual-wire model with two Bernard BTB Gun 400 A and .035/.045 in. V-groove drive rolls		
8	Pipe Post	149838 149839	4 ft. pipe post. Required for mounting Swingarc booms 6 ft. pipe post. Required for mounting Swingarc booms		
	Swingpak™ Base	183997	Optional mounting platform for pipe post		
Single/Dual Spool Carrier		300353 300352	Optional spool carrier for 4 ft. pipe post Optional spool carrier for 6 ft. pipe post		
	Boom Retrofit Kits	301470 301471	Single boom. Retrofits Deltaweld onto 70 Series Swingarc™ Dual boom. Retrofits Deltaweld onto 70 Series Swingarc™		

Accessories

See page 6

Date:

Total Quoted Price:

Distributed by:

