



SERVICE PARTS

BULLETIN NO.
54-04-2000

SPECIFY CATALOG NO. AND SERIAL NO. WHEN ORDERING PARTS			REVISED BULLETIN	DATE
USB PORTABLE POWER SOURCE AND CHARGER				Apr. 2019
CATALOG NO.	48-59-2012	SERIAL NUMBER	K67A	
WIRING INSTRUCTION				

EXAMPLE:

00	0
----	---

Component Parts (Small #)
Are Included When Ordering
The Assembly (Large #).

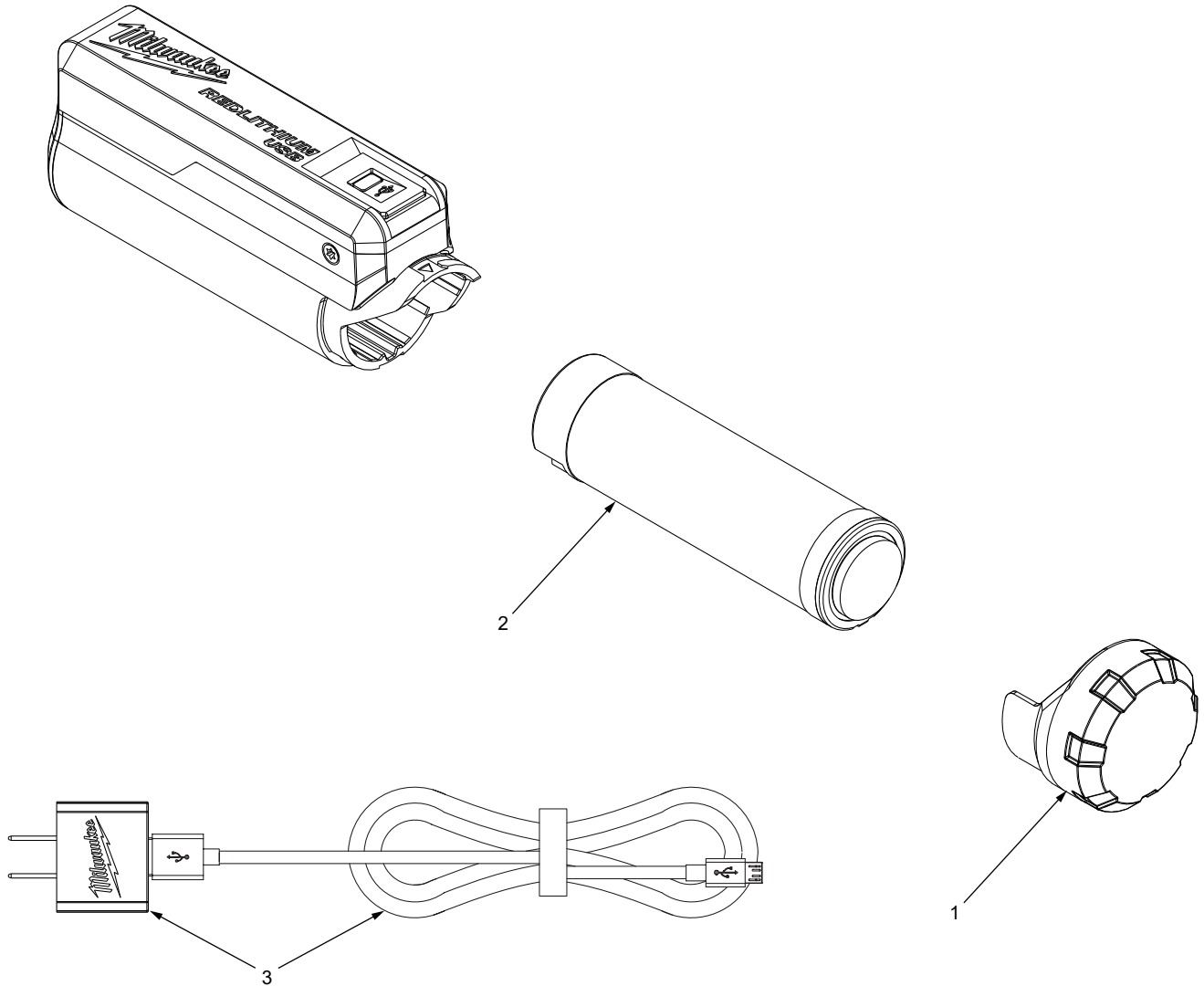


FIG.	PART NO.	DESCRIPTION OF PART	NO. REQ.
1	31-12-0640	Charger Cap	(1)
2	48-11-2130	REDLITHIUM® USB Battery (Optional)	(1)
3	44-66-1215	Wall Plug and 2 ft. USB Cable (Optional)	(1)
4	12-20-2013	Service Nameplate (Not Shown)	(1)

FIG. NOTES

- 4 A clean, dry surface is essential for proper performance for any adhesive system. The area intended for application of any adhesive label or nameplate must be prepared by cleaning with isopropyl alcohol. The solvent is to be applied with a clean, lint free applicator and the surface allowed to dry before applying the label or nameplate.