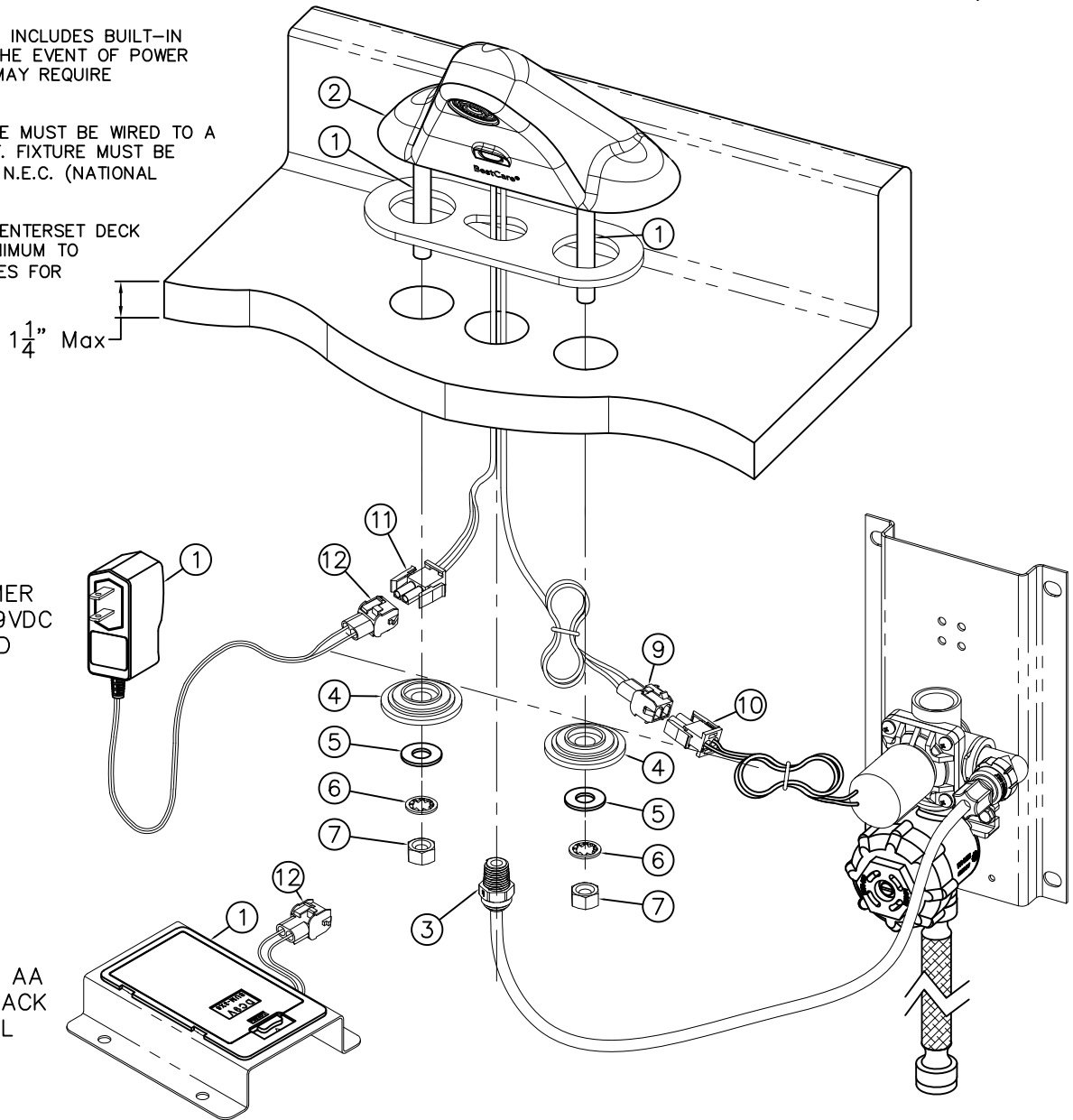




NOTE:

- 1- PLUG-IN TRANSFORMER INCLUDES BUILT-IN SECONDARY FUSE. IN THE EVENT OF POWER SURGE TRANSFORMER MAY REQUIRE REPLACEMENT.
- 2- ELECTRICAL RECEPTACLE MUST BE WIRED TO A GFI PROTECTED CIRCUIT. FIXTURE MUST BE EARTH GROUNDED PER N.E.C. (NATIONAL ELECTRICAL CODE).
- 3- PROVIDE 3-HOLE, 4" CENTERSET DECK OPENINGS WITH Ø1" MINIMUM TO Ø1-1/2" MAXIMUM HOLES FOR FAUCET INSTALLATION.



TRANSFORMER
120VAC TO 9VDC
STANDARD

(6) x 1.5V AA
BATTERY PACK
OPTIONAL

INSTALLATION INSTRUCTIONS:

- A- INSTALL THE THREADED ROD (1) FROM THE HARDWARE PACKAGE TO THE FAUCET ASSEMBLY (2).
- B- APPLY TEFLON TAPE TO THE 1/4" NPT FITTING (3) THEN INSTALL INTO THE FAUCET ASSEMBLY.
- C- FEED THE FAUCET ASSEMBLY WIRES THROUGH THE CENTER HOLE AND MOUNT FAUCET ASSEMBLY (2) AND GASKET ON THE BASIN AND FASTEN USING THE PROVIDED STEP WASHER (4), FLAT WASHER (5), LOCK WASHER (6) AND HEX NUT (7).
- D- CONNECT THE 1/4" POLYETHYLENE WATER LINE TO THE VALVE ASSEMBLY; HAND TIGHTEN FERRULE NUT.
- E- CONNECT THE WHITE ELECTRICAL CONNECTORS (9) AND (10) TOGETHER. CONNECT THE RED ELECTRICAL CONNECTORS (11) AND (12) TOGETHER.
- F- AFTER THOROUGHLY FLUSHING SUPPLY LINES, MAKE UP CONNECTIONS TO VALVE ASSEMBLY (USE FLEXIBLE INLET HOSE) CONNECT TO 1/2" NPT SUPPLY.



WHITEHALL MANUFACTURING
P.O. BOX 3527 Industry, CA 91744
15125 Proctor Ave Industry, CA 91746
(626) 968-6681 FAX (626) 855-4862

TITLE LIGATURE RESISTANT FAUCET *WH3375-SO/-BATT		
MANUFACTURE DATE	DATE ISSUED	DRAWING NUMBER
MAY 2016	05/06/16	9918-071-001
TO PRESENT	DATE REVISED 05/30/18	