

### FEATURES

- Long-life 60,000 hour LEDs at L80 for reduced maintenance
- Four LED color choices and 80+ CRI
- Four Lumen packages
- Superior color consistency within a 3-step MacAdam ellipse and greater than 80 CRI
- Available in 2', 4', or 8' lengths
- Heavy die-formed steel channel
- LED boards and driver accessible for future maintenance or upgrades
- Surface Mount or Suspended
- QR code traceability
- DesignLights Consortium® (DLC) qualified; see [www.designlights.org](http://www.designlights.org)
- Five year warranty (Terms and Conditions apply)
- Maximum temperature 35°C on all lumen packages up to HL



### ORDERING INFORMATION

MODEL	SIZE	COLOR TEMP	LUMEN OUTPUT	DRIVER	VOLTAGE	OPTIONS
LCS LED Striplight	2 2' 4 4' 8 8'	30 3000K 35 3500K 40 4000K 50 5000K	LW Low Watt ML Medium Lumen HL High Lumen VL Very High Lumen	E Fixed Output ESD Step Dimming ED 0-10V Dimming	U 120V-277V 347 347 (E,ED,ED1 only)	ELL14 Emergency Battery Pack, 1400 Lumens <sup>1,2,3</sup> GLR Fast Blow Fuse PAF Paint After Fabrication NYC NYC Compliant

See Product Availability Table below.

### ACCESSORIES (ORDER SEPARATELY)

- CSWG4 4' Wire Guard
- S18 18" Stem, Canopy
- SS18 18" Swivel Stem—45° Swivel
- CSHC Chain Hanger Assembly

<sup>1</sup> Not available in 2' size.

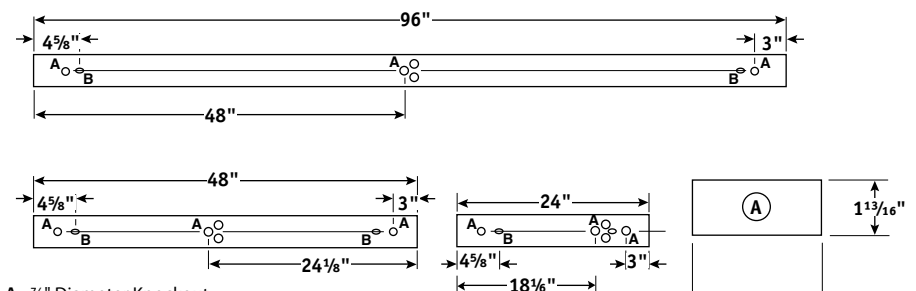
<sup>2</sup> For compatibility with Dual-Lite LiteGear® inverters in lieu of installed Battery Pack, contact Hubbell Lighting Representative.

<sup>3</sup> Not available in VL package.

### PRODUCT AVAILABILITY

SIZE	LUMEN PACKAGE	NOMINAL LUMENS (4000K)	NOMINAL WATTS	EFFICACY
2'	ML	3,000	26	116
4'	LW	2,800	23	122
	ML	5,600	48	117
	HL	6,800	55	124
8'	VL	11,200	105	107
	LW	5,600	48	118
	ML	11,200	105	107
	HL	13,600	110	123
	VL	22,400	210	107

Lumens vary according to color temperatures and other factors. See specific photometric test(s).



A - 7/8" Diameter Knockout  
B - 5/16" x 1/2" hole

Note 1: All Non-Shielded (strip) fixtures- Deduct 1/16" from overall dimension for continuous row mounting. Dimensions shown include end panel.