

**LED**



### FEATURES

- Long life 50,000 hour LEDs at L80 for reduced maintenance
- Four LED color choices
- Four lumen packages per size
- Superior color consistency within a 3-step MacAdam ellipse and greater than 80 CRI
- Available in 2', 4' or 8' lengths
- Optional integral emergency battery pack
- Heavy die-formed steel channel with 100% acrylic formed diffuser
- Fully assembled fixture for quick installation
- LED boards and driver accessible for future maintenance or upgrades
- Modular replaceable LED components
- Surface mount, wall mount or suspended
- Five year warranty (Terms and Conditions apply)
- Maximum temperature 35°C on all lumen packages up to HL

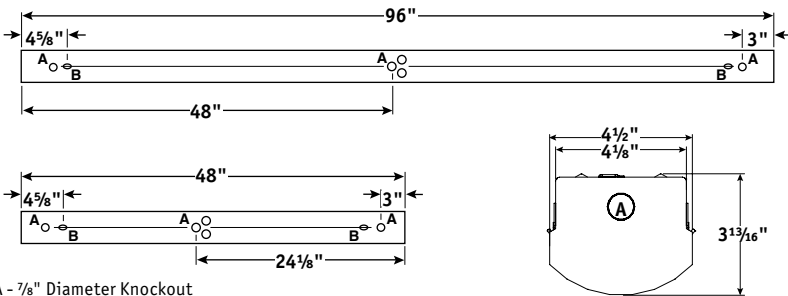
### ORDERING INFORMATION

<b>LCL</b>		-			-		-		-	
MODEL	SIZE	COLOR TEMP	LUMEN OUTPUT	DRIVER	VOLTAGE	OPTIONS				
LCL LED Open Striplight	4 4' 8 8'	30 3000K 35 3500K 40 4000K 50 5000K	LW Low Watt ML Medium Lumen HL High Lumen VL Very High Lumen <i>See Product Availability Table below.</i>	E Fixed Output ESD Step Dimming ED 0-10V Dimming	U 120V-277V 347 (E,ED,ED1 only)	<b>ELL14</b> Emergency Battery Pack, 1400 Lumens <sup>1,2,3</sup> <b>GLR</b> Fast Blow Fuse <b>PAF</b> Paint After Fabrication <b>NYC</b> NYC Compliant				

### ACCESSORIES (ORDER SEPARATELY)

- S18** 18" Stem, Canopy
- SS18** 18" Swivel Stem—45° Swivel
- CSHC** Chain Hanger Assembly

<sup>1</sup> For compatibility with Dual-Lite LiteGear® inverters in lieu of installed Battery Pack, contact Hubbell Lighting Representative.  
<sup>2</sup> Not available in 2 ft size.  
<sup>3</sup> Not available in VL package.



A - 7/8" Diameter Knockout  
 B - 5/16" x 1/2" hole  
 Note 1: All Non-Shielded (strip) fixtures—deduct 1/16" from overall dimension for continuous row mounting.  
 Dimensions shown include end panel.

### PRODUCT AVAILABILITY

SIZE	LUMEN PACKAGE	NOMINAL LUMENS (3500K)	NOMINAL WATTS	EFFICACY
2'	ML	2,500	25	100
4'	LW	2,500	25	100
	ML	5,000	48	104
8'	HL	6,100	55	110
	VL	10,100	96	105
	LW	5,000	48	104
	ML	10,100	96	105
	HL	12,200	111	110
	VL	20,100	193	104

Lumens vary according to color temperatures and other factors. See specific photometric test(s).