

AVAILABLE THROUGH

**GRAINGER**<sup>®</sup>

FOR THE ONES WHO GET IT DONE

GRAINGER.COM<sup>®</sup> | 1.800.GRAINGER



# Industrial Labeling Application Guide

2021-2022

EpsonLabelWorks



# Building Management/Safety

## Industrial Labeling Solutions for:

- COVID-19 Safety Notices
- HVAC Controls
- Security Instructions
- Elevator Instructions
- Exits
- Fire Extinguisher Operation
- Floor Building Directories
- Emergency Evacuation Signs
- Boiler Room Equipment
- Fuse Boxes, Circuit Breakers
- Directional Signs
- Mailboxes
- Public Address System Control
- Out-of-Service Signs
- Recycle Bins
- First Aid Instruction
- Cleaning Instructions
- Door Labels/Window Lettering
- OSHA/ANSI Safety Signs
- Wayfinding/Directional Signs
- Asset ID/Asset Management





# Construction

## Industrial Labeling Solutions for:

- Tool ID
- Equipment ID
- Gang Boxes
- Mobile Office
- Hard Hats & PPE
- Emergency Phone Systems
- Safety Procedure
- Hazard Warnings
- Supply Locations
- Repair Procedures
- Vehicle Lettering
- Vehicle Labels
- Material Delivery Signs
- Instrument Labeling
- Field Equipment





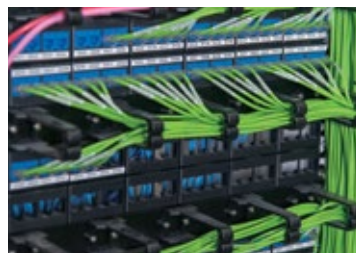


# IT/Datacom

## Industrial Labeling

### Solutions for:

- Cable/Wire ID
- Self-Lam/Wire Wrap
- Patch Panels
- Faceplate
- Panel
- Tool/Equipment ID
- Wire Flags
- Wire Routing
- Data Closet Install
- Network Install







# Education

## Industrial Labeling Solutions for:

- Band Instruments
- Dorm Room Signage
- Lab Equipment
- Athletic Equipment
- Activity Schedules
- Teacher/Student Desks
- Room Numbers
- Gym Lockers
- Library Shelves
- Library Books
- Bumper Stickers
- Band Uniforms
- Athletic Uniforms
- Staff/Student Mailboxes
- Literature Cubbies
- Curriculum Cubbies
- Inboxes/Outboxes
- Student Storage Areas
- Elementary Classrooms
- Visual Prompts
- Vending Machines
- Name Tags
- Lunch Room/Kitchen
- Teacher's Lounge
- Science Lab
- Gym Storage
- Tech Ed
- COVID-19 Signage





# Electrical

## Industrial Labeling Solutions for:

- Wire/Cable ID
- Interior/Exterior Electrical Panels
- Terminal Blocks
- Rating Plates
- Self-Laminating Wire Wraps
- Tool ID
- Equipment ID
- Heat Shrink Tubing



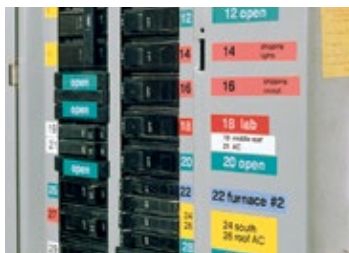




# Energy

## Industrial Labeling Solutions for:

- Fuel Lines
- Control Panels
- Conduits
- Safety Warnings
- Steam Lines
- Pulverizers/Feeders
- Valves
- Piping/Tubing
- Operating Procedures
- Lockout Procedures
- Lean/5S Visual Workplace
- Training Visual Aids
- Safety (OSHA/ANSI)

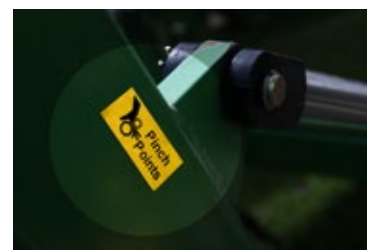




# Engineering

## Industrial Labeling Solutions for:

- Project Scheduling
- PERT Charts
- Gantt Charts
- Presentation Charts
- Immediate Drawings
- Training Flip Charts
- Schematics
- Prototype ID







# Healthcare

## Industrial Labeling Solutions for:

- Instruments
- Asset Tracking
- Specimen Labeling
- Instruction Labels
- Test Tubes
- Shelf Labels
- Directional Information
- Supplies/Chemicals
- Clean-Up Procedures
- Station Assignments
- Presentation Visuals
- Promotional Posters
- Material Management Bar Codes
- Medical Records
- Library Tags
- Apparatus Labels
- Name Tags
- Pharmaceutical Supplies
- Medical/Hazardous Waste
- Wayfinding/Directional Signage
- In/Out Status Boards
- Emergency Signage
- Message Boards
- First Aid Information
- COVID-19 Related Signage



# Labs

## Industrial Labeling Solutions for:

- Instruments
- Asset Tracking
- Specimen Labeling
- Instruction Labels
- Test Tubes
- Shelf Labels
- Directional Information
- Supplies/Chemicals
- Clean-Up Procedures
- Station Assignments
- Presentation Visuals
- Promotional Posters
- Material Management Bar Codes
- Medical Records
- Library Tags
- Apparatus Labels
- Name Tags
- Pharmaceutical Supplies
- Medical/Hazardous Waste
- Wayfinding/Directional Signage
- In/Out Status Boards
- Emergency Signage
- Message Boards
- First Aid Information
- COVID-19 Related Signage





# Maintenance

## Industrial Labeling Solutions for:

- Chemical Storage
- Cleaning Solvents
- Tool/Part Storage/ID
- Asset Management
- Repair Tags
- Service Procedures
- Schematics
- Tooling Information
- Supply Tags
- Test Procedures
- Precaution Signs
- Inspection Procedures
- Quality Control Regulations
- Assembly Instructions
- Meters
- Instruments
- Supply Cabinets & Bins
- Cleaning Instructions
- Job Scheduling
- Equipment ID
- Safety (OSHA/ANSI)
- Lean/5S Visual Workplace
- Calibration Labels
- Secondary Container ID





# Manufacturing

## Industrial Labeling Solutions for:

- Pipe Markers
- Machine Controls
- Production Tracking
- Equipment Labels
- Operating Instructions
- Quality Control Tags
- Assembly Line Classification
- Process Control Instructions
- Tooling Information
- Tool/Part Cribs
- Raw Materials
- Inspection Certificates
- Assembly Instructions
- Gear Labels
- Gauge ID
- Hoist Operating Instructions
- Cable Flagging
- Job Tracking
- Operating Guidelines
- Production Charts
- Scrap Bins
- Parts-in-Progress Tags
- Time Card Slots
- Production Control Boards
- Capacity Planning Boards
- Locker Labels
- Hard Hats
- PPE/Safety Clothing
- Lean/5S Visual Workplace
- Safety (OSHA/ANSI)
- Calibration Labels
- Secondary Container ID
- COVID-19 Related Signage





# Office

## Industrial Labeling Solutions for:

- COVID-19 Safety Notices
- Phone Systems
- Media Libraries
- IT Backup Tapes
- Name Plates/Badges
- Bulletin Boards
- Product Displays
- Stacking Trays
- Maps
- Blueprints
- Mailroom
- Filing Systems
- Common Areas/Breakrooms
- Tool/Equipment ID





# Safety/Quality

## Industrial Labeling Solutions for:

- COVID-19 Safety Notices
- Directional/Wayfinding Signs
- SPCISQC
- QFD
- Advanced Quality Process
- Employee Communication
- Quality Performance Standards
- Annual Planning Session
- Training Displays
- Clean-Up Procedures
- Performance Tracking
- Employee Training
- Meeting Announcements
- Quality Messages
- Charting Line Production
- Flowchart Processes
- Process Awareness Posters
- Assembly Line Banners
- Department ID
- Collision Area Signs
- Inspection Procedures
- Instrument Labeling
- Lean/5S Visual Workplace
- Training Visual Aids
- Safety Signs (OSHA/ANSI)
- Warning Labels
- PPE locations





# Utilities

## Industrial Labeling Solutions for:

- Equipment Labels
- Vehicle ID
- Transformers
- Pole Labels
- Switches
- Cable Marking
- Mail Bins
- Quality Charts
- Tool Cribs
- Part Bins
- Rack Shelf Labels
- Wire Markings
- Color Coding
- Gas Meters
- Electrical Meters
- Control Panels
- Regulators
- Junction Boxes
- Jacks
- Fuses/Circuit Breakers
- Component ID
- Emergency Procedures
- Motor Control Centers
- Solar Panels
- Electrical Panels
- Instrumentation Panels
- Safety Signs (OSHA/ANSI)



# Warehouse/Inventory Management

## Industrial Labeling Solutions for:

- Vertical/Horizontal Racks & Shelves
- Asset ID/Management
- Parts Bins
- Modular Drawer Bins
- Drawer Pulls
- Cabinets & Carts
- Containers
- Lot Numbers
- Aisle Markers
- Storage Requirements
- Handling Procedures
- Pallet Labels
- Equipment Labels
- Drawer Dividers
- Flow Racks
- Color-Coded Control Systems
- Bar Codes
- Shipping Labels
- Directional/Wayfinding Signs
- Loading Dock
- Office Hours
- File Cabinets
- Packing Slip Lots
- Floor Labeling
- Lean/5S Visual Workplace



AVAILABLE THROUGH

**GRAINGER**<sup>®</sup>

FOR THE ONES WHO GET IT DONE

GRAINGER.COM<sup>®</sup> | 1.800.GRAINGER



## LABEL YOUR ENTIRE FACILITY

Industry-Leading Savings  
Industry-Leading Warranty

FOR CUSTOMER INTERNAL USE ONLY

SD0221A1

**EPSON**<sup>®</sup>  
EXCEED YOUR VISION