

<b>Universe</b>	Professional
<b>Type</b>	Verticality
<b>Category</b>	Connectors
<b>Subcategory</b>	Aluminium carabiners



## WILLIAM

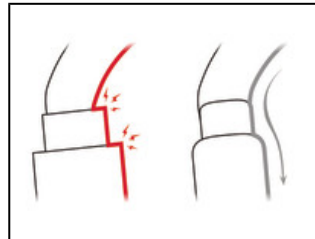
The WILLIAM asymmetrical large capacity aluminum carabiner has a pear shape that is practical for easily connecting multiple items. Its fluid interior design and Keylock system facilitate manipulations. The WILLIAM carabiner is available in three locking systems: SCREW-LOCK manual system or TRIACT-LOCK and BALL-LOCK automatic systems.



The WILLIAM has an asymmetric pear shape, with a large capacity for attaching multiple elements, and a large gate opening to facilitate their installation.



To facilitate equipment checks, SCREW-LOCK manual locking carabiners have a red band that is visible only when the carabiner is not locked.



Fluid interior design of WILLIAM carabiners limits the risk of having a catch point and facilitates rotation of the carabiner.



The WILLIAM has an H-profile that ensures an optimal strength/weight ratio and protects the markings from abrasion.

---

**Short Description** Asymmetrical large capacity aluminum carabiner

---

**Selling Points**

- Pear shape offers a large capacity and wide opening:
  - facilitates connection of multiple items
  - allows a Munter hitch to be easily created in case of retreat
- Facilitates manipulations:
  - fluid interior design limits the risk of having a catch point and facilitates rotation of the carabiner
  - Keylock system to avoid any involuntary snagging of the carabiner
- H profile:
  - ensures an improved strength-to-weight ratio
  - protects markings from abrasion
- Available in three different locking systems:
  - SCREW-LOCK: the manual screw-lock with red band provides a visual warning when the carabiner is unlocked
  - TRIACT-LOCK: automatic locking with triple-action gate opening
  - BALL-LOCK: automatic locking with triple-action gate opening, with lock indicator
- Also available in black (SCREW-LOCK and TRIACT-LOCK)

---

**Specification**

- Material(s): aluminum
  - Certification(s): CE EN 362, EAC, NFPA 1983 Technical Use
-

**Specifications by reference**

Reference(s)	M36A SL	M36A TL	M36A BL	M36A SLN
				
Weight	85 g	90 g	90 g	85 g
Locking system	SCREW-LOCK	TRIACT-LOCK	BALL-LOCK	SCREW-LOCK
Color(s)	gray	gray	gray	black
Major axis strength	27 kN	27 kN	27 kN	27 kN
Minor axis strength	8 kN	8 kN	8 kN	8 kN
Open gate strength	8 kN	8 kN	8 kN	8 kN
Gate opening	28 mm	27 mm	27 mm	28 mm
Made in	FR	FR	FR	FR
Guarantee	3 years	3 years	3 years	3 years
Packing	1	1	1	1
Case quantity	20	20	20	20
EAN	3342540102361	3342540102354	3342540102316	3342540102347

Reference(s)	M36A TLN
	
Weight	90 g
Locking system	TRIACT-LOCK
Color(s)	black
Major axis strength	27 kN
Minor axis strength	8 kN
Open gate strength	8 kN
Gate opening	27 mm
Made in	FR
Guarantee	3 years
Packing	1
Case quantity	20
EAN	3342540102330

**Related product(s)**  
 PRO TRAXION  
 JAG TRAXION  
 GEMINI  
 PAW